



Wireless Charging Pad

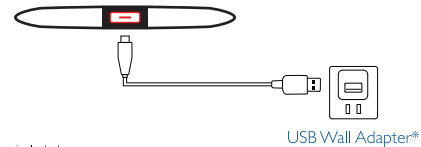
User Guide & Warranty

A-WPAD

Powering The Pad

Plug the included cable into the Type-C port on the back of the Pad. Plug the other end of this cable into a USB power source such as a USB wall adapter. The Pad can also be charged by utilizing other standard USB Type-C to USB Type-A cables.

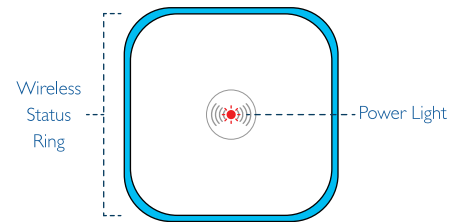
When properly connected and powered on, the power light on the Pad will blink Red then go solid Red.



* Not included.

Status Lights

The power light is located on the top of the Pad and the wireless status light is located around the ring of the Pad. See the "Powering The Pad" & "Charging Your Device" sections of the manual for more details.

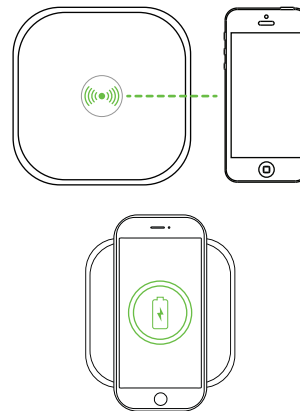


Charging Your Device

Before charging, check your devices specifications to ensure it is wireless charging compatible.

To start the charging process, simply place your device on the Pad. Depending on the device, you may need to move that device off-center to make contact with the wireless charging receiver. The status light ring will pulse Blue once your device has started wirelessly charging. That light will turn off after approximately 15 seconds.

Note: If your device is inside a case, that case can not be more than 6mm thick or the wireless signal will not pass through. Any magnets or heavy metals on the rear of the device case will also interfere with wireless charging.



Specifications

Wireless Power	10 W
Input	5 V / 2 Amp 9 V / 2 Amp
Output	5 V / 1 Amp 9 V / 1.1 Amp
Charging Distance	6 mm
Efficiency	70%
Frequency	110 - 220KHz
Operating frequency	114.26 KHz -151.11KHz

Notices & Warnings

1. Only place wireless charging compatible devices on the Pad when powered on.
2. It is normal for the Pad to be warm during the charging process.
3. Keep the Pad clean and dry without using any chemical cleaners.
4. Do not let children handle the Pad.
5. Do not puncture, disassemble, crush or dampen the Pad.
6. Do not leave the Pad in a high temperature environment for extended periods of time.
7. Do not input non-compliant voltage into the Pad.
8. Do not place magnets, heavy metals or non-wireless charging compatible batteries on the Pad when powered on.
9. Follow local and state regulations for recycling this device; and other laws governing its use.

Warranty

Acesori is pleased to cover your Acesori Wireless Pad for a period of one year from the date of purchase. Please contact us within that year for any technical assistance with your Acesori item.

Email: support@acesori.com Website: www.acesori.com

See website for full warranty conditions

FCC Statement

Changes or modifications not expressly approved by the party responsible for compliance could void the user's authority to operate the equipment.

This equipment has been tested and found to comply with the limits for a Class B digital device, pursuant to Part 15 of the FCC Rules. These limits are designed to provide reasonable protection against harmful interference in a residential installation.

This equipment generates uses and can radiate radio frequency energy and, if not installed and used in accordance with the instructions, may cause harmful interference to radio communications. However, there is no guarantee that interference will not occur in a particular installation. If this equipment does cause harmful interference to radio or television reception, which can be determined by turning the equipment off and on, the user is encouraged to try to correct the interference by one or more of the following measures:

- Reorient or relocate the receiving antenna.
- Increase the separation between the equipment and receiver.
- Connect the equipment into an outlet on a circuit different from that to which the receiver is connected.
- Consult the dealer or an experienced radio/TV technician for help

This device complies with part 15 of the FCC rules. Operation is subject to the following two conditions (1) this device may not cause harmful interference, and (2) this device must accept any interference received, including interference that may cause undesired operation.