

# TEST REPORT

**FCC ID: 2AUOJA-WPAD**

**Product: Wireless Charging Pad**

**Model No.: A-WPAD**

**Additional Model No.: A-WPAD-01, A-WPAD-02, A-WPAD-03, A-WPAD-04,  
A-WPAD-05, A-WPAD-06**

**Trade Mark:**



**Report No.: TCT200424E010**

**Issued Date: Apr. 30, 2020**

Issued for:

**SHENZHEN CHIFROG TECHNOLOGY CO., LTD**

**3/F, BLD B19, No.1 Industrial Zone of Fenghuang, Fengye 5th Road, Fuyong,  
Bao'an, Shenzhen, Guangdong, China**

Issued By:

**Shenzhen Tongce Testing Lab.**

**1B/F., Building 1, Yibaolai Industrial Park, Qiaotou, Fuyong, Baoan District,  
Shenzhen, Guangdong, China**

**TEL: +86-755-27673339**

**FAX: +86-755-27673332**

**Note:** This report shall not be reproduced except in full, without the written approval of Shenzhen Tongce Testing Lab.

This document may be altered or revised by Shenzhen Tongce Testing Lab. personnel only, and shall be noted in the revision section of the document. The test results in the report only apply to the tested sample.

## TABLE OF CONTENTS

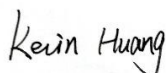
1. Test Certification .....	3
2. Test Result Summary .....	4
3. EUT Description.....	5
4. General Information.....	6
4.1. Test environment and mode.....	6
4.2. Description of Support Units.....	6
5. Facilities and Accreditations .....	7
5.1. Facilities .....	7
5.2. Location .....	7
5.3. Measurement Uncertainty.....	7
6. Test Results and Measurement Data .....	8
6.1. Antenna requirement .....	8
6.2. Conducted Emission.....	9
6.3. Radiated Spurious Emission Measurement.....	13
Appendix A: Photographs of Test Setup	
Appendix B: Photographs of EUT	

## 1. Test Certification

<b>Product:</b>	Wireless Charging Pad
<b>Model No.:</b>	A-WPAD
<b>Additional Model No.:</b>	A-WPAD-01, A-WPAD-02, A-WPAD-03, A-WPAD-04, A-WPAD-05, A-WPAD-06
<b>Trade Mark:</b>	
<b>Applicant:</b>	SHENZHEN CHIFROG TECHNOLOGY CO., LTD
<b>Address:</b>	3/F, BLD B19, No.1 Industrial Zone of Fenghuang, Fengye 5th Road, Fuyong, Bao'an, Shenzhen, Guangdong, China
<b>Manufacturer:</b>	SHENZHEN CHIFROG TECHNOLOGY CO., LTD
<b>Address:</b>	3/F, BLD B19, No.1 Industrial Zone of Fenghuang, Fengye 5th Road, Fuyong, Bao'an, Shenzhen, Guangdong, China
<b>Date of Test:</b>	Apr. 26, 2020 – Apr. 29, 2020
<b>Applicable Standards:</b>	FCC CFR Title 47 Part 15 Subpart C

The above equipment has been tested by Shenzhen Tongce Testing Lab. and found compliance with the requirements set forth in the technical standards mentioned above. The results of testing in this report apply only to the product/system, which was tested. Other similar equipment will not necessarily produce the same results due to production tolerance and measurement uncertainties.

Tested By:



Kevin Huang

Date:

Apr. 29, 2020

Reviewed By:



Beryl Zhao

Date:

Apr. 30, 2020

Approved By:



Tomsin

Date:

Apr. 30, 2020


## 2. Test Result Summary

Requirement	CFR 47 Section	Result
Antenna requirement	§15.203	PASS
AC Power Line Conducted Emission	§15.207	PASS
Spurious Emission	§15.209(a)(f)	PASS

**Note:**

1. PASS: Test item meets the requirement.
2. Fail: Test item does not meet the requirement.
3. N/A: Test case does not apply to the test object.
4. The test result judgment is decided by the limit of test standard.

### 3. EUT Description

<b>Product:</b>	Wireless Charging Pad
<b>Model No.:</b>	A-WPAD
<b>Additional Model No.:</b>	A-WPAD-01, A-WPAD-02, A-WPAD-03, A-WPAD-04, A-WPAD-05, A-WPAD-06
<b>Trade Mark:</b>	
<b>Operation Frequency:</b>	114.26 KHz -151.11KHz
<b>Modulation Technology:</b>	Load modulation
<b>Antenna Type:</b>	Inductive loop coil Antenna
<b>Power Supply:</b>	DC 9V
<b>Remark:</b>	All models above are identical in interior structure, electrical circuits and components, just color is different for the marketing requirement.

## 4. General Information

### 4.1. Test environment and mode

Operating Environment:		
Condition	Conducted Emission	Radiated Emission
Temperature:	25.0 °C	25.0 °C
Humidity:	55 % RH	55 % RH
Atmospheric Pressure:	1010 mbar	1010 mbar
Test Mode:		
Engineering mode:	Keep the EUT in continuous transmitting by select channel and modulations(The value of duty cycle is 98.46%) with Fully-charged battery.	
The sample was placed 0.8m & 1.5m for the measurement below & above 1GHz above the ground plane of 3m chamber. Measurements in both horizontal and vertical polarities were performed. During the test, each emission was maximized by: having the EUT continuously working, investigated all operating modes, rotated about all 3 axis (X, Y & Z) and considered typical configuration to obtain worst position, manipulating interconnecting cables, rotating the turntable, varying antenna height from 1m to 4m in both horizontal and vertical polarizations. The emissions worst-case( Z axis) are shown in Test Results of the following pages.		

### 4.2. Description of Support Units

The EUT has been tested as an independent unit together with other necessary accessories or support units. The following support units or accessories were used to form a representative test configuration during the tests.

Equipment	Model No.	Serial No.	FCC ID	Trade Name
Mobile Phone	SM-G9350	R28HA2ER3GT	/	SAMSUNG
Adapter	JD-050200	2012010907576735	/	/

**Note:**

1. All the equipment/cables were placed in the worst-case configuration to maximize the emission during the test.
2. Grounding was established in accordance with the manufacturer's requirements and conditions for the intended use.
3. For conducted measurements (Output Power, 6dB Emission Bandwidth, Power Spectral Density, Spurious Emissions), the antenna of EUT is connected to the test equipment via temporary antenna connector, the antenna connector is soldered on the antenna port of EUT, and the temporary antenna connector is listed in the Test Instruments.

## 5. Facilities and Accreditations

### 5.1. Facilities

The test facility is recognized, certified, or accredited by the following organizations:

- FCC - Registration No.: 645098

Shenzhen Tongce Testing Lab.

The 3m Semi-anechoic chamber has been registered and fully described in a report with the (FCC) Federal Communications Commission. The acceptance letter from the FCC is maintained in our files.

- IC - Registration No.: 10668A-1

The 3m Semi-anechoic chamber of Shenzhen TCT Testing Technology Co., Ltd. has been registered by Certification and Engineering Bureau of Industry Canada for radio equipment testing

### 5.2. Location

Shenzhen Tongce Testing Lab.

Address: 1B/F., Building 1, Yibaolai Industrial Park, Qiaotou, Fuyong, Baoan District, Shenzhen, Guangdong, China

TEL: +86-755-27673339

### 5.3. Measurement Uncertainty

The reported uncertainty of measurement  $y \pm U$ , where expended uncertainty  $U$  is based on a standard uncertainty multiplied by a coverage factor of  $k=2$ , providing a level of confidence of approximately 95 %.

No.	Item	MU
1	Conducted Emission	$\pm 2.56\text{dB}$
2	RF power, conducted	$\pm 0.12\text{dB}$
3	Spurious emissions, conducted	$\pm 0.11\text{dB}$
4	All emissions, radiated(<1G)	$\pm 3.92\text{dB}$
5	All emissions, radiated(>1G)	$\pm 4.28\text{dB}$
6	Temperature	$\pm 0.1^{\circ}\text{C}$
7	Humidity	$\pm 1.0\%$



## 6. Test Results and Measurement Data

### 6.1. Antenna requirement

**Standard requirement:**

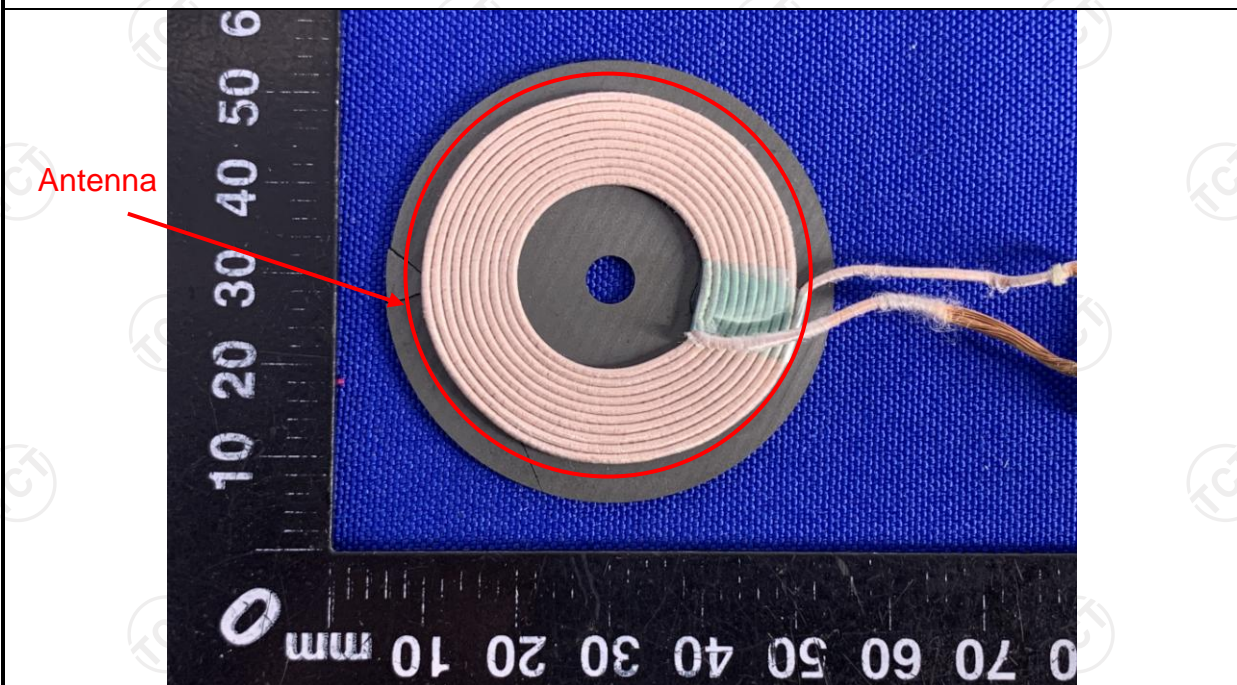
FCC Part15 C Section 15.203

**15.203 requirement:**

An intentional radiator shall be designed to ensure that no antenna other than that furnished by the responsible party shall be used with the device. The use of a permanently attached antenna or of an antenna that uses a unique coupling to the intentional radiator, the manufacturer may design the unit so that a broken antenna can be replaced by the user, but the use of a standard antenna jack or electrical connector is prohibited.

**E.U.T Antenna:**

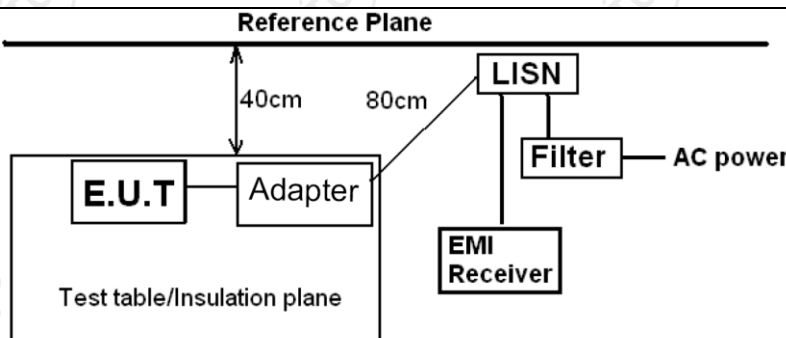
The antenna is inductive loop coil antenna which permanently attached.





## 6.2. Conducted Emission

### 6.2.1. Test Specification

Test Requirement:	FCC Part15 C Section 15.207														
Test Method:	ANSI C63.10:2013														
Frequency Range:	150 kHz to 30 MHz														
Receiver setup:	RBW=9 kHz, VBW=30 kHz, Sweep time=auto														
Limits:	<table><tr><th rowspan="2">Frequency range (MHz)</th><th colspan="2">Limit (dBuV)</th></tr><tr><th>Quasi-peak</th><th>Average</th></tr><tr><td>0.15-0.5</td><td>66 to 56*</td><td>56 to 46*</td></tr><tr><td>0.5-5</td><td>56</td><td>46</td></tr><tr><td>5-30</td><td>60</td><td>50</td></tr></table>	Frequency range (MHz)	Limit (dBuV)		Quasi-peak	Average	0.15-0.5	66 to 56*	56 to 46*	0.5-5	56	46	5-30	60	50
Frequency range (MHz)	Limit (dBuV)														
	Quasi-peak	Average													
0.15-0.5	66 to 56*	56 to 46*													
0.5-5	56	46													
5-30	60	50													
Test Setup:	<div><p>Reference Plane</p><p>Remark: E.U.T: Equipment Under Test LISN: Line Impedance Stabilization Network Test table height=0.8m</p></div>														
Test Mode:	Charging + Transmitting Mode														
Test Procedure:	<div><div>1. The E.U.T is connected to an adapter through a line impedance stabilization network (L.I.S.N.). This provides a 50ohm/50uH coupling impedance for the measuring equipment.</div><div>2. The peripheral devices are also connected to the main power through a LISN that provides a 50ohm/50uH coupling impedance with 50ohm termination. (Please refer to the block diagram of the test setup and photographs).</div><div>3. Both sides of A.C. line are checked for maximum conducted interference. In order to find the maximum emission, the relative positions of equipment and all of the interface cables must be changed according to ANSI C63.10: 2013 on conducted measurement.</div></div>														
Test Result:	PASS														

## 6.2.2. Test Instruments

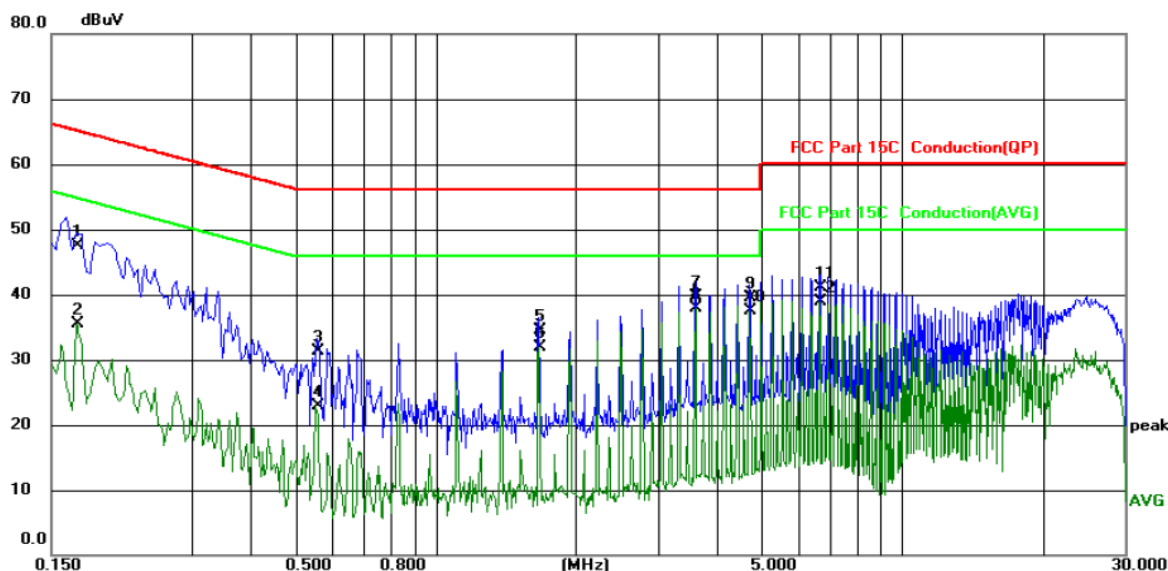
Conducted Emission Shielding Room Test Site (843)				
Equipment	Manufacturer	Model	Serial Number	Calibration Due
Test Receiver	R&S	ESPI	101402	Jul. 29, 2020
LISN	Schwarzbeck	NSLK 8126	8126453	Sep. 11, 2020
Coax cable (9KHz-30MHz)	TCT	CE-05	N/A	Sep. 08, 2020
EMI Test Software	Shurple Technology	EZ-EMC	N/A	N/A

**Note:** The calibration interval of the above test instruments is 12 months and the calibrations are traceable to international system unit (SI).

## 6.2.3. Test data

Please refer to following diagram for individual

### Conducted Emission on Line Terminal of the power line (150 kHz to 30MHz)



Site: Phase: **L1** Temperature: 25 (C)  
Limit: FCC Part 15C Conduction(QP) Power: Humidity: 55 %RH

No.	Mk.	Freq. MHz	Reading Level dBuV	Correct Factor dB	Measure- ment dBuV	Limit dBuV	Over dB	Detector	Comment
1		0.1700	37.21	10.22	47.43	64.96	-17.53	QP	
2		0.1700	25.28	10.22	35.50	54.96	-19.46	AVG	
3		0.5580	20.99	10.23	31.22	56.00	-24.78	QP	
4		0.5580	12.62	10.23	22.85	46.00	-23.15	AVG	
5		1.6660	24.00	10.42	34.42	56.00	-21.58	QP	
6		1.6660	21.54	10.42	31.96	46.00	-14.04	AVG	
7		3.6060	29.23	10.47	39.70	56.00	-16.30	QP	
8	*	3.6060	27.36	10.47	37.83	46.00	-8.17	AVG	
9		4.7180	28.93	10.48	39.41	56.00	-16.59	QP	
10		4.7180	27.10	10.48	37.58	46.00	-8.42	AVG	
11		6.6660	30.52	10.51	41.03	60.00	-18.97	QP	
12		6.6660	28.37	10.51	38.88	50.00	-11.12	AVG	

#### Note:

Freq. = Emission frequency in MHz

Reading level (dBuV) = Receiver reading

Corr. Factor (dB) = LISN factor + Cable loss

Measurement (dBuV) = Reading level (dBuV) + Corr. Factor (dB)

Limit (dBuV) = Limit stated in standard

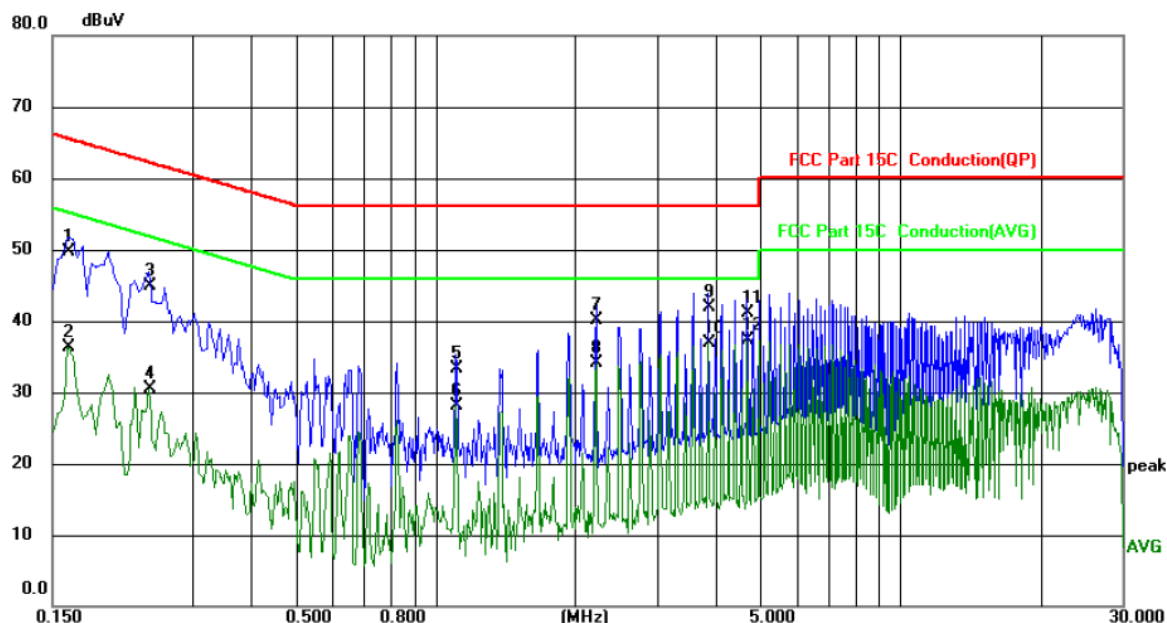
Margin (dB) = Measurement (dBuV) – Limits (dBuV)

Q.P. =Quasi-Peak

AVG =average

\* is meaning the worst frequency has been tested in the frequency range 150 kHz to 30MHz

## Conducted Emission on Neutral Terminal of the power line (150 kHz to 30MHz)



Site: Phase: **N** Temperature: 25 (C)  
 Limit: FCC Part 15C Conduction(QP) Power: Humidity: 55 %RH

No.	Mk.	Freq. MHz	Reading Level dBuV	Correct Factor dB	Measure- ment dBuV	Limit dBuV	Over dB	Detector	Comment
1		0.1620	39.48	10.22	49.70	65.36	-15.66	QP	
2		0.1620	26.14	10.22	36.36	55.36	-19.00	AVG	
3		0.2420	34.66	10.23	44.89	62.03	-17.14	QP	
4		0.2420	20.20	10.23	30.43	52.03	-21.60	AVG	
5		1.1100	22.89	10.37	33.26	56.00	-22.74	QP	
6		1.1100	17.76	10.37	28.13	46.00	-17.87	AVG	
7		2.2180	29.74	10.45	40.19	56.00	-15.81	QP	
8		2.2180	23.74	10.45	34.19	46.00	-11.81	AVG	
9		3.8620	31.45	10.47	41.92	56.00	-14.08	QP	
10		3.8620	26.45	10.47	36.92	46.00	-9.08	AVG	
11		4.6900	30.68	10.48	41.16	56.00	-14.84	QP	
12	*	4.6900	26.77	10.48	37.25	46.00	-8.75	AVG	

### Note1:

Freq. = Emission frequency in MHz

Reading level (dBuV) = Receiver reading

Corr. Factor (dB) = LISN factor + Cable loss

Measurement (dBuV) = Reading level (dBuV) + Corr. Factor (dB)

Limit (dBuV) = Limit stated in standard

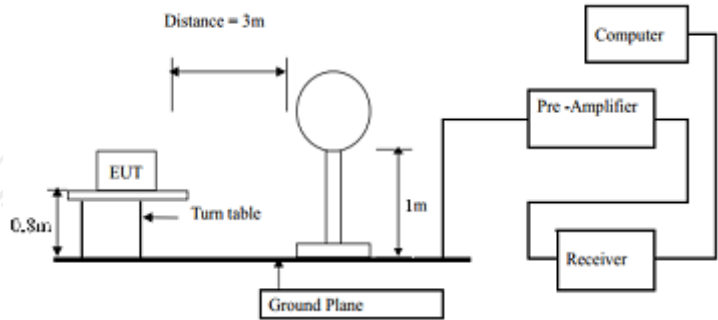
Margin (dB) = Measurement (dBuV) – Limits (dBuV)

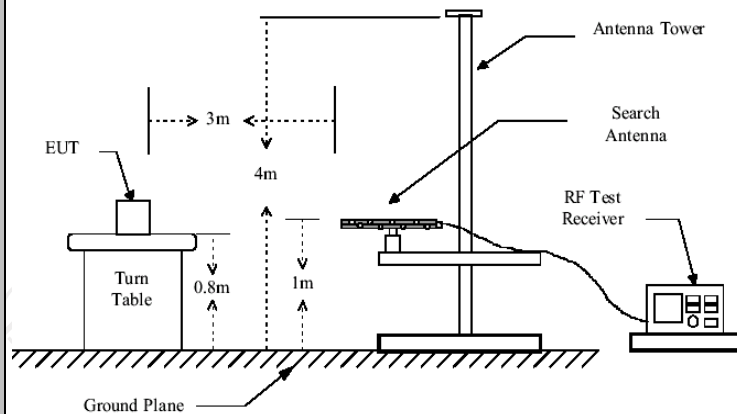
Q.P. =Quasi-Peak AVG =average

\* is meaning the worst frequency has been tested in the frequency range 150 kHz to 30MHz.

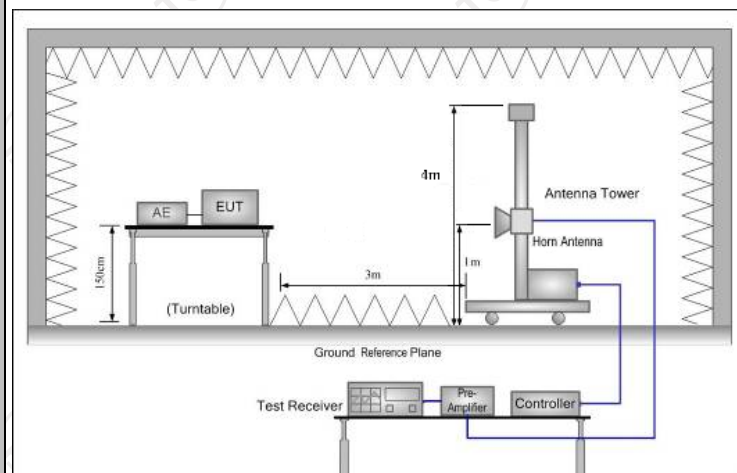
## 6.3. Radiated Spurious Emission Measurement

### 6.3.1. Test Specification

<b>Test Requirement:</b>	FCC Part15 C Section 15.209			
<b>Test Method:</b>	ANSI C63.10: 2013			
<b>Frequency Range:</b>	9 kHz to 25 GHz			
<b>Measurement Distance:</b>	3 m			
<b>Antenna Polarization:</b>	Horizontal & Vertical			
<b>Operation mode:</b>	Refer to item 4.1			
<b>Receiver Setup:</b>	Frequency	Detector	RBW	VBW
	9kHz- 150kHz	Quasi-peak	200Hz	1kHz
	150kHz- 30MHz	Quasi-peak	9kHz	30kHz
	30MHz-1GHz	Quasi-peak	120KHz	300KHz
	Above 1GHz	Peak	1MHz	3MHz
<b>Limit:</b>				Remark
				Quasi-peak Value
				Quasi-peak Value
				Quasi-peak Value
				Peak Value
<b>Test setup:</b>	Frequency	Field Strength (microvolts/meter)	Measurement Distance (meters)	
	0.009-0.490	2400/F(KHz)	300	
	0.490-1.705	24000/F(KHz)	30	
	1.705-30	30	30	
	30-88	100	3	
<b>Test setup:</b>	88-216	150	3	
	216-960	200	3	
	Above 960	500	3	
	Frequency	Field Strength (microvolts/meter)	Measurement Distance (meters)	Detector
	Above 1GHz	500	3	Average
		5000	3	Peak
<b>Test setup:</b>	For radiated emissions below 30MHz			
				
	30MHz to 1GHz			



Above 1GHz



## Test Procedure:

- For the radiated emission test below 1GHz:  
The EUT was placed on a turntable with 0.8 meter above ground. The EUT was set 3 meters from the interference receiving antenna, which was mounted on the top of a variable height antenna tower. The EUT was arranged to its worst case and then tune the antenna tower (from 1 m to 4 m) and turntable (from 0 degree to 360 degrees) to find the maximum reading. A pre-amp and a high PASS filter are used for the test in order to get better signal level.
- For the radiated emission test above 1GHz:  
Place the measurement antenna on a turntable with 1.5 meter above ground, which is away from each area of the EUT determined to be a source of emissions at the specified measurement distance, while keeping the measurement antenna aimed at the source of emissions at each frequency of significant emissions, with polarization oriented for maximum response. The measurement antenna may have to be higher or lower than the EUT, depending on the radiation pattern of the emission and staying aimed at the emission source for receiving the maximum signal. The final

	<p>measurement antenna elevation shall be that which maximizes the emissions. The measurement antenna elevation for maximum emissions shall be restricted to a range of heights of from 1 m to 4 m above the ground or reference ground plane.</p> <p>2. Corrected Reading: Antenna Factor + Cable Loss + Read Level - Preamp Factor = Level</p> <p>3. For measurement below 1GHz, If the emission level of the EUT measured by the peak detector is 3 dB lower than the applicable limit, the peak emission level will be reported. Otherwise, the emission measurement will be repeated using the quasi-peak detector and reported.</p> <p>4. Use the following spectrum analyzer settings:</p> <p>(1) Span shall wide enough to fully capture the emission being measured;</p> <p>(2) Set RBW=120 kHz for <math>f &lt; 1</math> GHz; VBW <math>\geq</math> RBW; Sweep = auto; Detector function = peak; Trace = max hold;</p> <p>(3) Set RBW = 1 MHz, VBW= 3MHz for <math>f \geq 1</math> GHz for peak measurement.</p> <p>For average measurement: VBW = 10 Hz, when duty cycle is no less than 98 percent. VBW <math>\geq 1/T</math>, when duty cycle is less than 98 percent where T is the minimum transmission duration over which the transmitter is on and is transmitting at its maximum power control level for the tested mode of operation.</p>
<b>Test mode:</b>	Refer to section 4.1 for details
<b>Test results:</b>	PASS



### 6.3.2. Test Instruments

Radiated Emission Test Site (966)				
Name of Equipment	Manufacturer	Model	Serial Number	Calibration Due
Test Receiver	ROHDE&SCHW ARZ	ESIB7	100197	Jul. 29, 2020
Spectrum Analyzer	ROHDE&SCHW ARZ	FSQ40	200061	Sep. 11, 2020
Pre-amplifier	EM Electronics Corporation CO.,LTD	EM30265	07032613	Sep. 08, 2020
Pre-amplifier	HP	8447D	2727A05017	Sep. 08, 2020
Loop antenna	ZHINAN	ZN30900A	12024	Sep. 11, 2020
Broadband Antenna	Schwarzbeck	VULB9163	340	Sep. 06, 2020
Horn Antenna	Schwarzbeck	BBHA 9120D	631	Sep. 06, 2020
Horn Antenna	A-INFO	LB-180400-KF	J211020657	Sep. 06, 2020
Antenna Mast	Keleto	RE-AM	N/A	N/A
Coax cable (9KHz-40GHz)	TCT	RE-high-02	N/A	Sep. 08, 2020
Coax cable (9KHz-40GHz)	TCT	RE-high-04	N/A	Sep. 08, 2020
EMI Test Software	Shurple Technology	EZ-EMC	N/A	N/A

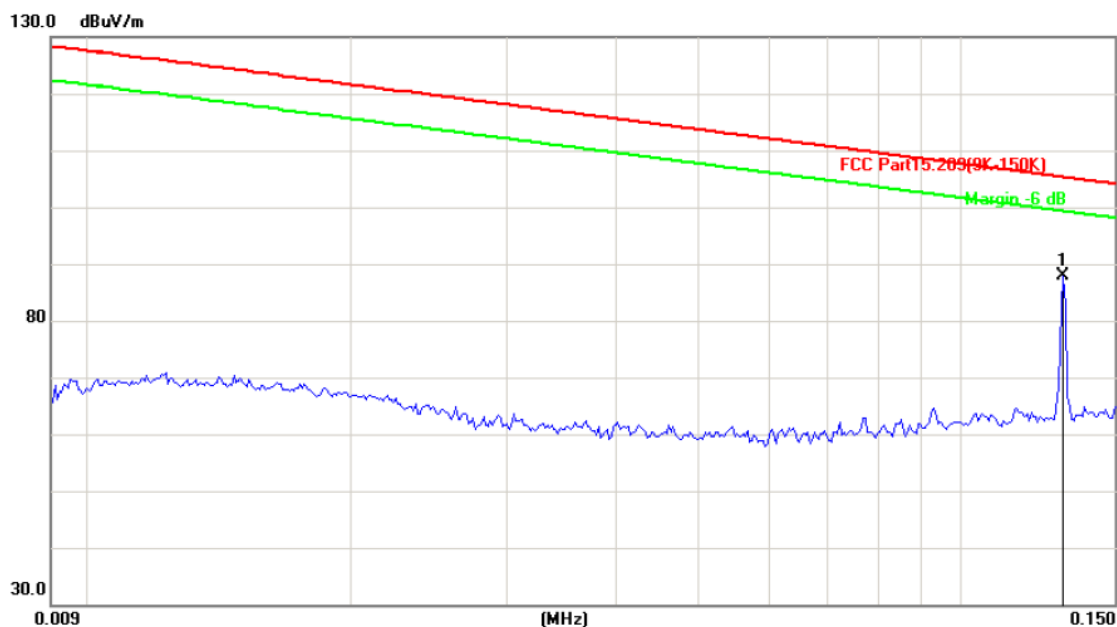
**Note:** The calibration interval of the above test instruments is 12 months and the calibrations are traceable to international system unit (SI).

## 6.3.3. Test Data

Please refer to following diagram for individual

9KHz-30MHz

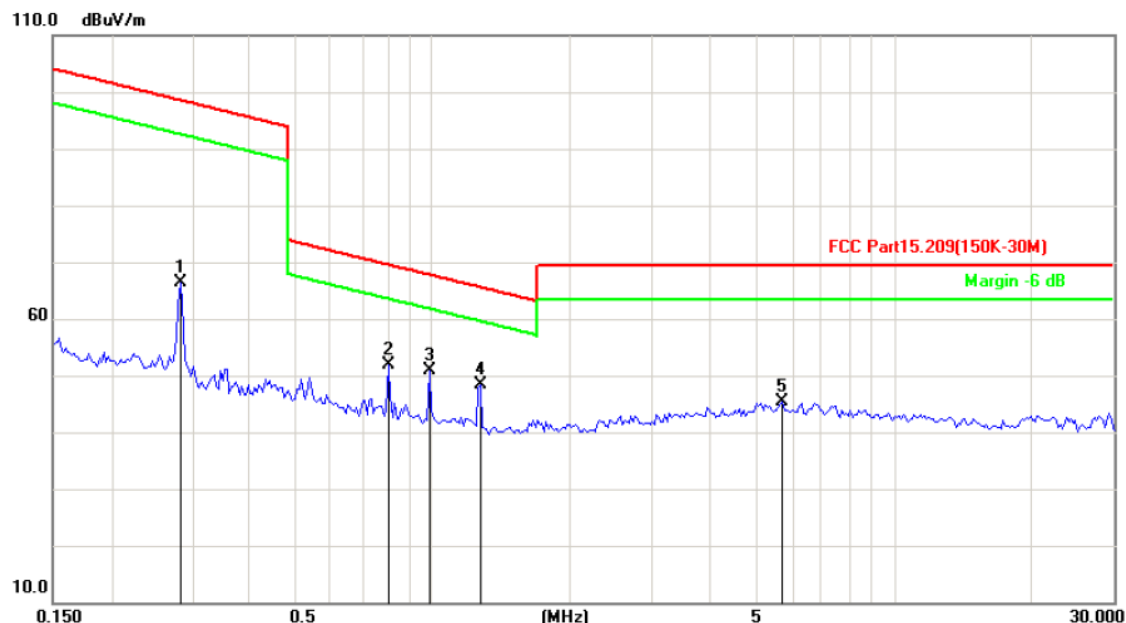
9KHz-150KHz:



Site: Polarization: **Horizontal** Temperature: 25  
 Limit: FCC Part15.209(9K-150K) Power: Humidity: 55 %

No.	Mk.	Freq.	Reading Level	Correct Factor	Measure-ment	Limit	Over	Detector
		MHz	dBuV	dB	dBuV/m	dB/m	dB	
1	*	0.1310	62.47	25.46	87.93	105.2	-17.35	peak

150KHz-30MHz:

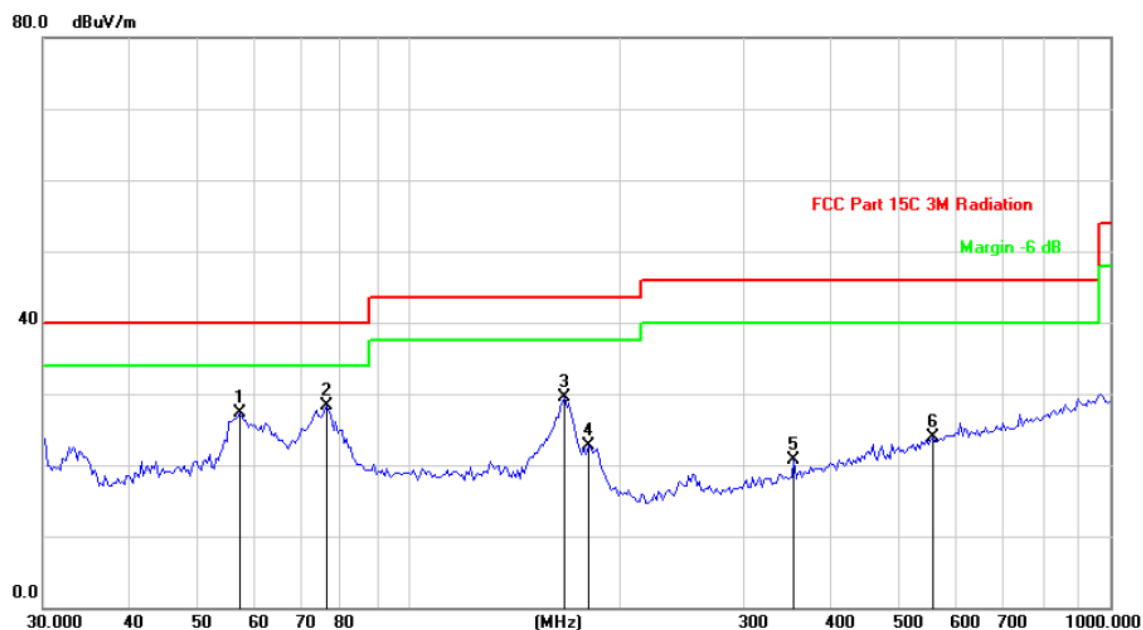


Site: Polarization: **Horizontal** Temperature: 25  
 Limit: FCC Part15.209(150K-30M) Power: Humidity: 55 %

No.	Mk.	Freq.	Reading Level	Correct Factor	Measurement	Limit	Over	Detector
		MHz	dBuV	dB	dBuV/m	dB/m	dB	
1		0.2836	40.44	25.83	66.27	98.56	-32.29	peak
2		0.8024	26.41	25.45	51.86	69.53	-17.67	peak
3	*	0.9824	25.38	25.44	50.82	67.78	-16.96	peak
4		1.2675	23.05	25.37	48.42	65.57	-17.15	peak
5		5.7248	20.08	25.21	45.29	69.50	-24.21	peak

## 30MHz-1GHz

Horizontal:



Site

Polarization: **Horizontal**

Temperature: 25

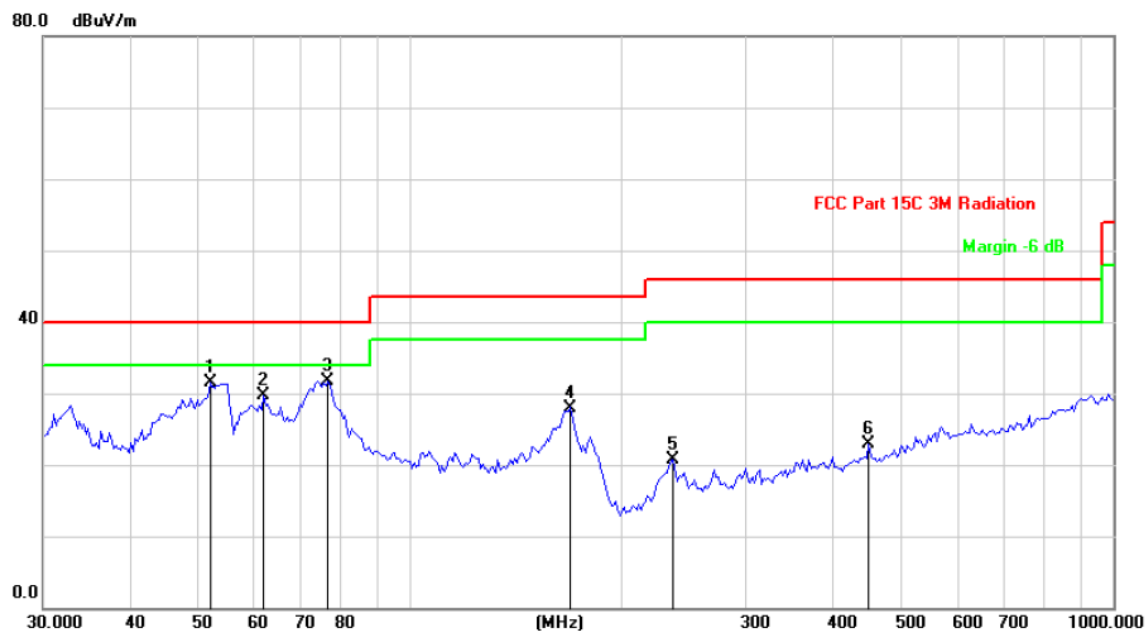
Limit: FCC Part 15C 3M Radiation

Power:

Humidity: 55 %

No.	Mk.	Freq. MHz	Reading Level dBuV	Correct Factor dB	Measure- ment dBuV/m	Limit dB/m	Over dB	Detector
1		57.2654	39.14	-11.83	27.31	40.00	-12.69	peak
2	*	76.3869	44.94	-16.66	28.28	40.00	-11.72	peak
3		166.6385	45.10	-15.66	29.44	43.50	-14.06	peak
4		180.0304	37.70	-14.98	22.72	43.50	-20.78	peak
5		353.4471	29.58	-8.95	20.63	46.00	-25.37	peak
6		558.0788	29.13	-5.22	23.91	46.00	-22.09	peak

Vertical:



Site

Polarization: **Vertical**

Temperature: 25

Limit: FCC Part 15C 3M Radiation

Power:

Humidity: 55 %

No.	Mk.	Freq. MHz	Reading Level dBuV	Correct Factor dB	Measure- ment dBuV/m	Limit dB/m	Over dB	Detector
1		51.8998	41.92	-10.49	31.43	40.00	-8.57	peak
2		61.8676	42.76	-13.15	29.61	40.00	-10.39	peak
3	*	76.3869	48.40	-16.66	31.74	40.00	-8.26	peak
4		168.9970	43.55	-15.55	28.00	43.50	-15.50	peak
5		236.7928	33.52	-12.74	20.78	46.00	-25.22	peak
6		448.8361	30.05	-7.24	22.81	46.00	-23.19	peak

**Note:**

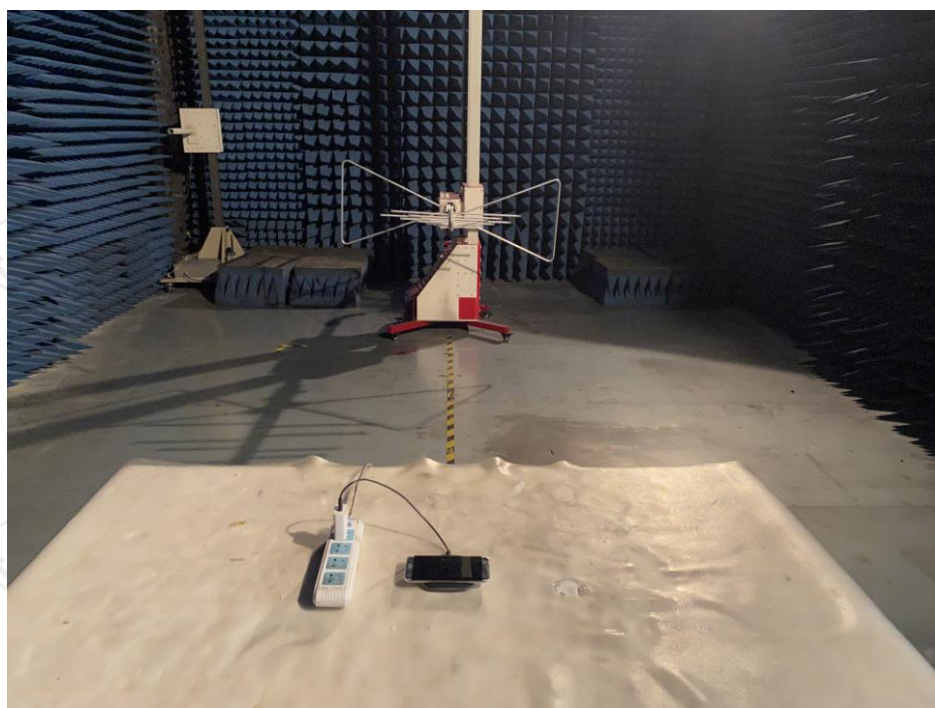
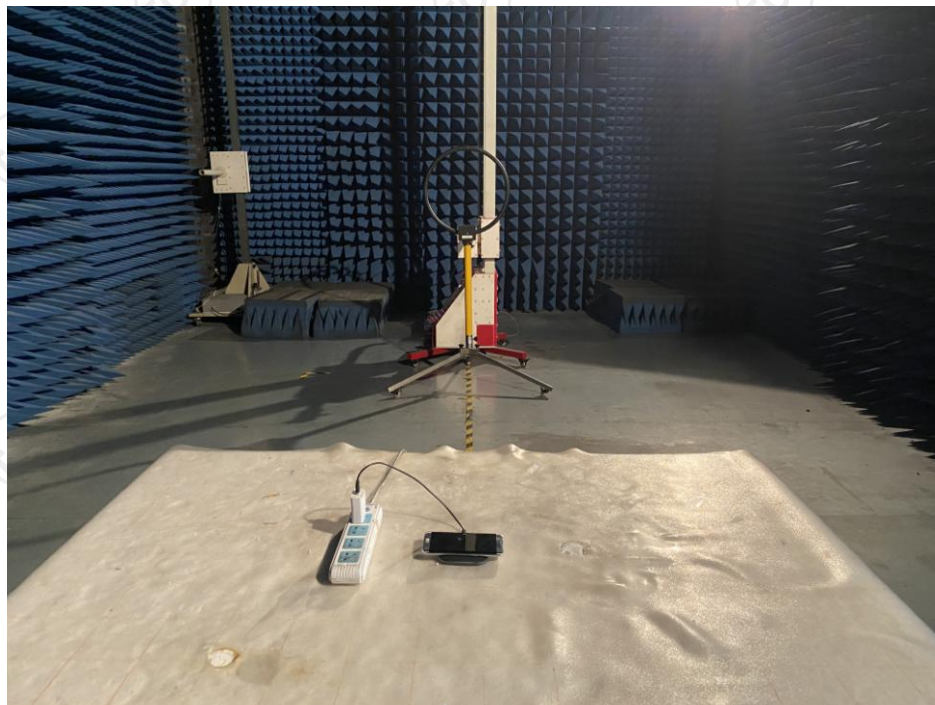
Emission Level=Peak Reading + Correction Factor; Correction Factor= Antenna Factor + Cable loss - Pre-amplifier

## Appendix A: Photographs of Test Setup

Product: Wireless Charging Pad

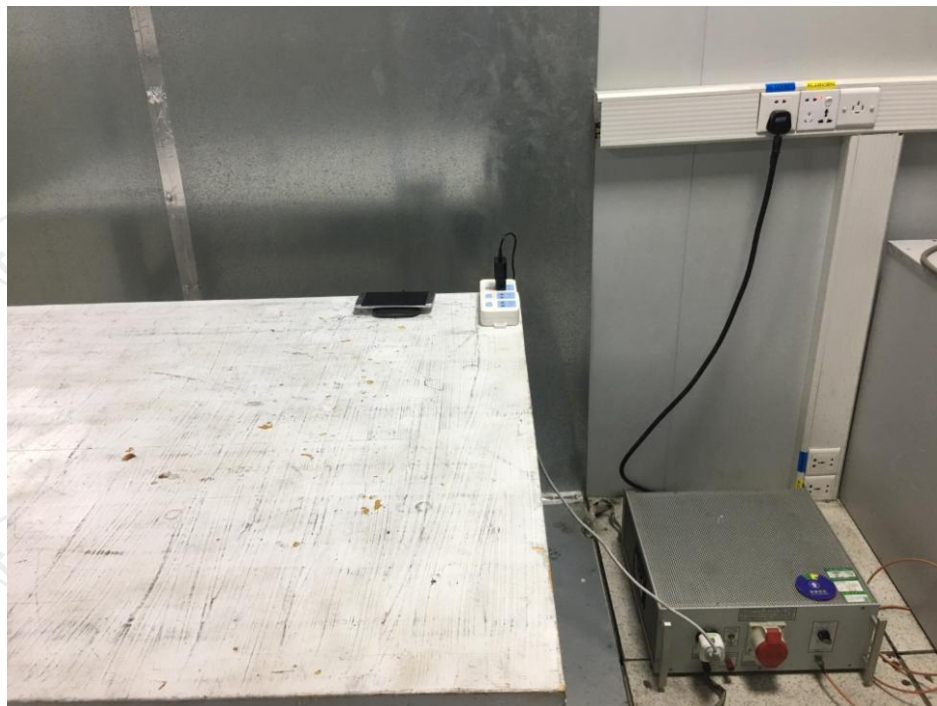
Model: A-WPAD

Radiated Emission





### Conducted Emission

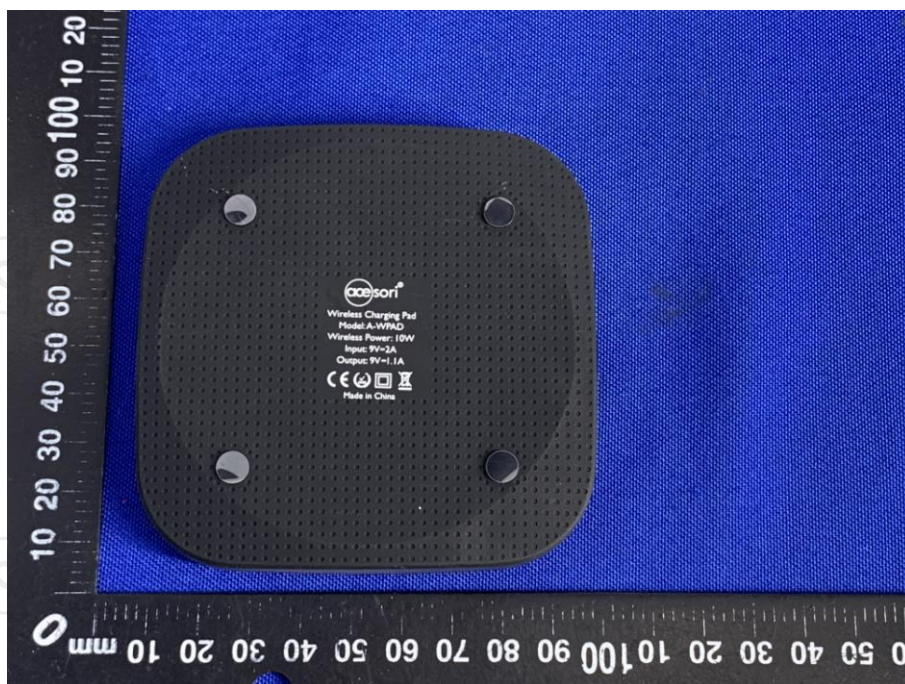




**Appendix B: Photographs of EUT**  
**Product: Wireless Charging Pad**  
**Model: A-WPAD**  
**External Photos**





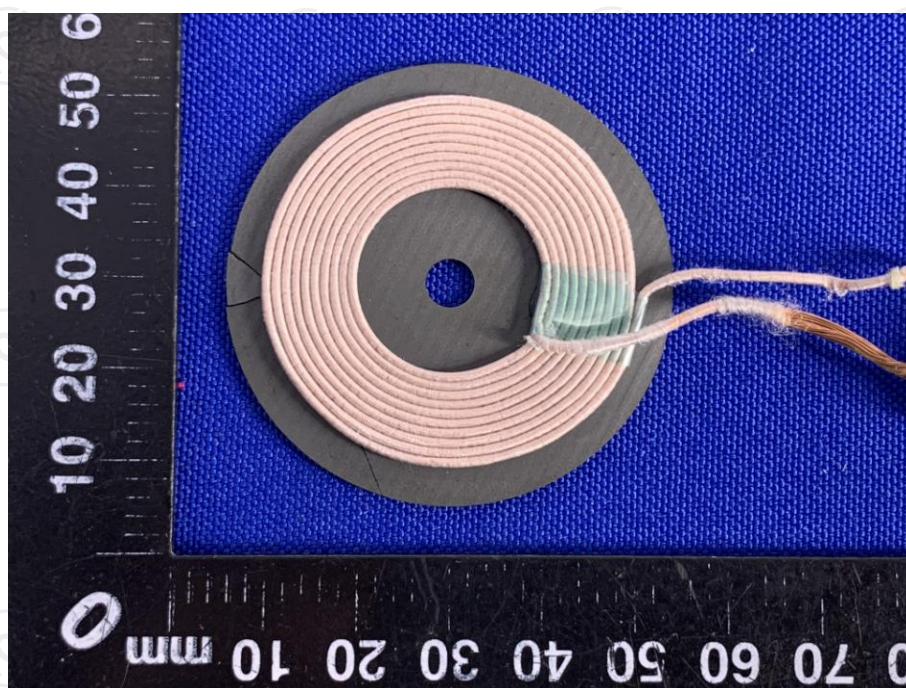
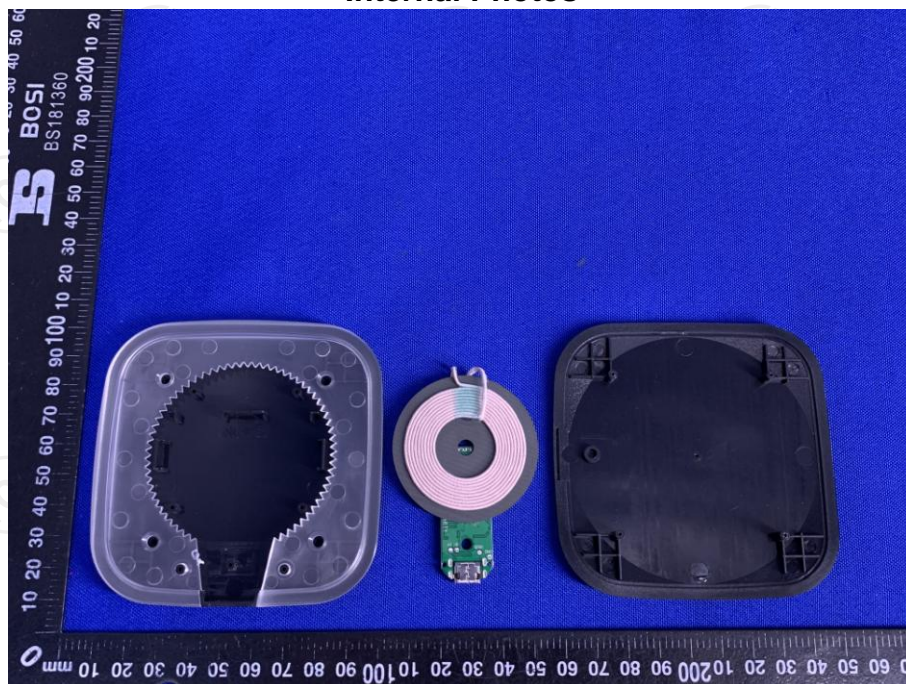




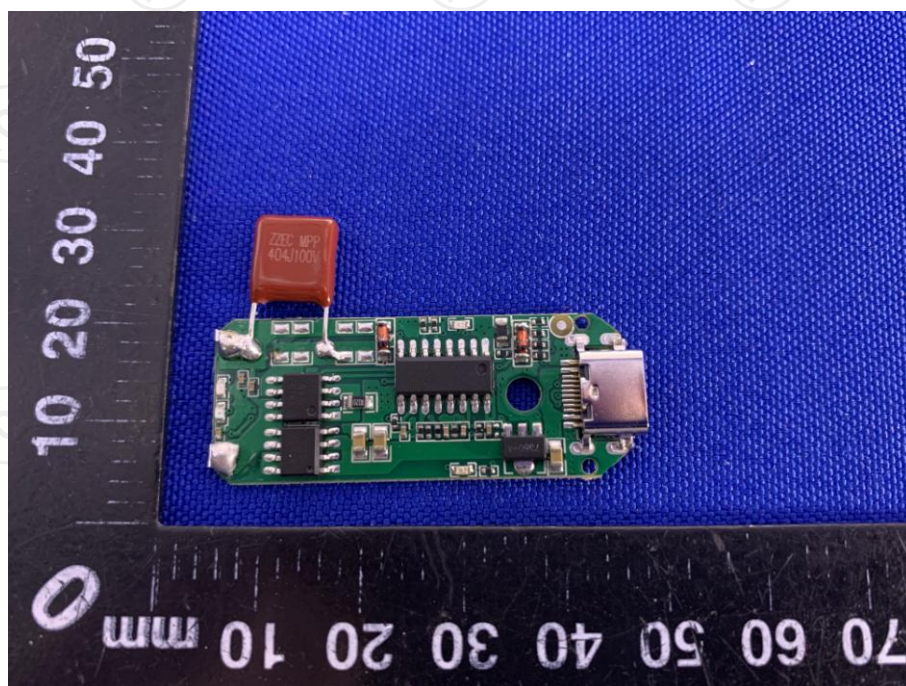
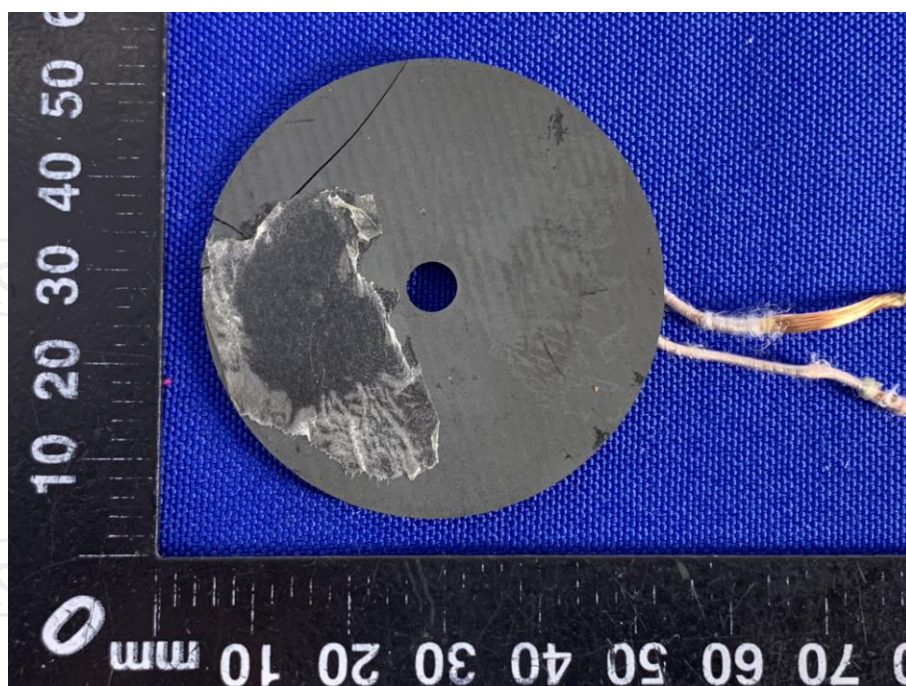


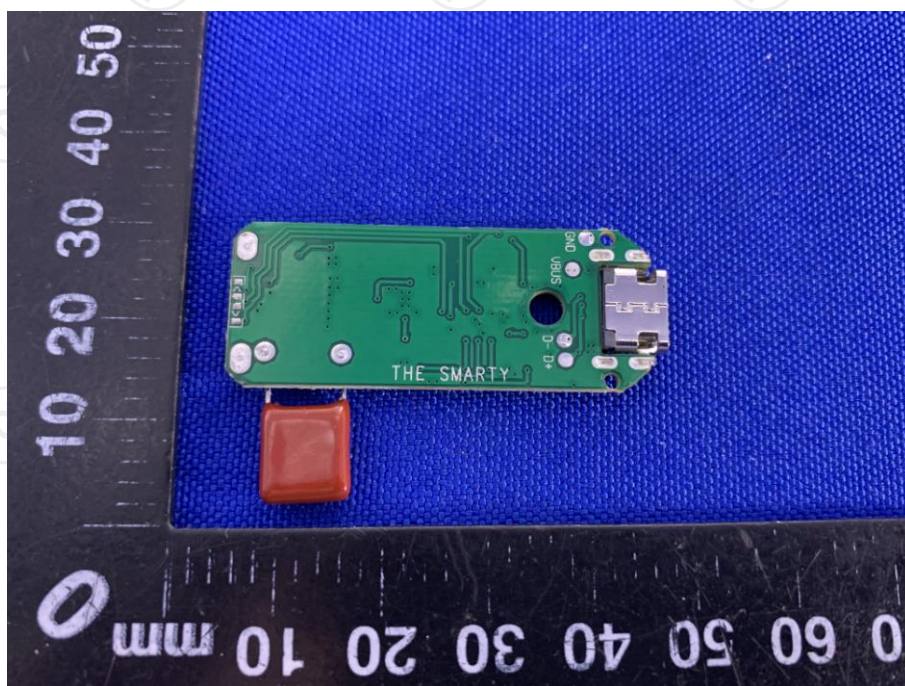
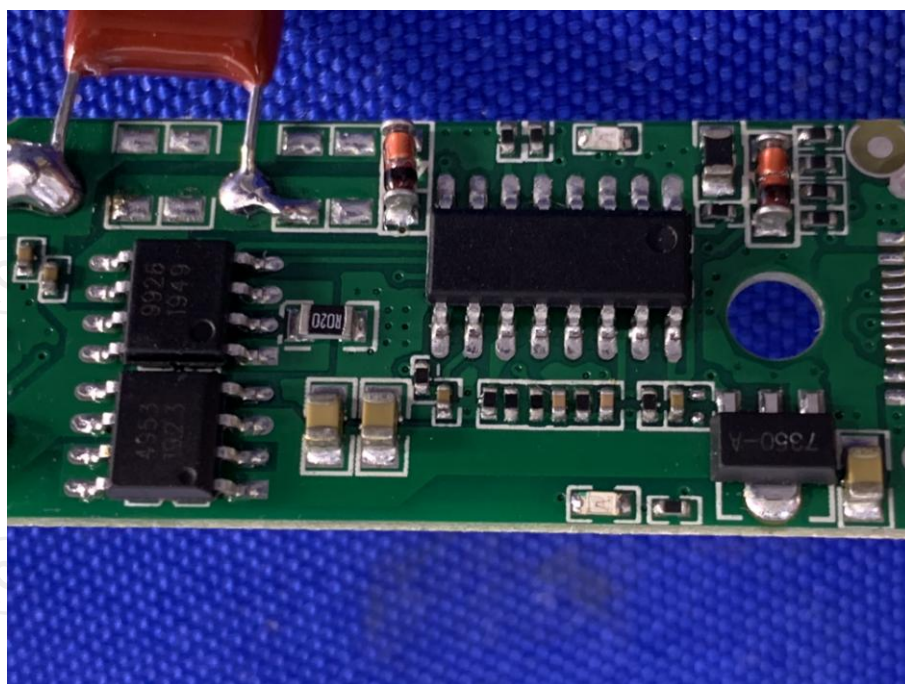


**Product: Wireless Charging Pad**  
**Model: A-WPAD**  
**Internal Photos**









**\*\*\*\*\*END OF REPORT\*\*\*\*\***