

MANUAL

TRACE HOME DIFFUSER

Welcome to aromas' world

CONTENT

WARNING

Please, read carefully this manual and keep it in good conditions before using the product.
Do not shake the device when is full of liquid.
Any incorrect use can cause damages.
Special attention is requested in presence of children.



Trace Home Diffuser Set.



Steel plate to attach the device to the wall.
Firstly, place the plate on the wall and then add the device to the plate.



2 USB plugs.



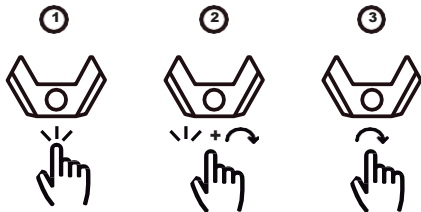
Micro USB cable for electrical connection.



Bottle.

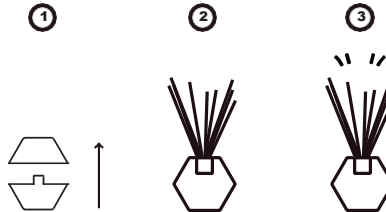
A) HOW DOES THE SET WORK?

- 1) Press the button once to turn on/off the led light.
- 2) Press the button and turn sideways to dim the led light.
- 3) Turn the button (without pressing) to control the internal fans intensity and the aroma.



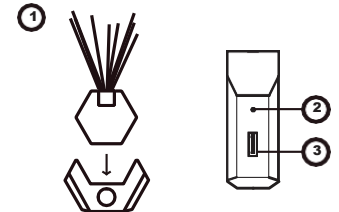
B) BOTTLE HOME

- 1) Remove the top of the bottle to take out the security tap.
- 2) Put back the top of the bottle and insert the Home Sticks.
- 3) Wait a few minutes to enjoy the aroma.



C) INSTALLATION

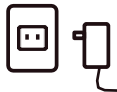
- 1) Place the Home Fragrance on the top of the Trace Home Diffuser.
- 2) Adjustable screw with allen key to attach the Home Fragrance to the Trace Home Diffuser set.
- 3) USB plug to connect with other devices.



D) HOW TO USE THE APP

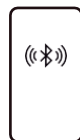
STEP 1

Connect the micro USB cable to the device and to the electrical current.



STEP 2

Enable the Bluetooth on your smartphone.



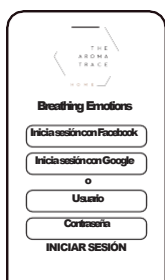
STEP 3

Scan the following QR code with your smartphone to download the THE AROMA TRACE app, start enjoying your device and control its functions comfortably via bluetooth.



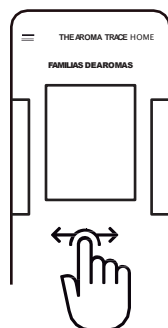
STEP 4

Open the app and sign up.



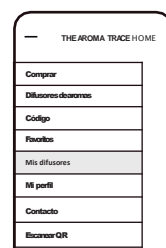
STEP 5

You can explore the app to know the 12 collections of scents, diffuser equipments and presentations available to you.



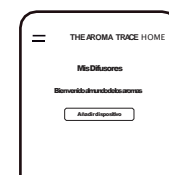
STEP 6

Open the menu on the app.



STEP 7

Select "My diffusers" and click on "Add new device".



STEP 8

The name "Trace Home Diffuser" will appear. Click on "Connect" (green color button).



WARNING

- Keep out of the reach of children and do not place the device in places where it may fall.
- Avoid the aroma or liquid fall on the equipment because it could damage the electronics.
- Do not ingest aroma.
- Do not expose the equipment to more power ups and downs of voltage.
- Do not mix the aroma with liquids or other aromas.
- Do not overturn the equipment.
- Cover the "Home Fragrance" in case of not using it.
- Keep at room temperature, do not expose it to high temperatures.
- Remove the Home Sticks with gloves.
- Avoid the contact of the aroma with the skin.

WARRANTY

One year warranty is included on the purchase of this product. You can receive repair service by any damage caused and confirmed by the manufacturer. The warranty time begins once the product has been activated by a consumer for the first time. The replacement policy does not guarantee the inclusion of transport costs and accessories. The warranty will be cancelled in the following circumstances:

- A. Damages caused by the consumer.
- B. Incorrect use. For example: using other brand oils, not from The Aroma Trace.
- C. Placing the product under water, and plugging it on not normal voltages.
- D. The product is out of the warranty date.
- E. If you do not have the purchase ticket with the shop sign and the date of purchase.

FCC WARNING STATEMENT

Changes or modifications not expressly approved by the party responsible for compliance could void the user's authority to operate the equipment. This equipment has been tested and found to comply with the limits for a Class B digital device, pursuant to Part 15 of the FCC Rules. These limits are designed to provide reasonable protection against harmful interference in a residential installation. This equipment generates uses and can radiate radio frequency energy and, if not installed and used in accordance with the instructions, may cause harmful interference to radio communications. However, there is no guarantee that interference will not occur in a particular installation. If this equipment does cause harmful interference to radio or television reception, which can be determined by turning the equipment off and on, the user is encouraged to try to correct the interference by one or more of the following measures: -- Reorient or relocate the receiving antenna.

-- Increase the separation between the equipment and receiver.

-- Connect the equipment into an outlet on a circuit different from that to which the receiver is connected.

-- Consult the dealer or an experienced radio/TV technician for help.

This device complies with Part 15 of the FCC Rules. Operation is subject to the following two conditions:

(1) This device may not cause harmful interference, and

(2) This device must accept any interference received, including interference that may cause undesired operation.