

Item No. IFLOMINIKIT01



# Welcome to iFLO PRO® MINI!

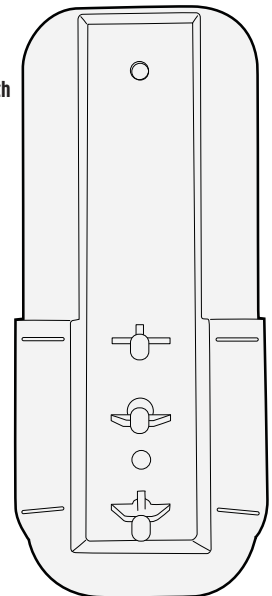
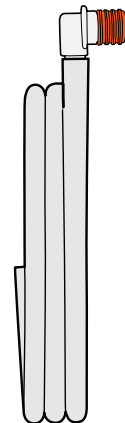
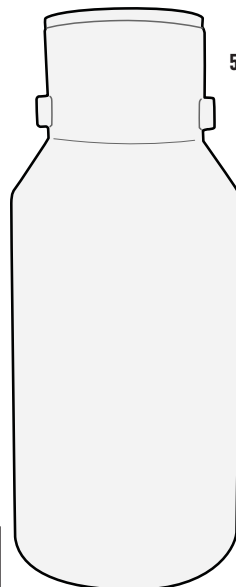
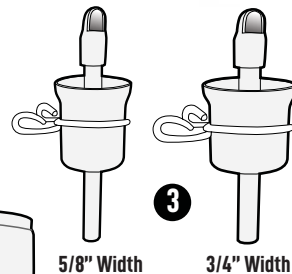
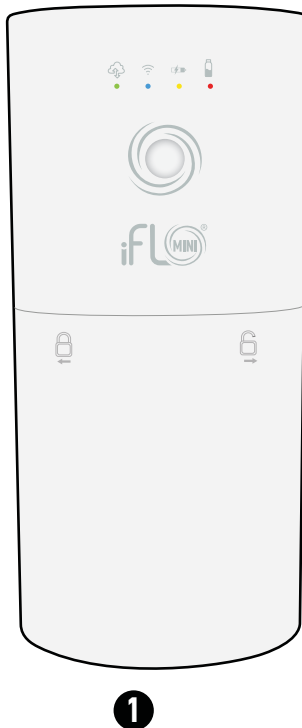
**IMPORTANT:** Before installation, make sure your company is set up on the iFLO PRO MINI App as a certified installer. Scan the QR code below to download the APP and begin the installation process.

**READ AND SAVE THESE INSTRUCTIONS FOR FUTURE REFERENCE**



## CONTENTS

1. iFLO PRO® MINI Device
2. 12oz Cartridge of iFLO Cleaning Solution
3. Outlet Adapter with spout (Note: there are 2 sizes)
4. Silicone Tubing with connector
5. iFLO® Hanger
6. 4 AA Batteries

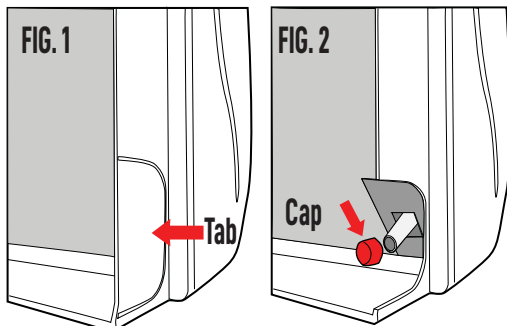


This device complies with Part 15 of the FCC Rules. Operation is subject to the following two conditions:  
(1) this device may not cause harmful interference, and  
(2) this device must accept any interference received, including interference that may cause undesired operation.

**FOLLOW THE DIRECTIONS ON OTHER SIDE FOR EASY SET UP OF THE IFLO PRO® MINI SYSTEM**

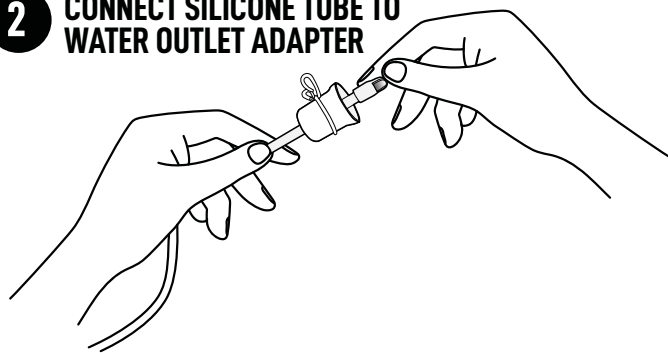


# 1 LOCATE WATER OUTLET ON BACK OF UNIT



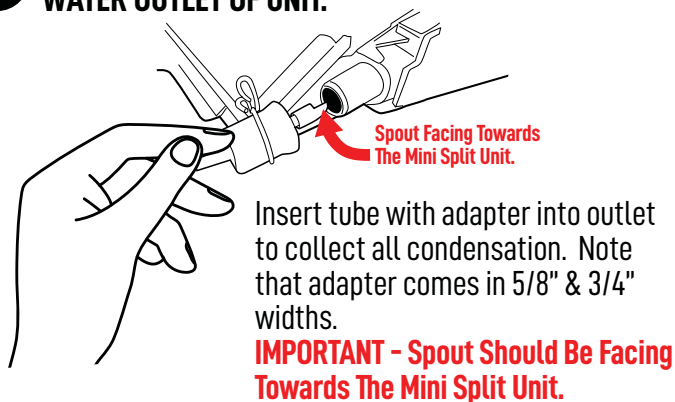
Locate water outlet on back of unit (FIG. 1). You can either knock tab to access or remove cover. When outlet is located, remove outlet plug (FIG. 2).

# 2 CONNECT SILICONE TUBE TO WATER OUTLET ADAPTER



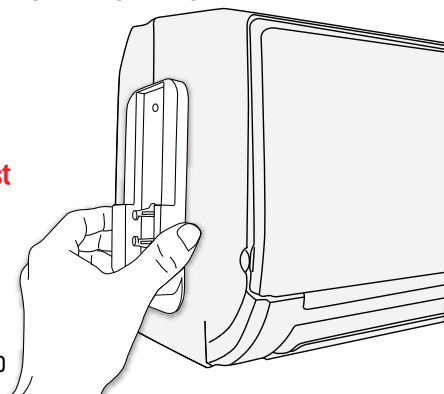
Connect silicone tube to condensation outlet adapter, make sure it is snug.

# 3 INSERT TUBE WITH ADAPTER INTO WATER OUTLET OF UNIT.



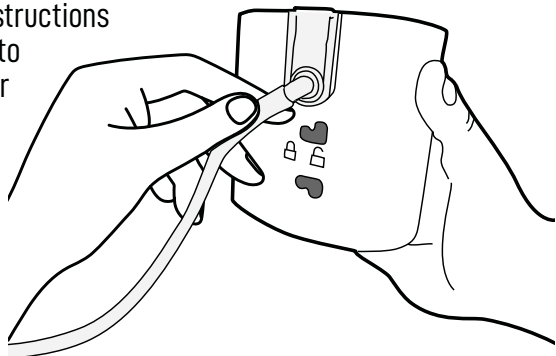
# 4 ATTACH DEVICE TO MINI SPLIT UNIT.

Using supplied wipe, clean surface of unit. Then peel label off sticker and place hanger on mini split unit.  
**(NOTE: Press Hanger Against Unit For 10 Seconds Before Attaching MINI Device)**  
Confirm it is side where water outlet is.  
**Note:** Screws are provided in case Mini device needs to be attached to wall next to mini split unit.

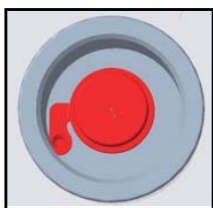
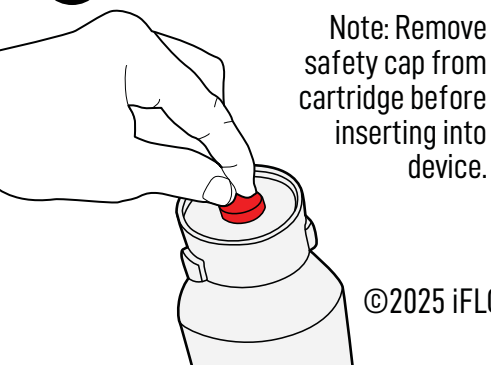


# 5 CONNECT SILICONE TUBE TO DEVICE

Attach tube to unit so it faces toward water outlet. Then hang device onto hanger turning left to lock into place. Now you can follow instructions from the app to complete your installation

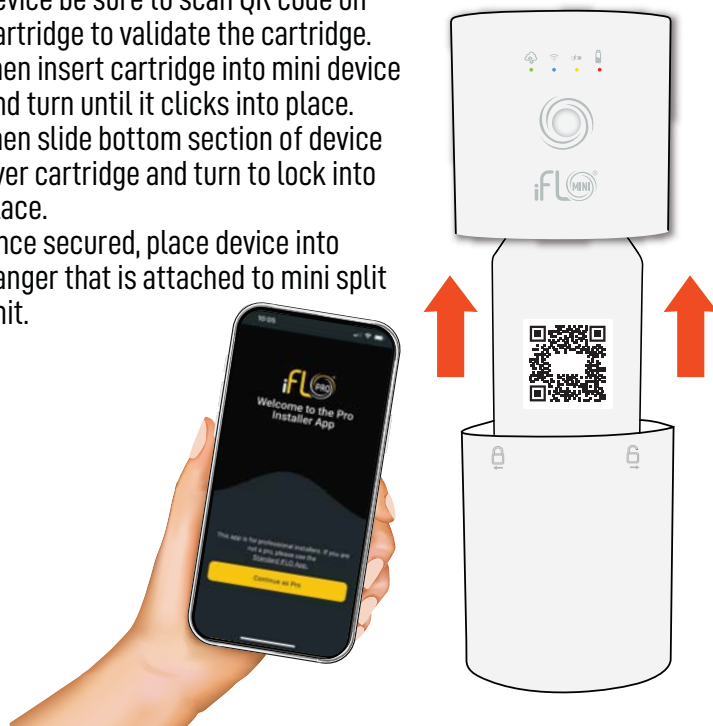


# 6 REMOVE SAFETY CAP BEFORE INSTALLING CARTRIDGE



# 7 INSERT CARTRIDGE INTO DEVICE

Note: Before inserting cartridge into device be sure to scan QR code on cartridge to validate the cartridge. Then insert cartridge into mini device and turn until it clicks into place. Then slide bottom section of device over cartridge and turn to lock into place. Once secured, place device into hanger that is attached to mini split unit.



Warning: Changes or modifications to this unit not expressly approved by the party responsible for compliance could void the user's authority to operate the equipment.

Note: This equipment has been tested and found to comply with the limits for a Class B digital device, pursuant to part 15 of the FCC Rules. These limits are designed to provide reasonable protection against harmful interference in a residential installation. This equipment generates, uses and can radiate radio frequency energy and, if not installed and used in accordance with the instructions, may cause harmful interference to radio communications. However, there is no guarantee that interference will not occur in a particular installation. If this equipment does cause harmful interference to radio or television reception, which can be determined by turning the equipment off and on, the user is encouraged to try to correct the interference by one or more of the following measures:

- Reorient or relocate the receiving antenna.
- Increase the separation between the equipment and receiver.
- Connect the equipment into an outlet on a circuit different from that to which the receiver is connected.
- Consult the dealer or an experienced radio/TV technician for help.

To maintain compliance with FCC's RF exposure guidelines, the distance must be at least 20cm between the radiator and your body, and fully supported by the operating and installation configurations of the transmitter and its antenna(s).