



## Quick Start Guide

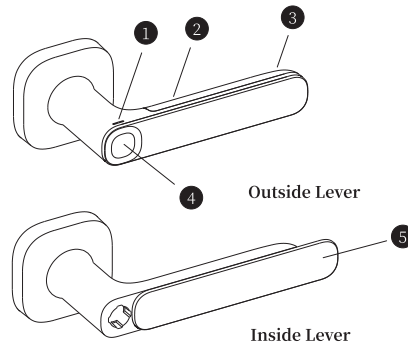
# Fingerprint Lock

Model No.: YSR3711

FCC ID: 2AUNQ-YSR3711

Hangzhou Youjia Technology Co., Ltd.

## Lock Show



- ① Indicator Light
- ② Card Identification Area
- ③ Battery Cover
- ④ Fingerprint Identification Area
- ⑤ Sliding Closure

## Warnings/Cautions

Please do not drench the Outside Lever.

Please do not wipe the fingerprint identification area with a damp cloth.

Please do not scratch the fingerprint identification area with a sharp object.

Please do not use new batteries with old ones.

Please do not discard used batteries at will.

## Instructions

Note: Make sure batteries are installed in the Lever.

### Download the APP:

Login Google Play or App Store to search “UJIA Smart”; Download “UJIA Smart” APP.

### Add device:

Register and login the account of “UJIA Smart” and keep Bluetooth ON; Click “Add Device” or click the symbol “+” at the upper right corner on “Home” page; Select “Auto Scan” to start the search; After the device is searched, click “next” to connect the lock for adding.

### Add / use fingerprint to open the door:

Login “UJIA Smart” APP and keep Bluetooth ON; Select the device and enter into “Setting” page; Click “Fingerprint Management” to enter into the page; Click “Add Fingerprint” or the symbol “+” at the upper right corner to input fingerprint according to directives; Put the finger with fingerprint input on the fingerprint identification area on the Outside Lever; Press down the Outside Lever to open the door when the green light flashes.

### Add/use card to open the door:

Login “UJIA Smart” APP and keep Bluetooth ON; Select the device and enter into “Setting” page; Click “Door card management” to enter into the page; Click “Add Door Card” or the symbol “+” at the upper right corner to activate card according to directives; Put the card close to the inside of the Outside Lever, near the battery compartment; Press down the Outside Lever to open the door when the green light flashes.

### Use APP to open the door:

Login “UJIA Smart” APP and keep the Bluetooth ON; Select the device to enter into the page, click the icon in the page center after APP is connected with the lock; Press down the Outside Lever to open the door when the green light flashes.

### View records:

Login “UJIA Smart” APP and keep the Bluetooth ON; Select the device to enter into the page; After APP is connected with lock, click “Opening Record”/ “Alarm” to enter into the page to view opening/alarm records.

## Basic Parameters

**Identification Mode:** Fingerprint, Card and Smartphone

**Speed of Unlocking by Fingerprint/Card:** <1s

**Storage Capacity:** 100PCS (include Fingerprints and Cards)

**Working Voltage:** 3.3 V (2 x Alkaline AAA batteries)

**Battery Life:** Up to 1 year (unlock 10 times a day)

**Working Humidity:** 40%RH ~ 80%RH (no frost)

**Working Temperature:** -20°C ~ 70°C

**Hardware Type:** Latch

**Door Thickness:** 1-5/16" to 2-3/16" (33 mm - 55 mm)

**Door Prep:** 2-1/8" (54 mm) diameter face hole & 1" (25 mm) diameter latch hole

**Backset:** Adjustable to 2-3/8" or 2-3/4" (60 mm or 70 mm)

**Outside Lever Material:** Premium zinc alloy

**Battery Cover Material:** PC + ABS fireproof material

**Finish:** Stoving varnish

**Low Power Alarm:** Yellow light flashes

**Fingerprint Reading-Ban:** If the fingerprint identification failure exceeds for successive 15 times, the lock will be locked.

**Card Reading-Ban:** If the card identification failure exceeds for successive 6 times, the lock will be locked.

**Alarm for Illegal Unlocking:** Quick buzzing

## Frequently Asked Question

### Opening door by APP fails

Check whether the batteries are loaded and working properly; Check whether the Bluetooth is ON; Check the networking status of mobile phone and perform operation again; Remove the batteries and re-load; Try to perform operation by approaching the lock.

### Opening door by card fails

Check whether the batteries are loaded and working properly; Confirm whether the card has been activated by APP; Remove the batteries and re-load.

### Opening door by fingerprint fails

Check whether the batteries are loaded and working properly; Confirm whether the fingerprint has been input by APP; Remove the batteries and re-load; Ensure that the finger is dry.

### Yellow light flashes when open the door

Low power, please replace 2 new AAA batteries in time.

### Red light flashes and buzzing for 5 times when open the door

If the fingerprint identification failure exceeds 15 times or the card identification failure exceeds 6 times, the lock will be locked, please use APP to open the door or try to unlock the door with fingerprint/card a minute later.

### No response when open the door

Please check if the battery is loose; If the battery is dead, please replace the battery.

### Login/registration cannot be performed normally

Check whether the network running properly.

### How to reset your device

Login “UJIA Smart” APP; Select the device to enter into page; Click the “Edit” icon at the upper right corner; Click “Remove Device” to reset the lock.



Hidden High Tech

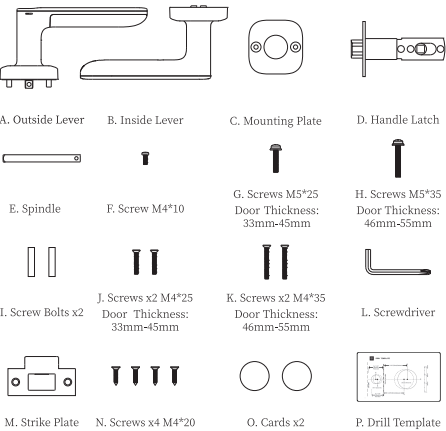
Fingerprint Lock

Hangzhou UJIA Technology Co., Ltd.

Made in China

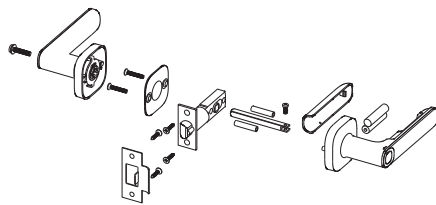
CE FCC SRRC

Before You Start



Privacy Function Show

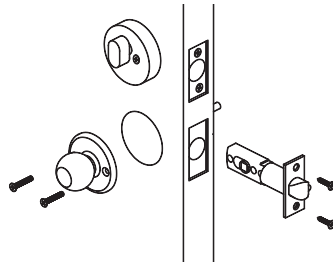
Installation the same regardless of model shown.



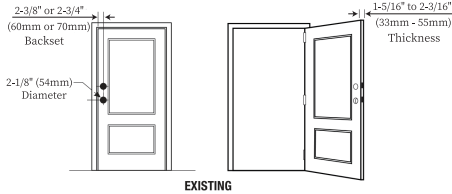
Install in Order

1. Prepare Door

1) Open door and remove your existing Latch.



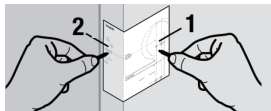
2) Check your door prep measurements, and record.



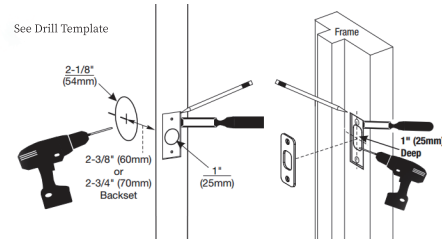
3) Prepare door & frame.

Necessary only for new doors or adjusting existing prep.

A. Use template to mark holes on door

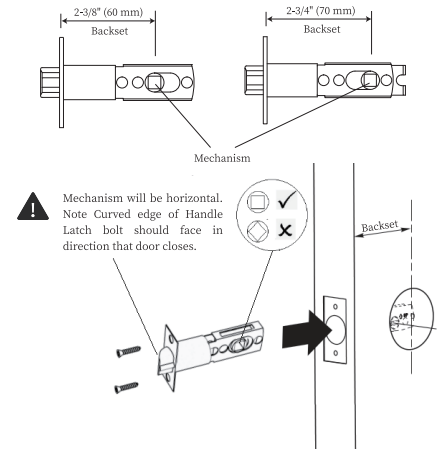


B. Drill Holes



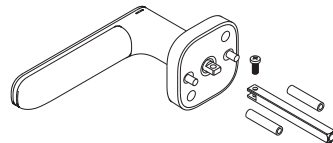
2. Install Handle Latch

Check dimensions, if necessary, adjust Handle Latch, install Handle Latch.

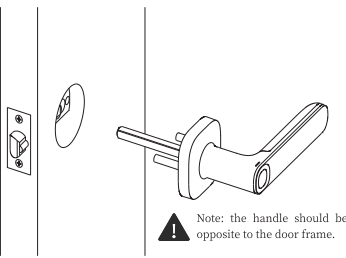


3. Install Outside Lever

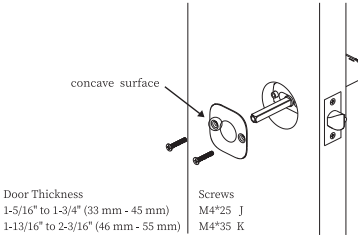
1) Prepare Outside Lever



2) Insert Outside Lever

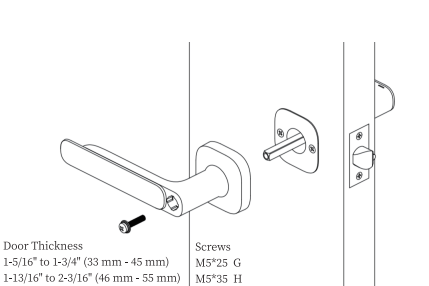


3) Install Mounting Plate



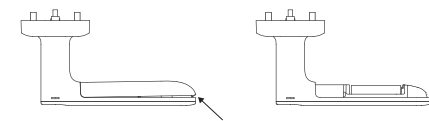
4. Install Inside Lever

Open Sliding Closure, tighten screw, close Sliding Closure.



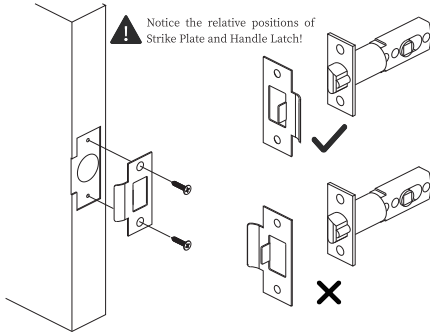
5. Install Batteries

Remove Battery Cover, load batteries, install Battery Cover.

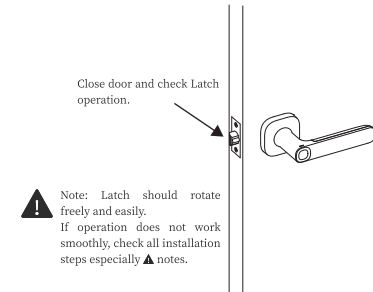


6. Installing Strike Plate

Necessary only for new doors or adjusting existing prep.



7. Testing Operation



Congratulations, you've installed the UJIA Fingerprint Lock!

## FCC Warning

This device complies with part 15 of the FCC Rules. Operation is subject to the following two conditions:

(1) This device may not cause harmful interference, and (2) this device must accept any interference received, including interference that may cause undesired operation.

Any Changes or modifications not expressly approved by the party responsible for compliance could void the user's authority to operate the equipment.

**Note:** This equipment has been tested and found to comply with the limits for a Class B digital device, pursuant to part 15 of the FCC Rules. These limits are designed to provide reasonable protection against harmful interference in a residential installation. This equipment generates uses and can radiate radio frequency energy and, if not installed and used in accordance with the instructions, may cause harmful interference to radio communications. However, there is no guarantee that interference will not occur in a particular installation. If this equipment does cause harmful interference to radio or television reception, which can be determined by turning the equipment off and on, the user is encouraged to try to correct the interference by one or more of the following measures:

- Reorient or relocate the receiving antenna.

- Increase the separation between the equipment and receiver.

- Connect the equipment into an outlet on a circuit different from that to which the receiver is connected.

- Consult the dealer or an experienced radio/TV technician for help.

\* RF warning for Portable device:

The device has been evaluated to meet general RF exposure requirement. The device can be used in portable exposure condition without restriction.