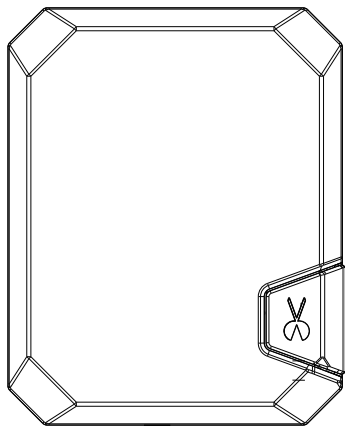


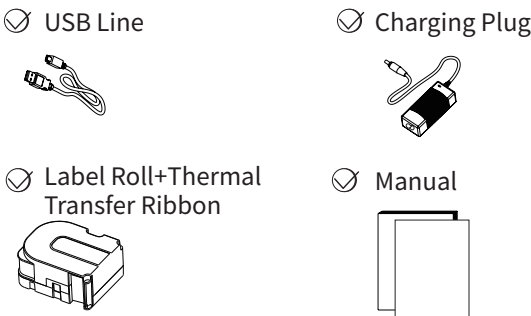
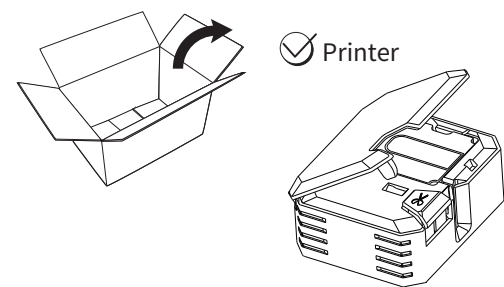
MakeID

Portable Bluetooth Label Printer  
User Manual

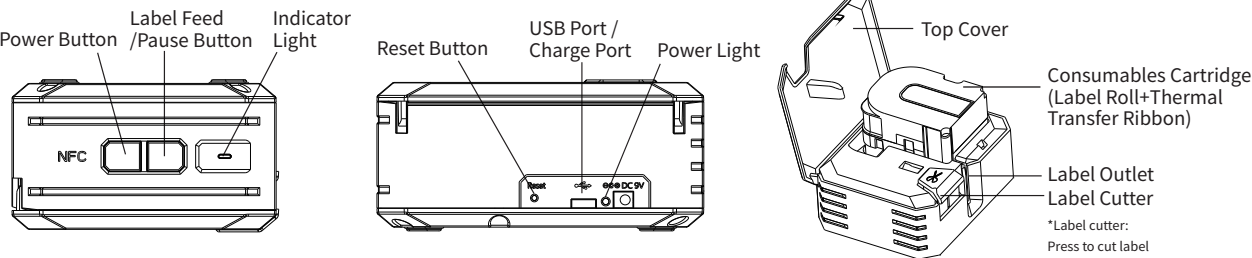
P31



Product Packing



Button Function



**Power Button**  
Press and hold this button for 3 seconds to turn on/off the printer.

**Label Feed/Pause Button**  
When the printer is on and idle:  
Short Press: Initiates the paper feed test operation. (Feeds out one die-cut label or a segment of continuous label paper, then stops.)  
Long Press: Print printer self-test information.  
During Printing:  
Short Press: Completes the current print job, then pauses. Press again to resume the paused print task.

**Indicator Light**  
The status indicator light displays different colors to indicate the printer's status:  
Green: Normal operation.  
Red Flashing: An error has occurred. Follow the instructions in the APP or PC software to resolve the issue.  
Yellow: Printing is paused.

**Reset Button**  
Press this button to reset the printer to its default settings.

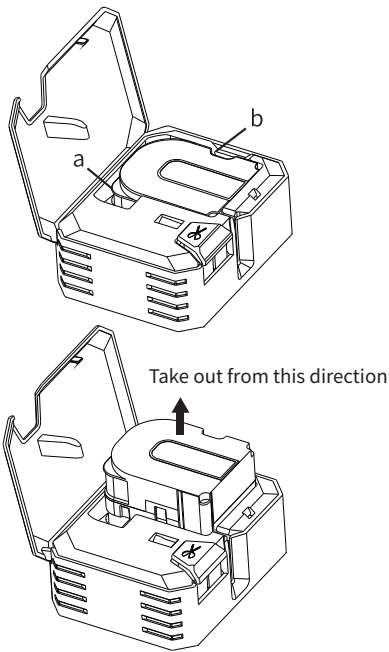
**USB Port / Charging Port**  
This port is used for both data transfer and charging. Connect the printer to a computer to print, or connect the power cord to a charging plug to charge the printer.

**Power Light**  
Indicates the power and charging status:  
Red: The printer is charging.  
Green: The printer is fully charged.

Printer Parameter

Printing Method:	Thermal Transfer
Resolution:	300dpi
Print Width:	1 inch
Print Speed:	25.4mm/s Max.
Printhead Life:	≥50km
Communication Port:	USB, Bluetooth
Operation Mode:	APP, PC
Input:	DC 9V=2A or DC 5V=2A
Battery Rating:	2600 mAh
Battery Type:	Internal, non-removable lithium-ion Battery
Working Condition:	0°C~40°C, 5%-85%RH (frost-free)
Storage Condition:	-20°C~60°C, 5%-90%RH (frost-free)
Printer Size:	132*105*59mm
Net Weight:	About 580g

Change the Label & Ribbon Box

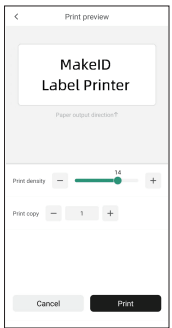


- 1.open the cover
- 2.take out the consumables box (hold a and b points, see picture above)
- 3.install a new consumables box

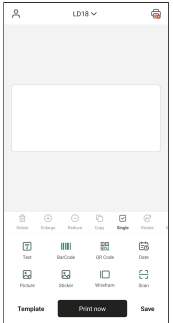
APP Print



1.Scan to get APP



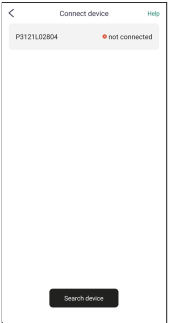
6.Print



2.Enter APP



5.Edit the contents



3.Connect Bluetooth



4.Get printing templates

## Daily maintenance

### Print head cleaning

The print head should be cleaned when any of the following occurs:

1. The printing is not clear,
2. Certain column in the vertical direction of the label is not clear,
3. Each time when consumables used up.

### Print head cleaning steps:

1. Turn off the printer, open the upper cover, and take out the consumables cartridge;
2. If you have just finished printing, please wait for the print head to cool down completely;
3. Use a soft cotton, dipped in absolute ethanol (wrung out) to wipe off the dust and stains on the surface of the print head.
4. Wait for 3-5 minutes, after the absolute ethanol has completely evaporated, then install the label box.

### Note:

1. Must ensure that the power is turned off when maintenance.
2. Do not touch the surface of the print head with hands and metal objects, and do not use tools such as tin to scratch the surface of the print head/printing glue and sensor;
- 3 Do not use gasoline, acetone and other organic solvents;
- 4.Wait for the absolute ethanol to evaporate completely, and then turn on the power to continue print.

## Failure indication

When the printer has failures, refer to the following methods accordingly. If the fault cannot be solved, please contact us at jryx@jingjingfun.com for further assistance.

Indicator Light	Prompt	Solution
Red light flash	Cover opened	Close the cover
	Consumables box abnormal	Re-install the consumables box, or change the consumables box
	Label cutter stuck	Clean the labels at the cutter
Yellow light on	Printhead over-heated	Print after the print head cools down
	The printer is in a paused state	Press label feed /pause button again to return to normal
Green light flash	Low battery	Charge the printer

## Warranty Policy

### Warranty Period:

MakeID will provide you with free limited liability repair or product replacement services for 1 year from the date of purchase of this product in the event of a hardware failure on the condition that you have installed and used this product in full accordance with the normal working conditions and methods specified in this user manual.

### Kind Reminder:

1. Documents such as user manual, guide card, and all cables such as the charging cable, etc that come with the product are not covered by the warranty.
2. Discounted or complimentary items that come with the product are not covered by the warranty.
3. Order number, contact information and delivery details which shall include your name, phone number and full address are needed for after-sale services of your product due to quality or function issues within the warranty period.

### Ineligibility for the Warranty Service:

Malfunctions or damage of this product belonging to the following situations are not covered by the free warranty, please choose paid repair service:

1. The product or its components exceed the warranty period.
  2. Failure to install and use in accordance with the manual.
  3. Repaired or disassembled by non-MakeID staff.
  4. Non-MakeID labels or unsupported print media are used.
  5. The operating environment does not conform to the conditions specified in the manual.
  6. Substandard packaging or transportation methods are used by users during the transportation and handling of the product.
  7. Non-MakeID components are used.
  8. Malfunctions or damage due to force majeure such as man-made or natural disasters (e.g. earthquake, fire, etc.)
  9. Other malfunctions or damage that is not caused by product quality issues.
- This policy does not affect your legal rights as a consumer.

## Safety Notes

Your personal safety is very important in the operation and maintenance of the product. This manual includes warnings and precautions for safe operation. Please read carefully and understand all warnings and precautions before use.

Do not attempt to repair or adjust the product yourself. If you still fail to fix the troubles according to the suggested methods described in this manual, please power off the product and contact us at jryx@jingjingfun.com for further assistance.

### Precautions

- 1.Do not use the printer for any use or purpose other than those described in this manual, as that may cause accidents or damage to the product.
- 2.Only MakeID official labels can be used for this printer. Thus, please do not use other branded labels as the replacement, as this may cause damage to the printhead and shorten its life. damage to the printhead caused by the use of poor-quality labels are not covered by the warranty.
- 3.The print head is a heat-generating component. Do not touch the print head and its nearby components during printing or just after printing.
- 4.Do not touch the printhead to prevent static electricity from causing damage to sensitive components. If the printhead gets dirty, please clean it with anhydrous alcohol.
- 5.Do not scratch the printhead with hard objects. damage to the printhead caused by improper maintenance or use are not covered by the warranty.
- 6.Do not place any foreign objects outside the label exit, as this may cause

damage to the printer.

- 7.Do not press or hit the printer, as this may cause damage to the components or the printer to malfunction.
8. If the printer is soaked in water or damaged, stop using it immediately.
9. The printer should be kept away from direct sunlight or the rain, heaters and other heat-generating devices, dashboards, the rear of the cars, nor exposed to extremely high or low temperatures, high humidity, or dusty areas. It is recommended to use the printer at a temperature of 0°C ~ 40°C, humidity 5% ~ 85% to ensure a good printing effect and prevent the printhead from being burnt.
10. If there is a large temperature difference between indoors and outdoors, it is not recommended to use the printer immediately when it is taken from outdoors to indoors. It needs to be left to stand for a period of time to ensure that the printer is frost-free before use;
11. Do not stick the label where your hands often touch. Sweat and friction will make the printings fade.
12. Do not leave the labels in contact with chemical liquids, for a long period, otherwise, it will affect the preservation time.
13. To prevent labels from jamming due to multiple printings, please remove and tear off the label at the label exit after each printing task is finished.
14. Do not disassemble the printer to avoid possible electrocution, mechanical injury, or causing damage to the printer components and other accidents.
15. Power off the printer immediately to avoid burns if the printer shows abnormalities such as emitting smoke or odor, etc.
16. To prevent unexpected situations, do not force to open the cover to

remove the label roll when the printer is operating.

17. Do not touch the printhead to avoid burns because the printhead is still in a high-temperature state after the printings have just finished.
18. As the printhead is a precision component, and to better protect the printhead and extend its life, it is recommended:
  - a. Not to print more than 8 meters for each continuous printing.
  - b. Not to print more than a total length of 30 meters per day.
19. when the printing effect meets the requirements of use, it is suggested that the user should set the printing density/darkness as low as possible, so as not to affect the service life of the print head.
20. Due to the structural reason, the printhead is a fragile component, please pay attention to the following notes to avoid corrosion.
  - a. Do not touch the printhead surface.
  - b. Do not use carbon ribbons and label paper that contain sodium (Na) ions, potassium (K) ions, and chlorine (Cl) ions.
  - c. Printhead should be avoided contact with any liquids or wet objects.
  - d. Printhead can be only cleaned with anhydrous alcohol.
- 21.Please keep this manual properly for reference.



### FCC COMPLIANCE STATEMENT:

This device complies with part 15 of the FCC Rules. Operation is subject to the following two conditions:

(1) This device may not cause harmful interference, and (2) this device must accept any interference received, including interference that may cause undesired operation.

**Note:** This equipment has been tested and found to comply with the limits for a Class B digital device, pursuant to Part 15 of the FCC Rules. These limits are designed to provide reasonable protection against harmful interference in a residential installation. This equipment generates, uses and can radiate radio frequency energy and, if not installed and used in accordance with the instructions, may cause harmful interference to radio communications.

However, there is no guarantee that interference will not occur in a particular installation. If this equipment does cause harmful interference to radio or television reception, which can be determined by turning the equipment off and on, the user is encouraged to try to correct the interference by one or more of the following measures:

Reorient or relocate the receiving antenna.Increase the separation between the equipment and receiver.Connect the equipment into an outlet on a circuit different from that to which the receiver is connected.Consult the dealer or an experienced radio/TV technician for help.

**Warning:** Changes or modifications to this unit not expressly approved by the part responsible for compliance could void the user's authority to operate the equipment.

### FCC Radiation Exposure Statement

The device has been evaluated to meet general RF exposure requirement. The device can be used in portable exposure condition without restriction.