

EC-04-ATT
instruction manual



Charging contacts

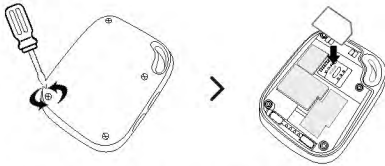


LED Light

Insert the SIM card

The SIM card is not included in the package.

A Nano SIM card is available from the user's local operator.



- Unscrew the back cover and remove.
- Insert the SIM card and make sure it's activated and in credit.

- Replace the cover and tighten the screws.

TIP Before installing the SIM card, check if the SIM card has a PIN code or not, if yes, please use a mobile phone to remove the card's PIN code.

Charge your device

There are two ways to charge your device.

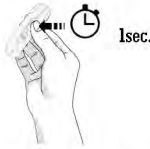


Charging base

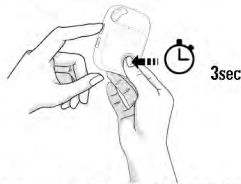
- Place the device on the charging base.
- Connect the USB cable from the charging base to the AC adaptor.

The charging base light will glow when charging and turn solid when fully charged.

Switching device on and off



- **To turn the device on:** press the CALL button for 1 second, all the LEDs will flash rapidly. The device can also be turned on automatically by charging via magnetic USB cable or put it into the docking station.



- **To turn the device off:** press and hold the side button and SOS button together for 3 seconds until the LEDs turn off.

What do the lights mean?

Cellular signal indicator--Green

	Green	
	Light shows a single flash rapidly every 3 seconds	Light shows a double flash rapidly every 3 seconds
Meaning	The device has a stable cellular signal	The device is registered to the cellular network

Positioning indicator--Blue

	Blue		
	Light shows a single flash rapidly every 3 seconds	Light shows a double flash rapidly every 3 seconds	Light off
Meaning	The device has no latest location fix	The device has latest location fix	The device is not fixing the latest location

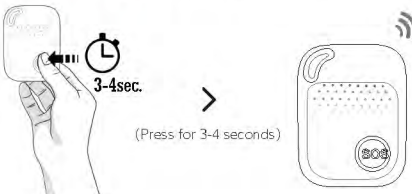
Power indicator--Red

	Red	
	Light on (solid)	Light shows a double flash rapidly every 3 seconds
State	Device has been fully charged	BLE connected

	Red	
	Light blinking quickly	Red off or blinking slowly
State	Battery power is lower than 20%	The device is charging

www.eviewgps.com

Activating an SOS alarm



When you need help, press the SOS button for 3-4 seconds until you hear a voice prompt, indicating an SOS alarm. This starts the sequence of sending a "help me!" text message to your emergency contact numbers followed by the outgoing calls.

- If the device fails to connect to the first number, it will call the second number after delay of 10 seconds. In case the second number fails to be connected as well, the system will connect to the third number etc.

- Between each call, there will be a 10-seconds delay, during which time, the user can **stop the call sequence** or prevent a possible false alarm by pressing the SOS button.

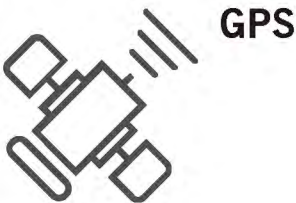
- Use the side buttons +/- to adjust the sound volume during a call.

TIP Please remember to program emergency contact numbers. It is not mandatory for all ten authorized numbers to be set, however a minimum of one must always be set.

TIP Please be patient during the call sequence. There can be short delays as the alarm calls phones which maybe out of range or delivered to recipients' voicemail.

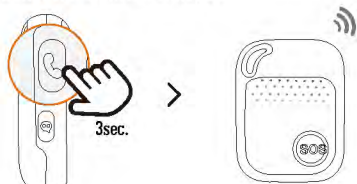
Getting a GPS fix

- To get an initial location for the GPS features, use outdoors or near a window so the device can get a fix on the satellites. This could take a few minutes depending on your environment.



Making a phone call

- To make a call, press the CALL button for 3 seconds and you will hear a beep, and then it will dial the defined number.

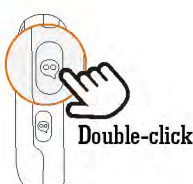


- To end the call, press the SOS button.

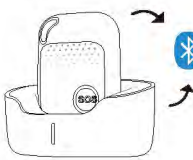


Silent mode button

- Double-click this button to **turn off voice warnings**; double-click once more to **turn voice warnings on**.



- Put device on charging base more than 30 seconds, and they will be paired automatically via Bluetooth.



Specification:

- Dimension: 62mm*47mm*17mm
- Weight: 53g
- Battery: Rechargeable, 3.7V, 950mAh
- Charging voltage: 5V DC
- Waterproof: IP67
- 4 locating technologies: GPS, BLE, WIFI, LBS

Caution:

Please comply with the instructions to extend the unit life:

- Don't use or store the unit in dusty places.
- Avoid storing or using the unit likely to be exposed to extremes of temperature.
- Clean the unit with a piece of dry cloth. Don't clean using chemicals or detergents.
- Don't disassemble or refit the unit.
- Using other batteries will cause unwanted situation.

Warning: Keep the IMEI and SIM confidential to maintain Privacy and security.

IC Warning

This device complies with Industry Canada's licence-exempt RSSs. Operation is subject to the following two conditions:
(1) This device may not cause interference;
(2) This device must accept any interference, including interference that may cause undesired operation of the device.

Le présent appareil est conforme aux CNR d'Industrie Canada applicables aux appareils radio exempts de licence. L'exploitation est autorisée aux deux conditions suivantes:
(1) l'appareil ne doit pas produire de brouillage, et
(2) l'utilisateur de l'appareil doit accepter tout brouillage radioélectrique subi, même si le brouillage est susceptible d'en compromettre le fonctionnement.

The information listed above provides the user with information needed to make him or her aware of a RF exposure, and what to do to assure that this radio operates within the FCC exposure limits of this radio.

The device complies with RF specifications when the device used at 0mm from the body. Third-party belt-clips, holsters, and similar accessories used by this device should not contain any metallic components. Body-worn accessories that do not meet these requirements may not comply with RF exposure requirements and should be avoided. Use only the supplied or an approved antenna.

Quick Start Guide



FCC Warning
15.19 Labeling requirements.
This device complies with part 15 of the FCC Rules. Operation is subject to the following two conditions: (1) This device may not cause harmful interference, and (2) this device must accept any interference received, including interference that may cause undesired operation.
15.21 Information to user.
Any Changes or modifications not expressly approved by the party responsible for compliance could void the user’s authority to operate the equipment.

15.105 Information to the user.
Note: This equipment has been tested and found to comply with the limits for a Class B digital device, pursuant to part 15 of the FCC Rules. These limits are designed to provide reasonable protection against harmful interference in a residential installation. This equipment generates uses and can radiate radio frequency energy and, if not installed and used in accordance with the instructions, may cause harmful interference to radio communications. However, there is no guarantee that interference will not occur in a particular installation. If this equipment does cause harmful interference to radio or television reception, which can be determined by turning the equipment off and on, the user is encouraged to try to correct the interference by one or more of the following measures:

- Reorient or relocate the receiving antenna.
 - Increase the separation between the equipment and receiver.
 - Connect the equipment into an outlet on a circuit different from that to which the receiver is connected.
 - Consult the dealer or an experienced radio/TV technician for help.
- Absorption Rate (SAR) information:
This device meets the government’s requirements for exposure to radio waves. The guidelines are based on standards that were developed by independent scientific organizations through periodic and thorough evaluation of scientific studies. The standards include a substantial safety margin designed to assure the safety of all persons regardless of age or health.

FCC RF Exposure Information and Statement
The SAR limit of USA (FCC) is 1.6 W/kg averaged over one gram of tissue. This device was tested for typical body-worn operations with the back of the device kept **0mm** from the body. To maintain compliance with FCC RF exposure requirements, use accessories that maintain a appropriate separation distance between the user’s body and the back of the device. The use of belt clips, holsters and similar accessories should not contain metallic components in its assembly. The use of accessories that do not satisfy these requirements may not comply with FCC RF exposure requirements, and should be avoided. Use only the supplied or an approved antenna.