

Personal

Mobile

Alarm Device

Quick Start Guide

www.eviewgps.com

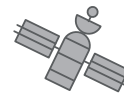
Cellular



GPS/Glonass



WIFI



BLE

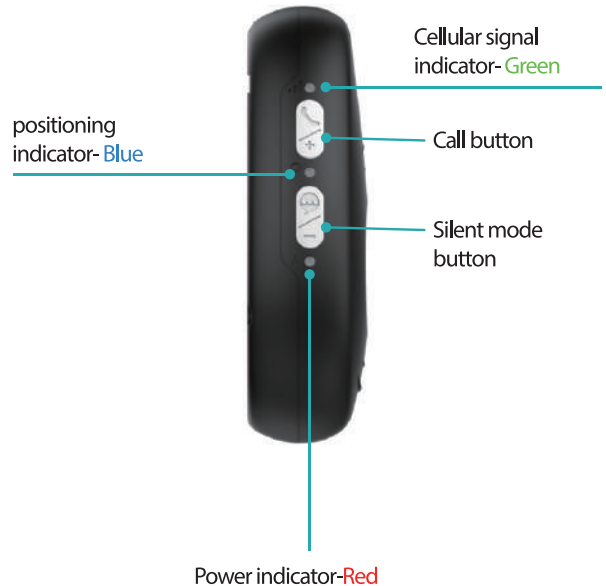


Getting to know your device

- Front -



- Side -

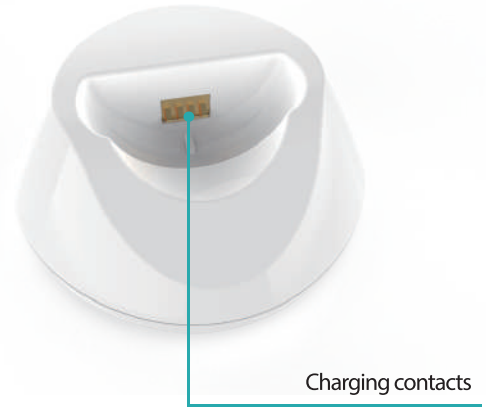


Charging Base

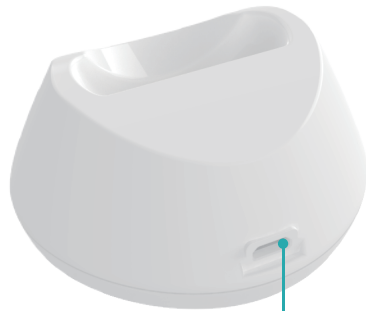
- Back -



- Front -



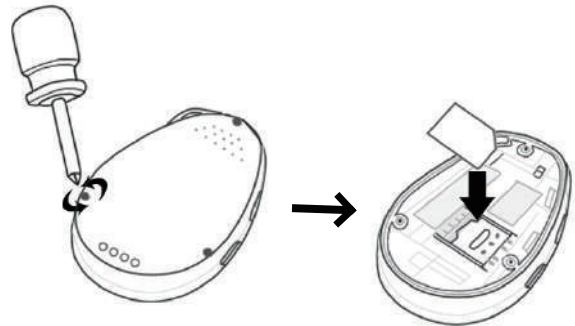
- Bottom -



USB cable

Put the SIM card

The SIM card is not included in the package.
A Nano SIM card is available from the user's local operator.



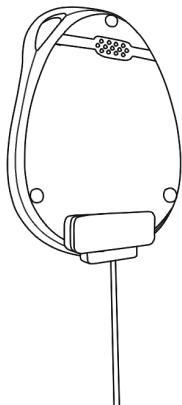
- Unscrew the back cover and remove the cover.
- Insert the SIM card and make sure it's activated with credits.
- Put the cover back and tighten the screws.

TIP

Before installing the SIM card, check if the SIM card has a PIN code or not, if yes, please use a cell-phone to remove the card's PIN code.

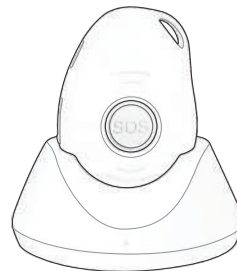
Charging your device

There are two ways to charge your device.



4.1/Charging by magnetic USB cable

- When placing the magnetic USB cable on the device charging contacts make sure it is positioned correctly.
- The power indicator (red light) should blink when charging and remain solid when fully charged.



4.2/ Charging by charging base

- Place the device on the charging base
- Connect the USB cable from charging base to the AC adaptor.

The charging base light will glow when charging and turn solid when fully charged.

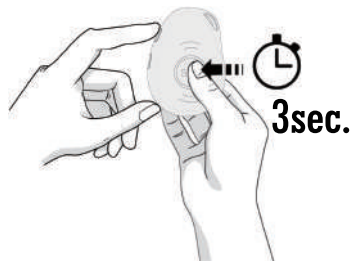
For the first time use, please fully charge the battery for around 2~3 hours

When the battery level falls below 20% it will send a low battery warning message to people on the contact list via text message or APP.

Switching on and off device



- **To turn on the device:** press the CALL button for 1 second, all the LEDs will flash rapidly. The device can also be turned on automatically by charging via magnetic USB cable or putting it into the docking station.



- **To turn off the device:** press and hold the side button and SOS button together for 3 seconds until the LEDs turn off.

What do the lights mean?

● Cellular signal indicator--Green

Green	Light shows a single flash rapidly every 3 seconds	Light shows a double flash rapidly every 3 seconds
Means	The device has a stable Cellular signal	The device is registered to the Cellular network

● Positioning indicator--Blue

Blue	Light shows a single flash rapidly every 3 seconds	
Means	The device has no latest location fix	

Blue	Light shows a double flash rapidly every 3 seconds	Light Off
Means	The device has latest location fix	The device is not fixing the latest location

● Power indicator--Red

Red	Red ON (solid)	Red shows a double flash rapidly every 3 seconds
State	Device has been fully charged	BLE connected

Red	Red Blinking Quickly	Red Off or blinking slowly
State	Battery power is lower than 20%	The device is charging

Activating an SOS Alarm



When you need help, press the SOS button for 3-4 seconds till you hear a voice prompt of activating an SOS alarm. This starts the sequence of "help me!" text message send to your emergency contact numbers followed by the outgoing calls.

- If the device fails to connect to the first number, it will call the second number after delay of 10 seconds. In case the second number fails to be connected as well, the system will connect to the third number etc.

- Between each call, it will have 10 seconds delay, during this time, user can **stop call sequence** or prevent a possible false alarm by pressing the SOS button. The receiver of the call can also stop call sequence by **pressing 1 on their mobile phone** during two way talking.
- Use the side buttons +/- to adjust the sound volume during a call.

TIP

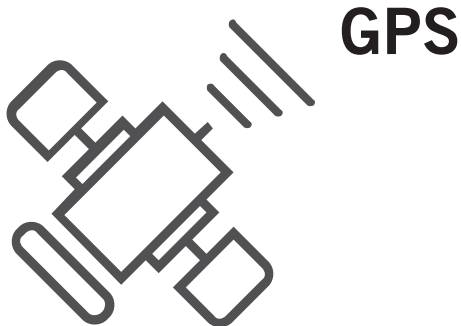
Please remember to program emergency contact numbers. It is not mandatory for all ten authorized numbers to be set, however a minimum of one must always be set.

TIP

Please be patient during the call sequence. There can be short delays as the alarm calls phones who maybe out of range or delivered to people's voicemail.

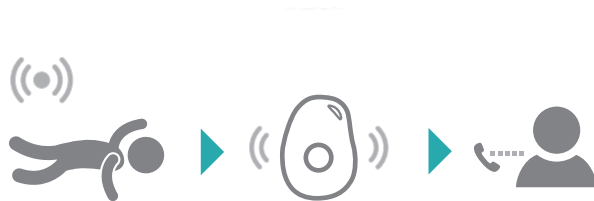
Getting a GPS fix

- To get an initial fix for the GPS features, use outdoors or near a window so the device can get a fix on the satellites. This could take few minutes according to your environment.



Fall down alarm

- Device detects a fall and it will automatically send an alarm to emergency contacts.



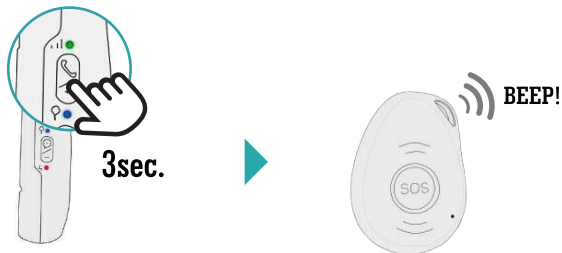
Due to the daily life activities (like some sports, sit back on a coach, etc), device may detect a fall incorrectly, this situation may cause false alarm. However, users can manually cancel the fall alert by pressing SOS button during its beeping.

TIP

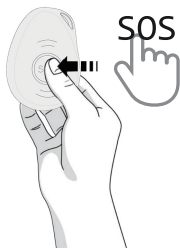
Very Important: Because it still has few chances for the non-detected falling down, we still strongly recommend user to press SOS button when it has emergency situation.

Making a Phone Call

- To make a call, press side call button for 3 seconds and you will hear a beep, and then it will dial the second number.

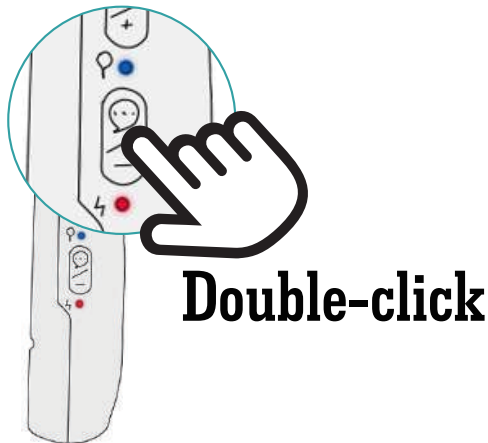


- To end the call, press the SOS button.



Silent mode button

- Double-click this button to **turn off voice warnings**, double-click the button again to **turn on voice warnings**.



Specification:

- Dimension: 61mm*44mm*16mm
- Weight: 40g
- Battery: Rechargeable, 3.7V, 800mAh
- Charging voltage: 5V DC
- Waterproof: IP67
- 4 locating technologies: GPS, BLE, WIFI, LBS

Cautions:

Please comply with the instructions to extend the unit life:

- Don't use & store the unit in dusty places.
- Don't put the unit in overheated or over cooled places.
- Clean the unit with a piece of dry cloth. Don't clean in chemicals, detergent.
- Don't disassemble or refit the unit.
- Using other batteries will cause unwanted situation.

www.eviewgps.com

FCC Warning

15.19 Labeling requirements.

This device complies with part 15 of the FCC Rules. Operation is subject to the following two conditions: (1) This device may not cause harmful interference, and (2) this device must accept any interference received, including interference that may cause undesired operation.

15.21 Information to user.

Any Changes or modifications not expressly approved by the party responsible for compliance could void the user's authority to operate the equipment.

15.105 Information to the user.

Note: This equipment has been tested and found to comply with the limits for a Class B digital device, pursuant to part 15 of the FCC Rules. These limits are designed to provide reasonable protection against harmful interference in a residential installation. This equipment generates uses and can radiate radio frequency energy and, if not installed and used in accordance with the instructions, may cause harmful interference to radio communications. However, there is no guarantee that interference will not occur in a particular installation. If this equipment does cause harmful interference to radio or television reception, which can be determined by turning the equipment off and on, the user is encouraged to try to correct the interference by one or more of the following measures:

- Reorient or relocate the receiving antenna.
- Increase the separation between the equipment and receiver.
- Connect the equipment into an outlet on a circuit different from that to which the receiver is connected.
- Consult the dealer or an experienced radio/TV technician for help.

FCC RF Radiation Exposure Statement:

- 1.This Transmitter must not be co-located or operating in conjunction with any other antenna or transmitter.
- 2.This equipment complies with RF radiation exposure limits set forth for an uncontrolled environment.

This equipment should be installed and operated with minimum distance 20cm between the radiator and your body.