



WARNING



Study, understand and follow all instructions provided with this product. Read these instructions carefully before installing, operating, servicing or repairing this tool. Keep these instructions in a safe, accessible place.

Caution: To help prevent personal injury,

- Never use this tool for any application other than for which it was designed.
- Never alter or modify this tool in any way. Improper operation and / or maintenance of the tool, or modification of the tool could result in serious injury or death.
- Always perform automotive testing in a safe environment.
- Do not attempt to operate or observe the tool while driving a vehicle. Operating or observing the tool will cause driver distraction and could cause a fatal accident.
- Wear safety eye protection that meets ANSI standards.
- Keep clothing, hair, hands, tools, test equipment, etc. away from all moving or hot engine parts.
- Operate the vehicle in a well-ventilated work area: Exhaust gases are poisonous.
- Put blocks in front of the drive wheels and never leave the vehicle unattended while running tests.
- Use extreme caution when working around the ignition coil, distributor cap, ignition wires and spark plugs. These components create hazardous voltages when the engine is running.
- Put the transmission in P (for A/T) or N (for M/T), and make sure the parking brake is engaged.
- Keep a fire extinguisher suitable for gasoline / chemical / electrical fires nearby.
- Don't connect or disconnect any test equipment while the ignition is on or the engine is running.
- Keep this tool dry, clean, free from oil / water or grease. Use a mild detergent on a clean cloth to clean the outside of the tool, when necessary.



WARNING



Study, understand and follow all instructions provided with this product. Read these instructions carefully before installing, operating, servicing or repairing this tool. Keep these instructions in a safe, accessible place.

Caution: To help prevent personal injury,

- Never use this tool for any application other than for which it was designed.
- Never alter or modify this tool in any way. Improper operation and / or maintenance of the tool, or modification of the tool could result in serious injury or death.
- Always perform automotive testing in a safe environment.
- Do not attempt to operate or observe the tool while driving a vehicle. Operating or observing the tool will cause driver distraction and could cause a fatal accident.
- Wear safety eye protection that meets ANSI standards.
- Keep clothing, hair, hands, tools, test equipment, etc. away from all moving or hot engine parts.
- Operate the vehicle in a well-ventilated work area: Exhaust gases are poisonous.
- Put blocks in front of the drive wheels and never leave the vehicle unattended while running tests.
- Use extreme caution when working around the ignition coil, distributor cap, ignition wires and spark plugs. These components create hazardous voltages when the engine is running.
- Put the transmission in P (for A/T) or N (for M/T), and make sure the parking brake is engaged.
- Keep a fire extinguisher suitable for gasoline / chemical / electrical fires nearby.
- Don't connect or disconnect any test equipment while the ignition is on or the engine is running.
- Keep this tool dry, clean, free from oil / water or grease. Use a mild detergent on a clean cloth to clean the outside of the tool, when necessary.

INTENDED USE OF THE TOOL

This tool is designed as a code reader for professional technicians or DIYers. Do not use this tool outside of the designed intent. Never modify the tool for any other purpose or use.

PRODUCT INFORMATION

- Slim design with 4 inch color screen and Android platform.
- Multilingual support and wireless update.
- Only work with the passenger cars with 12V voltage.



**Made in China
to Matco sepecifications**

FCC STATEMENT

Any Changes or modifications not expressly approved by the party responsible for compliance could void the user's authority to operate the equipment.

This device complies with part 15 of the FCC Rules. Operation is subject to the following two conditions: (1) This device may not cause harmful interference, and (2) this device must accept any interference received, including interference that may cause undesired operation.

Note: This equipment has been tested and found to comply with the limits for a Class B digital device, pursuant to Part 15 of the FCC Rules. These limits are designed to provide reasonable protection against harmful interference in a residential installation.

This equipment generates, uses, and can radiate radio frequency energy, and if not installed and used in accordance with the instructions, may cause harmful interference to radio communications. However, there is no guarantee that interference will not occur in a particular installation. If this equipment does cause harmful interference to radio or television reception, which can be determined by turning the equipment off and on, the user is encouraged to try to correct the interference by one or more of the following measures:

- Reorient or relocate the receiving antenna.
- Increase the separation between the equipment and receiver.
- Connect the equipment into an outlet on a circuit different from that to which the receiver is connected.
- Consult the dealer or an experienced radio /TV technician for help.

MDMAXCRPRO2 (FCC ID: 2AUKMMDMAXCRPRO2) has been evaluated to meet general RF exposure requirement.

Table of Contents

1. Introduction	1
1.1 Vehicle Coverage	1
1.2 On-Board Diagnostics (OBD) II	2
1.3 OBD II Definitions	2
1.4 Diagnostic Trouble Codes (DTCs)	4
1.5 Location of the Data Link Connector (DLC)	5
2. Product Descriptions	6
2.1 Components & Controls	6
2.2 Technical Specifications	7
2.3 Accessories Checklist	7
3. Initial Use	8
3.1 Powering Up The Tool	8
3.2 Getting Started	8
3.3 Job Menu	8
4. Diagnose	10
4.1 Connection	10
4.2 System Diagnosing	11
4.2.1 Smart Diagnosis (Auto-Detect)	11
4.2.2 Manual Diagnosis	12
4.3 OBD II Diagnosis	18
4.4 History	20
5. Reset (Special Functions)	21
6. Upgrade	22
7. MDMAXBATTEST	23
8. Settings	24
8.1 Units of measurement	24
8.2 Automatic detection on connect	24
8.3 Brightness	24
8.4 Sound	24
8.5 Network	24
8.6 Time Zone	24

8.7 Language	24
8.8 Workshop information	24
8.9 Recovery	24
8.10 Clean Up	25
8.11 Screen Capture	25
8.12 Data	25
8.12.1 Diagnostic Record	25
8.12.2 Diagnostic Report	25
8.12.3 DTC Library	25
8.12.4 DLC (Data Link Connector) Location	25
8.12.5 Feedback	25
8.12.6 Image	26
8.12.7 Firmware Fix	26
8.12.8 User Manual	26
8.13 About	26
9. FAQ	27

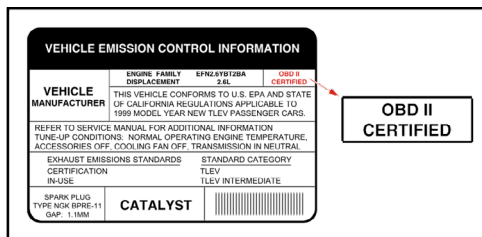
1. Introduction

1.1 Vehicle Coverage

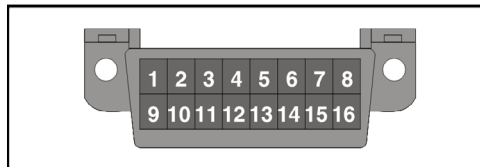
This diagnostic tool is specially designed to work with all OBD II compliant vehicles, including Controller Area Network (CAN). It is required by EPA that all 1996 and newer vehicles (cars and light trucks) sold in the United States must be OBD II compliant and this includes all American, Asian and European vehicles.

A small number of 1994 and 1995 model year gasoline vehicles are OBD II compliant. To verify if a 1994 or 1995 vehicle is OBD II compliant, check the following:

1. **Vehicle Emissions Control Information (VECI) Label.** It is located under the hood or by the radiator of most vehicles. If the vehicle is OBD II compliant, the label will designate **OBD II Certified**.



2. Government regulations mandate that all OBD II compliant vehicles **must** have a "common" 16-pin **Data Link Connector (DLC)**.



*Note: Some 1994 and 1995 vehicles have 16-pin connectors but are not OBD II compliant. Only those vehicles with a Vehicle Emissions Control Label stating OBD II Certified are OBD II compliant.

1.2 On-Board Diagnostics (OBD) II

The OBD II system is designed to monitor emission control systems and key engine components by performing either continuous or periodic tests of specific components and vehicle conditions, which will offer three pieces of such valuable information:

- Whether the Malfunction Indicator Light (MIL) is commanded “on” or “off”;
- Which, if any, Diagnostic Trouble Codes (DTCs) are stored;
- Readiness Monitor status.

1.3 OBD II Definitions

The following terms and their definitions are related to OBD II systems. Read and reference this list as needed to aid in the understanding of OBD II systems.

EOBD - European On-Board Diagnostics. Essentially the same as OBD II, with the same Data Link Connector and Communication Protocols.

Communication Protocols - Allows different systems and sensors in a vehicle to communicate. There are currently five protocols:

- CAN Bus
- J1850 VPW
- ISO 9141-2
- J1850 PWM
- ISO 14230 KWP

PCM - Powertrain Control Module. The PCM is the OBD II accepted term for the vehicle’s “on-board computer.” In addition to controlling the engine management and emissions systems, the PCM also participates in controlling the powertrain (transmission) operation. Most PCMs also have the ability to communicate with other computers on the vehicle (ABS, ride control, body, etc.).

DLC - Data Link Connector. The 16-cavity connector on the vehicle that allows communication between the computer system and the diagnostic tool.

MIL - Malfunction Indicator Light. The vehicle’s “Check Engine” warning light that activates when a DTC is stored.

DTC - Diagnostic Trouble Code. A code stored in the computer system’s memory, which helps to identify the fault condition that is causing the MIL to activate.

Freeze Frame Data - Operating conditions that are stored when a DTC is stored.

PID - Parameter Identification Data. Data returned by the vehicle’s control

modules to the diagnostic tool.

Monitors - Monitors are “diagnostic routines” programmed into the PCM. The PCM utilizes these programs to run diagnostic tests, and to monitor operation of the vehicle’s emissions-related components or systems to ensure they are operating correctly and within the vehicle’s manufacturer specifications.

Enabling Criteria - Also termed Enabling Conditions. They are the vehicle-specific events or conditions that must occur within the engine before the various monitors will set, or run. Some monitors require the vehicle to follow a prescribed “drive cycle” routine as part of the enabling criteria. Drive cycles vary among vehicles and for each monitor in any particular vehicle. Please refer to the vehicle’s factory service manual for specific enabling procedures.

Trip - A Trip for a particular Monitor requires that the vehicle is being driven in such a way that all the required “Enabling Criteria” for the Monitor to run and complete its diagnostic testing are met. The “Trip Drive Cycle” for a particular Monitor begins when the ignition key is turned “On.” It is successfully completed when all the “Enabling Criteria” for the Monitor to run and complete its diagnostic testing are met by the time the ignition key is turned “Off.” Since each of the fifteen monitors is designed to run diagnostics and testing on a different part of the engine or emissions system, the “Trip Drive Cycle” needed for each individual Monitor to run and complete varies.

Drive Cycle - A specific mode of vehicle operation that provides conditions required to set all the readiness monitors applicable to the vehicle to the “ready” condition. The purpose of completing an OBD II drive cycle is to force the vehicle to run its onboard diagnostics. Some form of a drive cycle needs to be performed after DTCs have been erased from the PCM’s memory or after the battery has been disconnected. Running through a vehicle’s complete drive cycle will “set” the readiness monitors so that future faults can be detected. Drive cycles vary depending on the vehicle and the monitor that needs to be reset. For vehicle specific drive cycle, consult the service manual.

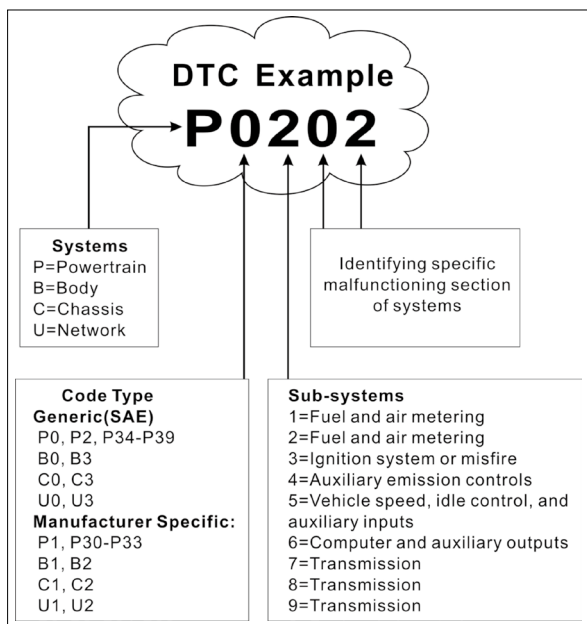
*Note: Do not confuse a “Trip” Drive Cycle with an OBD II Drive Cycle. A “Trip” Drive Cycle provides the “Enabling Criteria” for one specific Monitor to run and complete its diagnostic testing. An OBD II Drive Cycle must meet the “Enabling Criteria” for all Monitors on a particular vehicle to run and complete their diagnostic testing.

Warm-up Cycle - Vehicle operation after an engine off period where engine temperature rises at least 40°F (22°C) from its temperature before starting, and reaches at least 160°F (70°C). The PCM uses warm-up cycles as a counter to automatically erase a specific code and related data from its memory. When no faults related to the original problem are detected within a specified number of warm-up cycles, the code is erased automatically.

Fuel Trim (FT) - Feedback adjustments to the base fuel schedule. Short-term fuel trim refers to dynamic or instantaneous adjustments. Long-term fuel trim refers to much more gradual adjustments to the fuel calibration schedule than short-term trim adjustments. These long-term adjustments compensate for vehicle differences and gradual changes that occur over time.

1.4 Diagnostic Trouble Codes (DTCs)

OBD II Diagnostic Trouble Codes are codes that are stored by the on-board computer diagnostic system in response to a problem found in the vehicle. These codes identify a particular problem area and are intended to provide you with a guide as to where a fault might be occurring within a vehicle. OBD II Diagnostic Trouble Codes consist of a five-digit alphanumeric code. The first character, a letter, identifies which control system sets the code. The second character, a number, 0-3; other three characters, a hex character, 0-9 or A-F provide additional information on where the DTC originated and the operating conditions that caused it to set. Here below is an example to illustrate the structure of the digits:

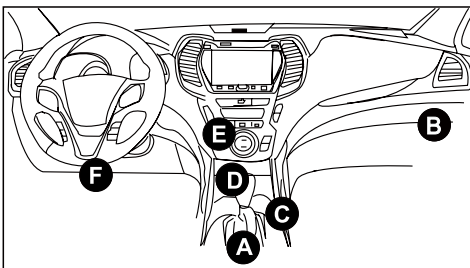


P0201 - Injector circuit malfunction, Cylinder 1

1.5 Location of the Data Link Connector (DLC)

The DLC (Data Link Connector or Diagnostic Link Connector) is typically a 16-pin connector where diagnostic code readers interface with the vehicle's on-board computer. It is usually located 12 inches from the center of the instrument panel, under or around the driver's side for most vehicles. For some vehicles with special designs, the DLC location may vary.

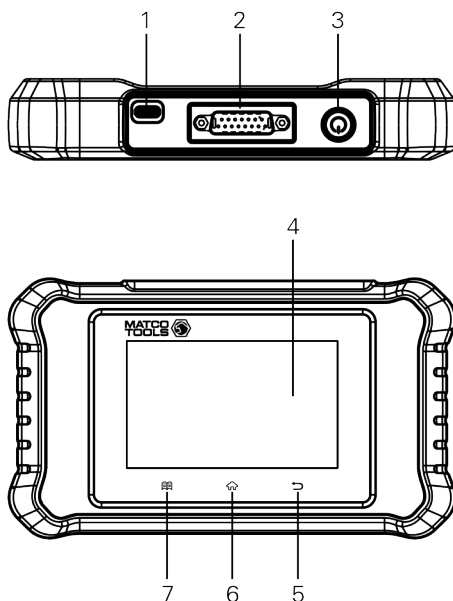
Refer to the following figure for possible DLC location.





If the DLC cannot be found, refer to the vehicle's service manual for the location.

2. Product Descriptions

2.1 Components & Controls



No.	Name	Descriptions
1	Charging port	Charge the tool via data cable (not included).
2	DB-15 diagnostic connector	Connect the diagnostic cable.
3	Power button	Turn on/off the tool.
4	Touch screen	Indicate the test results.
5	↩ BACK button	Exit the current program or return to the previous screen.

6	 HOME button	Navigate to the home (Job menu) screen.
7	 Settings button	Quick dial to the Settings module.

2.2 Technical Specifications

- Screen: 4" touch screen with a resolution of 480*800
- CPU: 4-core 1.5GHz processor
- RAM: 2GB
- ROM: 32GB
- OBD II input voltage range: 9~18V
- Power up via:
 - DC 5V data cable (not included) or
 - Diagnostic cable through connection to vehicle's DLC
- Working temperature: 0 to 45°C (32 to 113 F°)
- Storage temperature: -20 to 70°C (-4 to 158 F°)

2.3 Accessories Checklist

The following accessory items are for reference purpose only. For detailed items, please consult from the seller.

1. Diagnostic scanner
2. Diagnostic cable
3. Quick start guide

3. Initial Use

3.1 Powering Up The Tool

There are two methods available for powering up the tool:

Via Power Adapter (not included): Use the power adapter (DC5V, 2A is recommended) to connect the tool to an AC outlet.

Via Diagnostic Cable: Insert the diagnostic cable into the vehicle's DLC port.

When the tool is powered on, the screen will automatically light up.

3.2 Getting Started

If it is the first time you have used this tool, you need to make some system settings.

1. Press the [POWER] button to turn on the tool. The screen displays a welcome page. Tap "Start" to go to next step.
2. Choose the desired system language, and tap "Next step".
3. Choose the time zone of your current location. The system will automatically configure the time according to the time zone you selected.
4. The system will automatically searching for all available wireless networks. Choose the wireless network needed.
5. After the network connection is done, tap "Next step" to configure workshop information. Input the required information, and tap "Next step" to go to next step.

*Note: After you configured it, the system will append it on the report every time a report is successfully generated.

6. Carefully read all terms and conditions of the user agreement, check "Agree to all the above terms", and tap "OK" to complete the registration process. It will automatically jump to the Job Menu.

3.3 Job Menu

It mainly includes the following function modules.

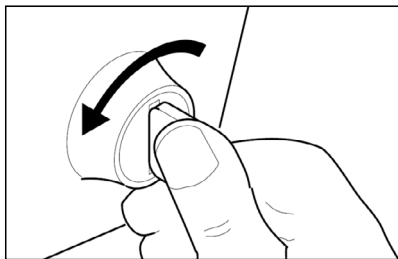
Diagnose	Configure the tool to operate as a professional diagnostic tool.
MDMAXBATTEST	This function allows you to perform battery health test, start system test and charging health test. It needs to work with the MAXBATTERY module (sold separately).

OBD II	This option presents a quick way to check for DTCs, isolate the cause of the illuminated Malfunction Indicator Lamp (MIL), check monitor status prior to emissions certification testing, verify repairs, and perform a number of other services that are emission-related.
Reset	Offer coding, reset, relearn and more service functions, to help vehicles get back to functional status after repair or replacement.
Upgrade	To update vehicle diagnostic software and APK. *Note: This function requires a stable network connection.
Settings	To manage data and make some system settings, including Network setup, Workshop information and Brightness etc.

4. Diagnose

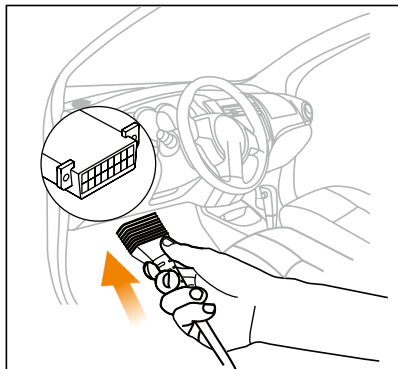
4.1 Connection

1). Turn the ignition off.



2). Locate the vehicle's 16-pin Data Link Connector (DLC). Refer to Chapter 1.5.

3). Plug one end of the diagnostic cable into the vehicle's DLC(Data Link Connector) port, and the other end to the DB-15 diagnostic connector of the tool, and then tighten the captive screws.



*Notes:

- A plastic DLC cover may be found for some vehicles and you need to remove it before plugging the diagnostic cable.
- The cable connector is keyed and will only fit one way. If you have problems connecting the cable connector to the DLC, rotate the connector 180° and try again.

4). Turn the ignition on. Engine can be off or running.

*Caution: Don't connect or disconnect any test equipment with ignition on or engine running.

4.2 System Diagnosing

This function is specially designed to diagnose the electronic control systems of single vehicle model.

Only the following 4 electronic control systems with basic diagnostic functions are supported:

- PCM (Powertrain Control Module)
- Transmission
- ABS (Anti-lock Braking System)
- SRS (Supplemental Restraint System)

*Note: All software is updated periodically. It is recommended to update and install the latest software version for the best service, functions and experience.

4.2.1 Smart Diagnosis (Auto-Detect)

This function allows you to quickly access the electronic control systems of the vehicle via decoding the VIN, without manual step-by-step menu selection.

After connection, turn the ignition key on and the system enters auto-detect mode.

*Notes:

- Make sure the "Automatic detection on connect" in "Settings" is set as ON.
 - A highly stable and solid network connection is recommended for successful VIN access.
- A. Once the system successfully obtains the VIN (Vehicle Identification Number) information of the currently identified vehicle, confirm the VIN information to scan vehicle systems until the diagnostic session is successfully completed.
- B. If the tool failed to access the VIN information, the following screen will appear:

Input VIN

✓

Skip

OK

0	1	2	3	4	5	6	7	8	9
W	E	R	T	Y	U	P			
A	S	D	F	G	H	J	K	L	
Z	X	C	V	B	N	M			✕

Input the VIN, and tap “OK,” the system will decode the VIN data automatically, and continue the Smart Diagnosis procedure if success. Otherwise the system will enter the Manual Diagnosis mode.

*Notes:

- The most recognizable location for this number is in the top left corner on the vehicle’s dashboard. Other locations include the driver’s door or post, and the firewall under the hood.
- In general, vehicle identification numbers are standardized - all contain 17 characters. VIN characters may be capital letters A through Z and numbers 1 through 0; however, the letters I, O and Q are never used in order to avoid mistakes of misreading. No signs or spaces are allowed in the VIN.

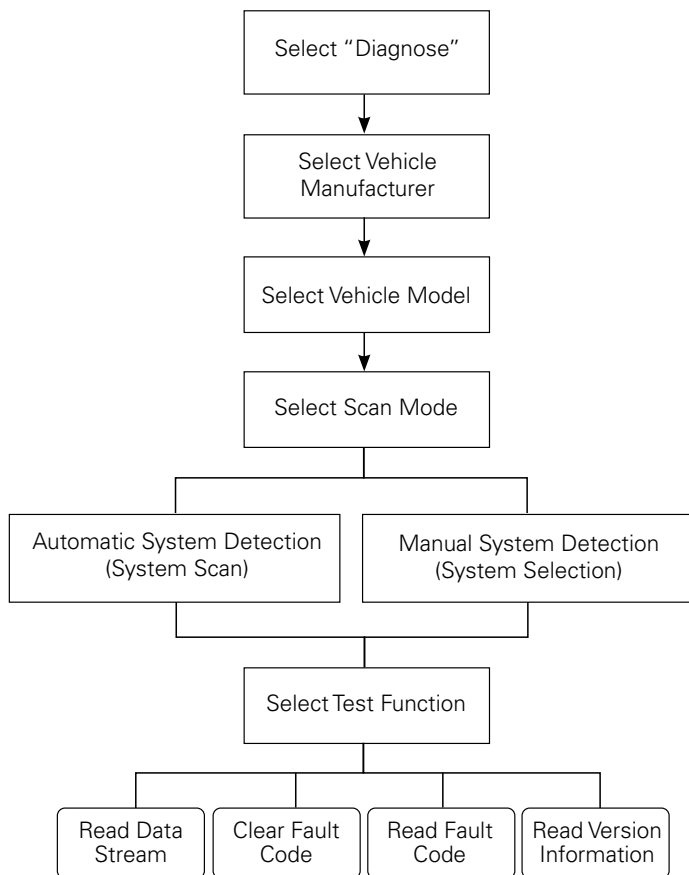
4.2.2 Manual Diagnosis

If the tool cannot obtain or analyze the VIN information, you can also perform Manual Diagnosis. In this mode, you need to execute the menu-driven command and then follow the on-screen instruction to proceed.

*Notes:

- Before diagnosing, please make sure the corresponding vehicle manufacturer software has been installed on the tool.
- The diagnostic menu may vary by the vehicle’s make, model and year.

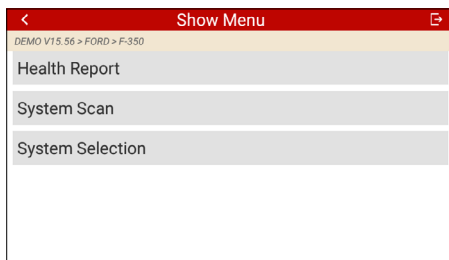
Refer to the flowchart illustrated as below to diagnose a vehicle manually:



Take DEMO V15.56 as an example to demonstrate how to diagnose a vehicle.

*Note: Illustrations used in this manual are samples, the actual testing screen may vary for each vehicle being tested.

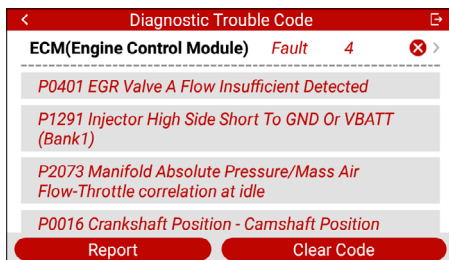
- 1). Select diagnostic software version: Tap "DEMO" to go to Step 2.
- 2). Select vehicle model (varies with different versions): Select the desired vehicle model.
- 3). Turn the ignition key to ON: Set the ignition switch to on.
- 4). Select test item: Select the desired test item to proceed.



4.2.2.1 Health Report (Quick Test)

This function varies from vehicle to vehicle. It enables you to quickly access all the electronic control units of the vehicle and generate a detailed report about vehicle health.

Tap “Health Report” on the test item selection screen, the system starts scanning the ECUs. Once the scanning is complete, the following screen will appear:



In above figure, the tested system with fault code is tagged with a red cross and the system with OK displays with a green tick.

On-Screen Buttons:

Report: Tap to save the diagnostic result as a report.

Clear Code: Tap to clear the existing diagnostic trouble codes.

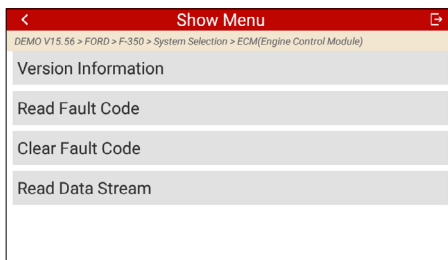
4.2.2.2 System Scan

This option allows you to quickly scan which systems are installed on the vehicle.

4.2.2.3 System Selection

This option allows you manually select the test system and function step by step.

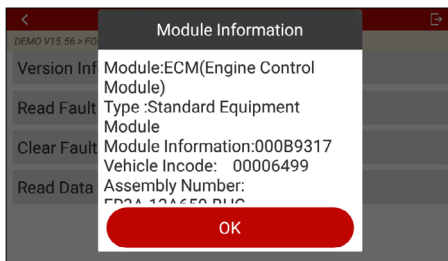
Tap “System Selection” on the test item selection screen, and tap the desired system (take “Engine” for example) to enter the test function selection screen.



*Note: Different vehicle has different diagnostic menus.

A. Version Information

This function displays the detailed information of DTC records retrieved from the vehicle’s control system. This function is used to read the version information of system module.



B. Read Fault Code

This function displays the detailed information of DTC records retrieved from the vehicle’s control system.

Tap “Read Fault Code” on the test function selection screen, the screen will display the diagnostic result.

*Note: Retrieving and using DTCs for troubleshooting vehicle operation is only one part of an overall diagnostic strategy. Never replace a part based only on the DTC definition. Each DTC has a set of testing procedures, instructions and

flow charts that must be followed to confirm the location of the problem. This information can be found in the vehicle's service manual.

On-Screen Buttons:

Help: Tap to view the help information.

Code Search: Tap it to search for more information about the current DTC online.

Report: To save the current data in text format. All diagnostic reports can be accessed from **Settings -> Data -> Diagnostic Report**.

C. Clear Fault Code

After reading the retrieved codes from the vehicle and certain repairs have been carried out, you can use this function to erase the codes from the vehicle. Before performing this function, please be sure the vehicle's ignition key is in the ON position with the engine off.

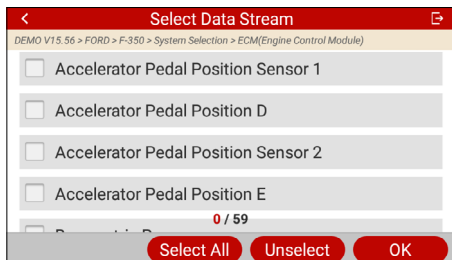
*Notes:

1. If you plan to take the vehicle to a Service Center for repair, DO NOT erase the codes from the vehicle's computer. If data is erased, valuable information that might help the technician troubleshoot the problem will also be erased.
2. Clearing DTCs does not fix the problem(s) that caused the code(s) to be set. If proper repairs to correct the problem that caused the code(s) to be set are not made, the code(s) will appear again and the check engine light will illuminate as soon as the problem that cause the DTC to set manifests itself.

D. Read Data Stream

This option retrieves and displays live data and parameters from the vehicle's ECU.

Tap "Read Data Stream" on the test function selection screen, the system will display data stream items.



On-Screen Buttons:

Select All: Tap it to select all items of the current page. To select certain data

stream item, just check the box before the item name.

Unselect: Tap it to deselect all data stream items.

OK: Tap it to confirm and jump to the next step.

After selecting the desired items, tap “OK” to enter the data stream reading page.

Data Stream		
DEMO V15.56 > FORD > F-350 > System Selection > ECM(Engine Control Module)		
Name	Value	
Accelerator Pedal Position Sensor 1	0.78 V	
Accelerator Pedal Position D	15.29 %	
Accelerator Pedal Position Sensor 2	0.39 V	
<div>Combine Report Record</div>		

*Notes:

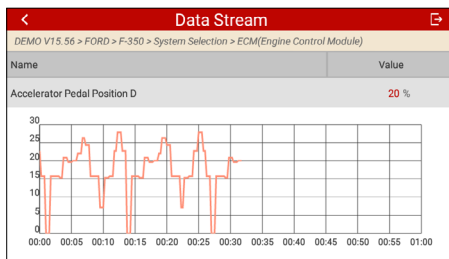
1. If the value of the data stream item is out of the range of the standard (reference) value, the whole line will display in red. If it complies with the reference value, it displays in blue (normal mode).
2. The indicator 1/X shown on the bottom of the screen stands for the current page / total page number. Swipe the screen from the right / left to advance / return to the next / previous page.

There are 3 types of display modes available for data viewing, allowing you to view various types of parameters in the most suitable way.

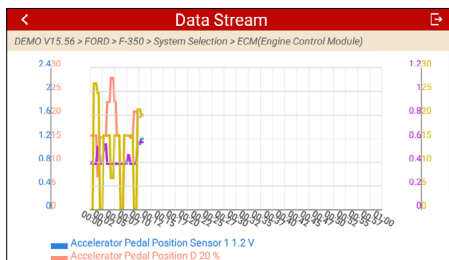
- Value – Displays the parameters with numbers and lists.
- Graph – Displays the parameters with wave patterns.
- Combine – The graphs can be merged for easier comparisons. In this case, different items are marked in different colors.

On-Screen Buttons:

: Tap it to view the waveform graph of the current data stream item.



Combine: Tap it, a pull-down list of the data stream items appears on the screen. Select the necessary items (Max. 4 items can be selected at the same time) and the screen will display the waveforms corresponding to these items immediately.



Report: Tap to save the current data as a diagnostic report. All diagnostic reports can be accessed from **Settings -> Data -> Diagnostic Report**. The tool logs the Date of Report (the date and time at which the report was created) and assigns a unique Report #.

Record: Tap to record and save Live Data. Recorded Live Data can serve as valuable information to help you in troubleshooting and diagnosing vehicle problems. All diagnostic records can be access from **Settings -> Data -> Diagnostic Record**.

4.3 OBD II Diagnosis

This function presents a quick way to check for DTCs, isolate the cause of the illuminated Malfunction Indicator Lamp (MIL), check monitor status prior to emissions certification testing, verify repairs, and perform a number of other services that are emission-related.

After the tool is properly connected to the vehicle's DLC, tap "OBD II" in the Job Menu. The tool will automatically start a check of the vehicle's computer to

determine which type of communication protocol it is using, then display the Monitor Status.

Tap "OK", the following function list appears.

1. Read I/M Readiness

This function checks whether or not the various emissions-related systems on the vehicle are operating properly, and are ready for Inspection and Maintenance testing.

It can also be used to check the Monitor Run Status, and to confirm if the repair of a car fault has been performed correctly.

2. Read Live Data

This function retrieves and displays live data and parameters from the vehicle's ECU.

3. Read Freeze Frame

This function takes the snapshot of the operating conditions when an emission-related fault occurs.

4. Read Fault Code

This function can identify which section of the emission control system has malfunctioned.

5. Clear Fault Code

This function erases the codes from the vehicle, after retrieving codes from the vehicle and certain repairs have been carried out.

Make sure the vehicle's ignition key is in the ON position with the engine off before the operation.

6. Test Results: On-Board Monitoring Test

This function retrieves test results for emission-related powertrain components and systems that are not continuously monitored. The test's availability is determined by the vehicle manufacturer.

7. Control Operation of On-Board Component/System

This option is used to access vehicle-specific subsystem and component tests. Available tests vary by vehicle manufacturer, year, and model.

8. Read Vehicle Information

This function retrieves a list of information (provided by the vehicle manufacturer) from the vehicle's on-board computer.

This information may include: VIN (Vehicle Identification Number), CID

(Calibration ID) and CVN (Calibration Verification Number).

9. EU OBFCM

This function displays a list of vehicle information provided by the vehicle manufacturer, which is in compliance with CO2 emission performance standards for new passenger cars and for new light commercial vehicles (Regulation EU 2019/613).

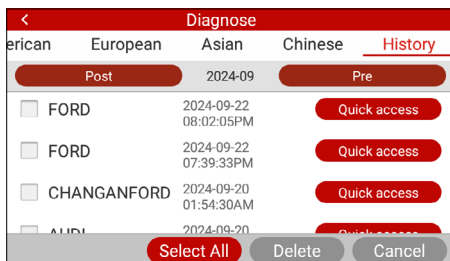
This information may include: Vehicle Identification Number, Total Fuel Consumed (Lifetime) and Total Distance Traveled (Lifetime) etc.

4.4 History

Generally once a vehicle diagnosis is performed, the tool will record the every details of diagnostic session.

The History function provides direct access to the previously tested vehicles and users can resume from the last operation, without starting from scratch.

Tap "History" on the Diagnose main menu screen, all diagnostic records will be listed on the screen in date sequence.



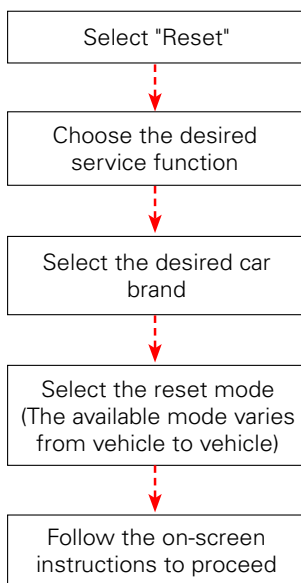
5. Reset (Special Functions)

It offers reset, relearn and more service functions, to help vehicles get back to functional status after repair or replacement.

Due to continuing improvements, available service functions are subject to change without prior written notice. To enjoy more service functions, you are suggested to check for updates on a regular basis.

There are two methods available to perform the reset procedures: Manual Reset or Auto Reset. Auto Reset follows the principle of sending command from the tool to vehicle's ECU to do resetting. While using Manual Reset, users just follow the on-screen instructions to select appropriate execution options, enter correct data or values, and perform necessary actions, the system will guide you through the complete performance for various service operations.

Follow the flowchart shown as below to perform resetting.

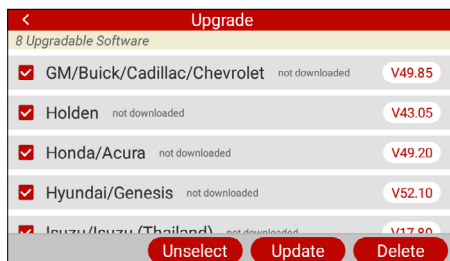


6. Upgrade

This function allows you to update the diagnostic app and software. All software is updated periodically. It is recommended to update and install the latest software version for the best service, functions and experience. Use and update of the pre-installed diagnostic/reset software is free of charge forever.

*Note: Make sure the network connection is strong and stable while updating.

Tap "Upgrade" on the Job menu to enter the update center.



By default, all diagnostic software is selected.

To deselect certain software, tap "Unselect", and then check the box next to vehicle model.

Tap "Update" to start downloading. It may take several minutes to finish, please be patient.

Once download is finished, the software packages will be installed automatically.

7. MDMAXBATTEST

This MDMAXBATTEST works as a professional Bluetooth battery tester. Through this function, users can perform battery health test, start system test and charging health test.

It needs to work with the MAXBATTERY (sold separately) module.

For more detailed operations, please refer to the User Manual included with the module.

8. Settings

8.1 Units of measurement

This option can set the measurement unit. Metric System and English System are available.

8.2 Automatic detection on connect

This option enables you to determine whether to start an automatic VIN detection once the tool is properly connected to the vehicle's DLC.

8.3 Brightness

This item allows you to set the standby time and screen brightness.

*Note: Reducing the brightness of the screen is helpful to conserve the power of the tool.

8.4 Sound

This option lets you adjust the volume and other sound settings.

8.5 Network

The built-in WLAN module allows you to register the tool, update diagnostic software & APK, and send email on a wireless network.

8.6 Time Zone

This option allows you to set the time zone.

8.7 Language

The tool supports multiple languages. You can use this option to change the target language.

8.8 Workshop information

This option allows you to add a personalized tag on the diagnostic reports.

*Note: After you configured it, the system will append it on the report every time a report is successfully generated.

8.9 Recovery

Use this item to reset this tool to the default factory setting.

*Warning: Resetting may cause data loss. Before doing so, please be careful to perform this operation.

8.10 Clean Up

This option allows user to clear some cache files and free up the storage space.

8.11 Screen Capture

This option allows you to set the Screen Capture icon to be shown or not on the screen.

8.12 Data

8.12.1 Diagnostic Record

This option stores the running parameters or waveform graphs the user records.

8.12.2 Diagnostic Report

This option stores all diagnostic reports generated in the process of vehicle diagnosis.

8.12.3 DTC Library

This option allows you to get the details of the DTC, which will greatly help simplify the diagnostic process.

The screenshot shows a screen titled "DTC Library" with a back arrow on the left and a help icon (?) on the right. Below the title, it says "Please select DTC". There is a table with 5 columns and 3 rows of data. The first row contains the letters U, 4, F, F, F. The second row contains P, 0, 0, 0, 0. The third row contains C, 1, 1, 1, 1. Below the table is a large red button labeled "OK". At the bottom right, there is a "History" button.

U	4	F	F	F
P	0	0	0	0
C	1	1	1	1

OK

History

8.12.4 DLC (Data Link Connector) Location

This option helps you to find the location of the vehicle's DLC.

8.12.5 Feedback

This option allows you to send the feedback of your diagnostic problems to us for further analysis and troubleshooting.

8.12.6 Image

This option allows you to view and manage all screenshots. All screenshots created in the vehicle diagnostic work will be saved in this module.

8.12.7 Firmware Fix

Use this option to upgrade and fix diagnostic firmware. During fixing, please do not cut power or switch to other interfaces.

8.12.8 User Manual

The user manual is integrated on the tool for your easier check and reference.

8.13 About

This option displays the hardware configuration information of the tool and license agreement.

9. FAQ

Here we list some frequently asked questions and answers related to this tool.

1. System halts when reading data stream. What is the reason?

It may be caused by a slackened connector. Please turn this tool off, firmly connect the connector, and switch it on again.

2. Screen of the tool flashes at engine ignition start. What is the reason?

Caused by electromagnetic disturbing, and this is normal phenomenon.

3. There is no response when communicating with on-board computer. What is the reason?

Please confirm the proper voltage of power supply and check if the throttle has been closed, the transmission is in the neutral position, and the water is in proper temperature.

4. What to do if the system fails to start auto VIN detection?

Please check the following possible reasons:

- Whether the tool is properly connected to the vehicle's DLC port.
- Whether the "Automatic detection on Connect" switch is OFF. If yes, slide it to ON.

5. Why are there so many fault codes?

Usually, it's caused by poor connection or fault circuit grounding.

6. How to upgrade the system?

1. Switch the tool on and ensure a stable internet connection.
2. Tap "Settings" on the Job Menu, select "About" -> "Version", and tap "Detect the System Version" to enter the system upgrading page.
3. Follow the on-screen instructions step by step to finish the process. It may take several minutes depending on the internet speed, please be patient. After upgrade is successfully finished, the tool will automatically restart and enters the Job menu.

Customer Service

If you have any questions on the operation of the unit, please contact Matco customer service number: 877-853-3738

Specific absorption rate (SAR):

This device meets the government's requirements for exposure to radio waves. The guidelines are based on standards developed by independent scientific organizations through periodic and thorough evaluation of scientific studies. The standards include a margin of safety designed to ensure the safety of all people regardless of their age or health.

The FCC Statement of Exposure to RF and the SAR limit for the United States (FCC) is 1.6 W/kg average for each gram of tissue. This device was tested for typical operations of use on the body, with the back of the device at 0mm from the body. To maintain compliance with FCC RF exposure requirements, use accessories that maintain a distance of 0mm between the user's body and the back of the device. The use of belt clips, covers and similar accessories must not contain metallic components in their assembly. The use of accessories that do not meet these requirements may not meet FCC RF exposure requirements and should be avoided.

Functioning in the body

This device was tested for typical operations of use in the body. To comply with RF exposure requirements, a minimum separation distance of 0mm must be maintained between the user's body and the telephone, including the antenna. Third-party accessories such as belt clips, covers and similar accessories used with this device should not contain metallic components, accessories that do not meet these RF exposure requirements and should be avoided from use on the body. Use only the supplied antenna or an approved antenna.

Statement:

We reserve the rights to make any change to product designs and specifications without notice. The actual object may differ a little from the descriptions in the manual in physical appearance, color and configuration. We have tried our best to make the descriptions and illustrations in the manual as accurate as possible, and defects are inevitable, if you have any question, please contact local dealer or after-sale service center, we shall not bear any responsibility arising from misunderstandings.