

IMPORTANT: Please must read this manual before use !!!

BOX CONTENTS:

- a) BOTTLE SCREEN
- b) 5V1A charger
- c) USB C Cable adaptor (only used with given charger)

USING :

Suitable for bottles:

- VSOP 70cl and 75cl
- VS 70cl and 75cl

CLEANING ADVICES:

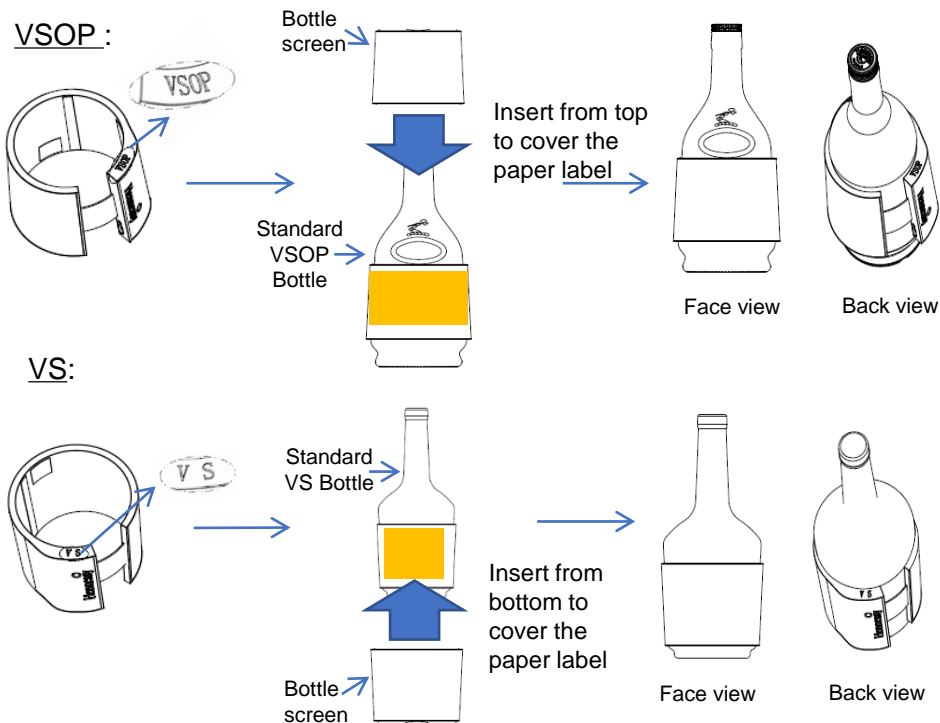
1. Clean the BOTTLE SCREEN with a soft cloth
2. Do not use any detergent

SAFETY INTRUCTIONS:

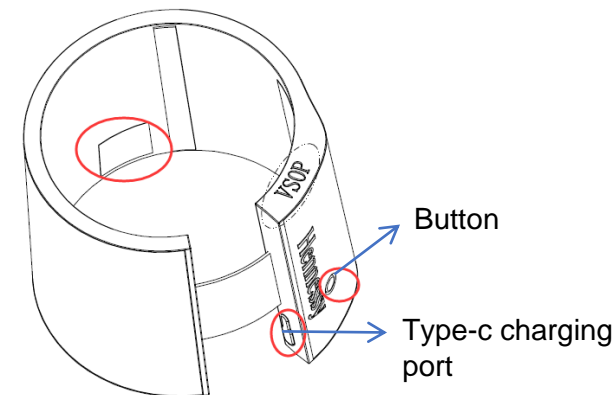
1. Always use a soft cloth for cleaning to avoid scratches.
2. Keep away from fire or heat.
3. Do NOT use outdoor.
4. Plug the silicon waterproof cover on top of charging hole before plugged in water

INSTALL BOTTLE SCREEN :

How to assemble BOTTLE SCREEN on the bottle



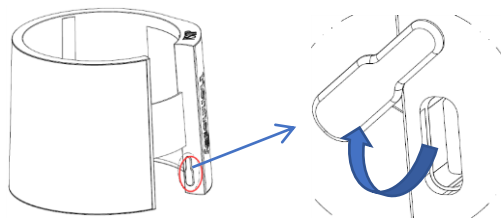
Operating “BOTTLE SCREEN” without Smartphone:



1. Scan QR Code with Smartphone; in order to download the APP
2. Long press the Button for ON / OFF
3. Single Press the Button for switching videos
4. Double press the Button to 180° rotate the video

CHARGE:

Lift the waterproof cap and charge with the charger of Type -C connector



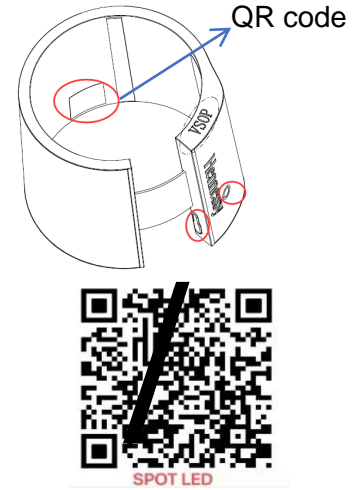
When charging, the battery charging sign appears on the screen, and the full grid is displayed when fully charged.



Use “BOTTLE SCREEN” with Smartphone:

Download and install mobile apps by scanning the QR code on unit or in this manual

- (APP:) Turn on the Bluetooth on your mobile phone.
- (APP:) Launch the app on the phone.
- (APP:) Select the language and fill in the information (1)
- (APP:) Select the “**BOTTLE SCREEN**” in the page called “**Select your Device**” (2)
- (Device:) Turn on the physical “**BOTTLE SCREEN**”, and 4 digits ID will be appeared on the screen. E.g. **AF81**
- (APP:) Click on the Bluetooth icon on the Top-Right Corner ” in the page called “**Content Sleeve**”
- (APP:) Click the device ID to connect; which the 4 digits ID as shown on the device.
- (APP:) Follow the instruction on the APP for below operations:
 - Uploading “PREDEFINED BRAND CONTENT” to screen
 - Uploading “PREDEFINED BASIC MESSAGE” to screen
 - Uploading “CUSTOMIZED MESSAGE” to screen



(1)

A screenshot of the HENNESSY BOTTLE SCREEN APP! welcome screen. It features the Hennessy logo and the text 'Welcome to HENNESSY BOTTLE SCREEN APP! To access, please enter the following information.' Below this, there are two input fields: 'COUNTRY/REGION' with a 'Please select' dropdown and 'DATE OF BIRTH' with a 'MM/DD/YY' date picker. A blue arrow points to the right.

(2)

A screenshot of the 'Select your Device' screen. It features the Hennessy logo and the text 'Select your Device'. Below the logo, the text 'BOTTLE SCREEN' is circled in red. A blue arrow points to the right.

(3)

A screenshot of the 'Content Sleeve' screen. It features the Hennessy logo and the text 'Content Sleeve'. In the top right corner, there is a Bluetooth icon circled in red. At the bottom, the text 'PREDEFINED BRAND CONTENT' is visible. A blue arrow points to the right.

(4)

A screenshot of the 'Connect to Device' screen. It features the Hennessy logo and the text 'Connect to Device'. Below the logo, the text 'AF81' is circled in red. A blue arrow points to the right.

Warning

- 1.The light source of this item is not replaceable; when the light source reaches the end of its life, the entire item must be replaced. In normal use, the battery life can reach 500 charges.
- 2.Check the good condition of the adaptor before using it.
3. Do NOT expose batteries to heat or fire. Avoid storage in direct sunlight.
- 4.Do NOT short-circuit the battery.
5. Do NOT let a battery on extended charge if it is not used.
6. After long storage, it might be necessary to charge and discharge the batteries several times to obtain maximum performance.

IMPORTANT SAFETY INSTRUCTIONS

When using an electrical furnishing, basic precautions should always be followed, including the following:

Read all instructions before using (this furnishing).

1. Always unplug this furnishing from the electrical outlet before cleaning.

WARNING – To reduce the risk of burns, fire, electric shock, or injury to persons:

2. Unplug from outlet before putting on or taking off parts.
 3. Close supervision is necessary when this furnishing is used by, or near children, invalids, or disabled persons.
 4. Use this furnishing only for its intended use as described in these instructions. Do not use attachments not recommended by the manufacturer.
 5. Never operate this furnishing if it has a damaged cord or plug, if it is not working properly, if it has been dropped or damaged, or dropped into water.
- Return the furnishing to a service center for examination and repair.
6. Keep the cord away from heated surfaces.
 7. Never operate the furnishing with the air openings blocked. Keep the air openings free of lint, hair, and the like.
 8. Never drop or insert any object into any opening.
 9. Do not use outdoors.
 10. Do not operate where aerosol (spray) products are being used or where oxygen is being administered
 11. To disconnect, turn all controls to the off position, then remove plug from outlet.

SAVE THESE INSTRUCTIONS

This device complies with part 15 of the FCC Rules. Operation is subject to the following two conditions:

(1) This device may not cause harmful interference, and (2) this device must accept any interference received, including interference that may cause undesired operation.

Please note that changes or modifications of this product is not expressly approved by the party responsible for compliance could void the user's authority to operate the equipment.

NOTE: This equipment has been tested and found to comply with the limits for a Class B digital device, pursuant to Part 15 of the FCC Rules. These limits are designed to provide reasonable protection against harmful interference in a residential installation. This equipment generates, uses and can radiate radio frequency energy and, if not installed and used in accordance with the instructions, may cause harmful interference to radio communications. However, there is no guarantee that interference will not occur in a particular installation. If this equipment does cause harmful interference to radio or television reception, which can be determined by turning the equipment off and on, the user is encouraged to try to correct the interference by one or more of the following measures:

- Reorient or relocate the receiving antenna.
- Increase the separation between the equipment and receiver.
- Connect the equipment into an outlet on a circuit different from that to which the receiver is connected.
- Consult the dealer or an experienced radio/TV technician for help.



This symbol, affixed to the product or its packaging, indicates that this product should not be treated with household waste. It must be handed over to an appropriate collection point for the recycling of end of life batteries, and electrical and electronic equipment.

By ensuring that this product is disposed of appropriately, you will help prevent potential negative consequences for the environment and human health. Recycling materials will help conserve natural resources.

Class 3 device

HY- VS/VSOP BOTTLE SCREEN
MODEL: 2055587
LED Power: 4 W
Input: 5V ---, 1A
Production Code: WWYY
FCC ID :2AUFF2055587



MADE IN CHINA

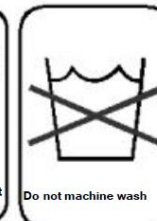
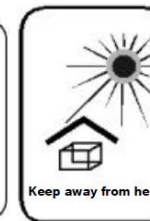
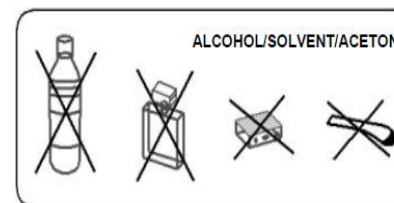
This device complies with part 15 of the FCC Rules. Operation is subject to the following two conditions: (1) this device may not cause harmful interference, and (2) this device must accept any interference received, including interference that may cause undesired operation.

(For commercial and household use)

Produced by : Meiyume (Hong Kong) Limited.

2/F, HK Spinners Industrial Building, Phase I&II 800 Cheung Sha Wan Road
Kowloon, Hong Kong.

For Jas HENNESSY & CO – Rue de la Richonne - 16100 Cognac ,France



Produced by: Meiyume (Hong Kong) Limited.-- 2/F, HK Spinners Industrial Building, Phase I&II 800 Cheung Sha Wan Road Kowloon, Hong Kong.
For Jas HENNESSY & CO
Rue de la Richonne - 16100 Cognac – France

Made in China