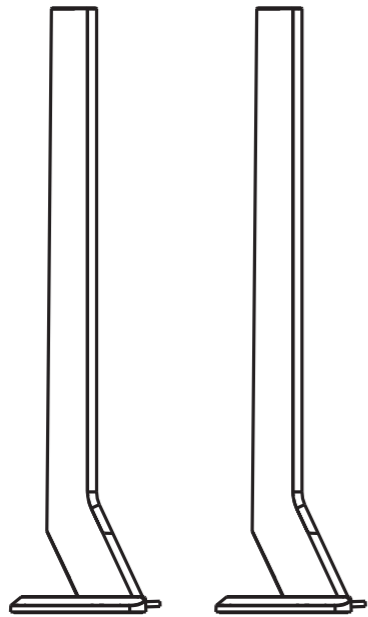


装订方式：风琴折
纸张：80g书写纸
印刷方式：四色印刷
尺寸：400mm*148mm



USER MANUAL
Smart Gaming Light Bars

Product Features

- Desktop Dial Control
- Memory
- Digital Color
- APP Control
- Music Sync
- 16 Million Colors

Product Parameters

Model No.	Color	Input voltage	Current
FWW2A1-17	Digital color	DC 5V	Max.1A
FWW2A1-27	Digital color	DC 12V	Max.1A

Package include

- Lamp Body×2
- User manual×1
- Remote control×1
- Adapter×1
(For use with FWW2A1-27)

Download APP

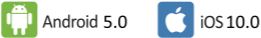
1: Search the APP-“SMART LIFE”from Apple store or Google Play.



2: Scan the QR code from the label or user manual.

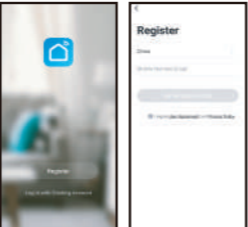


Android supports at least 5.0 system, iOS supports at least 10.0 system
(App versions below 3.20 are iOS ≥ 9.0. Only suitable for mobile phones,
not for tablets and other devices), Bluetooth devices ≥ V5.0.



Log in/Register an account

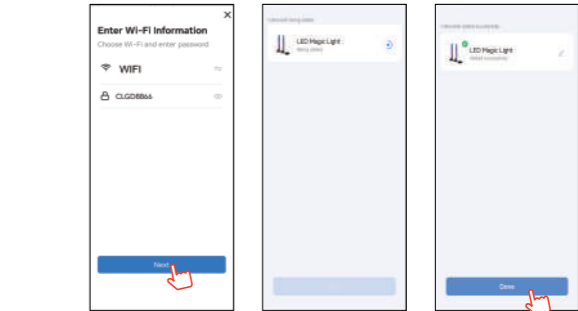
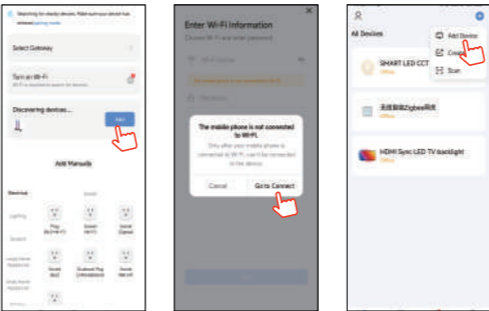
Open the APP - “Smart Life”, sign up for a new account or log in with an existing account.



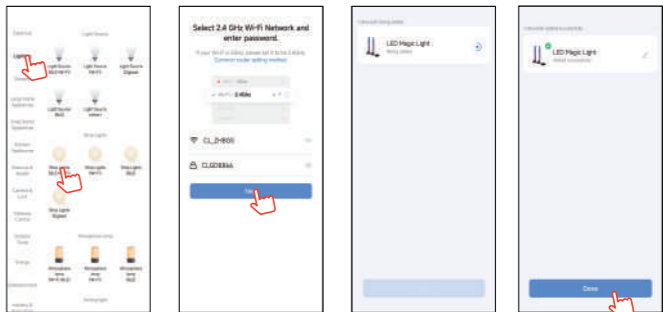
APP connection

- Preparation jobs: Power on the LED Ambient Lamp and enter the home of APP, please make sure your mobile and the smart kits are connected to the same WIFI.
- Connect the LED ambient lamp:

Solution 1) : After powering on the LED Ambient Lamp, turn on and off 3 times (or long press the switch button for over 5 seconds), the strip will go into a status of quick flashing. Find the “+”(in the corresponding room of the APP) to add devices. If your mobile have already turned on bluetooth before connecting the LED Ambient Lamp, then no need to turn on bluetooth again, the APP will connect to the LED Ambient Lamp automatically. If your mobile didn't turn on bluetooth before connecting the LED Ambient Lamp, the APP will pop up an interface with tips to ask you to turn on bluetooth. Then please choose “Allow”, then the bluetooth function of your mobile will be turned on. After that, the APP will pop up tips with info of the LED Ambient Lamp, then choose “Go to add”. Will go into an interface of bluetooth device,choose he “+” and go into next interface(Enter Wi-Fi password). Input the of password of the WIFI and choose “Confirm”, then it will go into status “Connecting.....”, you will need to await for your mobile to pairing with the controller at this step. Choose “Done” when it shows “Added successfully”, then go into operation modes. (If solution 1 is not suitable with your devices, please refer to solution 2)



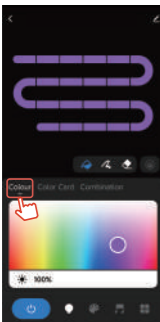
Solution 2) : After powering on the LED Ambient Lamp, turn on and off 3 times (or long press the switch button for over 5 seconds), the strip will go into a status of quick flashing. Find the “+”(in the corresponding room of the APP) into interface of “Add manually”. Then choose “lighting” to choose the correct smart devices and go into interface of “Select 2.4 GHz Wi-Fi Network and enter password”.Enter the Wi-Fi password, then choose “Next” and waiting until pairing success(make sure your mobile and the smart devices are in the same Wi-Fi networks). Then go into the interface of “Scanning devices”, after scanning success and choose “Next”, it will pop up interface of “add successfully” and choose “Done” to go into the operation modes.



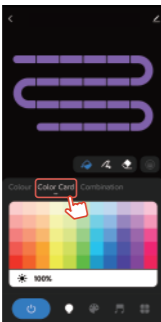
3.When connecting with the power supply, the led strip not flash. Please press the function button for over 5 seconds, then the light flash, enter into the APP and choose to add all the device in the corresponding room in the APP. Enter into the interface of adding lighting device and match the LED strip.

UI Introduction

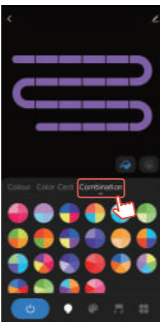
The basic adjustment interfaces : color light, color card, combination
Color temperature and color adjustments on the UI panel



Color light: 16 million colors change at will

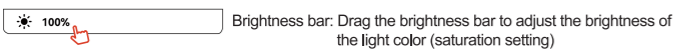
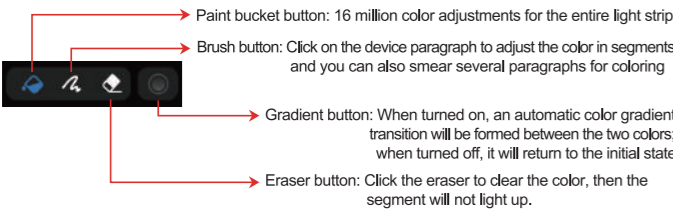


Color card: 55 specified color card options

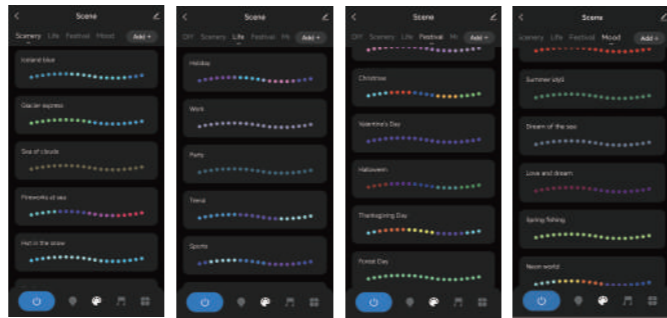


Combinations: Dozens of preset color combinations

Smear toning: Fill the whole section with a paint bucket through the interactive method of painting, and then you can change the color of the painting through the color pen, and use the eraser to extinguish it independently.

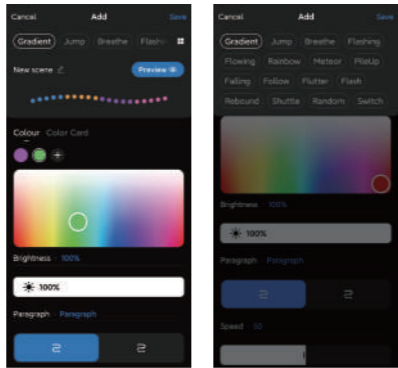


Symphony APP function scheduled scenarios : scenery, life, festivals, mood
Dozens of preset static or dynamic scenes in four scene modes to meet the needs of different situations and occasions



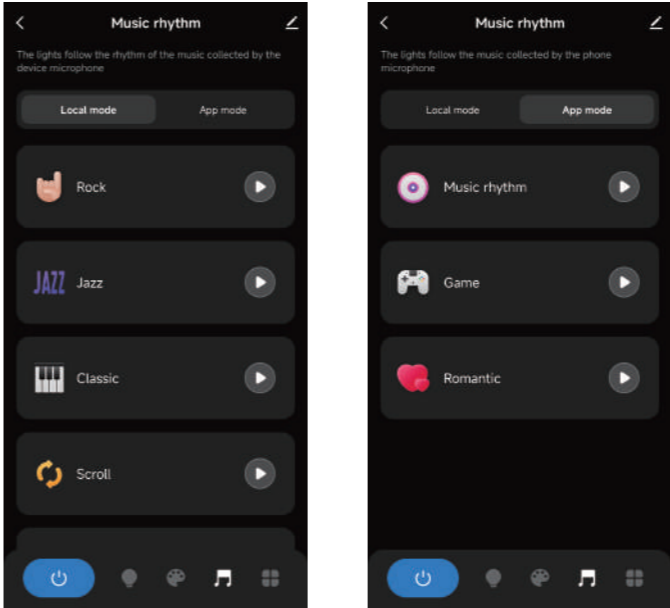
DIY Scene Mode

Customize the scene with a combination of motion and color.



Musical Rhythm

The color and brightness of the lights will jump with the rhythm and volume of the music



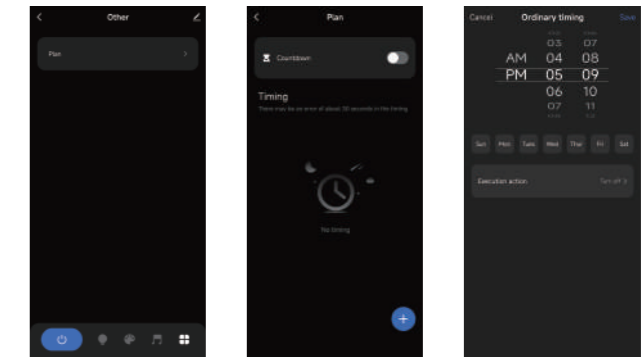
Adjustable rhythm sensitivity in local mode

※ APP interface, please refer to the latest updated version

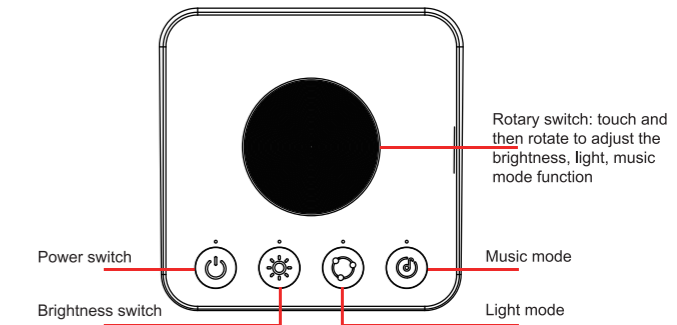
Third party control

The intelligent voice service supports Amazon Alexa, Google Assistant, Baidu Xiaodu, Xiaomi Xiaoi, etc.

Countdown to turn off the lights.



Desktop Dial Control



Remarks:
Power supply: AAA battery*2. Control distance: under open condition ≧5 meters.

FCC Statement

This equipment has been tested and found to comply with the limits for a Class B digital device, pursuant to part 15 of the FCC Rules. These limits are designed to provide reasonable protection against harmful interference in a residential installation. This equipment generates, uses and can radiate radio frequency energy and, if not installed and used in accordance with the instructions, may cause harmful interference to radio communications. However, there is no guarantee that interference will not occur in a particular installation. If this equipment does cause harmful interference to radio or television reception, which can be determined by turning the equipment off and on, the user is encouraged to try to correct the interference by one or more of the following measures:

- Reorient or relocate the receiving antenna.
- Increase the separation between the equipment and receiver.
- Connect the equipment into an outlet on a circuit different from that to which the receiver is connected.
- Consult the dealer or an experienced radio/TV technician for help.

Caution: Any changes or modifications to this device not explicitly approved by manufacturer could void your authority to operate this equipment.

This device complies with part 15 of the FCC Rules. Operation is subject to the following two conditions: (1) This device may not cause harmful interference, and (2) this device must accept any interference received, including interference that may cause undesired operation.

RF Exposure Information

This equipment complies with FCC radiation exposure limits set forth for an uncontrolled environment. This equipment should be installed and operated with minimum distance 20cm between the radiator and your body.