

A9 2.4GHz-Tx/Rx
Operating Instruction



A9 2.4GH Guitar Wireless System

User' s Manual

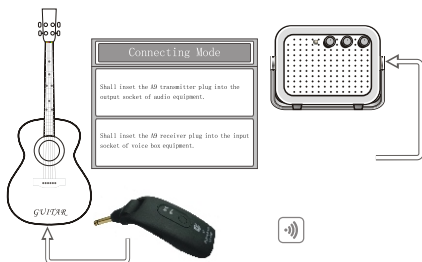


1 Power switch	Power switches of transmitter and receiver
2 Channel selection and matched switch	-Channel pairs: same time long press TX 2 /RX 2 button ,start to pair. ,RX and RX led long light will start working
3 Indicator light of transmitter	-At boot, the indicator light will flashes , - be paired long light Low batty will slowly blink
4 Indicator light of receiver	- At boot, the indicator light will flashes , - be paired long light Low batty will slowly flash

Functions

5 Indicator light of power	-In charging, the red light flashes, said it charging. When it is full of power, the green light off,
6 Signal input plug	Used for connecting electroacoustic instruments such as guitar.
7 Signal output plug	Used for connecting the sound processing equipment such as voice box and patch cord.
8 USB	USB for charging

Sketch of connecting with voice box

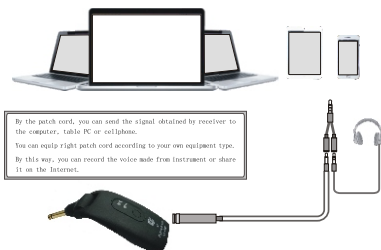


Connecting Mode

Shall inset the A9 transmitter plug into the output socket of audio equipment.

Shall inset the A9 receiver plug into the input socket of voice box equipment.

Sketch of recording connection



By the patch cord, you can send the signal obtained by receiver to the computer, table PC or cellphone.

You can equip right patch cord according to your own equipment type.

By this way, you can record the voice made from instrument or share it on the Internet.

Charging



电脑、充电宝或手机充电器



Computer, Charge pal or mobile phone Charger.

Specification

1	Frequency range: 2.400GHz-2.483GHz
2	Frequency bandwidth: 20Hz-20kHz
3	Transmission delay: less than 12.5ms
4	Micro USB
5	Charging time: 2 hours
6	Usage time: 4 hours
7	Size: 116*43*17mm
8	Weight:50g

FCC Warning

This device complies with Part 15 of the FCC Rules. Operation is subject to the following two conditions:

(1) This device may not cause harmful interference, and (2) this device must accept any interference received, including interference that may cause undesired operation.

NOTE 1: This equipment has been tested and found to comply with the limits for a Class B digital device, pursuant to part 15 of the FCC Rules. These limits are designed to provide reasonable protection against harmful interference in a residential installation. This equipment generates, uses and can radiate radio frequency energy and, if not installed and used in accordance with the instructions, may cause harmful interference to radio communications. However, there is no guarantee that interference will not occur in a particular installation. If this equipment does cause harmful interference to radio or television reception, which can be determined by turning the equipment off and on, the user is encouraged to try to correct the interference by one or more of the following measures:

- Reorient or relocate the receiving antenna.
- Increase the separation between the equipment and receiver.
- Connect the equipment into an outlet on a circuit different from that to which the receiver is connected.
- Consult the dealer or an experienced radio/TV technician for help.

NOTE 2: Any changes or modifications to this unit not expressly approved by the party responsible for compliance could void the user's authority to operate the equipment.