

love under control

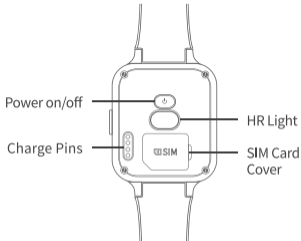
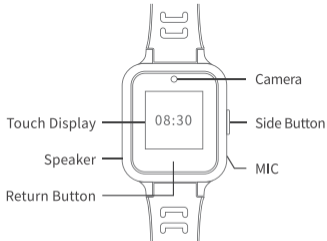


KIDS WATCH User Manual

Model: BUBBLE

01 Product Introduction

Accessories : 1. USB charge cable
2. User manual



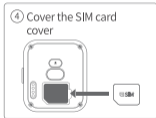
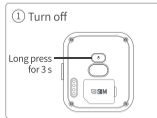
02 Install SIM Card

Step 1: Purchase a right SIM card

Please purchase a standard Nano-SIM card and make sure :

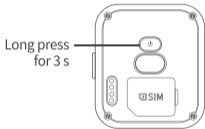
1. Its plan should include caller ID, calling, and SMS sending and receiving functions;
2. The Internet access function has been activated, and the monthly traffic is over 30MB;
3. Support 2G, 3G, 4G networks;
4. When the watch is turned on for the first time, if the PIN code requirement is displayed, please take out the SIM card, insert it into the phone, turn off the PIN function in the [Security] function of the [Settings] menu, and re-insert it into the watch. (Note: Please insert and remove the SIM card after the watch is turned off.)

Step 2: Install SIM Card



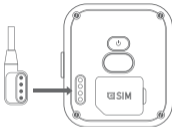
03 Power on and off

Power on/ Power off: Long press the On/Off button for 3 seconds to enable the On/Off function. If it can't be turned on, it may be caused by insufficient power. Please charge the watch before attempting.



04 Charging

USB charging line facing the back of the watch side of the metal contacts, inserted into. Until the charging indicator appears on the watch screen.



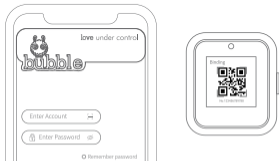
05 Download the APP

Find “**bubble**” from the App Store or scan the QR code in your watch to install the App.



06 Pairing Watch

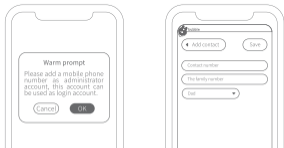
1. Open the App, Setting → Paired Keys → QR Code. Or manually enter the Paired Keys.
2. Password (Initial password) 123456



If you can not paired properly, please confirm that you watch properly connected to a network, make sure that the network returned to normal after trying to watch.

07 Basic operation

After the first pairing device enters App, suggesting playing box prompts the user administrator information, as shown below:



Bright/Black screen: short press the side button to switch the screen status;

Start SOS: Press and hold 3s to start the SOS function.



Unlock the screen: After the standby interface is unlocked, enter the main interface.



Main interface: swipe left to switch between Voice chat, call, settings, heart rate and other functions.

08 Voice chat

Sending voice

Please switch the children's watch to “ Voice chat ” - “ Family Group ” - “ Chat Room ”; press and hold the “ Record ” icon to start recording, release and send the voice, each voice can be up to 15s long.



Calling a contact

Switch the main menu to Contacts - Contact List and dial the contact .

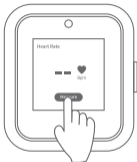
Notice: When the Reject stranger call feature is turned on, calls out of the contacts will be rejected.



10 Heart rate function

Switch the children's watch menu to “Heart Rate” - “Heart Rate Test” to start the heart rate test function. The test time is 40s, and the test result will be returned after the test ends.

Tip: Keep your wrists still during heart rate testing.



11 Basic parameters

Product name	Kid watch	Adjustable length	45-50mm
Product model	W100M	Battery capacity	550mAh
Main Size	60*43*16	Type of battery	lithium battery
Wrist strap material	Silica gel	Input voltage	4.2V
Wrist clasp material	PC	waterproofing grade	IP67

Precautions

Do not soak or rinse the product.

Keep products away from extreme conditions such as fire, high temperature and high heat.

The positioning function does not work when the watch is in the off state and outside the service area.

Warranty brief and statement

- Welcome to use the “**bubble**” Please read the instruction manual before using this product to ensure correct and safe use.

- Please use the original accessories to avoid unpredictable damage. If you do not follow the correct procedure to use or link incompatible accessories, this behavior will automatically invalidate the warranty and may even endanger the safety of you and others. The company does not assume any responsibility for this.

- If you disassemble or tamper with the outer casing of this product, the product will be disqualified.

- The contents of this manual are provided according to the conditions at the time of manufacture of the product. Unless otherwise stipulated by applicable law, no clear or tacit guarantee of any kind is given to the accuracy, reliability and content of the document.

- The contents of this manual are protected by copyright laws. Any reproduction or distribution, distribution and application of this manual in any form is strictly prohibited without the written permission of the company.

FCC Statement

This equipment has been tested and found to comply with the limits for a Class B digital device, pursuant to part 15 of the FCC Rules. These limits are designed to provide reasonable protection against harmful interference in a residential installation. This equipment generates, uses and can radiate radio frequency energy and, if not installed and used in accordance with the instructions, may cause harmful interference to radio communications. However, there is no guarantee that interference will not occur in a particular installation. If this equipment does cause harmful interference to radio or television reception, which can be determined by turning the equipment off and on, the user is encouraged to try to correct the interference by one or more of the following measures:

- Reorient or relocate the receiving antenna.
- Increase the separation between the equipment and receiver.
- Connect the equipment into an outlet on a circuit different from that to which the receiver is connected.
- Consult the dealer or an experienced radio/TV technician for help.

Caution: Any changes or modifications to this device not explicitly approved by manufacturer could void your authority to operate this equipment.

This device complies with part 15 of the FCC Rules. Operation is subject to the following two conditions: (1) This device may not cause harmful interference, and (2) this device must accept any interference received, including interference that may cause undesired operation.

Specific Absorption Rate (SAR) information:

This KIDS WATCH meets the government's requirements for exposure to radio waves. The guidelines are based on standards that were developed by independent scientific organizations through periodic and thorough evaluation of scientific studies. The standards include a substantial safety margin designed to assure the safety of all persons regardless of age or health. FCC RF Exposure Information and Statement the SAR limit of USA (FCC) is 1.6W/kg(*Next – to – Mouth Exposure Conditions - Flat / Front (10mm)*) averaged over one gram of tissue **and** 4.0W/kg(*Extremity Exposure Conditions - Flat / Rear (0mm)*) averaged over ten gram of tissue. Device types: KIDS WATCH has also been tested against this SAR limit. The use of belt clips, holsters and similar accessories should not contain metallic components in its assembly. The use of accessories that do not satisfy these requirements may not comply with FCC RF exposure requirements, and should be avoided.