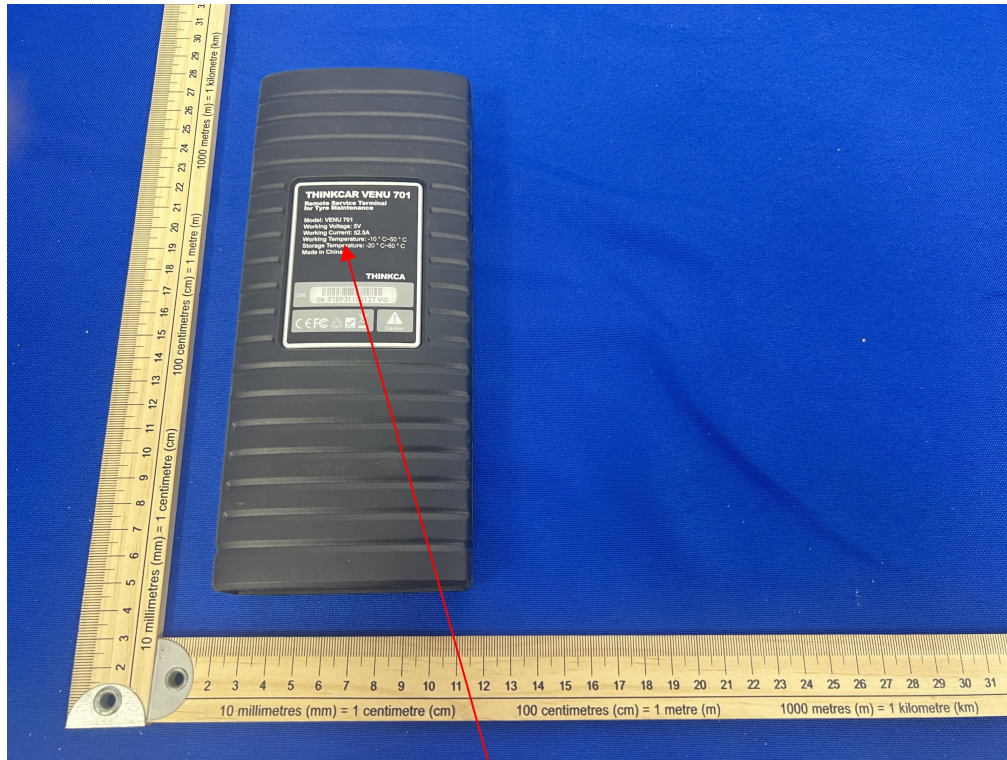


FCC ID Label Information

Label location:



Remote Service Terminal for Tyre Maintenance

Model: VENU 701

FCC ID : 2AUARVENU701

IC : 26415-VENU701

This device complies with part 15 of the FCC Rules. Operation is subject to the following two conditions: (1) This device may not cause harmful interference, and (2) this device must accept any interference received, including interference that may cause undesired operation.

Size: 5cm*6cm