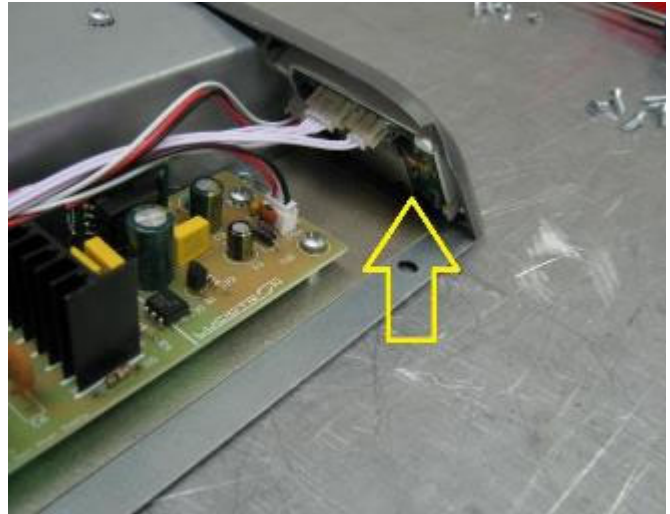
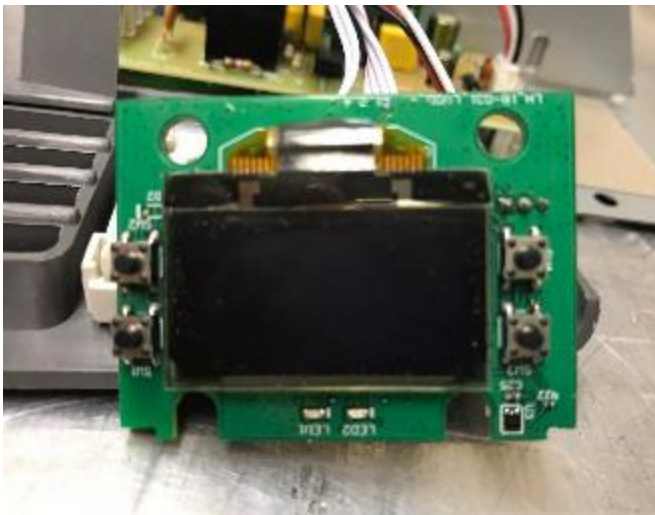




Cover removed, control panel & RF board lower right.



Location of control board & RF board.



Board removed from chassis, front view with LCD.
Side 1.

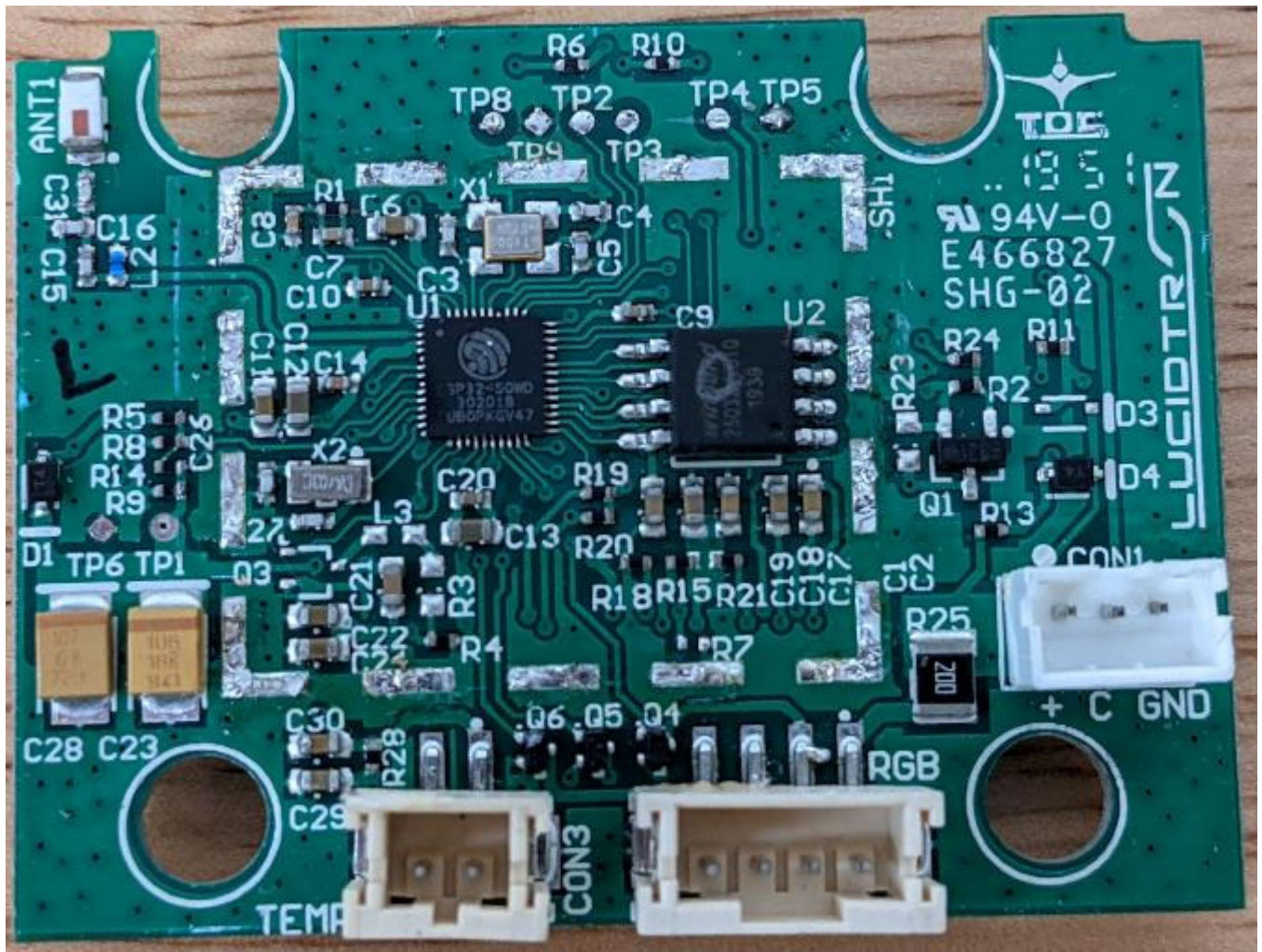


Board with shield in place.
Side 2.

Detailed photos on following pages.



Side 1 of board, LCD folded back out of way.



Side 2 of control/RF board, shield removed.
ANT1 antenna location upper left corner.
