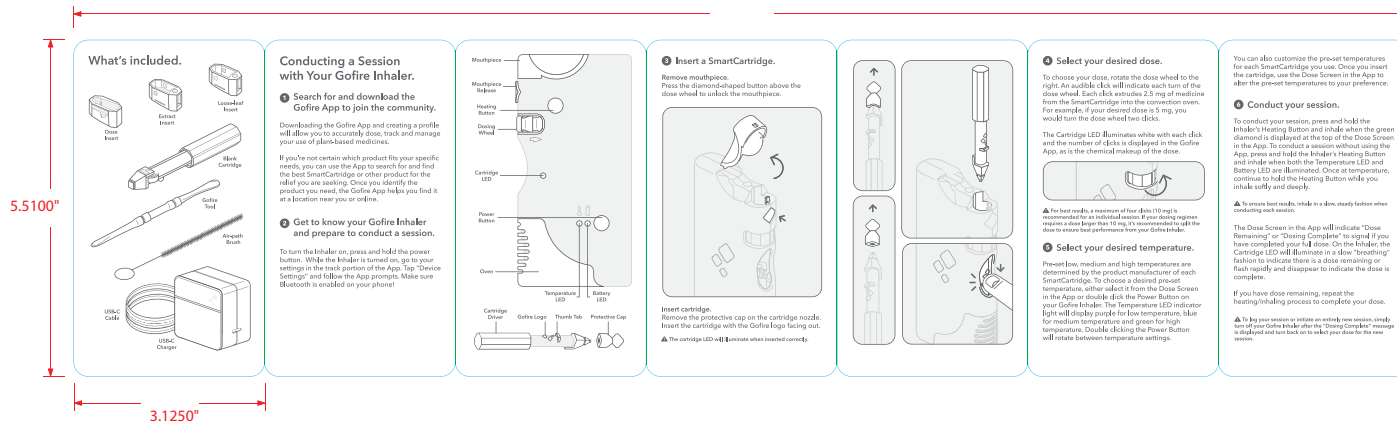


[illegible]

FRONT




21.8750"



**BACK**

### Understanding the LED lights on your Inhaler.

**Cartridge LED**  
Indicates the presence of vapor in the air path and if there is a dose remaining in the oven.





		
Flashes if dose dial is locked.	Illuminates if Cartridge inserted.	Indicates temperature of oven.

**Temperature LED**  
Allows you to quickly access, check, and change temperature from three pre-set temperature settings of your choice.

Factory pre-est temperature by cartridge:

Low Medium High

**Battery LED**  
Indicates the amount of battery remaining and the establishment of a Bluetooth connection.

			
Charge Immediately	100%	30%	10%

Using your own medicines  
with the Gofire Inhaler.

Your Gofire Inhaler comes with a variety of inserts to be used with different products. The inhaler is not intended to be used with more than one type of product at a time. Here's what you'll need to start using your own medicines:

**Loose-leaf:**  
You'll need the Loose-leaf Insert and Blank Cartridge to use your own loose-leaf with the InHale. Use the prongs at the end of the mouthpiece to remove the Dose Insert from the oven. Gently place the Loose-leaf Insert into the oven and the Blank Cartridge into the SmartCartridge Housing. Load no more than a quarter gram of finely ground material into the Loose-leaf Insert to ensure optimal experience.

**Extracts:**  
You'll need the Extract Insert and Blank Cartridge to use your own extracts with the Inhaler. Use the prongs at the end of the mouthpiece to remove the Dose Insert from the oven. Gently place the Extract Insert into the oven and the Blank Cartridge into the SmartCartridge Housing. Load your own extracts directly into the Extract Insert to vaporize. Load the equivalent of a grain of rice to enable optimal inspiration, and your class is on!

▲ Reference the "What's Included?" diagram to ensure you're using the proper components when manually loading your own personal concentrates or loose-lot materials. For precision dosing, visit an Authorized Gofree Retailer to purchase a Smart Cartridge and enhance dose precision.

Cleaning your device.

To keep your device in optimal working order,

**Inserts:**  
Remove the Dose Insert with the Mouthpiece.  
Soak the insert in isopropyl alcohol for 20 minutes.  
Soak the insert in hot water for 5-10 minutes after  
soaking in isopropyl alcohol. Place on a dry surface  
and let dry completely. Store inserts in a clean, dry  
place to prevent picking up contaminants.

**Oven:**  
Dip cotton swabs in isopropyl alcohol. Using the cotton swabs, wipe along the inside and top of the oven until they are free from oils and dirt. Dip new cotton swabs in warm water, wipe all areas cleaned with isopropyl alcohol. With the oven open, place

**Air-path:**  
Dip the Air-path Brush in isopropyl alcohol.  
Open the oven door and remove the mouthpiece.  
Push the Air-path Brush through the air-path, from the top, until you see it poke out of the oven seal.  
Pull the Air-path Brush back out. Repeat as necessary. Run hot water over the air-path Brush and then push it back through the air-path to clean out any residual isopropyl alcohol. After cleaning, let device sit for a minimum of 30 min.

To reach customer service, visit [www.Gofire.co/support](http://www.Gofire.co/support).

**Safety**

Keep your GoLife and its components out of the reach of children and pets. GoLife is intended for adult use only as it contains small parts that may present a choking hazard.

Do not heat the device when the oven door is open.

After deeming your device, do not use for at least 30 minutes.

Do not disassemble or tamper with your GoLife. Any inappropriate, incorrect, or impossible use will void any warranty and can result in serious injury.

Do not use your GoLife if it appears to be damaged, broken, or is otherwise in an unsafe condition.

Do not use your Gofline if it is unusually hot to the touch.  
Do not expose your Gofline to extremely high or low temperatures.  
Do not store your Gofline or any of its components in or near heat sources.  
Do not use your Gofline in an atmosphere with risk of explosion or ignition.  
Only use certified authentic Gofline components within your device.

Do not place your GoFins in a dishwasher, washing machine, or dryer.

Do not expose your GoFins to rain, drizzle, or wet environments.

Charge your GoFins using only the provided charging cradle to avoid potential battery or Bluetooth, explosion, or fire.

Your GoFins contains a lithium-ion battery and should be recycled or disposed of in accordance with local requirements to avoid potential injury and/or environmental harm.

Do not dispose of the battery or any component of your GoFins in a fire as it could cause an explosion or another serious injury.

Your GoFins can only be repaired by an authorized GoFins Service Center.

Improperly performed repairs without the use of original spare parts can prove dangerous to the user.

Never cover the ventilation slots with any objects or materials. If the ventilation slots are not clear of dust your device becomes

## Intended use.

It is important to observe and practice the instructions provided in this manual, in order to use your Guflex in the best possible way for your personal use.

Guflex is **not** responsible for any damage or personal injury caused by inappropriate, incorrect, or irresponsible use. Your Guflex may only be used by a qualified person with medical training and materials. The use of other substances can present a health risk. Your Guflex is not intended to cure or prevent any medical condition. Ask your doctor if any substance you intend to use in your Guflex is right for you before utilizing the device.

There are many other factors or observations if you have medical concerns. It is possible that some **pleats** may cause allergic or adverse reactions for the user. If this occurs, it is urgently recommended to refrain from further use of such pleats.

A note from legal

The statements set forth in this document have not been evaluated by the FDA. The Gofine <sup>®</sup> Inhaler is not a medical device and is not intended to diagnose, treat, cure, or prevent any disease.

Gofine wants to make managing your alternative health a real possibility, but you should not rely on Gofine in any capacity for medical or therapeutic advice, nor should you substitute your medications for Gofine products. The use of Gofine may not be appropriate in all circumstances. Gofine, Inc. does not provide health or medical advice.

NOTICE:  
This device complies with Part 15 of the FCC Rules and with Industry Canada License-exempt RSS standard(s).  
Operation is subject to the following two conditions:  
(1) this device may not cause harmful interference, and  
(2) this device must accept any interference received, including interference that may cause undesired operation.

Changes or modifications made to this equipment not expressly approved by Gefco Inc. may void the FCC authorization to operate this equipment.

condition suivante:  
(1) l'appareil ne doit

**Warranty.**

GoPro Limited Lifetime Warranty

GoPro, Inc. ("GoPro," "We" or "Our") extends this Warranty only to the consumer who originally purchased an iCharger and continues to own their iCharger at the time a Warranty Service is requested ("You" or "Your"). It does not extend to any subsequent owner or other transferee of the iCharger.

With respect to the date of purchase, Williams testified that

To obtain warranty service, You must email Our Customer Service Department at [support@gofire.co](mailto:support@gofire.co) during the Warranty Period to obtain a Defective Merchandise Authorization ("DMA") number. No warranty service will be provided without a DMA number.

Warranty information can be found at [www.Gofire.com/pages/warranty](http://www.Gofire.com/pages/warranty).

If you would like a copy to be mailed or emailed to you free of charge please contact [help@gofire.co](mailto:help@gofire.co) or call (720) 665-6267 or

Gordon, Inc.  
955 Broadway St.  
Denver, Colorado, 80203



## Inhaler Guide

THIS DRAWING IS THE PROPERTY OF  
INFORMATION CONTAINED HEREIN  
DISCLOSED WITHOUT THE PRIOR WRITTEN  
THIS DRAWING SHALL BE RETURNED TO THE  
UNLESS OTHERWISE SPECIFIED  
DIMENSIONS IN INCHES

THIS DRAWING IS THE PROPERTY OF **GO FIRE CORP.**  
 INFORMATION CONTAINED HEREIN SHALL NOT BE COPIED, REPRODUCED OR  
 DISCLOSED WITHOUT THE PRIOR WRITTEN CONSENT OF **GO FIRE CORP.**  
 THIS DRAWING SHALL BE RETURNED UPON REQUEST.

---

**UNLESS OTHERWISE SPECIFIED**

DIMENSIONS IN:	INCHES	MATERIAL:
----------------	--------	-----------

G O F I R E

Leaflet		REV
DWG NO	DOC-00001	3
DATE	WEIGHT	

---