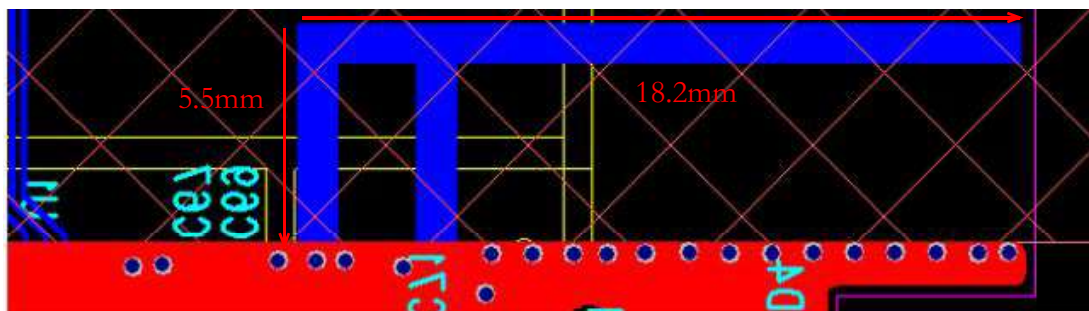


Manufacturer: Teladoc Health

- 1: Antenna model: inverted F antenna (IFA)
- 2: Antenna type: PCB sink plate antenna
- 3: Gain: 1.5dB
- 4: Antenna size as shown in Figure 1



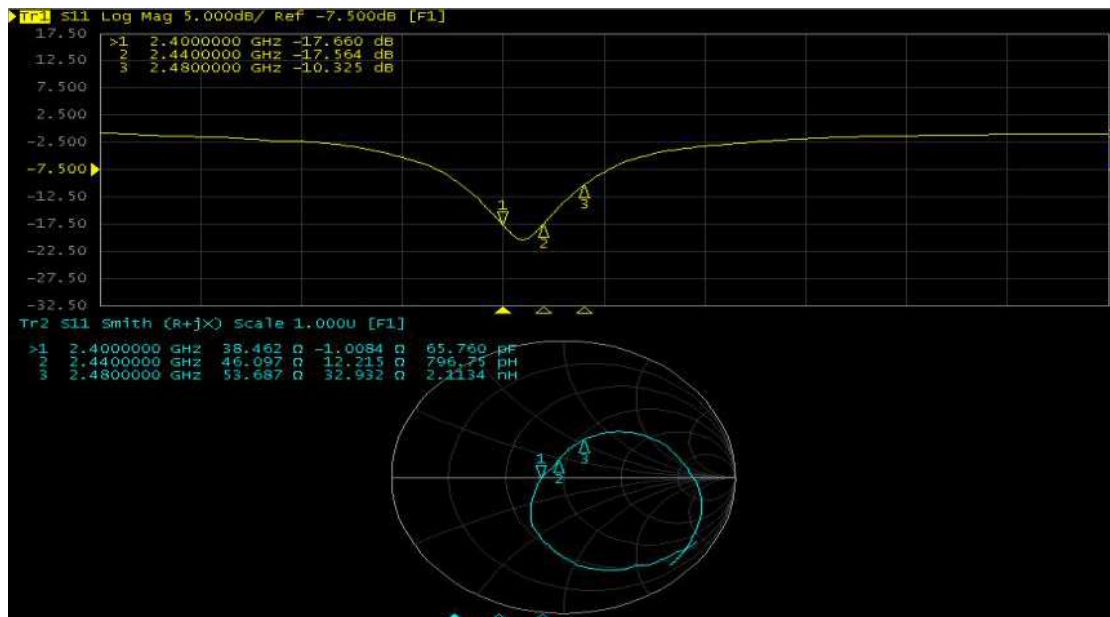
圖一 18.2\*5.5mm

##### 5: 天线效率

Freq (MHz)	Effi (%)	Effi (dB)	Gain (dBi)
2400	36.8	-4.3	0.8
2410	40.3	-3.9	1.3
2420	40.4	-3.8	1.4
2430	41.6	-3.8	1.5
2440	40.5	-3.7	1.4
2450	40.7	-3.7	1.4
2460	41.2	-3.8	1.5
2470	40.0	-4	1.4
2480	38.0	-4.2	1.1
2490	35.9	-4.5	0.9
2500	34	-4.7	0.7

Manufacture Name:FUJIAN ZHENHONG ELECTRONIC TECHNOLOGY CO.,LTD  
Address:NO.10,XIAN ZHI ROAD,MAWEI DISTRICT,FUZHOU,FUJIAN

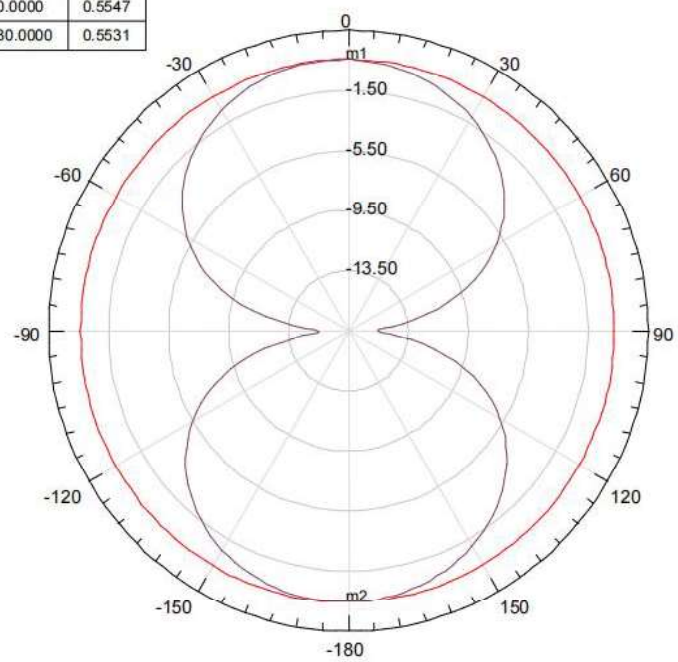
6.天線性能如 圖二 所示，工作頻段覆蓋整個 2.4G ISM 頻段。



图二

7: 2D 和 3D 增益如下，達到 1.5dB 左右:

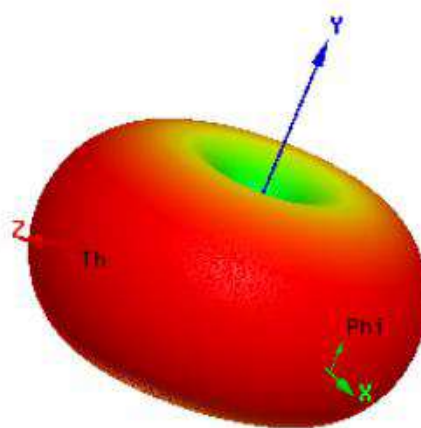
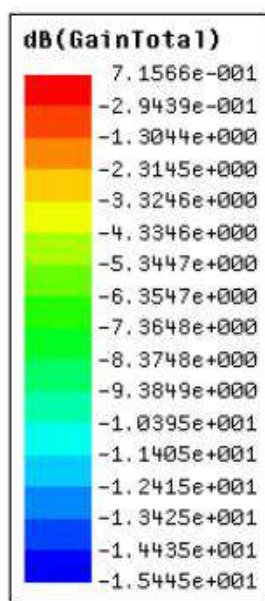
Name	Theta	Ang	Mag
m1	0.0000	0.0000	0.5547
m2	180.0000	180.0000	0.5531



Curve Info	
—	dB(GainTotal)
Setup1 : Sweep1	Phi='0deg'
—	dB(GainTotal)
Setup1 : Sweep1	Phi='90deg'

1.5dBi

圖三



1.5dBi

圖四 天線增益