

SMPA-R1305G PLAYER

User Manual



2021 December

SMPA-R1305G PLAYERI is a smart player box that supports Windows and Linux operating systems. Customers can develop their own under this system. (for detailed configuration, please refer to the product configuration parameter table of SMPA-R1305G Player box). Customers can use the player box to provide multimedia content of the display through documents or network

Figure 1、 Product interface diagram:



2、 Boot up

1) 、 Connecting power supply

Connect the 12V / 5A power adapter of the accessory to the power socket, connect the DC anti disconnection connector of the adapter to the DC12V socket of the equipment, and tighten the nut;

2) 、 Key switch and status indication

Press the power button to turn on the device, power is always on green. Hold down the power button for 8 to 10 seconds, the system shuts down and the power is always bright red.

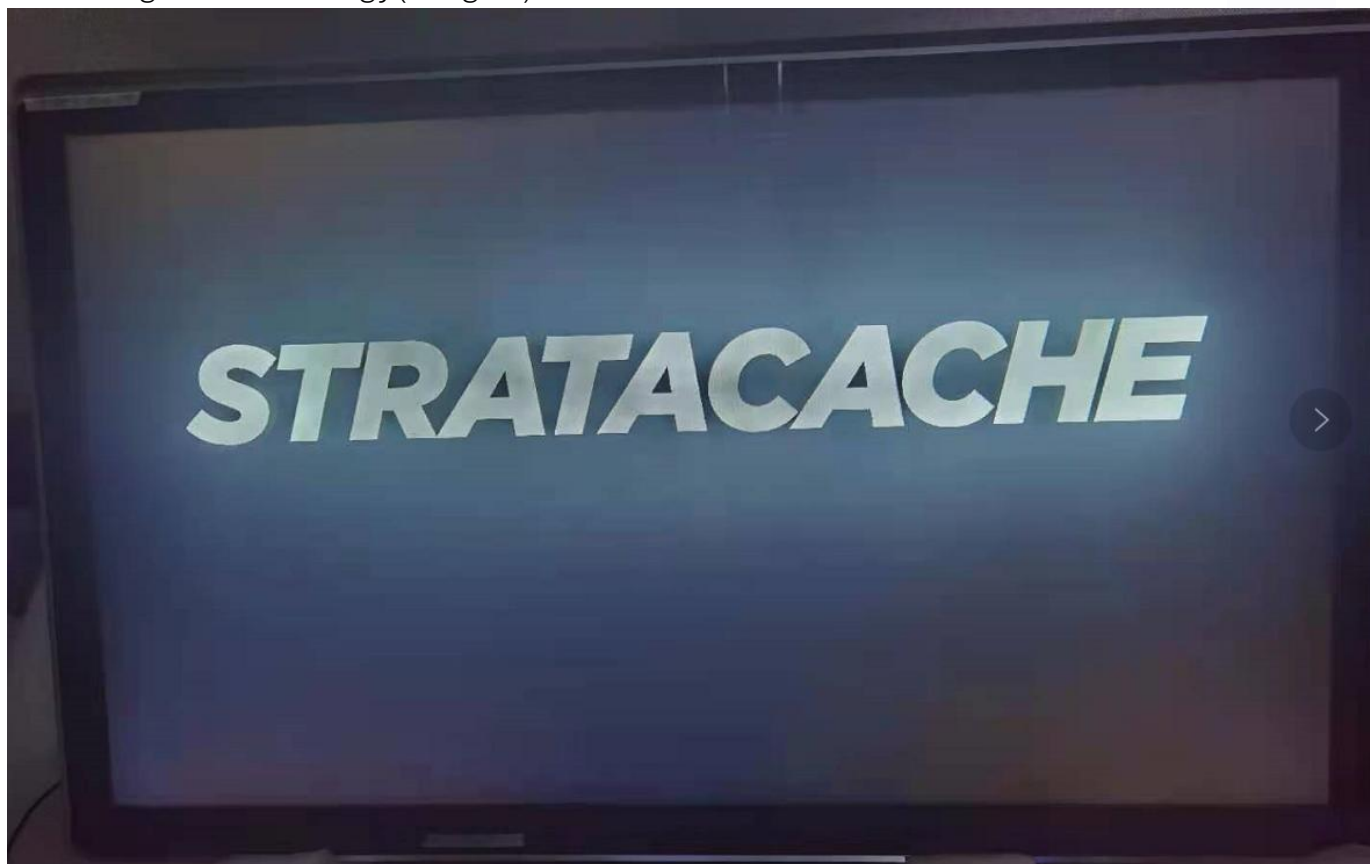
3、 Instructions

1) 、 External display:

The player box HDMI out is connected with the external display HDMI in through the HDMI cable to realize the display interface output;

The external device can input interface data through the player box HDMI in, and the player box can synchronously output the display interface from the HDMI out to the external display.
(The HDMI in is option)

Figure 2: display desktop



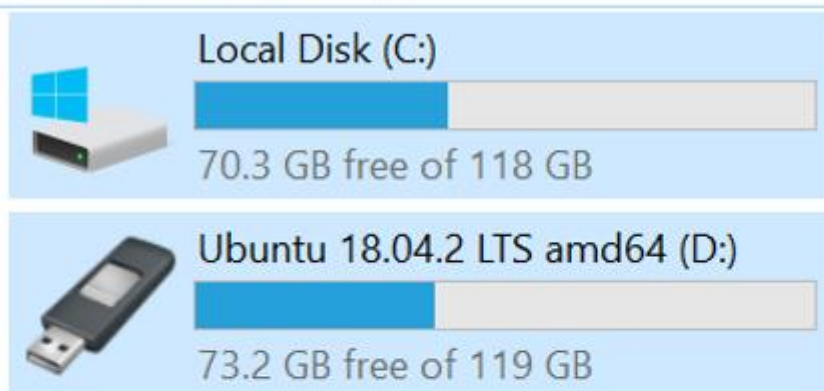
2) . External USB device:

In the state of connected external display device, USB mouse and USB keyboard can be connected through USB2.0 and USB3.0 ports to realize interface switching, data input and output and other functions.

The function of copying or loading data files of external storage devices such as USB flash disk can be realized.

Figure 3: USB insertion display in Explorer

▼ Devices and drives (2)



3) . Wired, wireless networking and WiFi functions:

The player box can be connected to the network through RJ45 port and wifi antenna for network data transmission.

Figure 4: wired and wireless networking setting interface entrance

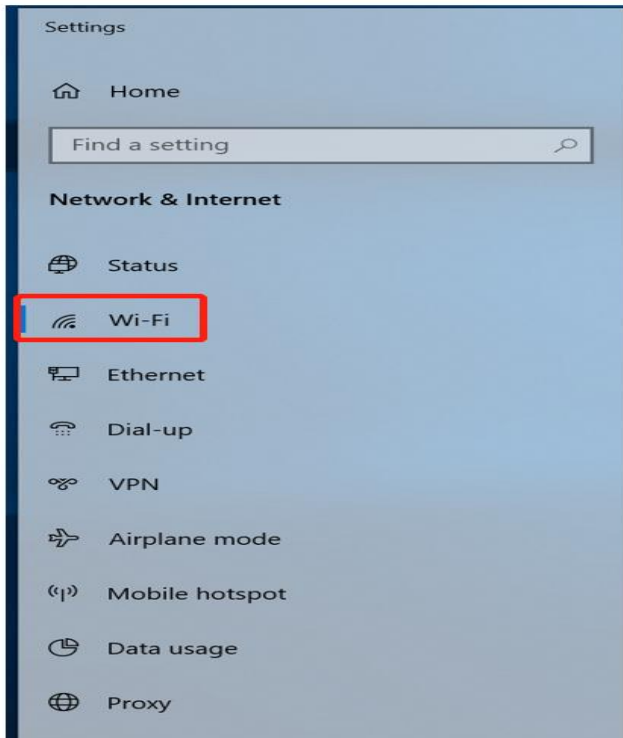
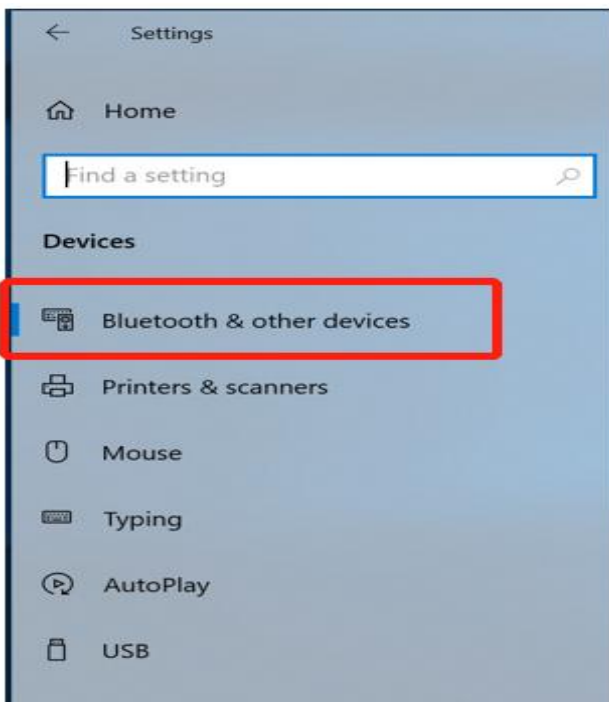


Figure 5: Bluetooth setting interface entry



4) . Audio transmission:

The player box can transmit audio with external player equipment through aux port.

Figure 6: sound adjustment

Sound

You need to activate Windows before you can personalize your PC.

Choose your output device

Speakers (Realtek High Definition A... ▼

Some apps are using custom output settings. You can customize these in advanced sound settings.

[Device properties](#)

Volume

  59

 Troubleshoot

[Manage sound devices](#)

Input

Choose your input device


Microphone (Realtek High Definitio... ▼

Some apps are using custom input settings. You can customize these in advanced sound settings.

[Device properties](#)

Test your microphone

 Troubleshoot

[Manage sound devices](#)

5) . Serial communication:

The external equipment can realize the RS232 serial communication function through the COM port of the player box.

6). Extended switch machine: (it needs to be refitted professionally, temporarily omitted, you can contact the manufacturer)

7). Equipment reset: in case of equipment crash, the device can be forced to restart by pressing reset hidden button.

4. firmware upgrade:

The player box is equipped with the best firmware at the factory. Customers need to contact Scala if they have firmware requirements.

5. packing configuration

1. Player box host, 1pcs;



SCALA Digital Technology(Ningbo) Co., Ltd.

Version: V1.1

2. 12V / 5A adapter, 1pcs;
3. HDMI transfer line, 1pcs;
4. Install screw pack, 1pcs;

SCALA Digital Technology(Ningbo) Co., Ltd.

Address: No. 7 Hong Da Road , Jiang Bei District, Ning Bo,Zhe Jiang

Tel: +1 610 363 3350

Fax: +1 610 363 4010

Website:<https://scala-china.com/>

R PLAYER Product configuration parameters



Spec Date: 3 JAN, 2021

Product Descriptions

Scala SMPA Pla



Hardware & OS	OS	SUPPORT window10, Linux-Ubuntu
	APU	AMD RYZEN EMBEDDED R1305G or R1505G
	Graphics	AMD Vega GPU with up to 3 Compute Units
	Memory	8GB DDR4-2400 SO-DIMM Dual channel,Max 32GB
	Network	RTL8111H

	Interface	1 x DC input[with anti-loose mechanism], 4 x USB3.0 2xAudio Jack (Front-L/R + ,Aux-In) 1 x HDMI Output (HDMI 2.0, up to 2160@60fps , support HDCP) 1x HDMI IN (PCIE, 1080P, Option) or 2nd 1G Ethernet 1x Power button 2 x 1G Ethernet 1 x Mic 1XDB9 for RS232 2X SIM socket (Inside the machine) 1X RJ11 for Tethered Power Button & LED Indicator Port 1X Reset Button
	SSD	128GB NVME SSD, Max 2T
	WIFI	WiFi 2.4GHz/5GHz Dual-Band Support 802.11a/b/g/n/ac
	Bluetooth	Bluetooth 4.0 standard including Bluetooth 4.0 Low Energy (BLE)
	Expansion Slots	1xM.2 M key (2280) for storage ,1xM.2 E key for HDMI Capture or 2nd Ethernet, 1xMini pcie for 4G, 1x M.2 E key (2230) for WIFI, 2x SODIMM sockets for memory
Power	Power input by adapter	DC12V,5A
	Power input by POE	NA
General information	Storage Temp	(-15 -- 65 degree)
	Working Temp	(0 -- 40 degree)
	Storage/Working Humidity	(10 -- 90%)
	Dimension	180X281X35mm
	Net Weight	1.81KG



FCC Warning

This device complies with part 15 of the FCC rules. Operation is subject to the following two conditions: (1) this device may not cause harmful interference, and (2) this device must accept any interference received, including interference that may cause undesired operation

Changes or modifications not expressly approved by the party responsible for compliance could void the user's authority to operate the equipment.

NOTE: This equipment has been tested and found to comply with the limits for a Class B digital device, pursuant to part 15 of the FCC Rules. These limits are designed to provide reasonable protection against harmful interference in a residential installation. This equipment generates uses and can radiate radio frequency energy and, if not installed and used in accordance with the instructions, may cause harmful interference to radio communications. However, there is no guarantee that interference will not occur in a particular installation. If this equipment does cause harmful interference to radio or television reception, which can be determined by turning the equipment off and on, the user is encouraged to try to correct the interference by one or more of the following measures:

- Reorient or relocate the receiving antenna.
- Increase the separation between the equipment and receiver.
- Connect the equipment into an outlet on a circuit different from that to which the receiver is connected.
- Consult the dealer or an experienced radio/TV technician for help.

Radiation Exposure Statement

This equipment complies with FCC radiation exposure limits set forth for an uncontrolled environment. This equipment should be installed and operated with minimum distance 20cm between the radiator and your body.