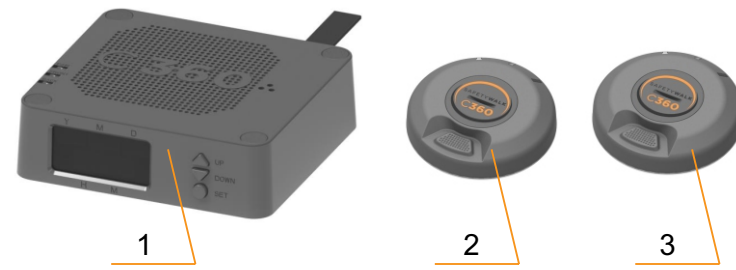
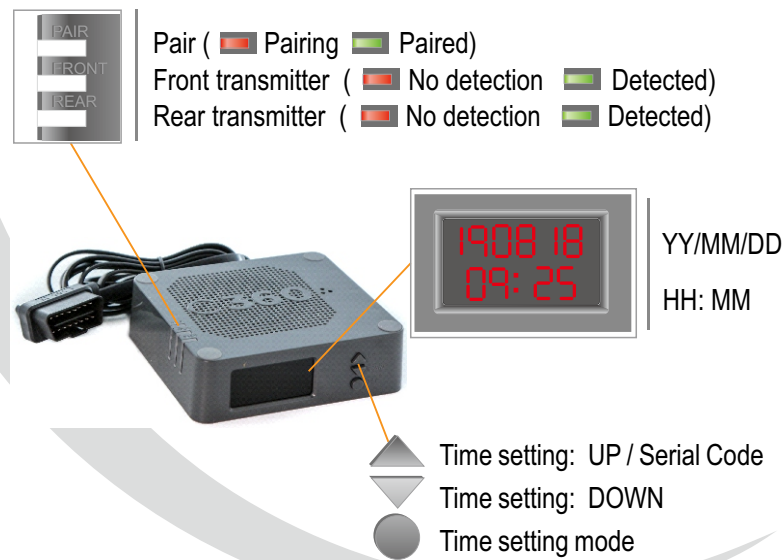


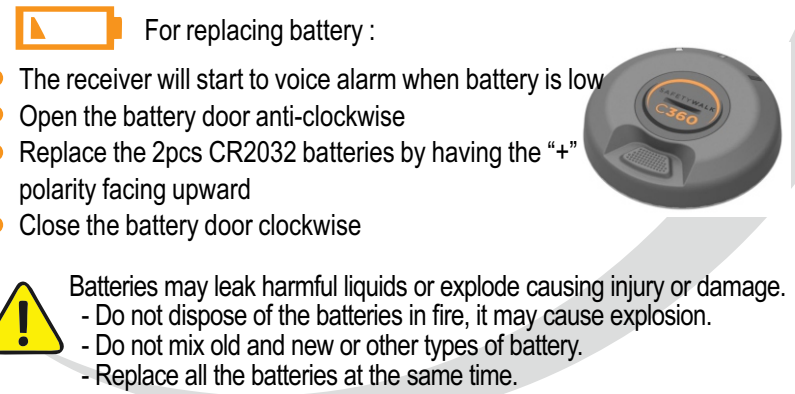
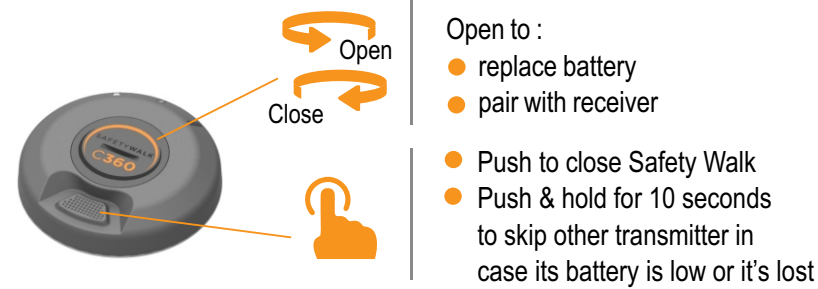
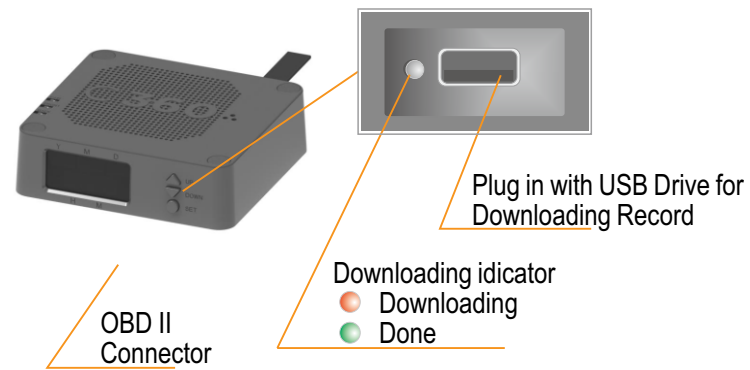
## INSTALLATION



1. Receiver 2. Transmitter (Front) 3. Transmitter (Rear)



## PARTS & ACCESSORIES



## INSTALLATION

### Installation of C360 Transmitters.

- The front transmitter should be located on the front passenger most portion of the vehicle. The rear transmitter should be mounted to the rear passenger most portion of the vehicle.



- Find a suitable, flat mounting location for the transmitters.
- Mounting of the transmitters can be accomplished with screws or with the pre-attached adhesive.

## INSTALLATION

### For mounting using the adhesive backed mounting plate:

- This method of attachments should be accomplished in temperatures above 60 degrees. Warming the mounting surface of the vehicle will assist with proper adhesion.
- Clean the mounting surface area on the vehicle with alcohol.
- Remove the protective covering from the adhesive backing on the transmitter. DO NOT touch the adhesive backing or the mounting surface.
- Find the appropriate location for the transmitter. Hold the transmitter housing against the cleaned mounting surface. Apply even pressure for 30 seconds to ensure proper adhesion.

### For Mounting with Screws:

- To attach the transmitters with screws, remove the slotted battery cover. Locate two screws directly above and below the batter holder. Removing the two screws will allow the back mounting plate to release from the transmitter.
- Locate the desired area to mount the transmitter. Using the mounting plate, mark and predrill the two mounting holes.
- Mount the plate using screws. Reattach the transmitter to the mounting plate using the two screws previously removed in battery compartment.
- Install Two 2032 batteries into each transmitter. The batteries are located under the slotted cover. Rotate the slotted cover counter clockwise.

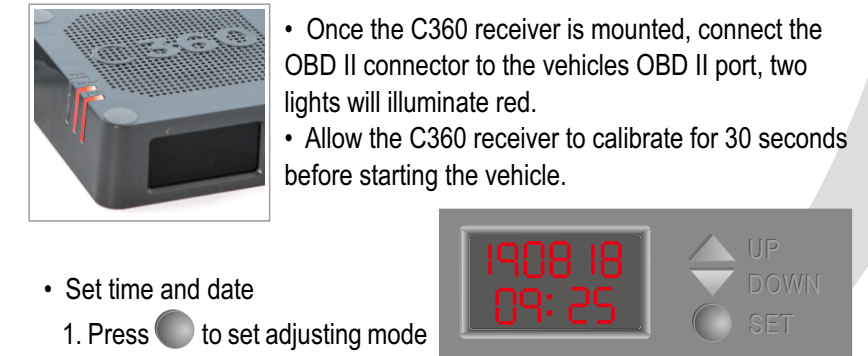
## INSTALLATION

### Installation of the C360 Receiver.

- The vehicle MUST be in the off position. Failure to follow this direction will cause the C360 to not function properly.
- Find a suitable location to mount the C360 receiver in the operating cabin of the vehicle.



- Mount the C360 receiver using the screws supplied, or double sided emblem adhesive tape. Please clean the mounting area with alcohol if using an adhesive.



- Set time and date
- Press ● to set adjusting mode
- Press it again to move to the numbers need to change
- Press the ▲ or ▼ to adjust the number
- Press ● to close the set mode when done with adjusting

## SAFETYWALK C360



**Safety Walk 360 LLC**  
 1516 Meadow Rd  
 Grand Island, NE 68803 US  
[www.safetywalk360.com](http://www.safetywalk360.com)

**CALIFORNIA PROPOSITION 65 WARNING :**  
 THIS PRODUCT CONTAINS CHEMICALS KNOWN TO THE STATE OF CALIFORNIA TO CAUSE CANCER, BIRTH DEFECTS OR OTHER REPRODUCTIVE HARM.

Made in China

## USER'S INSTRUCTION

### How to pair a new / replacing Transmitter with the receiver.

- Your Transmitters have already been paired with the Receiver, unless it's a newly added one, or replacing to the original one, the following process will be needed to pair it with your trasmitter:
- Open the USB cover on the side of Receiver, find the pairing button on its left side (The same button for downing switch)
- Open the battery door of the Transmitter, slide the switch to "F" or "R" to position the Transmitter to the front or rear of vehicle. It will over-wright the other one if both are switched to "F" or "R"
- Find the pairing button beside the slide switch within the Transmitter's battery compartment
- Press **BOTH** the buttons on the Receiver and Transmitter at the same time, the pairing indicator on the Receiver will glow red when pairing triggered
- Hold **BOTH** the buttons the pairing is ongoing, till the indicators on both Receiver and Transmitter glow green simultaneously, and the pairing indicator on the Receiver turned off

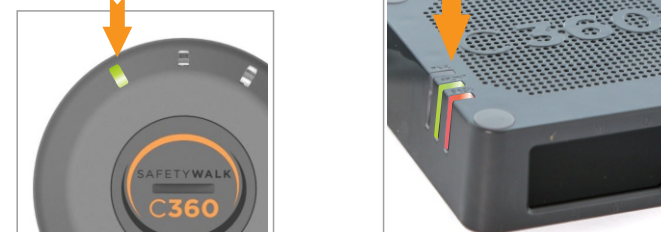


- Release the buttons, the indicator on the Transmitter will turn off, pairing is done.

## USER'S INSTRUCTION

### C360 safety walk instruction.

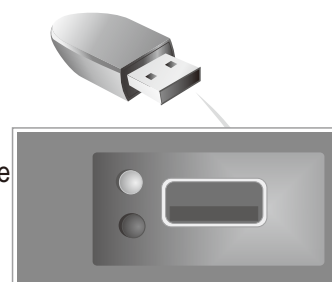
- A safety walk is a routine process requested for vehicle driver to check the safety status all around the vehicle before drive away, when doing this, both the front and rear Transmitters need to be pressed.
- Do safety walk before vehicle is ignited, or, the reminding alarm will be triggered, until that C360 safety walk is done, with both Front & Rear transmitter pressed. The indicator on both the Transmitter and Receiver will be glowing in green when successfully connected.
- Pull away within 3 min after safety walk, a delayed driving will trigger the alarm again to remind another safety walk.
- An idling parking of over 4 min will also be requested to do a safety walk before pull away.
- An ignorance of the alarm will be recorded as violation.



## DOWNLOAD THE RECORD

### How to download the record.

- A C360 has a built-in ROM that can save 2000 driving records, after the storage is full, new record will be stored to overwrite the previous oldest ones.
- The stored record can be downloaded by simply plug-in a USB drive, with a single push of button, the records will be downloaded and stored within the USB drive, and is readable in all systems.
- Plug in the USB drive
- After seeing the red indicator on, push the button
- You'll see the red flashes, that indicates the download is ongoing
- When the indicator turns green, the download is done, just pull off the USB drive.
- The downloaded records are stored in .TXT format, that is readable in all computer systems



## SAFETYWALK C360

## USE'S MANUAL



### FCC Statement

This device complies with part 15 of the FCC rules. Operation is subject to the following two conditions: (1) this device may not cause harmful interference, and (2) this device must accept any interference received, including interference that may cause undesired operation.

Changes or modifications not expressly approved by the party responsible for compliance could void the user's authority to operate the equipment.

NOTE: This equipment has been tested and found to comply with the limits for a Class B digital device, pursuant to part 15 of the FCC Rules. These limits are designed to provide reasonable protection against harmful interference in a residential installation. This equipment generates uses and can radiate radio frequency energy and, if not installed and used in accordance with the instructions, may cause harmful interference to radio communications. However, there is no guarantee that interference will not occur in a particular installation. If this equipment does cause harmful interference to radio or television reception, which can be determined by turning the equipment off and on, the user is encouraged to try to correct the interference by one or more of the following measures:

- Reorient or relocate the receiving antenna.
- Increase the separation between the equipment and receiver.
- Connect the equipment into an outlet on a circuit different from that to which the receiver is connected.
- Consult the dealer or an experienced radio/TV technician for help.

The device has been evaluated to meet general RF exposure requirement. The device can be used in portable exposure condition without restriction.