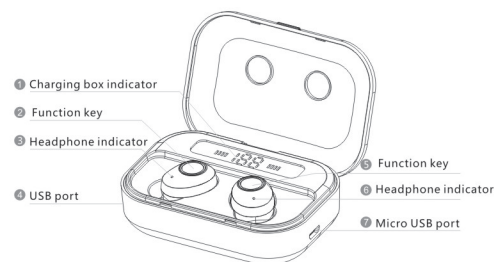


M7

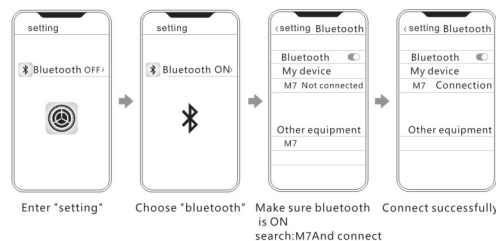
User Manual of Stereo Wireless Bluetooth Earbuds

Product picture



User manual

1. Please make sure the charging box has electricity. If the charging box is out of power, please fully charge the charging box.
2. Take the L/R earphones out of the charging box and wear them on the left and right ears respectively. The headset will automatically turn on and automatically pair. (Voice prompt: power on wait for pairing, pairing successfully).
3. Turn on the phone Bluetooth, click on the connection pair name M7 to connect (voice prompt: "Connected successfully").



Warm tips

When using it for the first time (or not using it for a long time), please make sure to charge the earphones and charging box before use.

Charging for headsets:

Put the headset into the charging box and close the lid to charge. Headphone indicator: red light when charging, red light off after full.

Charge the charging box

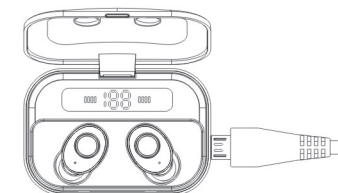
Take the two headphones out of the charging box, plug in the charging port with a 5V/1A USB, and put the headset back into the charging box. Then they are charging. Charging box indicator light: charging flashing light, full charging light is always on.

Charging box to charge the headset:

Charging box indicator: The light flashes when charging, and the light off after full charging.

Charging box to charge the phone:

Connect the charging USB port with a USB cable to charge the phone. Charging box indicator light: The light flashes when charging, and the light off after full charging.



Product parameters

Model: M7;
Bluetooth specification: V5.0
Bluetooth Profile: A2DP, AVRCP, HFP, HSP
Working voltage: 3.1V~4.2V;
Charging voltage: 5V-1A;
Battery capacity of the headset: 50MAH;
Battery capacity of the storage box: 3600MAH;
Transmission distance: 10M;
Call time: 6h;
Play time: 4h;
Charging time of headset: 30-45min;
Charging time of the Charging box: 2-3h;
Support system: All Bluetooth devices and mobile phones;
Package Contents: Charging box*1, Headset: L/R, Data cable *1;

Functional operation

function key operation instructions

Power on — long press the touch function button for 3 seconds;
Shutdown — Press and hold the touch function button for 5 seconds;
Play/Pause — Click the touch function button;
Answer the phone — Click the touch function button when calling;
Hang up the phone — Click the touch function button;
Refuse to answer the phone — Press the button for 2 seconds to touch the function button;
Next track — Double-click the touch right earphone function button;
Previous track — Double-click the touch left earphone function button;
Volume down — three-touch the touch right earphone function button;
Volume up — three-touch the touch left earphone function button;
Wake up SIRS: Double-click the touch function key to enter SIRS in the unplayed/paused state;
Automatically report the number when you call;

One earphone connection

Turn off one earphone first, press and hold the power button for 5 seconds to turn on the other headset to enter pairing mode. (Waiting for connection: red and blue lights flashing) turn on the phone to connect (Connection is successful: no flashing light).

Manually pair the L headset with the R headset (Headset reset pairing)

At the same time, press and hold the touch function buttons of the left and right earphones until the red and blue lights alternately flash and then release the hand. Double-click the right ear touch function button to pair. (successful pairing, the right earphone lights flashes red and blue, and the left earphone lights does not flash) Turn on your phone's Bluetooth and tap Connect to use it. (The two headphones do not flash after the connection is successful)

Headphones automatically shut down

Put the headset into the charging box. The headset will automatically shut down and charge. If you do not have a charging box, disconnect your phone's Bluetooth and the headset will automatically shut down after about 5 minutes.

FAQ

- Q: Charging case can not charge?
A: Ensure that the charging cable is properly connected to the charging port or replace charging cable.
- Q: Headphones can not charge?
A: Please confirm that the charging box has electricity, take the headset out of the charging box, and then put it in, and repeat it several times to make the charging contacts fully contact.
- Q: Signal is not stable or left earphone is out of voice?
A: Try to wear the earphones well, and put the mobile on front pocket when used in outdoor.
- Q: When search the bluetooth, display two connection names of "M7"?
A: Forget the two bluetooth name of "M7", turn off the bluetooth and connect as above "get quick start".
- Q: The sound volume is down or not clear when making calls?
A: Try to turn the earphone volume up or turn the mobile phone volume up, and move phone closer to the earphones.
- Q: How to connect two headsets to two mobile phones separately?
A: Turn off one earphone first, press and hold the power button for 5 seconds to turn on the other headset to enter pairing mode. (Waiting for connection: red and blue lights flashing) turn on the phone to connect (Connection is successful: no flashing light). After the first headset is successfully connected to the first handset, then open the second earphone and connect it to the second mobile phone.

Attention:

1. Please use the product within 10 meters of the effective environment, it may cause lose signal or disconnect over 10 meters, Please read the manual before using the product.
2. Use a 5V/1A charger when charging the charging box. Do not use a charger with a voltage higher than 5V or other charger.
3. Do not remove or refit earphones for earphones for any reason, otherwise it will lead to headset damaged and burn. these are not covered by warranty.
4. Do not touch the earphones in corrosive liquid, otherwise it will cause serious damage. The manufacturer will not guarantee the damage caused under this situation.
5. Do not put the equipment under too high or too low temperature (Below 0 °C or above 45 °C).
6. Please avoid approaching the eyes of children or animals when using equipment lights.
7. Do not use equipment in the thunderstorm weather. Thunderstorms may cause abnormal equipment operation and increase the risk of electric shock.

Warning:

This product contains a built-in lithium battery. Please do not expose this product to strong sunlight, roasting or throwing it into the fire, as they may explode.

FCC Caution:

This device complies with part 15 of the FCC Rules. Operation is subject to the following two conditions: (1) This device may not cause harmful interference, and (2) this device must accept any interference received, including interference that may cause undesired operation.

Any Changes or modifications not expressly approved by the party responsible for compliance could void the user's authority to operate the equipment.

Note: This equipment has been tested and found to comply with the limits for a Class B digital device, pursuant to part 15 of the FCC Rules. These limits are designed to provide reasonable protection against harmful interference in a residential installation. This equipment generates uses and can radiate radio frequency energy and, if not installed and used in accordance with the instructions, may cause harmful interference to radio communications. However, there is no guarantee that interference will not occur in a particular installation. If this equipment does cause harmful interference to radio or television reception, which can be determined by turning the equipment off and on, the user is encouraged to try to correct the interference by one or more of the following measures:

- Reorient or relocate the receiving antenna.
- Increase the separation between the equipment and receiver.
- Connect the equipment into an outlet on a circuit different from that to which the receiver is connected.
- Consult the dealer or an experienced radio/TV technician for help.

The device has been evaluated to meet general RF exposure requirement. The device can be used in portable exposure condition without restriction.