

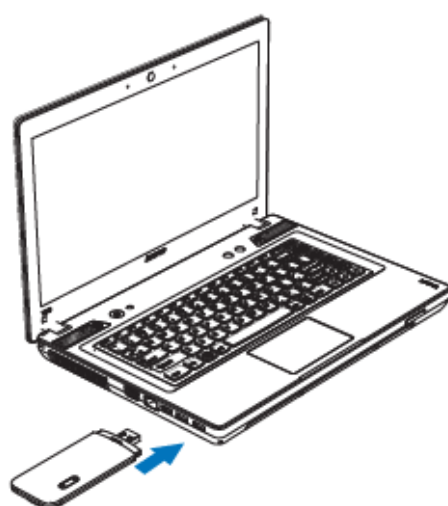
# Global Bands Dongle TD10

## User Manual



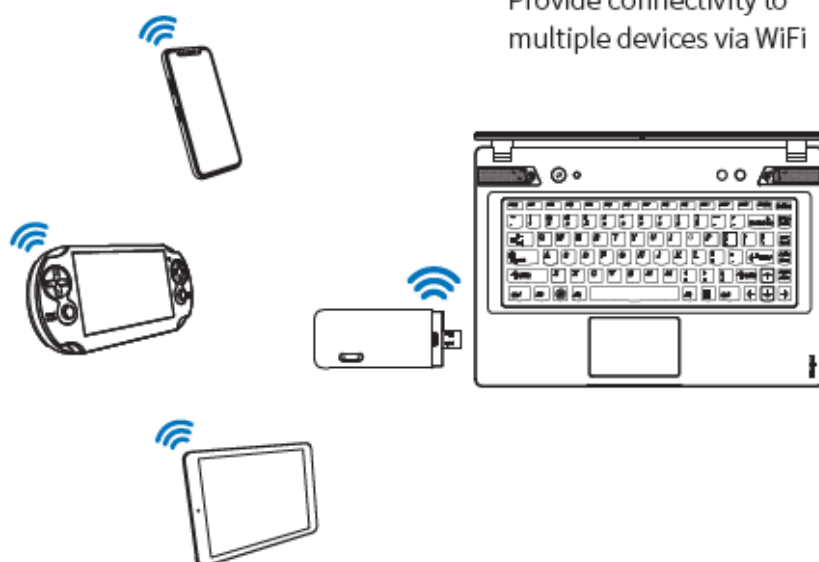
## Use scenario description

The global bands dongle TD10 supports VSIM technology, which can be used without inserting a physical VSIM card when a data package is purchased, and supports global 4G/3G bands for worldwide use.



1

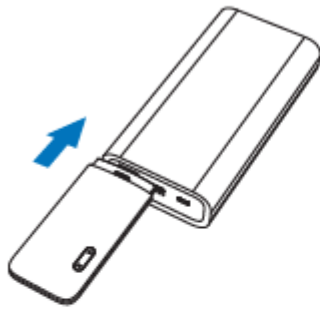
Scenario 1: Connect to a computer via USB port



2

Provide connectivity to multiple devices via WiFi

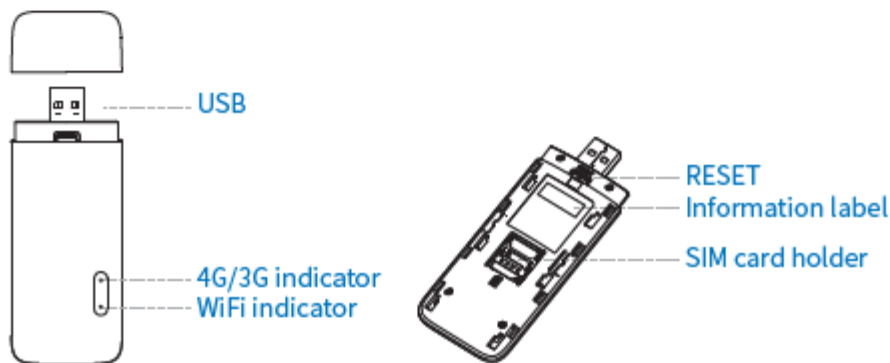
## Use scenario description



3

Can be plugged into mobile power bank to provide WiFi connectivity

## Appearance and interface description



### 4G/3G indicator

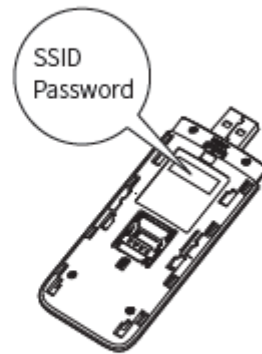
Green light always on	Network connection is normal
Red light flashing	Network registration is in progress, please wait
Red light always on	Wireless network connection is abnormal
Yellow light always on	Wireless network signal is weak, recommend to change to a new location to use
white light flashing	Firmware is being upgraded, please wait patiently, do not disconnect the device power during this period

### WiFi indicator

Green light always on	The WiFi is working properly
Red light always on	WiFi is malfunctioning

## SSID and WiFi password

When a WiFi device connects to TD10, it is necessary to select the TD10's SSID (Service Set Identifier) and enter the WiFi password. The SSID and WiFi password are printed on the internal label, which can also be found on the label on the box.



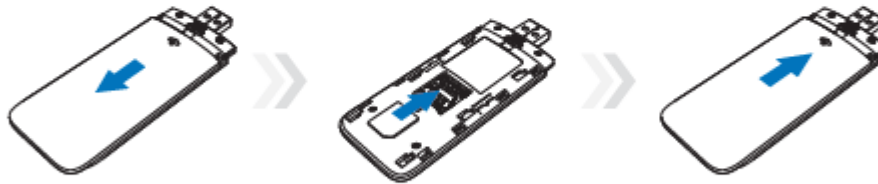
## Specification

<b>Colour</b>	Gray
<b>Dimensions</b>	102.3mm x 40mm x 10mm
<b>Weight</b>	~35g
<b>Peak rate</b>	CAT4 DL 150Mbps, UL 50Mbps
<b>WiFi</b>	802.11 b/g/n 2.4G
<b>WiFi users</b>	Max 8 connected users

## Guidance for product use

### 1. Install SIM card (optional)

- ① Remove the back cover of the device.
- ② Insert the SIM card into the card holder in the direction indicated by the notch. Make sure the SIMcard is fully embedded.
- ③ Close the back cover.



#### Notes:

- Supported SIM card is Micro SIM card (3FF).
- VSIM technology is supported and does not require a physical SIM card to be inserted for use. When using VSIM technology, you need to order data package from SP (Service Provider) when you purchase the device. If your SP also provides online shopping for data package, please scan the QR code on the internal lab.

### 2. Connect to network

- ① When the TD10 is plugged into a USB port on your computer, it is automatically recognized and configured, providing you with internet access.
- ② When the TD10 is plugged into the computer USB port, in addition to the use of this computer, it can also be shared for other devices through WiFi. Or when the TD10 is plugged into a rechargeable battery or car charging port through USB, it can provide WiFi service for other devices such as cell phones, PAD etc.
- ③ Enter the WiFi setup interface on cell phone or PAD, select the SSID of the TD10 from the list of WLANs that can be selected, and enter TD10' WiFi password to connect.

## Guidance for product use

### 3. Purchase of traffic package and query of package usage (optional)

If you purchase a TD10 device with a monthly or annual traffic package from an SP (Service Provider), no additional purchase is required. If the SP offers online purchase of the package, scan the QR code on the internal label of the device (which is also printed on the box label) with your cell phone, visit the SP's online store, select the suitable data package and complete the payment.

You can also check the traffic usage of the currently used package by visit the URL in QR code mentioned above.

### 4. Change WiFi SSID and password (optional)

If you want to change the WiFi SSID and password, please first connect your computer to TD10 via USB or your cell phone connect with the WiFi of TD10, then use your browser to visit the address <http://192.168.100.1>, default user name: `admin`, default password: `admin`, and then you can change the WiFi SSID and password on the administration webpage.

### 5. Restore factory settings (optional)

If you forget the settings you made earlier (e.g. WiFi password), you can choose to restore the factory settings. Press and hold RESET for 2 seconds to restore factory settings successfully.

## Quick troubleshooting

### 1. Can not access to TD10's WiFi network

Please check whether the selected SSID is the same as the WiFi SSID of TD10, and check whether the entered WiFi password is correct.

### 2. Connected to TD10 WiFi but can't access internet

Check the TD10 network indicator. When the indicator is red, it indicates a network failure, please check if you have a suitable data package. When the indicator light is yellow, it indicates weak network signal, please change the location and try again. When the white light is flashing, the device is undergoing firmware upgrade, please wait patiently for the firmware upgrade to complete. Please do not cut off the power of the device during the firmware upgrade process, and the device will automatically restart and provide service after the upgrade is completed.

## Precautions

1. please do not wrap or seal the equipment, do not cover it with towels and other items to avoid poor heat dissipation leading to equipment failure and affecting normal use.
2. Please avoid the equipment being exposed to moisture or rain.
3. Do not place equipment close to fire sources or exposed heat sources, such as electric heaters, microwaves, ovens, etc.
4. Do not subject this equipment to violent shocks and vibrations to avoid the resulting damage.
5. Disconnect from the power supply and other equipment before cleaning.
6. Do not use strong chemicals, and strong detergents to clean this device, please use a clean and dry towel to clean.
7. This device is not a toy, this device should be used by children under adult supervision.
8. Do not let children to swallow or tear this device.
9. Please do not dispose of this device and accessories as ordinary household garbage.
10. Please comply with local ordinances for the disposal of this equipment and accessories, and support recycling initiatives.

## Name and Element of the Toxic and Harmful Substances or Elements in the Products

Name of part	Harmful substances					
	Plumbum (Pb)	Mercury (Hg)	Cadmium (Cd)	Hexavalent chromium (Cr6 <sup>+</sup> )	Polybrominated biphenyls (PBB)	Polybrominated Biphenyl Ether (PBDE)
Wireless data terminals	○	○	○	○	○	○
Accessories	○	○	○	○	○	○

This Table is formulated in line with the SJ/T 11364.

○ indicates that the content of this hazardous substance in all homogeneous materials of this component is below the limit prescribed in GB/T 26572.

✕ indicates that the content of this hazardous substance in a homogeneous material of this component at least exceeds the limit prescribed in GB/T 26572.

### Disclaimer:

Please be aware that if you do not use the device in accordance with this User Guide, we assume no responsibility.

## FCC Warning

### **FCC Requirement**

Any changes or modifications not expressly approved by the party responsible for compliance could void the user's authority to operate the equipment.

This device complies with part 15 of the FCC Rules. Operation is subject to the following two conditions:

- (1) This device may not cause harmful interference, and
- (2) this device must accept any interference received, including interference that may cause undesired operation.

Note: This equipment has been tested and found to comply with the limits for a Class B digital device, pursuant to Part 15 of the FCC Rules. These limits are designed to provide reasonable protection against harmful interference in a residential installation. This equipment generates uses and can radiate radio frequency energy and, if not installed and used in accordance with the instructions, may cause harmful interference to radio communications. However, there is no guarantee that interference will not occur in a particular installation. If this equipment does cause harmful interference to radio or television reception, which can be determined by turning the equipment off and on, the user is encouraged to try to correct the interference by one or more of the following measures:

- Reorient or relocate the receiving antenna.
- Increase the separation between the equipment and receiver.
- Connect the equipment into an outlet on a circuit different from that to which the receiver is connected.
- Consult the dealer or an experienced radio/TV technician for help.

The device has been evaluated to meet general RF exposure requirement.