

**iGPSPORT®**

**VS1200**  
SMART FRONTLIGHT  
USER MANUAL



CN/GB/PT/ES/JP/IT/PL/RU/KR

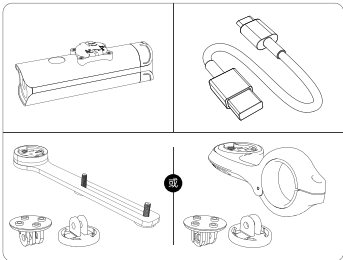
**iGPSPORT®**

**iGPSPORT®**

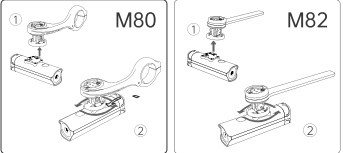
设备简介



配件/结构



安装图解



车灯模式

车灯模式	亮度 (流明)	亮灯方式	续航时间 (小时)
高常亮	1200	常亮	1.75
中常亮	600	常亮	4
自定义	300 (默认值)	常亮 (默认)	8
高亮闪烁	800/400/0	闪烁	30
低亮闪烁	300/100/0	闪烁	70
待机	/	/	/

\*以上数据均按照ANSI/NEMA FL 1-2009进行标准测试，实际结果可能会因外部温度和通风条件有所差异。

- 单击按键切换灯光模式，也可通过GPSPORT码表和APP调节；
- 首次开机/重置设备，开机默认“中常亮”模式；
- 模式切换顺序：高常亮-中常亮-自定义-高亮闪烁-低亮闪烁-待机；
- 模式记忆：开机自动选择上次关机前模式。

性能参数

主机尺寸	108*31*29mm
主机重量	约155g
最大亮度	1200流明
侧向可见角度	220°
有效射程	150m
电池容量	5000mAh
防水等级	IPX6

特色功能

自动休眠/唤醒	静止一定时间(可在APP设置)后自动进入休眠状态，恢复运动或按键唤醒
智能光感	通过车灯或码表的光照传感器感知环境亮度，高亮度环境下自动关闭灯光，低亮度时自动开启
同步关机	连接码表时，跟随码表同步关机
可用续航估算	车灯根据当前模式和电量估算可用续航时间，并在码表/APP上显示
功率保护	车灯在充电、反向充电、高温、长时间静止(关闭自动休眠)等状态下，自动进入功率保护，调低亮度以保护设备
反向充电	可作为充电宝为手机、运动相机、码表等充电
自定义模式	可在APP上编辑自定义模式的亮度、亮灯方式等参数

蓝牙无线连接操作流程

打开VS1200——打开GPSPORT APP——点击最下方四个图标中的“设备”，进入蓝牙连接页面——点击设备管理页面中间的“添加设备”；或者右上角的“+”——选择“配件产品”——点击信号最强的VS1200并连接——自动返回“设备”页面——最上方显示VS1200已连接，即表示连接成功

蓝牙无线连接智能功能操作流程

蓝牙无线连接操作完成——“可用时间”可显示当前模式下剩余可用时间——“车灯模式”可任意切换各个模式——“自定义模式编辑”可自行定义亮灯模式(包含呼吸、闪烁、常亮)及相应间隔时间、亮度等——“智能功能配置”可配置码表同步关机、自动休眠、智能光感三种智能功能——“固件检测”可升级版本。

\*本产品可以适配并安装到自行车、头盔等户外骑行设备上，为多种骑行运动场景提供稳定可靠的照明服务。

\*不要注视亮着的光源。



规格认证

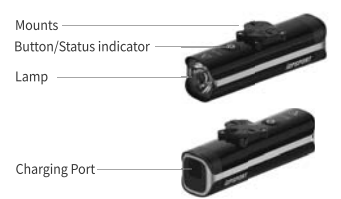


了解更多

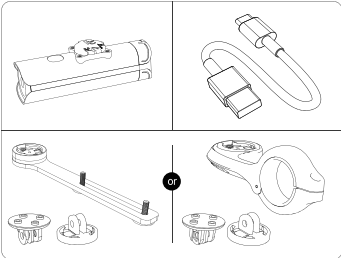
请扫描二维码下载GPSPORT APP，解锁更多功能体验；



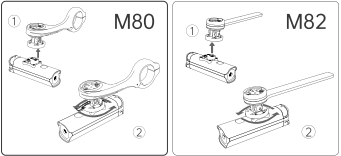
DEVICE INTRODUCTION



ACCESSORY/STRUCTURE



HOW TO INSTALL



LIGHT MODES

Light Modes	Brightness (Lumens)	Flashing Mode	Battery life (hours)
High Brightness Steady	1200	steady	1.75
Medium Brightness Steady	600	steady	4
Custom	300 (default)	steady(default)	8
High Brightness Flash	800/400/0	flash	30
Low Brightness Flash	300/100/0	flash	70
Standby	/	/	/

- \*The above data are tested in accordance with the ANSI/NEMA FL 1-2009 standard, and actual results may vary depending on outside temperature and ventilation conditions.
- One-click button to switch the light mode, which can also be adjusted through the IGSPORT computer and APP.
  - Default mode is "Medium Brightness Steady" when first powering on or resetting the device.
  - Lighting modes switching sequence: High Brightness Steady, Middle Brightness Steady, Custom, High Brightness Flash, Low Brightness Flash, and Standby.
  - Mode memory: The device automatically selects the mode used before the last shutdown when powering on.

PERFORMANCE SPECIFICATIONS

Device Size	108*31*29mm
Device Weight	155g
Max Brightness	1200 Lumens
Lateral Visibility Angle	220°
Effective Range	150m
Battery Capacity	5000mAh
Waterproof	IPX6

\*The data about brightness and beam range is tested according to ANSI/NEMA FL 1-2009 standard.

SPECIAL FEATURES

Auto-sleep/ wake up	After stationary for a certain period of time (can be set in the APP), it will automatically enter the sleep state, and can be waken up by movement or button.
Intelligent light sensing	Sensing the ambient brightness via the built-in light sensor of light or bike computer; it automatically turns off the light in high brightness conditions and turns it on in low brightness.
Synchronous shutdown	The device can shutdown synchronously by connected bike computer.
Estimation of Available Battery Life	The device estimates the available battery life based on the current mode and battery level, and displays it on the computer/APP.
Power Protection	The device automatically enters power protection status in conditions such as charging, reverse charging, high temperature, and prolonged static state (Auto-Sleeping function disabled), reducing brightness to protect the device.
Reverse Charging	The device can be used as a power bank to charge cellphones, bike computers and sports cameras.
Custom mode	The parameters such as brightness and flashing pattern for the Custom Mode can be edited in the IGSPORT APP.

Bluetooth connection process

Power on VS1200 - open the IGSPORT APP - Click on the "Device" from four icons in the bottom, enter the Bluetooth connection page - Choose "add a device" from the device management page, or "+" of the upper-right corner - select the "Accessories" - Select the VS1200 of the strongest signal and connect - then automatically return to the "Device" page - The connection is successful when it shows VS1200 has been connected.

Bluetooth connection Intelligent functions operation method

After bluetooth connection completed - "Duration Of Use" can tell the remaining available time in current mode - "Frontlight Mode" means you can switch different modes - "Custom mode editing" brightness, the corresponding interval and light mode can be customized, including breathing, flash, constant brightness. - "Intelligent function configuration" can be configured in 3 sections, including synchronized shutdown, automatic hibernation, and Intelligent light sensing - "Firmware Detecting" for upgraded versions.

\*Don't stare at the lighting source.



SPECIFICATIONCERTIFICATION

**SRRC** **CE**   **FC** **RoHS**

GET MORE

Please visit "www.igpsport.com/cycling-app" and download IGSPORT APP to unlock more experience.

FCC WARNING

This device complies with part 15 of the FCC Rules. Operation is subject to the following two conditions: (1) this device may not cause harmful interference, and (2) this device must accept any interference received, including interference that may cause undesired operation.

Any changes or modifications not expressly approved by the party responsible for compliance could void the user's authority to operate the equipment.

NOTE: This equipment has been tested and found to comply with the limits for a Class B digital device, pursuant to Part 15 of the FCC Rules. These limits are designed to provide reasonable protection against harmful interference in a residential installation. This equipment generates, uses and can radiate radio frequency energy and, if not installed and used in accordance with the instructions, may cause harmful interference to radio communications. However, there is no guarantee that interference will not occur in a particular installation. If this equipment does cause harmful interference to radio or television reception, which can be determined by turning the equipment off and on, the user is encouraged to try to correct the interference by one or more of the following measures:

- Reorient or relocate the receiving antenna.
- Increase the separation between the equipment and receiver.
- Connect the equipment into an outlet on a circuit different from that to which the receiver is connected.
- Consult the dealer or an experienced radio/TV technician for help.

The device has been evaluated to meet general RF exposure requirement. The device can be used in portable exposure condition without restriction

RF Specification

Operation Frequency: 2402-2480MHz  
Max RF outputpower(CET): 2.47dBm for BLE 1M; 2.3dBm for BLE 2M

EU Declaration of Conformity

We, Wuhan Qiwu Technology Co., Ltd. (3 / F, Creative workshop, No.04, District D, Creative world, No.16 Yezhihu West Road, Hongshan District, Wuhan City, Hubei Province, China.) hereby declares that this iGPSORT VS1200 Smart Frontlight is in compliance with the essential requirements and other relevant provisions of Directive 2014/53/EU.

According to Article 10(2) of Directive 2014/53/EU, the VS1200 can be used in Europe without restriction.

Applicant's name: Wuhan Qiwu Technology Co., Ltd.  
Address: 3 / F, Creative workshop, No.04, District D, Creative world, No.16 Yezhihu West Road, Hongshan District, Wuhan City, Hubei Province, China.  
Manufacturer's Name: Wuhan Qiwu Technology Co., Ltd.  
Address: 3 / F, Creative workshop, No.04, District D, Creative world, No.16 Yezhihu West Road, Hongshan District, Wuhan City, Hubei Province, China.

