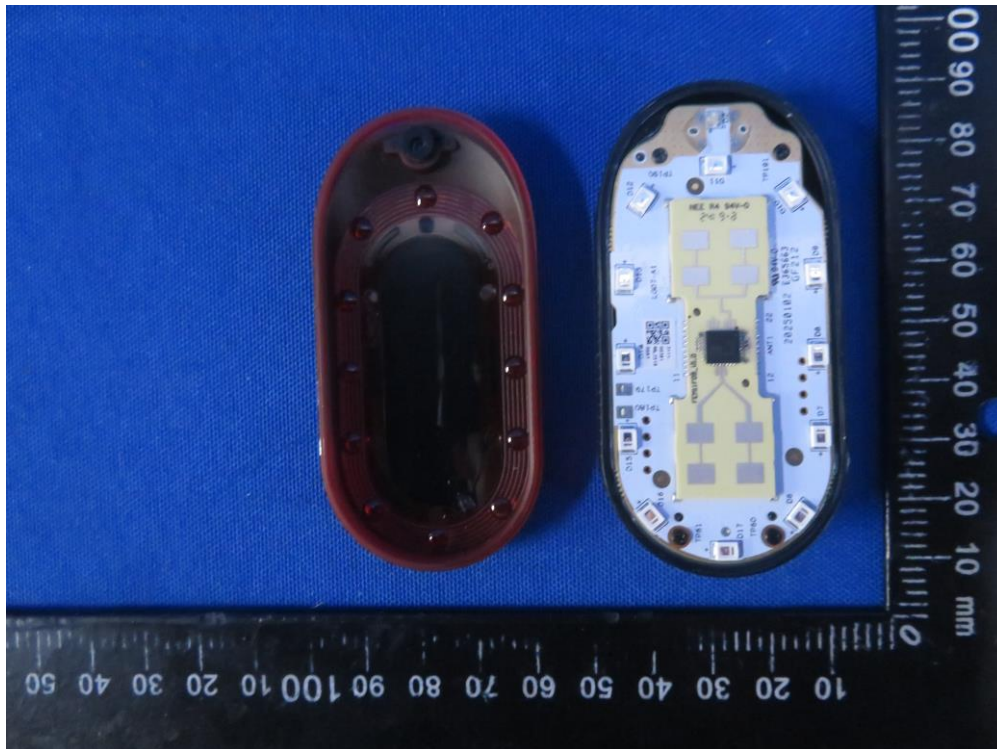
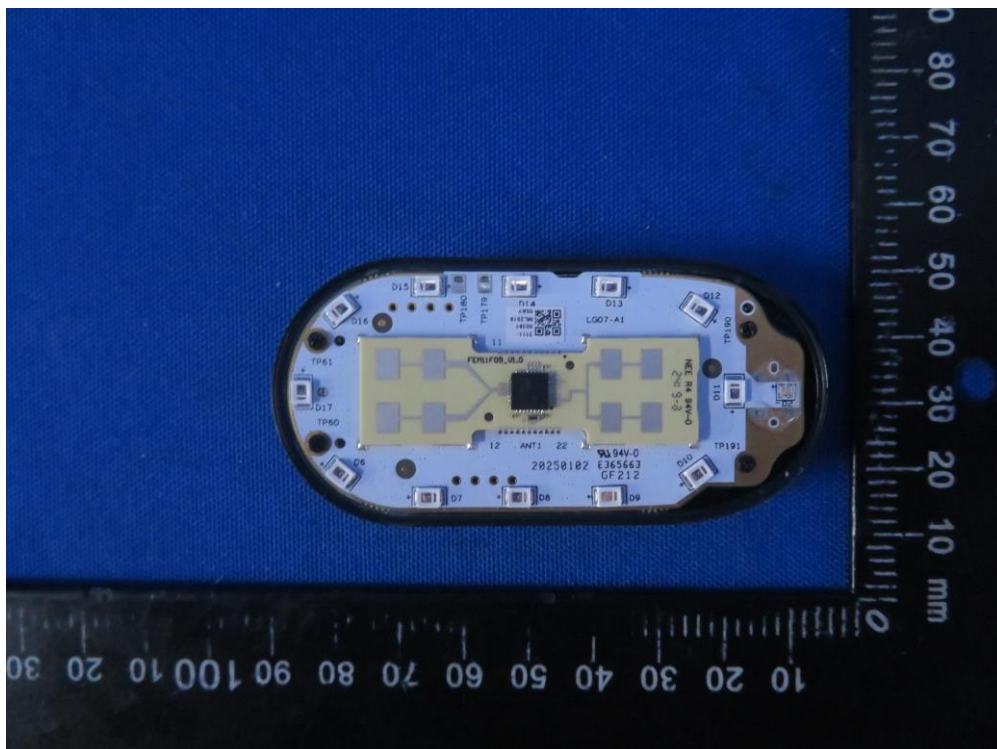


Internal EUT Photograph

(1) EUT Photo



(2) EUT Photo



The image shows a white, oval-shaped electronic component, likely a mobile phone antenna, mounted on a blue circuit board. The component features a central black chip labeled "FEM1F08_V1.0" and "20250102". It has multiple gold-plated contacts labeled D1 through D19, TP1 through TP19, and D14. A QR code is visible near the center. The component is secured with screws.

(5) EUT Photo

