

User Manual

ProConnected Smoke Alarm

Model: XS03-iWX

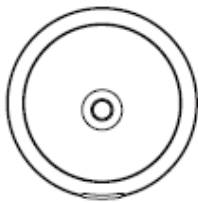


Thank you for purchasing the X-Sense XS03-iWX smoke alarm! This user manual contains important information on how to install and operate the smoke alarm. Please read the user manual before installing or operating the device, and save it for future reference.

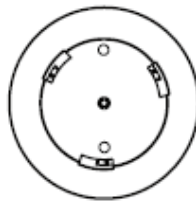
Introduction

The X-Sense XS03-iWX smoke alarm monitors for smoke concentration and can be interconnected with other devices of the same type (XS03-iWX). It needs to be paired with the X-Sense SBS10 base station because the smoke alarm and base station will both alarm once triggered. For added safety, the smoke alarm itself can act as a siren if the base station is disconnected.

What's in the Box



Alarm Unit × 1



Mounting Bracket × 1



Screw × 2



Anchor Plug × 2



User Manual × 1

- Alarm Unit × 1
- Mounting Bracket × 1
- Screw × 2
- Anchor Plug × 2
- User Manual × 1

Safety Information

Please pay careful attention to the warnings and cautions on installation, operating instructions, and potential hazards.

IMPORTANT

1. This device is not designed for hearing-impaired people. The use of alcohol or drugs may impair one's ability to hear the smoke alarm.
2. Fires in chimneys, walls, roofs, or behind closed doors may not be detected.
3. This device is not intended for detecting flames, heat, carbon monoxide, or other hazardous gases.

WARNING

1. Never ignore an alarm. Failure to respond can result in serious injury or even death.
2. The silence feature is only for your convenience and will not correct a problem. Always check your home for any potential hazards every time an alarm sounds.
3. Test your smoke alarm once a week. If the alarm fails to test correctly, replace it immediately! If the alarm is not working properly, it will not alert you to a problem.

Device Setup

Sign In

Scan the QR code below or search for **X-Sense Home Security** in the Apple App Store or Google Play Store to download the app. Sign in with a valid email address. If you already have an account, make sure the app is updated to the latest version.



Apple App Store



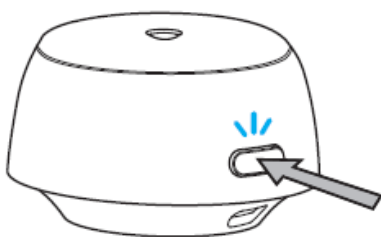
Google Play Store

Add a Smoke Alarm

Before adding this smoke alarm, make sure:

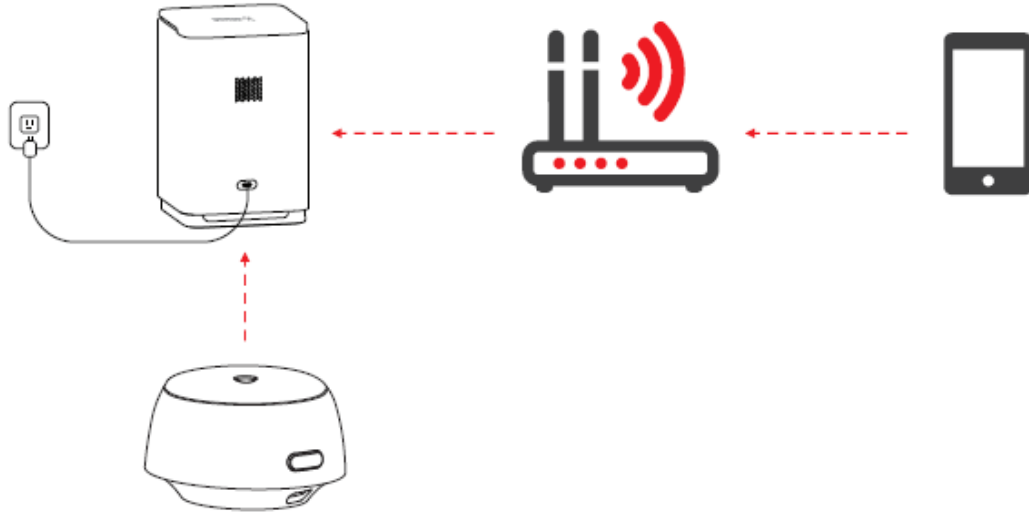
- You have a stable, uninterrupted 2.4 GHz Wi-Fi network. If your router supports a dual-band network with both 2.4 GHz and 5 GHz, please create separate SSIDs for the two channels. The base station is only compatible with the 2.4 GHz channel.
- You have added a base station in the app, or else the app will prompt you to add a base station first before adding this smoke alarm.
- You enable Bluetooth services on your smartphone.
- The base station has a stable connection by placing it within the router's range.

1. Tap the + button in the app, then choose **ProConnected Smoke Detector**.
2. Remove the back cover from the device and scan the device's QR code.
3. Remove the insulating film to supply power and follow the in-app instructions to finish adding the smoke alarm. Once done, you will see **Device Added** in the app.
4. To interconnect devices, repeat the steps above to add devices. When done, they will be automatically interconnected.



Note:

The LED indicator has been combined with the Test/Silence button on the device. When you press the Test/Silence button, note that your finger could cover the button so that you may not be able to see the indicator light.



Set Up a Smoke Alarm

Once you add the smoke alarm to the system, you will need to set it up within the app by naming the device, selecting the room in which it is installed, and enabling notifications from the app.

Device Self-Check

Tap **Self-Check** in the app so the device performs a self-test of its electronics and circuits. The device will beep three times and the LED indicator will flash red, then it will return to standby mode.

Push Notifications

Enable push notifications from the app to receive alerts of any changes to the system. It is recommended that you limit your notifications to specific ones that you would like to receive, so you won't get too many of them and it becomes bothersome.

Note:

Offline Notification

If the alarm becomes disconnected from the base station, you will see "Offline" on the app's device list and receive a push notification. Note that the offline notification may not be sent instantly, as the alarm reports to the base station at set intervals.

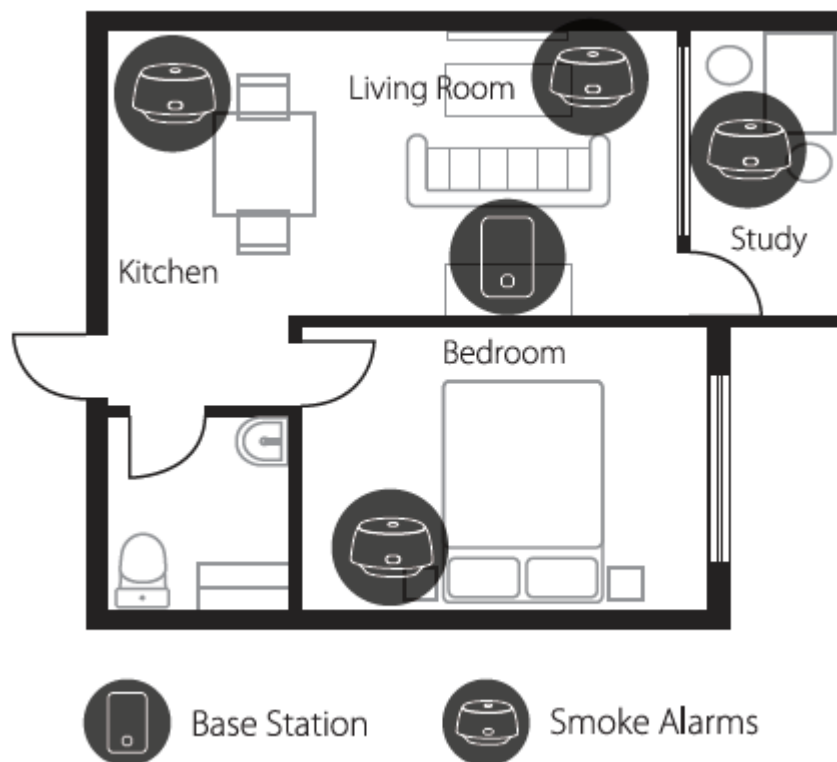
Record History

To access data or check device status, tap **History** on the bottom of the app.

Location and Installation

Fire Safety Layout

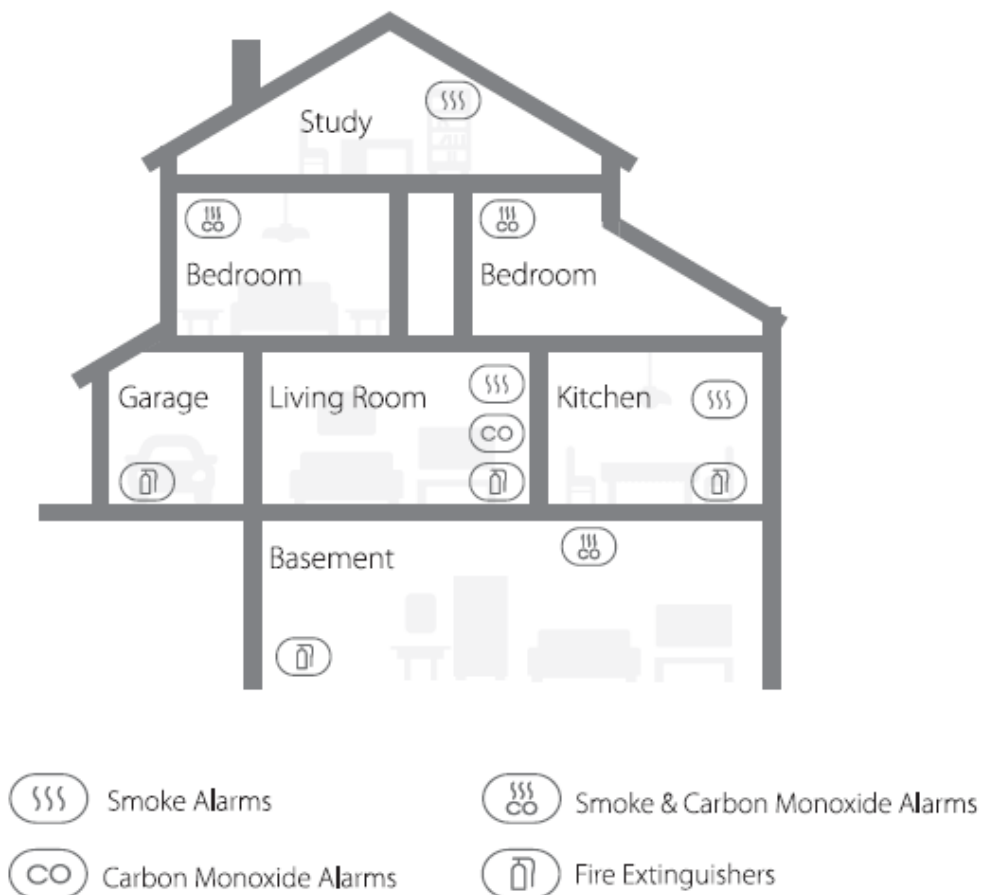
Follow the example diagram below or design your own layout to create a home fire safety system. Note that the base station needs to be placed in the center of the house so all devices stay well within its range.



Study
Bedroom
Garage
Living Room
Kitchen
Basement
Smoke Alarms
Smoke & Carbon Monoxide Alarms
Carbon Monoxide Alarms
Fire Extinguishers

Installation Positioning

1. Prioritize the installation of an alarm in bedrooms and walkways, and make sure you can hear the alarm from all sleeping areas. In homes with multiple bedrooms, install an alarm in every bedroom. If you only install one smoke alarm in your home, install it close to all bedrooms where possible, and not in a basement or furnace room.
2. Install an alarm above stairways and on every floor of the house.
3. Smoke, heat, and anything burning will spread horizontally after rising to the ceiling, so install the alarm in the middle of the ceiling where possible.
4. If an alarm cannot be installed in the middle of a ceiling, install it at least 20 inches (50 cm) away from all corners of a room.
5. If an alarm is installed on a wall, keep it between 4-12 inches (10-30 cm) below the ceiling.
6. If a room or hallway is longer than 30 feet (9 m), install multiple alarms in that room.
7. When the wall or ceiling is angled, the alarm needs to be installed within 3 feet (90 cm) of the highest wall or ceiling point (measured horizontally) in the room.
8. To maintain a secure and stable Wi-Fi connection, install the alarm within the router's coverage area and make sure that there are as few obstacles between them as possible.



Note:

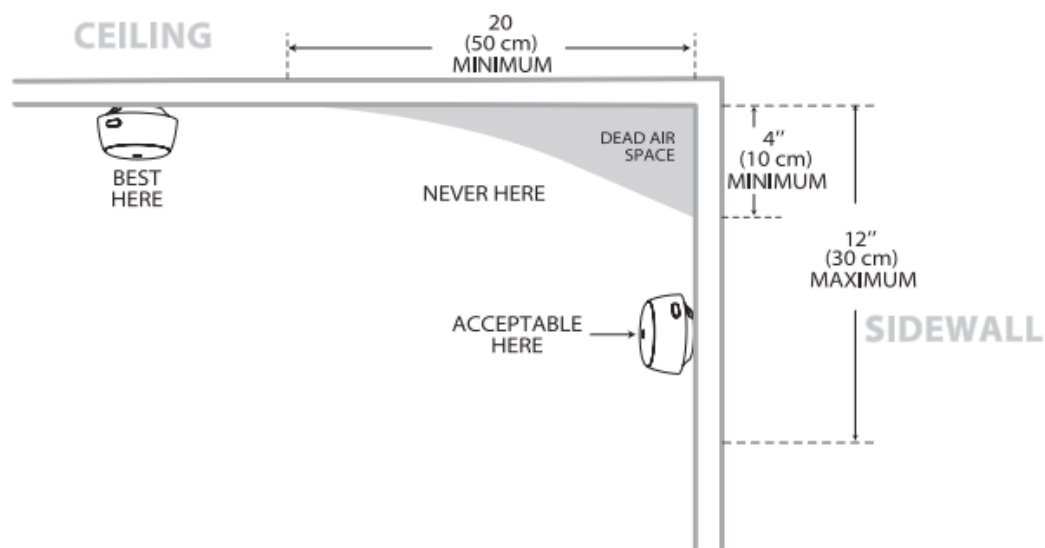
For smoke alarms installed in a kitchen, ensure you are able to access the Silence button, and place it at least 5 feet (1.5 m) away from potential smoke or fume sources, such as cooktops and ovens.

Placement on the Ceiling or Wall

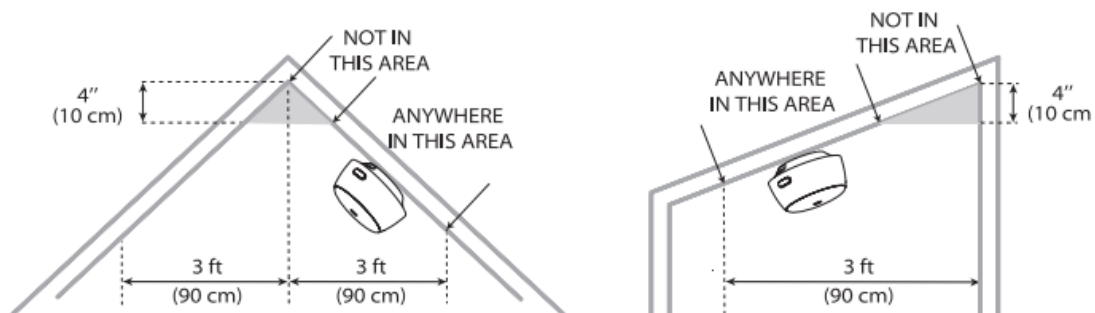
It is highly recommended that you install the alarm centered on the ceiling, as this enables the alarm to detect the first traces of smoke when smoke rises. If you can't do this, place the alarm at least 20 inches (50 cm) from the corners.

If you install the alarm on a wall, place it at least 4 inches (10 cm) from the highest point. Keep the device at least 5 feet (1.5 m) from potential smoke or fume sources such as stoves, furnaces, water heaters, and space heaters.

Make sure the alarm is installed within range of the router and that nothing is preventing smoke from reaching the alarm.



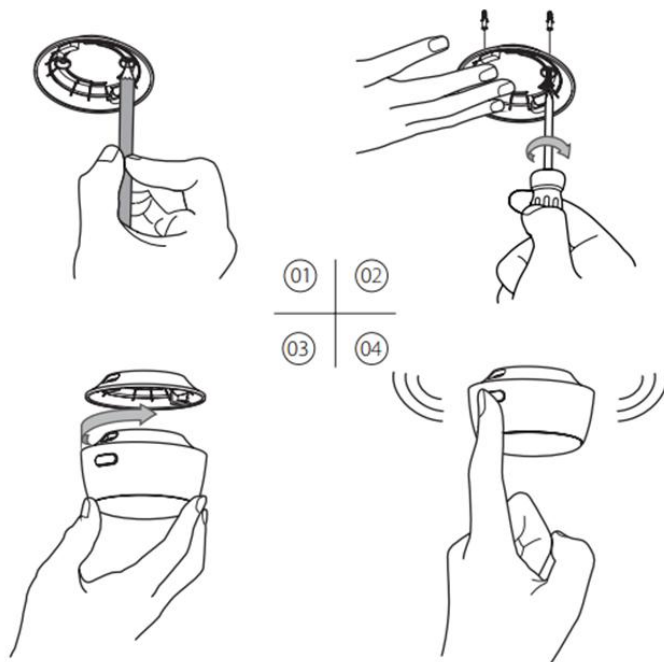
If installing the alarm on an A-frame or sloped ceiling, place it between 4-35 inches (10-90 cm) from the highest point.



Installation

Before installation, test the device to make sure it is functioning properly within the router's range, then install the smoke alarm as follows:

1. Mark holes on the ceiling or wall using the mounting bracket as a guide.
2. Drill holes at the two marked positions with a drill bit. Insert the anchor plugs, then attach the mounting bracket using the provided screws.
3. Attach the alarm to the mounting bracket, then turn clockwise to lock the alarm.
4. Test the alarm by pressing the Test/Silence button. The alarm should flash red three times with three short beeps.



Operating Instructions

This alarm will inform you of any unusual conditions or emergencies using the colored LED indicator along with beeping patterns.

What to Do When an Alarm Sounds

If the ProConnected Smoke Alarm is the initiating alarm that is triggered, the base station will alarm, and you will see and hear:

	Initiating Alarm
LED Indicator	Flashes red three times.
Buzzer	Three beeps every four seconds.
App	Instant push notifications.

If the ProConnected Smoke Alarm is interconnected and triggered by another device, the base station will alarm, and you will see and hear:

	Not the Initiating Alarm
LED Indicator	<ul style="list-style-type: none">● Alternating flashes of red and green three times if a smoke alarm is triggered.● Flashes red four times and green once if a CO alarm is triggered.
Buzzer	<ul style="list-style-type: none">● Three beeps every four seconds if a smoke alarm is triggered.● Four beeps every 5.8 seconds if a CO alarm is triggered.
App	No push notifications.

Note:

If the smoke concentration drops below the alarm limit, the device will cease to alarm and return to standby mode. You will receive a notification from your smartphone, telling you that the alarm has ended.

How to respond to a smoke alarm:

1. Do not panic. Stay calm and follow your family's escape plan.
2. Get out of the house as quickly as possible. Don't stop to get dressed or collect anything.
3. Feel doors with the back of your hand before opening them.
4. If a door is cool, open it slowly. Never open a hot door. Keep doors and windows closed unless you must escape through them.
5. Cover your nose and mouth with a damp cloth.
6. Take short, shallow breaths.
7. Gather at a predetermined meeting place outside your home. Once outside, perform a headcount to make sure everybody get out safely.
8. Call the Fire Department as soon as possible from outside. Give your address, then your name.
9. Never go back inside a burning building for any reason.

10. Contact your Fire Department for ideas on making your home safer.

Using the Silence Function

Tap **Silence** in the app to temporarily silence the base station and all interconnected devices. However, during an alarm, the initiating alarm will keep sounding. To silence this alarm, tap **Silence** on its Device Settings interface. Its LED indicator will flash red every five seconds, indicating the device is temporarily silenced. When the 9-minute silence duration passes, the device will return to normal operation.

Alternatively, press the Test/Silence button on the triggered device to temporarily silence all devices, including the base station, the triggered smoke alarm, and other interconnected devices. To locate the initiating alarm, press the Test/Silence button on any device; if all devices are silenced except for one device, then the device still alarming is the initiating device.

Note that the silence function will only silence the alarm for a short period. It will not correct any problems.

Device Status Checklist

Device Status		LED Indicator	Buzzer	Note
Standby Mode		Flashes red once every 60 seconds.	/	/
Device Connection		Flashes green.	/	/
Device Test		Flashes red three times.	Three short beeps.	/
Alarm	Triggered as the initiating alarm	Flashes red three times.	Three beeps every four seconds.	You will receive a smoke alarm notification from the app.
	Interconnected and triggered by another device	Flashes red and green in sequence three times.	Three beeps every four seconds.	Smoke alarm.
		Flashes red four times and green once.	Four beeps every 5.8 seconds.	CO alarm.
Silence Function		Flashes red once every five seconds.	/	You will receive a silence notification from the app.
Low Battery Warning		Flashes red once every 60 seconds.	One beep every 60 seconds.	You will receive a low battery notification from the app.
Malfunction		Flashes red twice every	Two beeps every 40	You will receive a

	40 seconds.	seconds.	malfunction notification from the app.
--	-------------	----------	--

Technical Specifications

Power Supply	Replaceable 3 V CR123A lithium battery
Operating Life	10 years
Battery Life	1 year
Sensor Type	Photoelectric
Safety Standards	UL 217
Coverage Area	1640 feet (500 m) in open air
Operating Temperature	40–100 °F (4.4–37.8°C)
Operating Relative Humidity	≤ 85% (non-condensing)
Alarm Volume	≥ 85 dB at 10 ft (3 m) @ 3.2 ± 0.3 kHz pulsing alarm
Silence Duration	About 9 minutes
Operating Frequency	914.8 MHz
App	X-Sense Home Security (both Android and iOS supported), works with X-Sense base station SBS10

Maintenance

General Maintenance

Follow the steps listed below for optimum long-term performance:

- Test the device once a week by pressing the Test/Silence button, ensuring the device functions properly. Note that this only tests the electronics in your alarm rather than for smoke.
- Clean the alarm every three months. Remove the device from the ceiling or wall and clean the cover and vents with a soft, damp cloth. Be sure to properly reinstall the device after cleaning.
- Do not clean the device with detergents or solvents, and do not spray air fresheners or hair spray near the device, as these may lead to a malfunction.
- Do not paint the device, because it will seal the vents and reduce the sensitivity of the smoke sensors.
- Do not tamper with this device, since this may lead to electrical shock or malfunction.
- Do not disassemble the device to clean the interior. Doing so will void your warranty.

Weekly Test

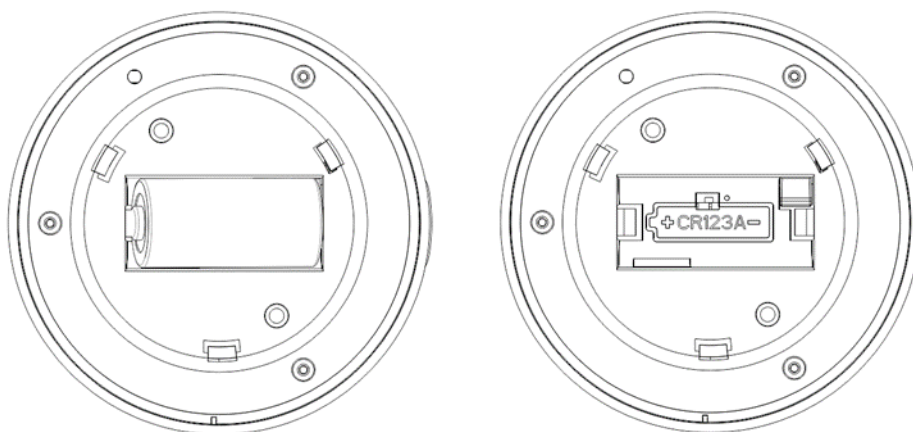
Test the alarm when you turn on the device for the first time, once a week, and every time you replace the battery or reconfigure the device.

To test the alarm, press the Test/Silence button or tap **Self-Check** within the app. The device should beep three times. Be careful to not hold down the Test/Silence button longer than three seconds, because the smoke alarm will re-enter the pairing process.

Note that this will only test the electronics. If the device fails to deliver an audible test signal, please refer to the Troubleshooting section.

Battery Replacement

1. Remove the smoke alarm from the mounting bracket by twisting the alarm counterclockwise.
2. Take out the old battery and install a new one, making sure to match the battery's polarities.
3. Test the alarm by pressing the Test/Silence button on the device.
4. Attach the alarm onto the mounting bracket by twisting clockwise until it is firmly secured.



Troubleshooting

Description	Problem	Solution
The device will not self-test when following the in-app instructions.	Dead batteries or improper operation	<ul style="list-style-type: none"> ● Check the battery. ● Firmly press the Test/Silence button.
False alarms are triggered when cooking or taking a shower.	Improper installation location or maintenance	<ul style="list-style-type: none"> ● Avoid placing alarms near cooking appliances, dusty areas, showers, or any areas where the temperature drops below 40 °F (4.4 °C) or rises above 100 °F (37.8 °C). See the Location and Installation section. ● Clean the alarm every three months to avoid unwanted alarms caused by dust and dirt. See the Maintenance section.
The LED indicator flashes red once every 60 seconds with one beep.	Low battery warning.	Replace the battery immediately.
The LED indicator flashes red every 40 seconds with two beeps.	Malfunction	Clean your alarm to see if it is functioning properly. If not, replace the device immediately.

FCC Statement

This equipment has been tested and found to comply with the limits for a Class B digital device, pursuant to Part 15 of the FCC Rules. These limits are designed to provide reasonable protection against harmful interference in a residential installation. This equipment generates uses and can radiate radio frequency energy and, if not installed and used in accordance with the instructions, may cause harmful interference to radio communications. However, there is no guarantee that interference will not occur in a particular installation. If this equipment does cause harmful interference to radio or television reception, which can be determined by turning the equipment off and on, the user is encouraged to try to correct the interference by one or more of the following measures:

- Reorient or relocate the receiving antenna.
- Increase the separation between the equipment and receiver.
- Connect the equipment into an outlet on a circuit different from that to which the receiver is connected.
- Consult the dealer or an experienced radio/TV technician for help.

Changes or modifications not expressly approved by the party responsible for compliance could void the user's authority to operate the equipment.

This device complies with part 15 of the FCC Rules. Operation is subject to the following two conditions:

(1) This device may not cause harmful interference, and (2) this device must accept any interference received, including interference that may cause undesired operation.

Environmental Protection

Waste electrical products should not be disposed of with household waste. Please recycle where facilities exist. Check with local authorities or retailers for recycling advice.



Manufacturer and Service Information

X-Sense Innovations Co., Ltd.

Address: B4-503, Kexing Science Park, 15 Keyuan Road, Shenzhen, 518057, CHINA

Email: support@x-sense.com