

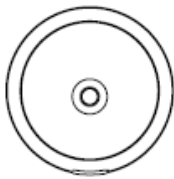
User Manual

XS03-WX Wi-Fi Smoke Alarm

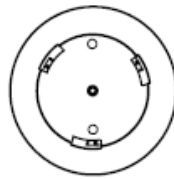


Thank you for purchasing this X-Sense XS03-WX Wi-Fi smoke alarm. This user manual contains important information on installing and operating this X-Sense Wi-Fi smoke alarm. Please read this user manual before installation or operation, and save it for future reference.

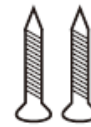
What's in the Box



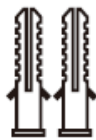
Alarm Unit x 1



Mounting Bracket x 1



Screws x 2



Anchor Plugs x 2



User Manual x 1

- Alarm x 1
- Mounting Bracket x 1
- Screws x 2
- Anchor Plugs x 2
- User Manual x 1

Safety Information

Dangers, warnings, and cautions alert you to important installation and operating instructions, or potential hazards. Please pay attention to the situations.

IMPORTANT

1. This device is not designed for hearing-impaired people. Use of alcohol or drugs may impair one's ability to hear the smoke alarm.
2. Fires in chimneys, walls, roofs, or behind closed doors may not be detected.
3. This device is not intended for detecting flames, heat, carbon monoxide, or other hazardous gases.

WARNING

1. Never ignore an alarm. Failure to respond can result in serious injury or even death.
2. The silence feature is only for your convenience and will not correct a problem. Always check your home for any potential hazards every time an alarm sounds.
3. Test this smoke alarm once a week. If the alarm fails to test correctly, replace it immediately! If the alarm is not working properly, it will not alert you to a problem.

Device Setup within the App

Sign Up

To download the app, search for **X-Sense Home Security** in the Apple App Store or Google Play Store, or simply scan the QR code below. Create an account using a valid email address. If you already have an account, make sure it is updated to the latest version.



Apple App Store



Google Play Store

Before adding a smoke alarm, make sure you have a stable and smooth 2.4 GHz Wi-Fi network and enable Bluetooth on your smartphone.

Due to different operating systems and regular version updates, your app may differ in appearance from the pictures shown below. If you have any problems during setup and operation, please contact our customer service.

Add a Smoke Alarm

Before adding a smoke alarm to the app, you need to activate it by removing the mounting bracket and pulling off the insulating film.

1. Tap **Add Device** in the app, then choose **Wi-Fi Smoke Detector**.

2. Enter a name for the smoke alarm, select the home you created or create a new home for this the smoke alarm, then select the room in which it is installed. If you create a new home, you will need to enter a name and select which country or region which you live.
3. Scan the QR code on the smoke alarm.
4. Remove the insulating film to power up the smoke alarm.
5. Press and hold the Test/Silence button on the smoke alarm for five seconds until it flashes blue. Immediately tap **Operation Confirmed** before the light goes off; or else you need to repeat the step to make the LED indicator flash blue.



6. Connect to a 2.4 GHz Wi-Fi network and make sure you enter the correct password. Then, the smoke alarm will enter the pairing process. Make sure the Test/Silence button (the LED indicator) is still flashing blue; or else you need to press it to make it flash blue again.
7. When finished, you will see the Wi-Fi smoke alarm displayed on the app, as shown below.

Note:

- If your router supports a dual band network with both 2.4 GHz and 5 GHz, please create separate SSIDs for the 2.4 GHz and 5 GHz channels. This device is only compatible with a 2.4 GHz Wi-Fi network.
- To promote successful Wi-Fi connection, make sure you place the alarm within the router range, and that you enter the correct password.

Set Up a Smoke Alarm

Push Notifications

You can choose to receive app push notifications when any change is made to your system. It is highly recommended that you limit push notifications, as too many notifications can become redundant and load your phone, which can quickly become a nuisance. Furthermore, the more push notifications you allow, the more power your smoke alarm will consume, which will reduce battery life.

Record History

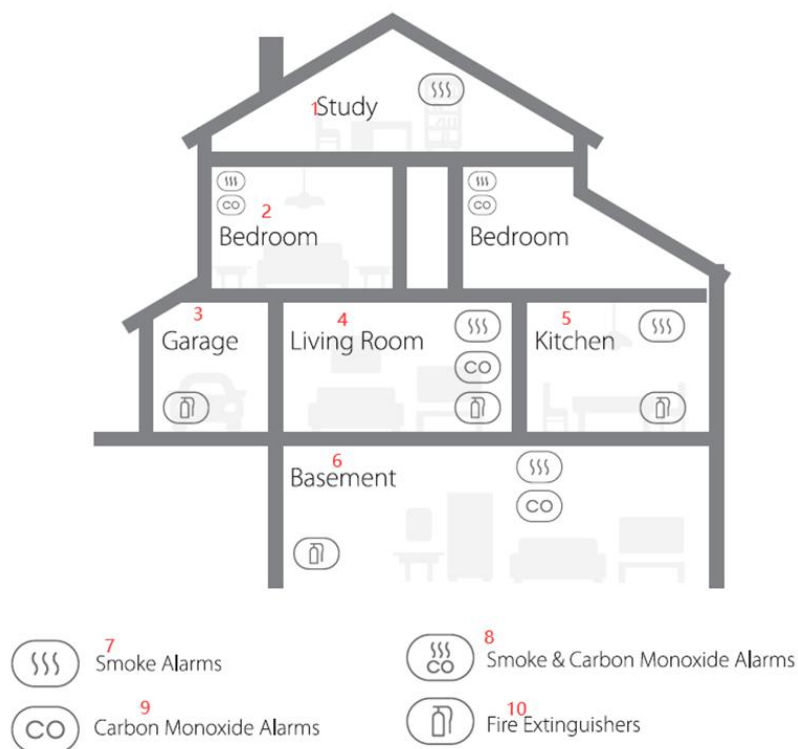
To access data or check device status, tap the **History** button on the bottom.

Offline Notifications

Offline notifications are used to notify you if the alarm disconnects from the Wi-Fi. Note that this notification may not be sent instantly, as the alarm reports to the base station at set intervals.

Location and Installation

Installation Positioning



Study

Bedroom

Garage

Living Room

Kitchen

Basement

Smoke Alarms

Smoke & Carbon Monoxide Alarms

Carbon Monoxide Alarms

Fire Extinguishers

1. Prioritize the installation of an alarm in bedrooms and walkways, and make sure you can hear the alarm from all sleeping areas. In homes with multiple bedrooms, install an alarm in every bedroom. If you only install one smoke alarm in your home, install it close to all bedrooms where possible, and not in a basement or furnace room.
2. Install an alarm above stairways and on every floor of the house.
3. Smoke, heat, and anything burning will spread horizontally after rising to the ceiling, so install the alarm in the middle of the ceiling where possible.
4. If an alarm cannot be installed in the middle of a ceiling, install it at least 20 inches (50 cm) away from all corners of a room.
5. If an alarm is installed on a wall, keep it between 4-12 inches (10-30 cm) below the ceiling.
6. If a room or hallway is longer than 30 feet (900 cm), install multiple alarms in that room.
7. If the wall or ceiling is angled, the alarm should be installed at least 3 feet (90 cm) away from the highest wall or ceiling point in the room.
8. To maintain a secure and stable Wi-Fi connection, install the alarm within the router's coverage area and make sure that there are as few obstacles between them as possible.

Note:

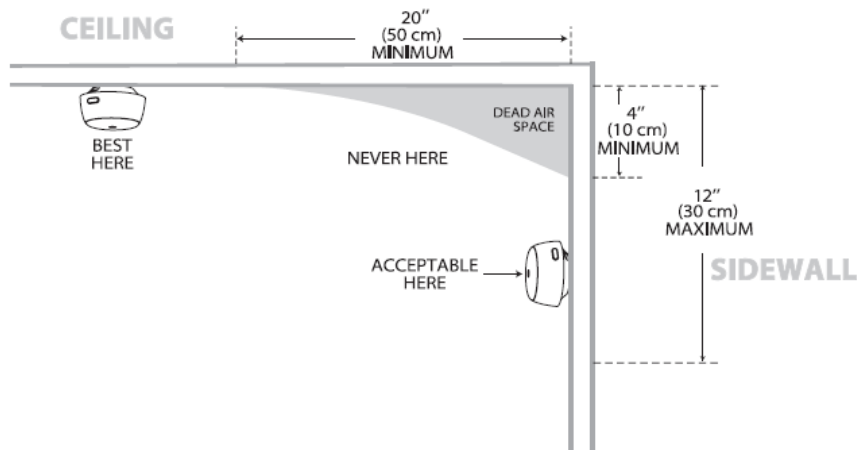
If you install a smoke alarm in a kitchen, place it at least 5 feet (1.5 m) away from potential smoke or fume sources, such as stoves and furnaces.

Placement on the Ceiling or Wall

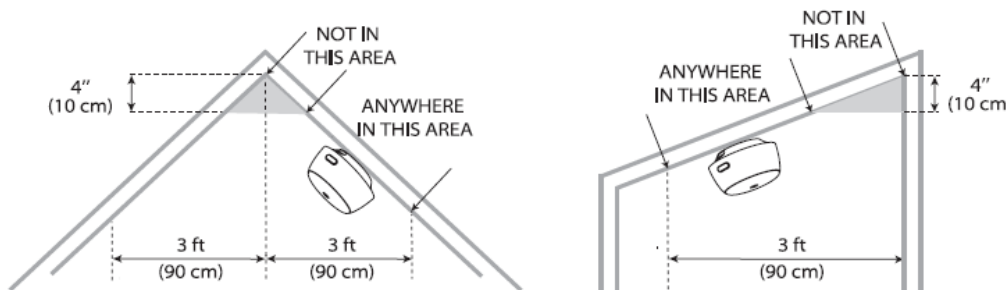
It is highly recommended that you install the alarm centered on the ceiling, as this enables the alarm to detect the first traces of smoke when smoke or heat rises. If you can't do this, place the alarm at least 20 inches (50 cm) from the corners.

If you install the alarm on a wall, place it at least 4 inches (10 cm) from the highest point. Keep the device at least 5 feet (1.5 m) from potential smoke or fume sources such as stoves, furnaces, water heaters, and space heaters.

Make sure the alarm is installed within range of the router and that nothing is preventing smoke from reaching the alarm.



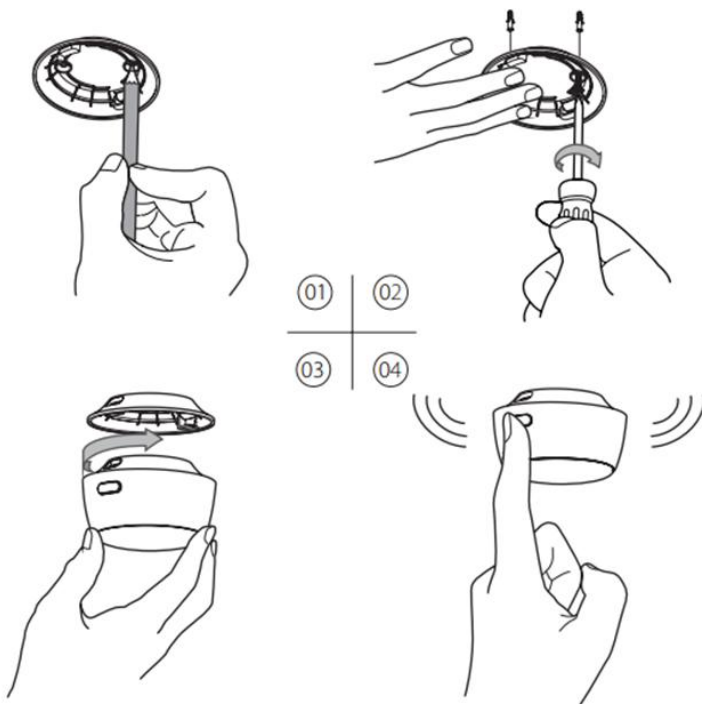
If you install the alarm on an A-frame or sloped ceiling, place it 4 inches (10 cm) below the highest peak.



Installation Procedures

Before installation, you will need to test the alarm, making sure it is functioning properly within the router's range. Then, install the alarm as follows:

1. Mark holes on the ceiling or wall using the mounting bracket as a guide.
2. Drill holes at the two marked positions with a drill bit. Insert the anchor plugs, then attach the mounting bracket using the provided screws.
3. Attach the alarm to the mounting bracket, then turn clockwise to lock the alarm.
4. Test the alarm by pressing the Test/Silence button. It should flash red three times, then blue, paired with three short beeps.



Operating Instructions

This alarm will inform you via a colored LED indicator and a beeping buzzer if there are any unusual conditions. Informing yourself of these conditions and indicators will allow you to take immediate action in the event of an emergency.

What to Do When an Alarm Sounds

If a smoke alarm is triggered, you will hear and see:

	Wi-Fi Smoke Alarm
Buzzer	Constant short beeps
LED Indicator	Flashes red once every second
App	Instant app push notification

How to respond to a smoke alarm:

1. Do not panic. Stay calm and follow your family's escape plan.
2. Get out of the house as quickly as possible. Don't stop to get dressed or collect anything.
3. Feel doors with the back of your hand before opening them.
4. If a door is cool, open it slowly. Never open a hot door. Keep doors and windows closed unless you must escape through them.
5. Cover your nose and mouth with a cloth (preferably damp).
6. Take short, shallow breaths.
7. Gather at a predetermined meeting place outside your home. Once outside, perform a head count to make sure everybody got out safely.
8. Call the Fire Department as soon as possible from outside. Give your address, then your name.
9. Never go back inside a burning building for any reason.
10. Contact your Fire Department for ideas on making your home safer.

Using the Silence Function

If there is a false alarm, you can temporarily silence it by pressing the **Silence** button on the app or by pressing the Test/Silence button on the device. The LED indicator will flash red once every five seconds and you will receive an instant notification from the app, telling you that the device has been temporarily silenced.

The silence duration usually lasts for nine minutes. After that, the device will return to standby mode, provided that the smoke concentration has dropped below the alarm level.

Note that the silence function will only silence the alarm for a short period. It will NOT correct any problems.

Device Status Checklist

Device Status	LED Indicator	Buzzer	Note
Standby Mode	Flashes red once every 60 seconds	/	/
Wi-Fi Connection	Flashes blue	/	/
Device Test	Flashes red three times, then blue	Three short beeps	/
Smoke Alarm	Flashes red once every second	Constant short beeps	You will receive a smoke alarm notification from the app.
Silence Function	Flashes red once every five seconds	/	You will receive a silence notification from the app.
Low Battery Warning	Flashes red once every 60 seconds	One beep every 60 seconds	You will receive a low battery notification from the app.
Malfunction	Flashes red twice every 40 seconds	Two beeps every 40 seconds	You will receive a malfunction notification from the app.

Technical Specifications

Power Supply	Replaceable 3 V CR123A lithium battery
Operating Life	10 years
Battery Life	1 year
Sensor Type	Photoelectric
Safety Standards	UL 217
Coverage Area	215–430 sq. ft (20–40 m ²)
Operating Temperature	40–100°F (4–38°C)
Operating Relative Humidity	≤ 85% (non-condensing)
Alarm Volume	≥ 85 dB at 3 m @ 3.2 ± 0.3 kHz pulsing alarm
Silence Duration	About 9 minutes
App	X-Sense Home Security (both Android and iOS supported)
Wireless Frequency	2.4 GHz (Incompatible with 5 GHz Wi-Fi network)
Wireless Protocol	IEEE 802.11b/g/n
Transmission Power	17 dBm

Note:

● B
atter
y life
is
calcu
lated
on
curr
ent
ratin
gs in
the
wee
kly
test
mod
e

and standby mode. If the operation mode changes to an alarming condition, the battery life will be decreased accordingly.

- This smoke alarm functions between 40–100°F (4–38 °C). Prolonged exposure to lower or higher temperatures can reduce battery life and affect device performance. We do not recommend operating the device outside of this temperature range.

Maintenance

General Maintenance

Follow the steps listed below for optimum long-term performance:

- Test the device once a week by pressing the Test/Silence button, ensuring the device functions properly. Note that this only tests the electronics in your alarm rather than smoke.
- Clean the alarm every three months. Remove the device from the ceiling or wall and clean the cover and vents with a soft, damp cloth. Be sure to properly reinstall the device after cleaning.
- Do not clean the device with detergents or solvents, or spray air fresheners or hair spray near the device, as these may lead to a malfunction.
- Do not paint the device, as it will seal the vents and reduce the sensitivity of the smoke sensors.
- Do not tamper with this device, as this may lead to electrical shock or malfunction.
- Do not disassemble the device to clean the interior. Doing so will void your warranty.

Weekly Test

Test the alarm once a week, when you turn on the device for the first time, and every time you replace the battery or reconfigure the device.

To test the alarm, press the Test/Silence button - the device should beep three times. If you hold down the Test/Silence button for longer than three seconds, the smoke alarm will re-enter the pairing process, and all previous settings will be erased.

Note that this will only test the electronics. If the device fails to deliver an audible test signal, please refer to the Troubleshooting section.

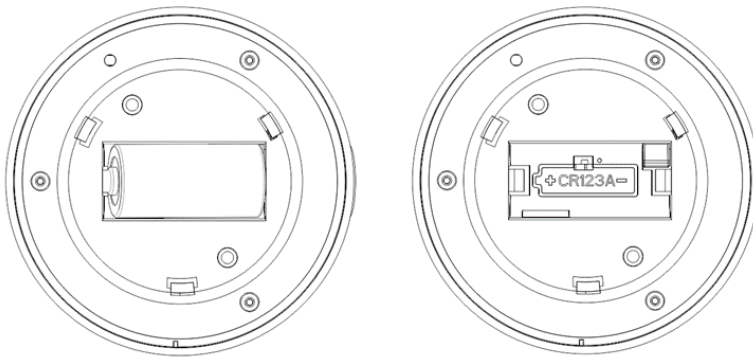
Battery Replacement

1. Remove the smoke alarm from the mounting bracket by twisting counterclockwise.
2. Take out the old battery and install a new one, making sure to match the battery's polarities.
3. Test the alarm by pressing the Test/Silence button on the device.
4. Attach the alarm onto the mounting bracket by twisting clockwise until it is firmly secured.

Note:

When you replace the battery, the LED indicator on the alarm will flash red once and blue for a few seconds, indicating the alarm is back online. If the LED indicator flashes blue for longer than

two minutes, you will need to re-add the alarm to the system by repeating the steps above.



Troubleshooting

Description	Problem	Solution
The device does not alarm during a test.	Dead batteries or improper operation	<ul style="list-style-type: none">● Check the battery.● Firmly press the Test/Silence button.
False alarms are triggered when cooking or taking a shower.	Improper installation location or maintenance	<ul style="list-style-type: none">● Avoid placing alarms near cooking appliances, dusty areas, showers, or any areas where the temperature drops below 40°F (4.4°C) or rises above 100°F (37.8°C). See the Location and Installation section.● Clean the alarm every three months to avoid unwanted alarms caused by dust and dirt. See the Maintenance section.
The LED indicator flashes red once every 60 seconds with one beep.	Low battery warning.	Replace the battery immediately.
The LED indicator flashes red every 40 seconds with two beeps.	Malfunction	Clean your alarm to see if it is functioning properly. If not, replace the device immediately.
The LED indicator flashes blue during a test, or the app shows the smoke	Wi-Fi Disconnection	Make sure the smoke alarm is installed within the router range and that there are no obstructions between the device and the

alarm as being "Offline".		router.
---------------------------	--	---------

FCC Statement

This equipment has been tested and found to comply with the limits for a Class B digital device, pursuant to Part 15 of the FCC Rules. These limits are designed to provide reasonable protection against harmful interference in a residential installation. This equipment generates uses and can radiate radio frequency energy and, if not installed and used in accordance with the instructions, may cause harmful interference to radio communications. However, there is no guarantee that interference will not occur in a particular installation. If this equipment does cause harmful interference to radio or television reception, which can be determined by turning the equipment off and on, the user is encouraged to try to correct the interference by one or more of the following measures:

- Reorient or relocate the receiving antenna.
- Increase the separation between the equipment and receiver.
- Connect the equipment into an outlet on a circuit different from that to which the receiver is connected.
- Consult the dealer or an experienced radio/TV technician for help.

Changes or modifications not expressly approved by the party responsible for compliance could void the user's authority to operate the equipment.

This device complies with part 15 of the FCC Rules. Operation is subject to the following two conditions:

(1) This device may not cause harmful interference, and (2) this device must accept any interference received, including interference that may cause undesired operation.

WARNING:

The distance between user and device should be no less than 20cm.

Environmental Protection

Waste electrical products should not be disposed of with household waste. Please recycle where facilities exist. Check with local authorities or retailers for recycling advice.



Manufacturer and Service Information

X-Sense Innovations Co., Ltd.

Address: B4-503, Kexing Science Park, 15 Keyuan Road, Shenzhen, 518057, CHINA

Email: support@x-sense.com