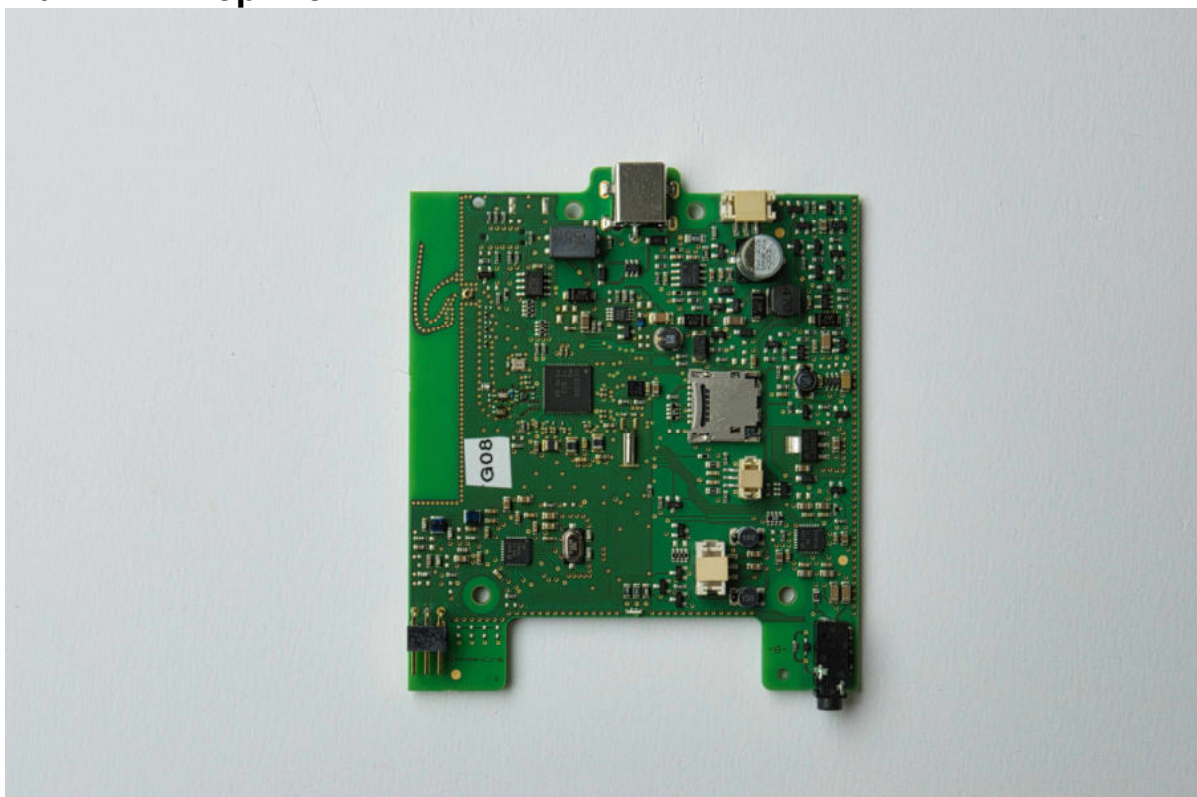
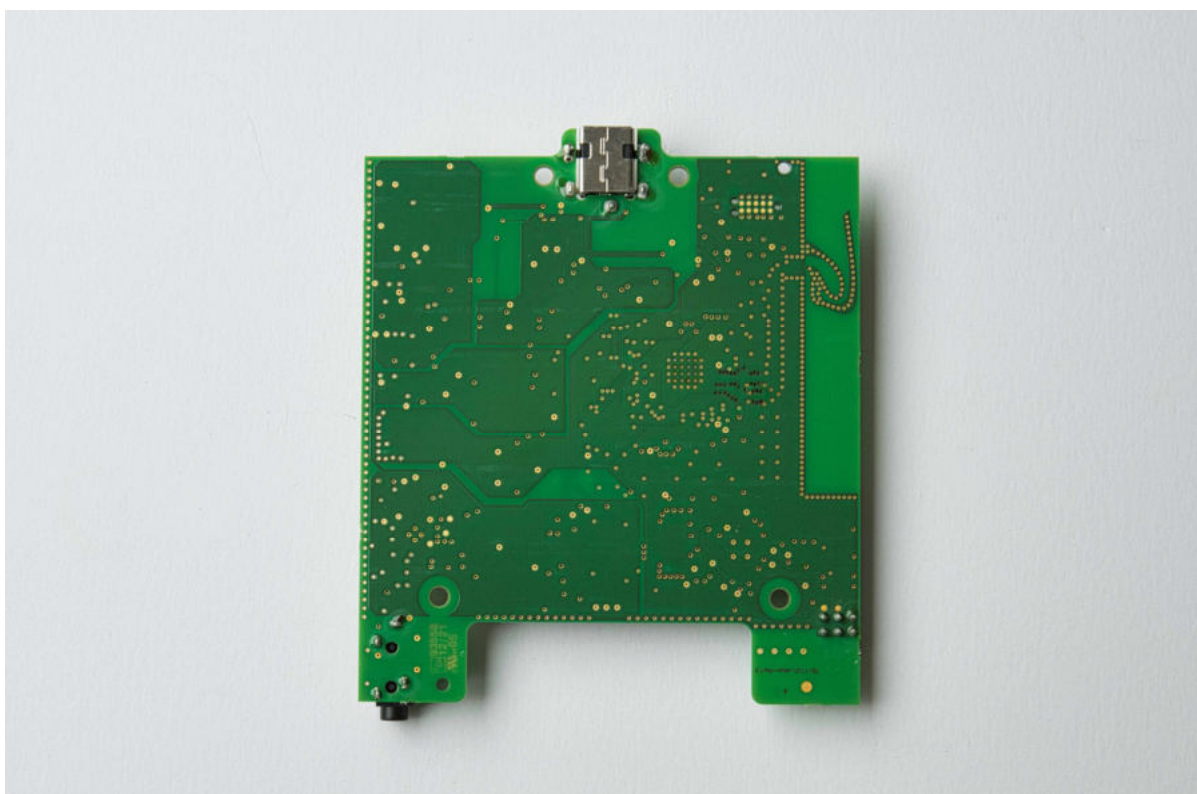


Toniebox internal

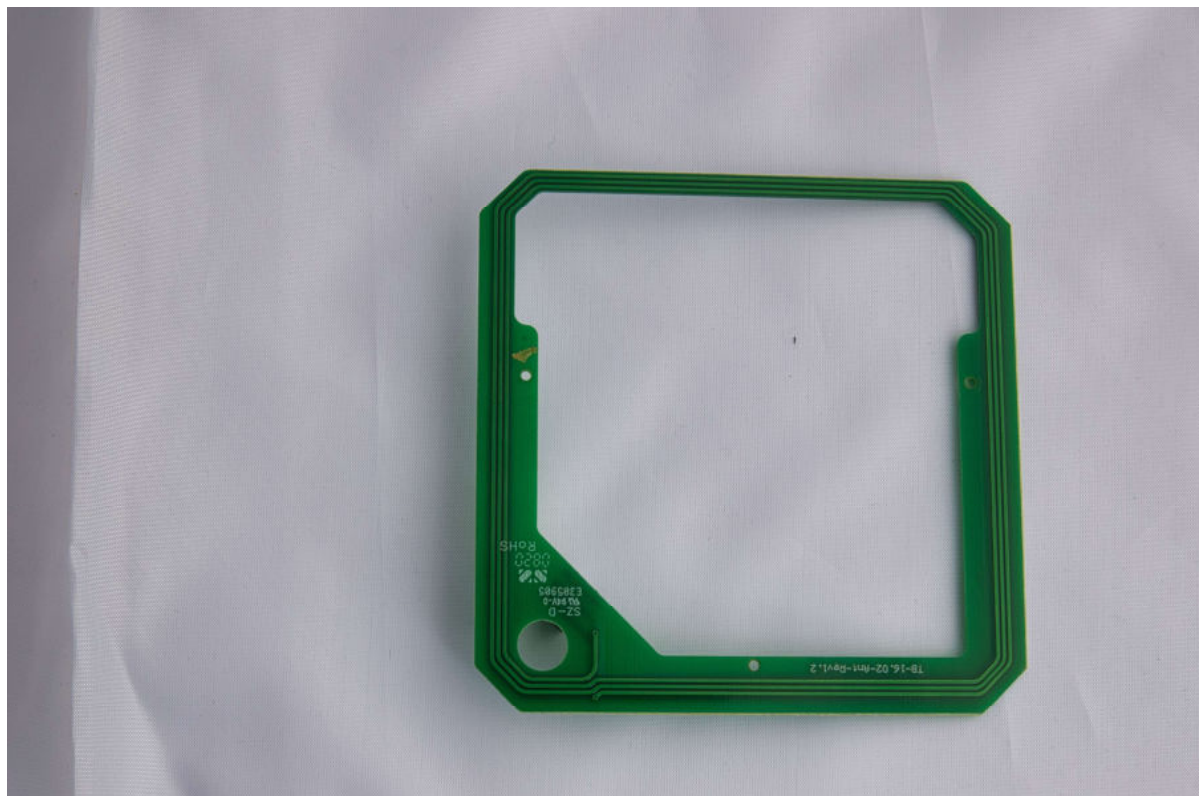
Main PCB Top View



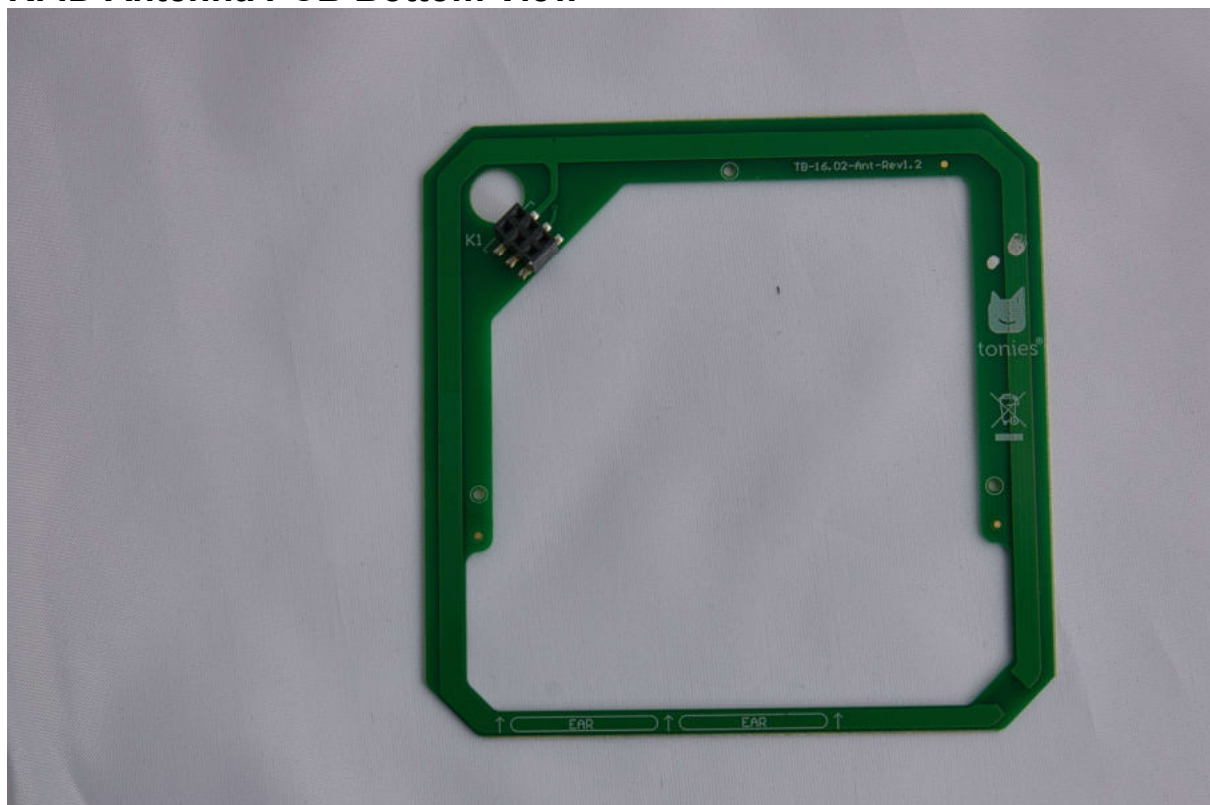
Main PCB Bottom View



RFID Antenna PCB Top View



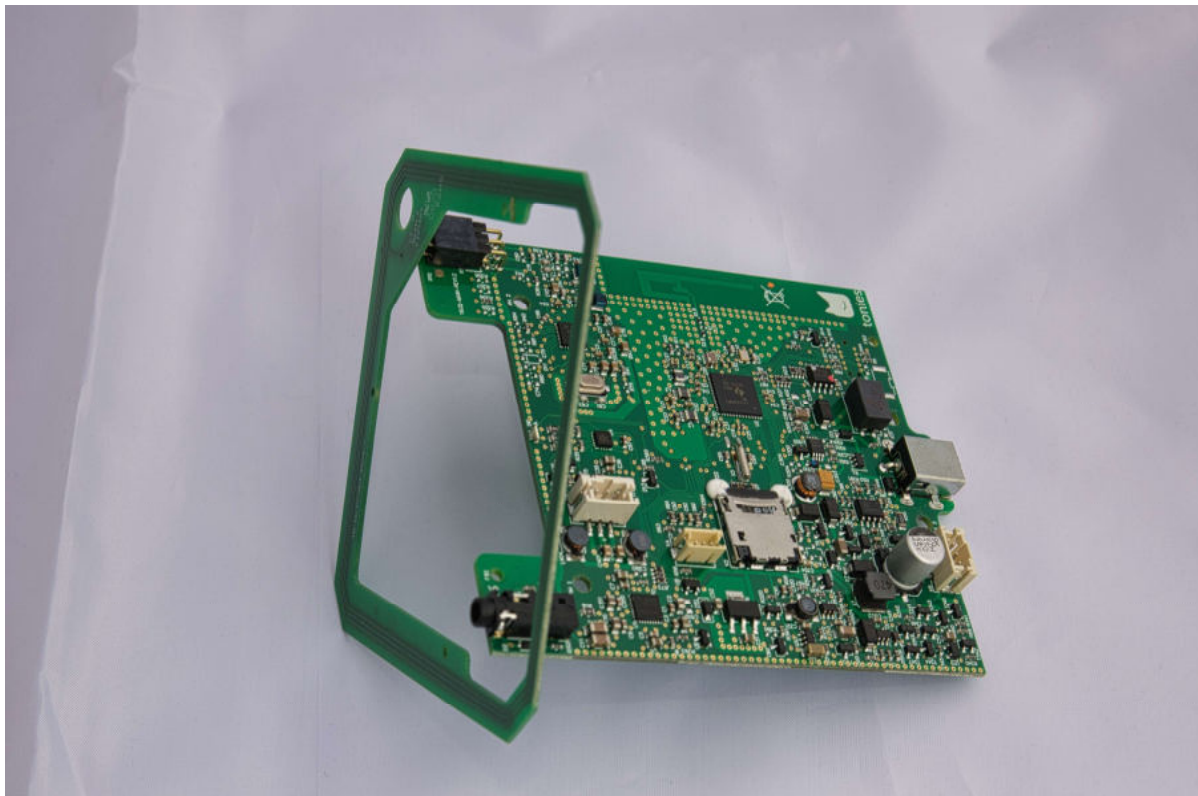
RFID Antenna PCB Bottom View



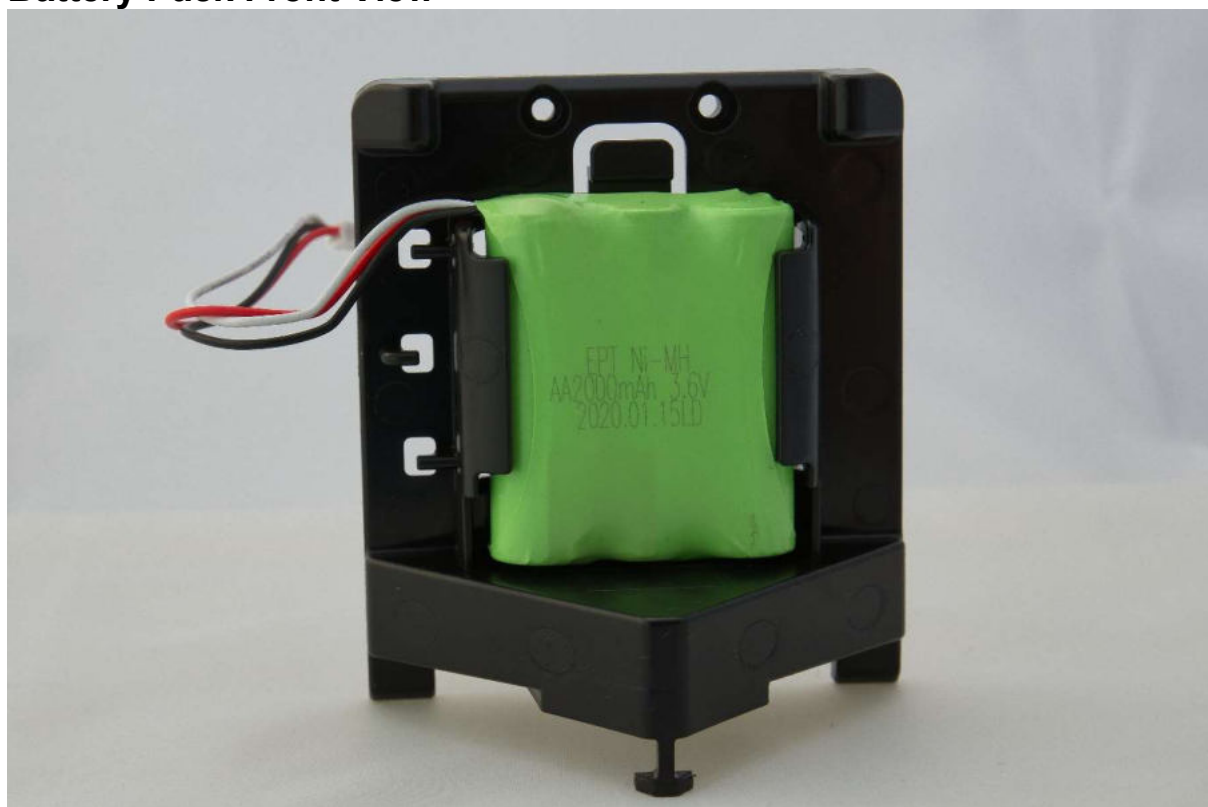
RFID Antenna PCB mounted together with Main PCB in Chassis



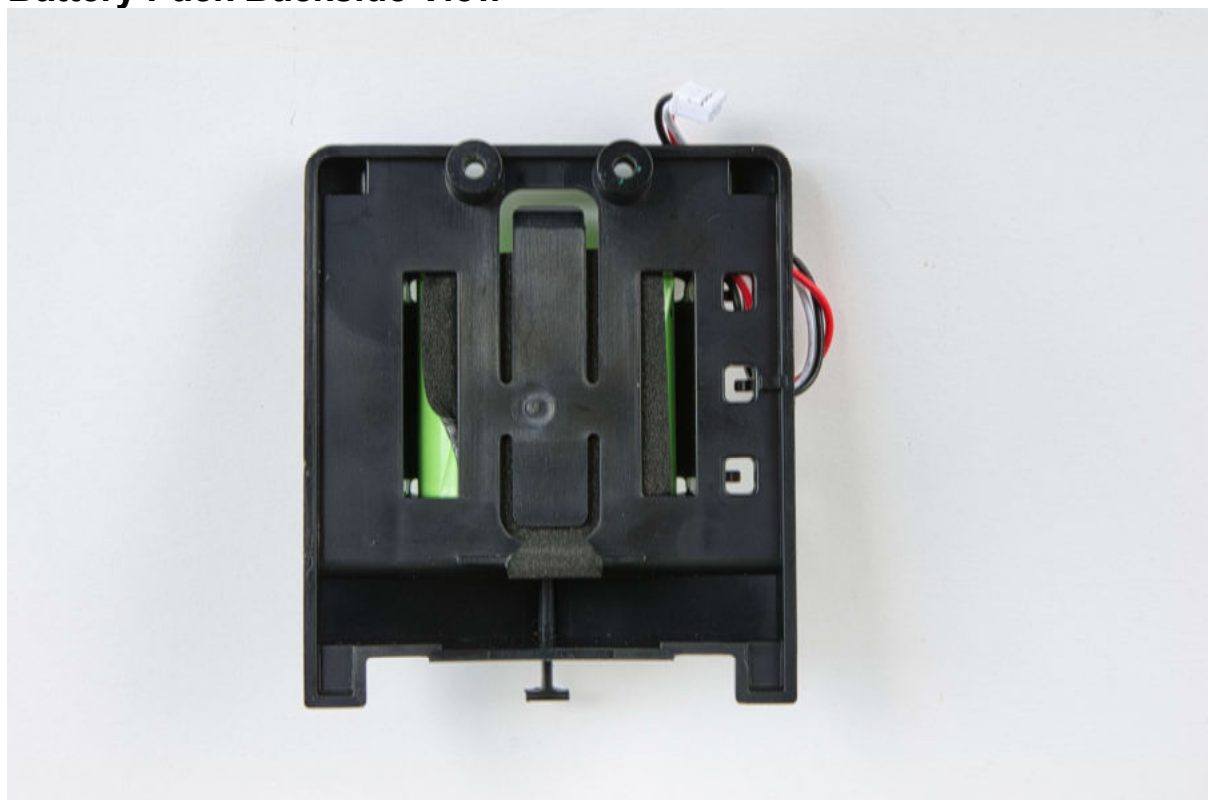
RFID Antenna PCB mounted on Main PCB



Battery Pack Front View



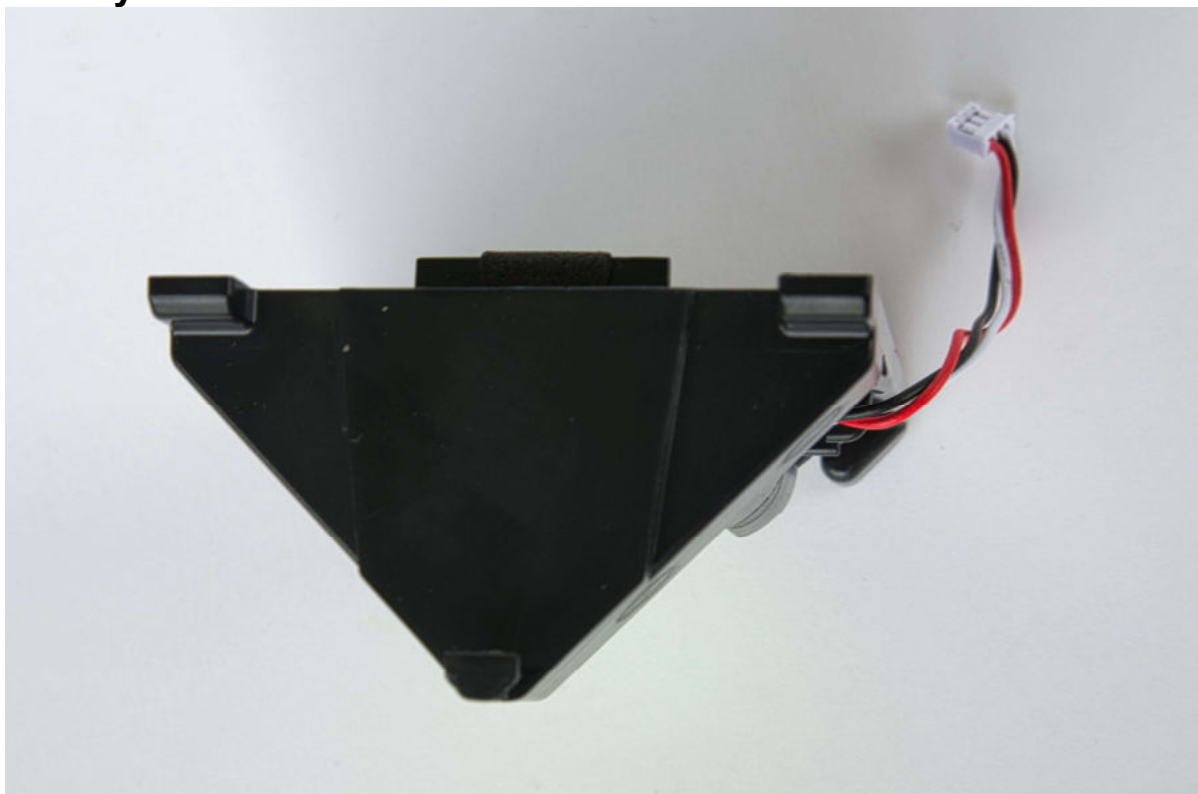
Battery Pack Backside View



Battery Pack Top View



Battery Pack Bottom View



Battery Pack Right Side View



Battery Pack Left Side View

