

12.Appendixes

12.1.Photos and Ports Location

Photo Reference Number	Title
PHT/001	Test configuration for the measurement of SAR Lab
PHT/002	Front View of the DUT
PHT/003	Back View of the DUT
PHT/004	Top Face at 0 mm
PHT/005	Bottom Face at 0 mm
PHT/006	Edge 2 (Right Face) at 0 mm
PHT/007	Edge 3 (Back Face) at 0 mm
PHT/008	Edge 2-3 at 0 mm
PHT/009	Open View 1
PHT/010	Open View 2
PHT/011	Open View with Serial Communication Connected
PHT/012	Conducted Sample
PHT/013	Antenna Location – View 1
PHT/014	Antenna Location – View 2
PHT/015	DUT Schematic

PHT/001: Test configuration for the measurement of SAR Lab



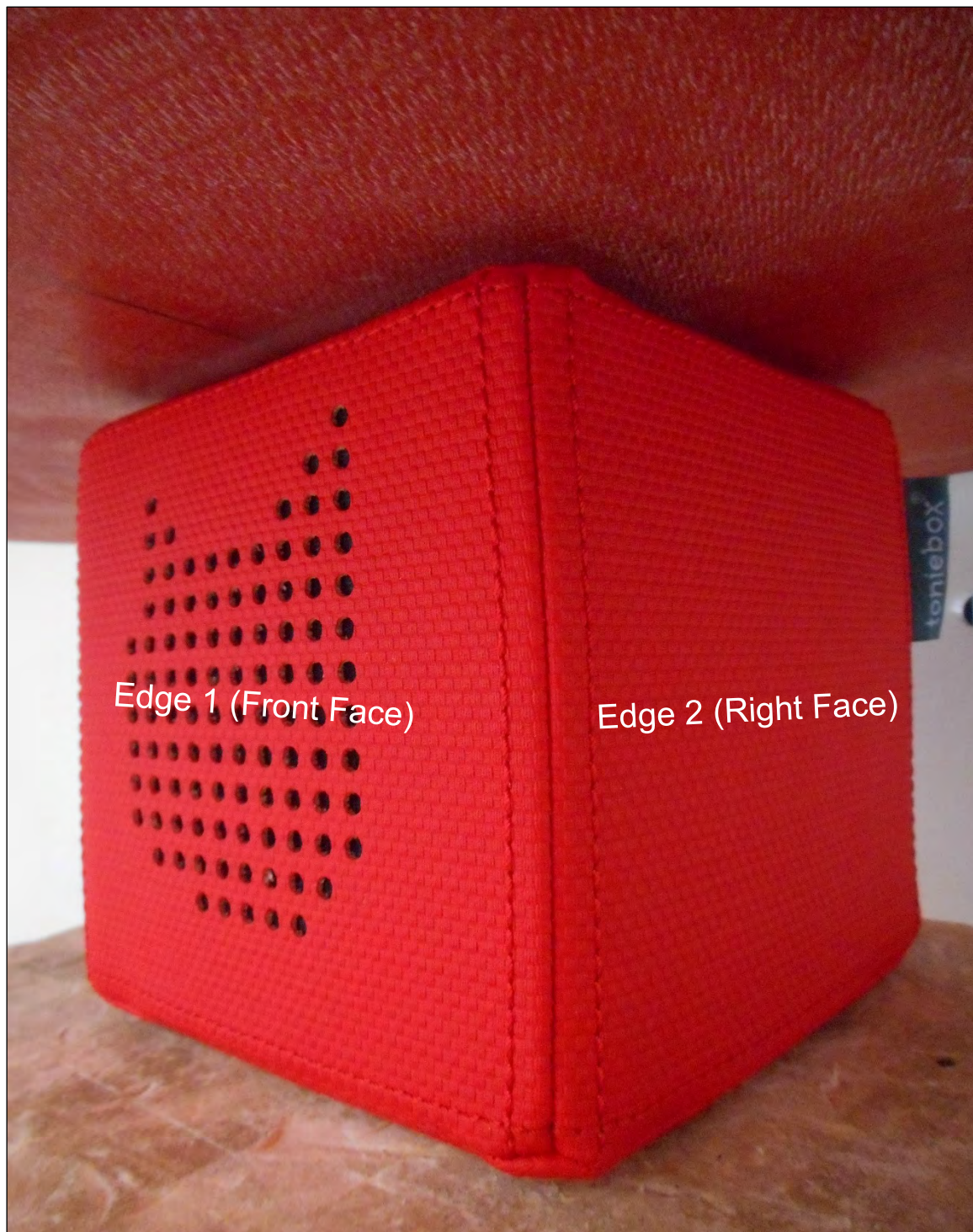
PHT/002: Front View of the DUT



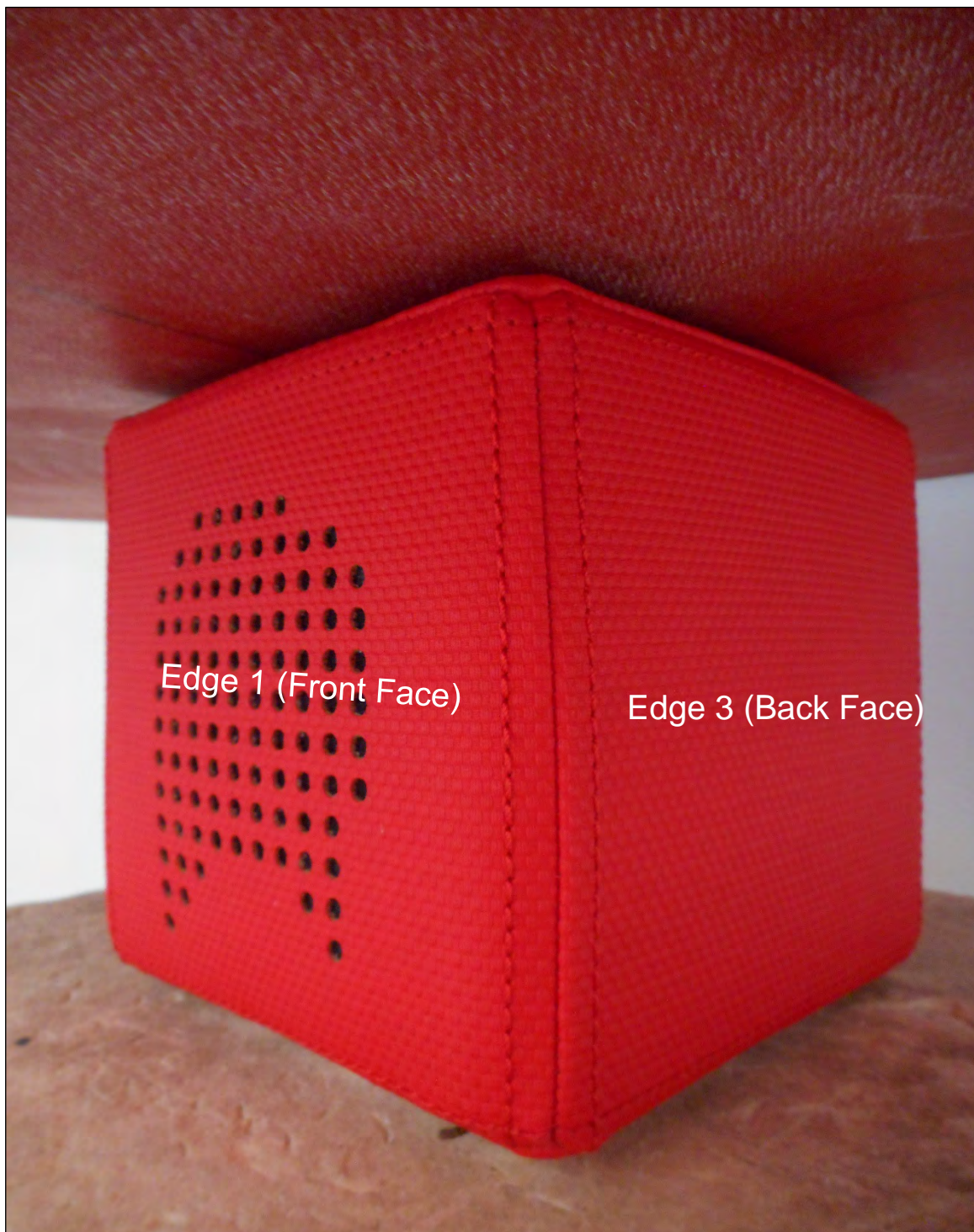
PHT/003: Back View of the DUT



PHT/004: Top Face at 0 mm



PHT/005: Bottom Face at 0 mm



PHT/006: Edge 2 (Right Face) at 0 mm



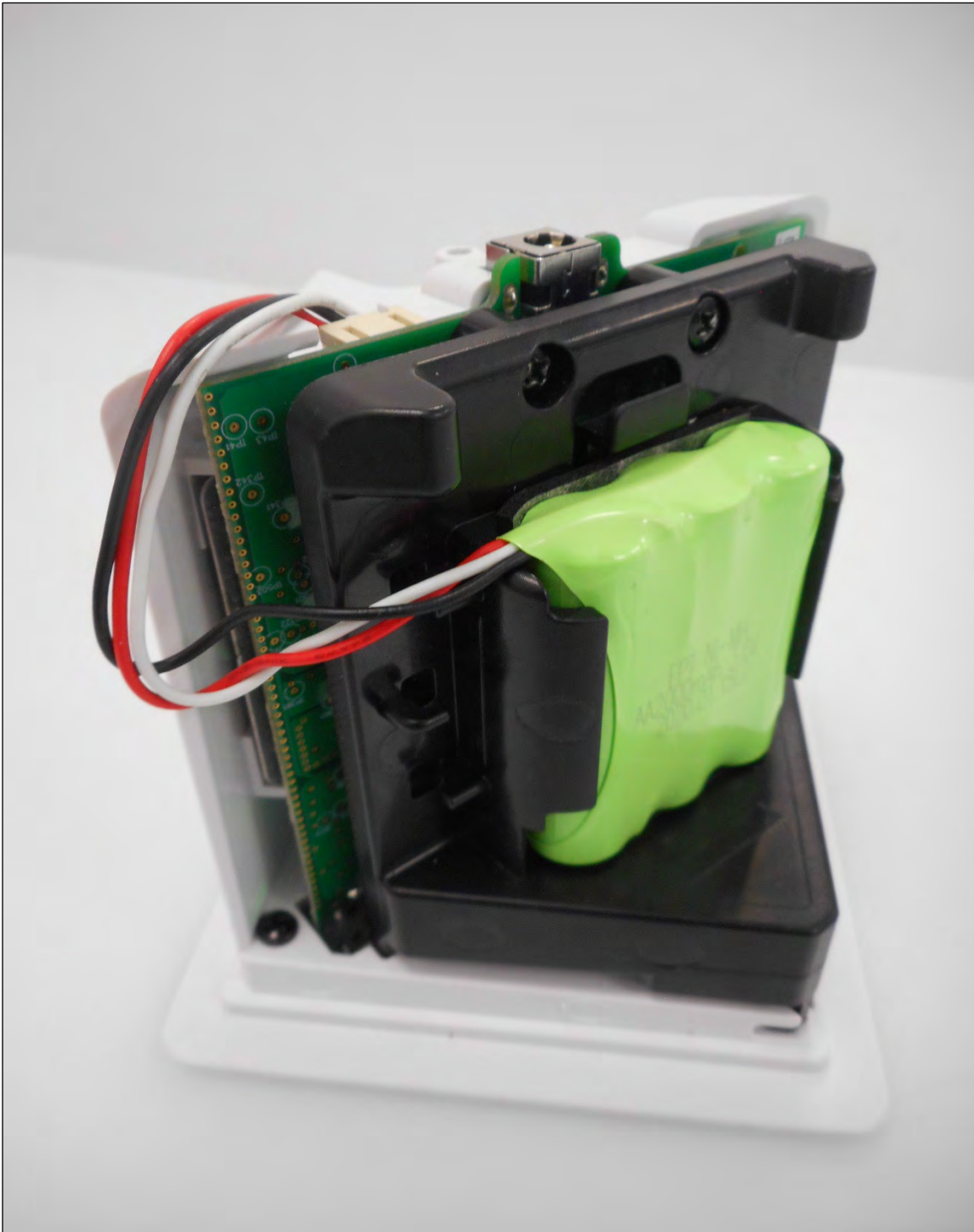
PHT/007: Edge 3 (Back Face) at 0 mm



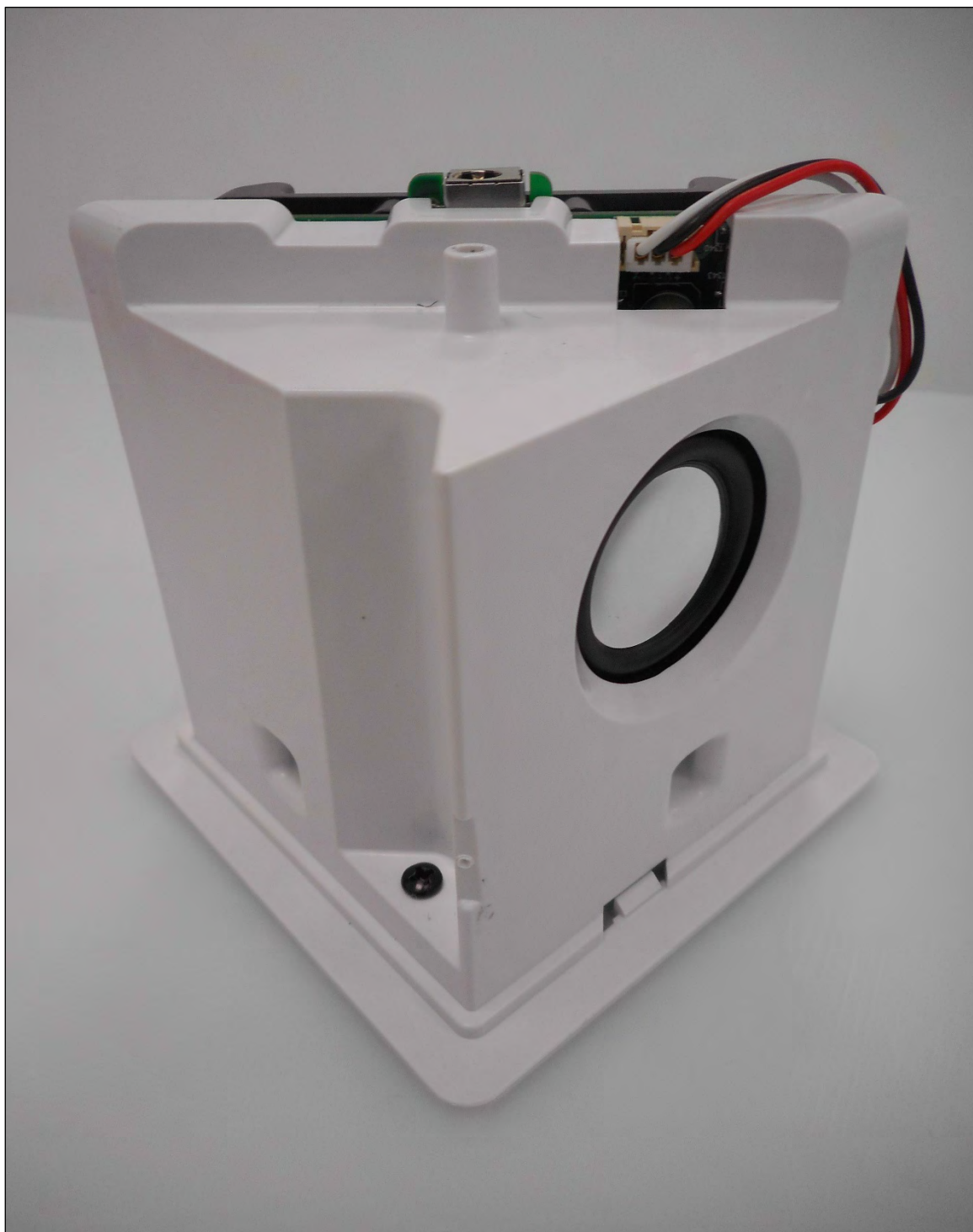
PHT/008: Edge 2-3 at 0 mm



PHT/009: Open View 1



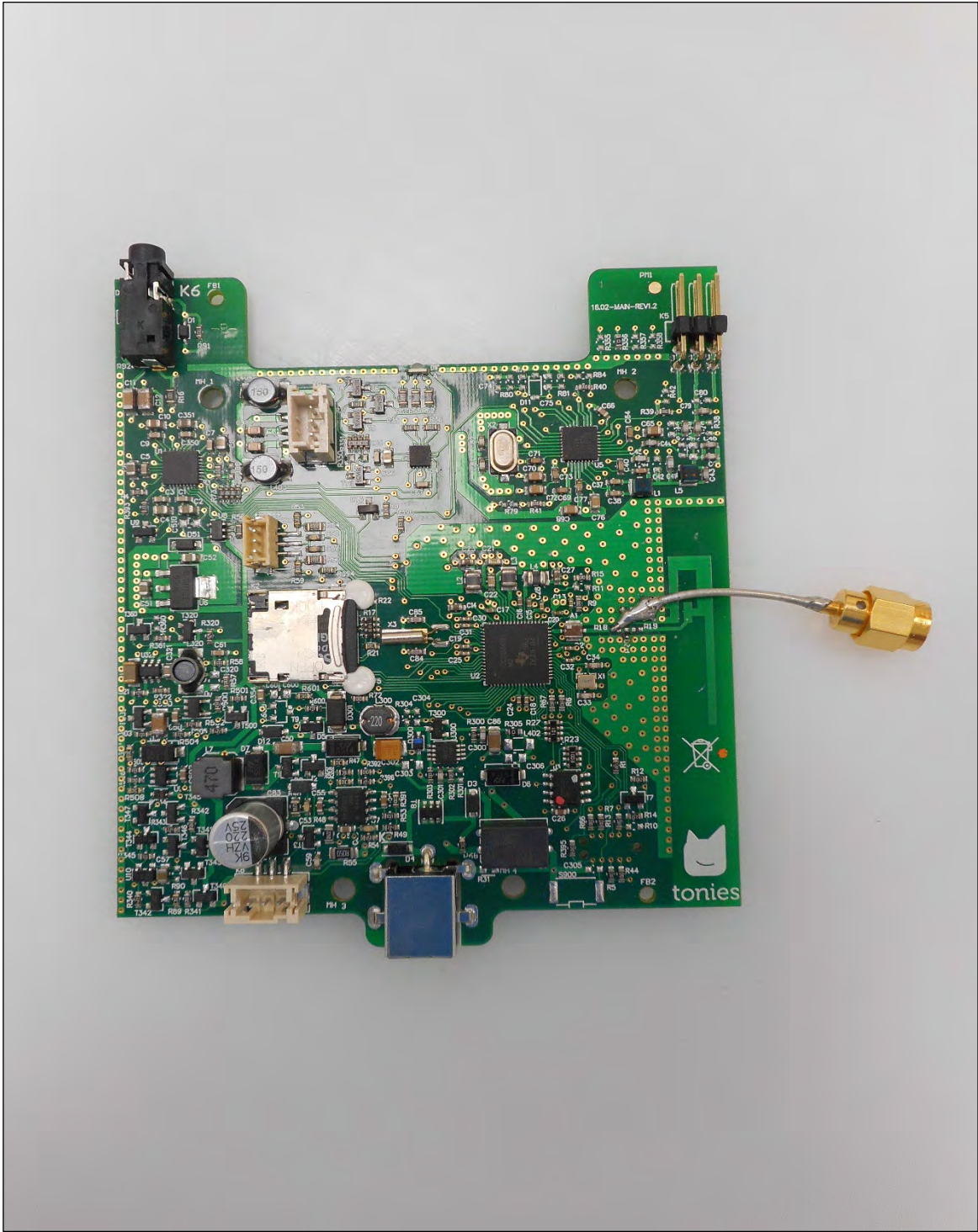
PHT/010: Open View 2



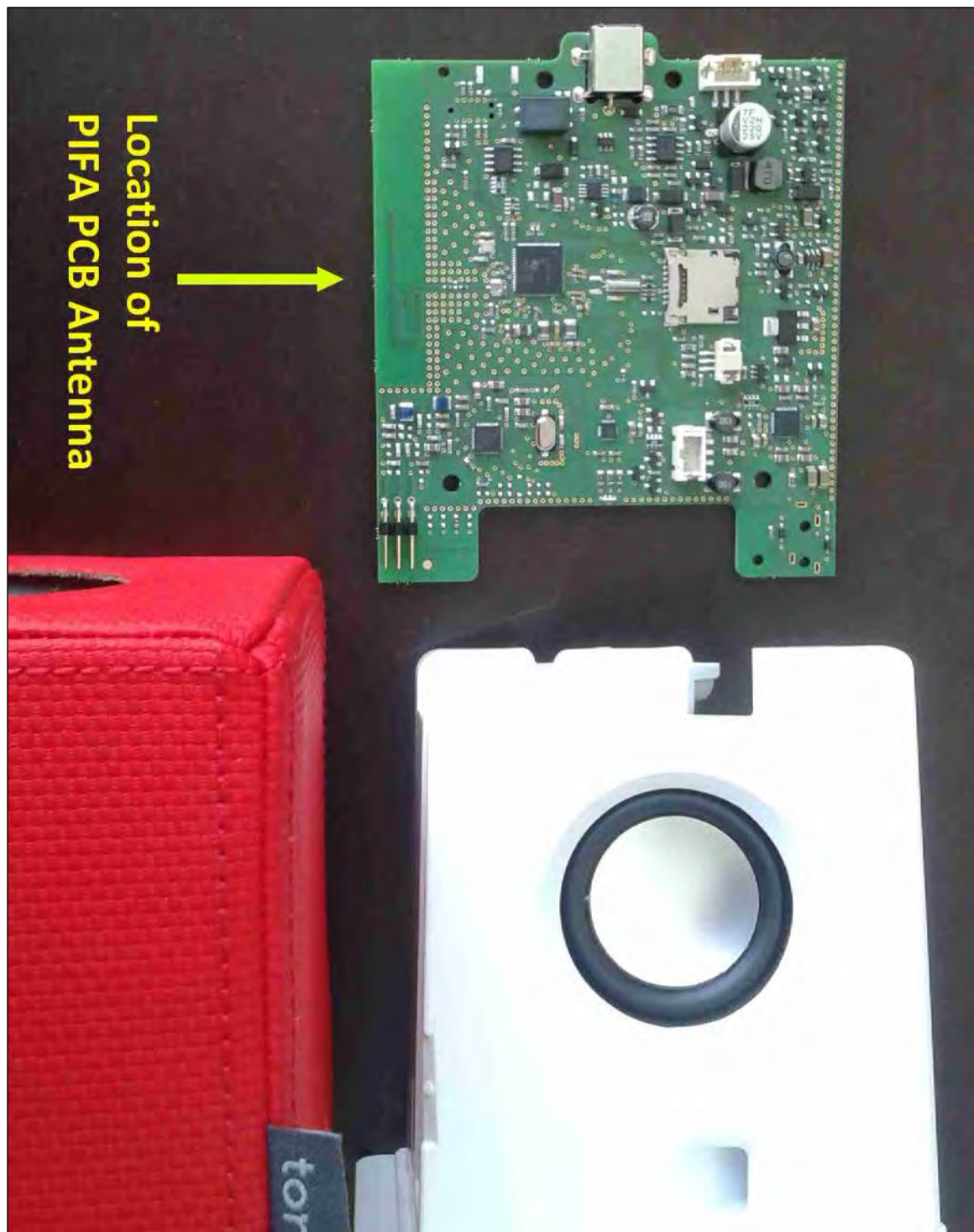
PHT/011: Open View with Serial Communication Connected



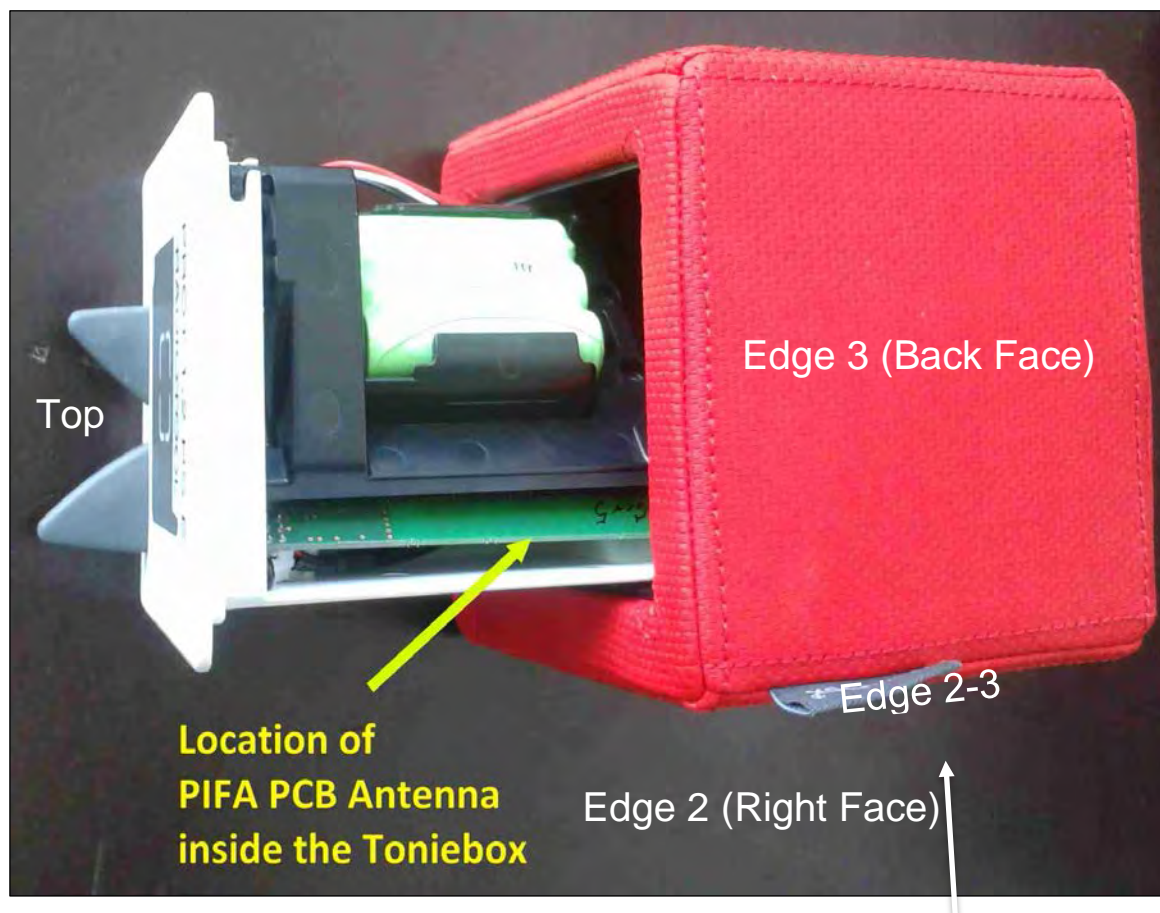
PHT/012: Conducted Sample



PHT/013: Antenna Location – View 1



PHT/014: Antenna Location – View 2



PHT/015: DUT Schematic

