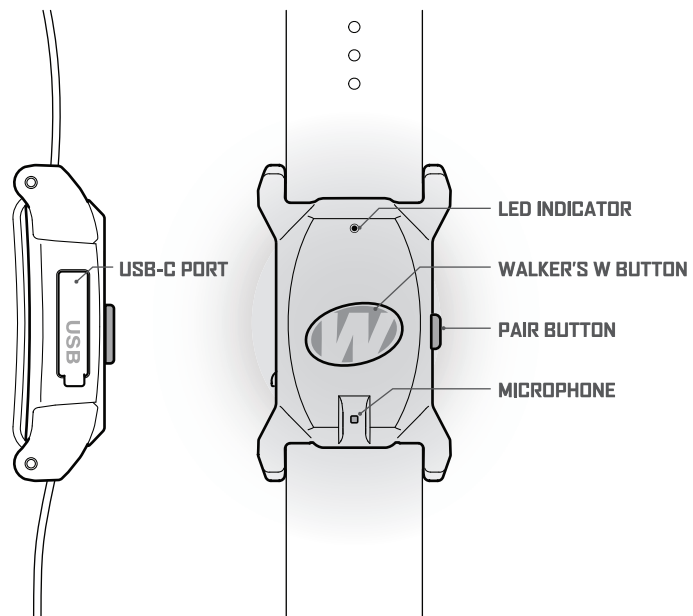


OVERVIEW



FIRST GET THE APP

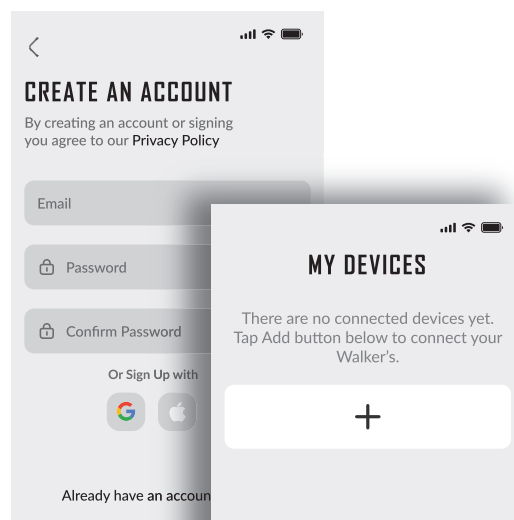
Scan a QR code below or search for Walker's Link on App Store or Google Play.

Works seamlessly with the Walker's Bluetooth lineup.



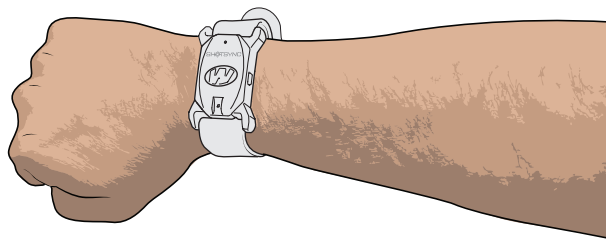
PAIR YOUR SHOTSYNC

- Open the app and follow the on-screen steps to create your account
- Tap + to add your device, and tap on the ShotSync tab
- Long press the Walker's W button to turn it on, then press the Pair button on the side to complete the pairing



WEAR YOUR SHOTS SYNC

- Strap **ShotSync** on top or bottom of your wrist on your trigger finger side
- Make it snug enough that you can feel the vibration feedback
- A secure fit allows **ShotSync** to pick up the recoil from your weapon



Power On/Off

- The device will power off after 10 minutes of inactivity.
- Press and hold the Walker's button for 2 seconds to turn on or off.




TAKE YOUR SHOT

Start New Session

Tap "Start New Session" on screen, or press the Walker's W button. A countdown will start. When you feel your ShotSync vibrate, begin to shoot! When finished, press the W button again or tap "Stop" on your screen.

- Presets:** Set your caliber, recoil strength, & audio sensitivity levels
- Countdown:** Choose from 3-9 seconds, or randomize your start signal
- Sensitivity:** Adjust detection rate and avoid picking up nearby shooters
- Last Session:** View your recorded data

See our app tutorial for more for detailed instructions.

-  **Home** Add your ShotSync or start new session
-  **Games** Shooting challenges to train your skills
-  **Profile** Find tutorials, settings, and device info, or share your results

ABOUT

LED Indicator Guide

Flashing Green and Red	Pairing Mode
Flashing Green	Device is on Standby
Solid Green	Recording Mode
Single Red Flash	Device was turned off
Blinking Red (Plugged in)	Charging in Progress
Solid Green (Plugged in)	Charging Complete

Charging Specs

Time to full charge:	1hr
Battery type:	LIR 1240
Charging Port Type:	TYPE-C
Standard Phone Charger:	5V

If a fast charger is used, it will automatically switch to the standard charging and will not damage the battery.

COMPLIANCE



GSM, LLC
GWP-ACCEL
FCC ID: 2AU3A-GWPACCEL

FCC Statement:

This device complies with Part 15 of the FCC Rules. Operation is subject to the following two conditions. (1) this device may not cause harmful interference, and (2) this device must accept any interference received, including interference that may cause undesired operation.

FCC Caution: Changes or modifications not expressly approved by the party responsible for compliance could void the user's authority to operate the equipment.

NOTE: This equipment has been tested and found to comply with the limits for Class B digital device, pursuant to part 15 of the FCC Rules. These limits are designed to provide reasonable protection against harmful interference in a residential installation. This equipment generates, uses, and can radiate radio frequency energy and, if not installed and used in accordance with the instructions, may cause harmful interference to radio or television receptions, which can be determined by turning the equipment off and on, the user is encouraged to try to correct the interference by one or more of the following measure:

- Reorient or relocate the receiving antenna.
- Increase the separation between the equipment and the receiver.
- Connect the equipment into an outlet on a circuit different from that to which the receiver is connected.
- Consult the dealer or an experienced radio/TV technician for help.

Shielded interference cable must be used with the equipment in order to comply with the limits for a digital device pursuant to Subpart B of Part 15 of FCC Rules.

Specifications and designs are subject to change without any notice or obligation on the part of the manufacturer.

The Device has been evaluated to meet general RF exposure requirement. The Device can be used in portable exposure condition without restriction.

The FCC/IC's SAR limit is 4.0 W/kg, with a maximum SAR value of 0.24 W/kg when testing the device for use on the body. The device was tested at 0 mm and meets RF exposure requirements.

La limite du das de la FCC/IC est de 4.0 W/kg, avec une valeur maximale du DAS de 0.24 W/kg lorsque l'appareil est testé pour une utilisation sur le corps. L'appareil a été testé à 0 mm et répond aux exigences d'exposition aux RF.

WARRANTY

Please complete your warranty registration online:

www.gsmoutdoors.com/product-warranty-registration

ISED NOTE:

IC: 25750-GWPACCEL

CAN ICES (B)/NMB (B)

This device contains licence-exempt transmitter(s)/receiver(s) that comply with Innovation, Science and Economic Development Canada's license exempt RSS(s). Operation is subject to the following two conditions:

1. This device may not cause interference.
2. This device must accept any interference, including interference that may cause undesired operation of the device.

The microphone of the product has no calling function, only a recording function.

Device restricted to worn on wrist operations.

Cet appareil contient des émetteurs / récepteurs exemptés de licence conformes aux RSS (RSS) d'Innovation, Sciences et Développement économique Canada. L'exploitation est autorisée aux deux conditions suivantes :

1. L'appareil ne doit pas produire de brouillage.
2. L'utilisateur de l'appareil doit accepter tout brouillage radio électrique subi, même si le brouillage est susceptible d'en compromettre le fonctionnement.

Le microphone du produit n'a pas de fonction d'appel, seulement une fonction d'enregistrement.

Dispositif limité aux opérations du poignet.

This transmitter must not be co-located or operating in conjunction with any other antenna or transmitter.

The device has been evaluated to meet general RF exposure requirement. The device can be used in portable exposure condition without restriction.

Android, Google Play and the Google Play logo are trademarks of Google LLC.

App Store is a service mark of Apple Inc., registered in the U.S. and other countries and regions. 7

 WARNING	
<ul style="list-style-type: none"> • INGESTION HAZARD: This product contains a button cell or coin battery. • DEATH or serious injury can occur if ingested. • A swallowed button cell or coin battery can cause Internal Chemical Burns in as little as 2 hours. • KEEP new and used batteries OUT OF REACH of CHILDREN • Seek immediate medical attention if a battery is suspected to be swallowed or inserted inside any part of the body. 	

The product contains non-replaceable batteries. Battery type: 1240, nominal voltage: 3.6V

- a) Remove and immediately recycle or dispose of used batteries according to local regulations and keep away from children. Do NOT dispose of batteries in household trash or incinerate.
- b) Even used batteries may cause severe injury or death.
- c) Call a local poison control center for treatment information.
- d) Do not force discharge, recharge, disassemble, heat above 60°C or incinerate. Doing so may result in injury due to venting, leakage, or explosion resulting in chemical burns.

CONTACT US:
Toll Free: 1-877-269-8490
Mon – Fri / 8 AM – 5 PM (CST)
www.walkersgameear.com

GSM, LLC
P.O. Box 535189
Grand Prairie, TX 75053



GSM
OUTDOORS
THINK OUTSIDE

SHOTSYNC™

POWERED BY
WALKER'S®

QUICK
START
GUIDE

