



QUICK START GUIDE

PRODUCT FEATURES



**Fall &
Impact Detection**



**Emergency help/
Panic button**



**Automated
S.O.S Message**



**Accident Location
Coordinates**



Pitch and Roll

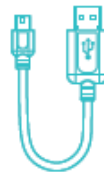
WHAT IS INSIDE THE BOX?



**Newton's
Meter x 1**



**Bracket with
3M Sticker x 1**



**Micro USB
Cable x 1**



**Lanyard
x 1**

NOTHING IS MORE IMPORTANT THAN YOUR LIFE. YOUR LIFE.



01 How to install?

Place the lanyard thread on to
Newton's Meter



01 HOW TO INSTALL?



STEP 01
Remove 3M tape
from the bracket.



STEP 02
Install bracket on
rear helmet.



STEP 03
Press down
Eject Button and
Insert into Bracket.



STEP 04
Rotate Newton's
Meter 45°
clockwise to lock.

02 HOW TO REMOVE?



STEP 01
Press down
Eject Button.



STEP 02
Rotate Newton's
Meter 45° anti
clockwise to unlock.



driving

01 HOW TO INSTALL



STEP 01
Remove 3M tape
from the bracket.



STEP 02
Install the bracket
on the dash-
board.



STEP 03
Press down Eject
button and insert
into bracket.



STEP 04
Rotate Newton's
Meter 45° clockwise
to lock.

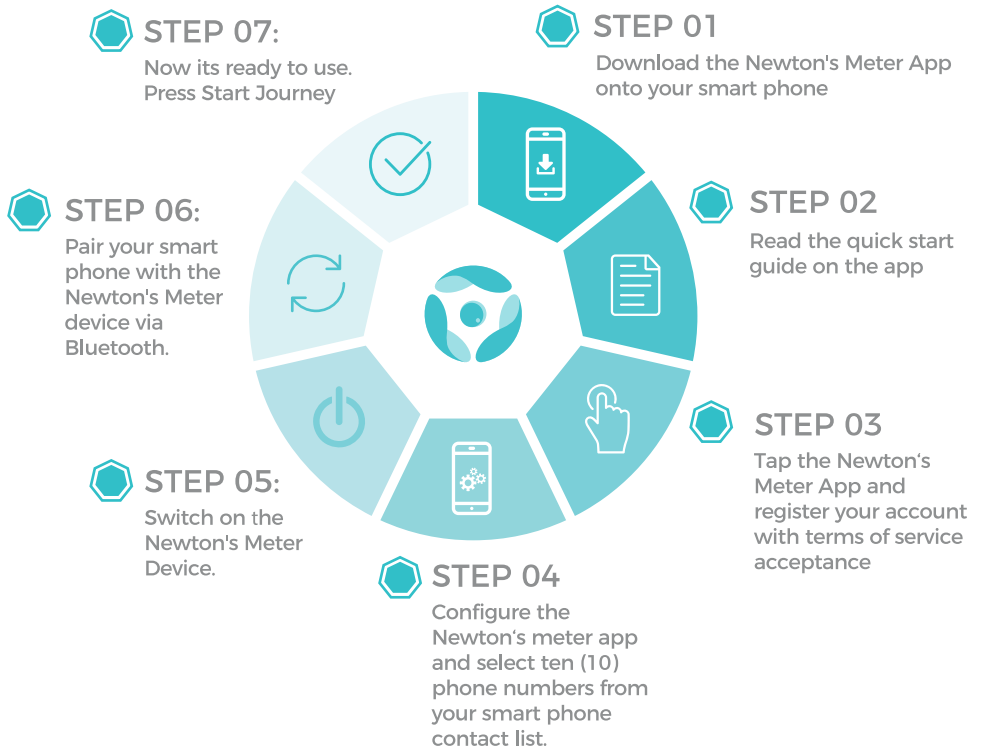


STEP 01
Press the Eject
button.

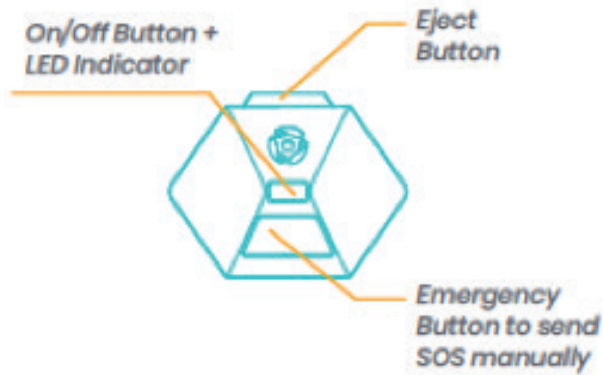


STEP 02
Rotate Newton's
Meter 45° clockwise
to unlock.







EASY SET-UP



PRODUCT DETAILS



LED INDICATOR

-  **CHARGING**
Fast Blinking Red
-  **FULL CHARGE**
Static Red
-  **Operating**
Slow Cyan Blinking
-  **LOW BATTERY DURING OPERATION**
Red & Cyan Alternate Blinking
-  **BLUETOOTH PAIRING**
Cyan blinking: 2x Pause & Repeat
-  **EMERGENCY BUTTON PRESS**
Static Green: Press the emergency button for 3 sec, the led will go static green, indicating s.o.s msg with GPS coordinates has been sent.

RIDING/DRIVING PATTERN



GREEN ZONE
Safe Rider, Less than 4 dangerous maneuvers



AMBER ZONE
Moderate Rider, Between 5-9 dangerous maneuvers



RED ZONE
Unsafe Rider, More than 10 dangerous maneuvers

FCC statement :

This device complies with Part 15 of the FCC Rules. Operation is subject to the following two conditions: (1) This device may not cause harmful interference, and (2) this device must accept any interference received, including interference that may cause undesired operation.

FCC Caution: Any changes or modifications not expressly approved by the party responsible for compliance could void the user's authority to operate this equipment.

This transmitter must not be co-located or operating in conjunction with any other antenna or transmitter.

This equipment has been tested and found to comply with the limits for a Class B digital device, pursuant to Part 15 of the FCC Rules. These limits are designed to provide reasonable protection against harmful interference in a residential installation. This equipment generates, uses and can radiate radio frequency energy and, if not installed and used in accordance with the instructions, may cause harmful interference to radio communications. However, there is no guarantee that interference will not occur in a particular installation. If this equipment does cause harmful interference to radio or television reception, which can be determined by turning the equipment off and on, the user is encouraged to try to correct the interference by one of the following measures:

- Reorient or relocate the receiving antenna.
- Increase the separation between the equipment and receiver.
- Connect the equipment into an outlet on a circuit different from that to which the receiver is connected.
- Consult the dealer or an experienced radio/TV technician for help.

Radiation Exposure Statement:

The product comply with the FCC portable RF exposure limit set forth for an uncontrolled environment and are safe for intended operation as described in this manual. The further RF exposure reduction can be achieved if the product can be kept as far as possible from the user body or set the device to lower output power if such function is available.