

## EXHIBIT 1 - PRODUCT LABELING

### Proposed IC Label Format

<p align="center"><b>Home Smart Server</b></p> <hr/> <p><b>Model: C4011300</b></p> <p><b>FCC ID: 2ATY4-C4011300</b></p> <p><b>IC: 25239-C4011300</b></p> <p><b>Ultimate IOT (Shanghai) Technology Ltd.</b></p>
--

Specifications: Text is black in color and justified. The label shall be securely affixed to a permanently attached part of the device, in a location where it is visible or easily accessible to the user, and shall not be readily detachable. The label shall be sufficiently durable to remain fully legible and intact on the device in all normal conditions of use throughout the device's expected lifetime. These requirements may be met either by a separate label or nameplate permanently attached to the device or by permanently imprinting or impressing the label directly onto the device. The label text shall be legible without the aid of magnification, but is not required to be larger than 8- point font size. If the device is too small to meet this condition, the label information may be included in the user manual upon agreement with Industry Canada. The label for medical implants designed to be used within the human body shall be placed on the package and in the user manual.

### Proposed Label Location on EUT

IC Label Location



## EXHIBIT 2 - EUT EXTERNAL PHOTOGRAPHS

EUT View 1



EUT View 2



### EUT View 3



### EUT View 4



**EUT View 5**



**EUT View 6**





**EUT View 7**

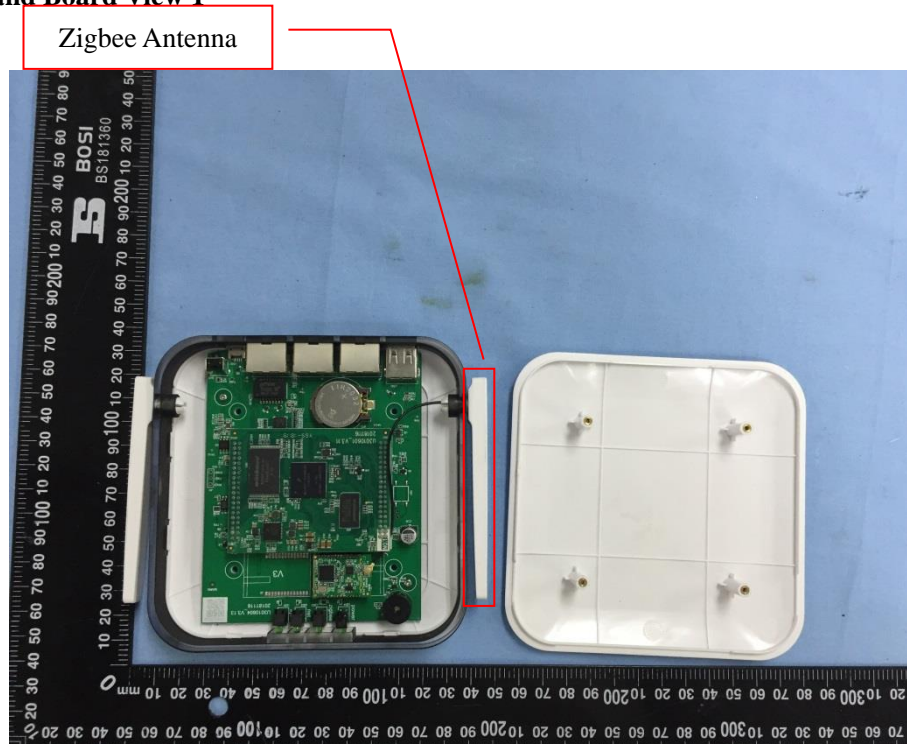


**EUT View 8**



## EXHIBIT 3 - EUT INTERNAL PHOTOGRAPHS

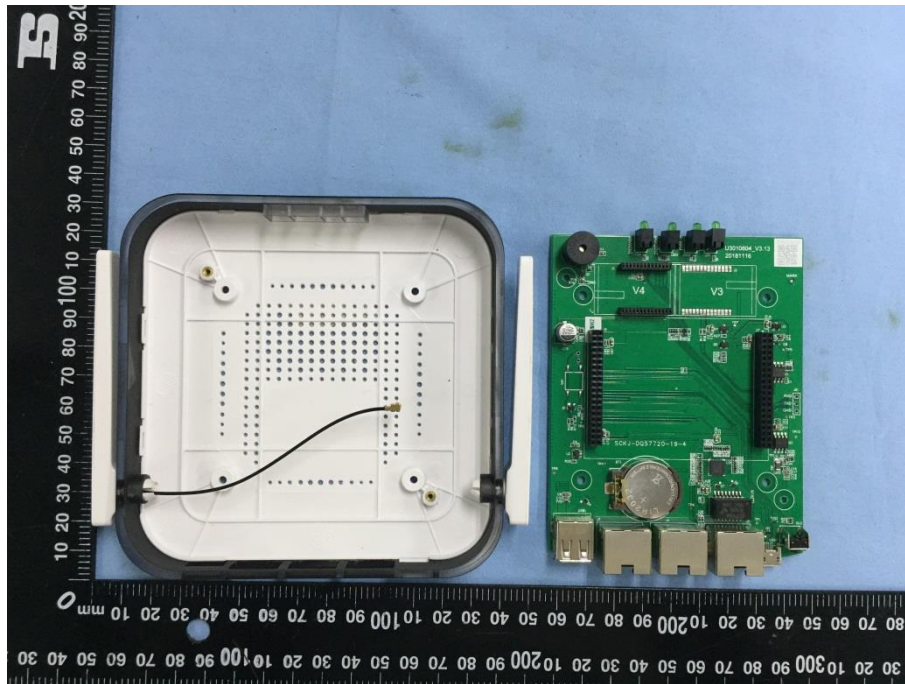
### EUT Housing and Board View 1



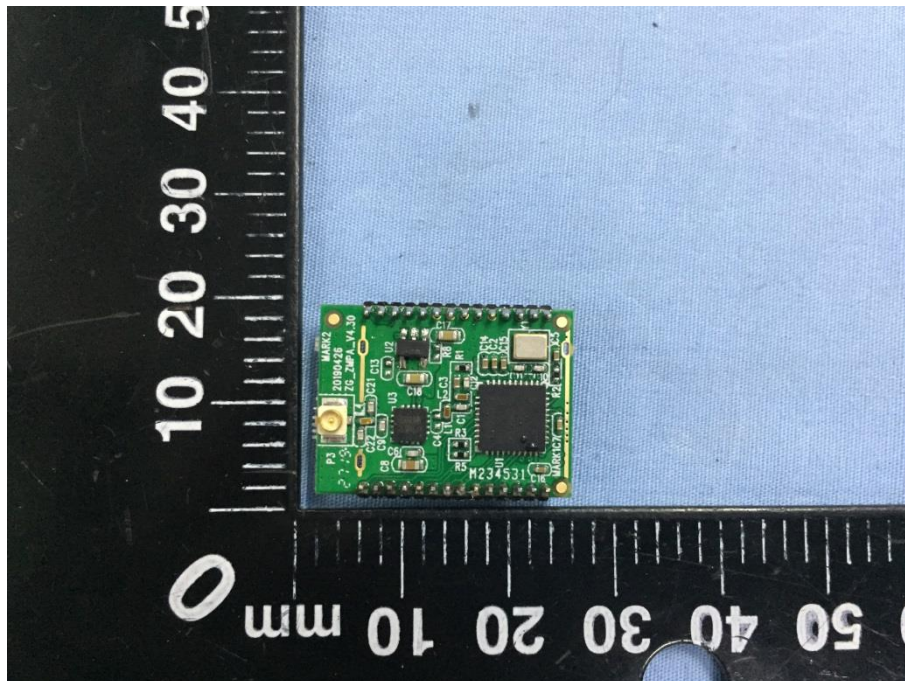
### EUT Housing and Board View 2



### EUT Housing and Board View 3

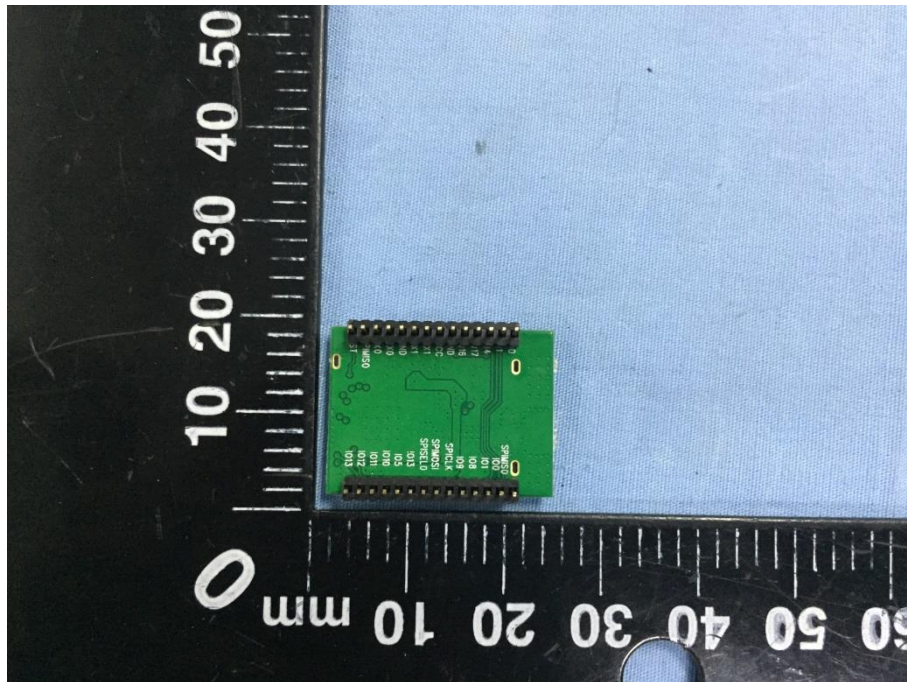


### Solder Board-Component View 1

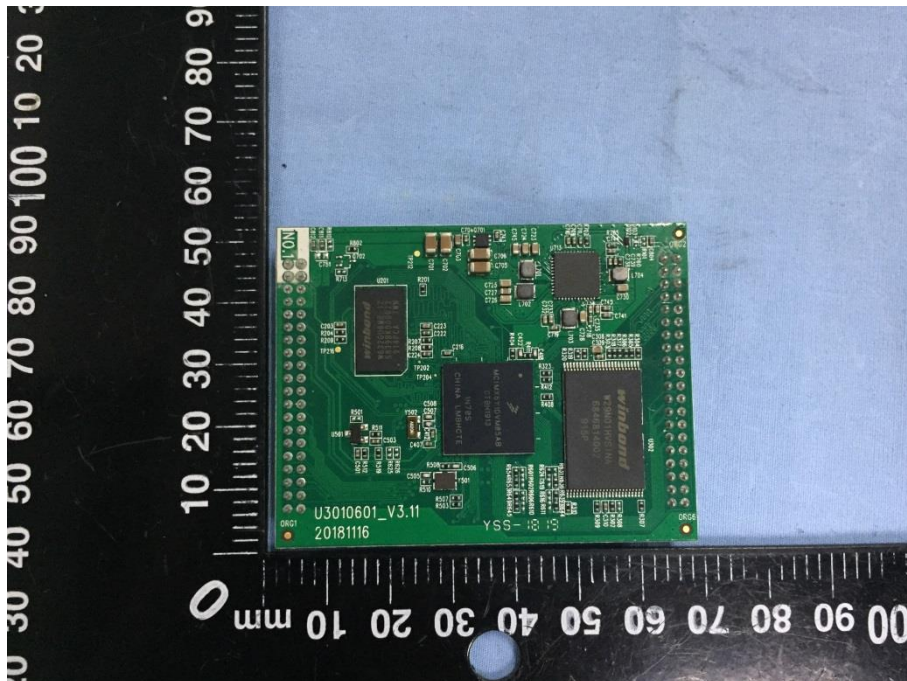




### Solder Board-Component View 2

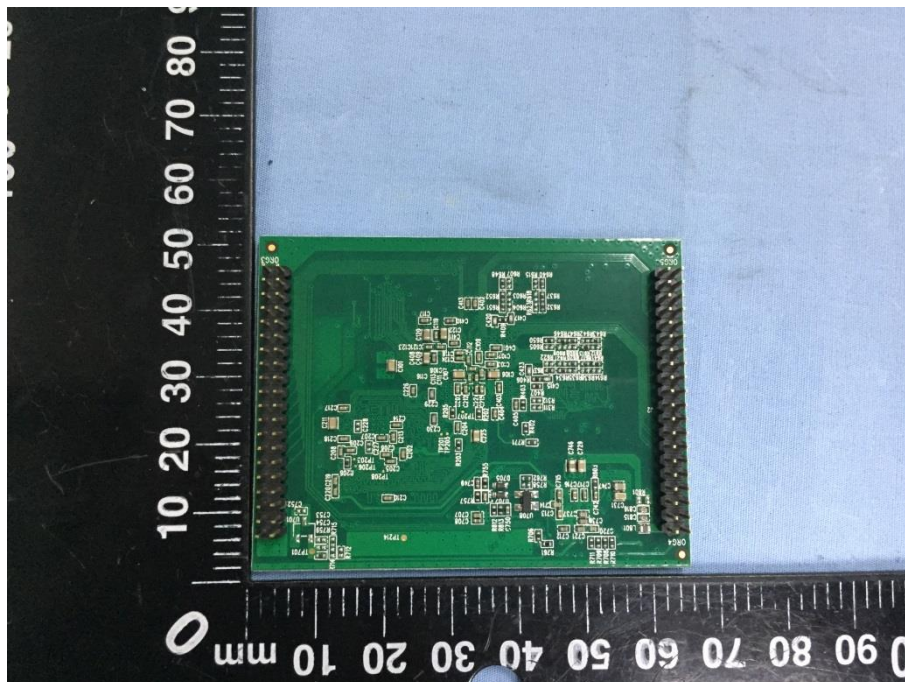


### Solder Board-Component View 3





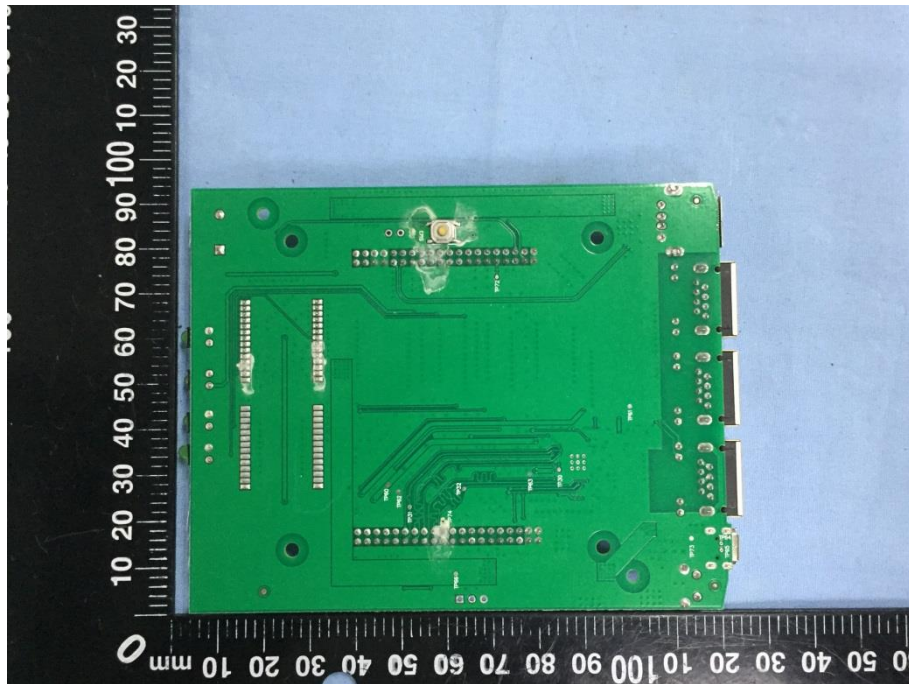
#### Solder Board-Component View 4



#### Solder Board-Component View 5



### Solder Board-Component View 6



## EXHIBIT 4 - TEST SETUP PHOTOGRAPHS

### Conducted Emission Test Setup

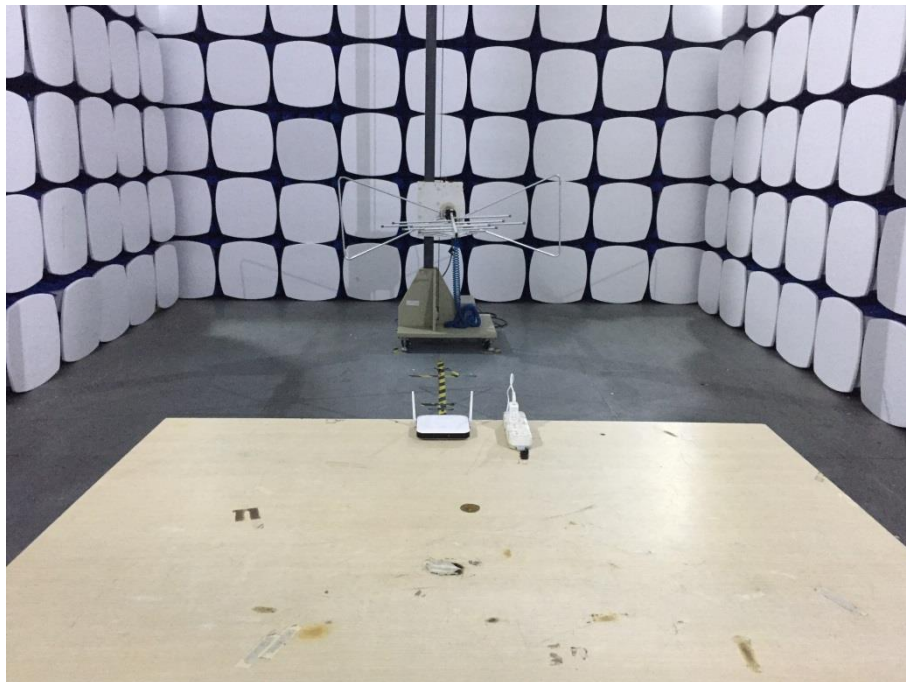


### Radiation Emission Test Setup (Below 30MHz)

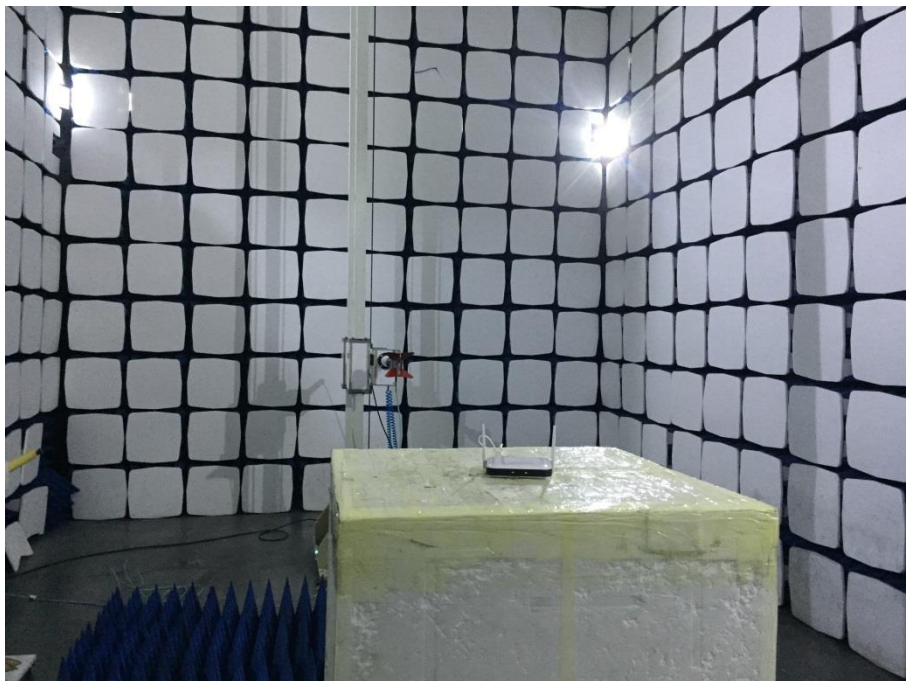




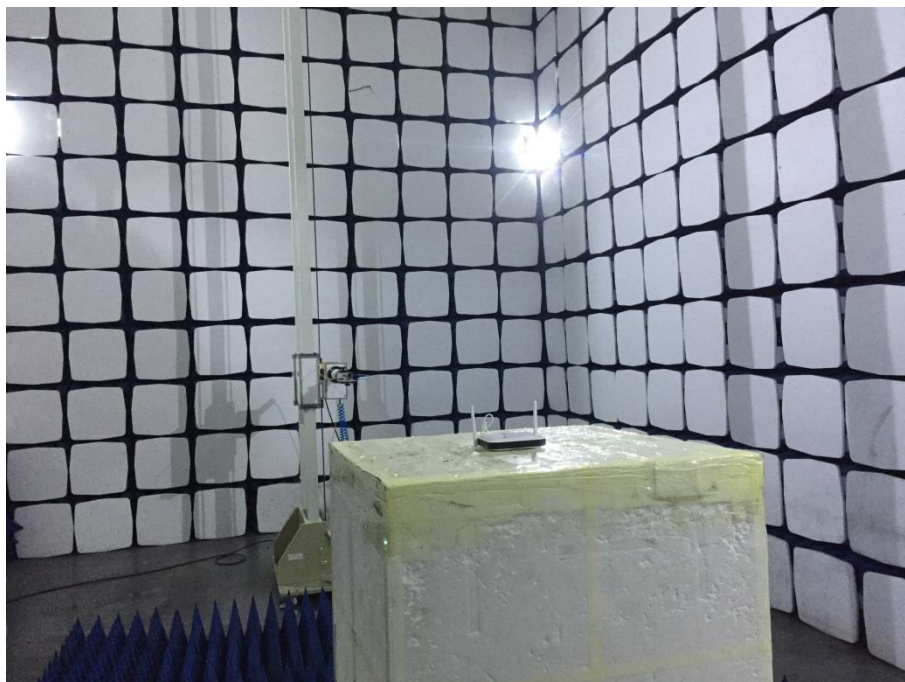
**Radiation Emission Test Setup (30MHz to 1GHz)**



**Radiation Emission Test Setup (1GHz to 18GHz)**



### Radiation Emission Test Setup (Above 18GHz)



## **EXHIBIT 5 - USERS MANUAL**

---

### **Information to Users**

According to the RSS-Gen section 8.4 and RSP-100 section 4, for this EUT, the instructions or operation manual furnished the user shall include the following or similar statement, placed in a prominent location in the text of the manual:

### **IC WARNING**

This device contains licence-exempt transmitter(s) that comply with Innovation, Science and Economic Development Canada's licence-exempt RSS(s). Operation is subject to the following two conditions:

- (1) This device may not cause interference.
- (2) This device must accept any interference, including interference that may cause undesired operation of the device.

L'émetteur/récepteur exempt de licence contenu dans le présent appareil est conforme aux CNR d'Innovation, Sciences et Développement économique Canada applicables aux appareils radio exempts de licence.

L'exploitation est autorisée aux deux conditions suivantes:

1. L'appareil ne doit pas produire de brouillage;
2. L'appareil doit accepter tout brouillage radioélectrique subi, même si le brouillage est susceptible d'en compromettre le fonctionnement.