

User Manual



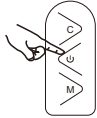
APP SMART

Thank you very much for choosing our company's APP controller, and this product adopts the current emerging APP technology and top manufacturing process, which is developed integrating years of R&D experience. The product can support mobile APP to perform local. For proper installation and usage of the product, please read this instruction carefully.

1. Product Parameters

Working Voltage: DC12/24V
Current: 2A x 3CH
Max Load : 12V/36W; 24V/72W
Product size: L70 xW30 xH15mm
Working environment: indoor
Working temperature: - 10 C - 45 C (140 F - 113 F)
Humidity: <80% RH

2. Manual Control by Buttons



C : Static/dynamic mode,
U : Click on/off,
M : Red Light and Music Model.

3. Connection

Connect the led controller to your LED strip and power, below photo for reference.



4. Installation



Clean the Back of the TV with a wet towel and dry it natural



Place the lights on where you want to paste



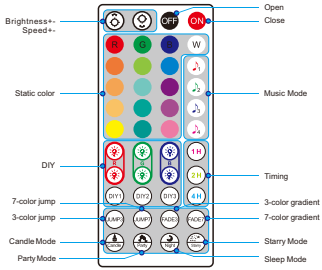
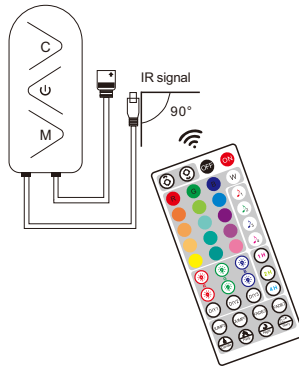
Tear off the side of 3M double-sided adhesive



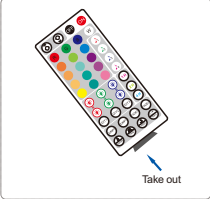
Connect the power port of the lamp to the device.

5. Ways to Operation

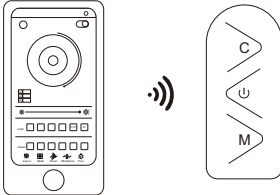
(1). Remote Control



Please pointing at the sensor of remote control receiver to control the light.



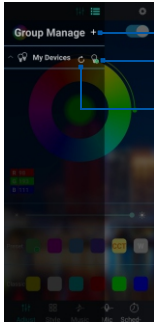
(2).APP Remote



Download App



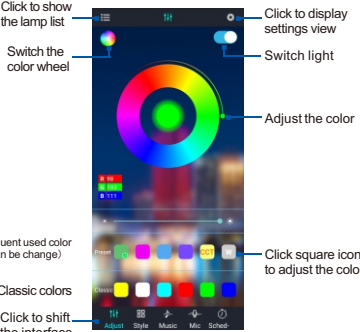
5.21 As shown in the figure below:



Click to go to group management
Click to select the most recently connected device
Click to select device

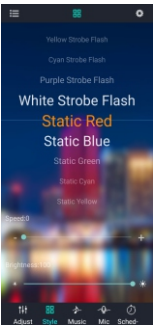
NOTE:
Enter the device list interface once again:
Click the device list icon in the upper left corner of the interface.
Refersh the device list:
Touch your device list and don't left, sliding down, until refresh icon appears in the device list column, and then left your fingers.

5.22 Main interface



Click to show the lamp list
Switch the color wheel
Adjust the color
Click square icon to adjust the color
Click to shift the interface
Click to display settings view
Switch light
Frequent used color (can be change)
Classic colors

5.23 Style Mode



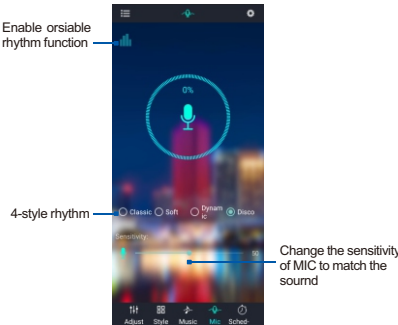
Scroll the selection mode

5.24 Music Mode



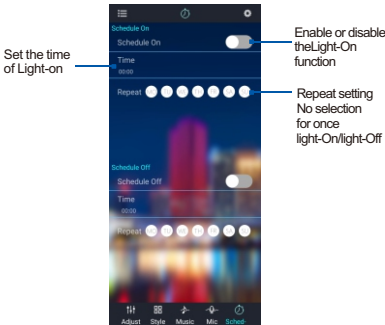
Previous song
Click to display settings view
Pause/Play

5.25 Mic Mode



Enable orisable rhythm function
4-style rhythm
Change the sensitivity of MIC to match the sound

5.26 Schedule Mode



Set the time of Light-on
Enable or disable the Light-On function
Repeat setting No selection for once light-On/light-Off

6. Warranty instructions

The one-year warranty of our products is only applicable to all operations that conform to the instructions. The warranty does not include the following:
1. Any change, amendment, deletion or scribbled purchase labels or instructions.
2. Failure due to damage, incorrect connection or misuse.
3. Because of the natural environment rather than the inherent causes of the product (such as lightning, flood, etc.). The bad phenomena of fire, etc.
4. The product has been opened or disassembled.
5. Adverse consequences arising from use, maintenance or custody do not conform to product specifications (e.g. damp, corrosive).
6. Any other matter caused by product defect, appearance distortion, appearance damage or external force Physical injury.

Note.
The illustrations of products, accessories, user interface, etc. in the manual are schematic diagrams for reference only. Due to the updating and upgrading of the product, there may be slight differences between the physical product and the schematic diagram. Please refer to the physical product.

FCC Caution:

This device complies with part 15 of the FCC Rules. Operation is subject to the following two conditions: (1) This device may not cause harmful interference, and (2) this device must accept any interference received, including interference that may cause undesired operation.

Any Changes or modifications not expressly approved by the party responsible for compliance could void the user's authority to operate the equipment.

Note: This equipment has been tested and found to comply with the limits for a Class B digital device, pursuant to part 15 of the FCC Rules. These limits are designed to provide reasonable protection against harmful interference in a residential installation. This equipment generates uses and can radiate radio frequency energy and, if not installed and used in accordance with the instructions, may cause harmful interference to radio communications. However, there is no guarantee that interference will not occur in a particular installation. If this equipment does cause harmful interference to radio or television reception, which can be determined by turning the equipment off and on, the user is encouraged to try to correct the interference by one or more of the following measures:

- Reorient or relocate the receiving antenna.
- Increase the separation between the equipment and receiver.
- Connect the equipment into an outlet on a circuit different from that to which the receiver is connected.
- Consult the dealer or an experienced radio/TV technician for help.

This equipment complies with FCC radiation exposure limits set forth for an uncontrolled environment. This equipment should be installed and operated with minimum distance 20cm between the radiator & your body.