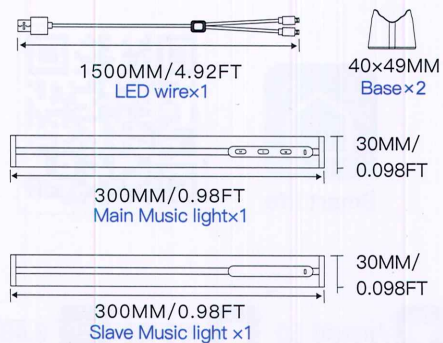


III 2 Pack

Product Parameter

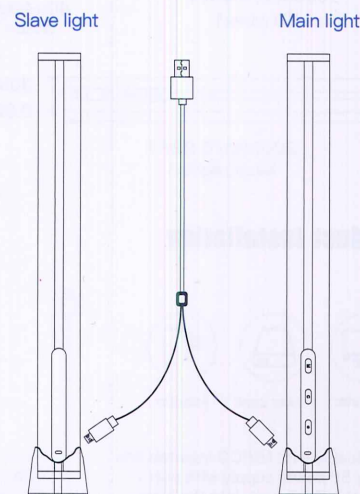
Working voltage: 5V
Working current: 1A
Rated power: 5W±0.5W
Product weight: 430G
Product size: L300xW30xH30mm

Product Specifications

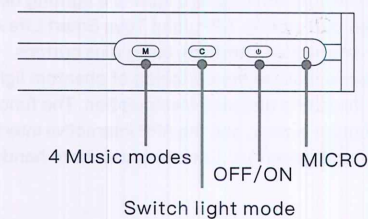


Product Installation

⚠ The Main light transmits the signal to the slave



Key Description



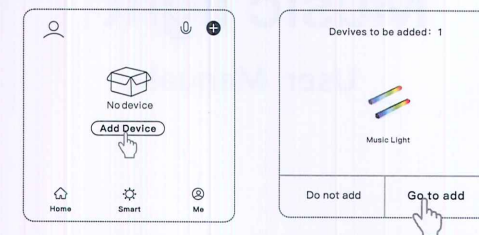
1. OFF/ON: click to turn on and off the light, long press for 5S to enter the red light, Blink the pairing of the mobile to realize APP control.
2. C : Click to switch 10 kinds of scene modes.
3. M : Click to switch between 4 music modes.
4. MICRO: Power interface micro port, input voltage DC5V.

How to connect to the app

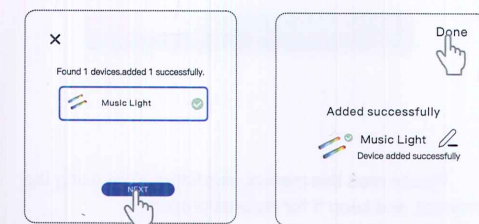
1. Power on the controller and the corresponding light bar (ensure that the Bluetooth of the mobile phone is turned on);
2. Long press the controller switch button and wait for 10 seconds to enter the light flashes quickly (3 times per second)

3. The light flashes and the connection is successful, waiting for the network distribution;
4. Open the mobile smart APP operation as shown below:

- ①Open the mobile smart life APP, Click to add a device;
- ②Automatic discovery, music atmosphere light;



- ③Check the music atmosphere light and click Next;
- ④The distribution network is completed;



Music light

User Manual



Please read this manual carefully before using the product, and keep it for records properly.

Product Description

The desktop atmosphere light is a lighting device controlled by a mobile APP. Joint Tuya Smart Life APP to enter interactive interface, using plus buttons. Key control mode realizes the switching of phantom lights to meet the user's distance Manipulation. The function of each button is clear, and the APP interactive interface is simple and generous. Let users use more handy.

Product Features

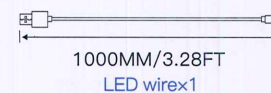
- Mobile APP control
- Music mode
- Timed
- USB interface

1 Pack

Product Parameter

Working voltage: 5V
Working current: 0.5A
Rated power: 2.5W
Product weight: 190G
Product size: L300xW30xH30mm

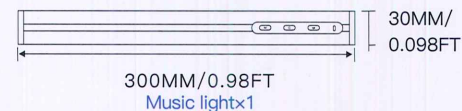
Product Specifications



1000MM/3.28FT
LED wirex1



40x49MM
Base x1



300MM/0.98FT
Music lightx1

Product Installation



Computer



Power bank



Adapter

- ⚠ USB cable with MIRCO inserted into
Only 5V power supply with port ;
Insert MIRCO port into the lamp
interface position.

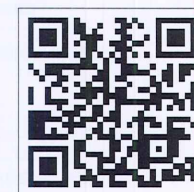


Note

1. The Music light is powered by the USB to MIRCO interface, Power supply DC5V/1A;
2. APP sharing function, when the main sharing account is not within the connection range or When Bluetooth is turned off, the shared account can realize device control.



Smart life



Android 5.0



iOS 10.0



2.4Ghz

FCC WARNING

This device complies with part 15 of the FCC Rules. Operation is subject to the following two conditions: (1) this device may not cause harmful interference, and (2) this device must accept any interference received, including interference that may cause undesired operation.

Any changes or modifications not expressly approved by the party responsible for compliance could void the user's authority to operate the equipment.

NOTE: This equipment has been tested and found to comply with the limits for a Class B digital device, pursuant to Part 15 of the FCC Rules. These limits are designed to provide reasonable protection against harmful interference in a residential installation. This equipment generates, uses and can radiate radio frequency energy and, if not installed and used in accordance with the instructions, may cause harmful interference to radio communications. However, there is no guarantee that interference will not occur in a particular installation.

If this equipment does cause harmful interference to radio or television reception, which can be determined by turning the equipment off and on, the user is encouraged to try to correct the interference by one or more of the following measures:

- Reorient or relocate the receiving antenna.
- Increase the separation between the equipment and receiver.
- Connect the equipment into an outlet on a circuit different from that to which the receiver is connected.
- Consult the dealer or an experienced radio/TV technician for help.

To maintain compliance with FCC's RF Exposure guidelines, This equipment should be installed and operated with minimum distance between 20cm the radiator your body: Use only the supplied antenna.