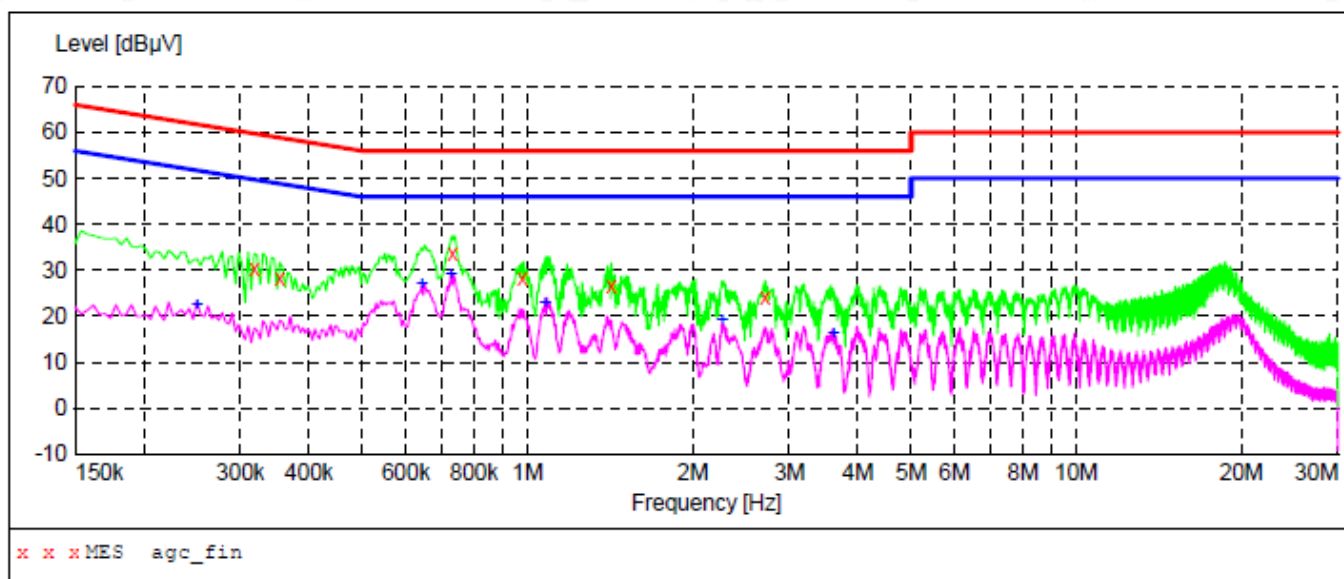


12.5. TEST RESULT OF LINE CONDUCTED EMISSION TEST

Line Conducted Emission Test Line 1-L



MEASUREMENT RESULT: "agc_fin"

2020/7/29 9:10

Frequency MHz	Level dBμV	Transd dB	Limit dBμV	Margin dB	Detector	Line	PE
0.318000	30.50	9.3	60	29.3	QP	L1	GND
0.354000	28.40	9.3	59	30.5	QP	L1	GND
0.730000	33.60	9.3	56	22.4	QP	L1	GND
0.978000	28.20	9.3	56	27.8	QP	L1	GND
1.422000	26.70	9.3	56	29.3	QP	L1	GND
2.710000	24.30	9.4	56	31.7	QP	L1	GND

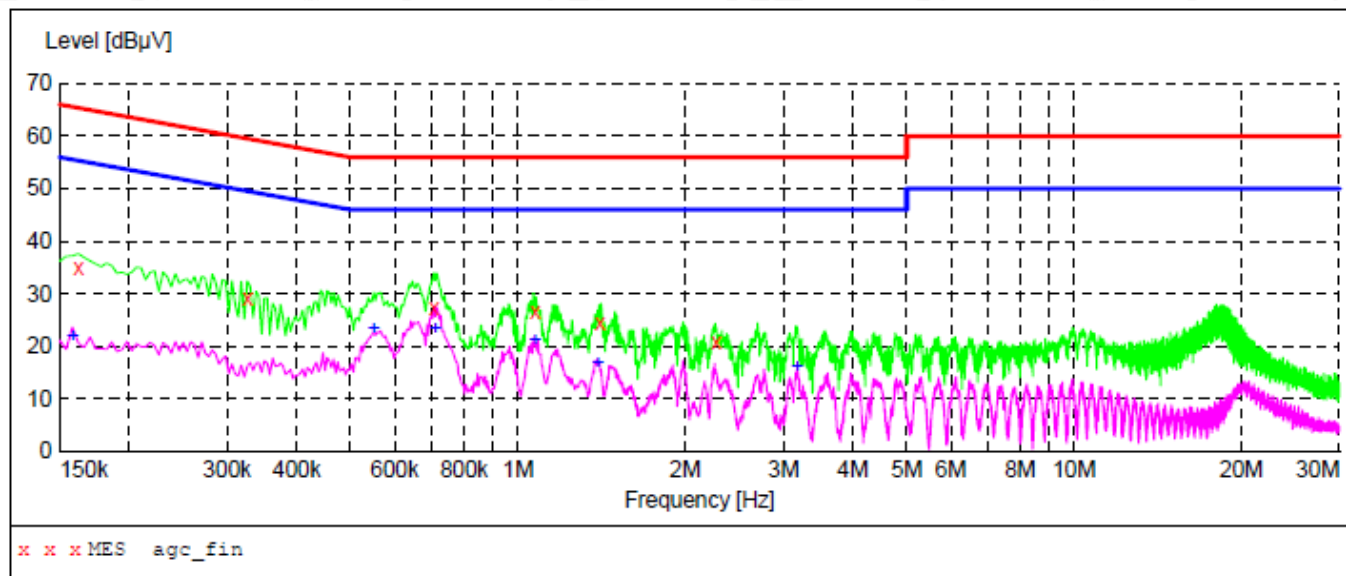
MEASUREMENT RESULT: "agc_fin2"

2020/7/29 9:10

Frequency MHz	Level dBμV	Transd dB	Limit dBμV	Margin dB	Detector	Line	PE
0.250000	22.50	9.3	52	29.3	AV	L1	GND
0.642000	27.00	9.3	46	19.0	AV	L1	GND
0.726000	29.10	9.3	46	16.9	AV	L1	GND
1.078000	22.80	9.3	46	23.2	AV	L1	GND
2.266000	18.90	9.3	46	27.1	AV	L1	GND
3.606000	16.40	9.4	46	29.6	AV	L1	GND



Line Conducted Emission Test Line 2-N



MEASUREMENT RESULT: "agc_fin"

2020/7/29 8:59

Frequency MHz	Level dBμV	Transd dB	Limit dBμV	Margin dB	Detector	Line	PE
0.162000	35.10	9.3	65	30.3	QP	N	GND
0.326000	29.20	9.3	60	30.4	QP	N	GND
0.706000	27.30	9.3	56	28.7	QP	N	GND
1.074000	26.60	9.3	56	29.4	QP	N	GND
1.402000	24.50	9.3	56	31.5	QP	N	GND
2.270000	20.80	9.3	56	35.2	QP	N	GND

MEASUREMENT RESULT: "agc_fin2"

2020/7/29 8:59

Frequency MHz	Level dBμV	Transd dB	Limit dBμV	Margin dB	Detector	Line	PE
0.158000	21.90	9.3	56	33.7	AV	N	GND
0.550000	23.50	9.3	46	22.5	AV	N	GND
0.710000	23.30	9.3	46	22.7	AV	N	GND
1.074000	21.10	9.3	46	24.9	AV	N	GND
1.390000	16.80	9.3	46	29.2	AV	N	GND
3.182000	15.90	9.4	46	30.1	AV	N	GND



APPENDIX A: PHOTOGRAPHS OF TEST SETUP

CONDUCTED EMISSION TEST SETUP



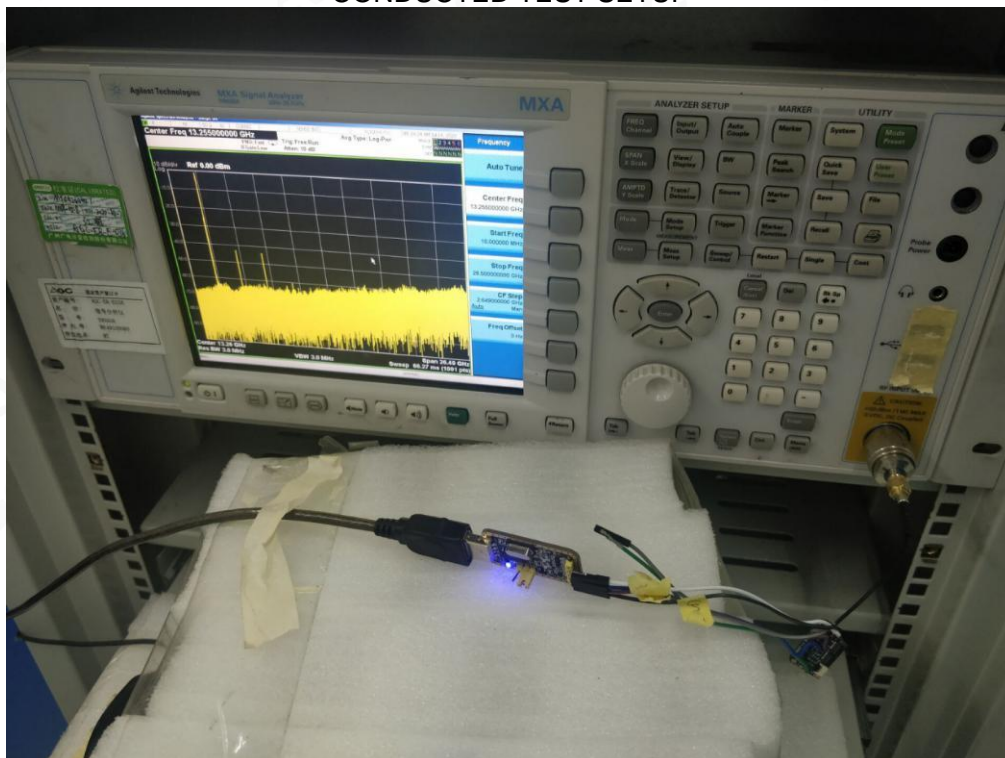
RADIATED EMISSION TEST SETUP BELOW 1GHZ



RADIATED EMISSION TEST SETUP ABOVE 1GHZ



CONDUCTED TEST SETUP



APPENDIX B: PHOTOGRAPHS OF EUT

TOTAL VIEW OF EUT



TOP VIEW OF EUT



BOTTOM VIEW OF EUT



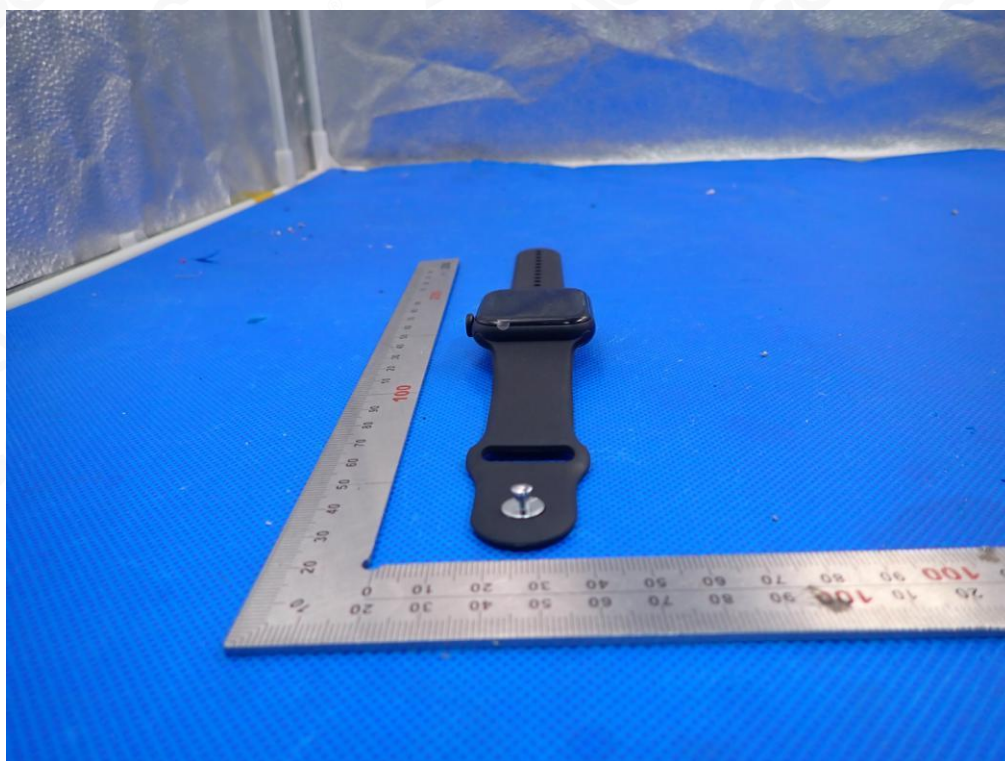
FRONT VIEW OF EUT



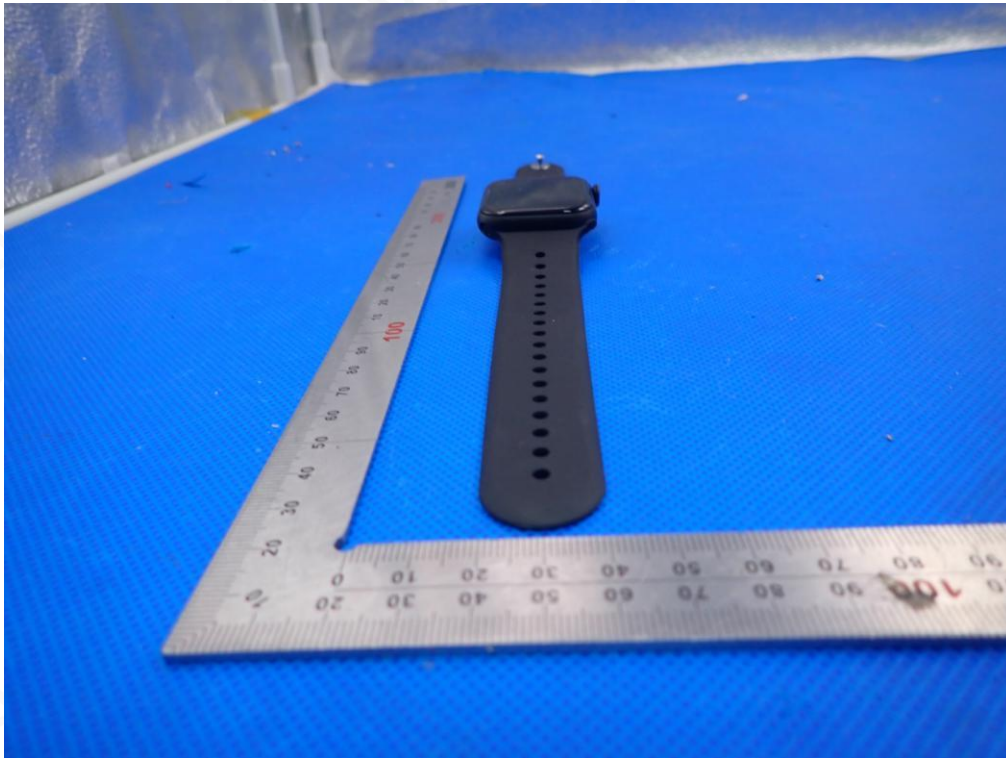
BACK VIEW OF EUT



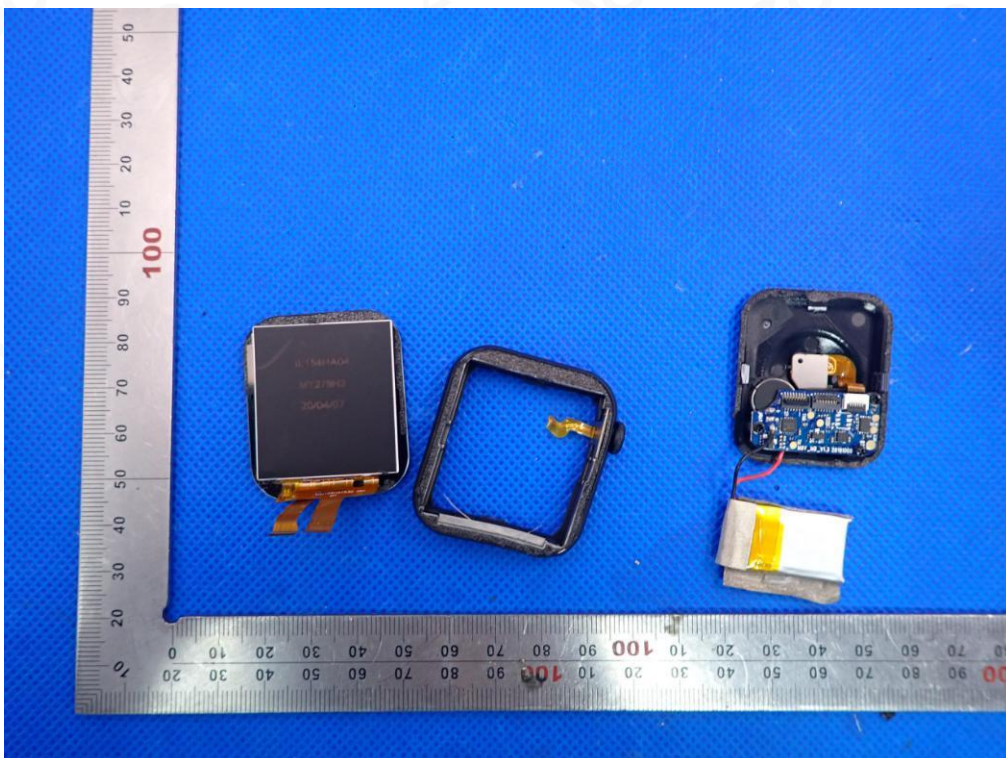
LEFT VIEW OF EUT



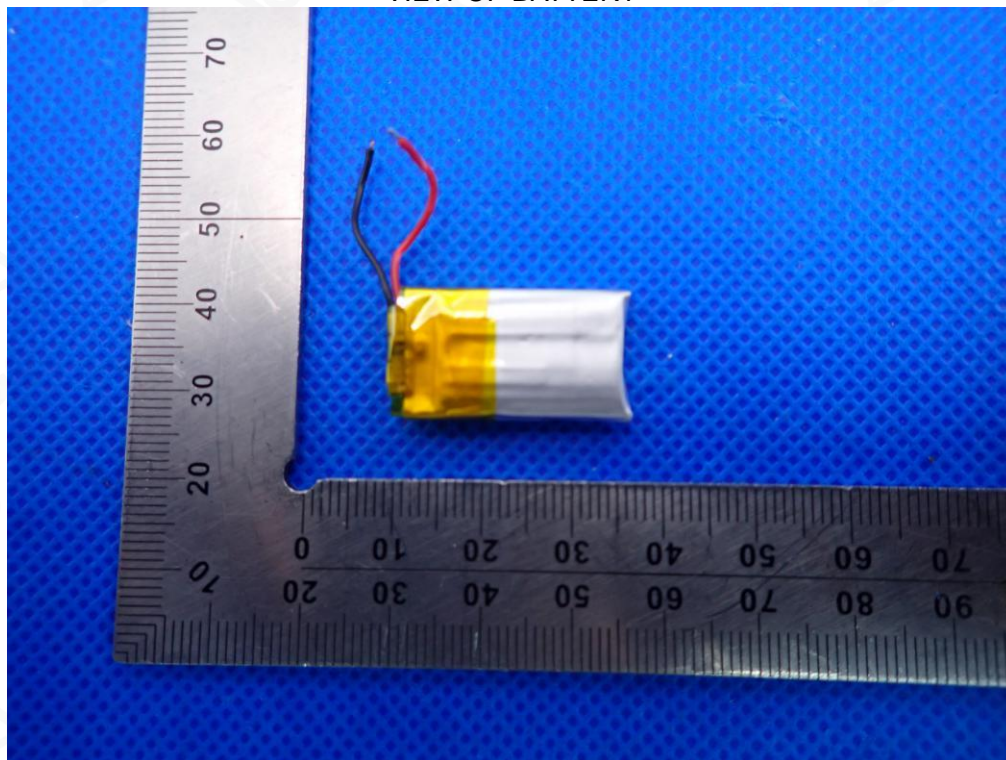
RIGHT VIEW OF EUT



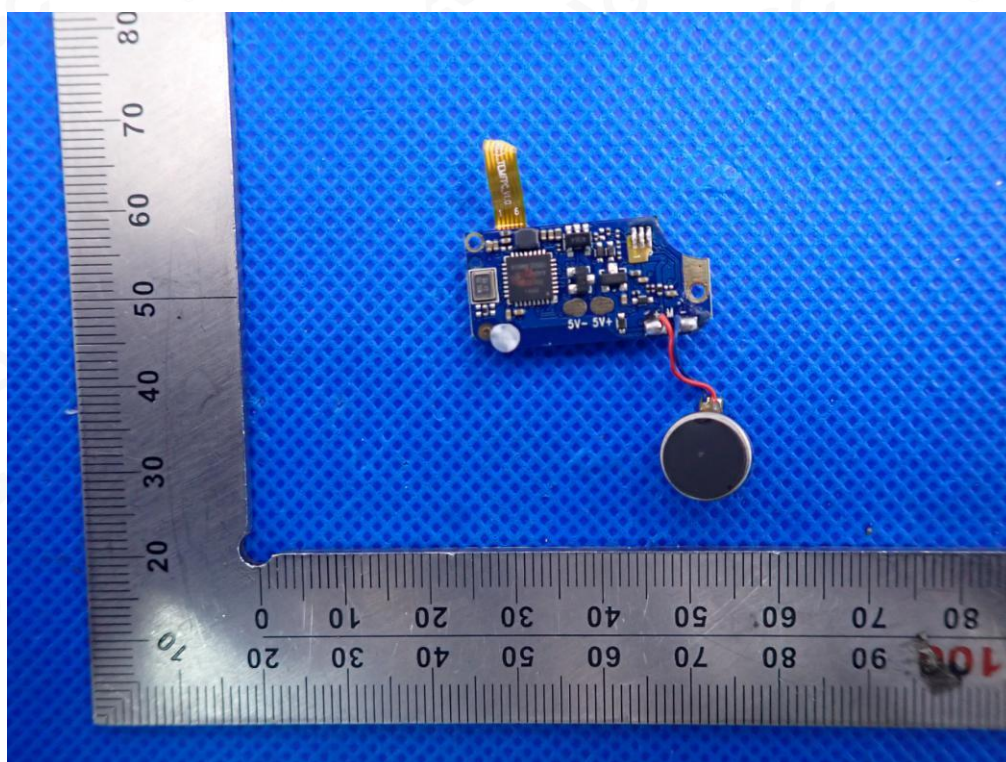
OPEN VIEW OF EUT



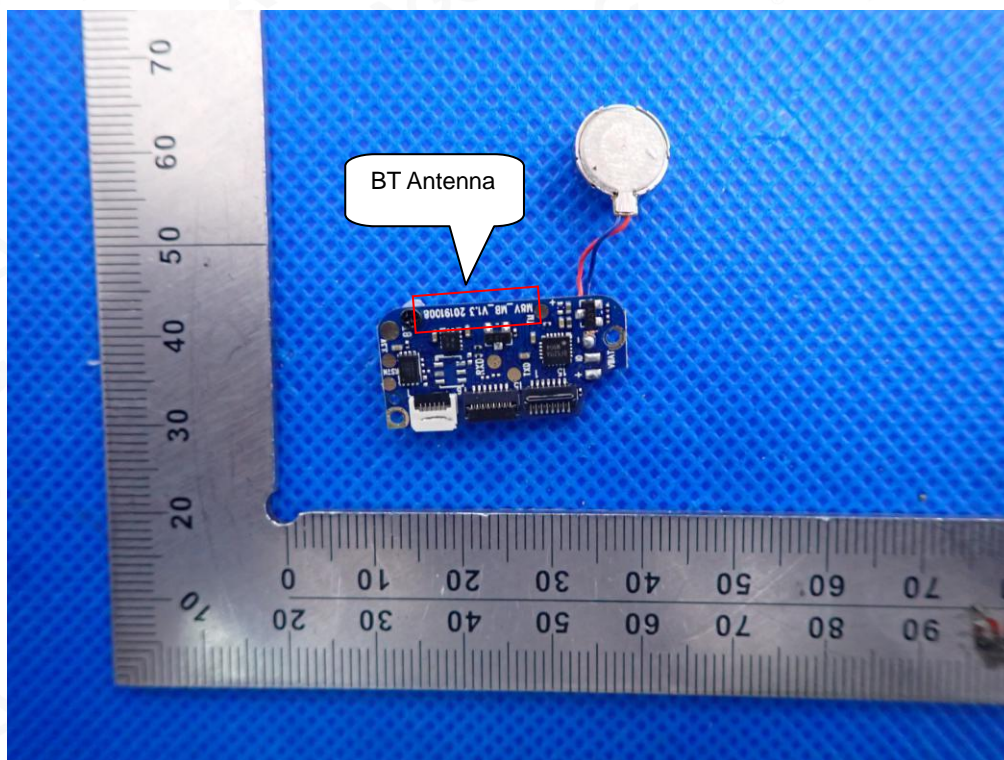
VIEW OF BATTERY



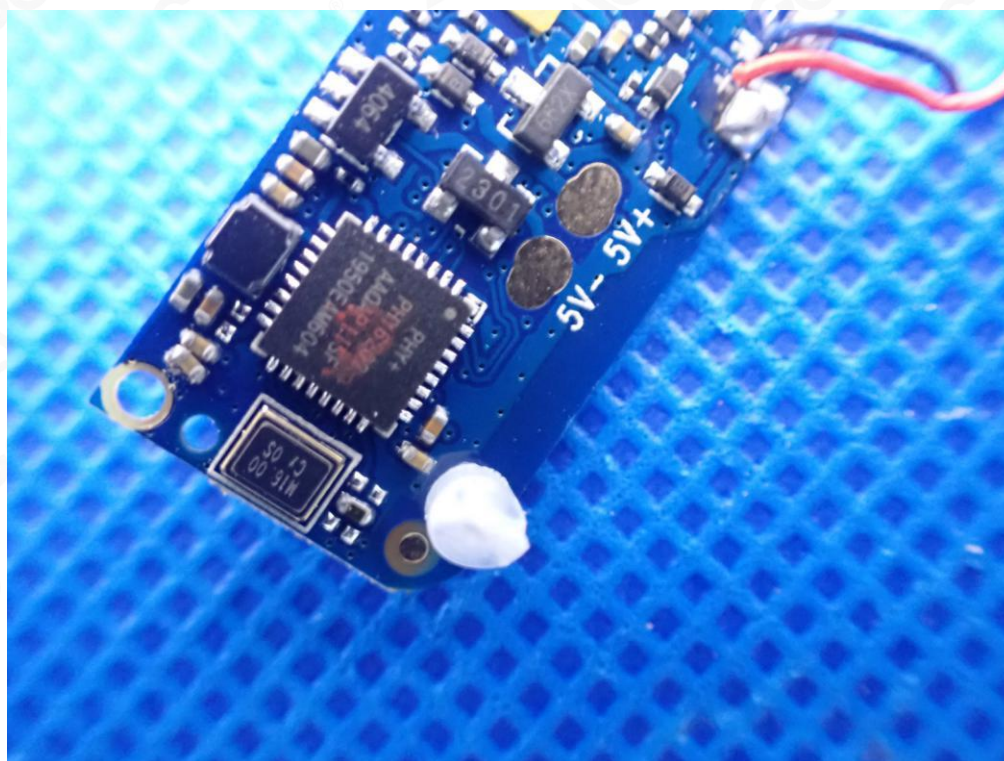
INTERNAL VIEW OF EUT-1



INTERNAL VIEW OF EUT-2



INTERNAL VIEW OF EUT-3



----END OF REPORT----