



# SAR MEASUREMENT REPORT

---

**FCC ID:** 2ATRW-A7B10

**Applicant:** Qingdao Pico Technology Co., Ltd.

**Application Type:** Certification

**Product:** VR All-In-One Headset

**Model No.:** A7B10

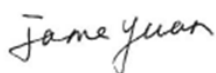
**Brand Name:** 

**FCC Rule Part(s):** FCC 47 CFR Part 2.1093

**Test Procedure(s):** IEEE 1528:2013; IEEE C95.1- 2005;  
KDB 447498 D01v06; KDB 865664 D01v01r04;  
KDB 248227 D01v02r02

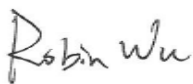
**Test Date:** August 19 ~ 20, 2019

**Reviewed By:**



( Jame Yuan )

**Approved By:**



( Robin Wu )



The test results relate only to the samples tested.

This equipment has been shown to be capable of compliance with the applicable technical standards as indicated in the measurement report and was tested in accordance with the measurement procedures specified in IEEE1528, KDB 447498 and KDB 865664. Test results reported herein relate only to the item(s) tested.

The test report shall not be reproduced except in full without the written approval of MRT Technology (Suzhou) Co., Ltd.



## Revision History

Report No.	Version	Description	Issue Date	Note
1907RSU061-U7	Rev. 01	Initial Report	09-04-2019	Valid

## CONTENTS

Description	Page
<b>§2.1033 General Information .....</b>	<b>5</b>
<b>1. Introduction.....</b>	<b>6</b>
1.1. Scope .....	6
1.2. MRT Test Location .....	6
<b>2. Product Information.....</b>	<b>7</b>
2.1. General Description for EUT .....	7
2.2. Product Specification Subjective to this Report.....	7
2.3. Description of Available Antennas .....	8
2.4. Ancillary Equipment .....	8
<b>3. Summary of Test Result .....</b>	<b>9</b>
3.1. Test Standards.....	9
3.2. Environment Condition .....	9
3.3. RF Exposure Limits .....	9
3.4. Test Result Summary.....	9
<b>4. Specific Absorption Rate (SAR).....</b>	<b>10</b>
4.1. Introduction.....	10
4.2. Definition .....	10
<b>5. DASY6 Measurement System .....</b>	<b>11</b>
5.1. Introduction.....	11
5.2. DASY6 Measurement System Diagram .....	11
5.3. System Components Details.....	12
<b>6. The SAR Measurement Procedure .....</b>	<b>23</b>
6.1. Measurement Process Diagram.....	23
6.2. Test Position Definition .....	24
6.3. Test Procedure .....	26
<b>7. System Verificaiton.....</b>	<b>29</b>
7.1. Tissue Check.....	29
7.2. System Check .....	31
<b>8. Analysis and Results.....</b>	<b>33</b>
8.1. Antenna Location.....	33
8.2. Conducted Power .....	35

8.3.	SAR Exclusion Analysis .....	41
8.4.	Required Configurations of SAR Test.....	47
8.5.	SAR Test Results.....	48
8.6.	Estimated SAR Calculation.....	49
<b>9.</b>	<b>Simultaneous Transmission Analysis .....</b>	<b>50</b>
<b>10.</b>	<b>Test Equipment Used .....</b>	<b>51</b>
<b>11.</b>	<b>Measurement Uncertainty .....</b>	<b>52</b>
	<b>Annex A - System Check Result .....</b>	<b>54</b>
	<b>Annex B - Test Data Plots.....</b>	<b>58</b>
	<b>Annex C - SAR Test Setup Photos.....</b>	<b>60</b>
	<b>Annex D - EUT External Photos .....</b>	<b>61</b>
	<b>Annex E - Equipment Calibration Report .....</b>	<b>62</b>

## §2.1033 General Information

<b>Applicant:</b>	Qingdao Pico Technology Co., Ltd.
<b>Applicant Address:</b>	4 Floor, 3 Building, Qingdao Research Institute of Beihang University, No. 393 Songling Road, Laoshan District, Qingdao, China
<b>Manufacturer:</b>	Qingdao Pico Technology Co., Ltd.
<b>Manufacturer Address:</b>	4 Floor, 3 Building, Qingdao Research Institute of Beihang University, No. 393 Songling Road, Laoshan District, Qingdao, China
<b>Test Site:</b>	MRT Technology (Suzhou) Co., Ltd
<b>Test Site Address:</b>	D8 Building, No.2 Tian'edang Rd., Wuzhong Economic Development Zone, Suzhou, China
<b>Test Device Serial No.:</b>	N/A <input type="checkbox"/> Production <input checked="" type="checkbox"/> Pre-Production <input type="checkbox"/> Engineering

### Test Facility / Accreditations

Measurements were performed at MRT Laboratory located in Tian'edang Rd., Suzhou, China.

- MRT facility is a FCC registered (MRT Reg. No. 893164) test facility with the site description report on file and has met all the requirements specified in Section 2.948 of the FCC Rules.
- MRT facility is an IC registered (MRT Reg. No. 11384A-1) test laboratory with the site description on file at Industry Canada.
- MRT facility is a VCCI registered (R-20025, G-20034, C-20020, T-20020) test laboratory with the site description on file at VCCI Council.
- MRT Lab is accredited to ISO 17025 by the American Association for Laboratory Accreditation (A2LA) under the American Association for Laboratory Accreditation Program (A2LA Cert. No. 3628.01) in EMC, Telecommunications, Radio and SAR testing.



## 1. Introduction

### 1.1. Scope

Measurement and determination of specific absorption rate (SAR) of radio frequency devices including intentional and/or unintentional radiators is compliance with the technical rules and regulations of the Federal Communications Commission.

### 1.2. MRT Test Location

The map below shows the location of the MRT LABORATORY, its proximity to the Taihu Lake. These measurement tests were conducted at the MRT Technology (Suzhou) Co., Ltd. Facility located at D8 Building, No.2 Tian'edang Rd., Wuzhong Economic Development Zone, Suzhou, China. The measurement facility compliant with the test site requirements specified in ANSI C63.4-2014.



## 2. Product Information

### 2.1. General Description for EUT

Product Name	VR All-In-One Headset
Model No.	A7B10
EUT Type	Portable Device
Exposure Category	General Population/Uncontrolled Exposure

### 2.2. Product Specification Subjective to this Report

Wi-Fi Specification (Qualcomm Chipset)	
Frequency Range	<u>For 2.4GHz Wi-Fi</u> 802.11b/g/n-HT20: 2412 ~ 2462 MHz <u>For 5GHz Wi-Fi</u> 802.11a /n-HT20/ac-VHT20: 5180~5240 MHz, 5260~5320 MHz, 5500~5720 MHz, 5745~5825 MHz 802.11n-HT40/ac-VHT40: 5190~5230 MHz, 5270~5310 MHz, 5510~5710 MHz, 5755~5795 MHz 802.11ac-VHT80/ac-VHT80: 5210 MHz, 5290 MHz, 5530 MHz, 5610 MHz, 5690 MHz, 5775 MHz
Channel Number	<u>For 2.4GHz Wi-Fi</u> 802.11b/g/n-HT20: 11 <u>For 5GHz Wi-Fi</u> 802.11a/n-HT20/ac-VHT20: 25 802.11n-HT40/ac-VHT40: 12 802.11ac-VHT80/ac-VHT80: 6
Type of Modulation	802.11b: DSSS 802.11a/g/n/ac: OFDM
Data Rate	802.11b: 1/2/5.5/11Mbps 802.11a/g: 6/9/12/18/24/36/48/54Mbps 802.11n: up to 300Mbps 802.11ac: up to 866.6Mbps

Bluetooth Specification (Qualcomm Chipset)	
Frequency Range	2400MHz~ 2483.5MHz
Channel Number	For Bluetooth: 79 For BT-LE: 40
Channel Spacing	For Bluetooth: 1MHz For BT-LE: 2MHz
Type of Modulation	1Mbps (GFSK), 2Mbps (Pi/4 DQPSK), 3Mbps (8DPSK)

Bluetooth Specification (Nordic Chipset)	
Frequency Range	2400MHz~ 2483.5MHz
Channel Number	BT-LE: 40
Channel Spacing	Bluetooth: 1MHz
Type of Modulation	1Mbps (GFSK)

### 2.3. Description of Available Antennas

Operating Condition	2.4GHz Wi-Fi: 802.11b/g/n for antenna 1+2 (2Tx, 2Rx) 5GHz Wi-Fi: 802.11a/n/ac for antenna 1+2 (2Tx, 2Rx) Bluetooth BR/EDR/LE for antenna 1 (1Tx, 1Rx) Bluetooth LE for antenna 3 (1Tx, 1Rx)	
Antenna Type	FPC Antenna	
Antenna Gain	Antenna 1	2400 ~ 2483.5MHz: 2.81dBi 5150 ~ 5850MHz: 4.91dBi
	Antenna 2	2400 ~ 2483.5MHz: 3.11dBi 5150 ~ 5850MHz: 4.39dBi
	Antenna 3	2400 ~ 2483.5MHz: 3.54dBi
Simultaneously Transmitting Scenarios	WLAN (Antenna 1 + 2) transmit simultaneously with Bluetooth LE (Antenna 3)	

### 2.4. Ancillary Equipment

Ancillary Equipment	Charger
Model No.	A138A-120150U-US2
Input	100-240V ~ 50/60Hz, 0.5A
Output	5Vdc, 2.5A OR 9Vdc, 2.0A OR 12Vdc, 1.5A



### 3. Summary of Test Result

#### 3.1. Test Standards

No.	Identity	Document Title
1	47 CFR Part 2.1093	Radiofrequency radiation exposure evaluation: portable devices
2	IEEE 1528-2013	IEEE Recommended Practice for Determining the Peak Spatial-Average Specific Absorption Rate (SAR) in the Human Head from Wireless Communications Devices: Measurement Techniques
3	IEEE C95.1-2005	IEEE Standard for Safety Levels with Respect to Human Exposure to Radio Frequency Electromagnetic Fields, 3 kHz to 300 GHz
4	KDB 447498 D01 v06	General RF Exposure Guidance
5	KDB 865664 D01 v01r04	SAR Measurement 100 MHz to 6 GHz
6	KDB 865664 D02 v01r02	RF Exposure Reporting
7	KDB 248227 D01 v02r02	SAR Guidance for IEEE 802.11 (Wi-Fi) Transmitter

#### 3.2. Environment Condition

Ambient Temperature	20.5°C~24.0°C
Temperature of Simulant	20.0°C~23.5°C
Relative Humidity	38%RH ~55%RH

#### 3.3. RF Exposure Limits

Human Exposure	Basic restrictions for electric, magnetic and electromagnetic fields. (Unit in mW/g or W/kg)
Spatial Peak SAR <sup>1</sup> (Head and Body)	1.60
Spatial Average SAR <sup>2</sup> (Whole Body)	0.08
Spatial Peak SAR <sup>3</sup> (Arms and Legs)	4.00

##### Notes:

1. The Spatial Peak value of the SAR averaged over any 1gram of tissue (defined as a tissue volume in the shape of a cube) and over the appropriate averaging time.
2. The Spatial Average value of the SAR averaged over the whole body.
3. The Spatial Peak value of the SAR averaged over any 1 gram of tissue (defined as a tissue volume in the shape of a cube) and over appropriate averaging time.

#### 3.4. Test Result Summary

##### Worst SAR List

Configuration	Highest Stand alone Reported 1g-SAR (W/kg)	Highest Simultaneously 1g-SAR (W/kg)
5GHz WLAN MIMO + Bluetooth Ant 2	N/A	0.63

## 4. Specific Absorption Rate (SAR)

### 4.1. Introduction

SAR is related to the rate at which energy is absorbed per unit mass in an object exposed to a radio field. The SAR distribution in a biological body is complicated and is usually carried out by experimental techniques or numerical modeling. The standard recommends limits for two tiers of groups, occupational /controlled and general population/uncontrolled, based on a person's awareness and ability to exercise control over his or her exposure. In general, occupational/controlled exposure limits are higher than the limits for general population/uncontrolled.

### 4.2. Definition

The SAR in the tissue-equivalent liquid can be determined by the rate of temperature increase or by E-field measurements, according to Formulas (1) or (2):

$$SAR = \frac{\sigma E^2}{\rho} \quad (1)$$

$$SAR = c_h \left. \frac{dT}{dt} \right|_{t=0} \quad (2)$$

where

- SAR is the specific absorption rate in W/kg;
- E is the rms value of the electric field strength in the tissue medium in V/m;
- $\sigma$  is the electrical conductivity of the tissue medium in S/m;
- $\rho$  is the mass density of the tissue medium in kg/m<sup>3</sup>;
- $c_h$  is the specific heat capacity of the tissue medium in J/(kg K);
- $\left. \frac{dT}{dt} \right|_{t=0}$  is the initial time derivative of temperature in the tissue medium in K/s.

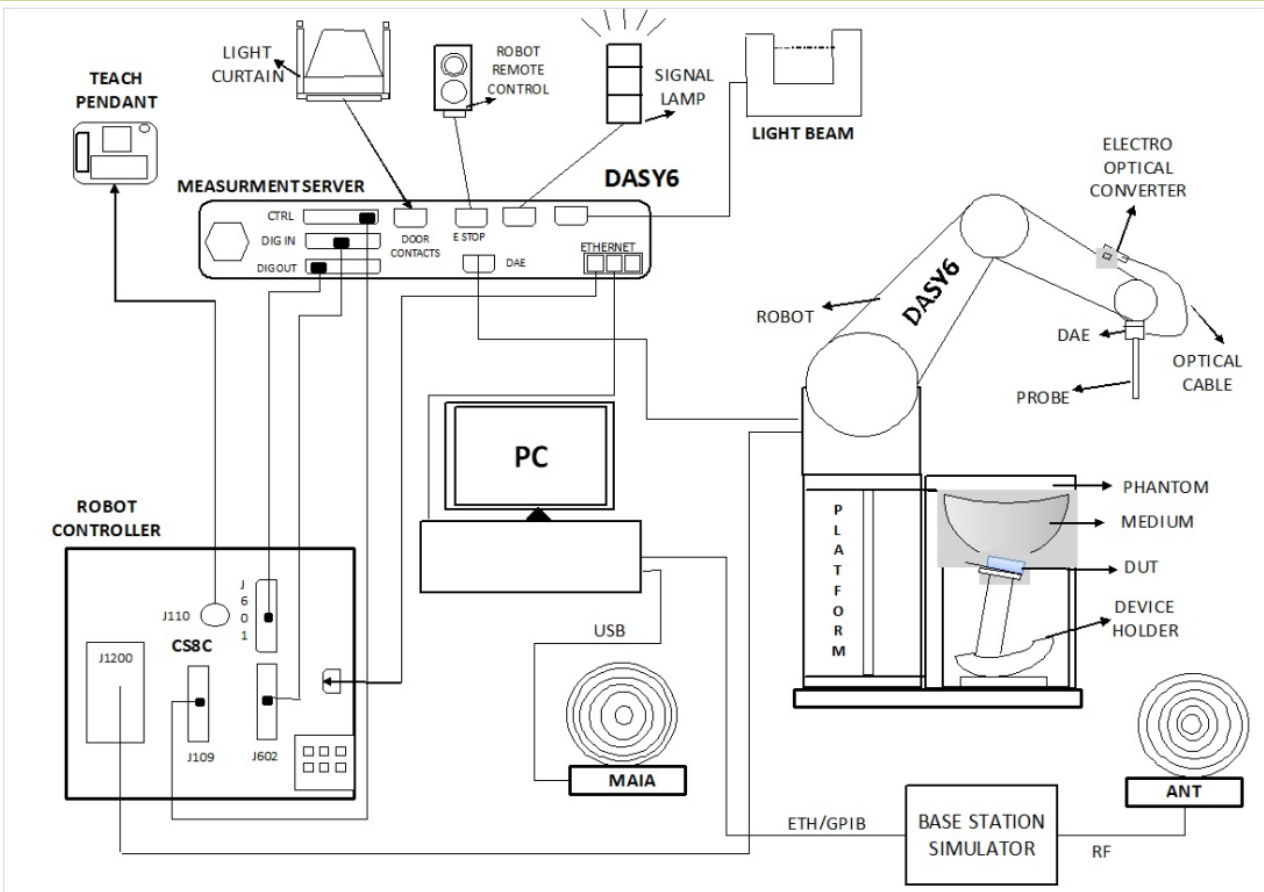
## 5. DASY6 Measurement System

### 5.1. Introduction

DASY6 is the latest generation of the Dosimetric Assessment System optimized for specific absorption rate (SAR) measurements, SAR compliance. DASY6 builds on the power of our industry - leading dosimetric and near-field evaluation system, DASY52. Running on a significantly more robust platform and a more powerful measurement server, DASY6 offers much faster scanning with no sacrifice of measurement precision. All hardware and software are fully compatible with DASY52. The new system seamlessly integrates two software solutions, the novel cDASY V6.6 - optimized for SAR compliance testing to significantly reduce SAR assessment costs - and the widely used DASY V5.2 for generalized near-field evaluations with maximized flexibility.

### 5.2. DASY6 Measurement System Diagram

The DASY6 system in cDASY6/DASY5 V5.2 SAR Configuration is shown below:



The System consist of the following components:

DASY6 Measurement Server, Data Acquisition Electronics (DAE), Probes, Light-Beam Unit, Phantoms, Media, Device Holder for SAM-Twin Phantom, Laptop Extension Kit to Mounting Device, Robot System Platform & Pedestal, Verification of the Parameters with the Dielectric Assessment Kit (DAK), Modulation and Interference Analyzer (MAIA), Omni-Directional Ultra-Wideband Antenna (ANT), cDASY6 software, DASY5 NEO software and SEMCAD data evaluation software.

### 5.3. System Components Details

#### DASY6 Platforms MP6E-TX60L

MP6E-TX60L platform is a compact cost-effective platform based on TX60L. It consists of:

- a stable non-metallic platform for the TX60L robot
- a frame for two standard-size phantoms (1.0 × 0.5 m)
- a frame for one half-size phantom (0.5 × 0.5 m)

It includes two easily moveable trolleys for the phone and tablet/computer positioner and two platforms for positioning dipoles and other antennas.



Material	The beams consist of a composite of wood and epoxy (permittivity of 3.3 and loss tangent of <0.07)
Size	The footprint of the platform is 1590 mm × 1060 mm.

#### Robots -TX60L

The MRT DASY6 system uses the high-precision industrial robots TX60L from Staubli SA (France). The TX robot family - the successor of the well-known RX robot family - continues to offer the features important for DASY6 applications:

- High precision (repeatability 0.02mm)
- High reliability (industrial design)
- Low maintenance costs (virtually maintenance-free as all gears are direct drive, no belt drives)
- Jerk-free straight movements (brushless synchron motors, no stepper motors)
- Low extremely low frequency (ELF) interference (motor control fields are shielded by the closed metallic construction)

The robots are controlled by the Staubli CS8c robot controllers. All information regarding the use and maintenance of the robot arm and the robot controller is provided on CDs delivered with the robot. Paper manuals are available directly from Staubli upon request.



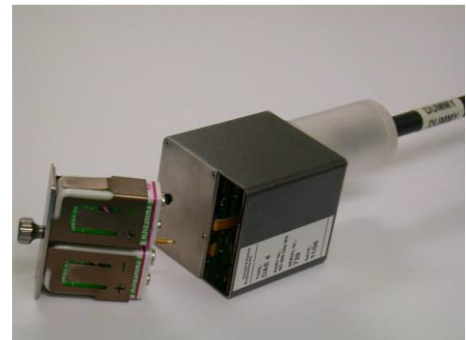
### DASY6 Measurement Server

The DASY6 measurement server is based on a PC/104 CPU board with a 400MHz intel ULV Celeron, 128MB chip-disk and 128MB RAM. The necessary circuits for communication with the DAE4 electronics box, as well as the 16-bit AD converter system for optical detection and digital I/O interface are contained on the DASY6 I/O board, which is directly connected to the PC/104 bus of the CPU board. The measurement server performs all real-time data evaluations of field measurements and surface detection, controls robot movements, and handles safety operations.



### Data Acquisition Electronics (DAE)

The data acquisition electronics (DAE4) consist of a highly sensitive electrometer-grade preamplifier with auto-zeroing, a channel and gain-switching multiplexer, a fast 16-bit AD-converter, and a command decoder with a control logic unit. Transmission to the measurement server is accomplished through an optical downlink for data and status information, as well as an optical uplink for commands and the clock.



## Probes

### E-Field Probe(EX3DV4)

The SAR measurement is conducted with the dosimetric probe manufactured by SPEAG. The probe is specially designed and calibrated for use in liquid with high permittivity. The dosimetric probe has special calibration in liquid at different frequency. SPEAG conducts the probe calibration in compliance with international and national standards (e.g. IEEE 1528, EN 62209-1, IEC 62209, etc.) under ISO 17025.

#### Construction:

Symmetric design with triangular core Built-in shielding against static charges PEEK enclosure material (resistant to organic solvents, e.g., DGBE)

Frequency: 4 MHz ~ 10 GHz

Linearity:  $\pm 0.2$  dB (30 MHz ~ 10 GHz)

#### Directivity:

$\pm 0.1$  dB in TSL (rotation around probe axis)

$\pm 0.3$  dB in TSL (rotation normal to probe axis)

Dynamic Range: 10  $\mu$ W/g to 100 mW/g; Linearity:  $\pm 0.2$  dB (noise: typically < 1  $\mu$ W/g)

#### Dimensions:

Overall length: 337 mm (Tip: 20 mm)

Tip diameter: 2.5 mm (Body: 12 mm)

Typical distance from probe tip to dipole centers: 1 mm

#### Applications:

High precision dosimetric measurements in any exposure scenario (e.g., very strong gradient fields); the only probe that enables compliance testing for frequencies up to 6 GHz with precision of better than 30%.



### MSTV1 (Mother Scan Teaching V1) Electronics & TP6V2 (Teaching Probe 6V2) Probe

MSTV1 (Mother Scan Teaching V1) electronics together with the TP6V2 (Teaching Probe 6V2) probe is used for mother scan of DASY6 system. This probe uses a 3D Renishaw LP2 sensor which ensures accurate detection of any shape and a measurement repeatability of 8  $\mu$ m.



## Light-Beam Unit

The light beam switch allows automatic "tooling" of the probe. During the process, the actual position of the probe tip with respect to the robot arm, as well as the probe length and the horizontal probe offset, are measured. The software then corrects all movements within the measurement jobs, such that the robot coordinates are valid for the probe tip.



The repeatability of this process is better than 0.1 mm. If a position has been taught with an aligned probe, the same position will be reached with another aligned probe within 0.1 mm, even if the other probe has different dimensions. During probe rotations, the probe tip will keep its actual position.



## Phantoms

### SAM-Twin Phantom

The shell corresponds to the specifications of the Specific Anthropomorphic Mannequin (SAM) phantom defined in IEEE 1528 and IEC 62209-1. It enables the dosimetric evaluation of left and right hand phone usage as well as body-mounted usage at the flat phantom region. A cover prevents evaporation of the liquid. Reference markings on the phantom allow the complete setup of all predefined phantom positions and measurement grids by teaching three points with the robot.

SAM-Twin V5.0 and higher has the same shell geometry and is manufactured from the same material as SAM-Twin V4.0, but with the top structure reinforced.

Material Vinyl ester, fiberglass reinforced (VE-GF)

Liquid Compatibility The phantom shell is compatible with SPEAG tissue simulating liquids (sugar and oil based). Use of other liquids may render the phantom warranty void (see note or consult SPEAG support).

Shell Thickness  $2 \pm 0.2$  mm ( $6 \pm 0.2$  mm at ear point)

Dimensions Length: 1000 mm  
(incl. Wooden Width: 500 mm  
Support) Height: adjustable feet

Filling Volume approx. 25 liters

Support DASY6: standard-size platform slot  
DASY52 stand-alone: SPEAG standard phantom table



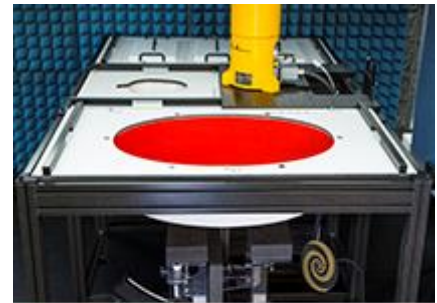


## ELI phantom

The ELI phantom is used for compliance testing of handheld and body-mounted wireless devices in the frequency range of 30 MHz to 6 GHz. ELI is fully compatible with the IEC 62209-2 standard and all known tissue simulating liquids. ELI has been optimized regarding its performance and can be integrated into our standard phantom tables. A cover prevents evaporation of the liquid. Reference markings on the phantom allow installation of the complete setup, including all predefined phantom positions and measurement grids, by teaching three points. The phantom is compatible with all SPEAG dosimetric probes and dipoles.

ELI V5.0 and higher has the same shell geometry and is manufactured from the same material as ELI V4.0, but has reinforced top structure. ELI V6.0, released in August 2014, has the same shell geometry as ELI V4.0 but offers increased longterm stability.

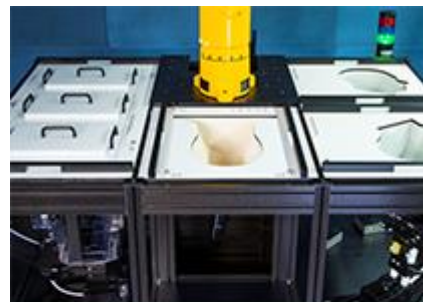
Material	Vinyl ester, fiberglass reinforced (VE-GF)
Liquid Compatibility	The phantom shell is compatible with SPEAG tissue simulating liquids (sugar and oil based). Use of other liquids may render the phantom warranty void (see note or consult SPEAG support).
Shell Thickness	$2.0 \pm 0.2$ mm (bottom plate)
Dimensions	Major axis: 600 mm Minor axis: 400 mm
Filling Volume	approx. 30 liters
Support	DASY6: standard-size platform slot DASY52 stand-alone: SPEAG standard phantom table



### SAM Face Down Phantom

The SAM Face Down Phantom V10 allows assessment of the exposure of the face and in particular the eyes for handheld devices operated in front of the face. e.g., video phones, cameras, organizers, etc. It is manufactured from high precision injection molded polypropylene. The Mounting Device for Transmitters including extensions kit can be used to position the device.

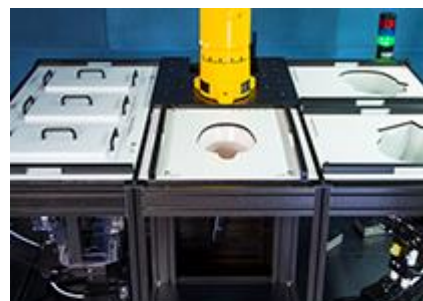
Material	Epoxy based
Liquid Compatibility	The phantom shell is compatible with SPEAG tissue simulating liquids (sugar and oil based). Use of other liquids may render the phantom warranty void (see note or consult SPEAG support).
Shell Thickness	$2 \pm 0.2$ mm (6 mm at ear point)
Head Shape	Standard compatible SAM head.



### SAM Head Stand Phantom

The SAM Head Stand Phantom V10 allows assessment of the exposure of the top-head or around-the-head wireless accessories, e.g., head-belts, etc. It is manufactured from high precision injection molded polypropylene. The Mounting Device for Transmitters including extensions kit can be used to position the device.

Material	Epoxy based
Liquid Compatibility	The phantom shell is compatible with SPEAG tissue simulating liquids (sugar and oil based). Use of other liquids may render the phantom warranty void (see note or consult SPEAG support).
Shell Thickness	$2 \pm 0.2$ mm (6 mm at ear point)
Head Shape	Standard compatible SAM head.



## Wrist Phantom

The Wrist Phantom V10 is shape-compatible with the CTIA approved OTA GFPC-V1 and optimized for SAR evaluation of watches and other wireless hand accessories.

Material	Epoxy based
Liquid Compatibility	The phantom shell is compatible with SPEAG tissue simulating liquids (sugar and oil based). Use of other liquids may render the phantom warranty void (see note or consult SPEAG support).
Shell Thickness	Shell Thickness
Wrist Shape	Design compatible with CTIA forearm.



### Device Holder for SAM-Twin Phantom

The SAR in the phantom is approximately inversely proportional to the square of the distance between the source and the liquid surface. For a source at 5mm distance, a positioning uncertainty of  $\pm 0.5\text{mm}$  would produce uncertainty in the SAR of  $\pm 20\%$ . Accurate device positioning is therefore crucial for accurate and repeatable measurements. The positions at which the devices must be measured are defined by the standards.

#### MD4HHTV5 - Mounting Device for Hand-Held Transmitters

In combination with the Twin SAM V5.0/V5.0c or ELI phantoms, the Mounting Device for Hand-Held Transmitters enables rotation of the mounted transmitter device to specified spherical coordinates. At the heads, the rotation axis is at the ear opening. Transmitter devices can be easily and accurately positioned according to IEC 62209-1, IEEE 1528, FCC, or other specifications. The device holder can be locked for positioning at different phantom sections (left head, right head, flat).

**Material:** Polyoxymethylene (POM)



#### MDA4WTV5 - Mounting Device Adaptor for Ultra Wide Transmitters

An upgrade kit to Mounting Device to enable easy mounting of wider devices like big smart-phones, e-books, small tablets, etc. It holds devices with width up to 140 mm.

**Material:** Polyoxymethylene (POM)



#### MDA4SPV6 - Mounting Device Adaptor for Smart Phones

The solid low-density MDA4SPV6 adaptor assuring no impact on the DUT radiation performance and is conform with any DUT design and shape.

**Material:** ROHACELL



### MD4LAPV5 - Mounting Device for Laptops and other Body-Worn Transmitters

In combination with the Twin SAM V5.0/V5.0c or ELI phantoms, the Mounting Device (Body-Worn) enables testing of transmitter devices according to IEC 62209-2 specifications. The device holder can be locked for positioning at a flat phantom section.

**Material:** Polyoxymethylene (POM), PET-G, Foam



### MDA4LAP - Mounting Device Adaptor for Laptops

A simple but effective and easy-to-use extension for the Mounting Device; facilitates testing of larger devices (e.g., laptops, cameras, etc.) according to IEC 62209-2; lightweight and fits easily on the upper part of the Mounting Device in place of the phone positioner. The extension is fully compatible with the Twin SAM as well as ELI and other Flat Phantoms.

**Material:** Polyoxymethylene (POM), PET-G, Foam



## Modulation and Interference Analyzer(MAIA)

MAIA is a hardware interface used to evaluate the modulation and audio interference characteristics of RF signals in the frequency range 698 - 6000 MHz. DASY6 evaluates the time-domain and frequency domain properties of the uplink signal transmitted by the DUT during SAR measurement with MAIA. MAIA uses USB powered active electronics to identify the modulation of the DUT. It can be operated over the air interface using the built-in ultra-broadband planar log spiral antenna (698 - 6000 MHz) or in conducted mode using the coaxial SMA 50 Ohm connector (300 - 6000 MHz).



To prevent damage in conducted mode due to high peak power, an external RF attenuator may be mounted. The LED on the MAIA hardware also indicates whether it is connected.

### DAK-3.5 (200MHz – 20GHz)

This precision dielectric measurement system is designed to cover the 200MHz – 20GHz frequency range with a single open-ended coaxial dielectric probe. The system uses advanced algorithms and novel hardware to measure the dielectric properties of liquids, solids, and semi-solids over a broad range of parameters. The measurement method is fast and non-destructive to the material under test.



Evaluation of reference liquids over a broad frequency range for specific absorption rate (SAR) measurements, in accordance with IEC 62209, IEEE 1528, and several federal regulations.

Evaluating Software: DAK software version 2.0

#### MRT simulating liquid

Product	Test Frequency (MHz)	Main Ingredients
HSL450	400 – 500	Water, Sucrose, NaCl
MSL450	400 – 500	Water, Sucrose, NaCl

#### Speag Broad-Band simulating liquid

Product	Test Frequency (MHz)	Main Ingredients
HBBL600-10000V6	600 – 10000	Water, Oil
MBBL600-6000V6	600 – 6000	Water, Oil

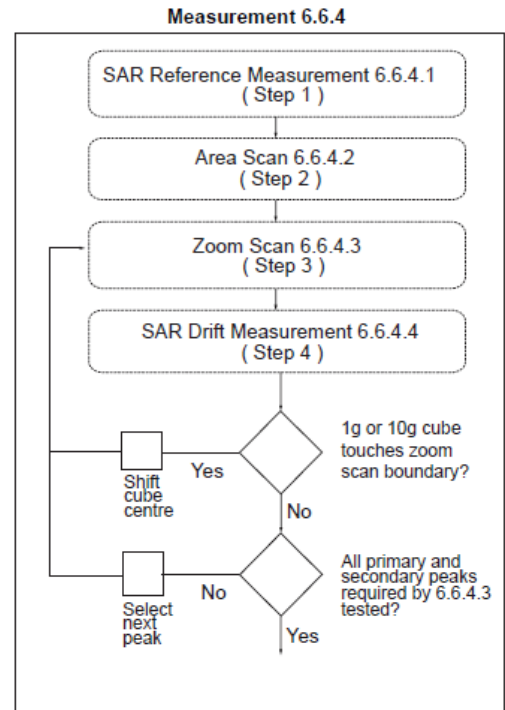
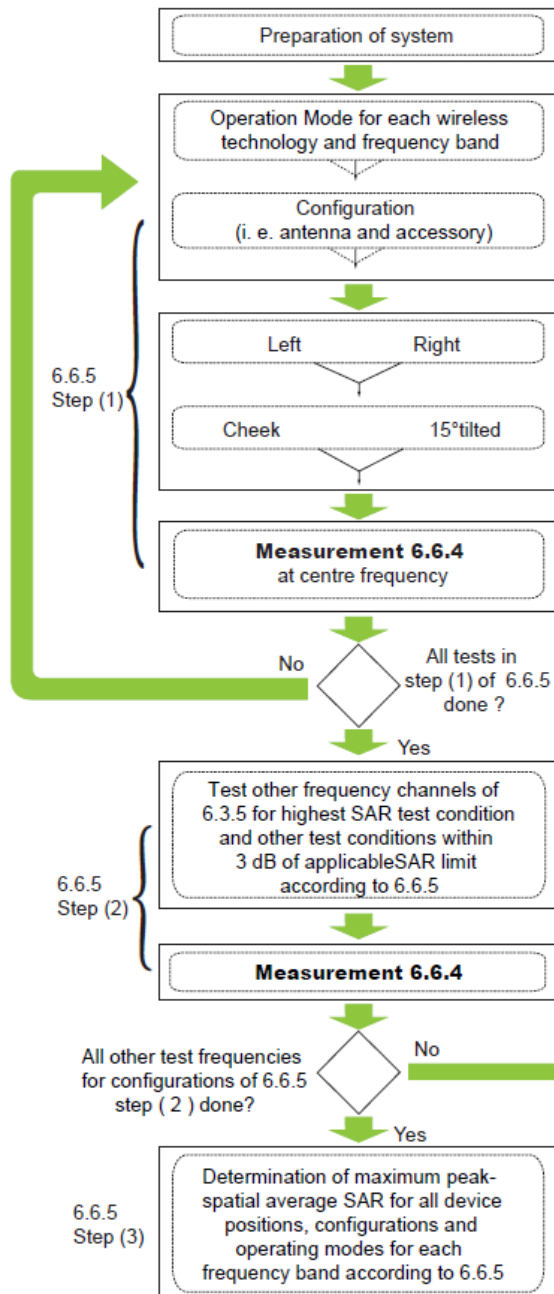


## 6. The SAR Measurement Procedure

### 6.1. Measurement Process Diagram

#### General Procedure

For IEEE1528-2013 Head SAR



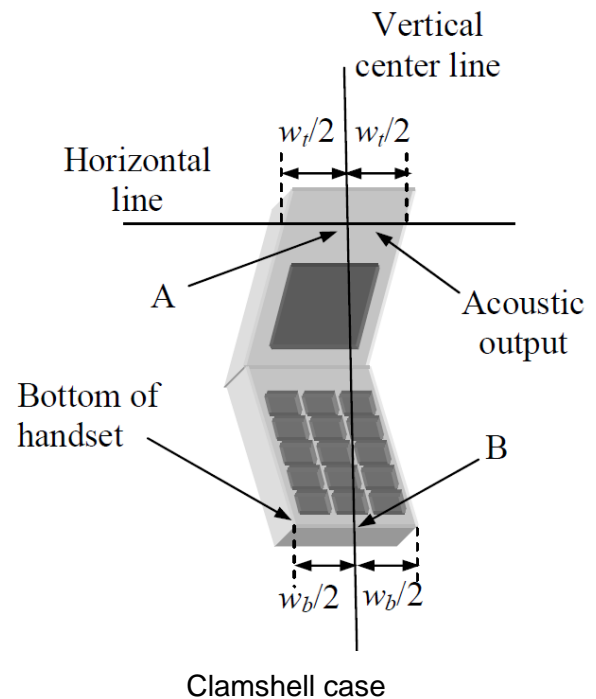
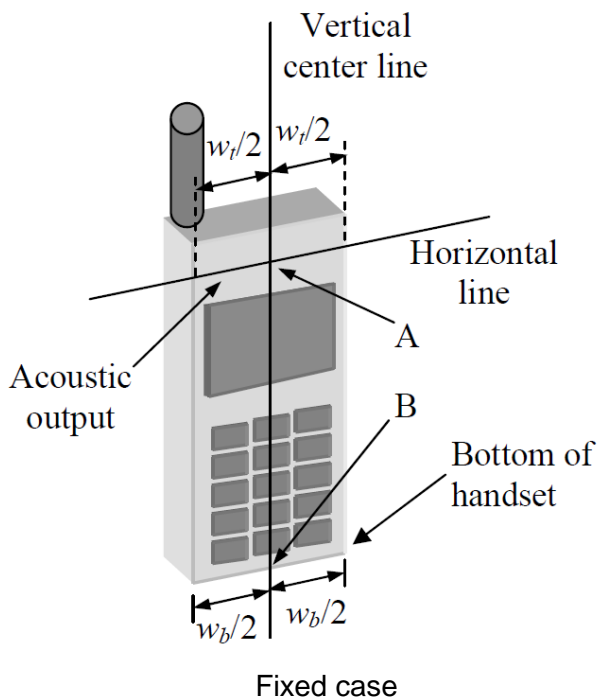
#### For Body SAR

SAR scan procedures described in section 2.7 of KDB 865664 D01 v01r04 should be applied to body SAR test.

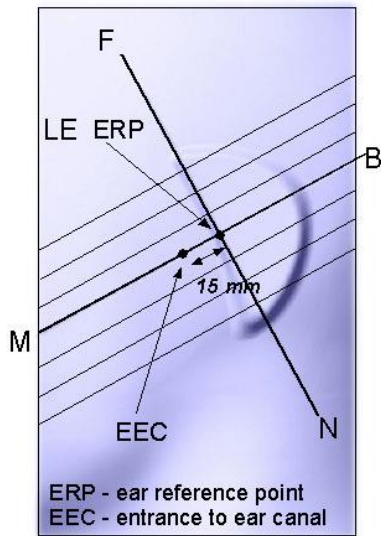
## 6.2. Test Position Definition

### ■ Head SAR Test Position

Define two imaginary lines on the handset—the vertical centerline and the horizontal line. The vertical centerline passes through two points on the front side of the handset—the midpoint of the width  $w_t$  of the handset at the level of the acoustic output [point A in Fixed case and Clamshell case], and the midpoint of the width  $w_b$  at the bottom of the handset (point B). The horizontal line is perpendicular to the vertical centerline and passes through the center of the acoustic output [see Fixed case]. The horizontal line is also tangential to the face of the handset at point A. The two lines intersect at point A. Note that for many handsets, point A coincides with the center of the acoustic output; however, the acoustic output may be located elsewhere on the horizontal line. Also note that the vertical centerline is not necessarily parallel to the front face of the handset [see Clamshell case], especially for clamshell handsets, handsets with flip covers, and other irregularly-shaped handsets, the vertical centerline passes through point A but not the tip edge of the phone.

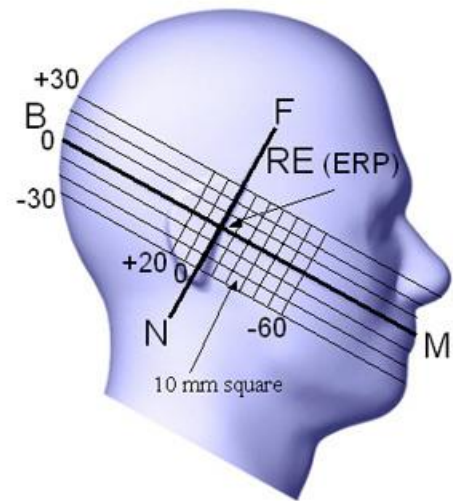






### Key

B	Direction of B-M line back endpoint
F	Direction of N-F line front endpoint
N	Direction of N-F line neck endpoint
M	Mouth reference point
LE	Left ear reference point (ERP)



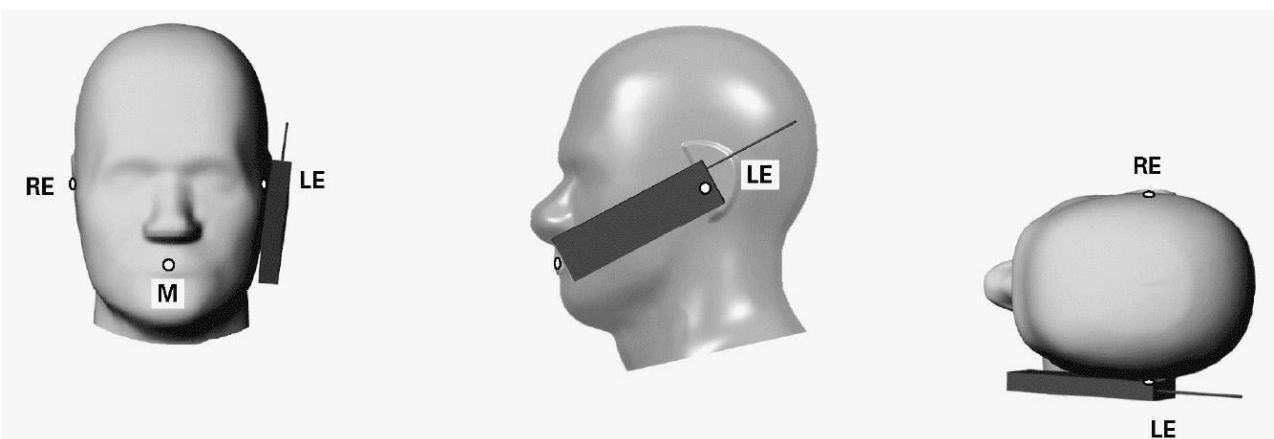
### Key

B	Line B-M back endpoint
M	Line B-M front endpoint
N	Line N-F neck endpoint
F	Line N-F front endpoint
RE	Right ear reference point (ERP)

### Cheek Position

The cheek position has the following characteristics, based on the geometrical lines described above:

- The N-F line (see above) is in the plane defined by the handset vertical centerline and horizontal line
- Handset touches the pinna
- The handset vertical centerline is aligned with the Reference Plane.



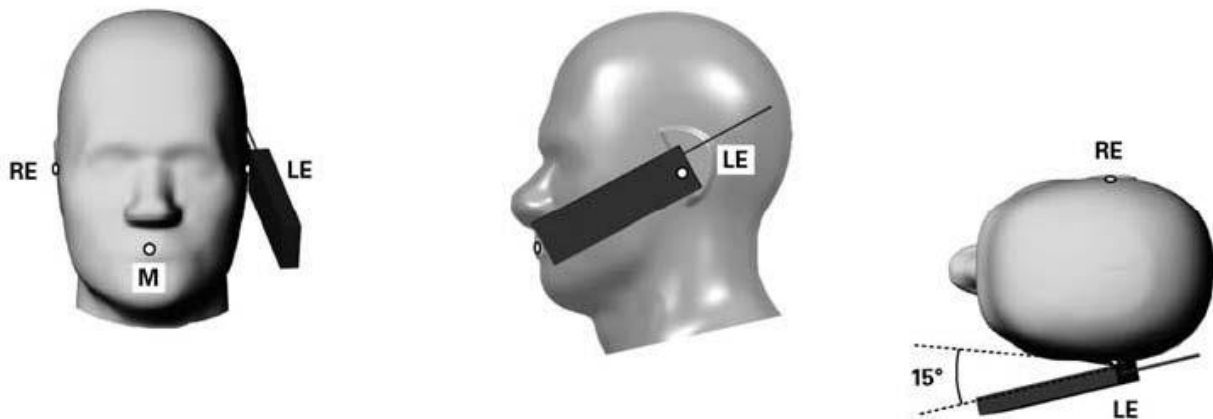
### Key

M	Mouth reference point
LE	Left ear reference point
RE	Right ear reference point

### Tilt Position

The tilt position is established as follows:

- Repeat the steps to place the device in the cheek position.
- While maintaining the orientation of the handset, move the handset away from the pinna along the line passing through RE and LE far enough to allow a rotation of the handset away from the cheek by 15°.
- Rotate the handset around the horizontal line by 15°.
- While maintaining the orientation of the handset, move the handset towards the phantom on the line passing through RE and LE until any part of the handset touches the ear. The tilt position is obtained when the contact point is on the pinna. If contact occurs at any location other than the pinna, e.g., the antenna at the back of the phantom head, the angle of the handset shall be reduced. In this case, the tilt position is obtained if any point on the handset is in contact with the pinna and a second point on the handset is in contact with the phantom, e.g., the antenna with the back of the head.



### Key

M	Mouth reference point
LE	Left ear reference point
RE	Right ear reference point

### ■ Body SAR Test Position

For body-worn accessory, hotspot mode and other exposure conditions to human body should be conducted pursuant to the test position requirements of SAR KDBs for certain product.

## 6.3. Test Procedure

### Step 1 Setup a Connection

First, engineer should record the conducted power before the test. Then establish a call in handset at the maximum power level with a base station simulator via air interface, or make the EUT establish transmission by itself in testing band. Place the EUT to certain test position.

### Step 2 Power Reference Measurements

To measure the local E-field value at a fixed location which value will be taken as a reference value for calculating a possible power drift.

### Step 3 Area Scan

The Area Scan is used as a fast scan in two dimensions to find the area of high field values, before doing a fine measurement around the hot spot. The sophisticated interpolation routines implemented in DASY software can find the maximum locations even in relatively coarse grids. When an Area Scan has measured all reachable points, it computes the field maximal found in the scanned area, within a range of the global maximum. The range (in dB) is specified in the standards for compliance testing. For example, a 2 dB range is required in IEEE Standard 1528 and IEC 62209 standards, whereby 3 dB is a requirement when compliance is assessed in accordance with the ARIB standard (Japan). If only one Zoom Scan follows the Area Scan, then only the absolute maximum will be taken as reference. For cases where multiple maximums are detected, the number of Zoom Scans has to be increased accordingly.

**Area Scan Parameters extracted from KDB 865664 D01v01r04**

	≤ 3 GHz	> 3 GHz
Maximum distance from closest measurement point (geometric center of probe sensors) to phantom surface	5 mm ± 1 mm	$\frac{1}{2} \cdot \delta \cdot \ln(2)$ mm ± 0.5 mm
Maximum probe angle from probe axis to phantom surface normal at the measurement location	30° ± 1°	20° ± 1°
Maximum area scan spatial resolution: $\Delta x_{Area}$ , $\Delta y_{Area}$	≤ 2 GHz: ≤ 15 mm 2 - 3 GHz: ≤ 12 mm	3 - 4 GHz: ≤ 12 mm 4 - 6 GHz: ≤ 10 mm
	When the x or y dimension of the test device, in the measurement plane orientation, is smaller than the above, the measurement resolution must be ≤ the corresponding x or y dimension of the test device with at least one measurement point on the test device.	
Note: $\delta$ is the penetration depth of a plane-wave at normal incidence to the tissue medium; see IEEE Std 1528-2013 for details.		

#### Step 4 Zoom Scan

Zoom Scans are used to assess the peak spatial SAR values within a cubic averaging volume containing 1 g and 10 g of simulated tissue. The Zoom Scan measures points (refer to table below) within a cube whose base faces are centered on the maxima found in a preceding area scan job within the same procedure. When the measurement is done, the Zoom Scan evaluates the averaged SAR for 1 g and 10 g and displays these values next to the job's label.

**Zoom Scan Parameters extracted from KDB 865664 D01 v01r04**

			≤ 3 GHz	> 3 GHz
Maximum zoom scan spatial resolution: Δx <sub>Zoom</sub> , Δy <sub>Zoom</sub>			≤ 2 GHz: ≤ 8 mm 2 - 3 GHz: ≤ 5 mm*	3 - 4 GHz: ≤ 5 mm* 4 - 6 GHz: ≤ 4 mm*
Maximum zoom scan spatial resolution, normal to phantom surface	uniform grid: Δz <sub>Zoom</sub> (n)		≤ 5 mm	3 - 4 GHz: ≤ 4 mm 4 - 5 GHz: ≤ 3 mm 5 - 6 GHz: ≤ 2 mm
	graded grid	Δz <sub>Zoom</sub> (1): between 1 <sup>st</sup> two points closest to phantom surface	≤ 4 mm	3 - 4 GHz: ≤ 3 mm 4 - 5 GHz: ≤ 2.5 mm 5 - 6 GHz: ≤ 2 mm
		Δz <sub>Zoom</sub> (n>1): between subsequent points	≤ 1.5·Δz <sub>Zoom</sub> (n-1) mm	
Minimum zoom scan volume	x, y, z		≥ 30 mm	3-4 GHz: ≥ 28 mm 4-5 GHz: ≥ 25 mm 5-6 GHz: ≥ 22 mm
Note: * When zoom scan is required and the reported SAR from the area scan based 1-g SAR estimation procedures of KDB Publication 447498 is ≤ 1.4 W/kg, ≤ 8 mm, ≤ 7 mm and ≤ 5 mm zoom scan resolution may be applied, respectively, for 2 GHz to 3 GHz, 3 GHz to 4 GHz and 4 GHz to 6 GHz.				

#### Step 5 Power Drift Measurements

Repetition of the E-field measurement at the fixed location mentioned in Step 1 to make sure the two results differ by less than  $\pm 0.2 \text{ dB}$ .

#### Step 6 Test Data

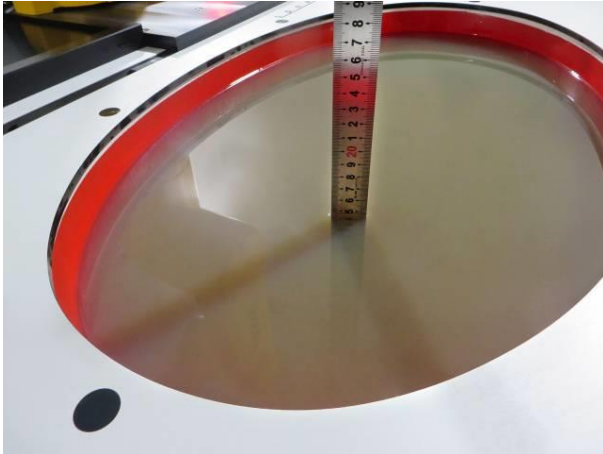
After the test, SAR test data should be exported by SEMCAD.

## 7. System Verificaiton

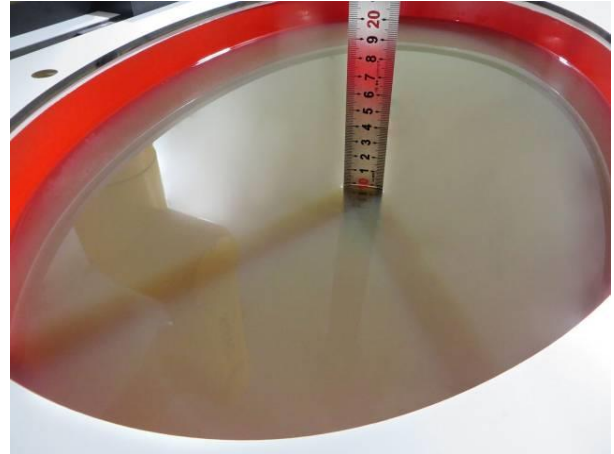
### 7.1. Tissue Check

- Refer to KDB 865664 D01 v01r04, the depth of body tissue-equivalent liquid in a phantom must be  $\geq 15.0$  cm with  $\leq \pm 0.5$  cm variation for SAR measurements  $\leq 3$  GHz and  $\geq 10.0$  cm with  $\leq \pm 0.5$  cm variation for measurements  $> 3$  GHz.

15cm Depth Body Tissue for  $\leq 3$ GHz band



10cm Depth Body Tissue for  $\geq 3$ GHz band



#### ■ Tissue Dielectric Parameters for Head and Body tissue-equivalent liquid

Target Frequency	Head		Body	
(MHz)	$\epsilon_r$	$\sigma$ (S/m)	$\epsilon_r$	$\sigma$ (S/m)
150	52.3	0.76	61.9	0.80
300	45.3	0.87	58.2	0.92
450	43.5	0.87	56.7	0.94
835	41.5	0.90	55.2	0.97
900	41.5	0.97	55.0	1.05
915	41.5	0.98	55.0	1.06
1450	40.5	1.20	54.0	1.30
1610	40.3	1.29	53.8	1.40
1800~2000	40.0	1.40	53.3	1.52
2450	39.2	1.80	52.7	1.95
3000	38.5	2.40	52.0	2.73
5200	36.0	4.66	49.0	5.30
5600	35.5	5.07	48.5	5.77
5800	35.3	5.27	48.2	6.00

( $\epsilon_r$  = relative permittivity,  $\sigma$  = conductivity and  $\rho = 1000 \text{ kg/m}^3$ )

Note: Other head and body tissue parameters that have not been specified in IEEE Std 1528 are derived from tissue dielectric parameters computed from the 4-Cole-Cole equations described above and extrapolated according to the head parameters specified in IEEE Std 1528.

#### ■ Tissue Calibration Result

The dielectric parameters of the liquids were verified prior to the SAR evaluation using DASY6 Dielectric Assessment Kit and keysight PNA-L Network Analyzer N5234B.

Tissue parameter for head								
Freq. (MHz)	Perm.	Cond.	Target Perm.	Target Cond.	Deviation Perm. %	Deviation Cond. %	Tissue Temperature	Test Date
2450	39.72	1.85	39.20	1.80	1.33	2.78	22.5°C	2019.08.19
5250	34.94	4.54	35.93	4.71	-2.76	-3.61	22.5°C	2019.08.20
5600	34.34	4.92	35.53	5.07	-3.35	-2.96	22.5°C	2019.08.20
5750	34.07	5.09	35.36	5.22	-3.65	-2.49	22.5°C	2019.08.20

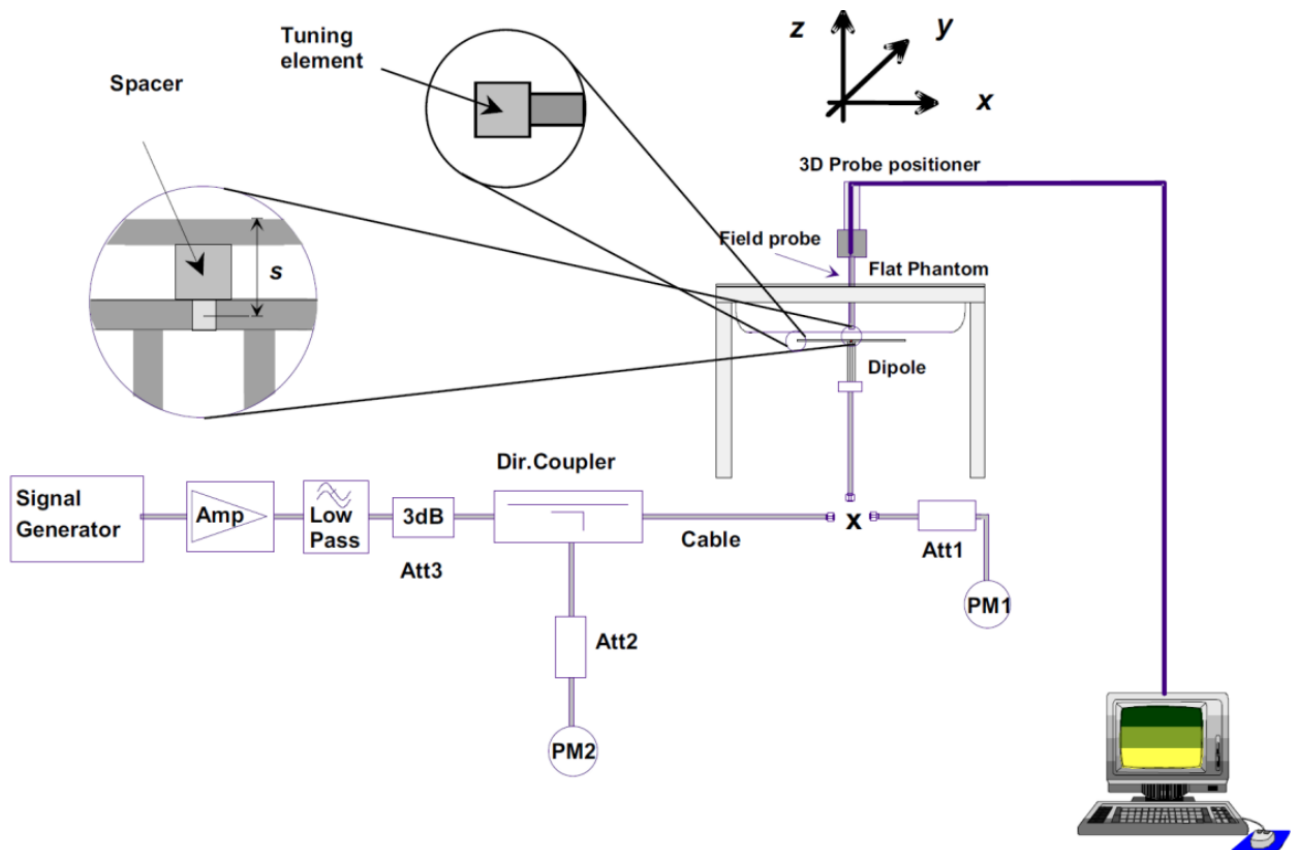
Note: The  $\pm 5\%$  deviation of tissue parameter is recommended.

## 7.2. System Check

### ■ Purpose

The purpose of the system check is to verify that the system operates within its specifications at the device test frequencies. System check verifies the measurement repeatability of a SAR system before compliance testing and is not a validation of all system specifications. The latter is not required for testing a device but is mandatory before the system is deployed.

### ■ System Performance Check Setup Diagram



### ■ System Check Procedure

The system check procedure is a complete 1g and 10g peak spatial-average SAR measurement using a source having a previously determined system check target value. The measured 1g and 10g SAR are normalized to the target input power of the specific source and compared to their respective target values.

A description of the different measurement tasks to be performed is given below, together with the information that can be deduced from their results:

- The Power Reference Measurement and Power Drift Measurement are located at the beginning and end of the batch process. They measure the field drift at one single point in the liquid over the complete procedure. The indicated drift is mainly the variation of the amplifier output power. If it is too high (above

$\pm 0.1$  dB), the system check should be repeated; some amplifiers have very high drift during warm-up. A stable amplifier gives drift results in the DASY6 system below  $\pm 0.02$  dB.

b. The second step is optional. For probes with integrated optical surface detection sensor this step must be conducted, otherwise the step can be skipped. The Surface Check tests the optical surface detection system of the DASY6 system by repeatedly detecting the surface with the optical and mechanical surface detector and comparing the results. The output gives the detecting heights of both systems, the difference between the two systems and the standard deviation of the detection repeatability. Air bubbles or refraction in the liquid due to separation of the sugar-water mixture gives poor repeatability (above  $\pm 0.1$  mm). In that case it is better to abort the system check and stir the liquid.

c. The Area Scan measures the SAR above the dipole on a plane parallel to the surface. It is used to locate the approximate location of the peak SAR. The proposed scan uses large grid spacing for faster measurement; due to the symmetric field, the peak detection is reliable. If a finer graphic is desired, the grid spacing can be reduced. Grid spacing and orientation have no influence on the SAR result.

d. The Zoom Scan measures the field in a volume around the peak SAR value assessed in the previous Area Scan.

If the system check gives reasonable results, the SAR peak, 1 g and 10 g spatial average SAR values normalized to 1 W dipole input power give reference data for comparisons. The next sections analyze the expected uncertainties of these values, as well as additional checks for further information or troubleshooting.

#### ■ Result of System Performance Check

System check for head								
Freq. (MHz)	1g SAR (W/kg)	10g SAR (W/kg)	Target 1g SAR (W/kg)	Target 10g SAR (W/kg)	Deviation 1g SAR (%)	Deviation 10g SAR (%)	Tissue Temp.	Test Date
2450	52.80	24.52	52.10	24.40	1.34	0.49	22.5°C	2019.08.19
5250	84.10	24.10	81.70	23.30	2.94	3.43	22.5°C	2019.08.20
5600	87.10	24.70	85.40	24.30	1.99	1.65	22.5°C	2019.08.20
5750	80.50	22.90	79.10	22.50	1.77	1.78	22.5°C	2019.08.20

Note:

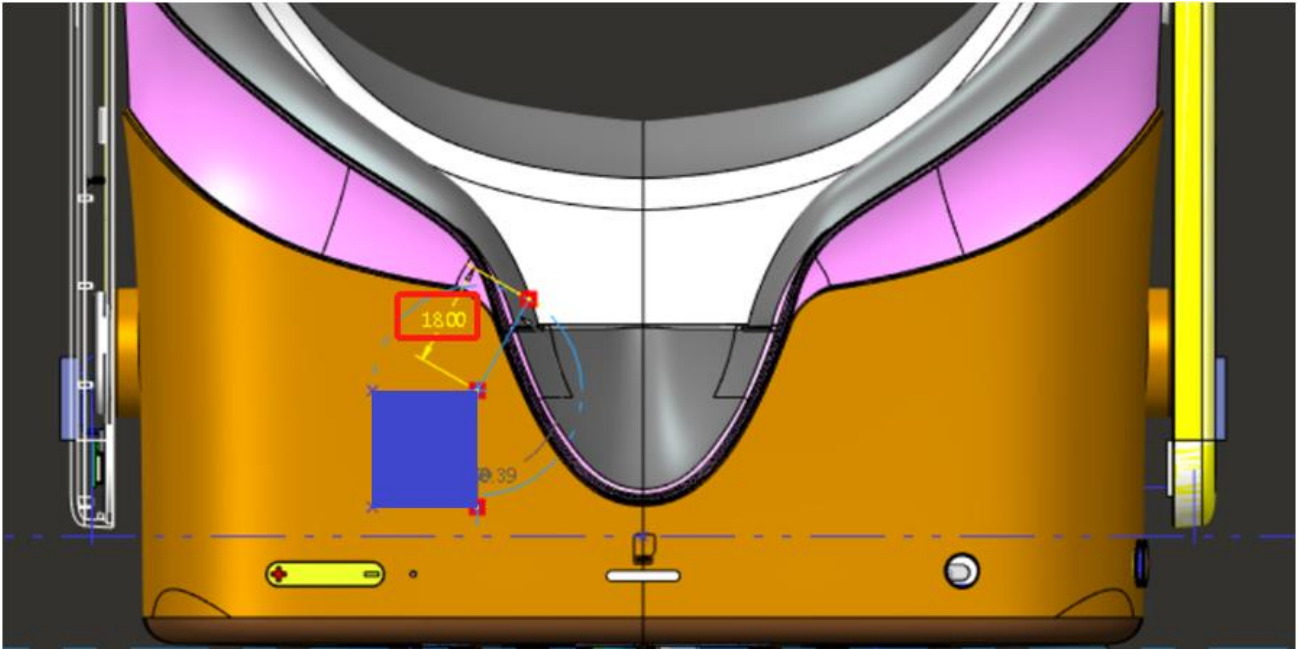
1. The  $\pm 10\%$  deviation of system check result is required.
2. System check value listed above has been harmonized to 1W.



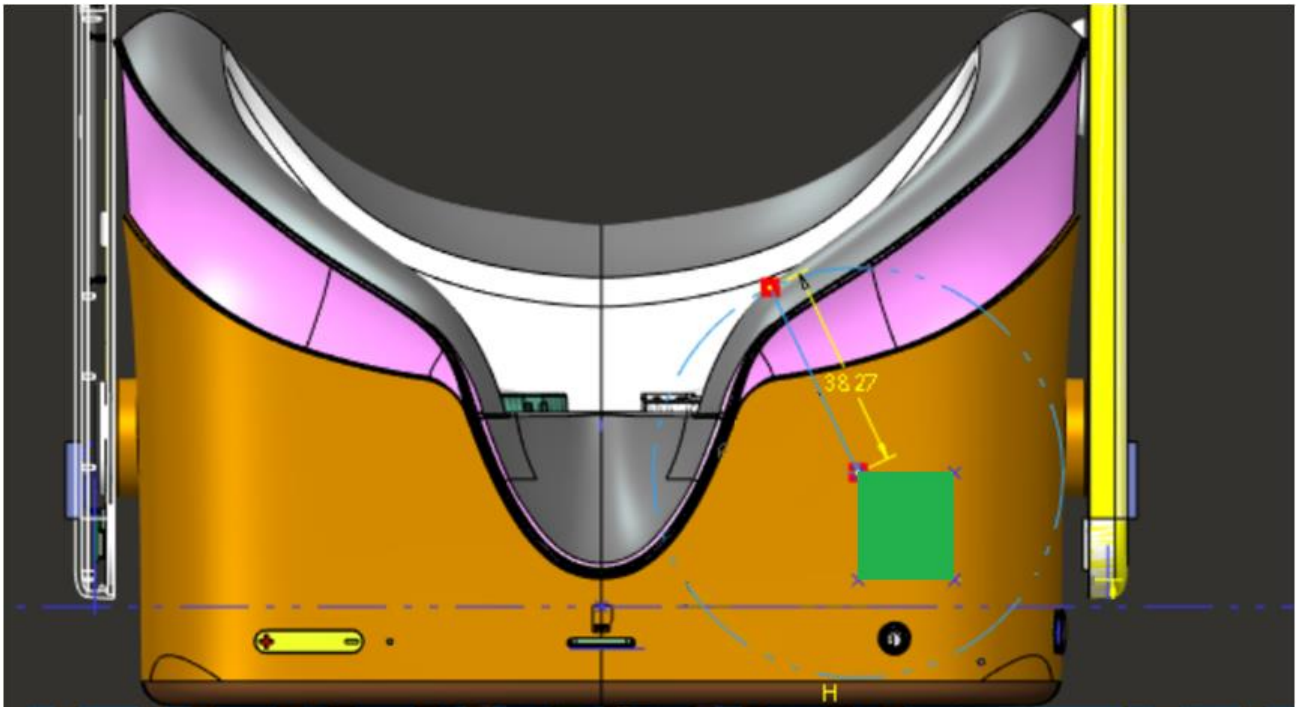
## 8. Analysis and Results

### 8.1. Antenna Location

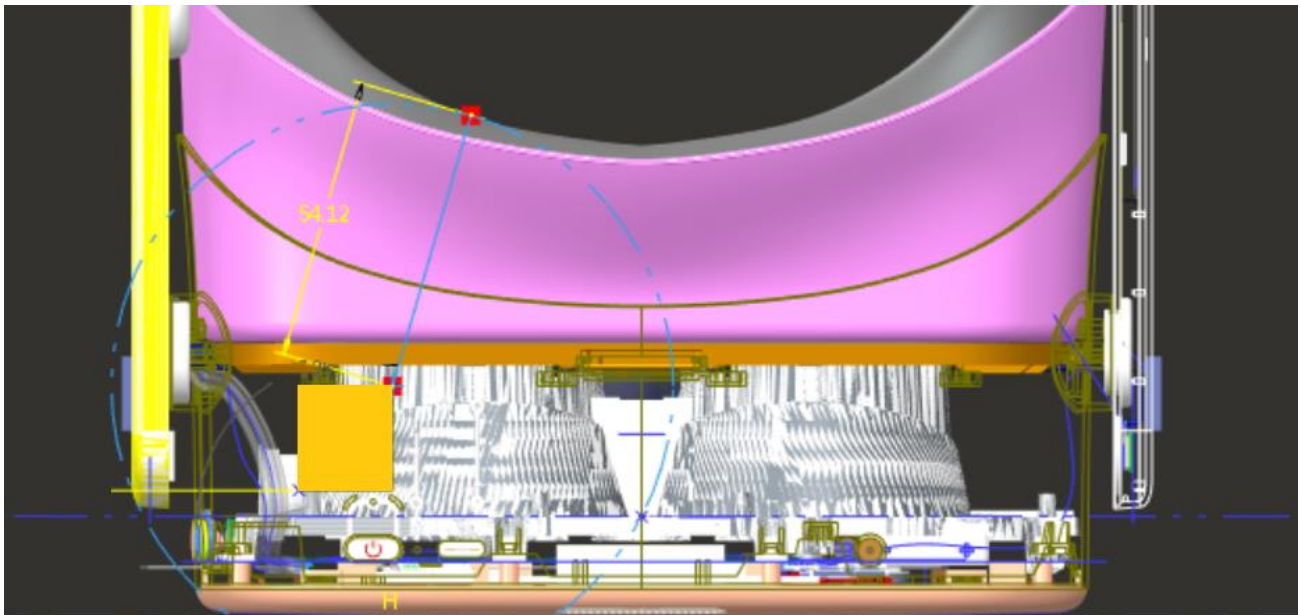
Ant 1 (Bottom View)



Ant 2 (Bottom View)



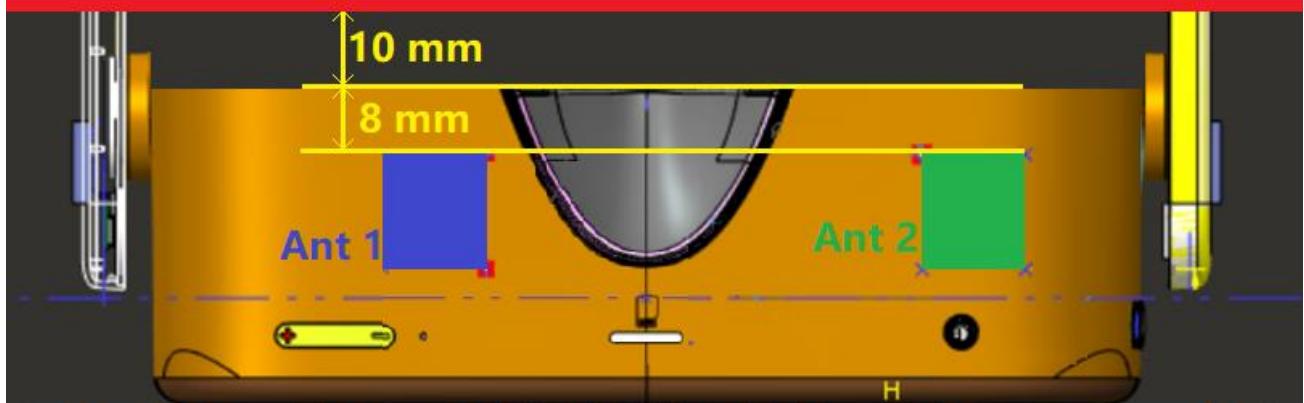
Ant 3 (Top View)



Antenna Distance to forehead (mm)		
Ant 1	Ant 2	Ant 3
18.00	38.27	54.12

During SAR test, the part of plastic frame was cut off to get intended use distance as shown blow. Antenna to frame edge distance is 8mm; frame edge to phantom distance is 10 mm, therefore the distance of antenna to phantom is 18mm. See more details in Annex C.

## Phantom



## 8.2. Conducted Power

### ■ 2.4GHz Band Wi-Fi

Band (GHz)	Antenna Configuration	Mode	Channel	Freq. (MHz)	Average Power (dBm)	Tune-up Limit Power (dBm)
2.4 (2.4~2.4835)	Ant 1	802.11b	1	2412	12.27	13.0
			6	2437	<b>12.80</b>	13.0
			11	2462	12.79	13.0
		802.11g	1	2412	15.72	16.0
			6	2437	15.74	16.0
			11	2462	15.85	16.0
		802.11n(HT20)	1	2412	15.70	16.0
			6	2437	<b>15.86</b>	16.0
			11	2462	15.72	16.0
	Ant 2	802.11b	1	2412	11.82	12.5
			6	2437	11.76	12.5
			11	2462	<b>12.23</b>	12.5
		802.11g	1	2412	15.57	16.0
			6	2437	15.54	16.0
			11	2462	<b>15.96</b>	16.5
		802.11n(HT20)	1	2412	15.51	16.0
			6	2437	15.62	16.0
			11	2462	15.42	16.0

■ 5GHz Band Wi-Fi

Band (GHz)	Antenna Configuration	Mode	Channel	Freq. (MHz)	Average Power (dBm)	Tune-up Limit Power (dBm)
5.2 (5.15~5.25)	Ant 1	802.11a	36	5180	10.91	11.5
			44	5220	10.94	11.5
			48	5240	11.15	11.5
		802.11n(HT20)	36	5180	10.72	11.5
			44	5220	10.95	11.5
			48	5240	10.93	11.5
		802.11n(HT40)	38	5190	11.17	11.5
			46	5230	11.23	11.5
		802.11ac(VHT20)	36	5180	10.89	11.5
			44	5220	10.81	11.5
			48	5240	11.02	11.5
		802.11ac(VHT40)	38	5190	10.81	11.5
			46	5230	10.74	11.5
		802.11ac(VHT80)	42	5210	10.54	11.0
	Ant 2	802.11a	36	5180	9.98	10.5
			44	5220	9.50	10.0
			48	5240	10.02	10.5
		802.11n(HT20)	36	5180	9.83	10.5
			44	5220	9.73	10.5
			48	5240	9.82	10.5
		802.11n(HT40)	38	5190	8.15	8.5
			46	5230	8.16	8.5
		802.11ac(VHT20)	36	5180	9.81	10.5
			44	5220	9.83	10.5
			48	5240	9.89	10.5
		802.11ac(VHT40)	38	5190	8.15	8.5
			46	5230	8.05	8.5
		802.11ac(VHT80)	42	5210	9.41	10.0

&lt;Continue&gt;

5.3 (5.25~5.35)	Ant 1	802.11a	52	5260	11.03	11.5
			60	5300	10.83	11.5
			64	5320	10.87	11.5
		802.11n(HT20)	52	5260	10.87	11.5
			60	5300	10.98	11.5
			64	5320	11.24	11.5
		802.11n(HT40)	54	5270	<b>10.96</b>	11.5
			62	5310	9.03	9.5
		802.11ac(VHT20)	52	5260	10.91	11.5
			60	5300	10.93	11.5
			64	5320	11.16	11.5
		802.11ac(VHT40)	54	5270	10.98	11.5
			62	5310	11.03	11.5
		802.11ac(VHT80)	58	5290	10.67	11.0
	Ant 2	802.11a	52	5260	10.32	11.0
			60	5300	<b>10.65</b>	11.0
			64	5320	10.18	10.5
		802.11n(HT20)	52	5260	9.98	10.5
			60	5300	10.43	11.0
			64	5320	10.33	11.0
		802.11n(HT40)	54	5270	8.09	8.5
			62	5310	8.75	9.5
		802.11ac(VHT20)	52	5260	10.18	10.5
			60	5300	10.33	10.5
			64	5320	10.32	10.5
		802.11ac(VHT40)	54	5270	8.26	9.0
			62	5310	8.65	9.0
		802.11ac(VHT80)	58	5290	9.44	10.0

&lt;Continue&gt;

5.6 (5.47~5.725)	Ant 1	802.11a	100	5500	11.99	12.5
			120	5600	<b>12.09</b>	12.5
			140	5700	9.85	10.5
			144	5720	9.47	10.0
		802.11n(HT20)	100	5500	12.08	12.5
			120	5600	12.21	12.5
			140	5700	9.68	10.0
			144	5720	9.66	10.0
		802.11n(HT40)	102	5510	10.31	10.5
			118	5590	10.10	10.5
			134	5670	10.46	11.0
			142	5710	9.44	10.0
		802.11ac(VHT20)	100	5500	12.16	12.5
			120	5600	11.93	12.5
			140	5700	9.89	10.5
			144	5720	9.53	10.0
		802.11ac(VHT40)	102	5510	10.34	10.5
			118	5590	10.31	10.5
			134	5670	10.18	10.5
			142	5710	9.53	10.0
		802.11ac(VHT80)	106	5530	10.94	11.5
			122	5610	11.32	11.5
			138	5690	9.26	9.5
	Ant 2	802.11a	100	5500	11.87	12.0
			120	5600	10.45	11.0
			140	5700	8.84	9.5
			144	5720	8.64	9.0
		802.11n(HT20)	100	5500	11.76	12.0
			120	5600	10.66	11.0
			140	5700	8.55	9.0
			144	5720	8.31	9.0
		802.11n(HT40)	102	5510	9.98	10.5
			118	5590	9.39	10.0
			134	5670	7.78	8.0
			142	5710	7.47	8.0

&lt;Continue&gt;

5.6 (5.47~5.725)	Ant 2	802.11ac(VHT20)	100	5500	<b>11.92</b>	12.5
			120	5600	10.87	11.5
			140	5700	8.56	9.0
			144	5720	8.31	9.0
		802.11ac(VHT40)	102	5510	9.93	10.5
			118	5590	9.30	10.0
			134	5670	7.76	8.0
			142	5710	7.32	7.5
		802.11ac(VHT80)	106	5530	9.51	10.0
			122	5610	8.92	9.5
			138	5690	8.17	8.5
5.8 (5.725~5.850)	Ant 1	802.11a	149	5745	8.77	9.0
			157	5785	8.73	9.0
			165	5825	8.37	8.5
		802.11n(HT20)	149	5745	<b>9.11</b>	9.5
			157	5785	8.93	9.5
			165	5825	8.34	8.5
		802.11n(HT40)	151	5755	8.79	9.0
			159	5795	8.78	9.0
		802.11ac(VHT20)	149	5745	9.13	9.5
			157	5785	8.69	9.0
			165	5825	8.31	8.5
		802.11ac(VHT40)	151	5755	8.81	9.0
			159	5795	8.87	9.0
		802.11ac(VHT80)	155	5775	8.33	8.5
	Ant 2	802.11a	149	5745	<b>8.11</b>	8.5
			157	5785	7.73	8.0
			165	5825	7.01	7.5
		802.11n(HT20)	149	5745	7.91	8.5
			157	5785	7.78	8.0
			165	5825	7.18	7.5
		802.11n(HT40)	151	5755	7.19	7.5
			159	5795	7.24	7.5
		802.11ac(VHT20)	149	5745	7.90	8.5
			157	5785	7.65	8.0
			165	5825	7.17	7.5

&lt;Continue&gt;

5.8 (5.725~5.850)	Ant 2	802.11ac(VHT40)	151	5755	7.06	7.5
			159	5795	7.51	8.0
		802.11ac(VHT80)	155	5775	7.45	8.0

# Bluetooth

Band (GHz)	Antenna Configuration	Mode	Channel	Freq. (MHz)	Average Power (dBm)	Tune-up Limit Power (dBm)
2.4 (2.4~2.4835)	Ant 1	DH5	0	2402	2.20	2.5
			39	2441	0.76	1.5
			78	2480	0.97	1.5
		2DH5	0	2402	-0.58	0
			39	2441	-2.52	-2.0
			78	2480	-1.42	-1.0
		3DH5	0	2402	-1.09	-0.5
			39	2441	-2.98	-2.5
			78	2480	-1.91	-1.5
		BLE	0	2402	7.61	8.0
			19	2440	6.56	7.0
			39	2480	7.93	8.5
	Ant 3	BLE	0	2402	-0.97	-0.5
			19	2440	-1.07	-0.5
			39	2480	-1.31	-0.5

Note: The power above is conducted power tested via RF cable.



### 8.3. SAR Exclusion Analysis

Per FCC KDB 447498 D01v06, the SAR exclusion threshold for distances < 50 mm is defined by the following equation:

$$\frac{\text{Max Power of Channel (mW)}}{\text{Test Separation Distance (mm)}} \times \sqrt{\text{Frequency (GHz)}} \leq 3.0 ;$$

For 100 MHz to 6 GHz and test separation distances > 50 mm, the 1-g and 10-g SAR test exclusion thresholds are determined by the following:

- 1) {[Power allowed at numeric threshold for 50 mm in step a)] + [(test separation distance – 50 mm) \* (f(MHz)/150)]} mW, for 100 MHz to 1500 MHz
- 2) {[Power allowed at numeric threshold for 50 mm in step a)] + [(test separation distance – 50 mm)\*10]} mW, for > 1500 MHz and ≤ 6 GHz

Antenna Distance to forehead (mm)		
Ant 1	Ant 2	Ant 3
18.00	38.27	54.12

#### 18mm Antenna 1

Mode	Ch.	Freq. (MHz)	Ant-to-user distance (mm)	Thresholds (mW)	Tune-up Power		SAR Test (Y/N)
					dBm	mW	
802.11b	1	2412	18	34.77	13.0	19.95	N
	6	2437	18	34.59	13.0	19.95	N
	11	2462	18	34.42	13.0	19.95	N
802.11g	1	2412	18	34.77	16.0	39.81	Y
	6	2437	18	34.59	16.0	39.81	Y
	11	2462	18	34.42	16.0	39.81	Y
802.11n(HT20)	1	2412	18	34.77	16.0	39.81	Y
	6	2437	18	34.59	16.0	39.81	Y
	11	2462	18	34.42	16.0	39.81	Y
802.11a	36	5180	18	23.73	11.5	14.13	N
	44	5220	18	23.64	11.5	14.13	N
	48	5240	18	23.59	11.5	14.13	N
802.11n(HT20)	36	5180	18	23.73	11.5	14.13	N
	44	5220	18	23.64	11.5	14.13	N
	48	5240	18	23.59	11.5	14.13	N
802.11n(HT40)	38	5190	18	23.70	11.5	14.13	N
	46	5230	18	23.61	11.5	14.13	N

&lt;Continue&gt;

802.11ac(VHT20)	36	5180	18	23.73	11.5	14.13	N
	44	5220	18	23.64	11.5	14.13	N
	48	5240	18	23.59	11.5	14.13	N
802.11ac(VHT40)	38	5190	18	23.70	11.5	14.13	N
	46	5230	18	23.61	11.5	14.13	N
802.11ac(VHT80)	42	5210	18	23.66	11.0	12.59	N
802.11a	52	5260	18	23.55	11.5	14.13	N
	60	5300	18	23.46	11.5	14.13	N
	64	5320	18	23.41	11.5	14.13	N
802.11n(HT20)	52	5260	18	23.55	11.5	14.13	N
	60	5300	18	23.46	11.5	14.13	N
	64	5320	18	23.41	11.5	14.13	N
802.11n(HT40)	54	5270	18	23.52	11.5	14.13	N
	62	5310	18	23.43	9.5	8.91	N
802.11ac(VHT20)	52	5260	18	23.55	11.5	14.13	N
	60	5300	18	23.46	11.5	14.13	N
	64	5320	18	23.41	11.5	14.13	N
802.11ac(VHT40)	54	5270	18	23.52	11.5	14.13	N
	62	5310	18	23.43	11.5	14.13	N
802.11ac(VHT80)	58	5290	18	23.48	11.0	12.59	N
802.11a	100	5500	18	23.03	12.5	17.78	N
	120	5600	18	22.82	12.5	17.78	N
	140	5700	18	22.62	10.5	11.22	N
	144	5720	18	22.58	10.0	10.00	N
802.11n(HT20)	100	5500	18	23.03	12.5	17.78	N
	120	5600	18	22.82	12.5	17.78	N
	140	5700	18	22.62	10.0	10.00	N
	144	5720	18	22.58	10.0	10.00	N
802.11n(HT40)	102	5510	18	23.00	10.5	11.22	N
	118	5590	18	22.84	10.5	11.22	N
	134	5670	18	22.68	11.0	12.59	N
	142	5710	18	22.60	10.0	10.00	N
802.11ac(VHT20)	100	5500	18	23.03	12.5	17.78	N
	120	5600	18	22.82	12.5	17.78	N
	140	5700	18	22.62	10.5	11.22	N
	144	5720	18	22.58	10.0	10.00	N

&lt;Continue&gt;

802.11ac(VHT40)	102	5510	18	23.00	10.5	11.22	N
	118	5590	18	22.84	10.5	11.22	N
	134	5670	18	22.68	10.5	11.22	N
	142	5710	18	22.60	10.0	10.00	N
802.11ac(VHT80)	106	5530	18	22.96	11.5	14.13	N
	122	5610	18	22.80	11.5	14.13	N
	138	5690	18	22.64	9.5	8.91	N
802.11a	149	5745	18	22.53	9.0	7.94	N
	157	5785	18	22.45	9.0	7.94	N
	165	5825	18	22.37	8.5	7.08	N
802.11n(HT20)	149	5745	18	22.53	9.5	8.91	N
	157	5785	18	22.45	9.5	8.91	N
	165	5825	18	22.37	8.5	7.08	N
802.11n(HT40)	151	5755	18	22.51	9.0	7.94	N
	159	5795	18	22.43	9.0	7.94	N
802.11ac(VHT20)	149	5745	18	22.53	9.5	8.91	N
	157	5785	18	22.45	9.0	7.94	N
	165	5825	18	22.37	8.5	7.08	N
802.11ac(VHT40)	151	5755	18	22.51	9.0	7.94	N
	159	5795	18	22.43	9.0	7.94	N
802.11ac(VHT80)	155	5775	18	22.47	8.5	7.08	N
DH5	0	2402	18	34.84	2.5	1.78	N
	39	2441	18	34.56	1.5	1.41	N
	78	2480	18	34.29	1.5	1.41	N
2DH5	0	2402	18	34.84	0	1.00	N
	39	2441	18	34.56	-2.0	0.63	N
	78	2480	18	34.29	-1.0	0.79	N
3DH5	0	2402	18	34.84	-0.5	0.89	N
	39	2441	18	34.56	-2.5	0.56	N
	78	2480	18	34.29	-1.5	0.71	N
BLE	0	2402	18	34.84	8.0	6.31	N
	19	2440	18	34.57	7.0	5.01	N
	39	2480	18	34.29	8.5	7.08	N

### 38.27mm Antenna 2

Mode	Ch.	Freq. (MHz)	Ant-to-user distance (mm)	Thresholds (mW)	Tune-up Power		SAR Test (Y/N)
					dBm	mW	
802.11b	1	2412	38.27	73.92	12.5	17.78	N
	6	2437	38.27	73.54	12.5	17.78	N
	11	2462	38.27	73.17	12.5	17.78	N
802.11g	1	2412	38.27	73.92	16.0	39.81	N
	6	2437	38.27	73.54	16.0	39.81	N
	11	2462	38.27	73.17	16.5	44.67	N
802.11n(HT20)	1	2412	38.27	73.92	16.0	39.81	N
	6	2437	38.27	73.54	16.0	39.81	N
	11	2462	38.27	73.17	16.0	39.81	N
802.11a	36	5180	38.27	50.44	10.5	11.22	N
	44	5220	38.27	50.25	10.0	10.00	N
	48	5240	38.27	50.15	10.5	11.22	N
802.11n(HT20)	36	5180	38.27	50.44	10.5	11.22	N
	44	5220	38.27	50.25	10.5	11.22	N
	48	5240	38.27	50.15	10.5	11.22	N
802.11n(HT40)	38	5190	38.27	50.40	8.5	7.08	N
	46	5230	38.27	50.20	8.5	7.08	N
802.11ac(VHT20)	36	5180	38.27	50.44	10.5	11.22	N
	44	5220	38.27	50.25	10.5	11.22	N
	48	5240	38.27	50.15	10.5	11.22	N
802.11ac(VHT40)	38	5190	38.27	50.40	8.5	7.08	N
	46	5230	38.27	50.20	8.5	7.08	N
802.11ac(VHT80)	42	5210	38.27	50.30	10.0	10.00	N
802.11a	52	5260	38.27	50.06	11.0	12.59	N
	60	5300	38.27	49.87	11.0	12.59	N
	64	5320	38.27	49.78	10.5	11.22	N
802.11n(HT20)	52	5260	38.27	50.06	10.5	11.22	N
	60	5300	38.27	49.87	11.0	12.59	N
	64	5320	38.27	49.78	11.0	12.59	N
802.11n(HT40)	54	5270	38.27	50.01	8.5	7.08	N
	62	5310	38.27	49.82	9.5	8.91	N
802.11ac(VHT20)	52	5260	38.27	50.06	10.5	11.22	N
	60	5300	38.27	49.87	10.5	11.22	N
	64	5320	38.27	49.78	10.5	11.22	N

&lt;Continue&gt;

802.11ac(VHT40)	54	5270	38.27	50.01	9.0	7.94	N
	62	5310	38.27	49.82	9.0	7.94	N
802.11ac(VHT80)	58	5290	38.27	49.92	10.0	10.00	N
802.11a	100	5500	38.27	48.96	12.0	15.85	N
	120	5600	38.27	48.52	11.0	12.59	N
	140	5700	38.27	48.09	9.5	8.91	N
	144	5720	38.27	48.00	9.0	7.94	N
802.11n(HT20)	100	5500	38.27	48.96	12.0	15.85	N
	120	5600	38.27	48.52	11.0	12.59	N
	140	5700	38.27	48.09	9.0	7.94	N
	144	5720	38.27	48.00	9.0	7.94	N
802.11n(HT40)	102	5510	38.27	48.91	10.5	11.22	N
	118	5590	38.27	48.56	10.0	10.00	N
	134	5670	38.27	48.22	8.0	6.31	N
	142	5710	38.27	48.05	8.0	6.31	N
802.11ac(VHT20)	100	5500	38.27	48.96	12.5	17.78	N
	120	5600	38.27	48.52	11.5	14.13	N
	140	5700	38.27	48.09	9.0	7.94	N
	144	5720	38.27	48.00	9.0	7.94	N
802.11ac(VHT40)	102	5510	38.27	48.91	10.5	11.22	N
	118	5590	38.27	48.56	10.0	10.00	N
	134	5670	38.27	48.22	8.0	6.31	N
	142	5710	38.27	48.05	7.5	5.62	N
802.11ac(VHT80)	106	5530	38.27	48.82	10.0	10.00	N
	122	5610	38.27	48.47	9.5	8.91	N
	138	5690	38.27	48.13	8.5	7.08	N
802.11a	149	5745	38.27	47.90	8.5	7.08	N
	157	5785	38.27	47.73	8.0	6.31	N
	165	5825	38.27	47.57	7.5	5.62	N
802.11n(HT20)	149	5745	38.27	47.90	8.5	7.08	N
	157	5785	38.27	47.73	8.0	6.31	N
	165	5825	38.27	47.57	7.5	5.62	N
802.11n(HT40)	151	5755	38.27	47.86	7.5	5.62	N
	159	5795	38.27	47.69	7.5	5.62	N

<Continue>

802.11ac(VHT20)	149	5745	38.27	47.90	8.5	7.08	N
	157	5785	38.27	47.73	8.0	6.31	N
	165	5825	38.27	47.57	7.5	5.62	N
802.11ac(VHT40)	151	5755	38.27	47.86	7.5	5.62	N
	159	5795	38.27	47.69	8.0	6.31	N
802.11ac(VHT80)	155	5775	38.27	47.78	8.0	6.31	N

### 54.12mm Antenna 3

Mode	Ch.	Freq. (MHz)	Ant-to-user distance (mm)	Thresholds (mW)	Tune-up Power		SAR Test (Y/N)
					dBm	mW	
BLE	0	2402	54.12	137.98	-0.5	0.89	N
	19	2440	54.12	137.23	-0.5	0.89	N
	39	2480	54.12	136.45	-0.5	0.89	N

#### 8.4. Required Configurations of SAR Test

Antenna Configuration		Ant 1	Ant 2	Ant 3
Test Band	DTS	Yes	Yes*	N/A
	U-NII-1	Yes*	Yes*	N/A
	U-NII-2A	Yes*	Yes*	N/A
	U-NII-2C	Yes*	Yes*	N/A
	U-NII-3	Yes*	Yes*	N/A
	Bluetooth	No	N/A	No

Note:

1. “\*”, marked configuration SAR test is required, which is to get more conservative SAR values.
2. Antenna 1 is also tested at 18mm to get more conservative SAR values.



## 8.5. SAR Test Results

### General Notes:

1. Separate SAR procedures are applied to DSSS and OFDM configurations in the 2.4 GHz band, per KDB 248227 D01 v02r02.
2. Testing of other required channels within the operating mode of a frequency band is not required if the reported 1-g SAR for the highest output power channel is: a)  $\leq 0.8$  W/kg when the transmission band is  $\leq 100$  MHz; b)  $\leq 0.6$  W/kg when the transmission band is between 100 MHz and 200 MHz; c)  $\leq 0.4$  W/kg when the transmission band is  $\geq 200$  MHz, per KDB 447498 D01 v06.
3. When the same maximum output power is specified for U-NII-1 and U-NII-2A bands, begin SAR measurement in U-NII-2A band. If the highest reported SAR for a test configuration is  $\leq 1.2$  W/kg, SAR is not required for U-NII-1 band, per KDB 248227 D01 v02r02.
4. When multiple channel bandwidth configurations in a frequency band have the same specified maximum output power, the largest channel bandwidth, lowest order modulation, lowest data rate, lowest order 802.11 modes is selected for SAR measurement, per KDB 248227 D01 v02r02.

Antenna 1													
Test Band	Test Mode	CH	Freq. (MHz)	Test Position	Dist. (mm)	Cond. Power (dBm)	Max.Tune-up Power (dBm)	Scaling Factor	Duty Cycle %	Duty Cycle Factor	Meas. SAR-1g (W/kg)	Reported SAR-1g (W/kg)	SAR Plot #
DTS Band Wi-Fi	b	6	2437	Forehead	10	12.80	13.0	1.05	98.25	1.02	0.10	0.11	
	n(HT20)	6	2437	Forehead	10	15.86	16.0	1.03	97.20	1.03	0.15	<b>0.16</b>	1
U-NII-2A Band Wi-Fi	n(HT40)	54	5270	Forehead	10	10.96	11.5	1.13	95.37	1.05	0.08	0.09	
U-NII-2C Band Wi-Fi	a	120	5600	Forehead	10	12.09	12.5	1.10	97.63	1.02	0.11	0.12	
U-NII-3 Band Wi-Fi	n(HT20)	149	5745	Forehead	10	9.11	9.5	1.09	97.45	1.03	0.07	0.08	

Antenna 2													
Test Band	Test Mode	CH	Freq. (MHz)	Test Position	Dist. (mm)	Cond. Power (dBm)	Max.Tune-up Power (dBm)	Scaling Factor	Duty Cycle %	Duty Cycle Factor	Meas. SAR-1g (W/kg)	Reported SAR-1g (W/kg)	SAR Plot #
DTS Band Wi-Fi	b	11	2462	Forehead	10	12.23	12.5	1.06	98.25	1.02	0.01	0.01	
	g	11	2462	Forehead	10	15.96	16.5	1.13	97.16	1.03	0.03	0.03	
U-NII-2A Band Wi-Fi	a	60	5300	Forehead	10	10.65	11.0	1.08	97.63	1.02	0.05	0.06	
U-NII-2C Band Wi-Fi	ac(VHT 20)	100	5500	Forehead	10	11.92	12.5	1.14	97.46	1.03	0.09	<b>0.11</b>	2
U-NII-3 Band Wi-Fi	a	149	5745	Forehead	10	8.11	8.5	1.09	97.63	1.02	0.07	0.08	

## 8.6. Estimated SAR Calculation

Per FCC KDB 447498 D01v06 section 4.3.2 b) 1), when an antenna qualifies for the standalone SAR test exclusion of 4.3.1 and also transmits simultaneously with other antennas, the standalone SAR value was estimated according to the following formula to result in substantially conservative SAR values of  $\leq 0.4\text{W/kg}$  for test separation distance  $\leq 50\text{mm}$  to determine the simultaneous transmission SAR test exclusion criteria:

$$\text{Estimated SAR} = \frac{\sqrt{f(\text{GHz})}}{7.5} * \frac{(\text{Max Power of channel, mW})}{\text{Min. Separation, mm}}, \text{ for 1-g SAR}$$

When the test separation distance is  $> 50\text{ mm}$ , estimated 1g-SAR  $0.4\text{W/kg}$  is used for simultaneous evaluation.

Antenna Configuration	Test Mode	Channel	Freq. (MHz)	Test Position	Ant-to-user Distance (mm)	Tune-up Power (dBm)	Tune-up Power (mW)	Estimated SAR (W/kg)
Ant 1	DH5	0	2402	Forehead	18.00	2.5	1.8	0.02
		39	2441	Forehead	18.00	1.5	1.4	0.02
		78	2480	Forehead	18.00	1.5	1.4	0.02
	2DH5	0	2402	Forehead	18.00	0	1.0	0.01
		39	2441	Forehead	18.00	-2.0	0.6	0.01
		78	2480	Forehead	18.00	-1.0	0.8	0.01
	3DH5	0	2402	Forehead	18.00	-0.5	0.9	0.01
		39	2441	Forehead	18.00	-2.5	0.6	0.01
		78	2480	Forehead	18.00	-1.5	0.7	0.01
	BLE	0	2402	Forehead	18.00	8.0	6.3	0.07
		19	2440	Forehead	18.00	7.0	5.0	0.06
		39	2480	Forehead	18.00	8.5	7.1	0.08
Ant 3	BLE	0	2402	Forehead	54.12	-0.5	0.9	0.40
		19	2440	Forehead	54.12	-0.5	0.9	0.40
		39	2480	Forehead	54.12	-0.5	0.9	0.40

## 9. Simultaneous Transmission Analysis

Test Position	Standalone SAR(W/kg)						Summed SAR (W/kg)				
	1	2	3	4	5	6					
	Wi-Fi 2.4G Ant 1	Wi-Fi 2.4G Ant 2	Wi-Fi 5G Ant 1	Wi-Fi 5G Ant 2	BT Ant 1	BT Ant 3	1+2	3+4	5+6	1+2+6	3+4+6
Forehead	0.16	0.03	0.12	0.11	0.08	0.40	0.19	0.23	0.48	0.59	0.63

The above numerical summed SAR results for all the worst-case simultaneous transmission conditions were below the SAR limit. Therefore, the above analysis is sufficient to determine that simultaneous transmission cases will not exceed the SAR limit and therefore no measured volumetric simultaneous SAR summation is required per FCC KDB Publication 447498 D01v06.

## 10. Test Equipment Used

SAR - SR3					
Instrument	Manufacturer	Type No.	Asset No.	Cali. Interval	Cali. Due Date
Stäubli Robot TX60L	Stäubli	TX60L	MRTSUE06412	only once	only once
Robot Controller	Stäubli	CS8C	MRTSUE06412	only once	only once
Dipole Validation Kits	Speag	D2450V2	MRTSUE06430	3 year	2021/05/08
Dipole Validation Kits	Speag	D5GHzV2	MRTSUE06434	3 year	2022/04/15
ELI Phantom Shell	Speag	V8	MRTSUE06420	N/A	N/A
DAK	Speag	DAK-3.5	MRTSUE06435	N/A	N/A
DAE4	Speag	SD 000 D04 BN	MRTSUE06414	1 year	2020/05/22
E-Field Probe	Speag	EX3DV4	MRTSUE06438	1 year	2020/04/17
Network Analyzer	Keysight	N5234B	MRTSUE06454	1 year	2020/07/11
Directional Coupler	Agilent	778D	MRTSUE06083	1 year	2020/03/26
Directional Coupler	Agilent	87301D OPT 292	MRTSUE06082	1 year	2020/03/26
Signal Generator	Keysight	N5183B	MRTSUE06197	1 year	2020/04/15
Power Sensor	Keysight	U2021XA	MRTSUE06447	1 year	2020/06/30
Thermohygrometer	Testo	622	MRTSUE06361	1 year	2020/05/06

Software	Version	Function
DASY NEO	52.10.2.1495	SAR Test Software

## 11. Measurement Uncertainty

DASY5 Uncertainty Budget, according to IEEE 1528 (0.3 - 3 GHz range)								
Error Description	Uncert. value	Prob. Dist.	Div.	(ci) 1g	(ci) 10g	Std. Unc. (1g)	Std. Unc. (10g)	(vi) v <sub>eff</sub>
<b>Measurement System</b>								
Probe Calibration	±6.0 %	N	1	1	1	±6.0 %	±6.0 %	∞
Axial Isotropy	±4.7 %	R	$\sqrt{3}$	0.7	0.7	±1.9 %	±1.9 %	∞
Hemispherical Isotropy	±9.6 %	R	$\sqrt{3}$	0.7	0.7	±3.9 %	±3.9 %	∞
Boundary Effects	±1.0 %	R	$\sqrt{3}$	1	1	±0.6 %	±0.6 %	∞
Linearity	±4.7 %	R	$\sqrt{3}$	1	1	±2.7 %	±2.7 %	∞
System Detection Limits	±1.0 %	R	$\sqrt{3}$	1	1	±0.6 %	±0.6 %	∞
Modulation Response	±2.4 %	R	$\sqrt{3}$	1	1	±1.4 %	±1.4 %	∞
Readout Electronics	±0.3 %	N	1	1	1	±0.3 %	±0.3 %	∞
Response Time	±0.8 %	R	$\sqrt{3}$	1	1	±0.5 %	±0.5 %	∞
Integration Time	±2.6 %	R	$\sqrt{3}$	1	1	±1.5 %	±1.5 %	∞
RF Ambient Noise	±3.0 %	R	$\sqrt{3}$	1	1	±1.7 %	±1.7 %	∞
RF Ambient Reflections	±3.0 %	R	$\sqrt{3}$	1	1	±1.7 %	±1.7 %	∞
Probe Positioner	±0.02 %	R	$\sqrt{3}$	1	1	±0.0 %	±0.0 %	∞
Probe Positioning	±0.4 %	R	$\sqrt{3}$	1	1	±0.2 %	±0.2 %	∞
Max. SAR Eval.	±2.0 %	R	$\sqrt{3}$	1	1	±1.2 %	±1.2 %	∞
<b>Test Sample Related</b>								
Device Positioning	±2.9%	N	1	1	1	±2.9 %	±2.9 %	145
Device Holder	±3.6%	N	1	1	1	±3.6 %	±3.6 %	5
Power Drift	±5.0%	R	$\sqrt{3}$	1	1	±2.9 %	±2.9 %	∞
Power Scaling	±0%	R	$\sqrt{3}$	1	1	±0.0 %	±0.0 %	∞
<b>Phantom and Setup</b>								
Phantom Uncertainty	±6.1%	R	$\sqrt{3}$	1	1	±3.5 %	±3.5 %	∞
SAR correction	±1.9%	N	1	1	0.84	±1.9 %	±1.6 %	∞
Liquid Cond. (mea.) <sup>DAK</sup>	±2.5%	N	1	0.78	0.71	±2.0 %	±1.8 %	∞
Liquid Perm. (mea.) <sup>DAK</sup>	±2.5%	N	1	0.23	0.26	±0.6 %	±0.7 %	∞
Temp. unc. – Conductivity	±3.4%	R	$\sqrt{3}$	0.78	0.71	±1.5 %	±1.4 %	∞
Temp. unc. – Permittivity	±0.4%	R	$\sqrt{3}$	0.23	0.26	±0.1 %	±0.1 %	∞
<b>Combined Std. Uncertainty</b>						±11.3%	±11.2%	459
<b>Expanded STD Uncertainty</b>						±22.6%	±22.4%	

DASY5 Uncertainty Budget, according to IEEE 1528 (3 - 6 GHz range)								
Error Description	Uncert. value	Prob. Dist.	Div.	(ci) 1g	(ci) 10g	Std. Unc. (1g)	Std. Unc. (10g)	(vi) v <sub>eff</sub>
<b>Measurement System</b>								
Probe Calibration	±6.55 %	N	1	1	1	±6.55 %	±6.55 %	∞
Axial Isotropy	±4.7 %	R	$\sqrt{3}$	0.7	0.7	±1.9 %	±1.9 %	∞
Hemispherical Isotropy	±9.6 %	R	$\sqrt{3}$	0.7	0.7	±3.9 %	±3.9 %	∞
Boundary Effects	±2.0 %	R	$\sqrt{3}$	1	1	±1.2 %	±1.2 %	∞
Linearity	±4.7 %	R	$\sqrt{3}$	1	1	±2.7 %	±2.7 %	∞
System Detection Limits	±1.0 %	R	$\sqrt{3}$	1	1	±0.6 %	±0.6 %	∞
Modulation Response	±2.4 %	R	$\sqrt{3}$	1	1	±1.4 %	±1.4 %	∞
Readout Electronics	±0.3 %	N	1	1	1	±0.3 %	±0.3 %	∞
Response Time	±0.8 %	R	$\sqrt{3}$	1	1	±0.5 %	±0.5 %	∞
Integration Time	±2.6 %	R	$\sqrt{3}$	1	1	±1.5 %	±1.5 %	∞
RF Ambient Noise	±3.0 %	R	$\sqrt{3}$	1	1	±1.7 %	±1.7 %	∞
RF Ambient Reflections	±3.0 %	R	$\sqrt{3}$	1	1	±1.7 %	±1.7 %	∞
Probe Positioner	±0.04 %	R	$\sqrt{3}$	1	1	±0.0 %	±0.0 %	∞
Probe Positioning	±0.8 %	R	$\sqrt{3}$	1	1	±0.5 %	±0.5 %	∞
Max. SAR Eval.	±4.0 %	R	$\sqrt{3}$	1	1	±2.3 %	±2.3 %	∞
<b>Test Sample Related</b>								
Device Positioning	±2.9%	N	1	1	1	±2.9 %	±2.9 %	145
Device Holder	±3.6%	N	1	1	1	±3.6 %	±3.6 %	5
Power Drift	±5.0%	R	$\sqrt{3}$	1	1	±2.9 %	±2.9 %	∞
Power Scaling	±0%	R	$\sqrt{3}$	1	1	±0.0 %	±0.0 %	∞
<b>Phantom and Setup</b>								
Phantom Uncertainty	±6.6%	R	$\sqrt{3}$	1	1	±3.8 %	±3.8 %	∞
SAR correction	±1.9%	N	1	1	0.84	±1.9 %	±1.6 %	∞
Liquid Cond. (mea.) <sup>DAK</sup>	±2.5%	N	1	0.78	0.71	±2.0 %	±1.8 %	∞
Liquid Perm. (mea.) <sup>DAK</sup>	±2.5%	N	1	0.23	0.26	±0.6 %	±0.7 %	∞
Temp. unc. – Conductivity	±3.4%	R	$\sqrt{3}$	0.78	0.71	±1.5 %	±1.4 %	∞
Temp. unc. – Permittivity	±0.4%	R	$\sqrt{3}$	0.23	0.26	±0.1 %	±0.1 %	∞
<b>Combined Std. Uncertainty</b>						±11.9%	±11.8%	569
<b>Expanded STD Uncertainty</b>						<b>±23.8%</b>	<b>±23.6%</b>	

## Annex A - System Check Result

Test Date: 8/19/2019

### SystemPerformanceCheck-SAM2-D2450HSL

**DUT: Dipole 2450 MHz D2450V2; Type: D2450V2**

Communication System: CW; Frequency: 2450 MHz; Duty Cycle: 1:1

Medium parameters used:  $f = 2450$  MHz;  $\sigma = 1.85$  S/m;  $\epsilon_r = 39.72$ ;  $\rho = 1000$  kg/m<sup>3</sup>

Phantom section: Flat Section

DASY5 Configuration:

- Probe: EX3DV4 - SN7524; ConvF(7.5, 7.5, 7.5) @ 2450 MHz; Calibrated: 4/18/2019
- Sensor-Surface: 4mm (Mechanical Surface Detection)
- Electronics: DAE4 Sn1552; Calibrated: 5/23/2019
- Phantom: SAM2; Type: QD OVA 004 AA; Serial: 2089
- Measurement SW: DASY52, Version 52.10 (2); SEMCAD X Version 14.6.12 (7450)

**configuration/d=10mm, Pin=250mW, dist=4mm (EX-Probe)/Area Scan (7x9x1):** Measurement grid:

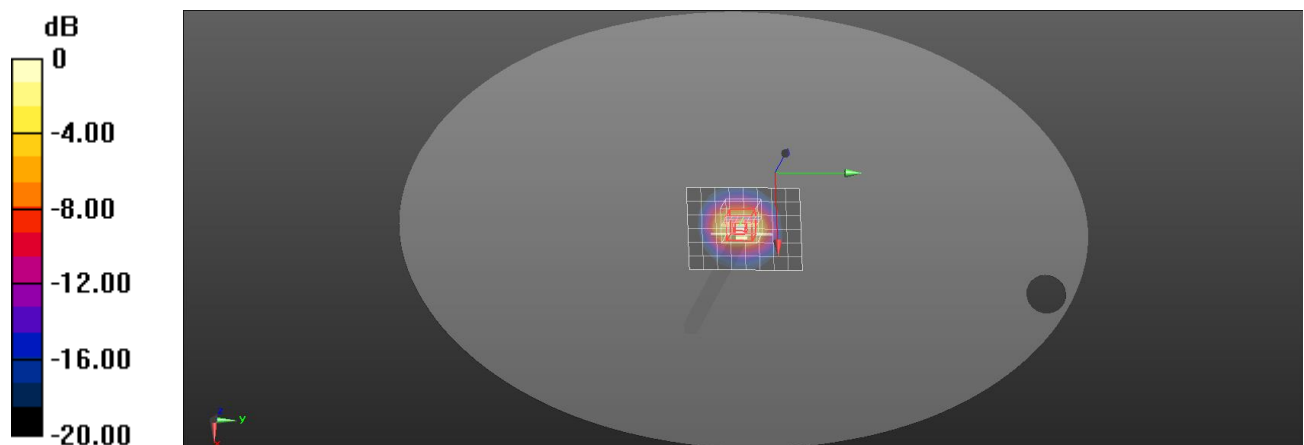
dx=12mm, dy=12mm; Maximum value of SAR (measured) = 14.3 W/kg

**configuration/d=10mm, Pin=250mW, dist=4mm (EX-Probe)/Zoom Scan (7x7x7)/Cube 0:**

Measurement grid: dx=5mm, dy=5mm, dz=5mm; Reference Value = 102.8 V/m; Power Drift = -0.04 dB

Peak SAR (extrapolated) = 27.5 W/kg

**SAR(1 g) = 13.2 W/kg; SAR(10 g) = 6.13 W/kg** Maximum value of SAR (measured) = 14.9 W/kg



0 dB = 14.9 W/kg = 11.73 dBW/kg



Test Date: 8/20/2019

# SystemPerformanceCheck-SAM2-D5250HSL

## DUT: Dipole D5GHzV2; Type: D5GHzV2

Communication System: CW; Frequency: 5250 MHz; Duty Cycle: 1:1

Medium parameters used:  $f = 5250 \text{ MHz}$ ;  $\sigma = 4.54 \text{ S/m}$ ;  $\epsilon_r = 34.94$ ;  $\rho = 1000 \text{ kg/m}^3$

Phantom section: Flat Section

DASY5 Configuration:

- Probe: EX3DV4 - SN7524; ConvF(5.19, 5.19, 5.19) @ 5250 MHz; Calibrated: 4/18/2019
- Sensor-Surface: 2mm (Mechanical Surface Detection)
- Electronics: DAE4 Sn1552; Calibrated: 5/23/2019
- Phantom: SAM2; Type: QD OVA 004 AA; Serial: 2089
- Measurement SW: DASY52, Version 52.10 (2); SEMCAD X Version 14.6.12 (7450)

**Configuration/d=10mm, Pin=100mW, dist=2mm (EX-Probe)/Area Scan (7x9x1):** Measurement grid:

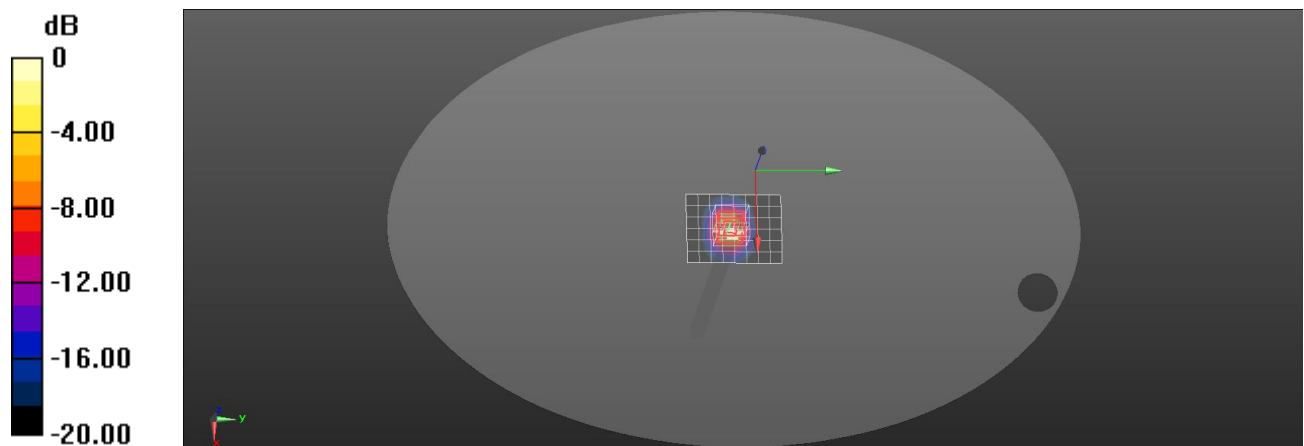
dx=10mm, dy=10mm; Maximum value of SAR (measured) = 13.8 W/kg

**Configuration/d=10mm, Pin=100mW, dist=2mm (EX-Probe)/Zoom Scan (8x8x8) (8x8x6)/Cube 0:**

Measurement grid: dx=4mm, dy=4mm, dz=2mm; Reference Value = 58.97 V/m; Power Drift = -0.08 dB

Peak SAR (extrapolated) = 33.8 W/kg

**SAR(1 g) = 8.41 W/kg; SAR(10 g) = 2.41 W/kg** Maximum value of SAR (measured) = 16.1 W/kg



0 dB = 16.1 W/kg = 12.07 dBW/kg

Test Date: 8/20/2019

## SystemPerformanceCheck-SAM2-D5600HSL

### DUT: Dipole D5GHzV2; Type: D5GHzV2

Communication System: CW; Frequency: 5600 MHz; Duty Cycle: 1:1

Medium parameters used:  $f = 5600$  MHz;  $\sigma = 4.92$  S/m;  $\epsilon_r = 34.34$ ;  $\rho = 1000$  kg/m<sup>3</sup>

Phantom section: Flat Section

DASY5 Configuration:

- Probe: EX3DV4 - SN7524; ConvF(4.85, 4.85, 4.85) @ 5600 MHz; Calibrated: 4/18/2019
- Sensor-Surface: 2mm (Mechanical Surface Detection)
- Electronics: DAE4 Sn1552; Calibrated: 5/23/2019
- Phantom: SAM2; Type: QD OVA 004 AA; Serial: 2089
- Measurement SW: DASY52, Version 52.10 (2); SEMCAD X Version 14.6.12 (7450)

**Configuration/d=10mm, Pin=100mW, dist=2mm (EX-Probe)/Area Scan (7x9x1):** Measurement grid:

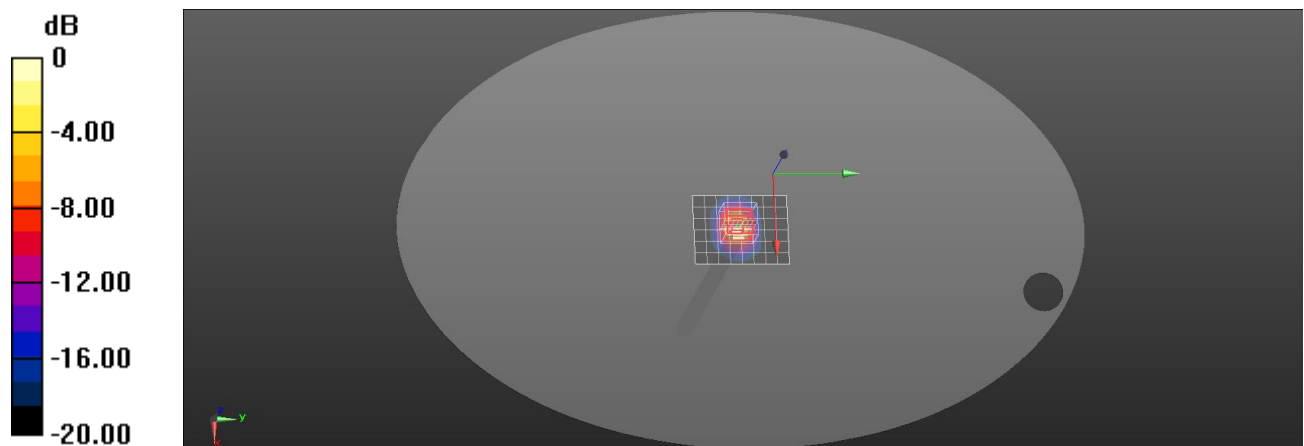
dx=10mm, dy=10mm; Maximum value of SAR (measured) = 15.3 W/kg

**Configuration/d=10mm, Pin=100mW, dist=2mm (EX-Probe)/Zoom Scan (8x8x8) (8x8x6)/Cube 0:**

Measurement grid: dx=4mm, dy=4mm, dz=2mm; Reference Value = 60.10 V/m; Power Drift = -0.03 dB

Peak SAR (extrapolated) = 38.3 W/kg

**SAR(1 g) = 8.71 W/kg; SAR(10 g) = 2.47 W/kg** Maximum value of SAR (measured) = 17.3 W/kg



0 dB = 17.3 W/kg = 12.38 dBW/kg

Test Date: 8/20/2019

# SystemPerformanceCheck-SAM2-D5750HSL

## DUT: Dipole D5GHzV2; Type: D5GHzV2

Communication System: CW; Frequency: 5750 MHz; Duty Cycle: 1:1

Medium parameters used:  $f = 5750 \text{ MHz}$ ;  $\sigma = 5.09 \text{ S/m}$ ;  $\epsilon_r = 34.07$ ;  $\rho = 1000 \text{ kg/m}^3$

Phantom section: Flat Section

DASY5 Configuration:

- Probe: EX3DV4 - SN7524; ConvF(4.95, 4.95, 4.95) @ 5750 MHz; Calibrated: 4/18/2019
- Sensor-Surface: 2mm (Mechanical Surface Detection)
- Electronics: DAE4 Sn1552; Calibrated: 5/23/2019
- Phantom: SAM2; Type: QD OVA 004 AA; Serial: 2089
- Measurement SW: DASY52, Version 52.10 (2); SEMCAD X Version 14.6.12 (7450)

**Configuration/d=10mm, Pin=100mW, dist=2mm (EX-Probe)/Area Scan (7x9x1):** Measurement grid:

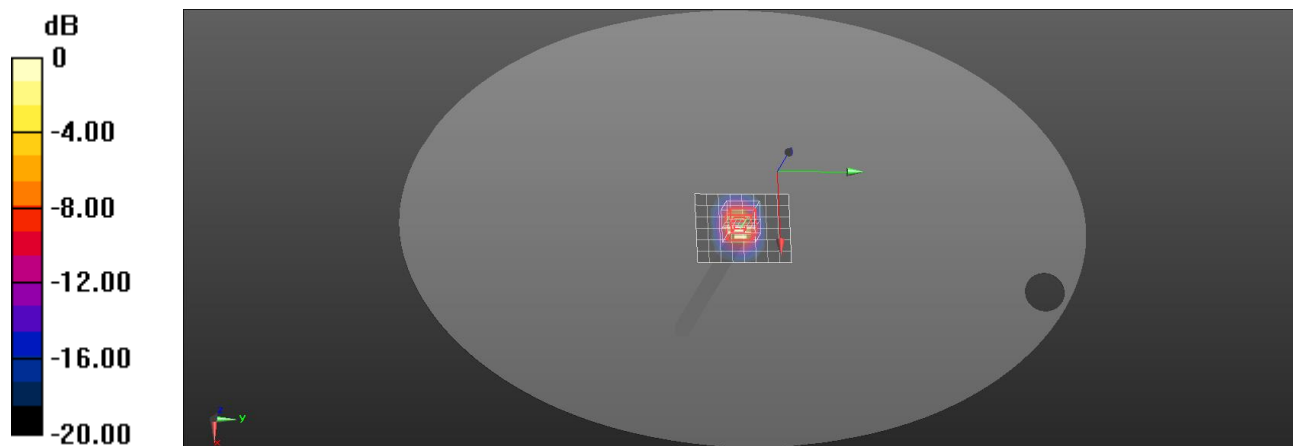
dx=10mm, dy=10mm; Maximum value of SAR (measured) = 14.3 W/kg

**Configuration/d=10mm, Pin=100mW, dist=2mm (EX-Probe)/Zoom Scan (8x8x8) (8x8x6)/Cube 0:**

Measurement grid: dx=4mm, dy=4mm, dz=2mm; Reference Value = 57.10 V/m; Power Drift = 0.01 dB

Peak SAR (extrapolated) = 37.0 W/kg

**SAR(1 g) = 8.05 W/kg; SAR(10 g) = 2.29 W/kg** Maximum value of SAR (measured) = 16.2 W/kg



0 dB = 16.2 W/kg = 12.10 dBW/kg

## Annex B - Test Data Plots

Plot 1#

Test Date: 8/19/2019

**DUT: VR All-In-One Headset; Type: A7B10**
**Procedure Name: 802.11n-HT20 2437MHz Forehead Ant1**

Communication System: 802.11n (HT20); Frequency: 2437 MHz; Duty Cycle: 1:1

Medium parameters used:  $f = 2437$  MHz;  $\sigma = 1.85$  S/m;  $\epsilon_r = 39.75$ ;  $\rho = 1000$  kg/m<sup>3</sup>; Tissue

Temp(celsius)-22.5°C; Phantom section: Flat Section

DASY5 Configuration:

- Probe: EX3DV4 - SN7524; ConvF(7.5, 7.5, 7.5) @ 2452 MHz; Calibrated: 4/18/2019
- Sensor-Surface: 4mm (Mechanical Surface Detection)
- Electronics: DAE4 Sn1552; Calibrated: 5/23/2019
- Phantom: SAM2; Type: QD OVA 004 AA; Serial: 2089
- Measurement SW: DASY52, Version 52.10 (2); SEMCAD X Version 14.6.12 (7450)

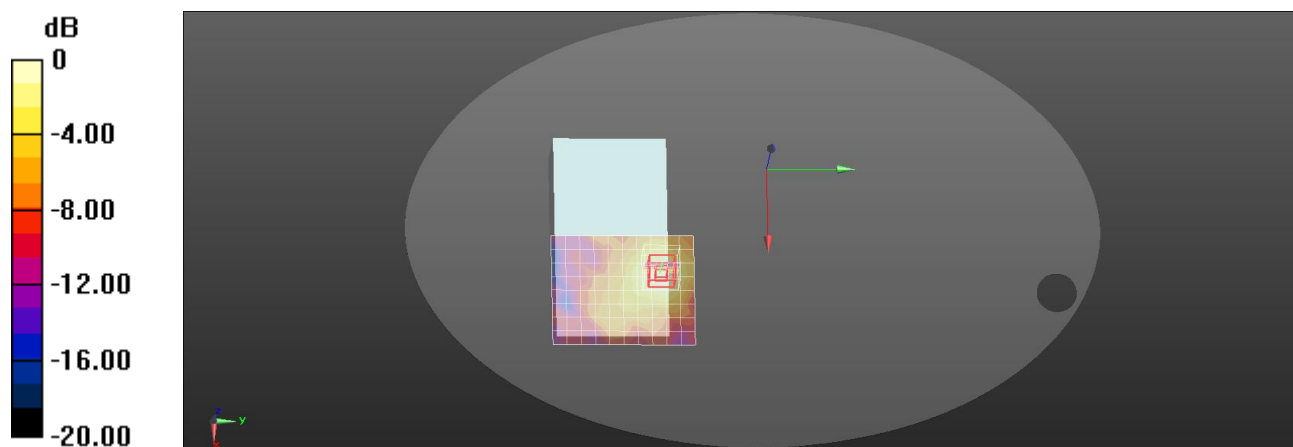
**Configuration/802.11n-HT20 2437MHz Face Towards/Area Scan (9x11x1):** Measurement grid:

dx=12mm, dy=12mm; Maximum value of SAR (measured) = 0.149 W/kg

**Configuration/802.11n-HT20 2437MHz Face Towards/Zoom Scan (7x7x7)/Cube 0:** Measurement grid:

dx=5mm, dy=5mm, dz=5mm; Reference Value = 2.279 V/m; Power Drift = -0.10 dB

Peak SAR (extrapolated) = 0.291 W/kg

**SAR(1 g) = 0.146 W/kg; SAR(10 g) = 0.077 W/kg** Maximum value of SAR (measured) = 0.158 W/kg


0 dB = 0.158 W/kg = -8.01 dBW/kg

Plot 2#

Test Date: 8/20/2019

**DUT: VR All-In-One Headset; Type: A7B10**
**Procedure Name: 802.11ac-VHT20 5500MHz Forehead Ant2**

Communication System: 802.11ac (VHT20); Frequency: 5500 MHz; Duty Cycle: 1:1

Medium parameters used:  $f = 5500$  MHz;  $\sigma = 4.81$  S/m;  $\epsilon_r = 34.51$ ;  $\rho = 1000$  kg/m<sup>3</sup>; Tissue

Temp(celsius)-22.5°C; Phantom section: Flat Section

DASY5 Configuration:

- Probe: EX3DV4 - SN7524; ConvF(4.85, 4.85, 4.85) @ 5500 MHz; Calibrated: 4/18/2019
- Sensor-Surface: 2mm (Mechanical Surface Detection)
- Electronics: DAE4 Sn1552; Calibrated: 5/23/2019
- Phantom: SAM2; Type: QD OVA 004 AA; Serial: 2089
- Measurement SW: DASY52, Version 52.10 (2); SEMCAD X Version 14.6.12 (7450)

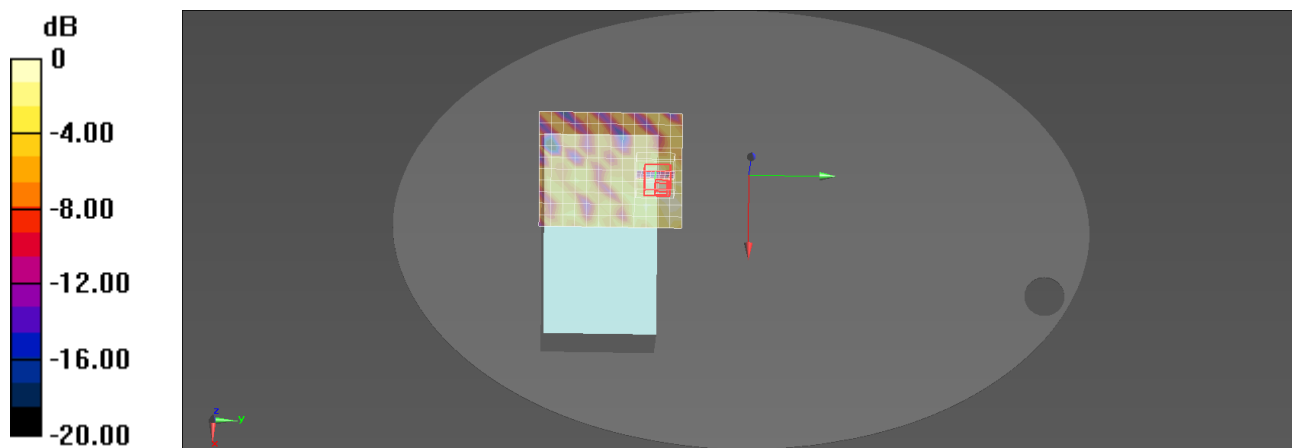
**Configuration/802.11ac-VHT20 5500MHz Face Towards/Area Scan (11x13x1):** Measurement grid:

dx=10mm, dy=10mm; Maximum value of SAR (measured) = 0.159 W/kg

**Configuration/802.11ac-VHT20 5500MHz Face Towards/Zoom Scan (9x9x6)/Cube 0:** Measurement

grid: dx=4mm, dy=4mm, dz=2mm; Reference Value = 2.284 V/m; Power Drift = -0.08 dB

Peak SAR (extrapolated) = 0.670 W/kg

**SAR(1 g) = 0.086 W/kg; SAR(10 g) = 0.036 W/kg** Maximum value of SAR (measured) = 0.182 W/kg


0 dB = 0.182 W/kg = -7.40 dBW/kg

## **Annex C - SAR Test Setup Photos**

Please refer to document “1907RSU061-UT”.

## **Annex D - EUT External Photos**

Please refer to document “1907RSU061-UE”.



## **Annex E - Equipment Calibration Report**

Please refer to document “Annex E - Equipment Calibration Report.pdf”.

\_\_\_\_\_ The End \_\_\_\_\_