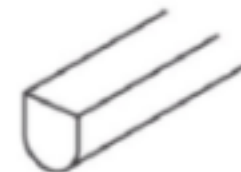
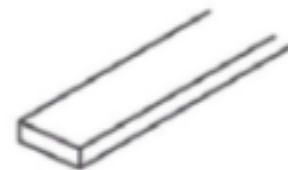


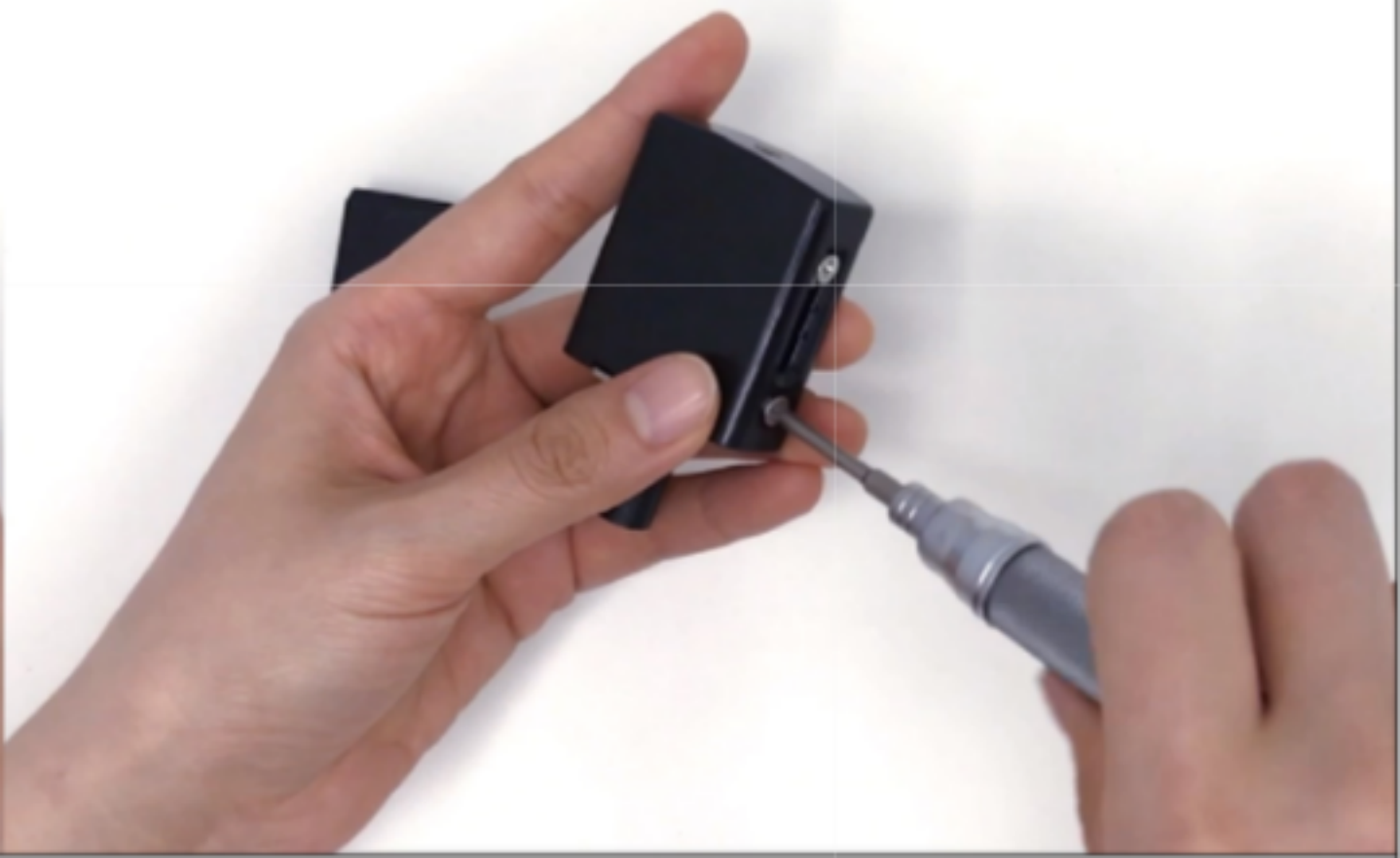
7

Please choose the right adapter depending on the shape of you original lock lever. if your lever is flat or cross shape, use the cross shape adapter. If you lever is "D" shape, go ahead and use the other one.

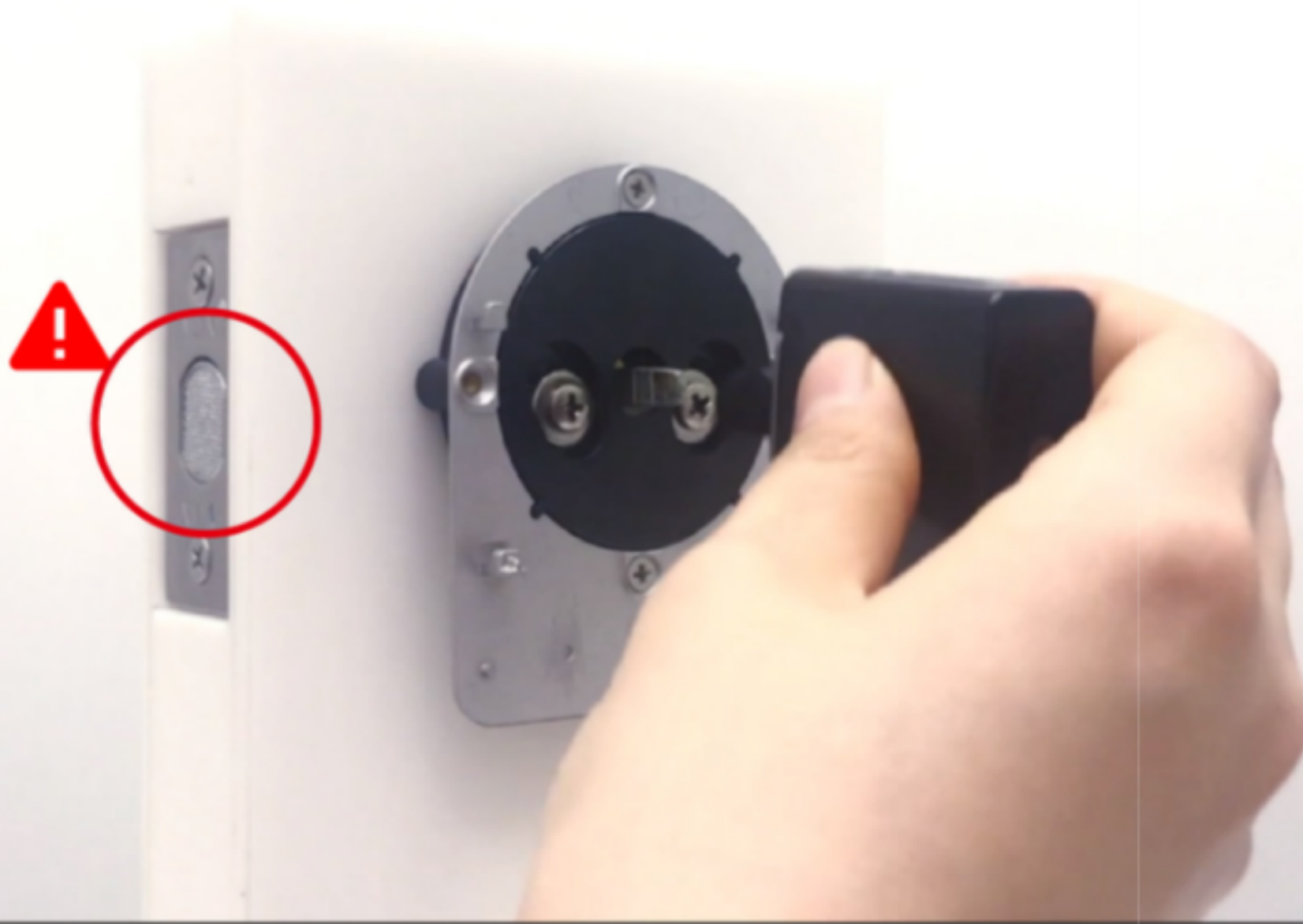


8

Put the adapter through the fixing plate, and into the key box, go ahead and tighten the screws back.



- 9 Insert the key box into the lock. Make sure the deadbolt is unlocked.



- 10 Install the SL-1 on the faceplate. Tighten all your screws back, and now the installation is finished.



After the SL-1 installation is complete, you need to download the oitsme app to initialize the device, and then use and manage the device through the app.

Enter the URL in your browser for app: <http://www.oitsme.com/download/global.html>

Or scan the QR code on the right to download the app.

Scan to download the app



1

Install



2

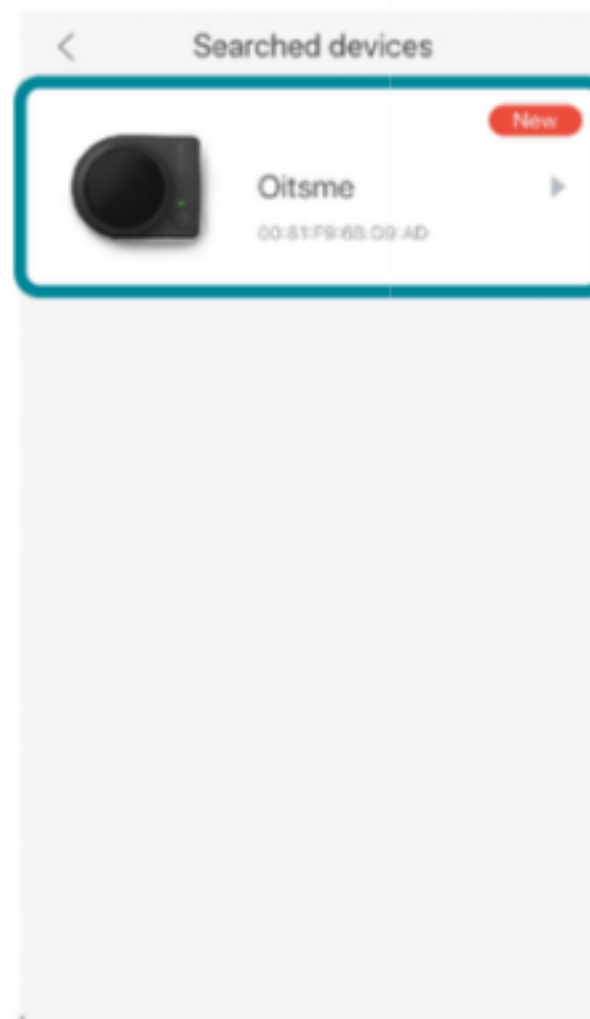
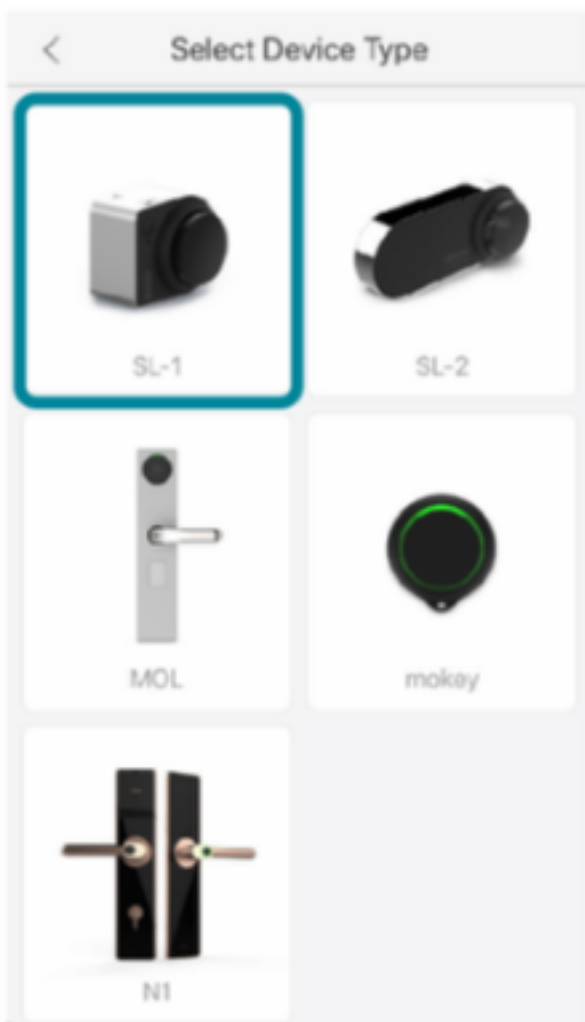
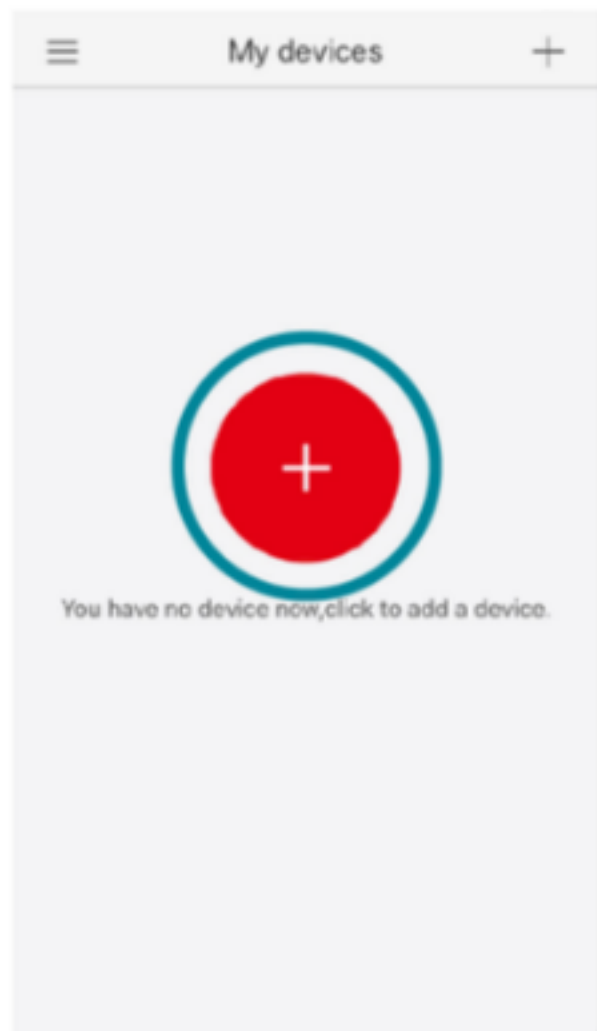
initialize



3

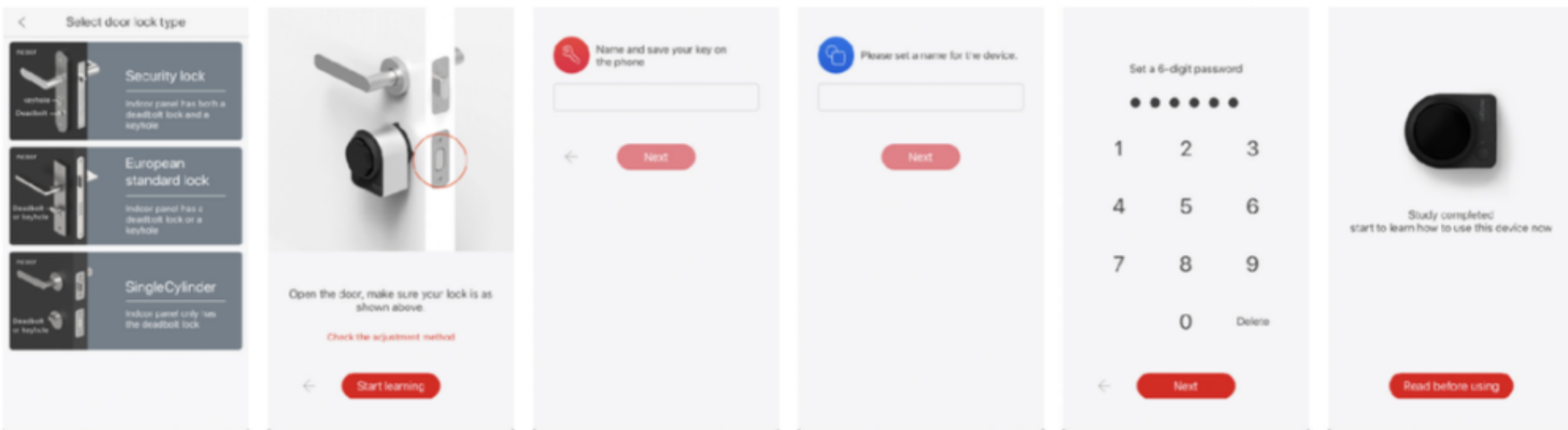
Use Guide

1 Connect to the SL-1 with app



2

Select the door lock type > Start learning lock and unlock > Name for the device > Name for your key > Set password > finished



After the initialization is complete, you can unlock or lock, and manage the device, such as adding or deleting keys, viewing operation records, and setting up the device.



1

Install



2

initialize



3

Use Guide

1

Unlock or lock with buttons on the device

Click button to unlock

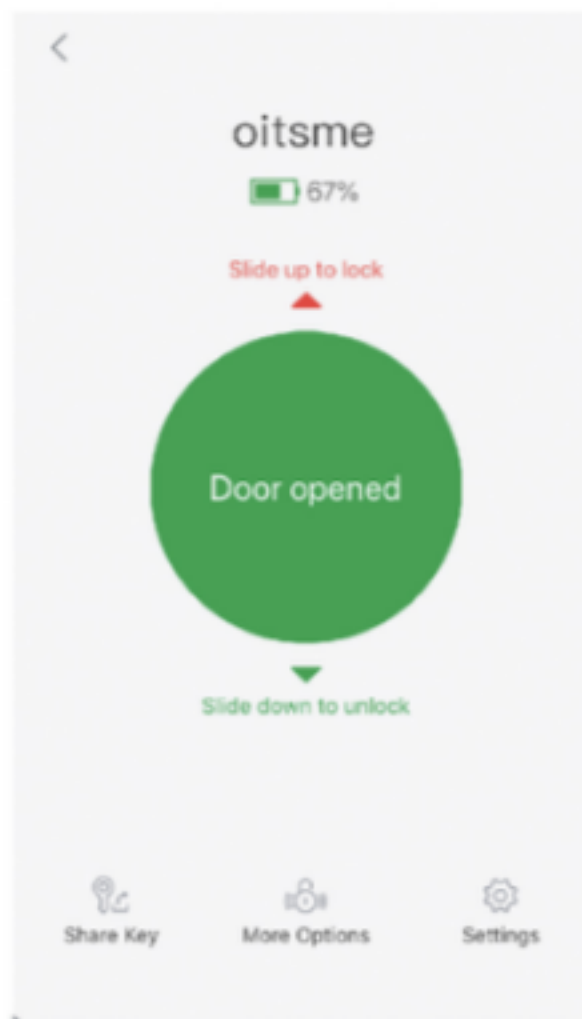
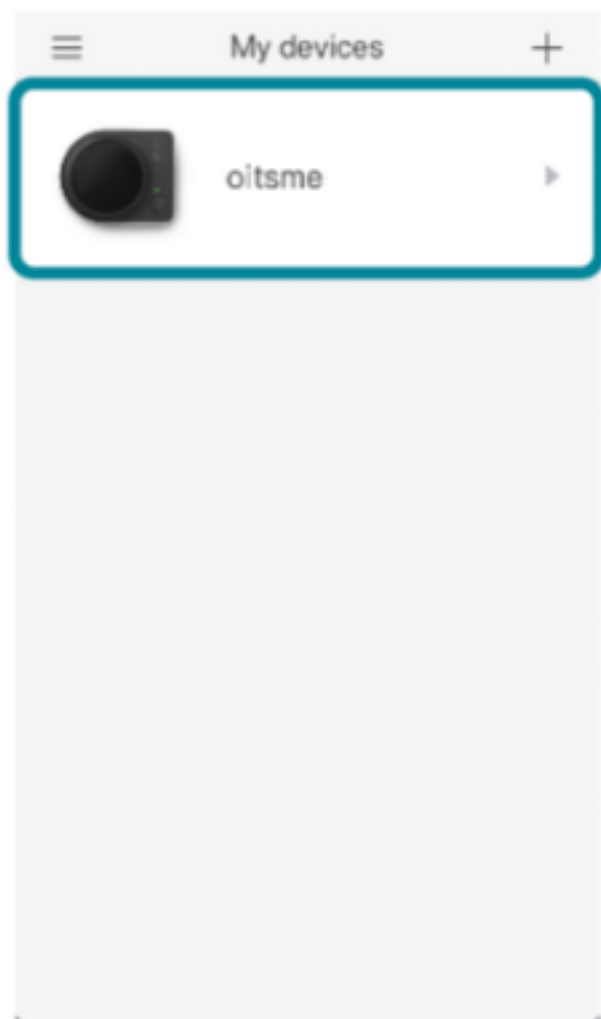


Press and hold button to lock



Last 7 seconds then auto-lock.
(Click to cancel lock)

2 Connect SL-1 and unlock or lock the door

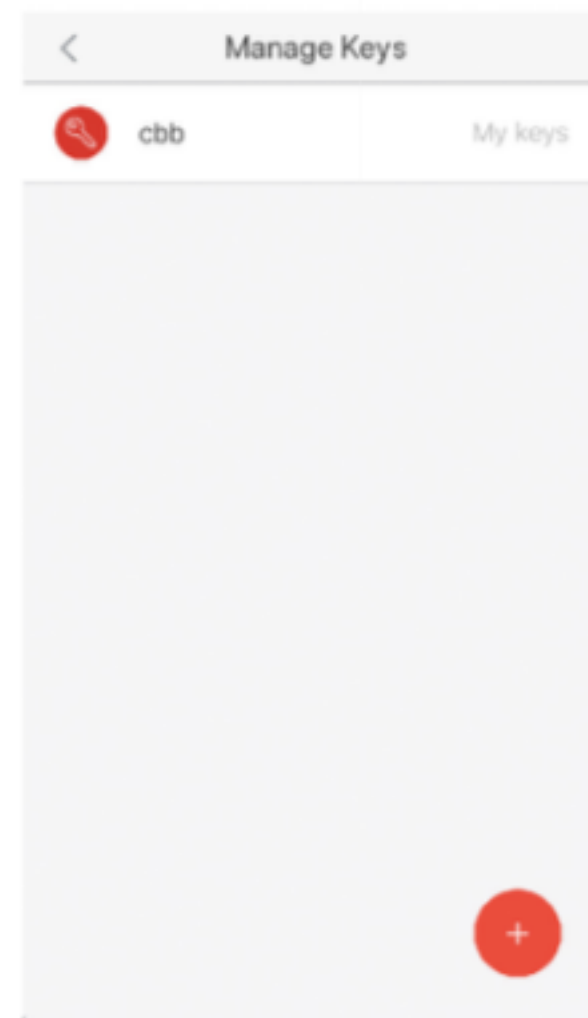
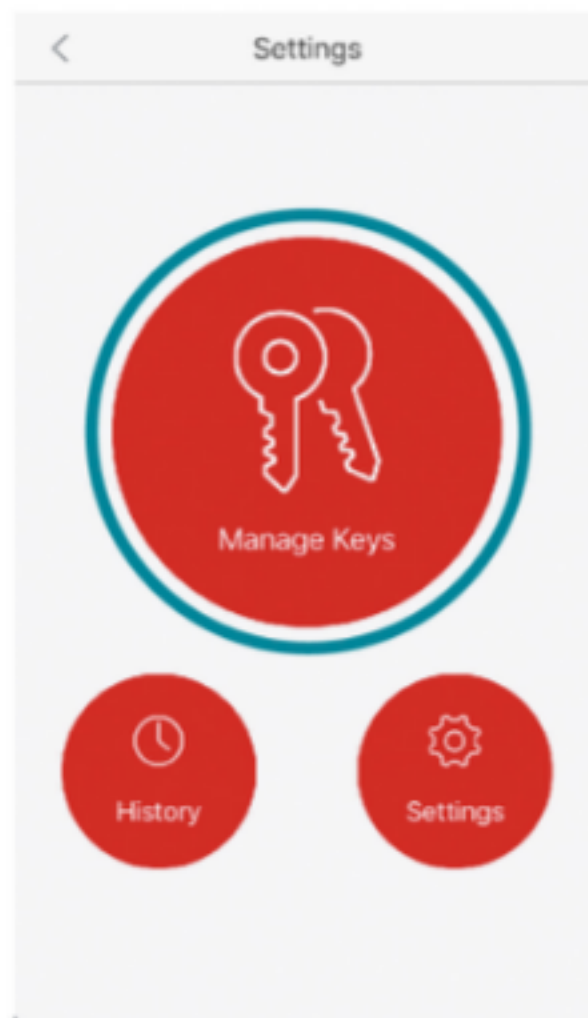


↑ Slide up to lock

↓ Slide down to unlock

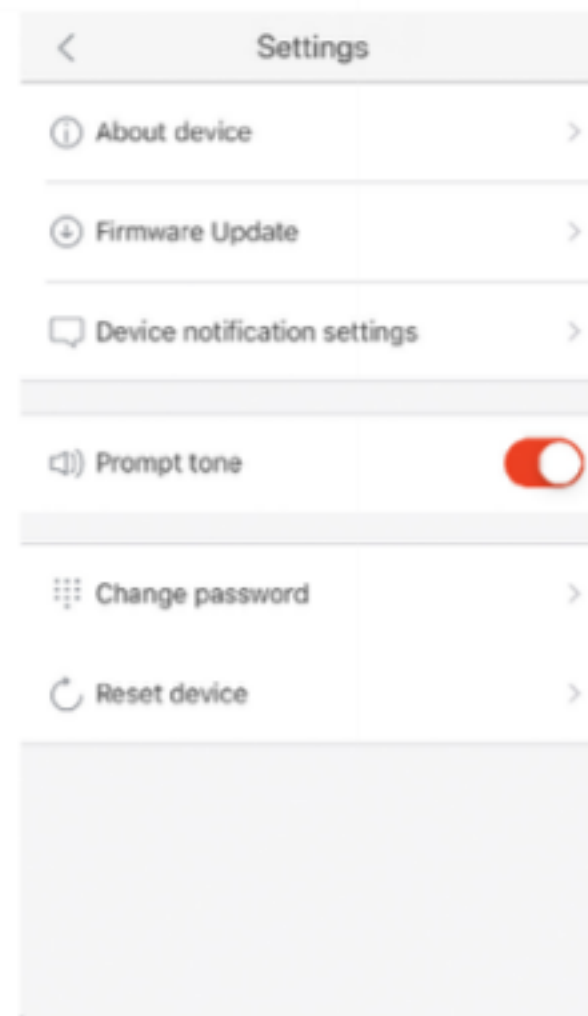
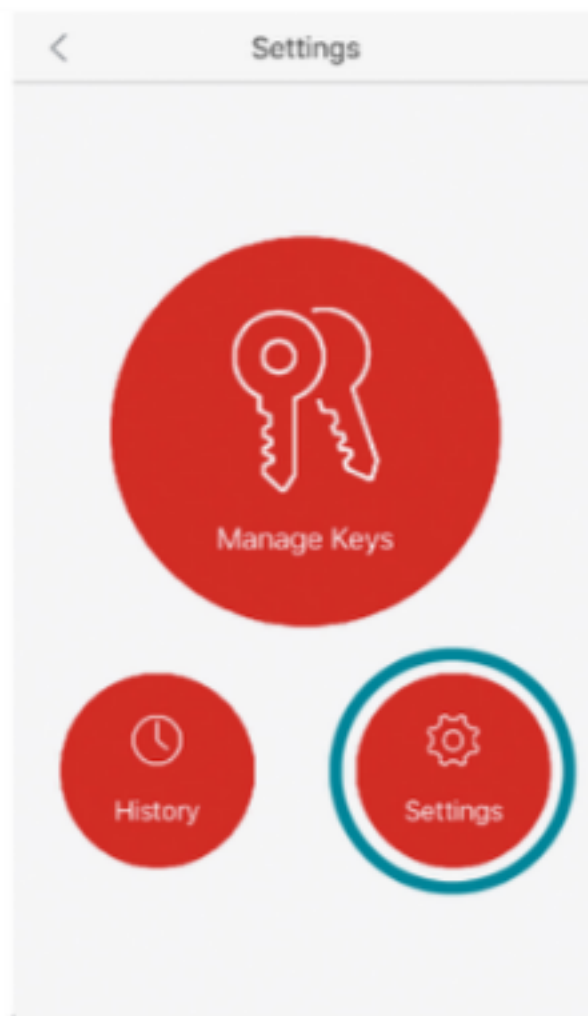
3

Management key



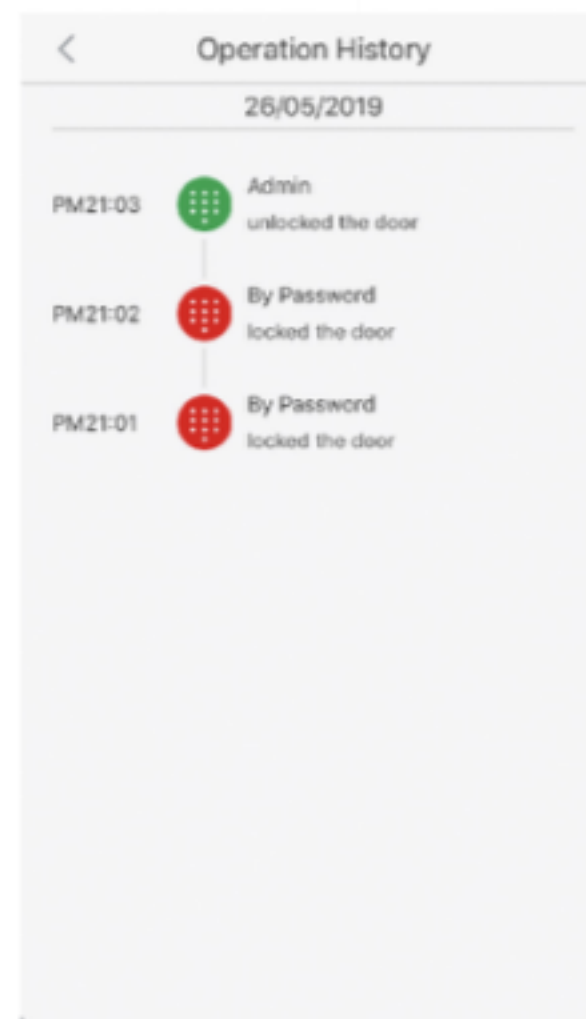
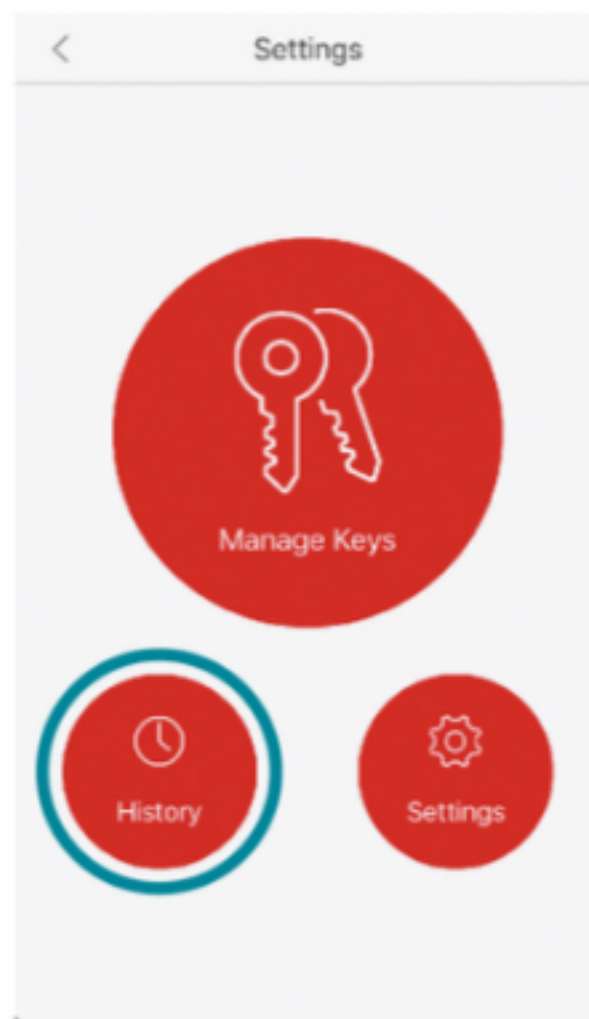
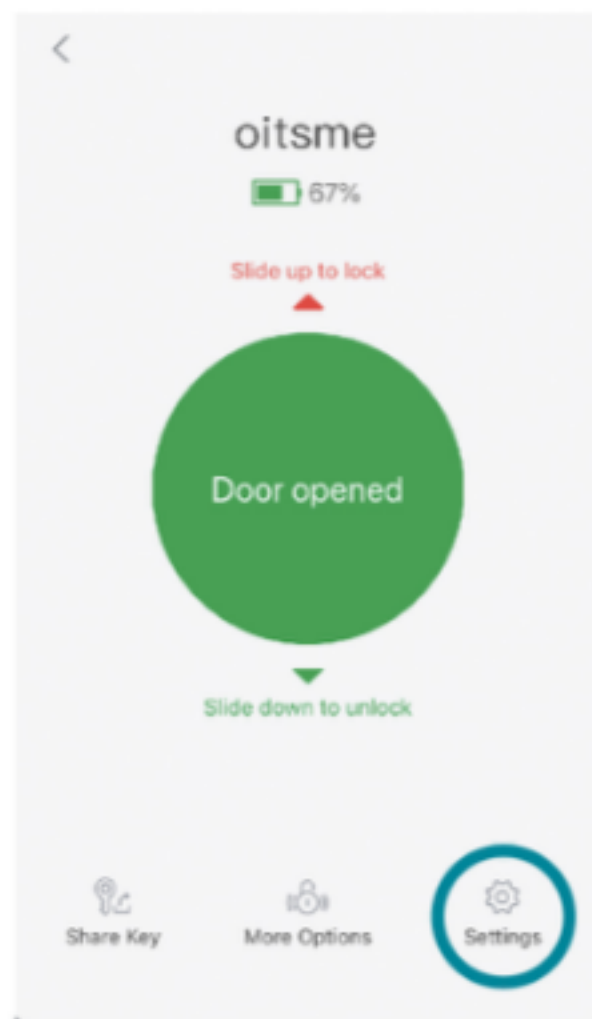
4

Management Background Setting



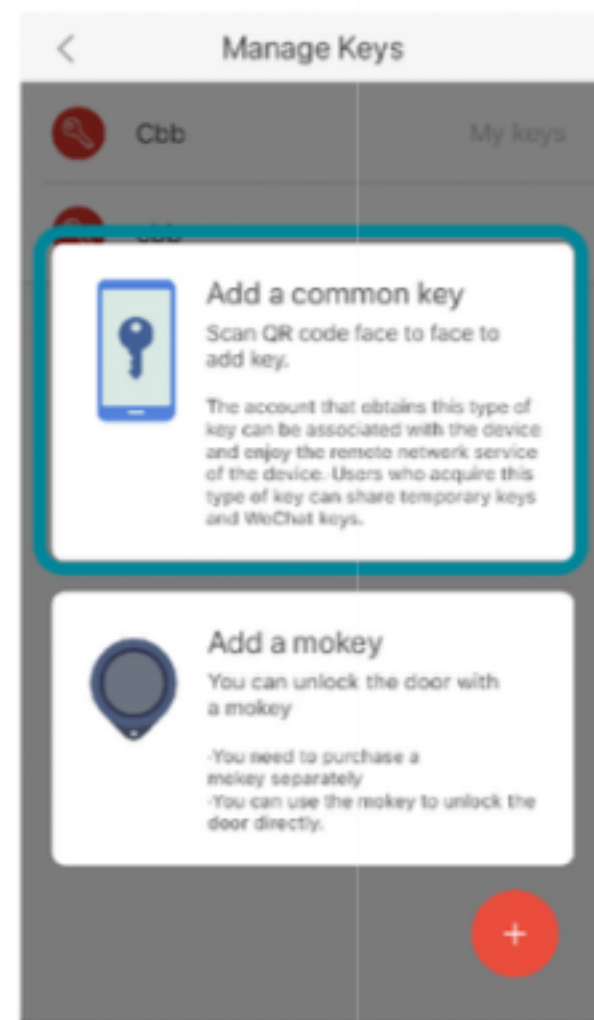
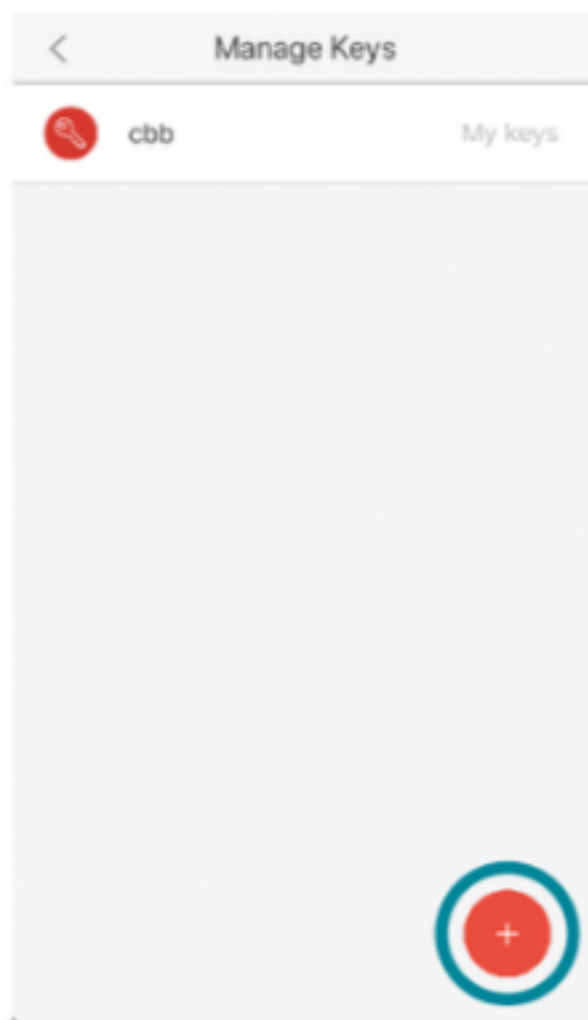
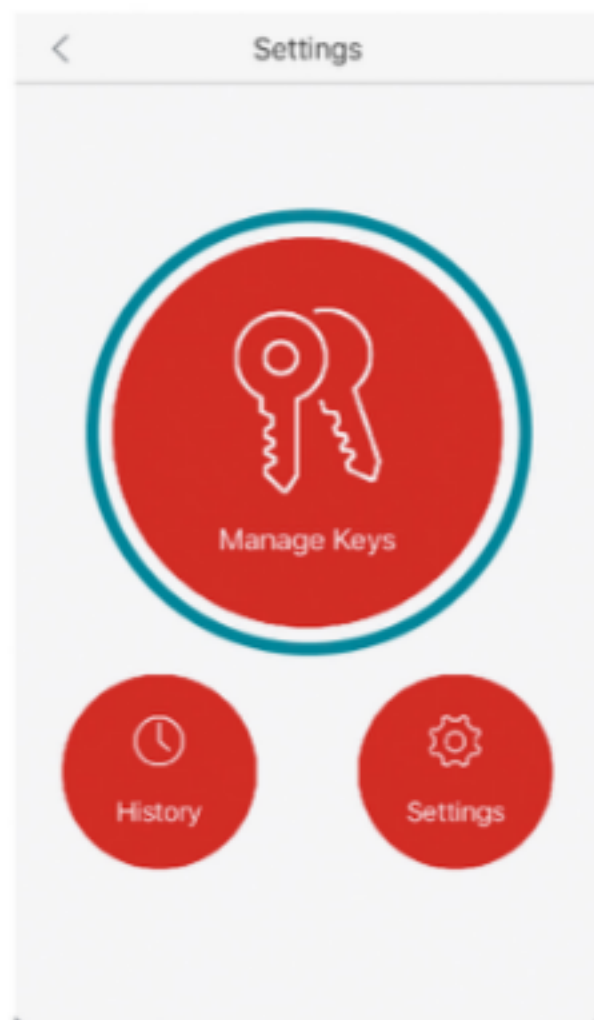
5

Viewing operation records

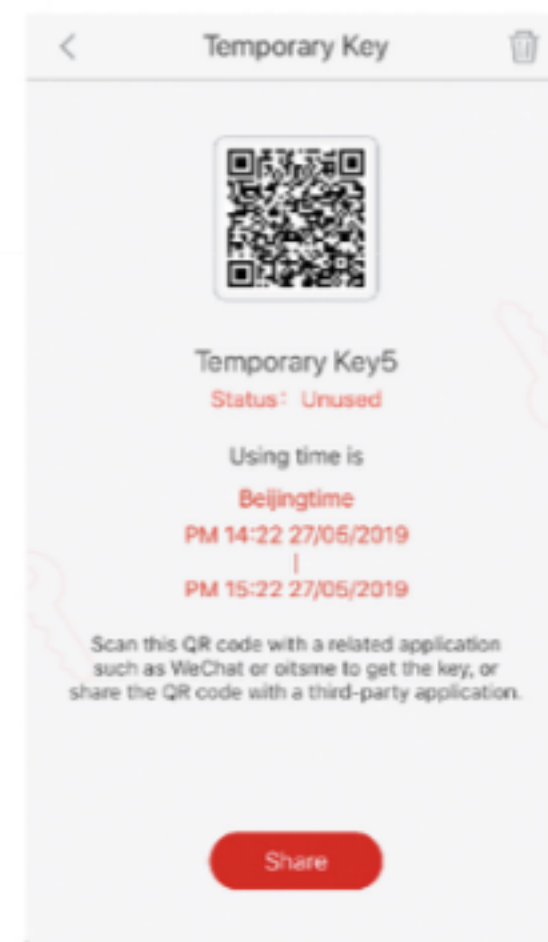
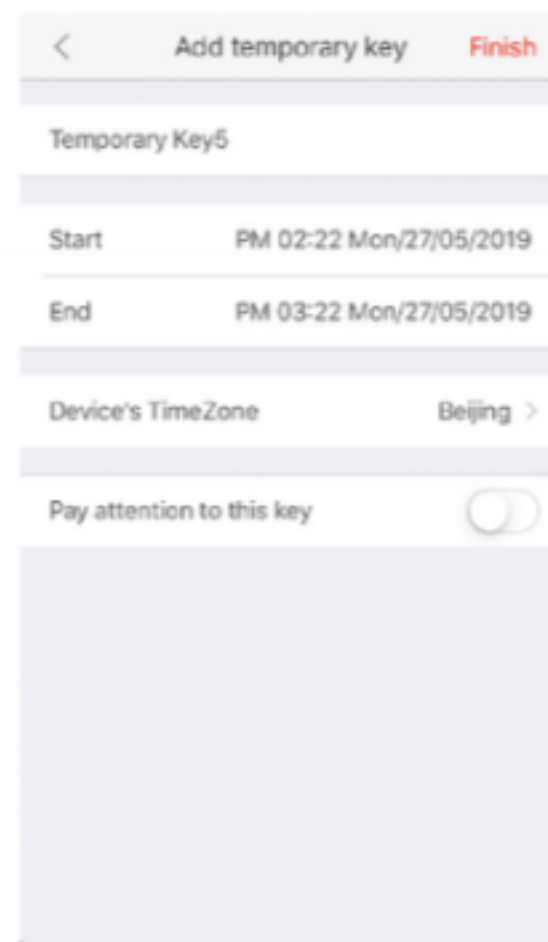


6

Create new key

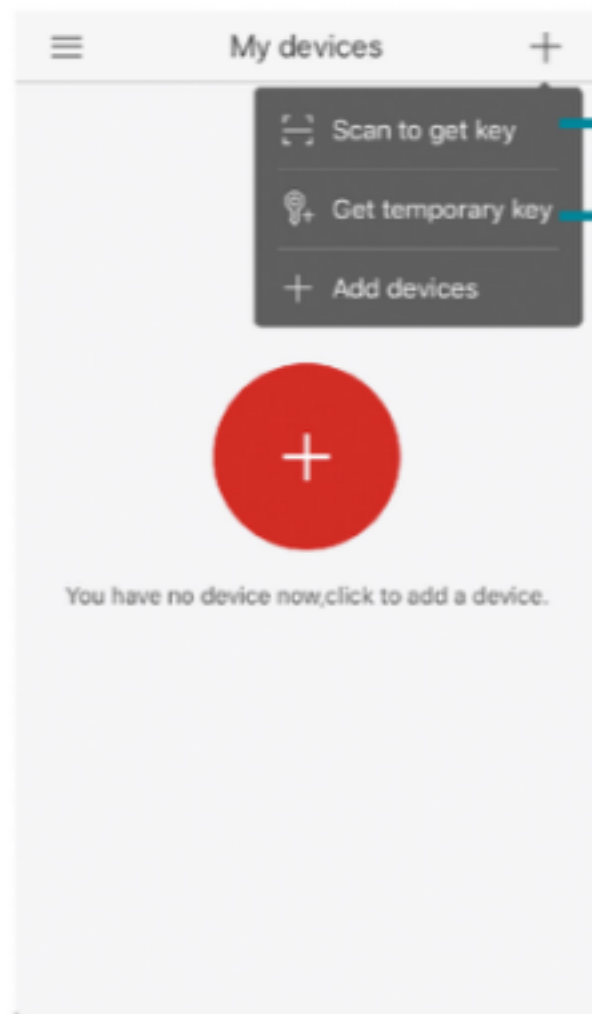


7 Share your key with other



8

Get key



FCC Warning Statement

Changes or modifications not expressly approved by the party responsible for compliance could void the user's authority to operate the equipment. This equipment has been tested and found to comply with the limits for a Class B digital device, pursuant to Part 15 of the FCC Rules. These limits are designed to provide reasonable protection against harmful interference in a residential installation. This equipment generates uses and can radiate radio frequency energy and, if not installed and used in accordance with the instructions, may cause harmful interference to radio communications. However, there is no guarantee that interference will not occur in a particular installation. If this equipment does cause harmful interference to radio or television reception, which can be determined by turning the equipment off and on, the user is encouraged to try to correct the interference by one or more of the following measures:

- - Reorient or relocate the receiving antenna.
- - Increase the separation between the equipment and receiver.
- - Connect the equipment into an outlet on a circuit different from that to which the receiver is connected.
- - Consult the dealer or an experienced radio/TV technician for help.

FCC Radiation Exposure Statement

The antennas used for this transmitter must be installed to provide a separation distance of at least 20 cm from all persons and must not be co - located for operating in conjunction with **any other antenna or transmitter.**