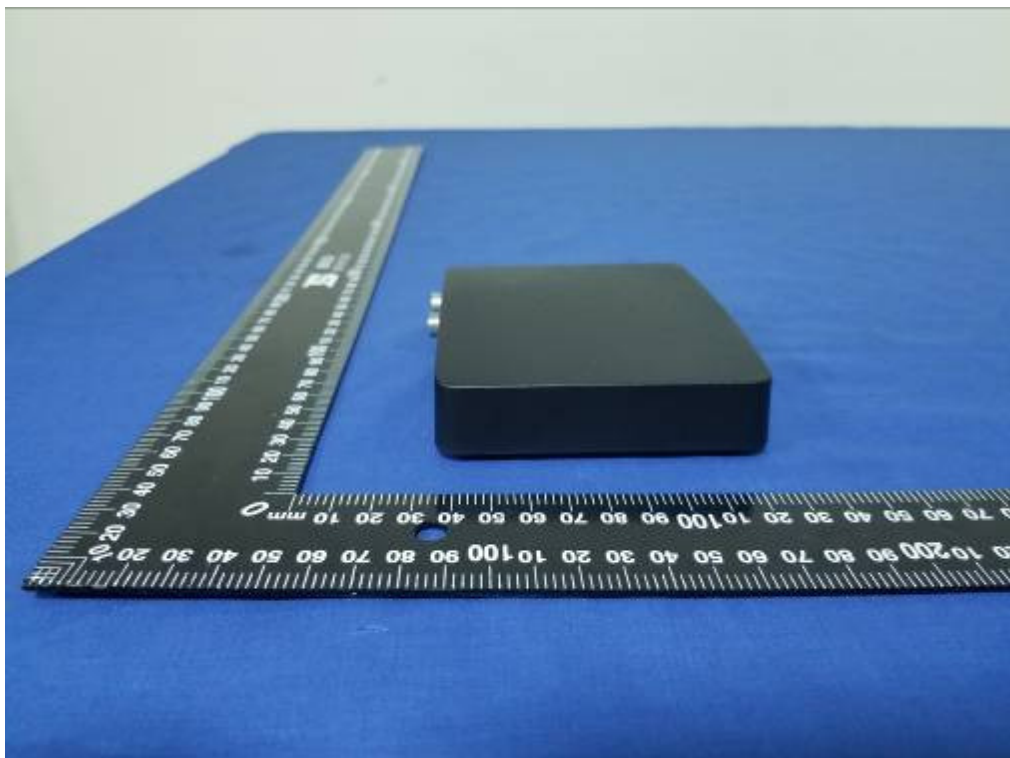




External Photo









in:xtnD™



In:xtnD Access A102-AD ver1.0

Power: 12VDC, 1A

CAN ICES-3(B)/NMB-3(B)

FCC ID: 2ATQM1000-0377



This device complies with part 15 of the FCC Rules.

Operation is subject to the following two conditions:

- (1) This device may not cause harmful interference, and
- (2) This device must accept any interference received, including interference that may cause undesired operation.

INCOAX Networks AB, Utmarksvägen 4, 802 91 Gävle, Sweden





