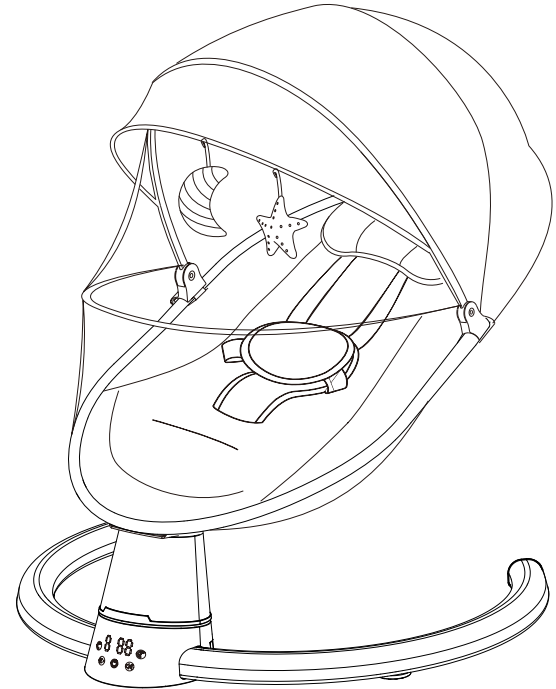


AUTO BABY SWING

USER MANUAL



IMPORTANT! KEEP IT FOR FUTURE REFERENCE.
Before installing and using, please follow the instructions
carefully to ensure the safety of your baby.

Product Contents

Product Introduction	2
Product Specification	2
Product Features	2
Parts Instruction	3
Installation	4
For Base Bracket	4
For Pillow and Seat Cover	4
For Canopy With Toys	5
Safety Belt Instruction	5
Assemble Instructions	6
User Instruction	7
Button Description	7
Button instruction	7
Motion Lock	8
Remote Control	8
Power Supply	8
WARNING	8
WARNING	9
Clean & Maintenance	9
Clean	9
Maintenance	9
Troubleshooting	10

Clean & Maintenance

Clean

1. Clean the base bracket and seat frame with wet cloth and a mild detergent. Dry thoroughly then. Please do not use corrosive cleaner.
2. Removable and washable fabric
 - Seat fabric: Clean it with wet cloth and a mild detergent, and dry it.
 - Canopy: Take it off and put a little cleaner, wash it gently by hands. Rinse it with clean water, and then hang it to dry, avoiding exposure to the sun.
 - Pillow: Tear the Velcro off and take the pillow off. Put a little cleaner, wash it gently by hands, and then rinse it with clean water. Hang it avoiding sun exposure.

Maintenance

1. Please check this baby swing regularly. Make sure of each part is well connected and well installed. Stop using for poor connection and connect/install it again if necessary.
2. This product contains electronic components, which shall not be used in water or in a humid environment. Please ensure the product is dry, and store it in a cool and dry place, avoiding direct sunshine for a long time.

Troubleshooting

Fast self-inspection solution below

No.	Trouble	Solution
1	Not energized	1. Check whether the adapter and DC cable are firmly connected. If loose, connect them firmly. 2. DC cable may be damaged. Please contact customer service to replace DC cable.
2	The power lamp keeps flashing	Use matchable adapter with an output voltage of 5V and 1A
3	Motion lock stuck	Check the motion lock. Pull it up to unlock the seat frame.
4	Overstring/Strike	Power off and restart it again

Note: For other trouble, please contact our customer service for help.
Never disassemble and repair the swing by yourself.

! WARNING

FALL and STRANGULATION HAZARDS:

Infants have suffered head injuries falling from swings and have strangled in straps.

FALL HAZARD: Children have suffered head injuries falling from rockers.

- ALWAYS use restraints. Adjust to fit snugly.
 - STOP using product when infant attempts to climb out (approximately 9 months).
 - Stay near and watch baby during use. This product is not safe for sleep or unsupervised use. If baby falls asleep, remove baby as soon as possible and place baby on a firm, flat sleep surface such as a crib or bassinet.
 - NEVER lift or carry baby in rocker.
 - STOP using product when baby starts trying to sit up or has reached [maximum weight not to exceed 20 lbs.], whichever comes first.
 - ALWAYS place rocker on floor. Never use on any elevated surface.
- SUFFOCATION HAZARD: Babies have suffocated when seats tipped over on soft surfaces.
- NEVER use on a bed, sofa, cushion, or other soft surface.
 - Stay near and watch child during use. This product is not safe for unsupervised use or unattended sleep.



FCC Compliance Statements

This device complies with Part 15 of the FCC Rules. Operation is subject to the following two conditions: (1) this device may not cause harmful interference, and (2) this device must accept any interference received, including interference that may cause undesired operation.

Note: This equipment has been tested and found to comply with the limits for a Class B digital device, pursuant to Part 15 of the FCC Rules. These limits are designed to provide reasonable protection against harmful interference in a residential installation. This equipment generates, uses and can radiate radio frequency energy and, if not installed and used in accordance with the instructions, may cause harmful interference to radio communications. However, there is no guarantee that interference will not occur in a particular installation. If this equipment does cause harmful interference to radio or television reception, which can be determined by turning the equipment off and on, the user is encouraged to try to correct the interference by one or more of the following measures:

- Reorient or relocate the receiving antenna.
- Increase the separation between the equipment and receiver.
- Connect the equipment into an outlet on a circuit different from that to which the receiver is connected.
- Consult the dealer or an experienced radio/TV technician for help. Caution: Changes or modifications not expressly approved by the party responsible for compliance could void the user's authority to operate the equipment.

This equipment complies with FCC radiation exposure limits set forth for an uncontrolled environment. This transmitter must not be co-located or operating in conjunction with any other antenna or transmitter. The base bracket should be installed and operated with minimum distance 20cm between the radiator and your body.

Product Introduction

Product Specification:

Product Name	Auto Baby Swing
Model Number	BB702
Input Voltage	100-240V~
Output Voltage	5V
Output Current	1A
Frequency	50/60Hz
Application	Children up to a weight of 9 kg or unable to sit up unaided
Main Material	100% polyester fiber, aviation aluminum base bracket
Certificate	EN12790, EN16232, ASTM F2088-22, ASTM F963-17

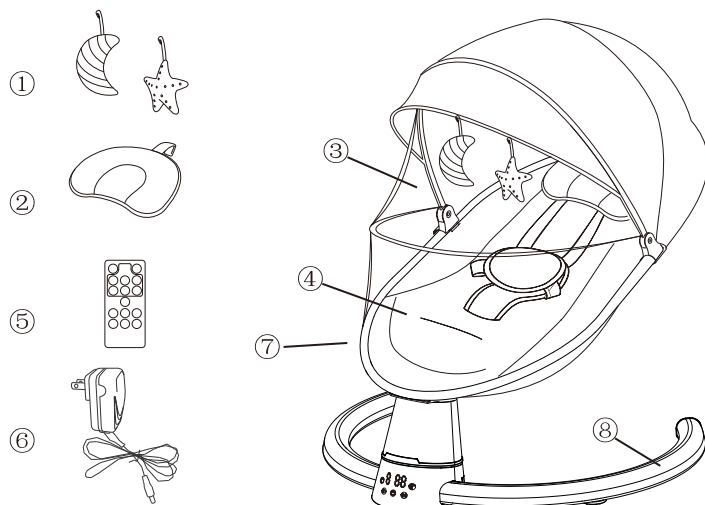
Product Features:

1. Swinging from side to side, with five gears mimicking human movement.
2. Protecting baby's spine design on the basis of human engineering.
3. Power supplied by safe 5V low voltage adapter.
4. One-button installation and disassembly, simple and convenient to use.
5. Seat cover made of environmental-friendly super soft fabric and non-textile, cozy, breathable and safe & removable and machine washable seat fabric.
6. Made of strong iron base bracket with light weight and strong hardness guaranteeing safety for baby.
7. Controlled by touching screen or remote controller, easy to operate
8. With motion lock and safety belt for protection.
9. With built-in soft nature sounds & Bluetooth enabled for music.

Parts Instruction

Make sure that all of the following parts listed are included in the box. If any part is missing, please contact us before operating. No tools are required for assembly.

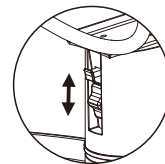
- | | |
|-------------------------------|---------------------------------------|
| 1) Plush toy*2 | 5) Remote controller |
| 2) Pillow*1 | 6) Adaptor*1, 2 meters of USB cable*1 |
| 3) Mosquito net with canopy*1 | 7) Seat frame*1 |
| 4) Seat cover | 8) Base bracket*1 |



Motion Lock

Push the motion lock down to lock the seat frame and stop movement.

Pull the motion lock up to unlock the seat frame and the baby swing will swing again.



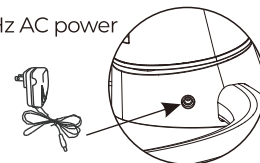
Remote Control

- | | | | |
|--|--|--|---------------|
| | Power on/off | | Play/pause |
| | Time setting | | Previous song |
| | Built-in music/
Bluetooth music | | Next song |
| | Volume up | | Volume down |
| | 1 | | 2 |
| | 3 | | 4 |
| | 5 | | 5 |
| | Sleep mode: press to enter sleep mode/gear 2 with timer 15 minutes | | |
| | Stop swing: press to stop swing, and press any gear key to resume swing. | | |



Power Supply

- DC plug can be inserted into 100-240V ~ 50 / 60Hz AC power supply.
- Adapter output parameters: voltage is 5V and current is 1A.



⚠ WARNING

- The power terminals must not be short-circuited.
- Do not use adapters other than those supplied with this product to power the product.
- Keep children away from working adapter.
- Check the adapter cable connection regularly.

User Instruction

Button Description



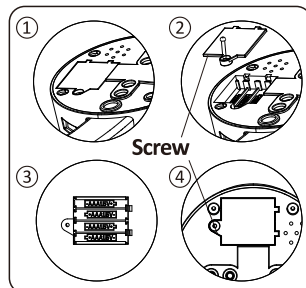
- Power On/Off Key
- Music Play/Pause Key
- Music Switch & Volume Up/Down Key
- Five Swing gears
- Timer setting, 3 preset option

Button instruction

- Power On/Off Key: Touch this button and the indicator light is on. Touch it again to turn the swing off.
- Swing Gear Setting: Touch the button to adjust swing settings. There are five gears of the swing.
the swinging angle is: 0x-0°, 1x-18°, 2x-21°, 3x-23°, 4x-25°, 5x-31°, the swing angle will be smaller after loading
Note: 1. When gear 0 under no timer setting, the gear indicator light and timer light are both on;
2. Automatically back to Gear 0 when inspected unusual swinging or strike by something.
- Timer Setting: Touch the button 1-3 times to choose the swing time.
8/15/30 minutes.
- Music Play: Touch the button to play the built-in music. Touch it again to turn the sound off.
- Volume Up/Down:
Touch the button in 1 second to adjust the volume,
Touch the button in 2-3 second to play next song.
- Open the Bluetooth connection of the mobile phone to "BT_BABY", and the song can be played directly after the connection is successful.

Batteries Installation

1. Find the battery compartment location firstly, which is with screen printing battery icon. See figure ①
2. Unscrew the battery compartment and remove the battery cover. See figure ②
3. Put in 4 pcs of AAA alkaline batteries. See figure ③
4. Put the battery cover back and screw it tightly. See figure ④

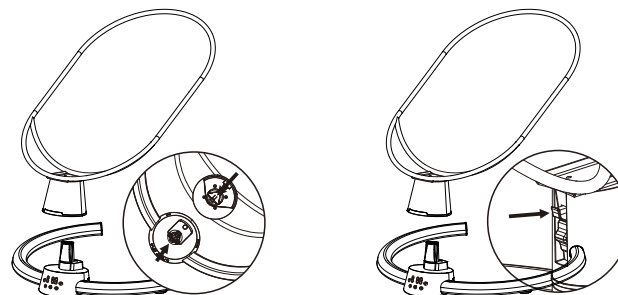


Installation

For Base Bracket

Assembling: Put the frame in the base with “” shape components aligned.

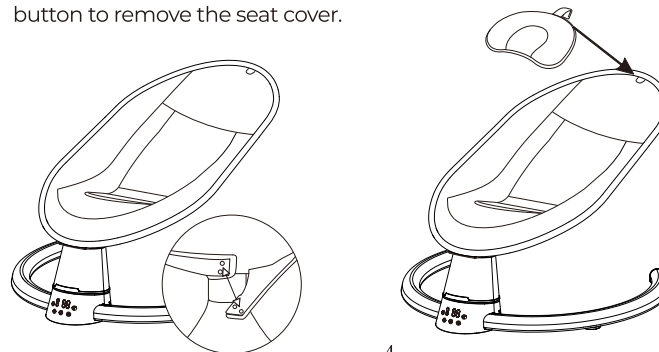
Disassembling: Pull out of the sheet metal and pull up the seat frame.



For Pillow and Seat Cover

Installation: Put the seat cover on the seat frame and fasten the snap button on the back. Attach the pillow to the top retaining ring of the seat frame and press the Velcro of the pillow.

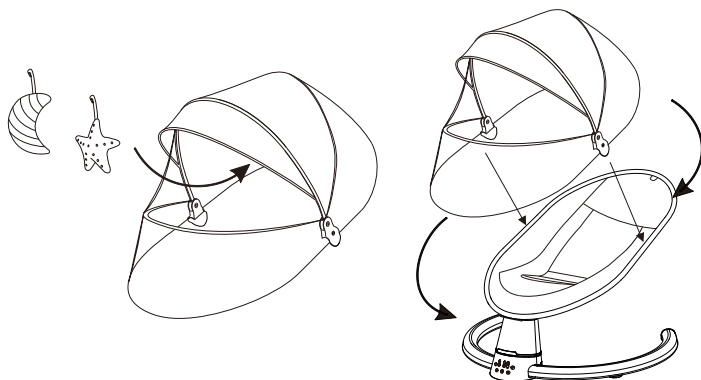
Removing: Pull off the Velcro to detach the pillow and unfasten the snap button to remove the seat cover.



For Canopy With Toys

Installation: Attach the toys on canopy and fasten the clasps to the pipe of the seat frame, and attach mosquito net to the bottom of the seat frame.

Dismantling: Put out of the clasps to remove the canopy.



Safety Belt Instruction

Place the baby into the swing and let his legs across both sides of the crotch support restraint, then turn the crotch support cover up. Adjust the seat belt on both sides and buckle up.

Note: Be sure to use the safety belt correctly when your baby lie on the baby swing for the safety of your child. Buckle off when you take your baby out of swing.

