

After-sales Service

Thank you for purchasing our products. If there is any quality problem, please contact with the distributor.

Note:

1. From the purchase date, normal users can enjoy one year's free maintenance service for the circuit board components and one year's free maintenance service for the whole machine.
2. Other consumables and accessories are not covered by the warranty.

Non-warranty Coverage:

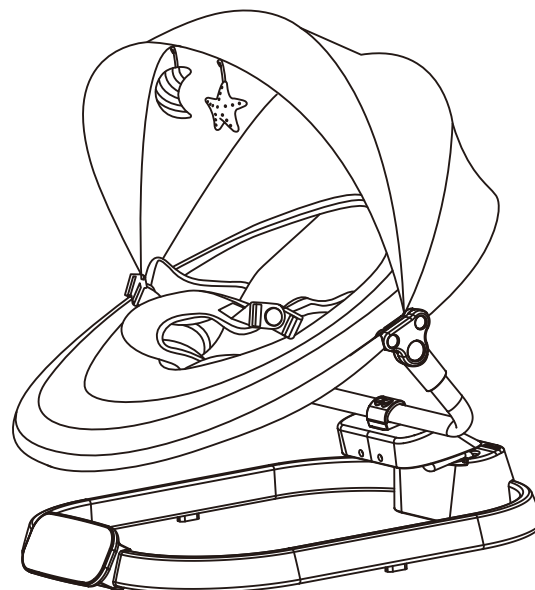
1. Improper use
2. Damage caused by natural disasters and other irresistible forces

Manufacturer: Foshan Baby Bear Technology Co.,Ltd
Address: No. 11-3, Xing Ye Zhong Road, Changjiao Residential
Committee, Lunjiao, Shunde, Foshan, Guangdong, China.

bioby

MULTI-FUNCTION ELECTRIC SWING

USER MANUAL



MODEL: BB501

IMPORTANT! KEEP IT FOR FUTURE REFERENCE.
Before installing and using, please follow the instructions
carefully to ensure the safety of your baby.

Product Contents

Product Contents	
Product Introduction	2
Product Specification	2
Product Features.....	2
Parts Instruction	3
Parts list.....	3
Installation	3
Assemble/disassemble base stand	3
To unfold the seat frame	4
Adjust the backrest	4
For Canopy Whit Toys	5
Safety Belt Instuction	5
User Instruction.....	6
Button Description	6
Lock/Unlock	7
Remote Control	7
Power Supply	7
WARNING	7
WARNING	8-9
Clean & Maintenance.....	10
Clean	10
Maintenance	10
Troubleshooting.....	10
After-sales Service	11

Clean & Maintenance

Clean

1. Clean the base bracket and seat frame with wet cloth and a mild detergent. Dry thoroughly then. Please do not use corrosive cleaner.
2. Removable and washable fabric
 - Seat fabric: Clean it with wet cloth and a mild detergent, and dry it.
 - Canopy: Take it off and put a little cleaner, wash it gently by hands. Rinse it with clean water, and then hang it to dry, avoiding exposure to the sun.
 - Pillow: Tear the Velcro off and take the pillow off. Put a little cleaner, wash it gently by hands, and then rinse it with clean water. Hang it avoiding sun exposure.

Maintenance

1. Please check this baby swing regularly. Make sure of each part is well connected and well installed. Stop using for poor connection and connect/install it again if necessary.
2. This product contains electronic components, which shall not be used in water or in a humid environment. Please ensure the product is dry, and store it in a cool and dry place, avoiding direct sunshine for a long time.

Troubleshooting

Fast self-inspection solution below

No.	Trouble	Solution
1	Not energized	1. Check whether the adapter and DC cable are firmly connected. If loose, connect them firmly. 2. DC cable may be damaged. Please contact customer service to replace DC cable.
2	The power lamp keeps flashing	Use matchable adapter with an output voltage of 5V and 1A
3	Motion lock stuck	Check the motion lock. Pull it up to unlock the seat frame.
4	Overstring/Strike	Power off and restart it again

Note: For other trouble, please contact our customer service for help.
Never disassemble and repair the swing by yourself.

FCC Compliance Statement

This device complies with Part 15 of the FCC Rules. Operation is subject to the following two conditions:

- (1) this device may not cause harmful interference, and
- (2) this device must accept any interference received, including interference that may cause undesired operation.

Notes: This equipment has been tested and found to comply with the limits for a Class B digital device, pursuant to Part 15 of the FCC Rules. These limits are designed to provide reasonable protection against harmful interference in a residential installation.

This equipment generates, uses and can radiate radio frequency energy and, if not installed and used in accordance with the instructions, may cause harmful interference to radio communications. However, there is no guarantee that interference will not occur in a particular installation. If this equipment does cause harmful interference to radio or television reception, which can be determined by turning the equipment off and on, the user is encouraged to try to correct the interference by one or more of the following measures:

- Reorient or relocate the receiving antenna.
- Increase the separation between the equipment and receiver.
- Connect the equipment into an outlet on a circuit different from that to which the receiver is connected.
- Consult the dealer or an experienced radio/TV technician for help.

Cautions: changes or modifications not expressly approved by the party responsible for compliance could void the user's authority to operate the equipment.

This equipment complies with FCC radiation exposure limits set forth for an uncontrolled environment. This transmitter must not be co-located or operating in conjunction with any other antenna or transmitter.

Product Introduction

Product Specification:

Product Name	MULTI-FUNCTION ELECTRIC SWING
Model Number	BB501
Input Voltage	100-240V~
Output Voltage	5V
Output Current	1A
Frequency	50/60Hz
Application	Children up to a weight of 9 kg or unable to sit up unaided
Main Material	100% polyester fiber, aviation aluminum base bracket
Certificate	EN12790, EN16232, ASTM F2088-20, ASTM F963-17

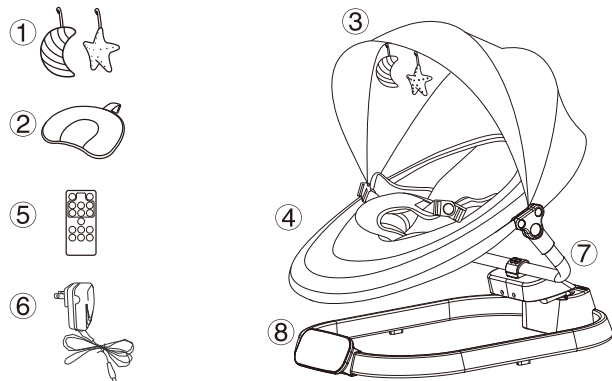
Product Features:

1. Soft fabric brings safe and comfort feeling.
2. Protecting baby's spine design on the basis of human engineering.
3. Controlled by touching screen or remote controller, easy to operate.
4. With built-in soft songs & Bluetooth enabled for music.
5. With broadening seat, removeable seat cover, mosquito netting.

Parts Instruction

Parts List

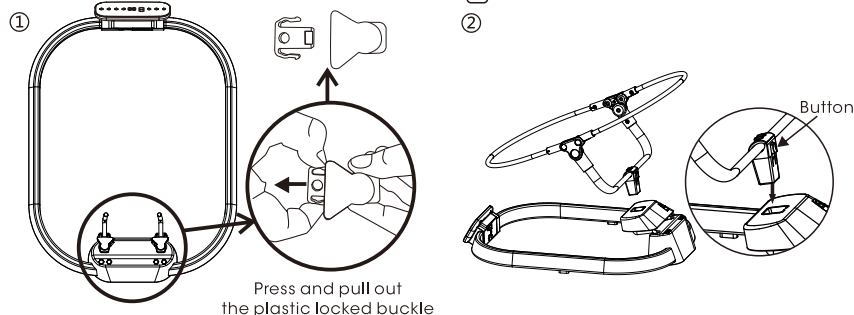
- | | |
|------------------|-------------------------|
| 1.Toys*2 | 5.Remote*1 |
| 2.Pillow*1 | 6.Adapter*1 USB Cable*1 |
| 3.Mosquito Net*1 | 7.Seat Frame*1 |
| 4.Seat Cover*1 | 8.Seat Base*1 |



Installation

Assemble/disassemble base stand

Assemble: 1.Remove the plastic locked buckle from the base stand
2.Put the seat frame in the base with "□" shape components aligned



Disassemble: Press the button and pull up the seat frame from the base (stand back side of the swing)

! WARNING



1. Never leave the child unattended.
2. Do not use this product once your child can sit up unaided or weighs more than 9 kg.
3. This product is not intended for prolonged periods of sleeping.
4. Never use this product on an elevated surface (e.g. a table).
5. Always use the restraint system.
6. To avoid injury ensure that children are kept away when unfolding and folding this product.
7. Do not let children play with this product.
8. Do not move or lift this product with the baby inside it.
9. This product does not replace a cot or a bed. Should your child need to sleep, then it should be placed in a suitable cot or bed.
10. Do not use the product if any components are broken or missing.
11. Do not use accessories or replacement parts other than those approved by the manufacturer.

FALL and STRANGULATION HAZARDS: Infants have suffered head injuries

Falling from swings and have strangled in straps

- ALWAYS use restraints. Adjust to fit snugly.
- STOP using product when infant attempts to climb out (approximately 9 months)
- Stay near and watch infant during use. This product is not safe for unsupervised use or unattended sleep.

SUFFOCATION HAZARDS: Young infants have limited head and neck control. If the seat is too upright, infant's head can drop forward and compress the airway. ALWAYS keep swing seat fully reclined until infant is at least 4 months old AND can hold up head without help.

Lock/Unlock

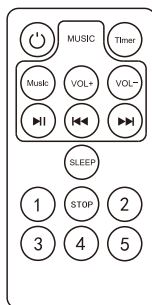
Lock/Unlock:

1. Press down the button will stop swinging.
2. Boost up the button to unlock



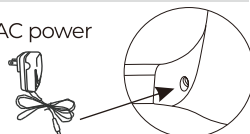
Remote Control

	Power on/off		Play/pause
	Time setting		Previous song
	Built-in music/ Bluetooth music		Next song
	Volume up		Volume down
	1		2
	3		4
	5		6
	Sleep mode: press to enter sleep mode/gear 2 with timer 15 minutes		Stop swing: press to stop swing, and press any gear key to resume swing.



Power Supply

1. DC plug can be inserted into 100-240V ~ 50 / 60Hz AC power supply.
2. Adapter output parameters: voltage is 5V and current is 1A.

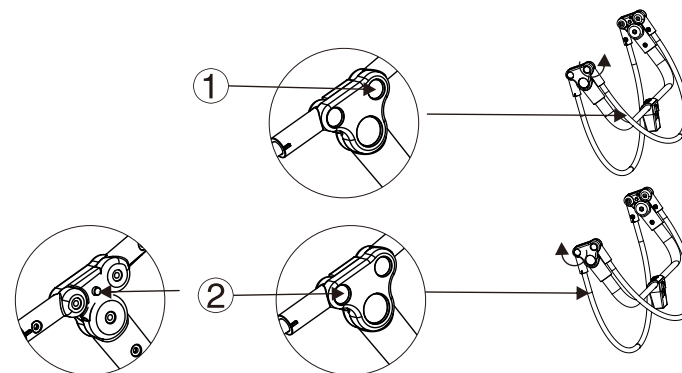


WARNING

- The power terminals must not be short-circuited.
- Do not use adapters other than those supplied with this product to power the product.
- Keep children away from working adapter.
- Check the adapter cable connection regularly.

To unfold the seat frame

1. Press both buttons of left and right side, lift up the upper tube in the meantime
2. Press both buttons of left and right side, lift up the nether tube in the meantime



Adjust the backrest

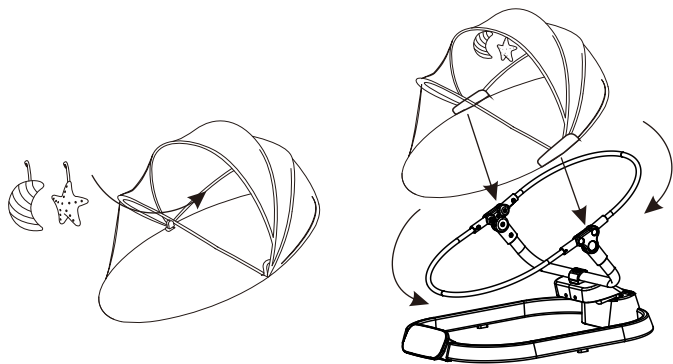
1. Press button ① at the same time on the left and right side to adjust the recline of backrest. There are Level 0 & 1 & 2
2. Press button ② at the same time on the left and right side to adjust horizontal position of the baby swing. There are Level 0 & 1



For Canopy With Toys

Installation: Attach the toys on canopy and fasten the clasps to the pipe of the seat frame, and attach mosquito net to the bottom of the seat frame.

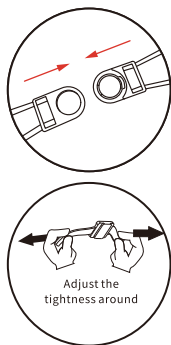
Dismantling: Put out of the clasps to remove the canopy.



Safety Belt Instruction

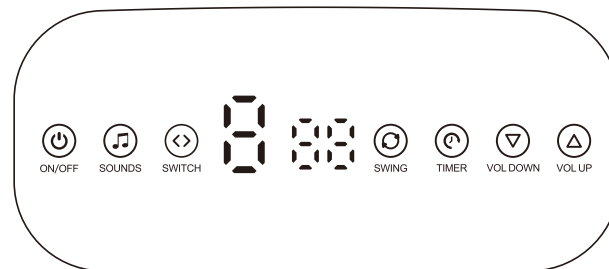
Place the baby into the swing and let his legs across both sides of the crotch support restraint, then turn the crotch support cover up. Adjust the seat belt on both sides and buckle up.

Note: Be sure to use the safety belt correctly when your baby lie on the baby swing for the safety of your child. Buckle off when you take your baby out of swing.



User Instruction

Button Description



- ⏻ Power button: Plug in and the indicator light is on.
Press the button to turn the swing off.
- 🎵 Touch the button to play the built-in music. Touch it again to turn the sound off.
* Turn on the bluetooth on smart phone and connect with "BT_BABY". The swing beeps, and then bluetooth is now connected well. Then the music from phone plays.
* Music priority: Bluetooth>Built-in music
- ⚙️ Touch the button to make swing settings. There are five swing gears indicated by the lights.
- ⌚ Touch the button to set the time. The first touch will have the swing chair swing for 8 minutes, the second touch will have it swing for 15 minutes, and the third will have it swing for 30 minutes.
- ⏮️ Touch the button to play the next song.
- ⬆️ Touch the button to increase the volume gradually.
- ⬇️ Touch the button to decrease the volume gradually.