

# Wi-Fi NVR Kit

## Quick Start Guide

### 1. Notes

- Please read this instruction carefully for correct use of the product and preserve it for reference purposes.
- All the examples and pictures used here are for reference only.
- There may be several technically incorrect places or printing errors in this manual. The updates will be added into the new version of this manual. The contents of this manual are subject to change without notice.
- This device should be operated only from the type of power source indicated on the marking label. The voltage of the power must be verified before using the same.
- The products must be grounded to reduce the risk of electric shock.

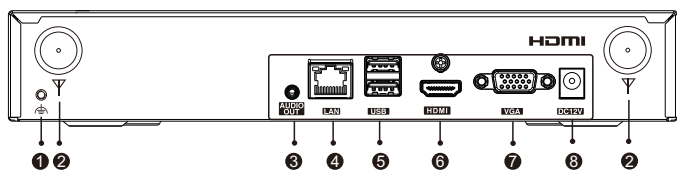
### 2. Packing Check

Please check the device and the accessories after getting the device. If there are any damages, shortages or defects, please contact your dealer immediately.

### 3. Interfaces

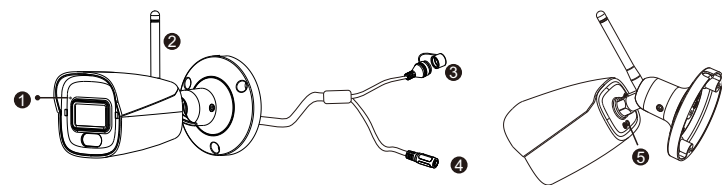
The interfaces of the network video recorder (NVR) and the network camera (IPC) are for reference only.

#### ● Interface Instruction for NVR



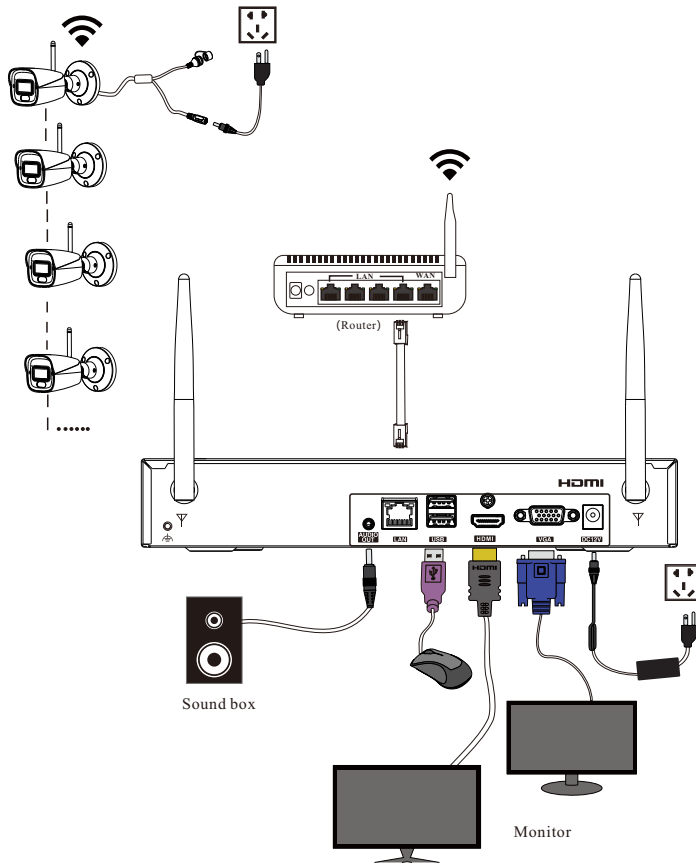
- 1 Grounding
- 2 Antenna interfaces
- 3 Audio output
- 4 Network port
- 5 USB port
- 6 HDMI port
- 7 VGA port
- 8 DC 12V power input

#### ● Interface Instruction for IPC



- 1 Microphone
- 2 Antenna
- 3 Reset: press and hold for 3 s to reset to the factory default settings and then enter the wi-fi match mode.
- 4 Power input: DC12V power supply
- 5 Grounding

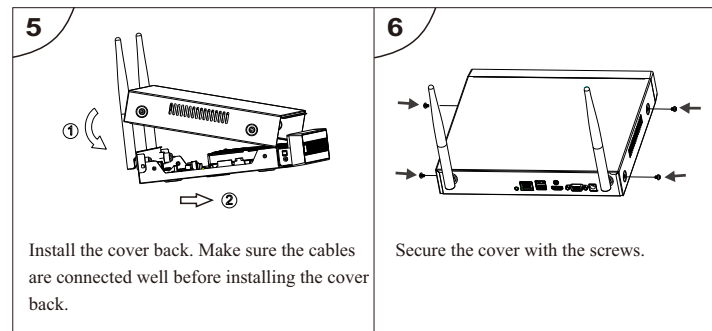
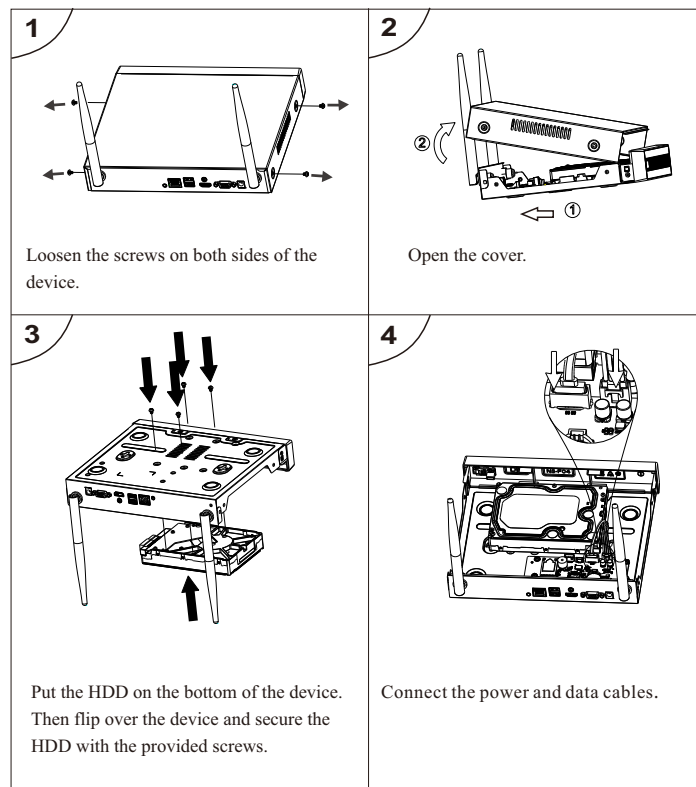
#### ● Device connection



### 4. Installation

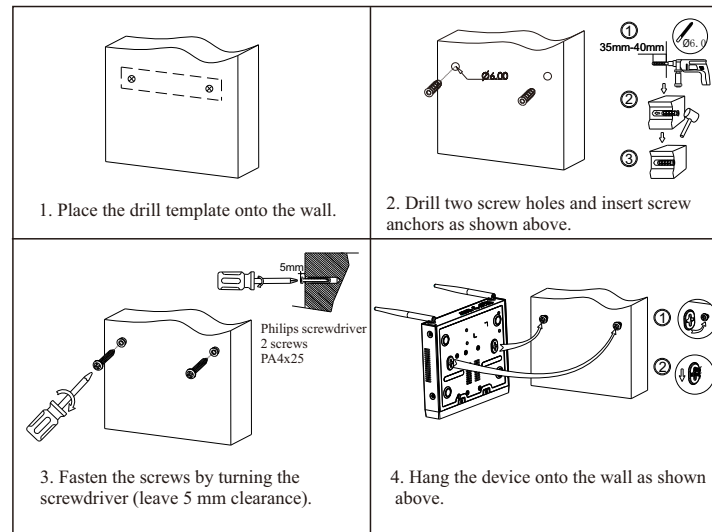
#### ● HDD Installation

This series of the product supports 1 SATA hard drive. Please make sure that the device is powered off before the installation. The pictures of the installation are only for reference.



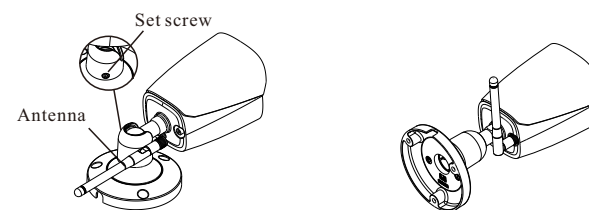
Note: Please format the HDD before using.

#### ● Wall Mounting

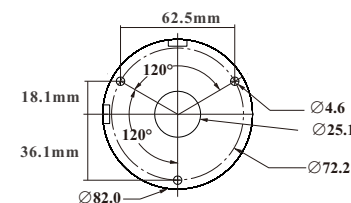


#### ● Camera Installation

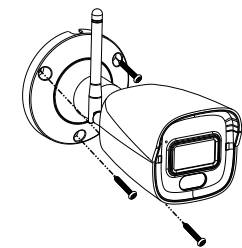
1 Loosen the set screw and then adjust the bracket as shown below. Install the antenna to the camera. After that, adjust the antenna and the bracket of the camera as needed.



2. Attach the drill template to the place where you want to fix the camera and then drill the screw holes and the cable hole on the wall according to the drill template.

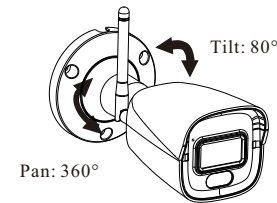


3. Route and connect the power cable and then secure the camera to the wall with screws as shown below.



4. Bracket adjustment. Before adjustment, preview the image of the camera on a monitor.

5. Tighten the set screw after the adjustment.



### 5. Startup & Shutdown

#### ► Startup

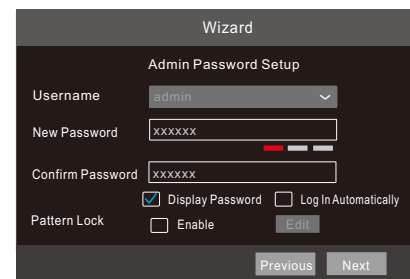
1. Connect the monitor and the power to the NVR.
2. The device will boot. Please wait for a while.
3. Power up the camera.

#### ► Shutdown

Click “Start” and then select “Shutdown” icon. This will bring up a shutdown window. The device will shut down after entering the username and password. Then follow the direction to disconnect the power.

### 6. System Login

You must configure the wizard if you start the NVR for the first time. Choose the language and read the privacy statement. Then set the data, time and zone as needed. After that, set the login password.



The default username is **admin**. Set your own password when you use the wizard for the first time. Enable pattern lock and click “Edit” to set the pattern lock. Then set security questions and answers. It is important for you to remember these answers, or you will not be able to reset your password. Click “Next” to continue.

### 7. Network Configuration

You can configure the network in the wizard or click → Settings → Network → TCP/IP to set the network.

1. Enter IP address, subnet mask, gateway, etc. If using DHCP, please enable DHCP in both the NVR and the router. In addition, the Wi-Fi of the NVR which is used to connect the Wi-Fi cameras is enabled by default.

2. Enter HTTP/HTTPS port and server port as needed.

Wizard

Network Settings >

Ethernet Port 1 ( Online )

☐ Obtain an IP address automatically

Address

192.168.1.2

Subnet Mask

255.255.255.0

Gateway

192.168.1.1

☒ Obtain DNS automatically

Preferred DNS

Alternate DNS

Wi-Fi ( Online )

Address

10.101.101.10

Subnet Mask

255.255.255.0

Port

HTTP Port

80

HTTPS Port

443

Server Port

8036


Previous

Next

Cancel

After that, you can add the wired camera in the LAN as needed.

## 8. Record Settings

You can set the record mode in the wizard or click  → Settings → Record → Mode Settings to set. “Auto” or “Customization” mode can be set as needed.

Auto Mode: Select one auto mode in the interface as shown below and then click “Next” to save the settings. Click “Advanced” to self-define a record mode.

Customization Mode: Set the “Sensor Record”, “Motion Record”, “AI Record”, “POS Record” and “Schedule Record” of each camera. Please enable the record as needed. Click “Next” to continue.

Wizard

Network Settings > Add Camera > Disk Settings > Record Settings >

Mode

Auto

☐ Motion Record

☐ Sensor Record

☐ Motion Record+Sensor Record

☐ Always(24x7)Record+Motion Record

☐ Always(24x7)Record+Sensor Record

☐ Always(24x7)Record+Motion Record+Sensor Record

☐ Always(24x7)Record+Motion Record+Sensor Record+AI Record

Advanced

Previous

Next

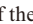
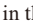
Cancel

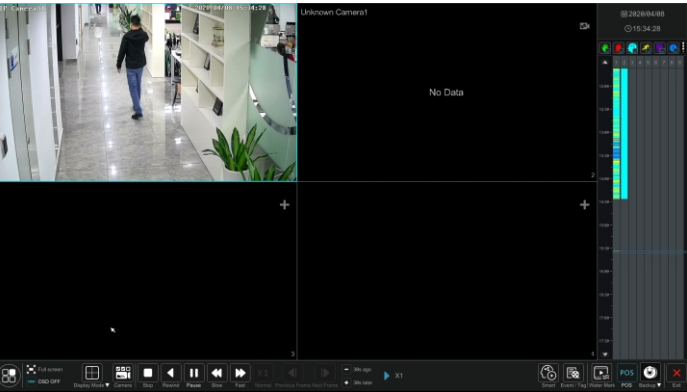
## 9. Playback

### ► Instant playback

Click “Instant Playback” in the right-click menu of the camera’s preview window to select or drag the playback progress bar to change the playback time to play back the record.

### ► General playback

Click  on the tool bar at the bottom of the live view interface or click Start → Playback to go to the playback interface as shown below. You can also add the playback cameras manually. Click  in the playback window to pop up the “Add Camera” window. Check the cameras in the window and then click “Add” to add playback camera. The record files of the added playback camera will be played in the playback interface.



## 10. NAT

You can enable the NAT function in the interface or set it in the network configuration after exiting the wizard. You can scan the QR code through the mobile surveillance APP available for iOS or Android to easily view your cameras. Please see the user manual of NVR for more details.

### ► Web Browser Access Through NAT Function

① Go to Start → Settings → Network → NAT tab. Enable NAT and select the NAT Server Address. Click “Apply” to save the parameters.

NAT

☒ Enable

Access Type

NAT2.0(2020.autonat.cn:7968)

Visit Address

www.autonat.cn

NAT Status

Success

Apply



Enter the visit address in the address bar of your browser and then press enter to go to the following interface. If you are the first time to access the NAT, you shall download and install the plug-in according to the popup tips. After that, re-open your web browser and enter the above-mentioned address. Then the login box will appear. Enter the device serial number, username and password.

Enter device serial number

Enter Username

Enter Password

Login

**Device Serial Number:** Click  on the menu bar at the bottom of the live interface and then click  next to the admin icon to view the serial number.  
**Username:** The username of the NVR. The default username is admin.  
**Password:** The password of the NVR. The password is set by yourself when you configure the wizard for the first time.

## 11. Add Wi-Fi Cameras

The wireless cameras and the NVR has been paired before delivery, so there is no need to pair. After you power on the NVR and the cameras, the images can be viewed in the live page of the NVR automatically. If you want to add a wireless camera again, you can click “Camera” in the settings panel to go to the camera management interface and delete the camera first and then add it according to the following steps.

- In the live interface, click “+” on the right top of the window. Select “Wi-Fi Match”.
- After powering on the camera, press and hold the Reset button for 3 seconds to go to the pairing mode.
- After the camera is matched, the NVR will output the image.

Note: If the camera is in pairing mode for more than 2 minutes and not matched, you need to press and hold the Reset button again to re-match.

Add Camera

Quickly Add

Wi-Fi Match

Add Manually

Add Recorder

Auto Report

Wi-Fi Added List

Searching camera...Remaining: 51.

No.	Address	MAC Address
1	10.101.101.101	14:01:6E:3B:89:1F

Remain Bandwidth: 29/32Mb

Camera Default Password

Add

Cancel

## 11. Expand the Wi-Fi Coverage

In some complex scenes, the signal is weakened after passing through the obstacles. Properly placing the antenna, or repeater settings can expand the signal transmission distance.


Note:

- The wireless repeater function cannot strength the signal of the wireless kit, but it can extend the wireless transmission distance.
- Properly placing the cameras can enhance the wireless transmission distance.
- Repeater settings need smooth wireless connection. In order to ensure the successful settings, it is recommended to determine the repeater scheme according to the actual usage scene. Place the camera near the NVR and set the repeater function before installing the camera.

### ● Adjust the antenna to improve signal transmission

- The antennas of the NVR and cameras should be placed in a high and open area, not next to the obstacles, such as walls, metal and glass, which will affect the signal divergence.
- The camera’s antenna should be placed parallel to the NVR’s antenna to get the maximum signal coverage as shown below.

### ● Use the repeater function to expand the wi-fi coverage

Manual repeater and auto repeater are supported. Click  → Settings → Camera → Repeater to go to the following interface. In this interface, you can view the topology diagram and set the repeater.

### ► Manual Repeater

Repeater Type

Manual Repeater

NVR

IPC CH 1 +

IPC CH 2 +

IPC CH 4

IPC CH 5 +

IPC CH 7

IPC CH 8

IPC CH 3 +

IPC CH 6 +

LAN

WLAN

Online

Offline

Apply

Please set the repeater according to the camera installation location. Click “+” to add the camera you want to link. After that, click “Apply” to save the settings.

### ► Auto Repeater

In the above interface, select “Auto Repeater” and click “Apply” to enable the auto repeater function. After the function is enabled, the system will automatically look for the nearby cameras and select the optimal path to relay when a camera’s signal is not good. After that, click “Camera topology” to view the repeater details.

### ● Example

When Camera1 needs to be placed out of the NVR’s coverage and there is a Camera 2 in the middle which gets a good signal, you can place Camera 1 next to the NVR and power it up and link Camera 1 to Camera2 in the Repeater page. After you have set the repeater successfully, install Camera1 to the desired location.

FCC Warning:

This equipment has been tested and found to comply with the limits for a Class B digital device, pursuant to part 15 of the FCC Rules. These limits are designed to provide reasonable protection against harmful interference in a residential installation. This equipment generates, uses and can radiate radio frequency energy and, if not installed and used in accordance with the instructions, may cause harmful interference to radio communications. However, there is no guarantee that interference will not occur in a particular installation. If this equipment does cause harmful interference to radio or television reception, which can be determined by turning the equipment off and on, the user is encouraged to try to correct the interference by one or more of the following measures:

- Reorient or relocate the receiving antenna.
- Increase the separation between the equipment and receiver.
- Connect the equipment into an outlet on a circuit different from that to which the receiver is connected.
- Consult the dealer or an experienced radio/TV technician for help.

Caution: Any changes or modifications to this device not explicitly approved by manufacturer could void your authority to operate this equipment.

This device complies with part 15 of the FCC Rules. Operation is subject to the following two conditions:

(1) This device may not cause harmful interference, and (2) this device must accept any interference received, including interference that may cause undesired operation.

This equipment complies with FCC radiation exposure limits set forth for an uncontrolled environment. This equipment should be installed and operated with minimum distance 20cm between the radiator and your body.