



## About the Guide

- This quick start guide is for reference only. Minor difference might be found in user interface.
- All the design and software here are subject to change without prior written notice.
- All trademarks and registered trademarks mentioned are the properties of their respective owners.
- Please visit our website or contact your local service engineer for more information.
- If there is any uncertainty or controversy, please refer to our final explanation.

## Support

- Support Email: support@ucfer.com
- FAQ: Scan the QR code below



## Operating With Ucfer App

### Step 1

Scan the following QR code or search “Ucfer” in Google Play or App Store to download and install Ucfer App.

### Step 2

Run Ucfer App, and then register an account for first use.

### Step 3

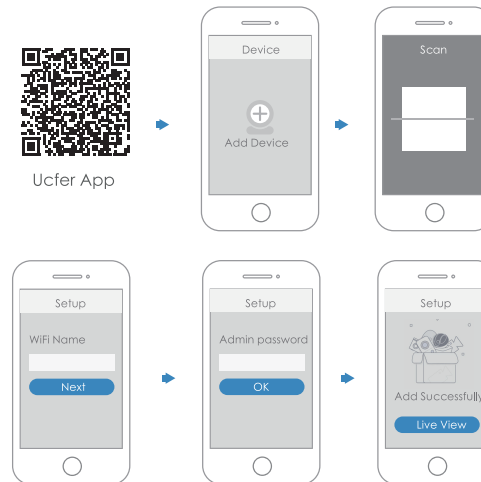
Connect the camera to power source with the power adapter.

### Step 4

Wait for booting to be finished, and then the camera indicator flashes with green light.

### Step 5

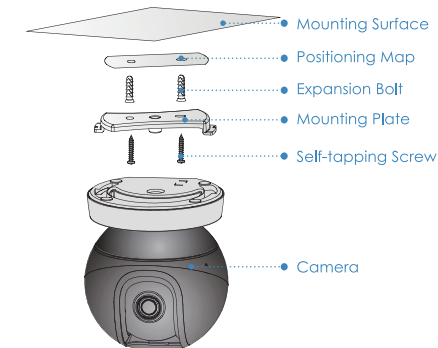
Connect your smart phone to your Wi-Fi network, and make sure your smartphone is connected to Wi-Fi network with 2.4 GHz band, and then do the following operations to finish adding camera.



- Note:**
- If you have more than one camera, do step 5 to add them one by one.
  - If the Wi-Fi network changed or the indicator status goes wrong, reset the camera, and then do step 5 to add it again.

## Installing Camera

**Note:** Make sure the mounting surface is strong enough to hold at least three times of the device weight.



- Step1** Drill screw holes on the mounting surface as the mounting plate shows, and then put in the expansion bolts.
- Step2** Attach the mounting plate to the mounting surface with the self-tapping screws.
- Step3** Attach the camera to the mounting plate, then power it up, and then, adjust the lens to the ideal angle.

# Ucfer

Your safer home

Version 1.0

## Packing List



Camera ×1



Power Cable ×1



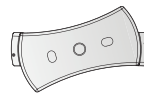
Power Adapter ×1



QSG ×1



Screw Package ×1



Mounting Plate ×1



Positioning Map ×1

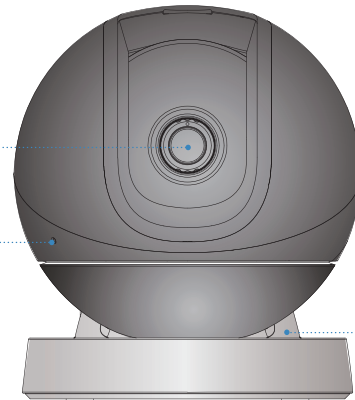
## Camera Introduction



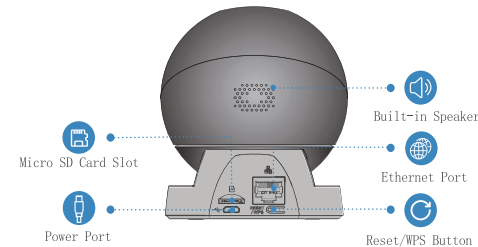
Lens



Built-in Mic



LED Indicator



**Note:** Press the Reset/WPS button to enable WPS.  
Press and hold the Reset/WPS button for 10 s to reset the camera.

The pattern of the LED indicator is included in the following table.

LED Indicator Status	Device Status
Off	<ul style="list-style-type: none"><li>● Powered off/LED turned off</li><li>● Rebooting after reset</li></ul>
Red light on	<ul style="list-style-type: none"><li>● Booting</li><li>● Device malfunction</li></ul>
Green light flashing	Waiting for network
Green light on	Operating properly
Red light flashing	Network connection failed
Green and Red light flashing alternately	Firmware updating