



## Shenzhen Huaxia Testing Technology Co., Ltd

1F., Block A of Tongsheng Technology Building, Huahui Road, Dalang Street, Longhua District, Shenzhen, China

Telephone: +86-755-26648640

Fax: +86-755-26648637

Website: [www.cqa-cert.com](http://www.cqa-cert.com)

Report Template Version: V03

Report Template Revision Date: Mar.1st, 2017

# Test Report

**Report No.:** CQASZ20190600420E-01

**Applicant:** QITIAN TAIYI (SHENZHEN) TECHNOLOGY CO.,LTD

**Address of Applicant:** RM509, BLD C, Shiwaitaoyuan Park, Pinshan Road 1, Nanshan Dirstrect, Shenzhen, China

**Manufacturer:** QITIAN TAIYI (SHENZHEN) TECHNOLOGY CO.,LTD

**Address of Manufacturer:** RM509, BLD C, Shiwaitaoyuan Park, Pinshan Road 1, Nanshan Dirstrect, Shenzhen, China

**Factory:** QITIAN TAIYI (SHENZHEN) TECHNOLOGY CO.,LTD

**Address of Factory:** RM509, BLD C, Shiwaitaoyuan Park, Pinshan Road 1, Nanshan Dirstrect, Shenzhen, China

**Equipment Under Test (EUT):**

**Product:** Wireless charger

**Model No.:** YT190428A

**Brand Name:** Chargeupp

**FCC ID:** 2ATOD-YT190428A

**Standards:** 47 CFR Part 15, Subpart C

**Date of Test:** 2019-06-04 to 2019-06-11

**Date of Issue:** 2019-06-11

**Test Result :** PASS\*

**Tested By:**

*Daisy Qin*

(Daisy Qin)

**Reviewed By:**

*Aaron Ma*

(Aaron Ma)

**Approved By:**

*Jack Ai*

( Jack Ai)



\* In the configuration tested, the EUT complied with the standards specified above.

The test report is effective only with both signature and specialized stamp, The result(s) shown in this report refer only to the sample(s) tested. Without written approval of CQA, this report can't be reproduced except in full.

## 1 Version

### Revision History Of Report

Report No.	Version	Description	Issue Date
CQASZ20190600420E-01	Rev.01	Initial report	2019-06-11

## 2 Test Summary

Test Item	Test Requirement	Test method	Result
Antenna Requirement	47 CFR Part 15, Subpart C Section 15.203	ANSI C63.10 2013	PASS
AC Power Line Conducted Emission	47 CFR Part 15, Subpart C Section 15.207	ANSI C63.10 2013	PASS
20dB Occupied Bandwidth	47 CFR Part 15, Subpart C Section 15.215	ANSI C63.10 2013	PASS
Radiated Emission , Radiated Spurious Emissions	47 CFR Part 15, Subpart C Section 15.209	ANSI C63.10 2013	PASS

### 3 Contents

	Page
<b>1 VERSION .....</b>	<b>2</b>
<b>2 TEST SUMMARY .....</b>	<b>3</b>
<b>3 CONTENTS .....</b>	<b>4</b>
<b>4 GENERAL INFORMATION .....</b>	<b>5</b>
4.1 CLIENT INFORMATION.....	5
4.2 GENERAL DESCRIPTION OF EUT .....	5
4.3 TEST ENVIRONMENT .....	6
4.4 DESCRIPTION OF SUPPORT UNITS .....	6
4.5 STATEMENT OF THE MEASUREMENT UNCERTAINTY .....	7
4.6 TEST LOCATION.....	7
4.7 TEST FACILITY.....	7
4.8 DEVIATION FROM STANDARDS .....	7
4.9 OTHER INFORMATION REQUESTED BY THE CUSTOMER .....	7
4.10 EQUIPMENT LIST.....	8
<b>5 TEST RESULTS AND MEASUREMENT DATA.....</b>	<b>9</b>
5.1 ANTENNA REQUIREMENT.....	9
5.2 CONDUCTED EMISSIONS .....	10
5.3 20dB OCCUPY BANDWIDTH .....	13
5.4 RADIATED SPURIOUS EMISSION & RESTRICTED BANDS.....	15
5.4.1 <i>Spurious Emissions</i> .....	15
<b>6 PHOTOGRAPHS - EUT TEST SETUP .....</b>	<b>20</b>
6.1 RADIATED EMISSION .....	20
6.2 CONDUCTED EMISSION .....	21
<b>7 PHOTOGRAPHS - EUT CONSTRUCTIONAL DETAILS.....</b>	<b>22</b>

## 4 General Information

### 4.1 Client Information

Applicant:	QITIAN TAIYI (SHENZHEN) TECHNOLOGY CO.,LTD
Address of Applicant:	RM509, BLD C, Shiwaitaoyuan Park, Pinshan Road 1, Nanshan District, Shenzhen, China
Manufacturer:	QITIAN TAIYI (SHENZHEN) TECHNOLOGY CO.,LTD
Address of Manufacturer:	RM509, BLD C, Shiwaitaoyuan Park, Pinshan Road 1, Nanshan District, Shenzhen, China
Factory:	QITIAN TAIYI (SHENZHEN) TECHNOLOGY CO.,LTD
Address of Factory:	RM509, BLD C, Shiwaitaoyuan Park, Pinshan Road 1, Nanshan District, Shenzhen, China

### 4.2 General Description of EUT

Product Name:	Wireless charger
Model No.:	YT190428A
Brand Name:	Chargeupp
Hardware Version:	GRIP201901
Software Version:	C85U-V1.2.9
Equipment Category	Non-ISM frequency
Operation Frequency range	110-205KHz
Modulation Type:	Induction
Antenna Type:	Induction coil
Antenna Gain:	0dBi
EUT Power Supply:	DC 5V/DC 9V

Note:

1. In section 15.31(m), regards to the operating frequency range less 1 MHz.
2. Only one model number: YT190428A, but it comes in two colors (white, black)

### 4.3 Test Environment

Operating Environment:	
Temperature:	25.0 °C
Humidity:	53 % RH
Atmospheric Pressure:	1010mbar
Test Mode:	
Mode a:	Wireless charging Mode at 9V (Full load)
Mode b:	Wireless charging Mode at 9V (half load)
Mode c:	Wireless charging Mode at 9V (Null load)
Mode d:	Wireless charging Mode at 5V (Full load)
Mode e:	Wireless charging Mode at 5V (half load)
Mode f:	Wireless charging Mode at 5V (Null load)
Note: The mode a was the worst case and only the data of the worst case record in this report.	

### 4.4 Description of Support Units

The EUT has been tested with associated equipment below.

Description	Manufacturer	Model No.	Remark	FCC certification
Adaptor	Samsung	EP-TA50CBC	Provide by client	Verification
Adaptor	HUAWEI	HW-050450C00	Provide by client	Verification
Wireless electronic Load	-	-	Provide by client	-

## 4.5 Statement of the measurement uncertainty

The data and results referenced in this document are true and accurate.

The reader is cautioned that there may be errors within the calibration limits of the equipment and facilities.

The measurement uncertainty was calculated for all measurements listed in this test report acc. to CISPR 16 - 4 „Specification for radio disturbance and immunity measuring apparatus and methods – Part 4: Uncertainty in EMC Measurements“ and is documented in the **Shenzhen Huaxia Testing Technology Co., Ltd.** quality system acc. to DIN EN ISO/IEC 17025.

Furthermore, component and process variability of devices similar to that tested may result in additional deviation. The manufacturer has the sole responsibility of continued compliance of the device.

Hereafter the best measurement capability for CQA laboratory is reported:

No.	Item	Uncertainty	Notes
1	Radiated Emission (Below 1GHz)	±5.12dB	(1)
2	Radiated Emission (Above 1GHz)	±4.60dB	(1)
3	Occupied Bandwidth	1.1%	(1)
4	Temperature test	0.8℃	(1)
5	Humidity test	2.0%	(1)

(1) This uncertainty represents an expanded uncertainty expressed at approximately the 95% confidence level using a coverage factor of k=2.

## 4.6 Test Location

**Shenzhen Huaxia Testing Technology Co., Ltd,**

1F., Block A of Tongsheng Technology Building, Huahui Road, Dalang Street, Longhua District, Shenzhen, China

## 4.7 Test Facility

• **A2LA (Certificate No. 4742.01)**

Shenzhen Huaxia Testing Technology Co., Ltd., Shenzhen EMC Laboratory is accredited by the American Association for Laboratory Accreditation(A2LA). Certificate No. 4742.01.

• **FCC Registration No.: 522263**

Shenzhen Huaxia Testing Technology Co., Ltd., Shenzhen EMC Laboratory has been registered and fully described in a report filed with the (FCC) Federal Communications Commission. The acceptance letter from the FCC is maintained in our files. Registration No.:522263

## 4.8 Deviation from Standards

None.

## 4.9 Other Information Requested by the Customer

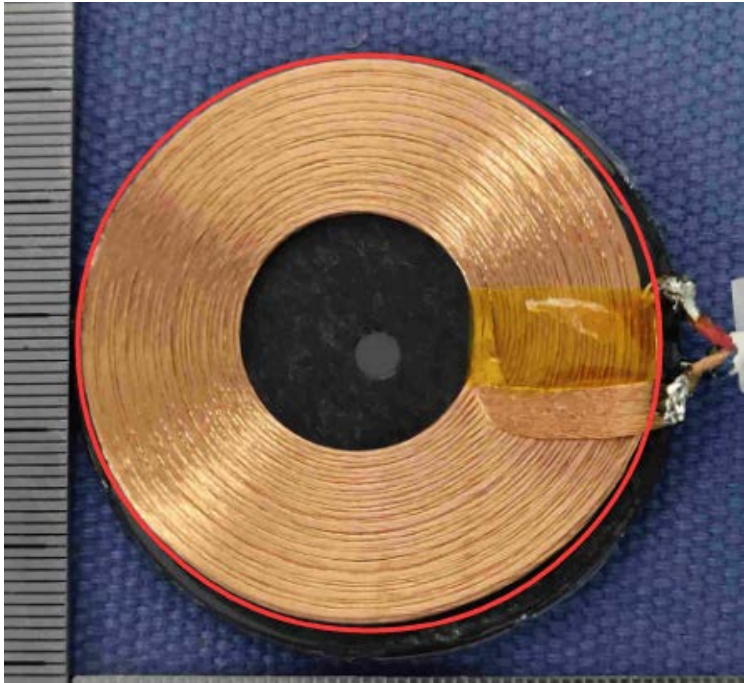
None.

#### 4.10 Equipment List

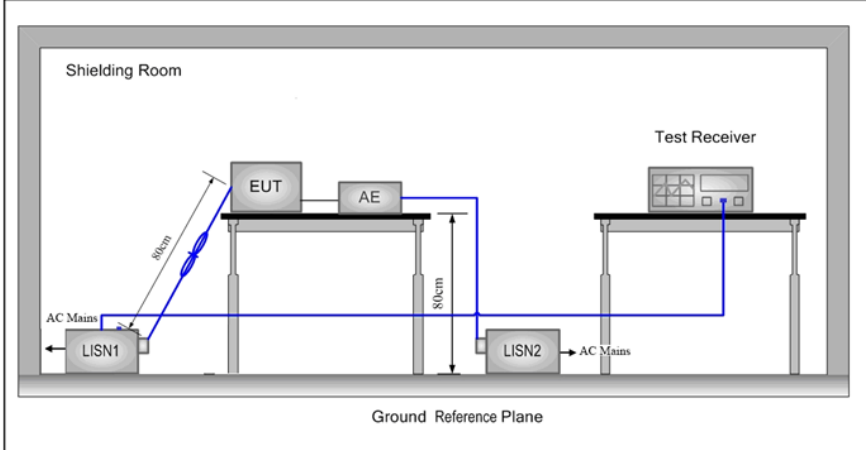
Test Equipment	Manufacturer	Model No.	Instrument No.	Calibration Date	Calibration Due Date
EMI Test Receiver	R&S	ESR7	CQA-005	2018/9/26	2019/9/25
Preamplifier	MITEQ	AFS4-00010300-18-10P-4	CQA-035	2018/9/26	2019/9/25
Loop antenna	Schwarzbeck	FMZB1516	CQA-087	2018/10/28	2020/10/27
Bilog Antenna	R&S	HL562	CQA-011	2018/9/26	2020/9/25
Coaxial Cable (Above 1GHz)	CQA	N/A	C019	2018/9/26	2019/9/25
Coaxial Cable (Below 1GHz)	CQA	N/A	C020	2018/9/26	2019/9/25
EMI Test Receiver	R&S	ESPI3	CQA-013	2018/9/26	2019/9/25
LISN	R&S	ENV216	CQA-003	2018/11/5	2019/11/4
Coaxial cable	CQA	N/A	CQA-C009	2018/9/26	2019/9/25

## 5 Test results and Measurement Data

### 5.1 Antenna Requirement

<b>Standard requirement:</b>	47 CFR Part 15C Section 15.203
<p>15.203 requirement:  An intentional radiator shall be designed to ensure that no antenna other than that furnished by the responsible party shall be used with the device. The use of a permanently attached antenna or of an antenna that uses a unique coupling to the intentional radiator, the manufacturer may design the unit so that a broken antenna can be replaced by the user, but the use of a standard antenna jack or electrical connector is prohibited.</p> <p>15.247(b) (4) requirement:  The conducted output power limit specified in paragraph (b) of this section is based on the use of antennas with directional gains that do not exceed 6 dBi. Except as shown in paragraph (c) of this section, if transmitting antennas of directional gain greater than 6 dBi are used, the conducted output power from the intentional radiator shall be reduced below the stated values in paragraphs (b)(1), (b)(2), and (b)(3) of this section, as appropriate, by the amount in dB that the directional gain of the antenna exceeds 6 dBi.</p>	
<b>EUT Antenna:</b>	
The antenna is Induction coil. The best case gain of the antenna is 0dBi.	

## 5.2 Conducted Emissions

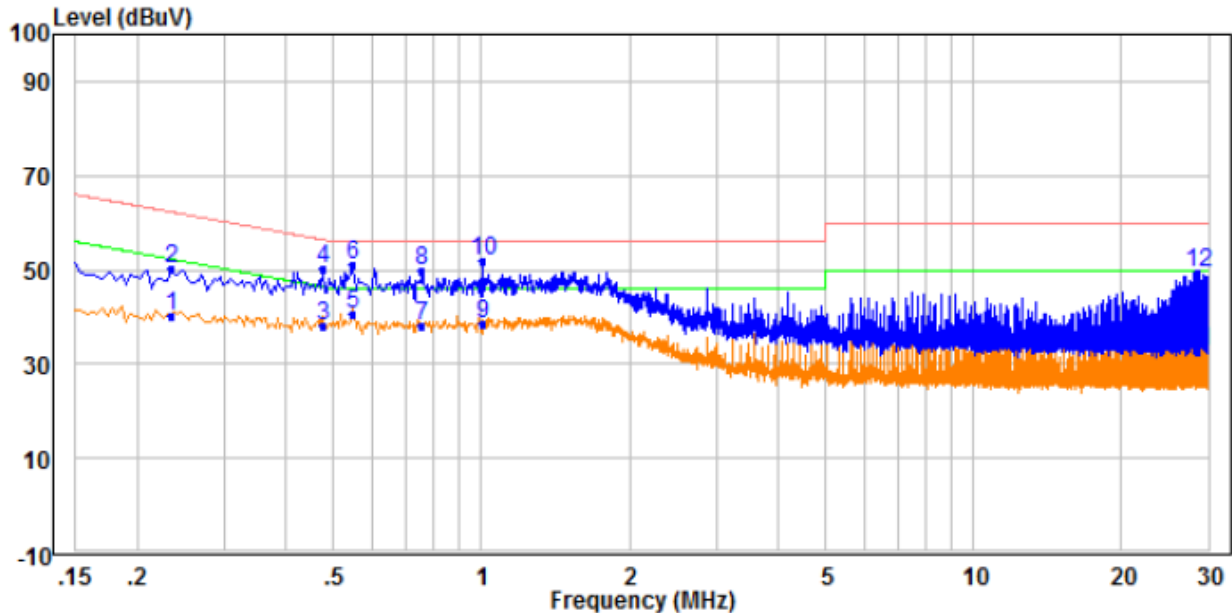
Test Requirement:	47 CFR Part 15C Section 15.207		
Test Method:	ANSI C63.10: 2013		
Test Frequency Range:	150kHz to 30MHz		
Limit:	Frequency range (MHz)	Limit (dBuV)	
		Quasi-peak	Average
	0.15-0.5	66 to 56*	56 to 46*
	0.5-5	56	46
	5-30	60	50
* Decreases with the logarithm of the frequency.			
Test Procedure:	<ol style="list-style-type: none"> <li>1) The mains terminal disturbance voltage test was conducted in a shielded room.</li> <li>2) The EUT was connected to AC power source through a LISN 1 (Line Impedance Stabilization Network) which provides a <math>50\Omega/50\mu\text{H} + 5\Omega</math> linear impedance. The power cables of all other units of the EUT were connected to a second LISN 2, which was bonded to the ground reference plane in the same way as the LISN 1 for the unit being measured. A multiple socket outlet strip was used to connect multiple power cables to a single LISN provided the rating of the LISN was not exceeded.</li> <li>3) The tabletop EUT was placed upon a non-metallic table 0.8m above the ground reference plane. And for floor-standing arrangement, the EUT was placed on the horizontal ground reference plane.</li> <li>4) The test was performed with a vertical ground reference plane. The rear of the EUT shall be 0.4 m from the vertical ground reference plane. The vertical ground reference plane was bonded to the horizontal ground reference plane. The LISN 1 was placed 0.8 m from the boundary of the unit under test and bonded to a ground reference plane for LISNs mounted on top of the ground reference plane. This distance was between the closest points of the LISN 1 and the EUT. All other units of the EUT and associated equipment was at least 0.8 m from the LISN 2.</li> <li>5) In order to find the maximum emission, the relative positions of equipment and all of the interface cables must be changed according to ANSI C63.10: 2013 on conducted measurement.</li> </ol>		
Test Setup:			
Test Results:	Pass		

## Measurement Data

the worst case

Mode a:

Live line:



	Freq	Read Level	Factor	Level	Limit Line	Over Limit	Remark
	MHz	dBuV	dB	dBuV	dBuV	dB	
1	0.234	30.87	9.49	40.36	52.31	-11.95	Average
2	0.234	40.82	9.49	50.31	62.31	-12.00	Peak
3	0.478	28.47	9.52	37.99	46.37	-8.38	Average
4	0.478	40.81	9.52	50.33	56.37	-6.04	Peak
5 AV	0.546	30.94	9.61	40.55	46.00	-5.45	Average
6	0.546	41.32	9.61	50.93	56.00	-5.07	Peak
7	0.758	28.27	9.80	38.07	46.00	-7.93	Average
8	0.758	40.02	9.80	49.82	56.00	-6.18	Peak
9	1.006	29.09	9.53	38.62	46.00	-7.38	Average
10 PP	1.006	42.17	9.53	51.70	56.00	-4.30	Peak
11	28.588	22.52	10.18	32.70	50.00	-17.30	Average
12	28.588	39.41	10.18	49.59	60.00	-10.41	Peak

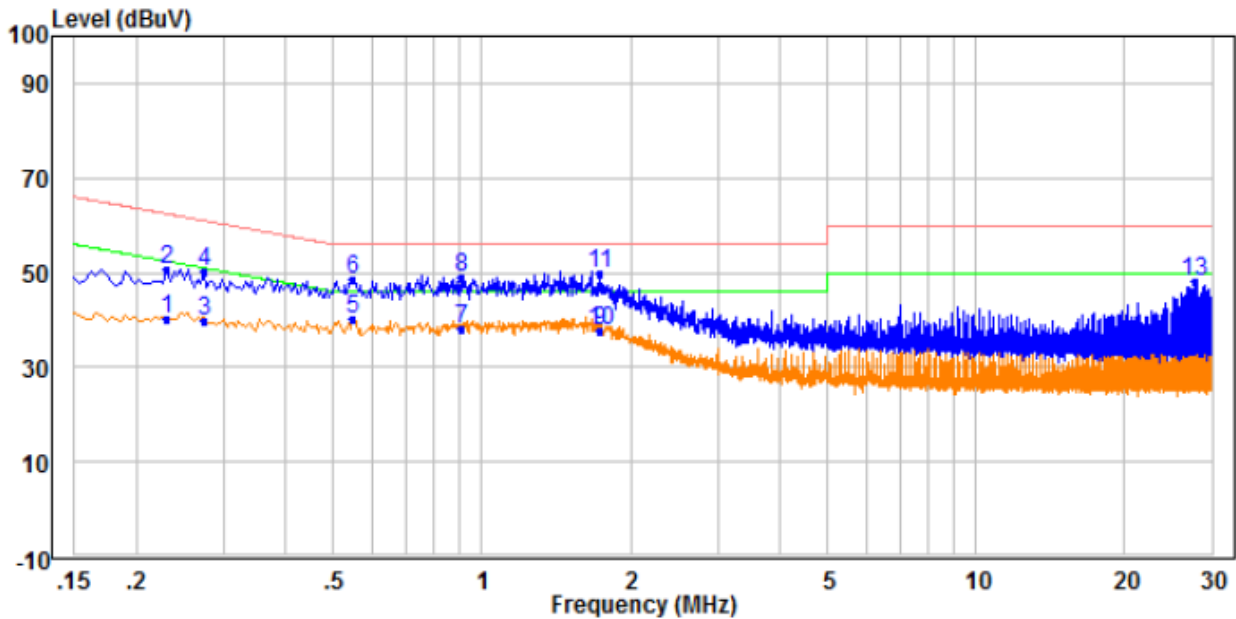
Remark:

1. The following Quasi-Peak and Average measurements were performed on the EUT:
2. Final Test Level = Receiver Reading + LISN Factor + Cable Loss.
3. If the Peak value under Average limit, the Average value is not recorded in the report.

the worst case

Mode a:

Neutral line:

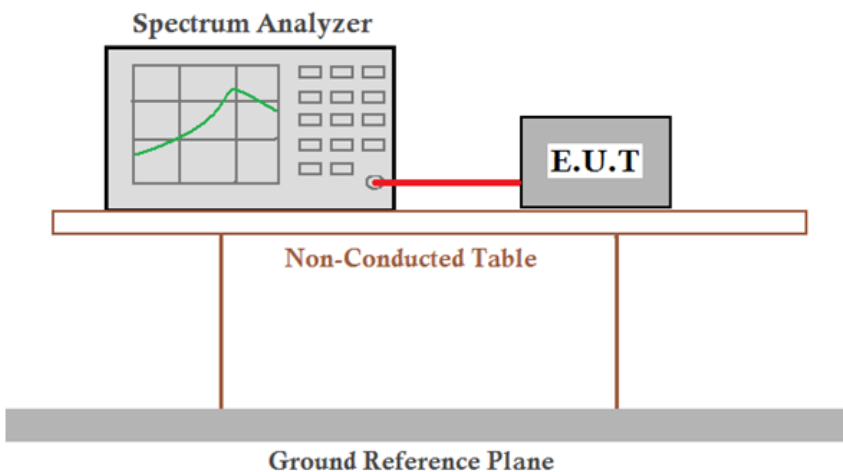


		Read		Limit	Over	
	Freq	Level	Factor	Level	Line	Limit Remark
	MHz	dBuV	dB	dBuV	dBuV	dB
1	0.230	30.84	9.48	40.32	52.45	-12.13 Average
2	0.230	41.30	9.48	50.78	62.45	-11.67 Peak
3	0.274	30.41	9.48	39.89	51.00	-11.11 Average
4	0.274	40.79	9.48	50.27	61.00	-10.73 Peak
5 PP	0.546	30.67	9.65	40.32	46.00	-5.68 Average
6	0.546	38.83	9.65	48.48	56.00	-7.52 Peak
7	0.906	28.48	9.76	38.24	46.00	-7.76 Average
8	0.906	39.38	9.76	49.14	56.00	-6.86 Peak
9	1.734	27.85	9.72	37.57	46.00	-8.43 Average
10	1.734	27.85	9.72	37.57	46.00	-8.43 Average
11 PK	1.734	40.28	9.72	50.00	56.00	-6.00 Peak
12	27.628	29.35	10.12	39.47	50.00	-10.53 Average
13	27.628	37.94	10.12	48.06	60.00	-11.94 Peak

Remark:

1. The following Quasi-Peak and Average measurements were performed on the EUT:
2. Final Test Level =Receiver Reading + LISN Factor + Cable Loss.
3. If the Peak value under Average limit, the Average value is not recorded in the report.

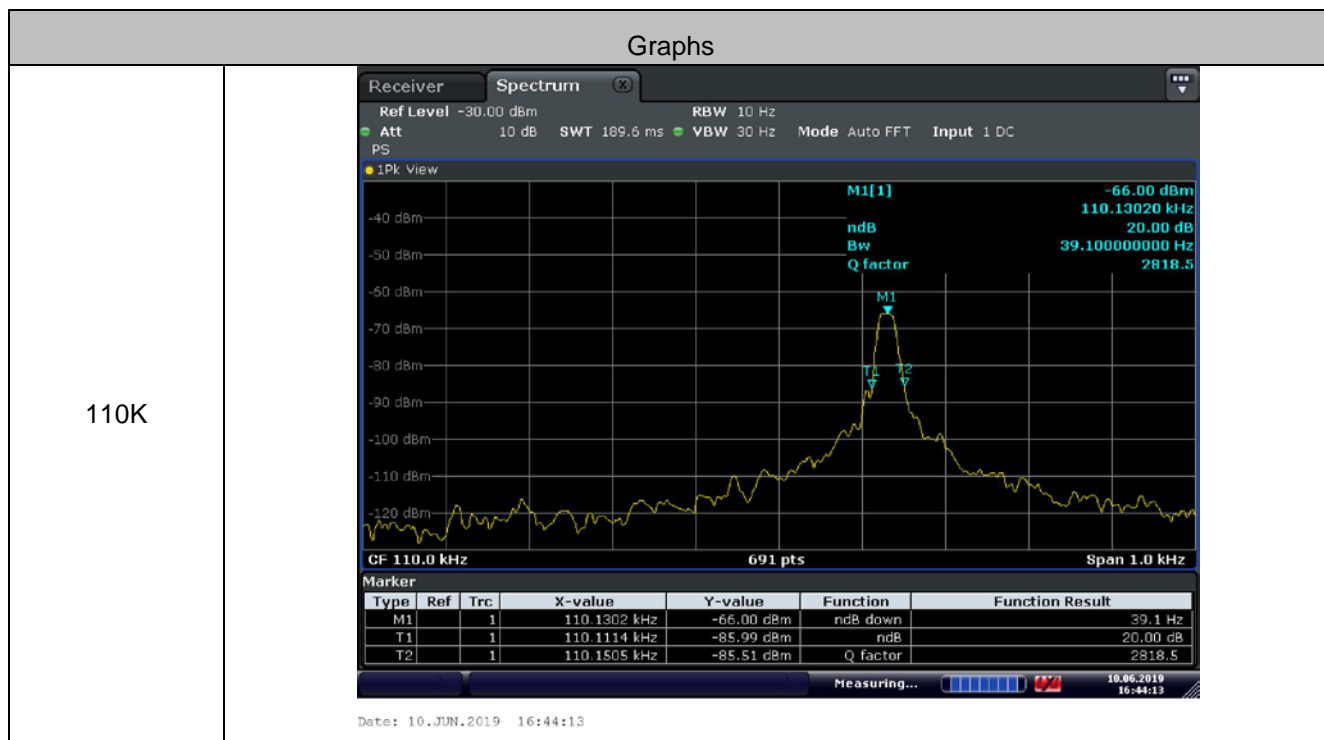
### 5.3 20dB Occupy Bandwidth

Test Requirement:	47 CFR Part 15C Section 15.215
Test Method:	ANSI C63.10 2013
Test Setup:	 <p>Remark: Offset=Cable loss+ attenuation factor.</p>
Test Results:	Pass

#### Measurement Data

Mode a		
Test Frequency (KHz)	20dB Occupy Bandwidth (kHz)	Result
110	0.039	Pass

Test plot as follows:



## 5.4 Radiated Spurious Emission & Restricted bands

### 5.4.1 Spurious Emissions

Test Requirement:	47 CFR Part 15C Section 15.209 and 15.205				
Test Method:	ANSI C63.10 2013				
Test Site:	Measurement Distance: 3m (Semi-Anechoic Chamber)				
Receiver Setup:	Frequency	Detector	RBW	VBW	Remark
	0.009MHz-0.090MHz	Peak	10kHz	30kHz	Peak
	0.009MHz-0.090MHz	Average	10kHz	30kHz	Average
	0.090MHz-0.110MHz	Quasi-peak	10kHz	30kHz	Quasi-peak
	0.110MHz-0.490MHz	Peak	10kHz	30kHz	Peak
	0.110MHz-0.490MHz	Average	10kHz	30kHz	Average
	0.490MHz -30MHz	Quasi-peak	10kHz	30kHz	Quasi-peak
	30MHz-1GHz	Quasi-peak	100 kHz	300kHz	Quasi-peak
	Above 1GHz	Peak	1MHz	3MHz	Peak
		Peak	1MHz	10Hz	Average
Limit:	Frequency	Field strength (microvolt/meter)	Limit (dBuV/m)	Remark	Measurement distance (m)
	0.009MHz-0.490MHz	2400/F(kHz)	-	-	300
	0.490MHz-1.705MHz	24000/F(kHz)	-	-	30
	1.705MHz-30MHz	30	-	-	30
	30MHz-88MHz	100	40.0	Quasi-peak	3
	88MHz-216MHz	150	43.5	Quasi-peak	3
	216MHz-960MHz	200	46.0	Quasi-peak	3
	960MHz-1GHz	500	54.0	Quasi-peak	3
	Above 1GHz	500	54.0	Average	3
	Note: 15.35(b), Unless otherwise specified, the limit on peak radio frequency emissions is 20dB above the maximum permitted average emission limit applicable to the equipment under test. This peak limit applies to the total peak emission level radiated by the device.				

Test Setup:

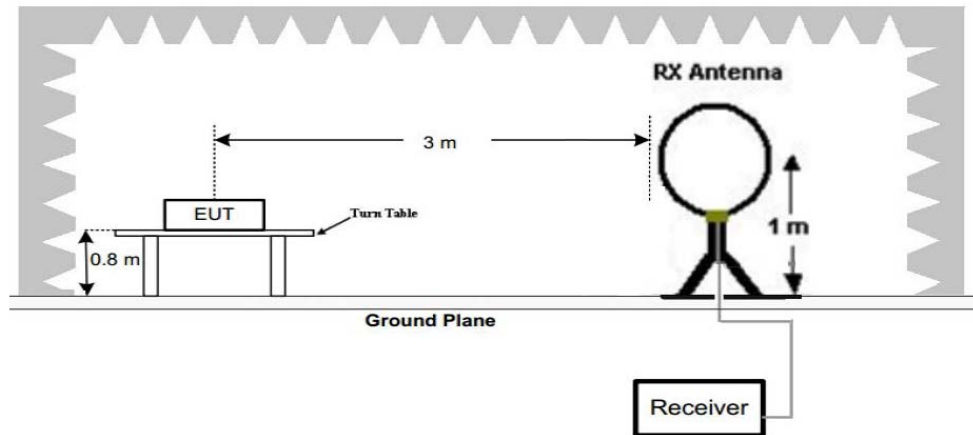


Figure 1. Below 30MHz

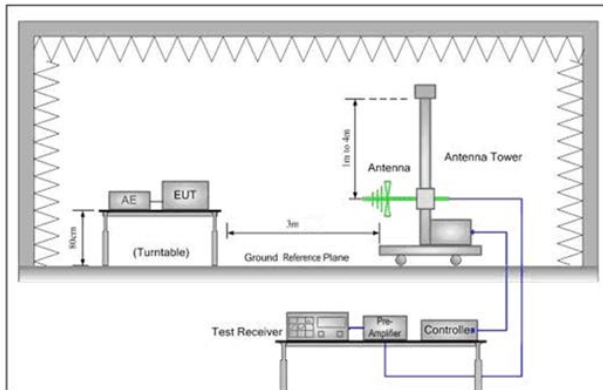


Figure 2. 30MHz to 1GHz

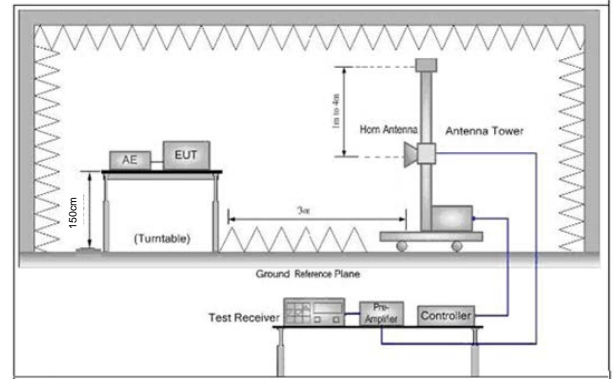


Figure 3. Above 1 GHz

Test Procedure:

- a. 1) Below 1G: The EUT was placed on the top of a rotating table 0.8 meters above the ground at a 3 meter semi-anechoic chamber. The table was rotated 360 degrees to determine the position of the highest radiation.  
2) Above 1G: The EUT was placed on the top of a rotating table 1.5 meters above the ground at a 3 meter semi-anechoic chamber. The table was rotated 360 degrees to determine the position of the highest radiation.  
Note: For the radiated emission test above 1GHz:  
Place the measurement antenna away from each area of the EUT determined to be a source of emissions at the specified measurement distance, while keeping the measurement antenna aimed at the source of emissions at each frequency of significant emissions, with polarization oriented for maximum response. The measurement antenna may have to be higher or lower than the EUT, depending on the radiation pattern of the emission and staying aimed at the emission source for receiving the maximum signal. The final measurement antenna elevation shall be that which maximizes the emissions. The measurement antenna elevation for maximum emissions shall be restricted to a range of heights of from 1 m to 4 m above the ground or reference ground plane.
- b. The EUT was set 3 meters away from the interference-receiving antenna, which was mounted on the top of a variable-height antenna tower.
- c. The antenna height is varied from one meter to four meters above the ground to determine the maximum value of the field strength. Both horizontal and vertical polarizations of the antenna are set to make the

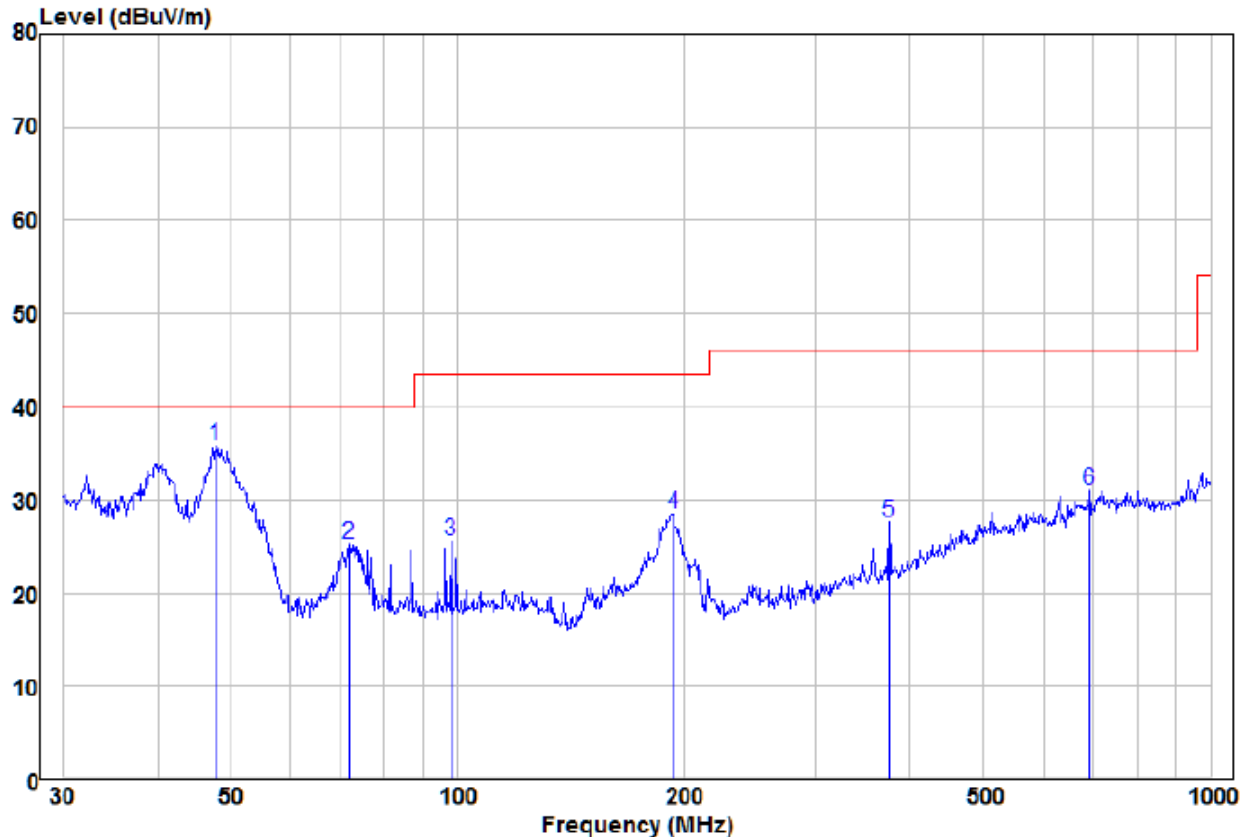
	<p>measurement.</p> <p>d. For each suspected emission, the EUT was arranged to its worst case and then the antenna was tuned to heights from 1 meter to 4 meters (for the test frequency of below 30MHz, the antenna was tuned to heights 1 meter) and the rotatable table was turned from 0 degrees to 360 degrees to find the maximum reading.</p> <p>e. The test-receiver system was set to Peak Detect Function and Specified Bandwidth with Maximum Hold Mode.</p> <p>f. If the emission level of the EUT in peak mode was 10dB lower than the limit specified, then testing could be stopped and the peak values of the EUT would be reported. Otherwise the emissions that did not have 10dB margin would be re-tested one by one using peak, quasi-peak or average method as specified and then reported in a data sheet.</p> <p>g. Repeat above procedures until all frequencies measured was complete.</p>
Test Results:	Pass

Radiated Emission below 9K~30MHz	
the worst case	
Test mode:	Mode a

Frequency MHz	Polarization	Reading dB(uV)	Factor dB (1/m)	Level dB(uV/m) Peak	Limit dB(uV/m) Average	Margin dB	Pass/Fail
0.1101	Face	47.35	19.59	66.94	106.77	39.83	Pass
0.1101	Side	46.71	19.59	66.3	106.77	40.47	Pass

Note: No other emissions found between lowest internal used/generated frequencies to 30MHz. The peak level of the emission is less than the average limit, so the average level shall be less than the limit without test.

Radiated Emission		
30MHz~1GHz, the worst case		
Test mode:	Mode a	Vertical



	Freq	Read Level	Factor	Level	Limit Line	Over Limit	Remark	Pol/Phase
	MHz	dBm	dB/m	dBm/m	dBm/m	dB		
1 pp	47.83	15.55	20.23	35.78	40.00	-4.22	Peak	VERTICAL
2	71.83	6.92	18.35	25.27	40.00	-14.73	Peak	VERTICAL
3	98.14	5.10	20.44	25.54	43.50	-17.96	Peak	VERTICAL
4	193.77	10.46	18.08	28.54	43.50	-14.96	Peak	VERTICAL
5	374.62	4.18	23.46	27.64	46.00	-18.36	Peak	VERTICAL
6	691.99	1.12	29.87	30.99	46.00	-15.01	Peak	VERTICAL

Remark:

The field strength is calculated by adding the Antenna Factor, Cable Factor & Preamplifier. The basic equation with a sample calculation is as follows:

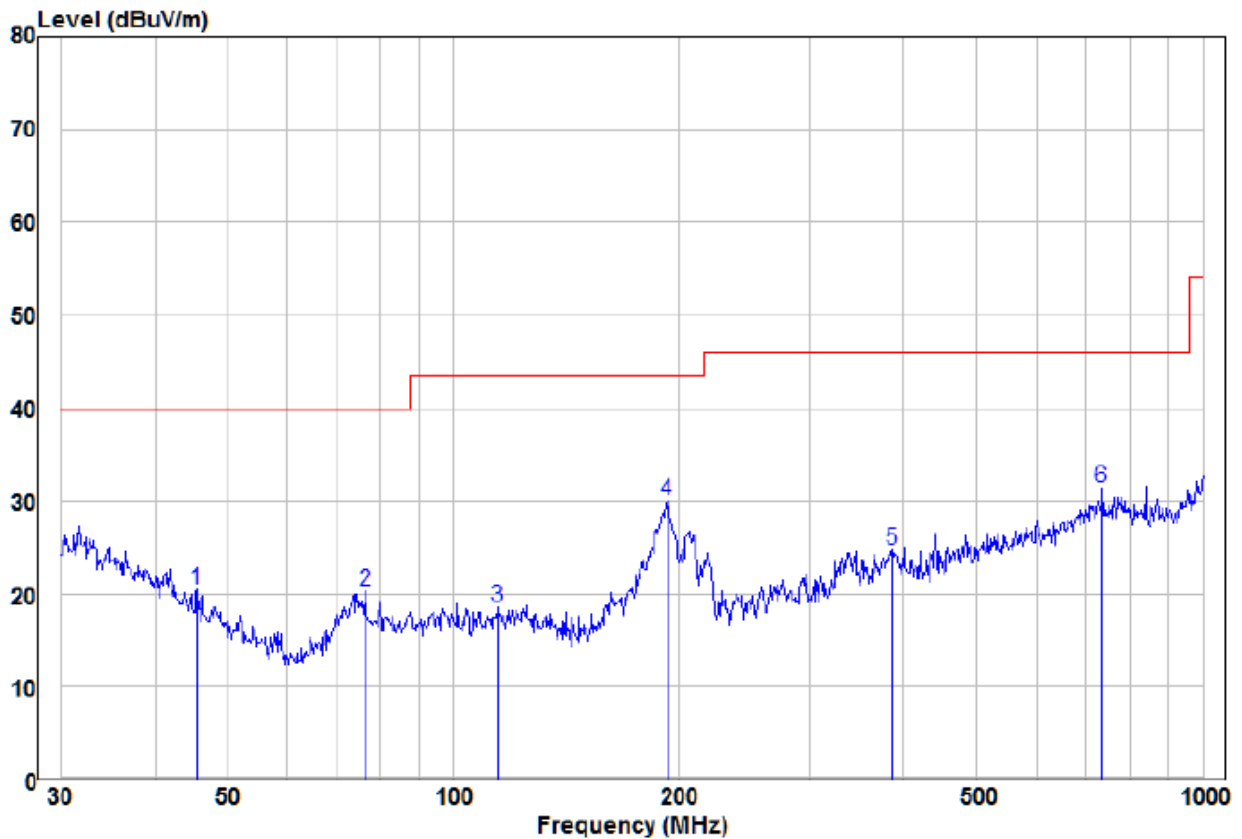
Final Test Level = Receiver Reading + Antenna Factor + Cable Factor

30MHz~1GHz, the worst case

Test mode:

Mode a

Horizontal



	Read			Limit	Over			
	Freq	Level	Factor	Level	Line	Limit	Remark	Pol/Phase
	MHz	dBm	dB/m	dBm/m	dBm/m	dB		
1	45.53	-1.10	21.54	20.44	40.00	-19.56	Peak	HORIZONTAL
2	76.51	1.18	19.11	20.29	40.00	-19.71	Peak	HORIZONTAL
3	114.51	-1.75	20.31	18.56	43.50	-24.94	Peak	HORIZONTAL
4 pp	193.09	12.03	18.03	30.06	43.50	-13.44	Peak	HORIZONTAL
5	385.28	0.93	23.73	24.66	46.00	-21.34	Peak	HORIZONTAL
6	734.49	1.08	30.25	31.33	46.00	-14.67	Peak	HORIZONTAL

Remark:

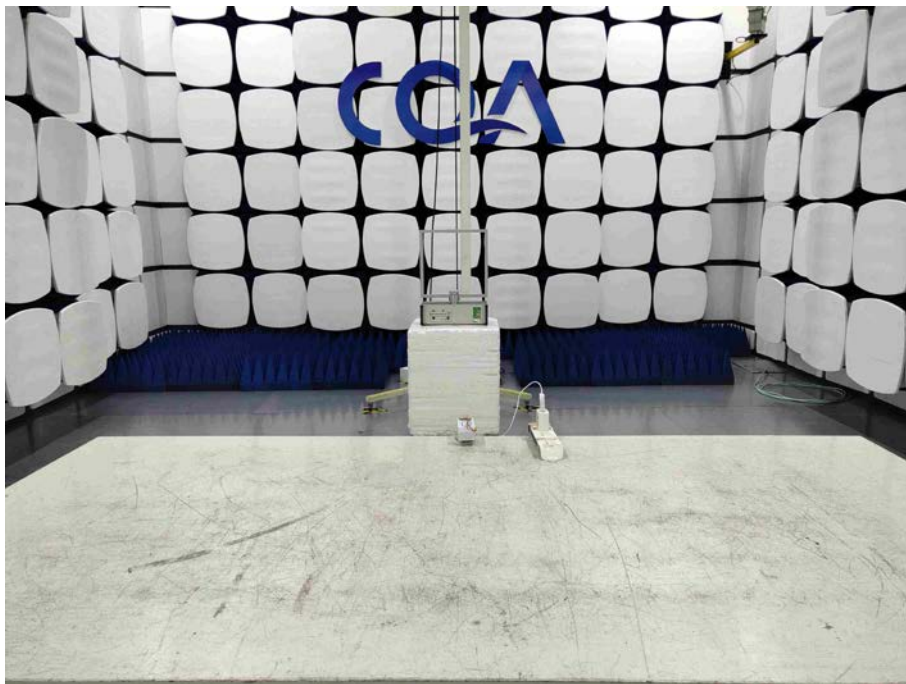
The field strength is calculated by adding the Antenna Factor, Cable Factor & Preamplifier. The basic equation with a sample calculation is as follows:

Final Test Level = Receiver Reading + Antenna Factor + Cable Factor

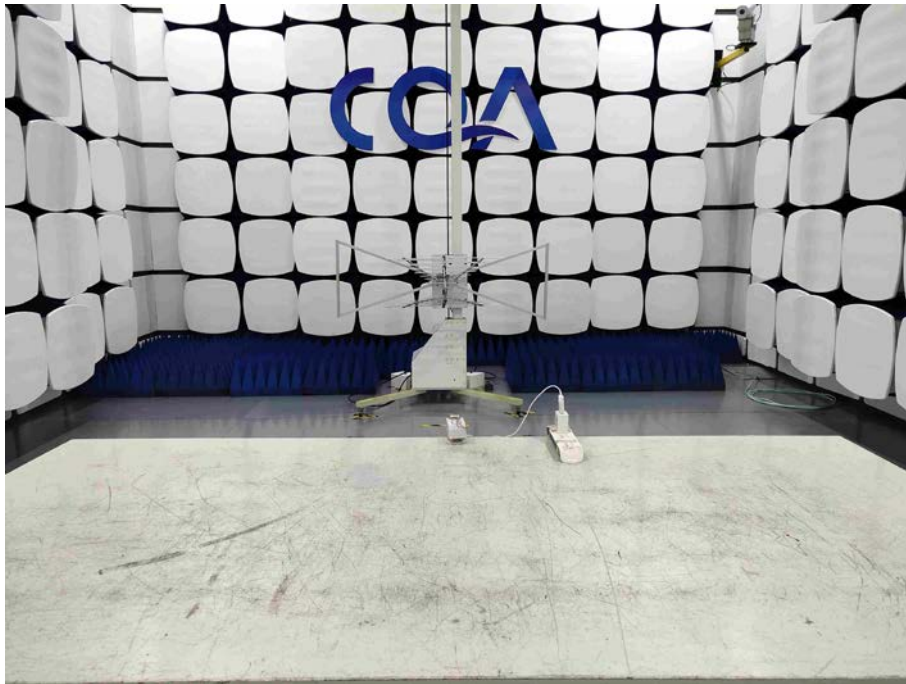
## 6 Photographs - EUT Test Setup

### 6.1 Radiated Emission

9KHz~30MHz:



30MHz~1GHz:



## 6.2 Conducted Emission

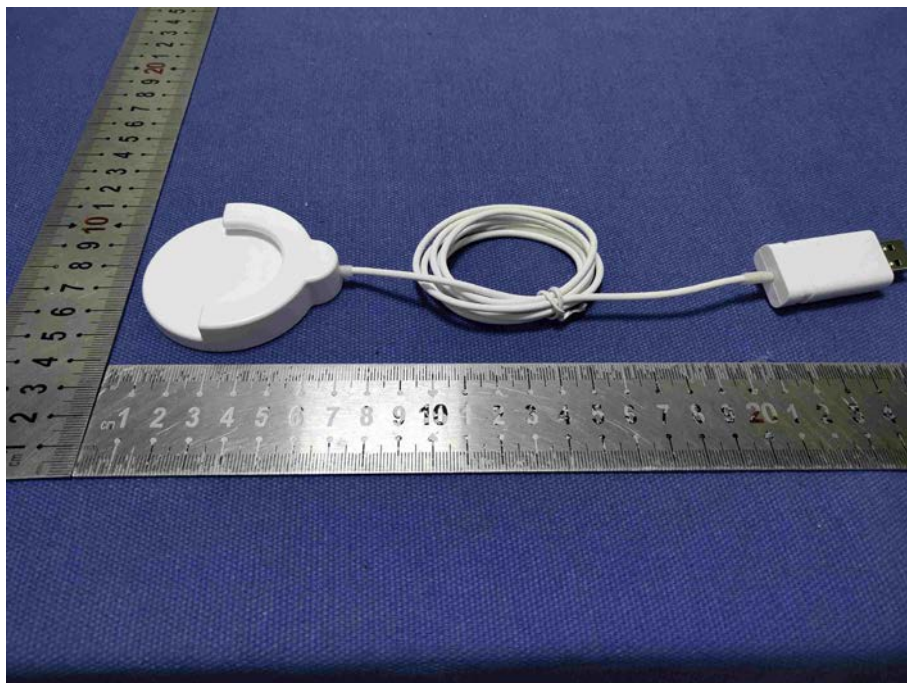


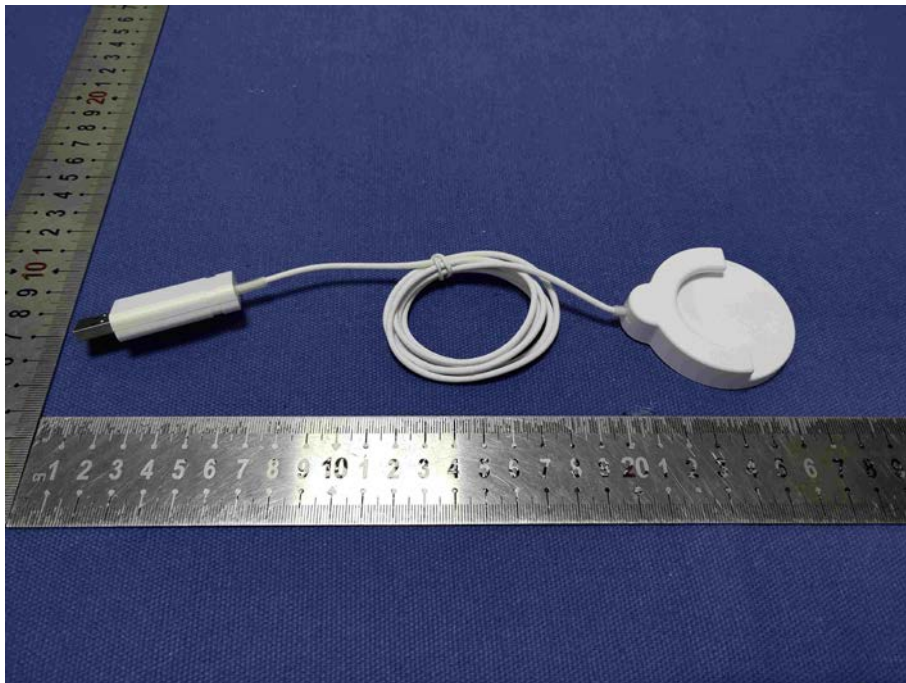
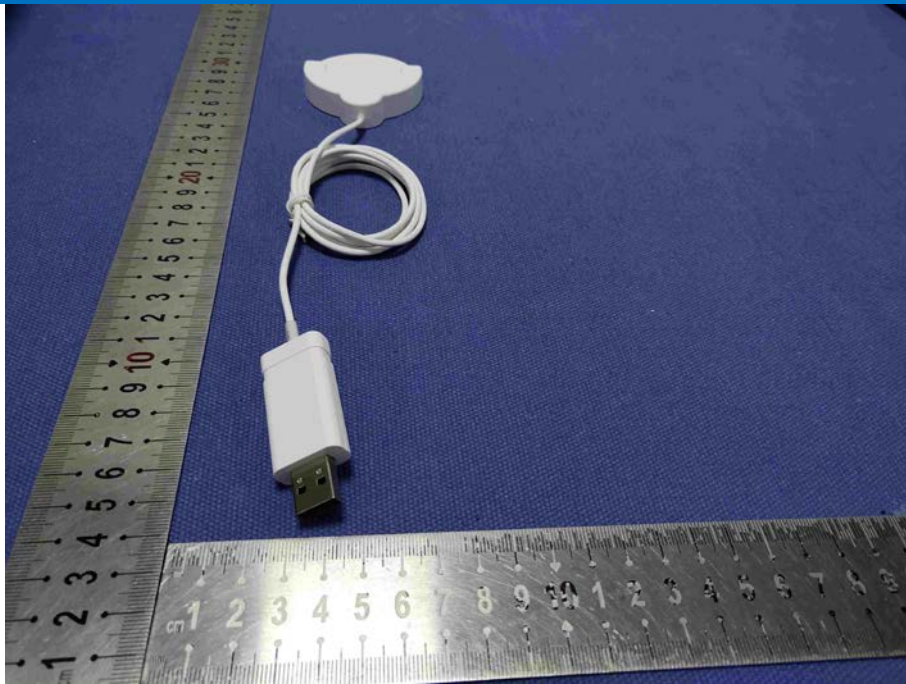
## 7 Photographs - EUT Constructional Details

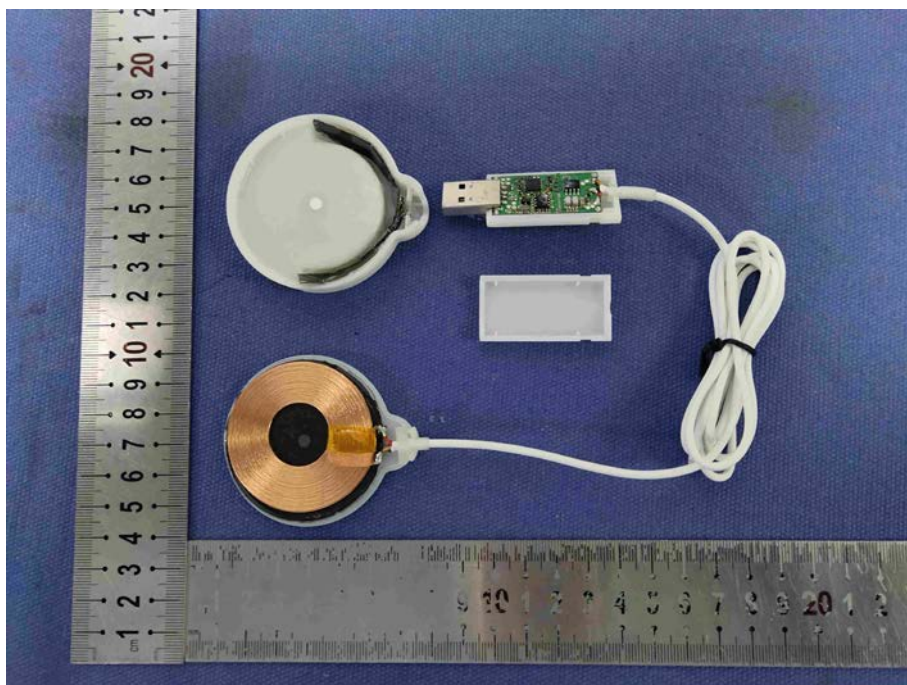


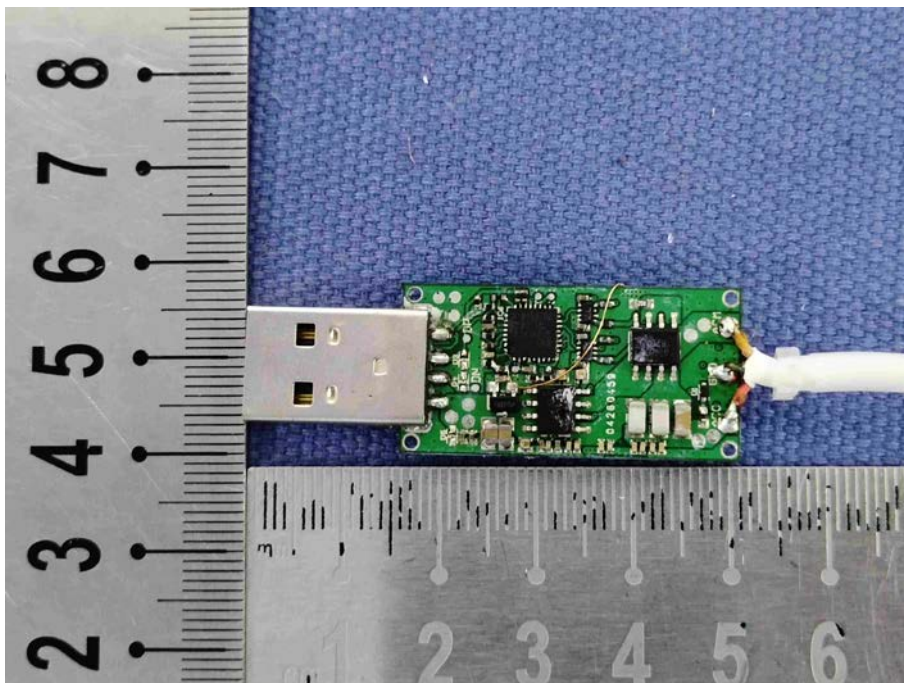
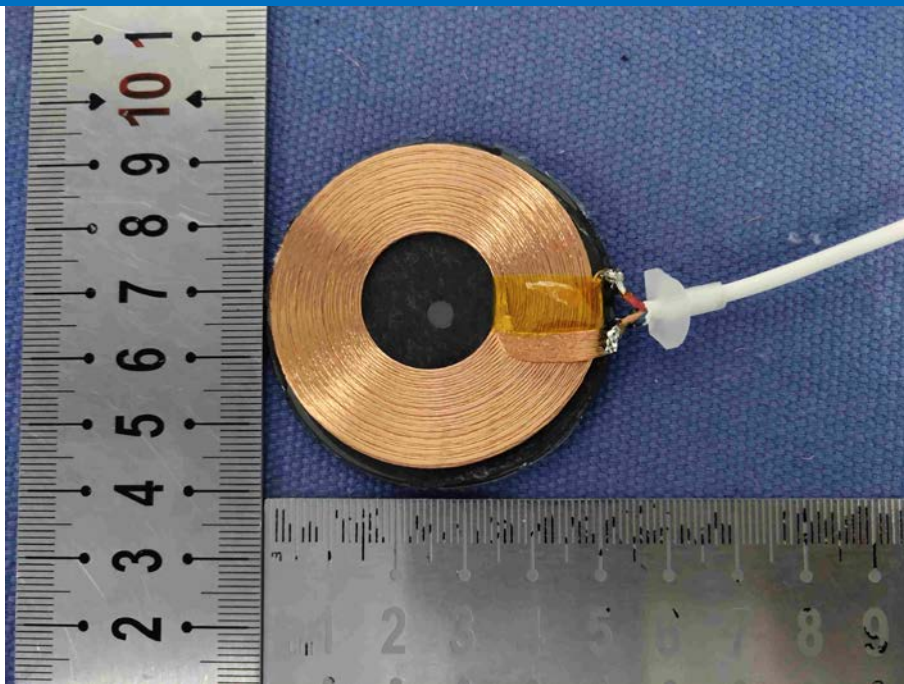
Test Model No.: YT190428A

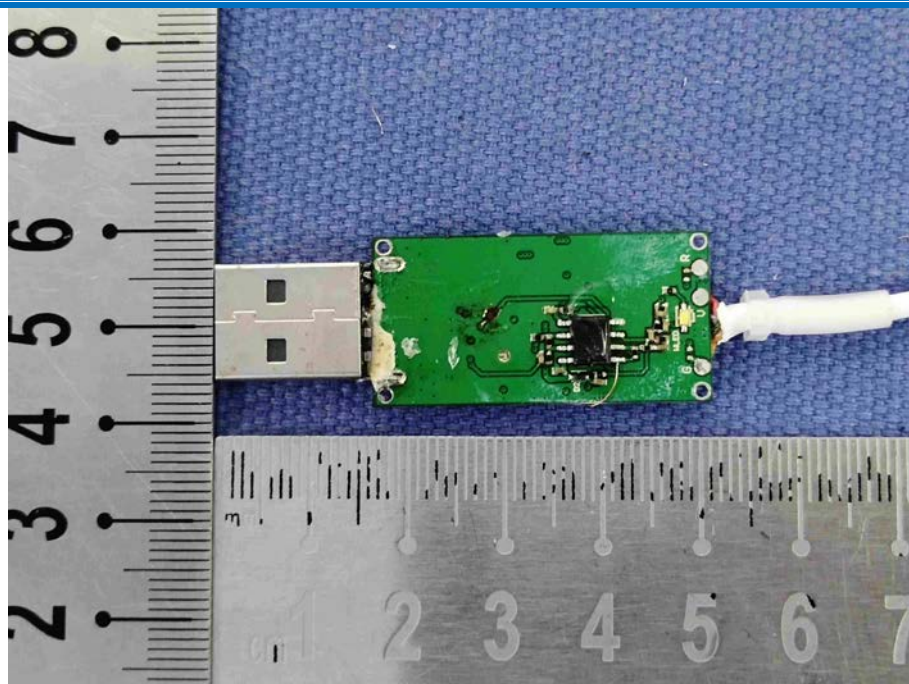












The End