

TEST REPORT

FCC ID: 2ATOAE-FOIL-R01

Product: E-Foil Remote Contoller

Model No.: E-Foil-R01

Additional Model: N/A

Trade Mark: N/A

Report No.: TCT190528E031

Issued Date: Jun. 13, 2019

Issued for:

TAKUMA SAS

1 Rue Inkermann, LILLE, 59900, France

Issued By:

Shenzhen Tongce Testing Lab.

**1B/F., Building 1, Yibaolai Industrial Park, Qiaotou, Fuyong, Baoan District,
Shenzhen, Guangdong, China**

TEL: +86-755-27673339

FAX: +86-755-27673332

Note: This report shall not be reproduced except in full, without the written approval of Shenzhen Tongce Testing Lab.

This document may be altered or revised by Shenzhen Tongce Testing Lab. personnel only, and shall be noted in the revision section of the document. The test results in the report only apply to the tested sample.

TABLE OF CONTENTS

1. Test Certification	3
2. Test Result Summary	4
3. EUT Description.....	5
4. General Information.....	6
4.1. Test Environment and Mode	6
4.2. Description of Support Units	6
5. Facilities and Accreditations	7
5.1. Facilities.....	7
5.2. Location	7
5.3. Measurement Uncertainty	7
6. Test Results and Measurement Data	8
6.1. Antenna Requirement	8
6.2. Conducted Emission	9
6.3. Radiated Emission Measurement	13
6.4. 20dB Occupied Bandwidth.....	22
Appendix A: Photographs of Test Setup	
Appendix B: Photographs of EUT	

1. Test Certification

Product:	E-Foil Remote Contoller
Model No.:	E-Foil-R01
Additional Model:	N/A
Trade Mark:	N/A
Applicant:	TAKUMA SAS
Address:	1 Rue Inkermann, LILLE, 59900, France
Manufacturer:	OmniSpecial Technology Co., Ltd
Address:	No.1 Xiaoqian Road, Dazhou, Qiaotou Town, Dongguan City, Guangdong Province, China
Date of Test:	May 29, 2019 - Jun. 12, 2019
Applicable Standards:	FCC CFR Title 47 Part 15 Subpart C Section 15.249 ANSI C63.10:2013

The above equipment has been tested by Shenzhen Tongce Testing Lab. and found compliance with the requirements set forth in the technical standards mentioned above. The results of testing in this report apply only to the product/system, which was tested. Other similar equipment will not necessarily produce the same results due to production tolerance and measurement uncertainties.

Tested By:



Jerry Xie

Date:

Jun. 12, 2019

Reviewed By:



Beryl Zhao

Date:

Jun. 13, 2019

Approved By:



Tomsin

Date:

Jun. 13, 2019

2. Test Result Summary

Requirement	CFR 47 Section	Result
Antenna Requirement	§15.203	PASS
AC Power Line Conducted Emission	§15.207	PASS
Field Strength of Fundamental	§15.249 (a)	PASS
Spurious Emissions	§15.249 (a) (d)/ §15.209	PASS
Band Edge	§15.249 (d)/ §15.205	PASS
20dB Occupied Bandwidth	§15.215 (c)	PASS

Note:

1. Pass: Test item meets the requirement.
2. Fail: Test item does not meet the requirement.
3. N/A: Test case does not apply to the test object.
4. The test result judgment is decided by the limit of test standard.

3. EUT Description

Product:	E-Foil Remote Contoller
Model No.:	E-Foil-R01
Additional Model:	N/A
Trade Mark:	N/A
Hardware Version:	TX-KEY V:19.4 RX-MAIN V:19.4
Software Version:	1.0
Operation Frequency:	2466MHz
Number of Channel:	1
Modulation Technology:	GFSK
Antenna Type:	PCB Antenna
Antenna Gain:	-5dBi
Power Supply:	Rechargeable Li-ion Battery DC 3.7V
AC adapter:	Adapter Information: MODEL: FY50408000 INPUT: AC 100-240V, 50/60Hz, 5A 500VA OUTPUT: DC 50.4V, 8A

Operation Frequency Each of Channel

Channel	Frequency
1	2466MHz

4. General Information

4.1. Test Environment and Mode

Operating Environment:	
Temperature:	25.0 °C
Humidity:	54 % RH
Atmospheric Pressure:	1010 mbar
Test Mode:	
Engineering mode:	Keep the EUT in continuous transmitting
<p>The sample was placed (0.8m below 1GHz, 1.5m above 1GHz) above the ground plane of 3m chamber. Measurements in both horizontal and vertical polarities were performed. During the test, each emission was maximized by: having the EUT continuously working, investigated all operating modes, rotated about all 3 axis (X, Y & Z) and considered typical configuration to obtain worst position, manipulating interconnecting cables, rotating the turntable, varying antenna height from 1m to 4m in both horizontal and vertical polarizations. The emissions worst-case (Z axis) are shown in Test Results of the following pages.</p>	

4.2. Description of Support Units

The EUT has been tested as an independent unit together with other necessary accessories or support units. The following support units or accessories were used to form a representative test configuration during the tests.

Equipment	Model No.	Serial No.	FCC ID	Trade Name
/	/	/	/	/

Note:

1. All the equipment/cables were placed in the worst-case configuration to maximize the emission during the test.
2. Grounding was established in accordance with the manufacturer's requirements and conditions for the intended use.

5. Facilities and Accreditations

5.1. Facilities

The test facility is recognized, certified, or accredited by the following organizations:

- FCC - Registration No.: 645098

Shenzhen Tongce Testing Lab

The 3m Semi-anechoic chamber has been registered and fully described in a report with the (FCC) Federal Communications Commission. The acceptance letter from the FCC is maintained in our files.

- IC - Registration No.: 10668A-1

The 3m Semi-anechoic chamber of Shenzhen TCT Testing Technology Co., Ltd. has been registered by Certification and Engineering Bureau of Industry Canada for radio equipment testing

5.2. Location

Shenzhen Tongce Testing Lab

Address: 1B/F., Building 1, Yibaolai Industrial Park, Qiaotou, Fuyong, Baoan District, Shenzhen, Guangdong, China

TEL: +86-755-27673339

5.3. Measurement Uncertainty

The reported uncertainty of measurement $y \pm U$, where expanded uncertainty U is based on a standard uncertainty multiplied by a coverage factor of $k=2$, providing a level of confidence of approximately 95 %.

No.	Item	MU
1	Conducted Emission	$\pm 2.56\text{dB}$
2	RF power, conducted	$\pm 0.12\text{dB}$
3	Spurious emissions, conducted	$\pm 0.11\text{dB}$
4	All emissions, radiated(<1GHz)	$\pm 3.92\text{dB}$
5	All emissions, radiated(>1GHz)	$\pm 4.28\text{dB}$
6	Temperature	$\pm 0.1^{\circ}\text{C}$
7	Humidity	$\pm 1.0\%$

6. Test Results and Measurement Data

6.1. Antenna Requirement

Standard requirement:

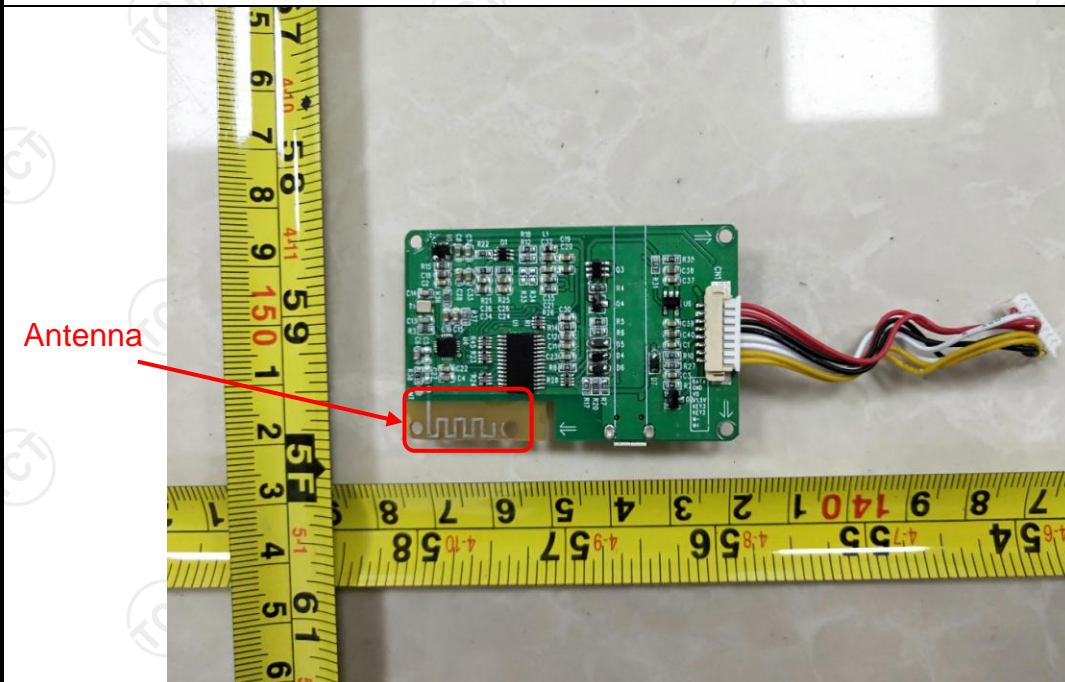
FCC Part15 C Section 15.203

15.203 requirement:

An intentional radiator shall be designed to ensure that no antenna other than that furnished by the responsible party shall be used with the device. The use of a permanently attached antenna or of an antenna that uses a unique coupling to the intentional radiator, the manufacturer may design the unit so that a broken antenna can be replaced by the user, but the use of a standard antenna jack or electrical connector is prohibited.

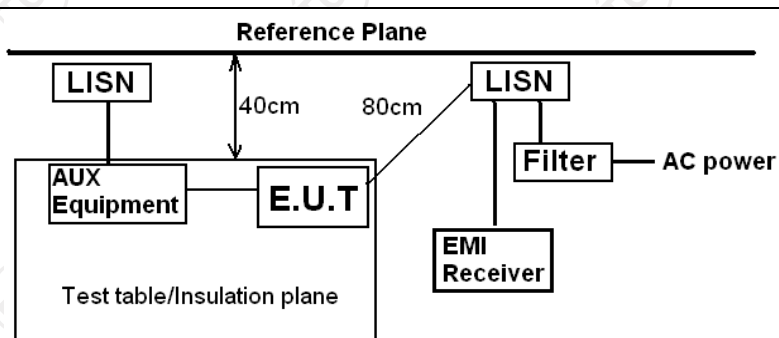
E.U.T Antenna:

The EUT antenna is PCB antenna which permanently attached, and the best case gain of the antenna is -5dBi.



6.2. Conducted Emission

6.2.1. Test Specification

Test Requirement:	FCC Part15 C Section 15.207														
Test Method:	ANSI C63.10:2013														
Frequency Range:	150 kHz to 30 MHz														
Receiver setup:	RBW=9 kHz, VBW=30 kHz, Sweep time=auto														
Limits:	<table><tr><th rowspan="2">Frequency range (MHz)</th><th colspan="2">Limit (dBuV)</th></tr><tr><th>Quasi-peak</th><th>Average</th></tr><tr><td>0.15-0.5</td><td>66 to 56*</td><td>56 to 46*</td></tr><tr><td>0.5-5</td><td>56</td><td>46</td></tr><tr><td>5-30</td><td>60</td><td>50</td></tr></table>	Frequency range (MHz)	Limit (dBuV)		Quasi-peak	Average	0.15-0.5	66 to 56*	56 to 46*	0.5-5	56	46	5-30	60	50
Frequency range (MHz)	Limit (dBuV)														
	Quasi-peak	Average													
0.15-0.5	66 to 56*	56 to 46*													
0.5-5	56	46													
5-30	60	50													
Test Setup:	<div><p>Reference Plane</p><p>Remark: E.U.T: Equipment Under Test LISN: Line Impedance Stabilization Network Test table height=0.8m</p></div>														
Test Mode:	Transmitting mode with modulation														
Test Procedure:	<div><div>1. The E.U.T and simulators are connected to the main power through a line impedance stabilization network (L.I.S.N.). This provides a 50ohm/50uH coupling impedance for the measuring equipment.</div><div>2. The peripheral devices are also connected to the main power through a LISN that provides a 50ohm/50uH coupling impedance with 50ohm termination. (Please refer to the block diagram of the test setup and photographs).</div><div>3. Both sides of A.C. line are checked for maximum conducted interference. In order to find the maximum emission, the relative positions of equipment and all of the interface cables must be changed according to ANSI C63.10:2013 on conducted measurement.</div></div>														
Test Result:	PASS														

6.2.2. Test Instruments

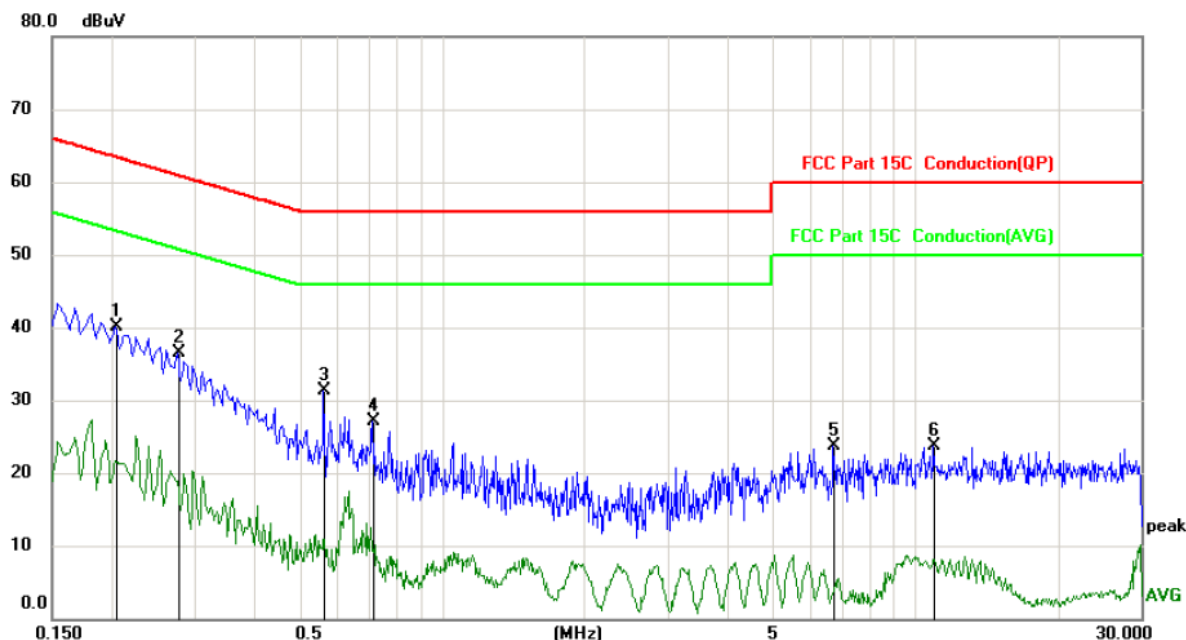
Conducted Emission Shielding Room Test Site (843)				
Equipment	Manufacturer	Model	Serial Number	Calibration Due
Test Receiver	R&S	ESPI	101402	Jul. 17, 2019
LISN	Schwarzbeck	NSLK 8126	8126453	Sep. 20, 2019
Coax cable (9KHz-30MHz)	TCT	CE-05	N/A	Sep. 16, 2019
EMI Test Software	Shurple Technology	EZ-EMC	N/A	N/A

Note: The calibration interval of the above test instruments is 12 months and the calibrations are traceable to international system unit (SI).

6.2.3. Test data

Please refer to following diagram for individual

Conducted Emission on Line Terminal of the power line (150 kHz to 30MHz)



Site: Phase: **L1** Temperature: 25
Limit: FCC Part 15C Conduction(QP) Power: Humidity: 55 %

No.	Mk.	Freq. MHz	Reading Level dBuV	Correct Factor dB	Measure- ment dBuV	Limit dBuV	Over dB	Detector	Comment
1	*	0.2040	30.01	10.13	40.14	63.45	-23.31	peak	
2		0.2760	26.30	10.13	36.43	60.94	-24.51	peak	
3		0.5639	21.18	10.13	31.31	56.00	-24.69	peak	
4		0.7125	16.90	10.12	27.02	56.00	-28.98	peak	
5		6.7110	13.49	10.14	23.63	60.00	-36.37	peak	
6		10.9500	13.53	10.15	23.68	60.00	-36.32	peak	

Note:

Freq. = Emission frequency in MHz

Reading level (dBuV) = Receiver reading

Corr. Factor (dB) = Liscn factor + Cable loss

Measurement (dBuV) = Reading level (dBuV) + Corr. Factor (dB)

Limit (dBuV) = Limit stated in standard

Margin (dB) = Measurement (dBuV) – Limits (dBuV)

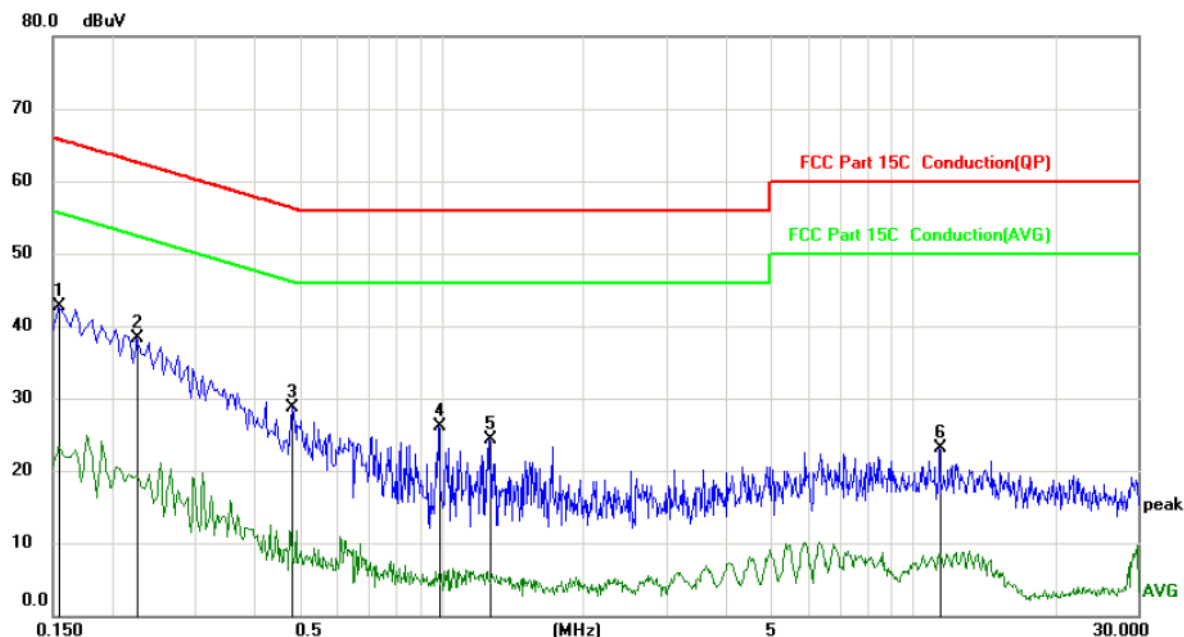
Q.P. =Quasi-Peak

AVG =average

Any value more than 10dB below limit have not been specifically reported.

* is meaning the worst frequency has been tested in the frequency range 150 kHz to 30MHz

Conducted Emission on Neutral Terminal of the power line (150 kHz to 30MHz)



Site: Phase: **N** Temperature: 25
Limit: FCC Part 15C Conduction(QP) Power: Humidity: 55 %

No.	Mk.	Freq. MHz	Reading Level dBuV	Correct Factor dB	Measure- ment dBuV	Limit dBuV	Over dB	Detector	Comment
1	*	0.1545	32.53	10.12	42.65	65.75	-23.10	peak	
2		0.2265	28.17	10.13	38.30	62.58	-24.28	peak	
3		0.4830	18.67	10.13	28.80	56.29	-27.49	peak	
4		0.9870	16.00	10.12	26.12	56.00	-29.88	peak	
5		1.2660	14.12	10.12	24.24	56.00	-31.76	peak	
6		11.4000	12.97	10.16	23.13	60.00	-36.87	peak	

Note:

Freq. = Emission frequency in MHz

Reading level (dBuV) = Receiver reading

Corr. Factor (dB) = Lish factor + Cable loss

Measurement (dBuV) = Reading level (dBuV) + Corr. Factor (dB)

Limit (dBuV) = Limit stated in standard

Margin (dB) = Measurement (dBuV) – Limits (dBuV)

Q.P. =Quasi-Peak

AVG =average

Any value more than 10dB below limit have not been specifically reported.

* is meaning the worst frequency has been tested in the frequency range 150 kHz to 30MHz.

6.3. Radiated Emission Measurement

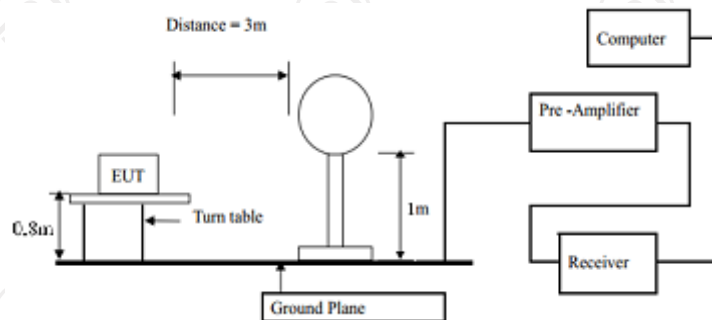
6.3.1. Test Specification

Test Requirement:	FCC Part15 C Section 15.209/ Part 2 J Section 2.1053				
Test Method:	ANSI C63.10:2013				
Frequency Range:	9 kHz to 10 GHz				
Measurement Distance:	3 m				
Antenna Polarization:	Horizontal & Vertical				
Receiver Setup:	Frequency	Detector	RBW	VBW	Remark
	9kHz- 150kHz	Quasi-peak	200Hz	1kHz	Quasi-peak Value
	150kHz- 30MHz	Quasi-peak	9kHz	30kHz	Quasi-peak Value
	30MHz-1GHz	Quasi-peak	120kHz	300kHz	Quasi-peak Value
	Above 1GHz	Peak	1MHz	3MHz	Peak Value
		Peak	1MHz	10Hz	Average Value
Limit(Field strength of the fundamental signal):	Frequency		Limit (dBuV/m @3m)		Remark
	5725Mhz- 5875MHz		94.00		Average Value
			114.00		Peak Value
Limit(Spurious Emissions):	Frequency		Limit (dBuV/m @3m)		Remark
	0.009-0.490		2400/F(KHz)		Quasi-peak Value
	0.490-1.705		24000/F(KHz)		Quasi-peak Value
	1.705-30		30		Quasi-peak Value
	30MHz-88MHz		40.0		Quasi-peak Value
	88MHz-216MHz		43.5		Quasi-peak Value
	216MHz-960MHz		46.0		Quasi-peak Value
	960MHz-1GHz		54.0		Quasi-peak Value
	Above 1GHz		54.0		Average Value
			74.0		Peak Value
Limit (band edge) :	Emissions radiated outside of the specified frequency bands, except for harmonics, shall be attenuated by at least 50 dB below the level of the fundamental or to the general radiated emission limits in Section 15.209, whichever is the lesser attenuation.				
Test Procedure:	<div>1. The EUT was placed on the top of a rotating table 0.8 meters above the ground at a 3 meter chamber in below 1GHz, 1.5m above the ground in above 1GHz. The table was rotated 360 degrees to determine the position of the highest radiation.</div> <div>2. The EUT was set 3 meters away from the interference-receiving antenna, which was mounted on the top of a variable-height antenna tower.</div> <div>3. The antenna height is varied from one meter to four meters above the ground to determine the maximum value of the field strength. Both horizontal and vertical polarizations of the antenna are set to make the measurement.</div>				

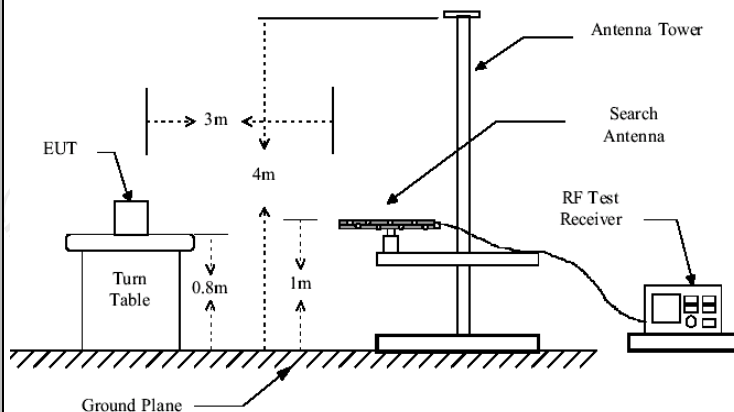
4. For each suspected emission, the EUT was arranged to its worst case and then the antenna was tuned to heights from 1 meter to 4 meters and the rotatable table was turned from 0 degrees to 360 degrees to find the maximum reading.
5. The test-receiver system was set to Peak Detect Function and Specified Bandwidth with Maximum Hold Mode.
6. If the emission level of the EUT in peak mode was 10dB lower than the limit specified, then testing could be stopped and the peak values of the EUT would be reported. Otherwise the emissions that did not have 10dB margin would be re-tested one by one using peak, quasi-peak or average method as specified and then reported in a data sheet.

Test setup:

For radiated emissions below 30MHz

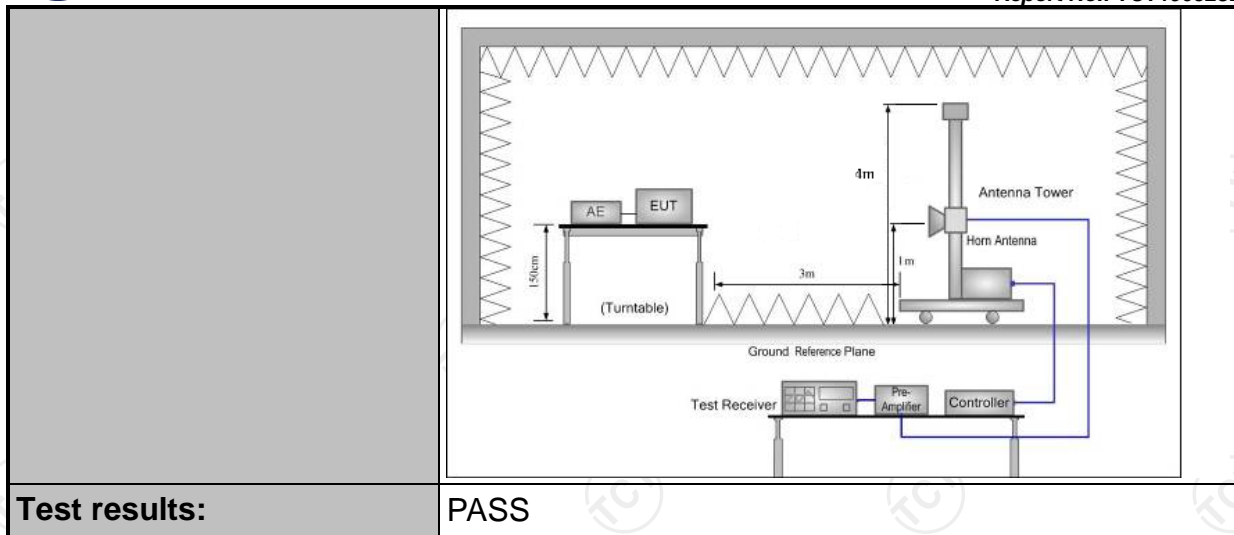


30MHz to 1GHz



Above 1GHz

(The diagram below shows the test setup that is utilized to make the measurements for emission from 1GHz to the tenth harmonic of the highest fundamental frequency or to 40GHz emissions, whichever is lower.)



6.3.2. Test Instruments

Radiated Emission Test Site (966)				
Name of Equipment	Manufacturer	Model	Serial Number	Calibration Due
Test Receiver	ROHDE&SCHW ARZ	ESIB7	100197	Jul. 17, 2019
Spectrum Analyzer	ROHDE&SCHW ARZ	FSQ40	200061	Sep. 20, 2019
Pre-amplifier	EM Electronics Corporation CO.,LTD	EM30265	07032613	Sep. 16, 2019
Pre-amplifier	HP	8447D	2727A05017	Sep. 16, 2019
Loop antenna	ZHINAN	ZN30900A	12024	Oct. 20, 2019
Broadband Antenna	Schwarzbeck	VULB9163	340	Sep. 02, 2019
Horn Antenna	Schwarzbeck	BBHA 9120D	631	Oct. 20, 2019
Horn Antenna	A-INFO	LB-180400-KF	J211020657	Sep. 16, 2019
Antenna Mast	Keleto	RE-AM	N/A	N/A
Coax cable (9KHz-1GHz)	TCT	RE-low-01	N/A	Sep. 16, 2019
Coax cable (9KHz-40GHz)	TCT	RE-high-02	N/A	Sep. 16, 2019
Coax cable (9KHz-1GHz)	TCT	RE-low-03	N/A	Sep. 16, 2019
Coax cable (9KHz-40GHz)	TCT	RE-high-04	N/A	Sep. 16, 2019
EMI Test Software	Shurple Technology	EZ-EMC	N/A	N/A

Note: The calibration interval of the above test instruments is 12 months and the calibrations are traceable to international system unit (SI).

6.3.3. Test Data

Field Strength of Fundamental

Frequency (MHz)	Reading Emission PK/AV (dBuV/m)	Correction Factor (dB)	Emission PK/AV (dBuV/m)	Horizontal /Vertical	Limits PK/AV (dBuV/m)	Margin (dB)
2466	72.96	8.80	81.76(PK)	H	114.0	-32.24
2466	47.47	8.80	56.27(AV)	H	94.0	-37.73
2466	72.53	8.80	81.33(PK)	V	114.0	-32.67
2466	46.61	8.80	55.41(AV)	V	94.0	-38.59

Spurious Emissions

Frequency Range (9 kHz-30MHz)

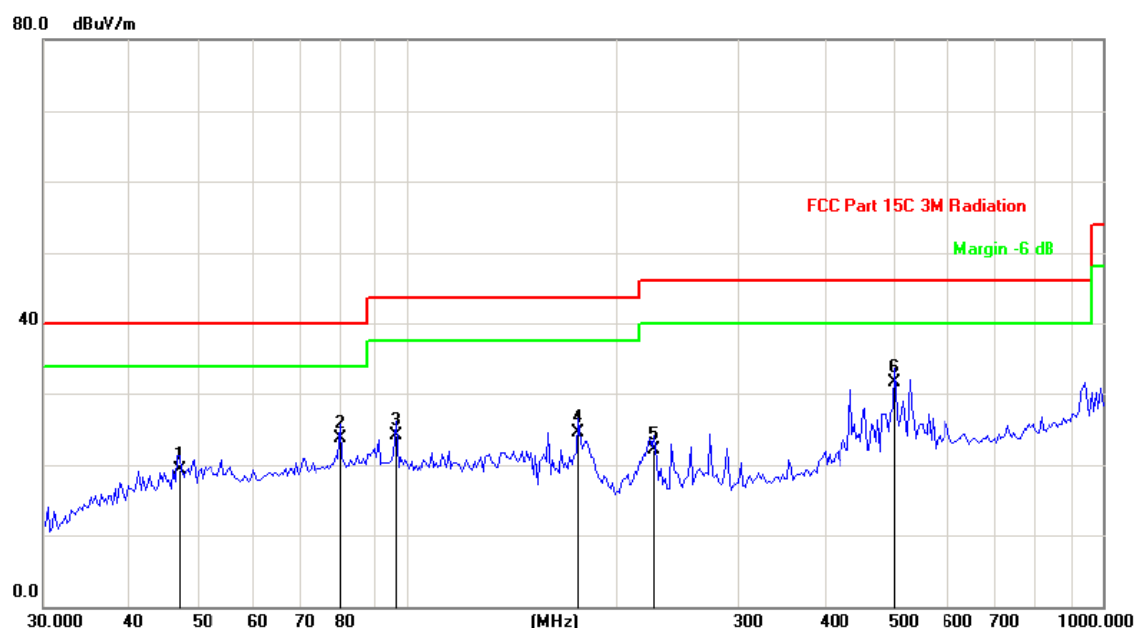
Frequency (MHz)	Level@3m (dBμV/m)	Limit@3m (dBμV/m)
--	--	--
--	--	--
--	--	--
--	--	--

Note: 1. Emission Level=Reading+ Cable loss-Antenna factor-Amp factor

2. The emission levels are 20 dB below the limit value, which are not reported. It is deemed to comply with the requirement

Frequency Range (30MHz-1GHz)

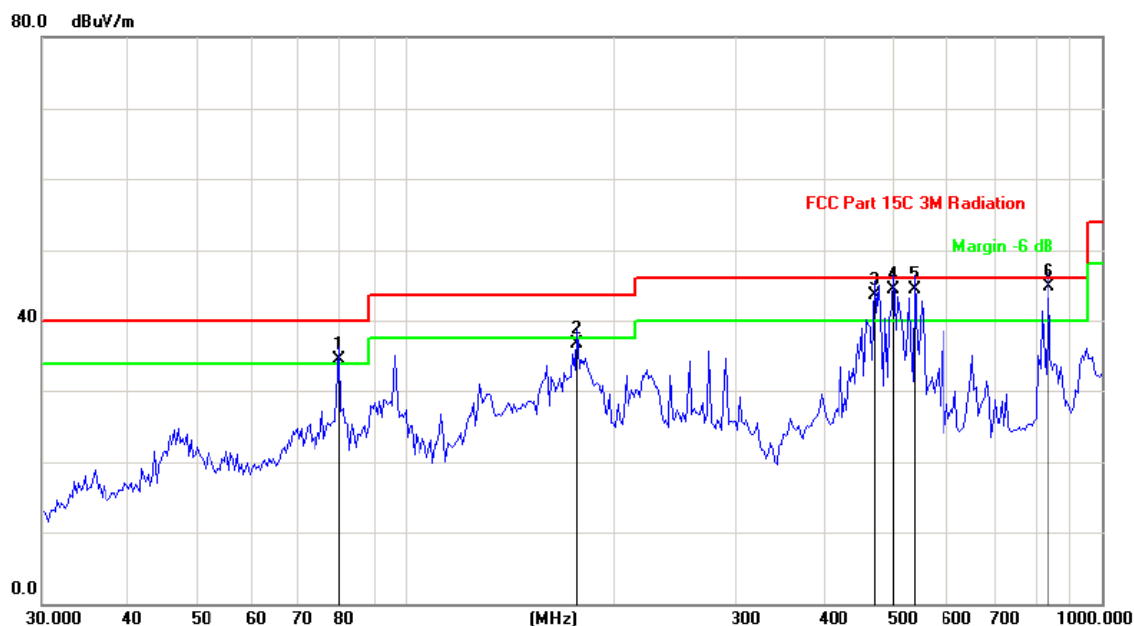
Horizontal:



Site: Polarization: **Horizontal** Temperature: 25
Limit: FCC Part 15C 3M Radiation Power: DC43.2V Humidity: 55 %

No.	Mk.	Freq. MHz	Reading Level dBuV	Correct Factor dB	Measure- ment dBuV/m	Limit dB/m	Over dB	Detector
1		47.0371	29.63	-10.32	19.31	40.00	-20.69	QP
2		80.2383	40.27	-16.55	23.72	40.00	-16.28	QP
3		96.3230	32.99	-8.89	24.10	43.50	-19.40	QP
4		176.2748	39.66	-15.07	24.59	43.50	-18.91	QP
5		227.0164	35.34	-13.23	22.11	46.00	-23.89	QP
6	*	502.2473	39.12	-7.38	31.74	46.00	-14.26	QP

Vertical:



Site: Polarization: **Horizontal** Temperature: 25
 Limit: FCC Part 15C 3M Radiation Power: DC43.2V Humidity: 55 %

No.	Mk.	Freq.	Reading Level	Correct Factor	Measurement	Limit	Over	
		MHz	dBuV	dB	dBuV/m	dB/m	dB	Detector
1	!	80.2383	51.15	-16.55	34.60	40.00	-5.40	QP
2		176.2748	51.75	-15.07	36.68	43.50	-6.82	QP
3	!	471.4665	51.44	-7.92	43.52	46.00	-2.48	QP
4	!	502.2473	51.70	-7.38	44.32	46.00	-1.68	QP
5	!	538.8106	51.48	-7.09	44.39	46.00	-1.61	QP
6	*	838.8870	48.69	-4.01	44.68	46.00	-1.32	QP

Note: Measurements were conducted in all channels (high, middle, low), and the worst case (low channel) was submitted only.

Above 1GHz

Channel: 2466MHz

Frequency (MHz)	Ant. Pol. H/V	Peak reading (dBμV)	AV reading (dBμV)	Correction Factor (dB/m)	Emission Level		Peak limit (dBμV/m)	AV limit (dBμV/m)	Margin (dB)
					Peak (dBμV/m)	AV (dBμV/m)			
4932	H	50.73	---	-3.98	46.75	---	74.00	54.00	-7.25
7398	H	49.26	---	0.57	49.83	---	74.00	54.00	-4.17
---	---	---	---	---	---	---	---	---	---
4932	V	51.48	---	-3.98	47.50	---	74.00	54.00	-6.50
7398	V	48.95	---	0.57	49.52	---	74.00	54.00	-4.48
---	---	---	---	---	---	---	---	---	---

Note:

1. Emission Level=Peak Reading + Correction Factor; Correction Factor= Antenna Factor + Cable loss – Pre-amplifier
2. Margin (dB) = Emission Level (Peak)(dBμV/m) - AV limit (dBμV/m)
3. The emission levels of other frequencies are very lower than the limit and not show in test report.
4. Measurements were conducted from 1 GHz to the 10th harmonic of highest fundamental frequency.
5. Data of measurement shown “---“in the above table mean that the reading of emissions is attenuated more than 20 dB below the limits or the field strength is too small to be measured.

Band Edge Requirement

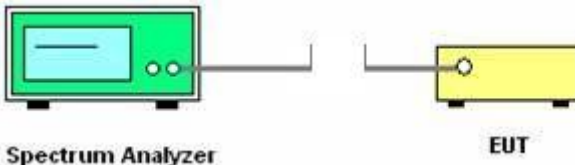
Channel: 2466MHz									
Frequency (MHz)	Ant. Pol. H/V	Peak reading (dBμV)	AV reading (dBμV)	Correction Factor (dB/m)	Emission Level		Peak limit (dBμV/m)	AV limit (dBμV/m)	Margin (dB)
					Peak (dBμV/m)	AV (dBμV/m)			
2390	H	38.56	---	8.36	46.92	---	74.00	54.00	-7.08
2400	H	39.17	---	8.40	47.57	---	74.00	54.00	-6.43
2483.5	H	41.62	---	9.03	50.65	---	74.00	54.00	-3.35
---	---	---	---	---	---	---	---	---	---
2390	V	36.24	---	8.36	44.60	---	74.00	54.00	-9.40
2400	V	36.88	---	8.40	45.28	---	74.00	54.00	-8.72
2483.5	V	40.57	---	9.03	49.60	---	74.00	54.00	-4.4
---	---	---	---	---	---	---	---	---	---

Note:

1. Emission Level=Peak Reading + Correction Factor; Correction Factor= Antenna Factor + Cable loss – Pre-amplifier
2. Margin (dB) = Emission Level (Peak)(dBμV/m) - AV limit (dBμV/m).
3. The emission levels of other frequencies are very lower than the limit and not show in test report.
4. Measurements were conducted from 1 GHz to the 10th harmonic of highest fundamental frequency.
5. Data of measurement shown "---" in the above table mean that the reading of emissions is attenuated more than 20 dB below the limits or the field strength is too small to be measured.

6.4.20dB Occupied Bandwidth

6.4.1. Test Specification

Test Requirement:	FCC Part15 C Section 15.215(c)/ Part 2 J Section 2.1049
Test Method:	ANSI C63.10: 2013
Limit:	N/A
	<ol style="list-style-type: none"> 1. According to the follow Test-setup, keep the relative position between the artificial antenna and the EUT. 2. Set to the maximum power setting and enable the EUT transmit continuously. 3. Use the following spectrum analyzer settings for 20dB Bandwidth measurement. Span = approximately 2 to 3 times the 20 dB bandwidth, centered on a hopping channel; RBW\geq1% of the 20 dB bandwidth; VBW\geqRBW; Sweep = auto; Detector function = peak; Trace = max hold. 4. Measure and record the results in the test report.
Test setup:	 <p>The diagram illustrates the test setup. On the left is a green Spectrum Analyzer with a screen and two knobs. A cable connects it to a yellow rectangular box on the right labeled 'EUT'.</p>
Test Mode:	Transmitting mode with modulation
Test results:	PASS

6.4.2. Test Instruments

RF Test Room				
Equipment	Manufacturer	Model	Serial Number	Calibration Due
Spectrum Analyzer	R&S	FSU	200054	Sep. 20, 2019

Note: The calibration interval of the above test instruments is 12 months and the calibrations are traceable to international system unit (SI).

6.4.3. Test data

Test Frequency (MHz)	20dB Occupy Bandwidth (MHz)	Limit	Conclusion
2466	1.12	---	PASS

Test plots as follows:



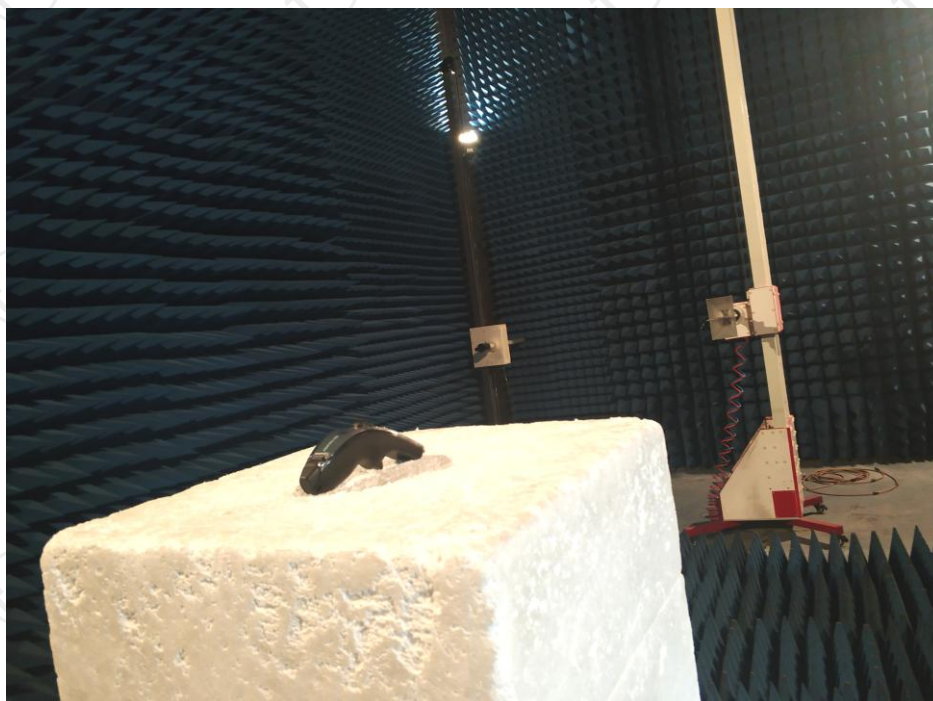
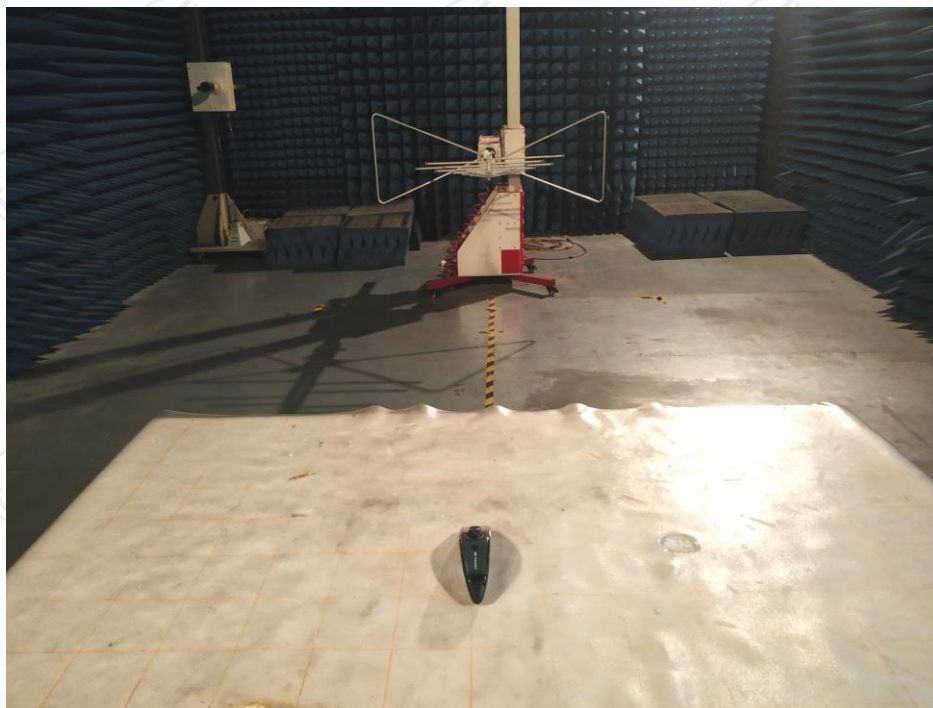
Date: 11.JUN.2019 19:38:39

Appendix A: Photographs of Test Setup

Product: E-Foil Remote Contoller

Model: E-Foil-R01

Radiated Emission



CE



Appendix B: Photographs of EUT

Product: E-Foil Remote Controller

Model: E-Foil-R01

External Photos

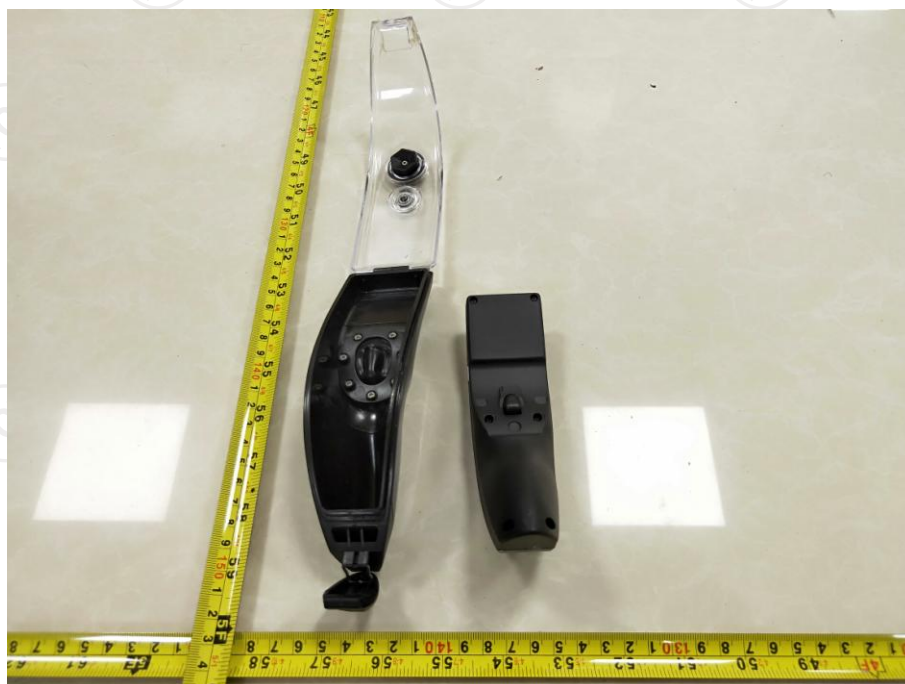










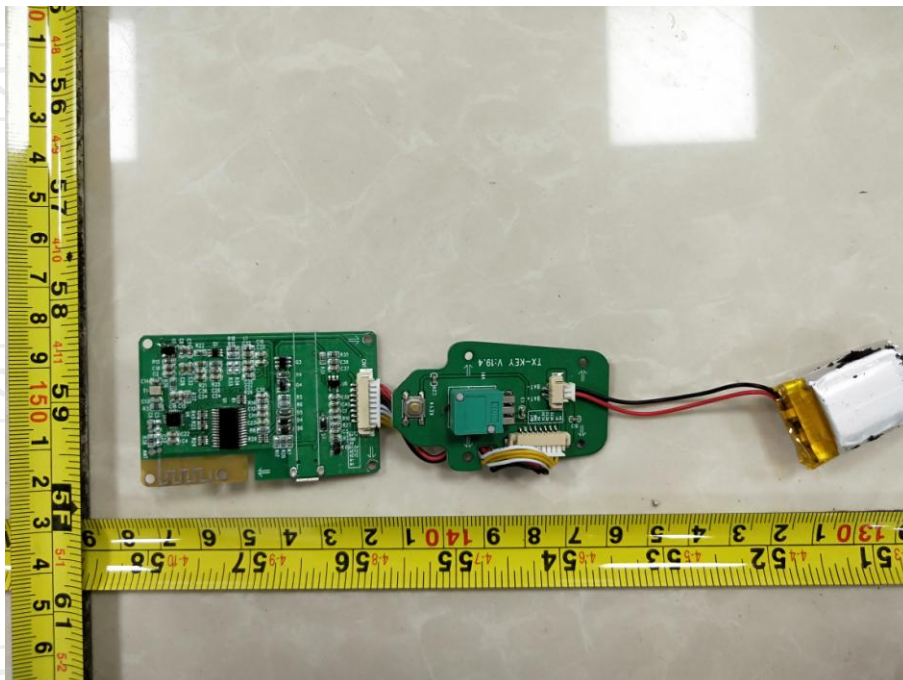
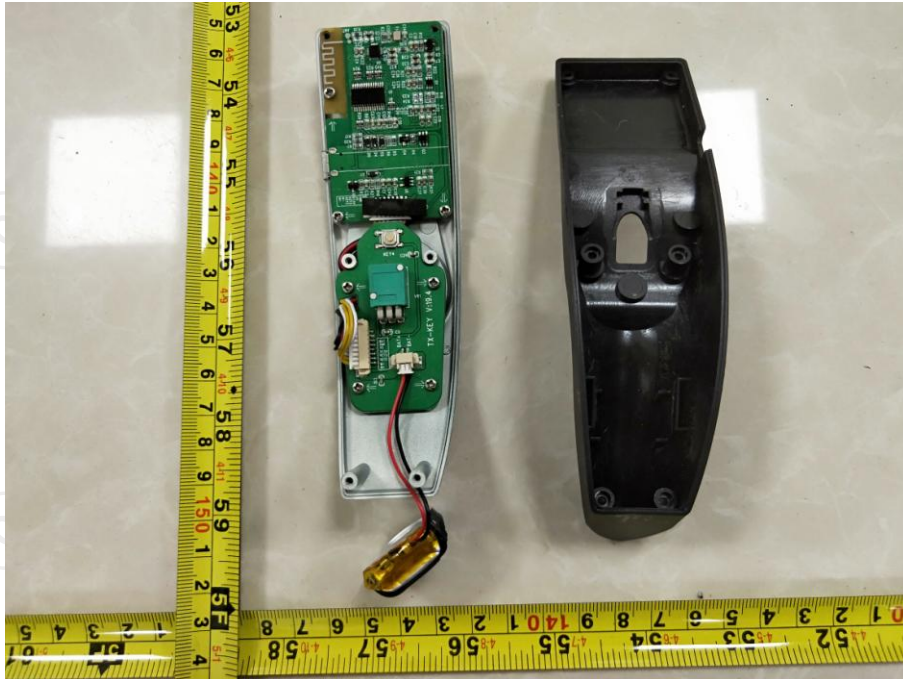


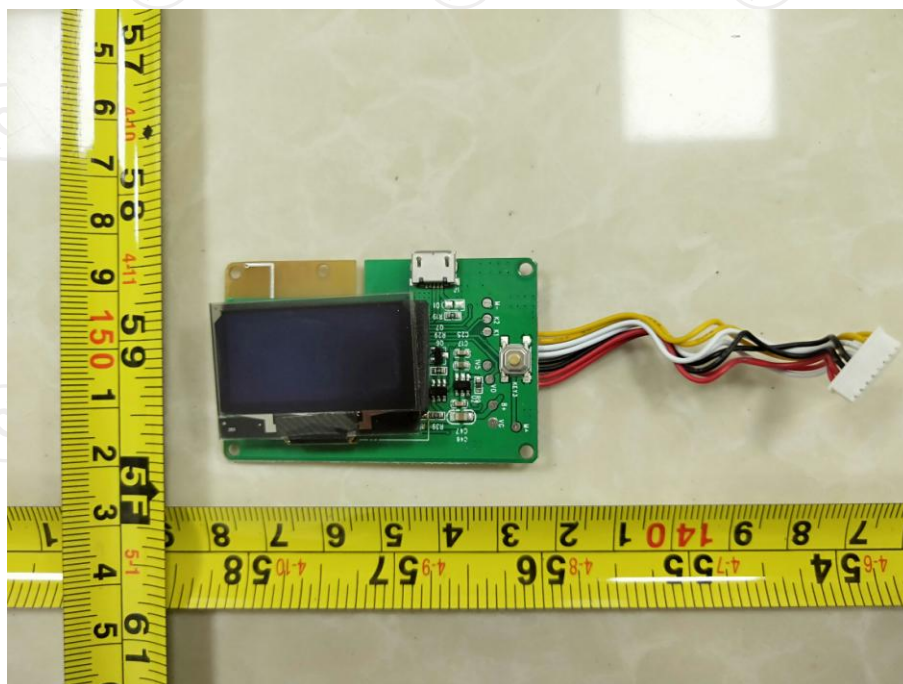
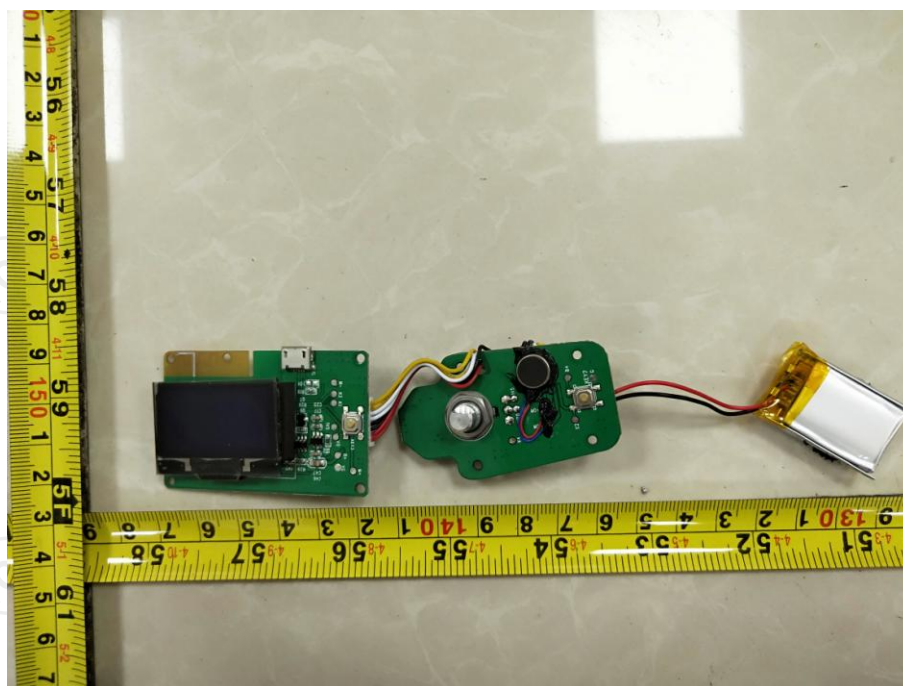


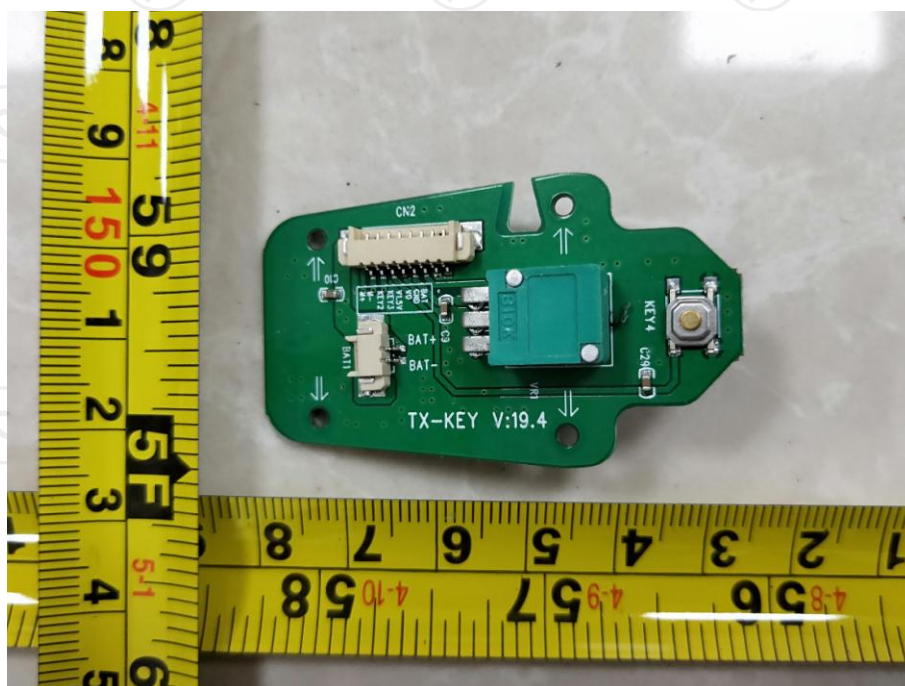
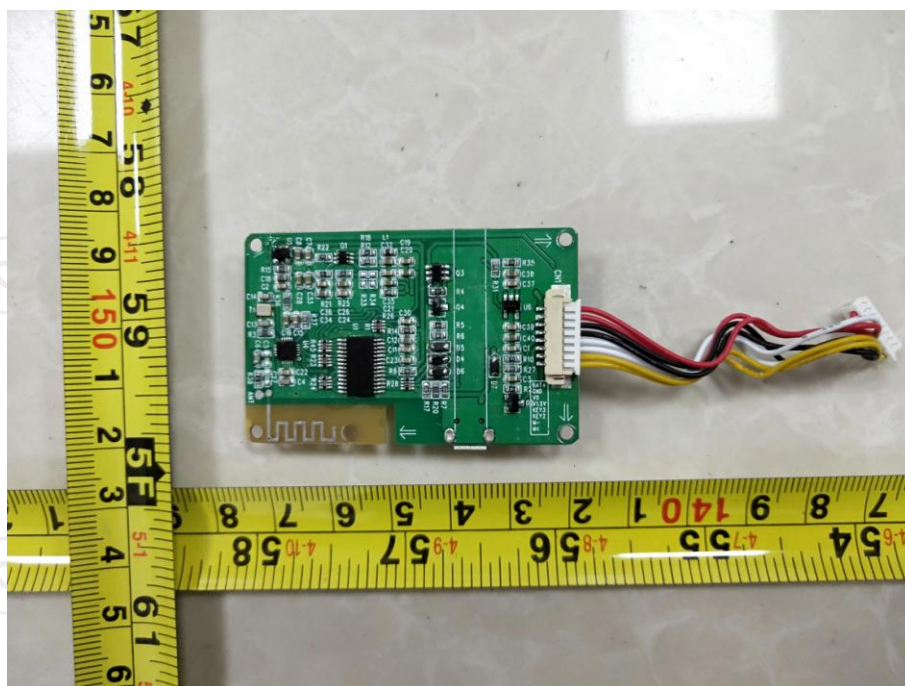


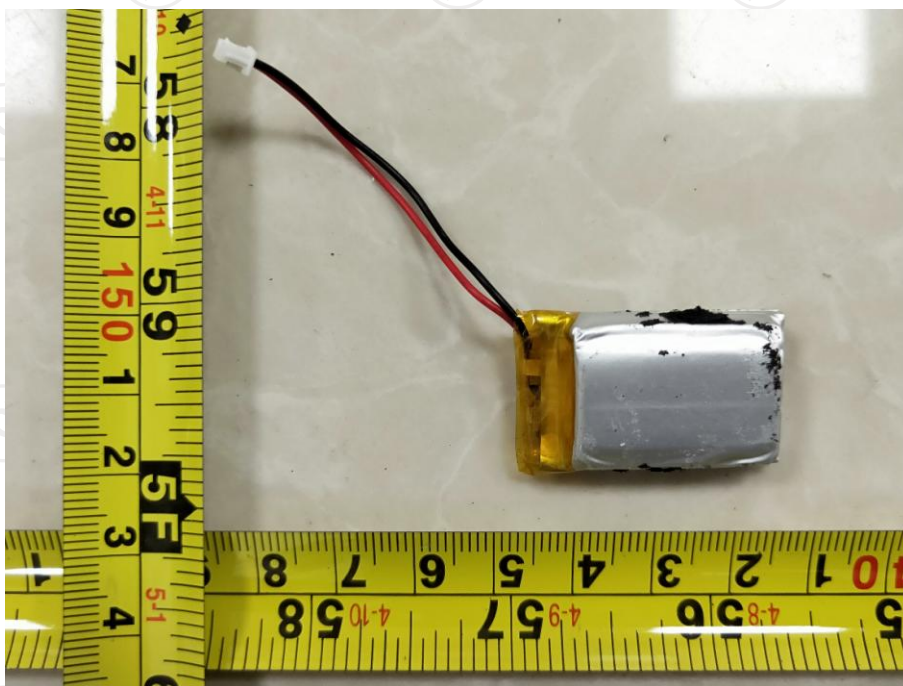
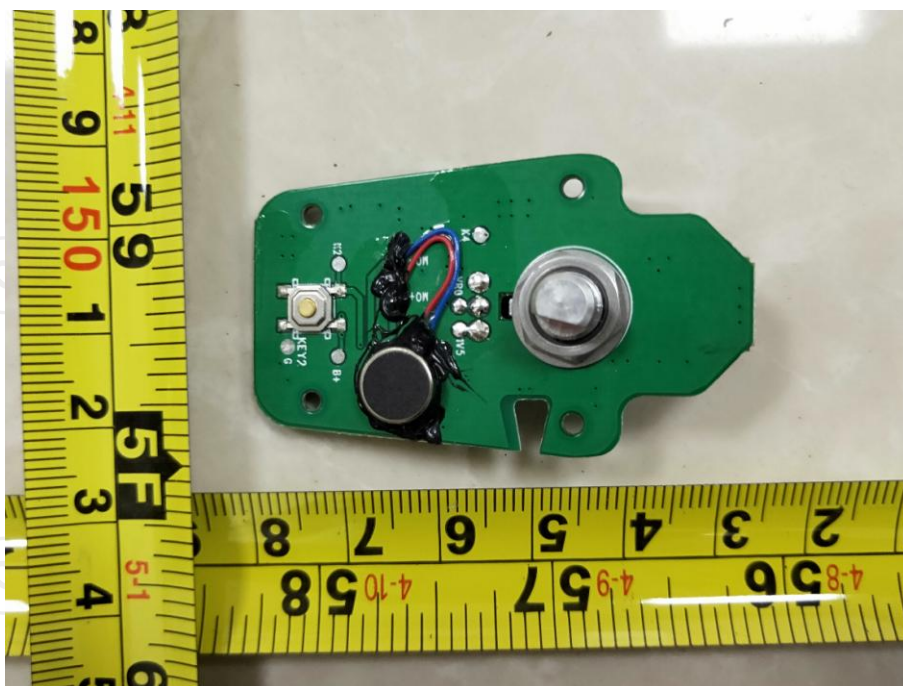


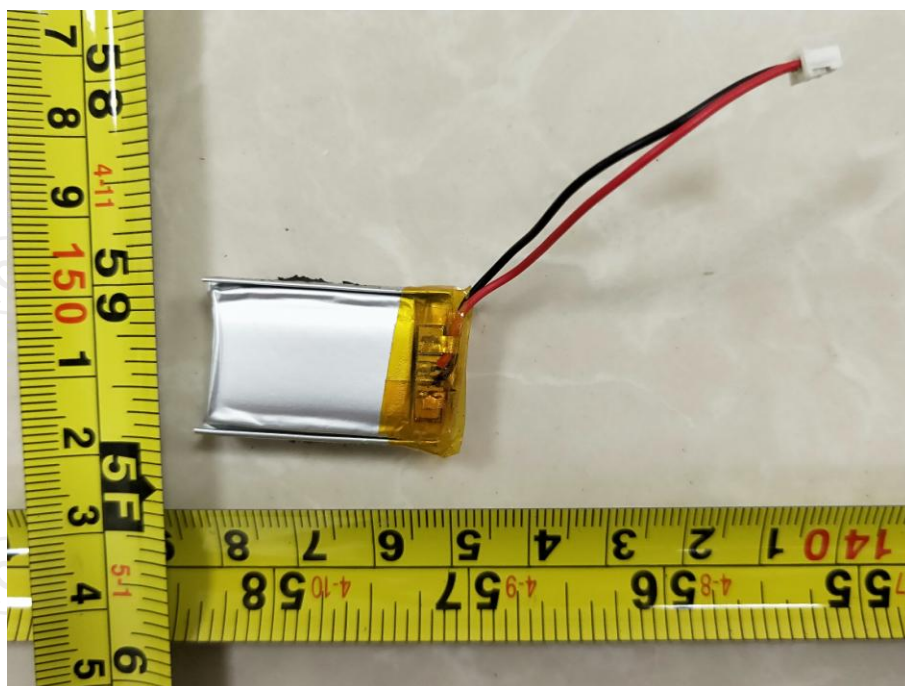
Product: E-Foil Remote Contoller
Model: E-Foil-R01
Internal Photos











*******END OF REPORT*******