

FRONT

Brookstone®

www.brookstone.com

Limited Lifetime Warranty

What is covered under the Limited Lifetime Warranty?
Lifeworks Technology warrants that this product will be free from defects in workmanship and materials under normal use ("Limited Lifetime Warranty"). In a case where the product is determined to be "defective", we will repair the product free of charge. If we cannot repair the product, we will replace it for you free of charge.

How long am I covered?
You are covered for the Lifetime of the product which means that as long as we are still manufacturing and selling the product we cover you under warranty.

What is not covered under the Limited Lifetime Warranty?

1. Normal wear and tear of product use.
2. Misuse, lack of care, mishandling, accidental damage, abuse or other abnormal use.
3. Use of the product other than for its intended purpose.
4. Damage caused by improper or unauthorized repair or maintenance.
5. Product that has been modified or altered.
6. Any product that is not manufactured by Lifeworks (including, without limitation, any non-Lifeworks product that is used in connection with the product).

Customer Service: 877-5430-3540

The BROOKSTONE® trademarks, names and logos are owned by BKST Brand Holdings LLC. 2019 ©. All rights reserved, manufactured, marketed, and distributed by Lifeworks Technology Group LLC, used under license.
Made in China



Safety Warnings and Troubleshooting

⚠ Attention

1. Please keep charger away from water or other liquid
2. If you need to clean the charger, please make sure it is not connected to the power supply
3. Working temperature: -20°~45°C (-4°~113°F)

⚠ When the LED light flashes during the wireless charging, which indicates a charging failure

The following situations can cause failures like high temperature, slow charging and no charging

1. The adapter is not up to standard
2. The charging cable is not up to standard
3. The phone case is too thick (recommended phone case thickness within 2mm)
4. The phone is not placed at the center of the wireless charger
5. There is metal/magnet on the back of cell phone or phone case
6. Cell phones do not support Qi wireless charge function

FCC Warning:

This product is suitable for any car.

Installation environment: Window or Dash Mount

Driver Seat

Knee: 29cm, Leg: 36cm, Body: 74cm, Hand: 45cm, Arm: 62cm, Head: 114cm

Passenger Seat - Front

Knee: 28cm, Leg: 35cm, Body: 75cm, Hand: 46cm, Arm: 61cm, Head: 115cm

⚠ Do Not Attempt Repairs. Do not attempt to take apart, open, repair, service or modify the device(s). Doing so may risk electric shock or other hazard. Evidence of any attempt to open or modify the device, including any peeling, puncture or removal of labels, will void the Limited Lifetime Warranty.

⚠ Warning Improper setup, use and care of this product can increase the risk of serious injury death or device damage. Read and keep this guide and all other printed guides for future reference. For updated guides and replacements go to golifeworks.com

Brookstone®

BRQICM302

WIRELESS CHARGING
CAR MOUNT KIT



Safety Warnings and Legal

FCC Statement

This device complies with part 15 of FCC Rules. Operation is subject to the following two conditions: (1) this device may not cause harmful interference, and (2) this device must accept any interference received, including interference that may cause undesired operation. This equipment has been tested and found to comply with the limits for a Class B digital device, pursuant to part 15 of FCC Rules. These limits are designed to provide reasonable protection against harmful interference when the equipment is operated in a residential installation. This equipment generates, uses, and can radiate radio frequency energy and, if not installed and used in accordance with the instruction guide, may cause harmful interference to radio communications. However, there is no guarantee that interference will not occur in a particular installation. If this equipment does cause harmful interference to radio or television reception, which can be determined by turning the equipment off and on, the user is encouraged to try to correct the interference by one or more of the following measures:

- Reorient or relocate the receiving antenna.
- Increase the separation between the equipment and the receiver.
- Connect the equipment into an outlet on a circuit different from that to which the receiver is connected.
- Consult a service representative for help.

Properly shielded and grounded cables and connectors must be used in order to comply with FCC emission limits. LifeWorks is not responsible for any radio or television interference caused by using other than recommended cables and connectors or by unauthorized changes or modifications to this equipment. Unauthorized changes or modifications could void the user's authority to operate the equipment.

Responsible party:

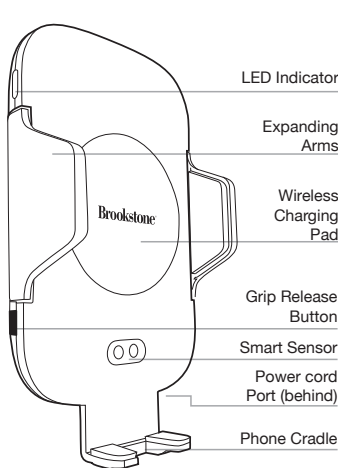
LifeWorks Technology Group LLC
530 7th Ave., New York, NY 10018

Tested To Comply With FCC Standards
FOR HOME OR OFFICE USE

This equipment complies with FCC radiation exposure limits set forth for an uncontrolled environment. This equipment should be installed and operated with minimum distance 0cm between the radiator and your body. This transmitter must not be co-located or operating in conjunction with any other antenna or transmitter.

BACK

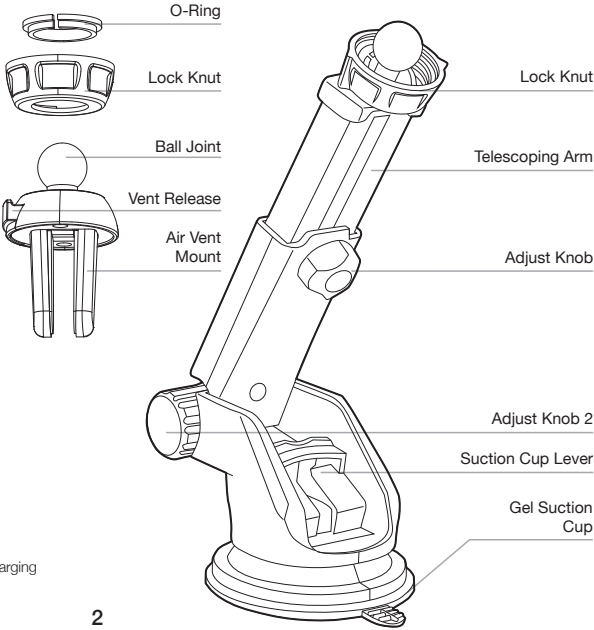
Product Description



Product Specs

COMPATIBILITY: Compatible with all devices with Qi charging
INPUT: 5V=2A/9V=1.67A
OUTPUT: 5V=1.5A/9V=1.2A
CHARGING EFFICIENCY: 75%

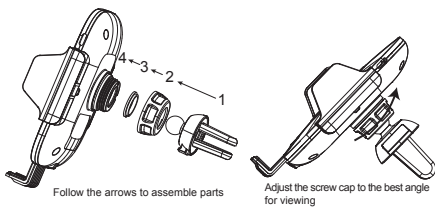
Product Description



Operation

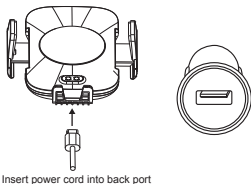
Installation Steps:

1. To attach phone cradle to air vent mount or dashboard mount - (follow steps in image below):
2. Put lock knut over ball joint
3. Gently slip O-Ring over ball joint
4. Put ball joint into back space of phone cradle
5. Screw lock knut onto phone cradle

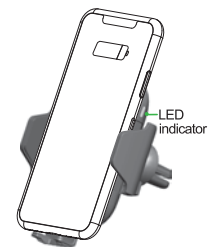


Power:

1. To use wireless charging and smart grip sensor you must connect the wireless charger phone cradle to a power source with included power cable.
2. Must use Qualcomm quick charge adaptor for fast wireless charging.

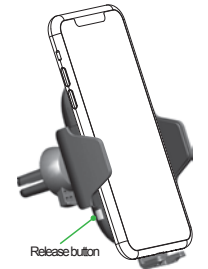


Operation



To Use:

1. Once the power cord is connected, check the LED indicator.
 - Blue light= normal active status
 - Red light flashes= not working
 - No light= no power
2. Place phone in front of sensor- phone grip will automatically open wide
3. Place phone into grip- grip will automatically close



Remove Smartphone:

1. Touch the release button on the side
2. Grip automatically opens and releases phone
3. Take phone out