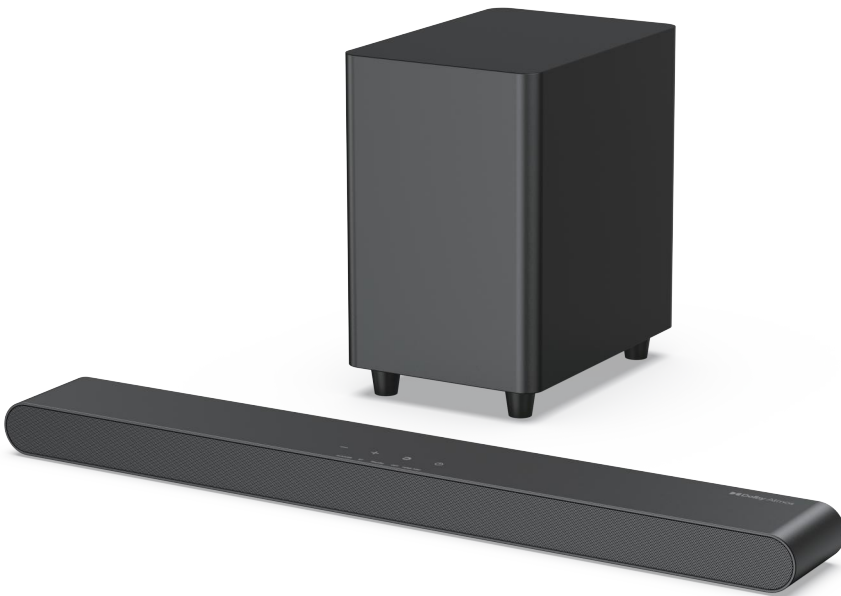


# miroir

 Dolby Atmos

 **HDMI**™  
HIGH DEFINITION MULTIMEDIA INTERFACE

 Bluetooth®



## ***User Manual***

**SL3100**

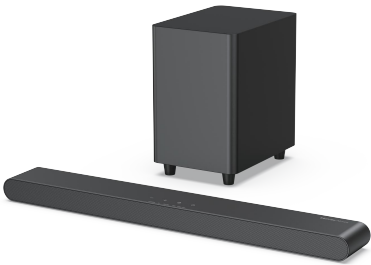
3.1 Channel Dolby Atmos Soundbar

# Contents

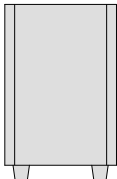
1 ACCESSORIES LIST .....	01
2 SOUNDBAR CONTROLS .....	01
3 CONNECT TO SUBWOOFER .....	02
4 CONNECT TO TV VIA HDMI eARC / ARC .....	03
5 CONNECT TO TV VIA OPTICAL / AUX .....	03
6 CONNECT TO BLUETOOTH® .....	03
7 PLACEMENT OPTIONS .....	04
8 WALL MOUNT INSTALLATION .....	04
9 SPECIFICATIONS .....	04

User Manual

WE ARE  
READY  
TO HELP



1 ACCESSORIES LIST



Subwoofer



Soundbar



Power Adaptor



Stereo 3.5mm to 3.5mm  
Audio Cable



HDMI Cable



HDMI Adaptor



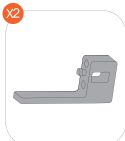
Digital Optical  
Cable



Remote Control



Wall Mounted Kit

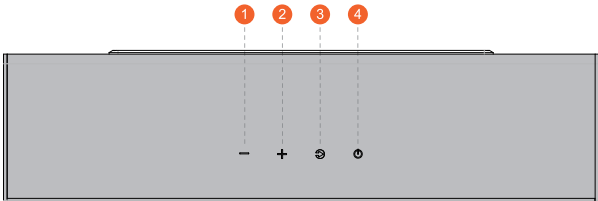


Wall Bracket



User Manual

2 SOUNDBAR CONTROLS

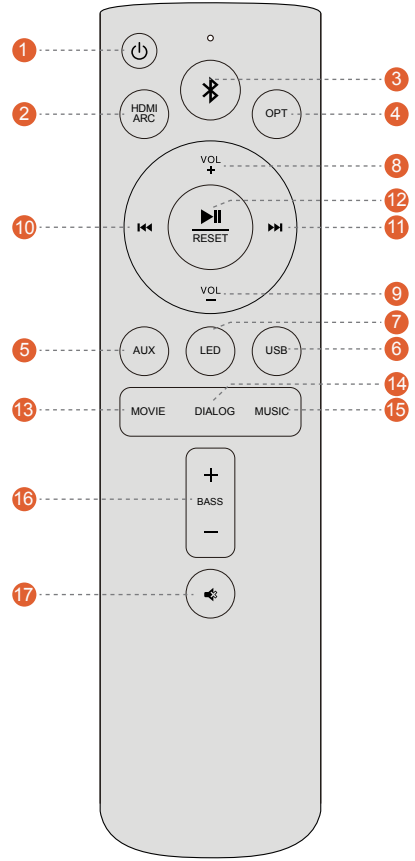


Control Panel

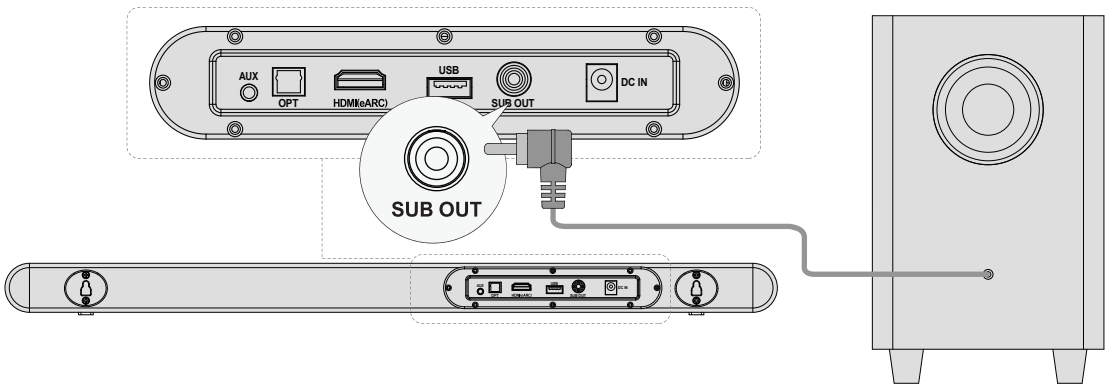
- 1 “-”: **Volume Down**
- 2 “+”: **Volume Up**
- 3 “Input”: **Input Mode**  
Press to switch channels: eARC-OPT-BT-AUX-USB.
- 4 “Power”: **Power Button**  
Press to power on / Hold for 3 seconds to power off.

# Remote Control

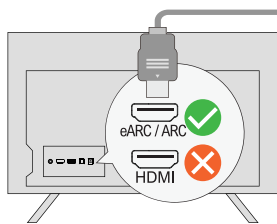
- 1 “ ”: **Power Button**  
Click to turn on or off.
- 2 “ ”: **eARC/ARC**  
Press to switch to HDMI eARC/ARC channel.
- 3 “ ”: **BT**  
Press to switch to Bluetooth channel and enter pairing mode.  
Hold for 3 seconds to disconnect the current device and connect to a new device manually on your mobile phone / PC/TV (BT ID: SL3100).
- 4 “ ”: **OPT**  
Press to switch to OPTICAL channel.
- 5 “ ”: **AUX**  
Press to switch to AUX channel.
- 6 “ ”: **USB**  
Press to switch to USB channel.
- 7 “ ”: **LED**  
Press to turn on the LED. Press again to turn off.
- 8 “ ”: **Volume Up**
- 9 “ ”: **Volume Down**
- 10 “ ”: **Previous**  
For BT and USB mode only: Skip to previous track.
- 11 “ ”: **Next**  
For BT and USB mode only: Skip to next track.
- 12 “ ”: **Play / Pause**  
For BT and USB mode only.  
USB mode: Hold for 3 seconds to switch between single loop playback and list loop playback.
- 13 “ ”: **MOVIE**  
Press to switch to MOVIE mode.
- 14 “ ”: **DIALOG**  
Press to switch to DIALOG mode.
- 15 “ ”: **MUSIC**  
Press to switch to MUSIC mode.
- 16 “ ”: **BASS™**  
Press to adjust bass level.
- 17 “ ”: **Mute / Recover the volume.**



## 3 CONNECT TO SUBWOOFER

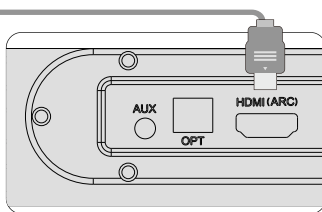


## 4 CONNECT TO TV VIA HDMI eARC / ARC



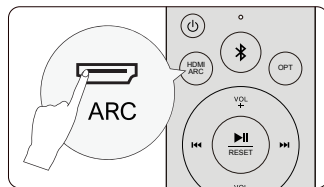
### Step 1:

Connect one end of the HDMI cable to the eARC / ARC port on the back of your TV.



### Step 2:

Then connect the other end to the HDMI(eARC) port of the soundbar.



### Step 3:

Press "ARC" button on the remote control to select "HDMI(eARC)" input.

### Note:

**Make sure your TV HDMI supports eARC, otherwise the Dolby Atmos audio signal cannot be transmitted.**

**Atmos:** If you are watching a movie in the Dolby Atmos format, please set the audio output on your TV to Pass Through:

TV Settings > Home > Settings > Sound > Digital Audio Output > Pass Through

**DTS:** If you are watching a movie in the DTS format, please set the audio output on your TV to PCM:

TV Settings > Home > Settings > Sound > Digital Audio Output > PCM

### What's the difference between: HDMI IN, HDMI ARC, HDMI eARC?

**HDMI IN** is a standard HDMI input that allows you to connect devices to your TV or audio system. It supports audio and video signals, but it does not support audio return channel (ARC) or enhanced audio return channel (eARC) functionality.

**HDMI ARC** is a special HDMI port that supports two-way communication between your TV and audio system. This means that audio can be sent from your TV to your audio system, and audio system can send audio back to your TV.

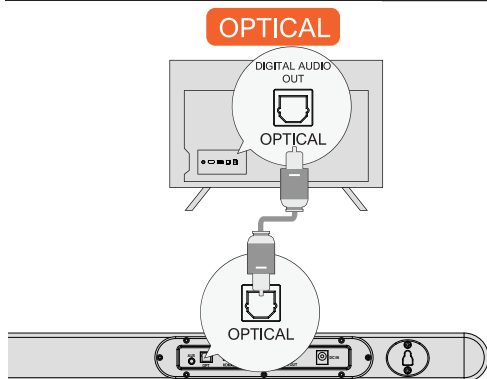
**HDMI eARC** (Enhanced Audio Return Channel) is an updated version of HDMI ARC that supports higher quality audio formats such as Dolby Atmos and DTS:X.

### Note: Please turn on the "CEC" function on your TV.

When eARC / ARC is connected, your TV remote control can control the soundbar and TV simultaneously:

- 1 Turn on / off
- 2 Adjust the volume

## 5 CONNECT TO TV VIA OPTICAL / AUX

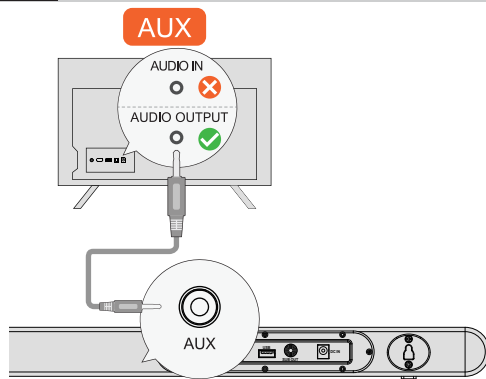


### OPTION 1: OPTICAL

- 1 Make sure the TV's port is OPTICAL OUT, connect both sides of the cable to OPTICAL, for both the TV and the soundbar.

- 2 Make sure the optical plug is inserted correctly as it shows in the picture. Do not insert the plug upside down and break the optical.

**Note:** If audio is playing from the internal TV speakers, mute or minimize the TV volume.



### OPTION 2: AUX

- 1 Connect the 3.5mm to 3.5mm Audio Cable to your TV's AUDIO OUT port.

- 2 Not support AUDIO IN port on TV.

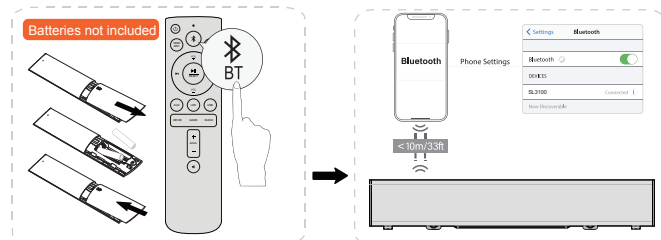
**Note:** Please remember to unplug the AUX cable from TV and Soundbar when you want to switch to other mode.

**In Optical Mode:** If there is no sound, try setting the TV audio output to PCM: TV Settings > Home > Settings > Sound > Digital Audio Output > PCM

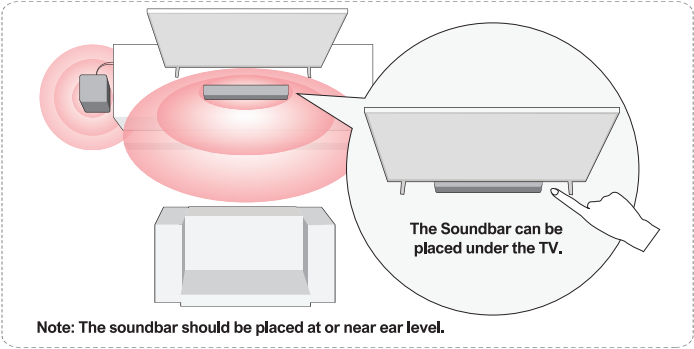
## 6 CONNECT TO BLUETOOTH®

Open your phone's Bluetooth settings, find and select "SL3100" to connect the soundbar.

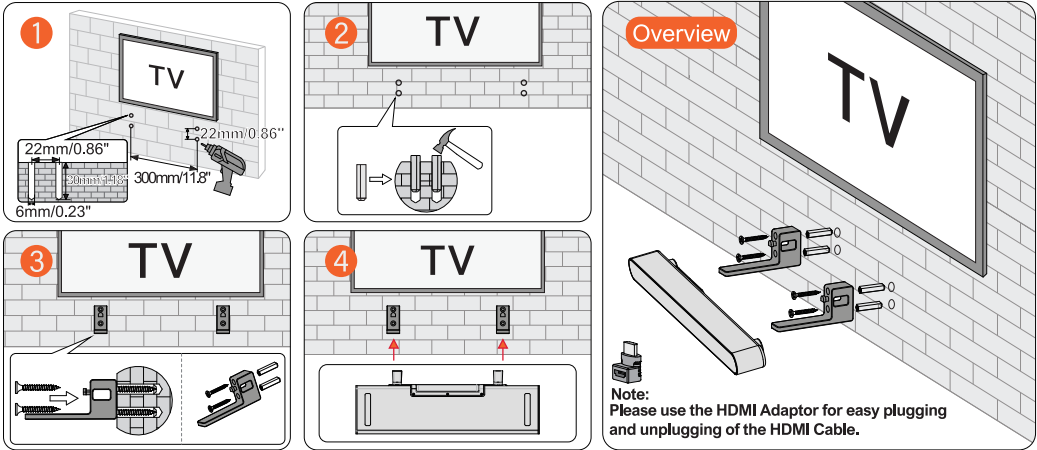
**Note:** If it's already in the Bluetooth mode and connected, press and hold "BT" button for 3 seconds to disconnect the current device and connect to new device manually on your mobile phone / PC / TV.



## 7 PLACEMENT OPTIONS



## 8 WALL MOUNT INSTALLATION



## 9 SPECIFICATIONS

Model Number	SL3100
Power Supply	AC 100-240V
Soundbar Drivers	L/R(70 x 31 x 2pcs) + C(97 x 31 x 1pcs) + SUB Speaker( 5")
Frequency Response	55-20kHz
Standby Power	<0.5W
Operating Temperature	0°C - 45°C / 32°F - 113°F
Bluetooth Vision	5.3

Dimensions and Weight	
Soundbar	624mm(W) x 76mm(H) x 40mm(D)
Subwoofer	170mm(L) x 245mm(H) x 239mm(D)
Packaging	Gift Box(348 x 238 x 690mm)    Outer Carton(498 x 364 x 712mm)
Net Weight	/
Gross Weight	/

Trade Marks:



Dolby, Dolby Atmos, and the double-D symbol are registered trademarks of Dolby Laboratories Licensing Corporation. Manufactured under license from Dolby Laboratories. Confidential unpublished works. Copyright 2012-2021 Dolby Laboratories. All rights reserved.



The Bluetooth® word mark and logos are registered trademarks owned by Bluetooth SIG, Inc. and any use of such marks by Soundlab Technology Co.,Ltd. is under license. Other trademarks and trade names are those of their respective owners.



The Adopted Trademarks HDMI, HDMI High-Definition Multimedia Interface, HDMI trade dress and the HDMI Logos are trademarks or registered trademarks of HDMI Licensing Administrator, Inc. in the United States and other.

## FCC

This equipment has been tested and found to comply with the limits for a Class B digital device, pursuant to Part 15 of the FCC Rules. These limits are designed to provide reasonable protection against harmful interference in a residential installation. This equipment generates uses and can radiate radio frequency energy and, if not installed and used in accordance with the instructions, may cause harmful interference to radio communications. However, there is no guarantee that interference will not occur in a particular installation. If this equipment does cause harmful interference to radio or television reception, which can be determined by turning the equipment off and on, the user is encouraged to try to correct the interference by one or more of the following measures:-- Reorient or relocate the receiving antenna.

- Increase the separation between the equipment and receiver.
- Connect the equipment into an outlet on a circuit different from that to which the receiver is connected.
- Consult the dealer or an experienced radio/TV technician for help.

This device complies with part 15 of the FCC Rules. Operation is subject to the following two conditions:

(1) This device may not cause harmful interference, and (2) this device must accept any interference received, including interference that may cause undesired operation.

Changes or modifications not expressly approved by the party responsible for compliance could void the user's authority to operate the equipment

### **\*RF warning for Mobile device:**

This equipment complies with FCC radiation exposure limits set forth for an uncontrolled environment. This equipment should be installed and operated with minimum distance 20cm between the radiator & your body.

FCC ID : 2ATKO-SL3100