

User manual

(FCC ID: 2ATJO-QAVC100NU)

Contents

I . Specification

1. Facade and Specification

II . General Operation

1. Home

2. Menu

III . Other

1. Facade and Specification

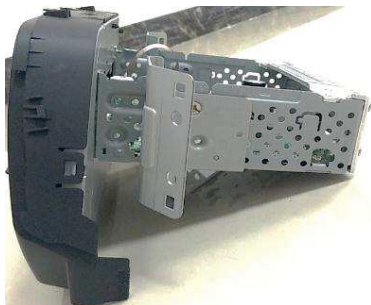


Function

- AM/FM
- Bluetooth
- USB
- i-Pod
- System Language (English)
- AMP

Connectivity products

- Radio Antenna
- Rear Camera
- MIC
- BlueTooth MIC



2.1 Home

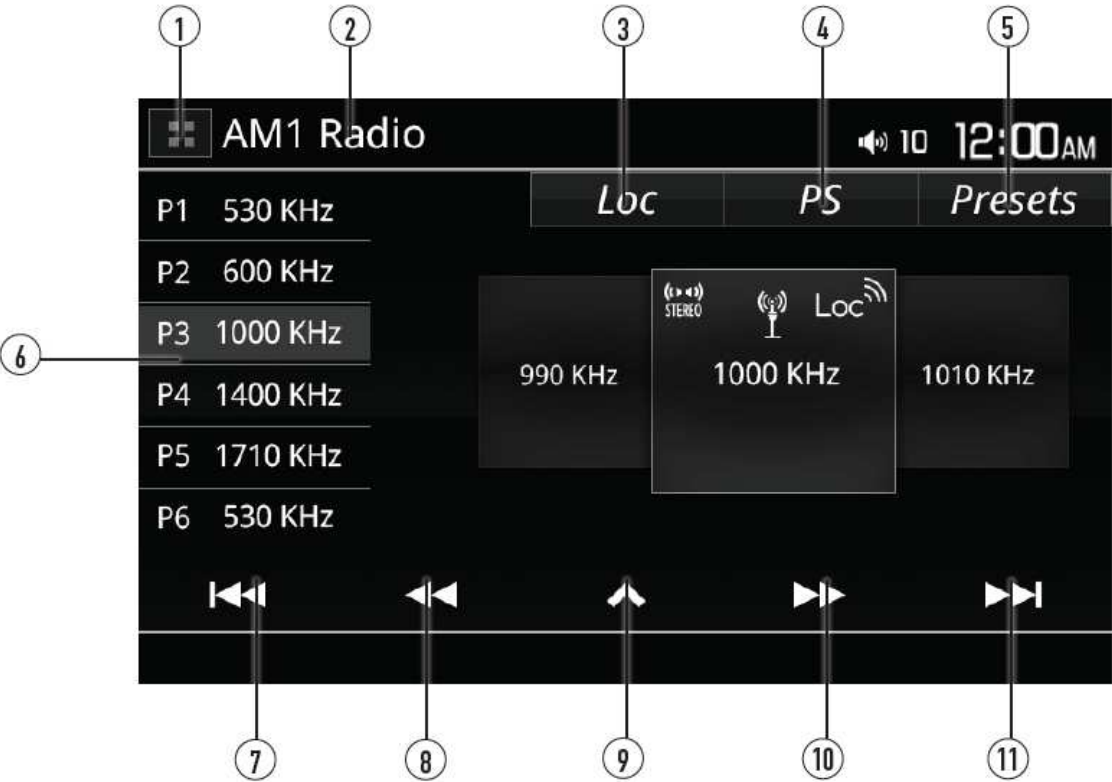


The screenshot shows a 'Settings' menu with a dark background. At the top, there's a status bar with icons for battery, Bluetooth, and volume, along with the time '12:00 AM'. Below the status bar are four tabs: 'System', 'Fader/Balance', 'Equalizer', and 'Surround'. The 'System' tab is selected. The menu items are as follows:

System	Fader/Balance	Equalizer	Surround
Model XDCPA9BT		Time Format 12 Hours	
SW Version V1.00(NS)-V1.000(R)			
BT Version R_0010			
Reboot System			

Navigation arrows are shown: a right arrow from the 'Surround' tab, a right arrow from the 'Time Format' row, a right arrow from the empty row below 'BT Version', and a large downward arrow from the bottom of the menu.

2.2 AM/FM Tuner Operation



- Radio Operation** | Select the Radio icon from the Main Menu screen.
- Main Menu ①** | Press to return to Main Menu screen.
- Current Mode Indicator ②** | Displays current mode of operation.
- Local / Distance ③** | Press to toggle between Local and Distance tuning.
- PS ④** | Press to scan presets and listen to the first 10 seconds of each. Press again to stop scanning and listen to the station.
- Presets List ⑤** | Press to access all preset stations for all AM or FM bands. Use the up and down arrows to navigate the list, and use the "go back" arrow to return to the previous screen.
- Preset Stations ⑥** | To store a station as a preset in the current band, tune to the desired station, then press the desired preset number from the list. Press any preset in the list to recall and begin playback of that station.
- Seek Tune Down ⑦** | Press to automatically tune to a lower frequency.
- Manual Tune Down ⑧** | Press to manually tune to a lower frequency.
- Band / Auto Store ⑨** | Press to toggle between 2 AM and 3 FM bands. Press the search icon to automatically search and store the six strongest stations in the current band as presets.
- Manual Tune Up ⑩** | Press to manually tune to a higher frequency.
- Seek Tune Up ⑪** | Press to automatically tune to a higher frequency.



2.3 USB Operation



USB | To play audio files from a USB device, connect a device to the rear USB cable and playback will begin automatically. To return to USB playback from another mode of operation, select the USB icon in the Main Menu.

Main Menu ① | Press to return to Main Menu screen.

Current Mode Indicator ② | Displays current mode of operation.

List ③ | Press to access a list of all files and folders on the device.
- Press  to access the root directory
- Press a folder name to access that folder, and press  to return to the file list
- Use the up and down arrows to navigate the file list
- Press the "go back" arrow to return to the previous screen.

Repeat ④ | Press to enable or disable repeat playback.

Random ⑤ | Press to enable or disable random playback.

Previous File / Track ⑥ | Press to go back to the previous file or track.

Play / Pause ⑦ | Press to pause or resume playback.

Next File / Track ⑧ | Press to advance to the next file or track.

2.4 Bluetooth Operation



Preparation	Before you can use a Bluetooth device, it must be paired and connected. Make sure that Bluetooth is activated on your device before you begin the pairing process.
Pairing a New Device	The unit broadcasts the pairing signal constantly when no devices are currently connected. Complete the pairing sequence from your Bluetooth device. Refer to the owner's manual for your device for more details. The device name is "XDCPA9BT" . The unit can be in any mode of operation when pairing is performed. On certain phones, pairing may need to be done more than once.
Connecting a Paired Device	Most Bluetooth devices support the auto-connect feature and will connect automatically if the device is in range when the unit is powered-on.
Bluetooth Phone	To access the phone, select Bluetooth Phone from the Main Menu.
Main Menu ①	Press to return to the Main Menu screen.
Current Mode Indicator ②	Displays current mode of operation.
Option ③	Press to display the Option screen. The unit will display the current connection. Press disconnect to disconnect the current connection. A list of all paired devices will also be displayed with the option to delete and change the password for each device.
Recent Calls ④	Press to display names and numbers for recent calls.
Phone Keypad ⑤	Use the keypad to dial a phone number.

2.5 Bluetooth Operation



- | | |
|-------------------------|--|
| Bluetooth Talk ⑥ | Press to connect a call. |
| Bluetooth Music ⑦ | Press to transfer audio between the unit and mobile phone. |
| Backspace ⑧ | When dialing, press to erase the last digit. |
| Clear ⑨ | When dialing, press to clear all digits entered. |
| End Call ⑩ | Press to end a call. |
| Previous File / Track ⑪ | Press to go back to the previous file or track. |
| Play / Pause ⑫ | Press to pause or resume playback. |
| Next File/Track ⑬ | Press to advance to the next file or track. |

2.6 iPod Operation



Connecting an iPod

Connect an iPod to the unit's rear USB input, and the unit will automatically begin iPod playback. To return to iPod playback from another mode of operation, select the iPod icon in the Main Menu.

Note: iPod mode cannot be accessed while the CarPlay feature is enabled. The unit will automatically launch CarPlay, and iPod mode cannot be accessed from the Main Menu.

To disable CarPlay and allow for iPod playback, enter the Settings menu on the iPhone, then select General, then Restrictions. Enable Restrictions if needed, then find CarPlay in the list and click to disable.

Main Menu ①

Press to return to Main Menu screen.

Current Mode Indicator ②

Displays current mode of operation.

Repeat ③

Press to enable or disable repeat playback.

Random ④

Press to enable or disable random playback.

Previous File / Track ⑤

Press to go back to the previous file or track.

Play / Pause ⑥

Press to pause or resume playback.

Next File / Track ⑦

Press to advance to the next file or track.

Safety Information

Please read all instructions carefully before attempting to install or operate.

Due to its technical nature, it is highly recommended that your DUAL XDCPA9BT is installed by a professional installer or an authorized dealer. This product is only for use in vehicles with 12VDC negative ground only.

To prevent damage or injury:

- Make sure to ground the unit securely to the vehicle chassis ground.
- Do not remove the top or bottom covers of the unit.
- Do not install the unit in a spot exposed to direct sunlight or excessive heat or the possibility of water splashing.
- Do not subject the unit to excessive shock.
- When replacing a fuse, only use a new one with the prescribed rating. Using a fuse with the wrong rating may cause the unit to malfunction.
- To prevent short circuits when replacing a fuse, disconnect the wiring harness first.
- Use only the provided hardware and wire harness.
- You cannot view video while the vehicle is moving. Find a safe place to park and engage the parking brake.
- If you experience problems during installation, consult your nearest DUAL dealer.
- If the unit malfunctions, reset the unit as described on page 10 first. If the problem still persists, consult your nearest DUAL dealer or call tech assistance @ 1-866-382-5476.
- To clean the monitor, wipe only with a dry silicone cloth or soft cloth. Do not use a stiff cloth, or volatile solvents such as paint thinner and alcohol. They can scratch the surface of the panel and/or remove the printing.
- When the temperature of the unit falls (as in winter), the liquid crystal inside the screen will become darker than usual. Normal brightness will return after using the monitor for a while.
- When extending the ignition, battery or ground cables, make sure to use automotive-grade cables or other cables with an area of 0.75mm (AWG 18) or more to prevent voltage drops.
- Do not touch the liquid crystal fluid if the LCD is damaged or broken. The liquid crystal fluid may be hazardous to your health or fatal. If the liquid crystal fluid from the LCD contacts your body or clothing, wash it off with soap immediately.

FCC Compliance

This equipment has been tested and found to comply with the limits for a Class B digital device, pursuant to Part 15 of the FCC Rules. These limits are designed to provide reasonable protection against harmful interference in a residential installation. This equipment generates, uses and can radiate radio frequency energy and, if not installed and used in accordance with the instructions, may cause harmful interference to radio communications. However, there is no guarantee that interference will not occur in a particular installation. If this equipment does cause harmful interference to radio or television reception, which can be determined by turning the equipment off and on, the user is encouraged to try to correct the interference by one or more of the following measures:

- Reorient or relocate the receiving antenna.
- Increase the separation between the equipment and receiver.
- Connect the equipment into an outlet on a circuit different from that to which the receiver is connected.
- Consult the dealer or an experienced radio/TV technician for help.

To assure continued operation, follow the attached installation instructions and use only shield cables when connecting to other devices. Changes or modifications not expressly approved by the party responsible for compliance could void the user's authority to operate the equipment.

The equipment complies with FCC radiation exposure limits set forth for an uncontrolled environment. The equipment should be installed and operated with minimum distance 20cm between the radiator & your body.