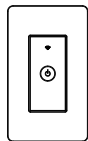
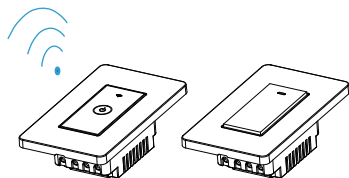
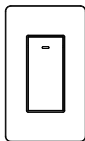


## Smart Wi-Fi Wall Switch User Guide

Model No.: X801S



X801T



X801S

### Product Features

**Standard:** US Switch  
**Panel Material:** Toughened Glass /Mechanical Button  
**Enclosure Material:** Fire Retardant ABS V0+  
**Control Method:** APP / Touch / Button  
**Supports APP:** IOS / Android System

### Technical Parameters

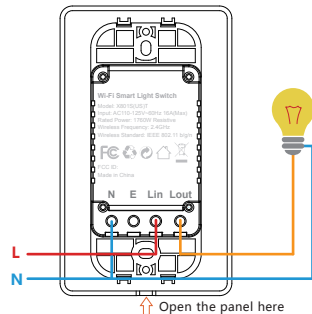
**Input:** AC110-125V~60Hz 16A(Max)  
**Rated Power:**  
1760W Resistive  
**Dimensions(WxDxH):**  
118 x 70 x 40 mm  
4.6 x 2.8 x 1.6 in  
**Wireless Standard:**  
IEEE 802.11 b/g/n, 2.4GHz

FC RoHS



### Installation

1. Before installing the switch, make sure you have totally 100% cut off the power supply.
2. After connecting the wires, please use a screwdriver to open the panel. Then use two screws to fix the back enclosure into the wall box and close the panel.

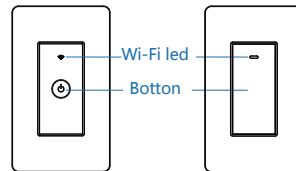


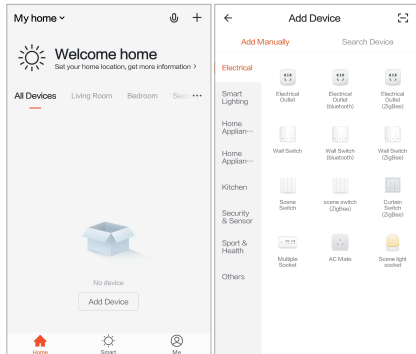
### Add Device

1. Scan the following QR Code or search "Smart Life" in APP Store or Google Play.



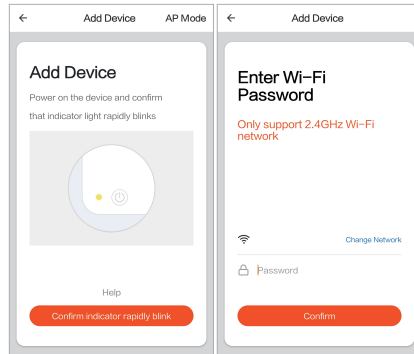
2. Power up the wall switch, Then Press the button for 5 seconds until the Wi-Fi led fast blinks to enter into Wi-Fi pairing status.





3. Go to Smart Life, Tap the icon "+" on the top right or tap the "Add Device" button.

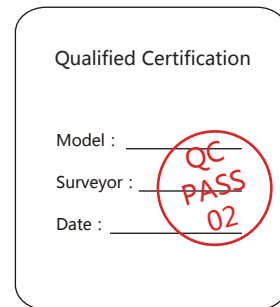
4. Tap "Electrical" - "Wall Switch" Enter into "Add Device".



4. Tap the related button in application, choose the local Wi-Fi and Input SSID & password. If no password, keep it blank, then tap "Confirm".

5. Wait for configuring successfully, then tap "Complete".

## Certification



## Warranty Card

**Warranty card**

Name : \_\_\_\_\_

Email : \_\_\_\_\_

Issue : \_\_\_\_\_

\_\_\_\_\_

FCC ID: 2ATGX-X801S

Changes or modifications not expressly approved by the party responsible for compliance could void the user's authority to operate the equipment.

This device complies with Part 15 of the FCC Rules. Operation is subject to the following two conditions: (1) this device may not cause harmful interference, and (2) this device must accept any interference received, including interference that may cause undesired operation.

This equipment has been tested and found to comply with the limits for a Class B digital device, pursuant to Part 15 of the FCC Rules. These limits are designed to provide reasonable protection against harmful interference in a residential installation. This equipment generates, uses and can radiate radio frequency energy and, if not installed and used in accordance with the instructions, may cause harmful interference to radio communications. However, there is no guarantee that interference will not occur in a particular installation.

If this equipment does cause harmful interference to radio or television reception, which can be determined by turning the equipment off and on, the user is encouraged to try to correct the interference by one or more of the following measures:

- Reorient or relocate the receiving antenna.
- Increase the separation between the equipment and receiver.
- Connect the equipment into an outlet on a circuit different from that to which the receiver is connected.
- Consult the dealer or an experienced radio/TV technician for help.

This equipment complies with FCC radiation exposure limits set forth for an uncontrolled environment. This equipment should be installed and operated with a minimum distance of 20cm between the radiator & your body. This transmitter must not be co-located or operating in conjunction with any other antenna or transmitter.