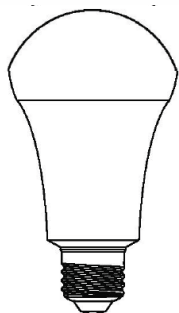


LED LAMP



Model:WZ-SWQT01-07-001

Wi-Fi Smart Bulb User Manual

1.Features



Control via Smart phone(Android & IOS), you can control your light anywhere;



Voice control: Compatible with Alexa family and Google home



Timer function: Automatic on/off with timer function



16+ millions different color changeable



Brightness 1~100% dimmable



Smart scene and Group control

2.Parameters

Product	WiFi Smart Light
Input	AC100~240V 50/60Hz
Color	RGB+W(2700K/3000K /4000K/6000K)
Wireless Type	Wi-Fi 2.4GHz
Wireless standard	IEEE 802.11 b/g/n

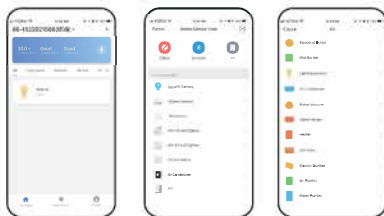
3.APP Download And Register

Download the APP "Smart Life" from APP Store(for IOS) and Google play store(for Android), and register with phone number/email/Social Media Account;



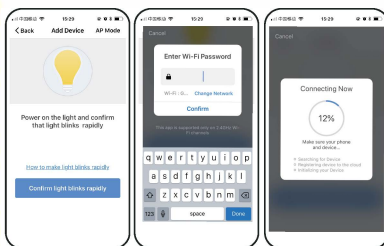
4.Connect Smart Lights And Phone

Step 1. Open APP "Smart Life"--- press " Add Device"--- press "All" button--- select "Lighting Devices", then enter the add Device page.



Step 2. Power your smart lights on, light will blink rapidly, if not blink, please reset your smart lights;

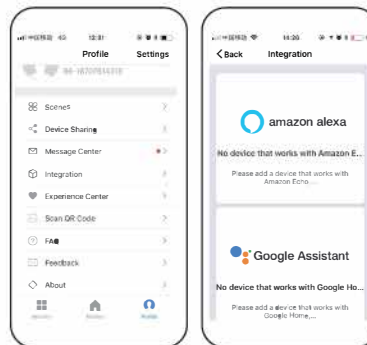
PS: Reset process: Power off 10s and then power on, turn on-off-on-off-on, light will rapidly blink



Step 3. Confirm light blinks rapidly--- Enter Wi-Fi password to connect with lights.

5.Setting Bulbs Controlled By Alexa/ Google Home

APP "Profile"---"Settings"---"Integration"--- Press "Amazon Alexa" or "Google Assistant" --- following the instructions;



6.Important Cautions

- 1.Indoor use only, do not expose the bulb to water or moisture;
- 2.Do not expose to flammable sources, liquids or gases;
- 3.Do not open the equipment and do not modify the unit;
- 4.Make sure that the available voltage is between 100~240V,50/60Hz;
- 5.The Bulb is not suitable for use with dimmers;
- 6.Do not switch the bulb on and off in short intervals, as this will reduce the bulb's life.
- 7.If the bulb is dropped or damaged, disconnect the mains power supply immediately and have qualified engineer inspect the equipment before operating again.

Changes or modifications not expressly approved by the party responsible for compliance could void the user's authority to operate the equipment.

This device complies with Part 15 of the FCC Rules. Operation is subject to the following two conditions: (1) this device may not cause harmful interference, and (2) this device must accept any interference received, including interference that may cause undesired operation.

This equipment has been tested and found to comply with the limits for a Class B digital device, pursuant to Part 15 of the FCC Rules. These limits are designed to provide reasonable protection against harmful interference in a residential installation. This equipment generates, uses and can radiate radio frequency energy and, if not installed and used in accordance with the instructions, may cause harmful interference to radio communications. However, there is no guarantee that interference will not occur in a particular installation.

If this equipment does cause harmful interference to radio or television reception, which can be determined by turning the equipment off and on, the user is encouraged to try to correct the interference by one or more of the following measures:

- Reorient or relocate the receiving antenna.
- Increase the separation between the equipment and receiver.
- Connect the equipment into an outlet on a circuit different from that to which the receiver is connected.
- Consult the dealer or an experienced radio/TV technician for help.

This equipment complies with FCC radiation exposure limits set forth for an uncontrolled environment. This equipment should be installed and operated with a minimum distance of 20cm between the radiator & your body. This transmitter must not be co-located or operating in conjunction with any other antenna or transmitter.