

## DC Sport Smart Sports Insoles

### User Manual

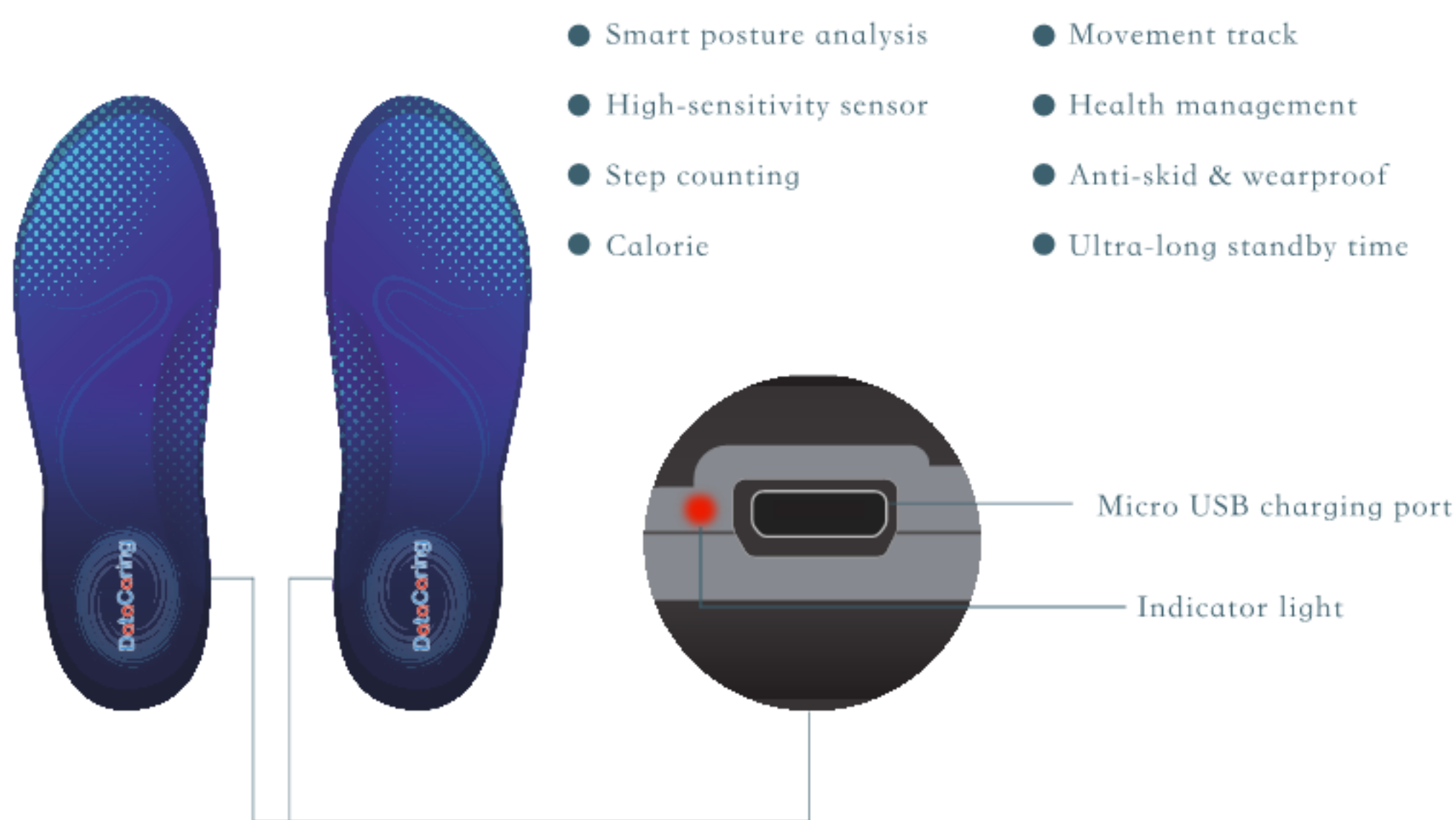
## Catalogue

Introduction.....	
Description.....	
User Guide.....	
Specification.....	
Matters needing attention .....	
FAQs & Solutions.....	
Warranty Card.....	

### Introduction

Based on traditional insoles, DC Sport is a kind of smart sports insoles being independently researched and developed by our company. By integrating superior craft of traditional insoles, it's created by adopting modern science and technology such as wireless Bluetooth, precision sensor and high-capacity battery, etc. It aims to forecast the risk caused by improper walking posture through scientific way, thus providing excellent sports experience for you

### Description



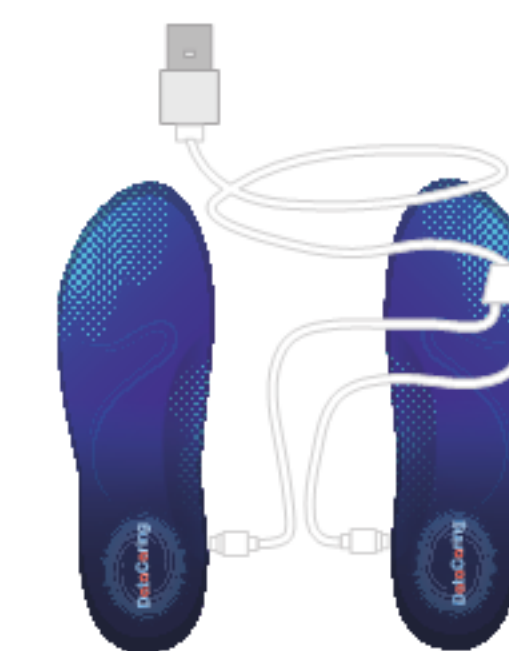
### User Guide

#### 1.Install APP



Scan QR code to download and install APP

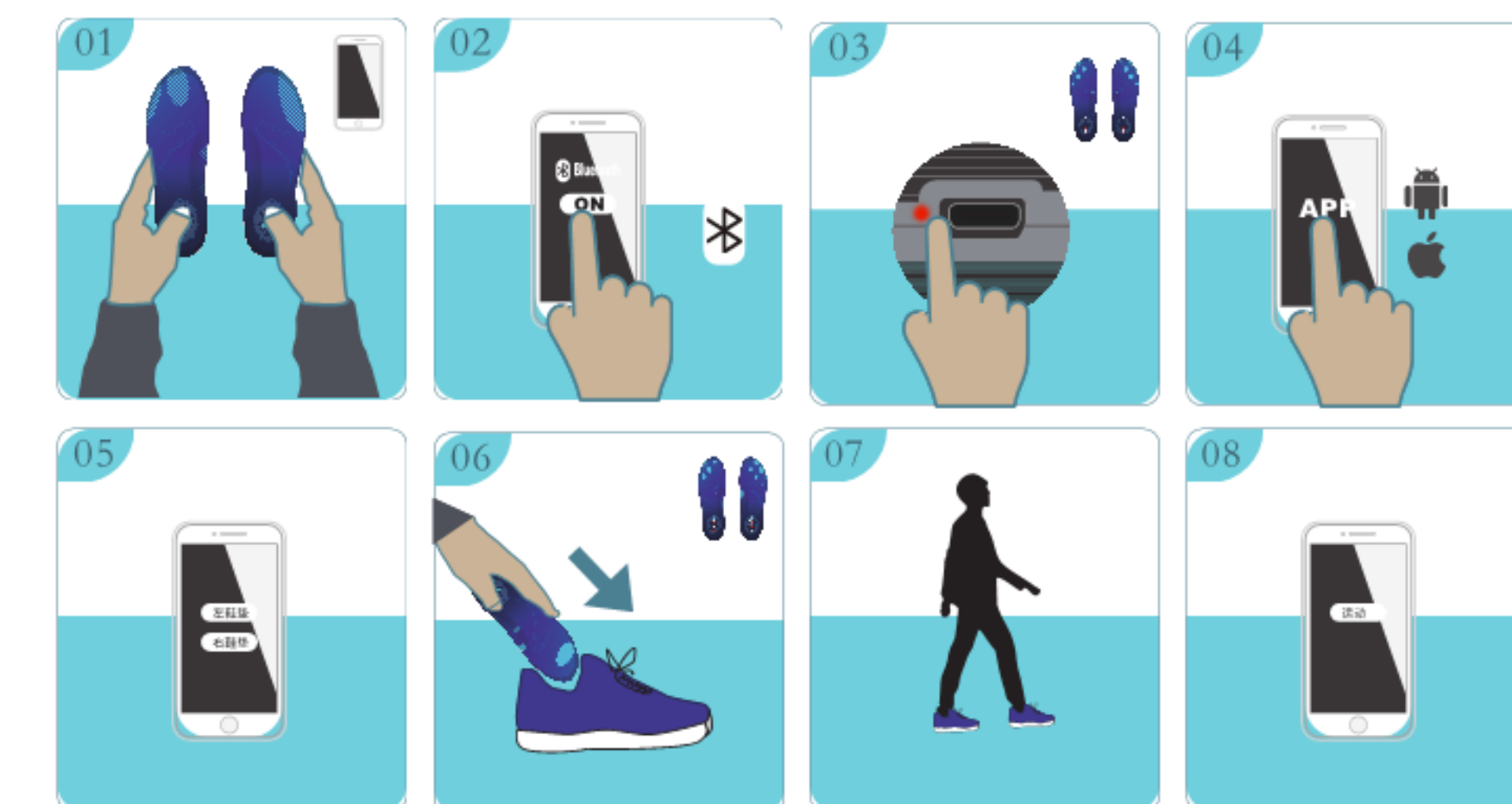
### 2.Charging description



Light status	Indication
Red light flickers rapidly	Being charged
Red light for one second	Finish charging
Blue light is normally on	Normal working

### 3. Instructions

- ①Install APP, register and login, put the mobile near to insoles
- ②Open mobile Bluetooth as per prompt message of APP
- ③For the first time of using, charge insoles for activation
- ④Connect to insoles for binding as per prompt message of APP
- ⑤After binding successfully, enter function interface of APP
- ⑥Put insoles being bound in shoes
- ⑦Click start sports on home page to record sports
- ⑧Explore more functions



### Specification

Product model	DC Sport	Charging way	Micro USB
Input power	5V 0.5A	Power supply mode	Polymer lithium battery
Charging time	3h	Working temp.	-20℃ ~70℃
Working time	About 25 days	Standby time	3 months
Bluetooth distance	3m		

### Precautions

- Please read the precautions carefully before using the product. The manufacturer assumes no liability for the consequences caused by improper use
- ①Please do not expose the product in the rain or under humid environment for a long time
  - ②Please do not scrub the product with chemical solvent
  - ③Please do not expose the product under ultra-high or ultra-low temperature environment for a long time
  - ④Please do not throw the product into fire to prevent accident
  - ⑤Please charge the product once every two months if not using for a long time

### FAQs & Solutions

- If any problems while using the product, please refer to below solutions:
1. Fail to connect with Bluetooth
    - ①Restart mobile or restart mobile Bluetooth
    - ②Check if the product is fully charged
  2. The product has been bound
    - ①On the APP where the product has been bound, click unbind and bind again
    - ②After connecting USB cable to power, plug in and pull out successively for three times, bind again
  3. Charging light is off
    - ①Check if USB cable is properly connected with power and insoles
    - ②Disconnect power after connecting USB cable to power for charging for above two hours, reconnect with power and check if the status returns to normal

## Warranty Card

- 1.Warranty service comes into effect automatically within the date of purchase. Within guarantee period, the customer can enjoy free warranty service for three months if any non-human fault or damage under the premise of normal use. For the maintenance beyond guarantee period, the customer needs to pay certain maintenance costs and transportation expenses.
- 2.The warranty card should be filled in manually while purchasing the product. The warranty card will become invalid without maintenance seal of our company and please carry with this warranty card for product maintenance.

Customer name	Date of purchase	Product model	Agent
Maintenance record:			

Shenzhen Datacaring Technology.,Ltd.  
E-mail: support@datacaring.com  
Website: www.datacaring.com



## FCC Statement

1. This device complies with Part 15 of the FCC Rules. Operation is subject to the following two conditions:

(1) This device may not cause harmful interference.

(2) This device must accept any interference received, including interference that may cause undesired operation.

2. Changes or modifications not expressly approved by the party responsible for compliance could void the user's authority to operate the equipment.

NOTE:

This equipment has been tested and found to comply with the limits for a Class B digital device, pursuant to Part 15 of the FCC Rules.

These limits are designed to provide reasonable protection against harmful interference in a residential installation.

This equipment generates uses and can radiate radio frequency energy and, if not installed and used in accordance with the instructions, may cause harmful interference to radio communications. However, there is no guarantee that interference will not occur in a particular installation. If this equipment does cause harmful interference to radio or television reception, which can be determined by turning the equipment off and on, the user is encouraged to try to correct the interference by one or more of the following measures:

Reorient or relocate the receiving antenna.

Increase the separation between the equipment and receiver.

Connect the equipment into an outlet on a circuit different from that to which the receiver is connected.

Consult the dealer or an experienced radio/TV technician for help.

### FCC Radiation Exposure Statement

This equipment complies with FCC radiation exposure limits set forth for an uncontrolled environment.