

Document ID	<a href="https://docs.google.com/document/d/1cpJu_uuxLkUJgIMcZ90O8GDdyDoyagPU/">https://docs.google.com/document/d/1cpJu_uuxLkUJgIMcZ90O8GDdyDoyagPU/</a>
Responsible	Oystein Moldsvor
Classification	Confidential

Revision History Table		
Named revision	Date	Comment:
01	2024-01-04	First version

# Internal Photos

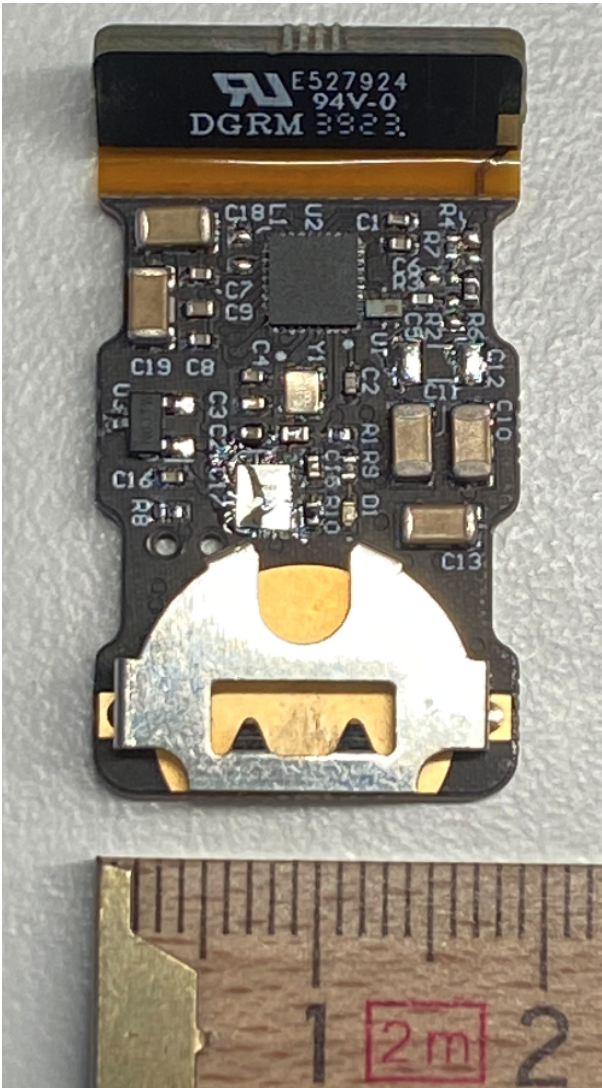


Figure 1: Picture of the component side of the assembled PCB inside 102737 - Door and Window Sensor US. The antenna is at the top of the picture.

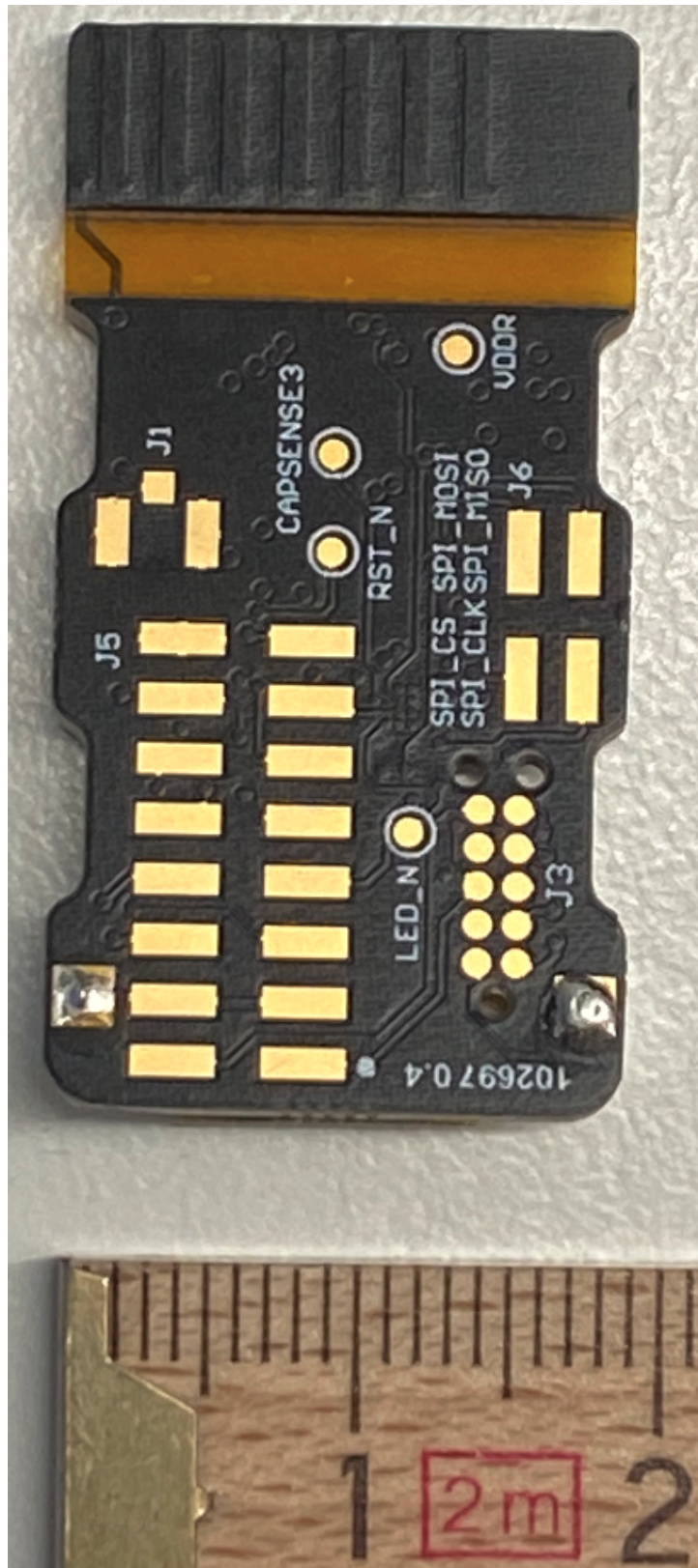


Figure 2: Picture of the back side of the PCB 102737 - Door and Window Sensor US. The antenna is at the top of the picture.

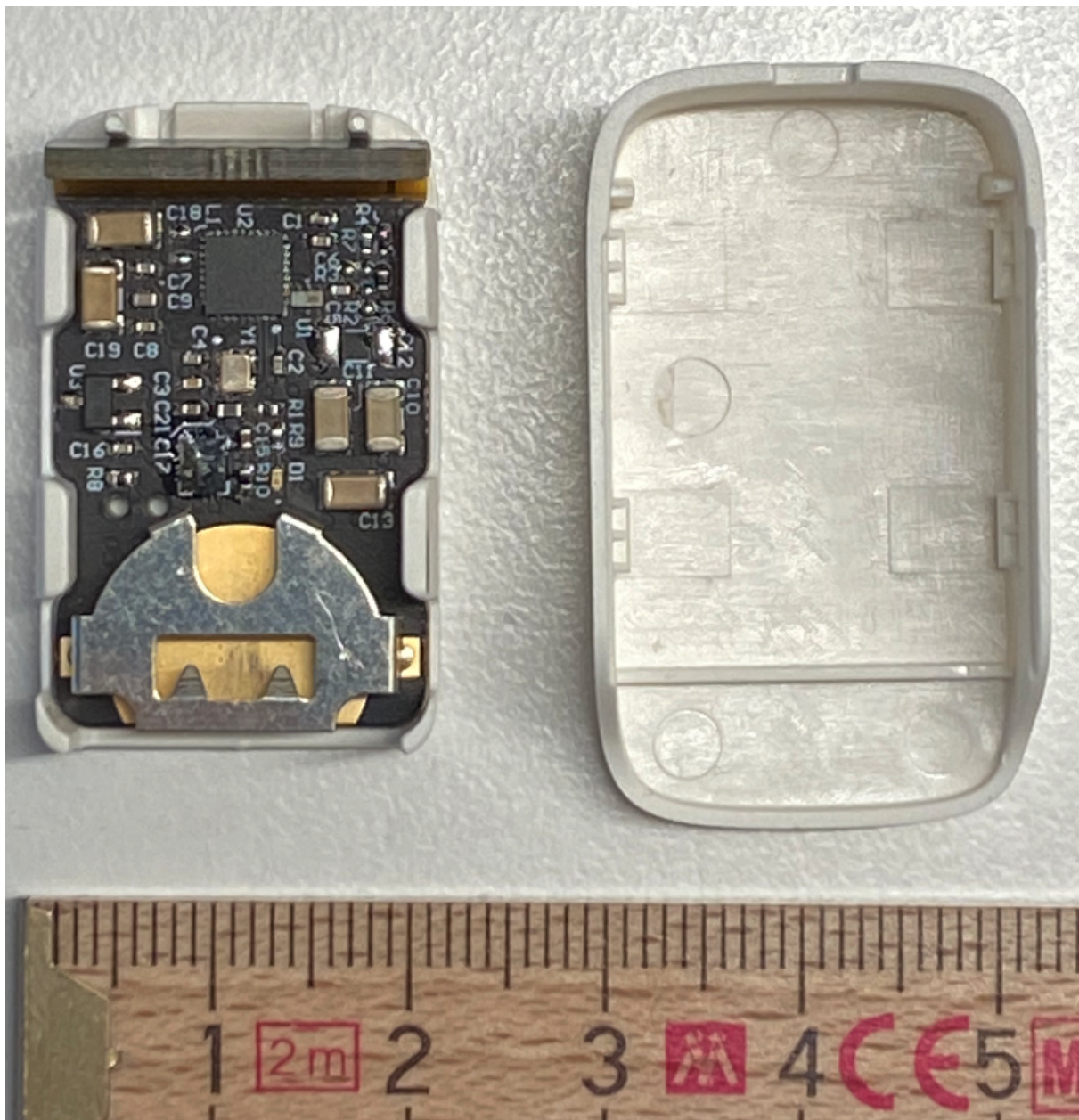


Figure 3: The assembled PCB placed inside the plastic enclosure. There are guides for the antenna to keep it in place inside the enclosure. The lid (right) can be turned and snapped on top of the assembly to the left.