



Hear the Difference



D1090

Multimedia Speaker System

HiVi USA HiVi Acoustics, Inc
87N. Raymond Ave, Suite 917, Pasadena, CA 91103, U.S.A
Website: <https://swanspeakers.com>
Facebook Page: www.facebook.com/swansspeakers/
E-mail: info@swanspeakers.com
Made in China HiVi Acoustics Technology Co., Ltd
No. 13 Sansha Rd, Dongchong Town, Nansha District, Guangzhou, P.R.China 511453

Product information contained here is only for reference. Actual product is subject to change without notice due to product enhancement.

IMPORTANT SAFETY INSTRUCTIONS

WARNING

To reduce the risk of fire or electric shock, do not expose this apparatus to rain or moisture.



The lightning flash is intended to alert you to the presence of uninsulated “dangerous voltage” within the product’s enclosure, which may cause an electric shock to people.

The exclamation point is intended to remind you of the presence of important operating and maintenance (servicing) instructions in the user manual.

Do read carefully all safety cautions and instructions before connection or use. Please keep this manual for future reference.

Please install or place this device in a dry and well-ventilated area.

Don't place the device near water, such as bathtubs, washbasin, sinks, washing machines, damp basements, swimming pools, etc.

Don't place the device in the area, which may block up the vents of it. For instance, don't put it in a bookshelf or drawer, don't put it on textiles either, like a blanket.

This product should be operated only with proper, steady voltage indicated on the back panel. The power cord should be protected from trampling and piercing, especially its plug, and the junction which combine the plug and cable.

Make sure it's disconnected before cleaning.

Cleaning with the methods recommended only.

Please unplug the power cable from the electrical outlet when not using the device for a long time.

Once a failure occurs, please send your device to a qualified Repair Centre:

- A. Power cord or plug is damaged.
- B. Solid object or liquid fall into the cabinet.
- C. This product is exposed to rain or other liquids.
- D. This product couldn't work normally or perform poorly.
- E. This product dropped or caused an enclosure damage.

Don't try to repair this product by yourself. It must be repaired by a professional.

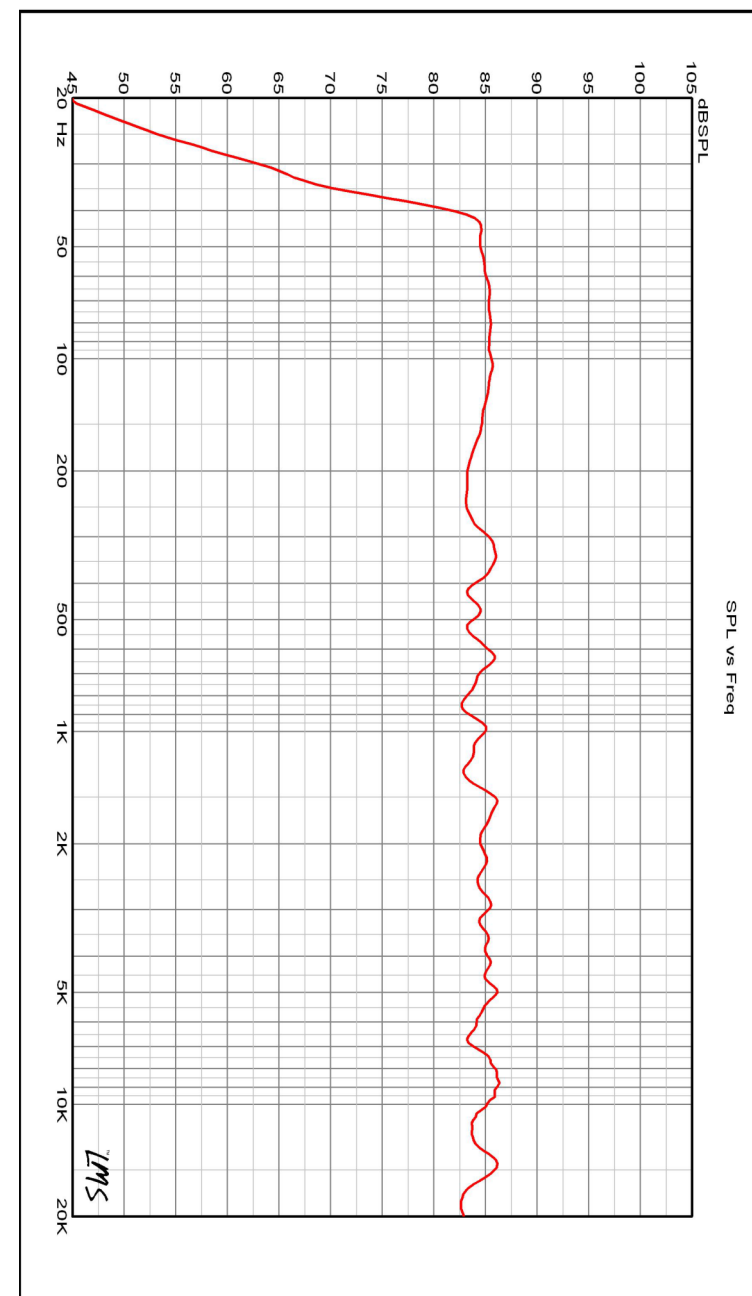
CAUTION

To reduce the risk of electric shock, the power plug must be inserted into an AC outlet completely.

The product doesn't come with any parts or components, which can be repaired by users. To disconnect the cord, pull the cord by grasping the plug. Never pull the cord itself. Never overload an electrical socket, otherwise it may lead to fires or electric shocks.

Please be careful when you use a trolley to move this device, it will be damaged if a fall happens.

Only original parts and parts which have the same parameter as original parts are allowed for maintenance work. A fire, an electric shock or other dangerous accidents will occur



XI. The Content of Harmful Poisonous Substance



The icon means the device contains harmful substance, which can be safely used within 10 years (calculated from the production date). It should be delivered to the circulation after the expiration date.

Part Name	Harmful Poisonous Substance					
	(Pb)	(Hg)	(Cd)	(Cr (VI))	(PBB)	(PBDE)
Cable	X	O	O	O	O	O
Metal Parts	O	O	O	O	O	O
Wooden Parts	X	X	X	X	X	X
Plastic Parts	O	O	O	O	O	O
Circuit Board Assembly	X	O	O	O	O	O
Transformer	O	O	O	O	O	O
Drivers	O	O	O	O	O	O
Packaging Materials	O	O	O	O	O	O

Above form is generated according to SJ/T 11364.

O: The content of the certain harmful substance is lower than the criteria set by GB/T 26572

X: The content of the certain harmful substance goes beyond the criteria set by GB/T 26572

Note: The environmental protection use period depends on working conditions, such as temperature, air humidity, etc.

XII. Repairs

Please contact the seller if the machine failures still can't be eliminated after trying above instructions.

if unapproved parts are used in repairing.

Please make sure a proper, steady voltage before connection.

Warning: It's dangerous to insert the plug, which has the bare wires, into the AC outlet.

DECLARATION

This package doesn't contain any components which can be used in repairing. Please follow the instruction in this user manual or go to a professional service center for help if any defects. Please do not try to open the enclosure and repair this device by yourself. The manufacturer has no responsibility for any improper operations.

NOTE: This equipment has been tested and found to comply with the limits for a Class B digital device, pursuant to part 15 of the FCC Rules. These limits are designed to provide reasonable protection against harmful interference in a residential installation. This equipment generates uses and can radiate radio frequency energy and, if not installed and used in accordance with the instructions, may cause harmful interference to radio communications. However, there is no guarantee that interference will not occur in a particular installation. If this equipment does cause harmful interference to radio or television reception, which can be determined by turning the equipment off and on, the user is encouraged to try to correct the interference by one or more of the following measures:

- Reorient or relocate the receiving antenna.
- Increase the separation between the equipment and receiver.
- Connect the equipment into an outlet on a circuit different from that to which the receiver is connected.
- Consult the dealer or an experienced radio/TV technician for help

Changes or modifications not expressly approved by the party responsible for compliance could void the user's authority to operate the equipment.

This device complies with Part 15 of the FCC Rules. Operation is subject to the following two conditions:

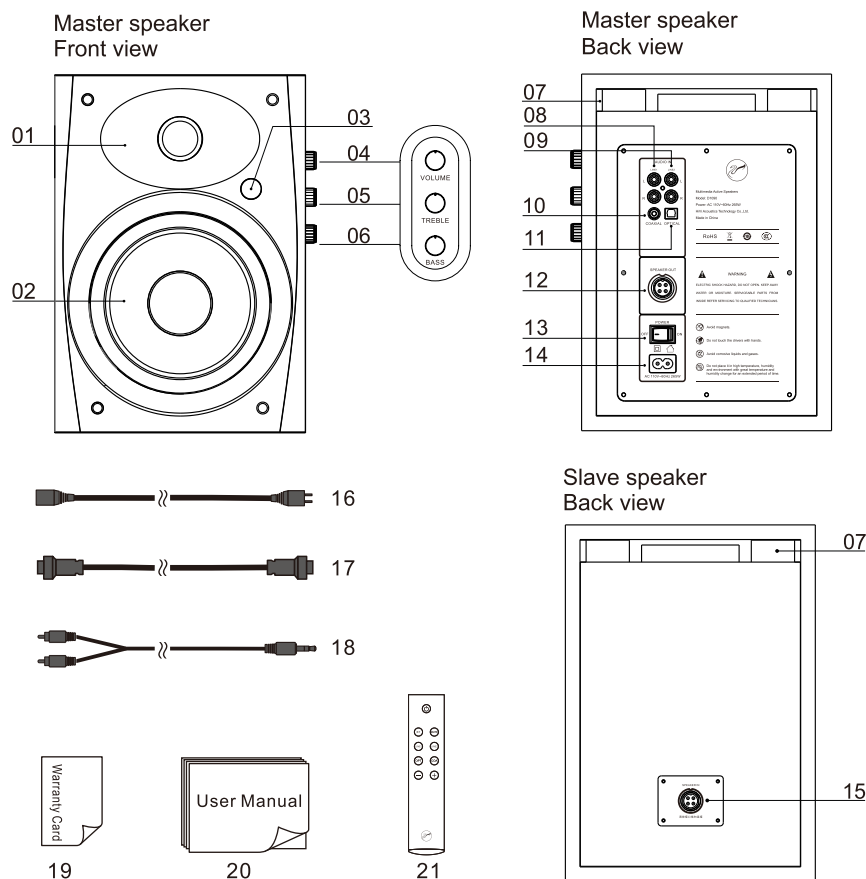
- (1) this device may not cause harmful interference, and (2) this device must accept any interference received, including interference that may cause undesired operation.

I . Unpacking

To ensure good condition on arrival, the device is packed well in strong export carton. Please check if accessories are complete when you open package.

- ✔ Master Speaker x 1 ✔ Slave Speaker x 1 ✔ Power Cord x 1
- ✔ RCA to 3.5mm Audio Cable x 1 ✔ Connection Cable x 1 ✔ Remote x 1
- ✔ User Manual, Warranty Card, Product Certificate x 1

II . Schematic Diagram



X . Specifications

Model	D1090
Series	DSP 2.0 Channel Multimedia Speaker System
System Type	Two-way 4th-order vented speaker system
Drivers Configuration	6.5"Midbass,28mm Soft Dome Tweeter
Frequency Range	38Hz - 20kHz
Harmonic Distortion	80Hz - 20kHz $\leq 1\%$ (85dB/1m)
Audio Input	Aux, Bluetooth, Optical, Coaxial
Rated Power	RMS 110W x 2
Active Crossover Frequency	2.7kHz
Bass Adjust	$\pm 3\text{dB}$
Treble Adjust	$\pm 3\text{dB}$
Separation	$\geq 72\text{dB}$
Signal-to-Noise	$\geq 107\text{dB}$
Input Sensitivity	160mV
Input Impedance	13k Ω
Maximum Input	3000mV
Finish	Unique panel design, Wood grain cabinet, Jacquard net-cover
Dimensions(WXDxH)	214×328×295mm
Net Weight(each)	Master speaker: 10.2kg Slave speaker: 7.2kg

IX. Common Failure and Regular Maintenance

1. Poor Sound Quality

- Check that all drivers are working.
- Check that audio cables are firmly connected at both ends.
- Check that satellite speakers are well connected with subwoofer.

2. No Sound

- Check that the machine power switch is turned on.
- Check if any damage or short circuit of cable connecting speakers and audio source.
- Check that the driver of sound card is installed properly.
- Check that the volume is not on minimum.

3. Only One Speaker Works

- Check that the sound balance controller of your computer is in the middle position.
- Check that audio cables are firmly connected.

4. Tips for Maintenance

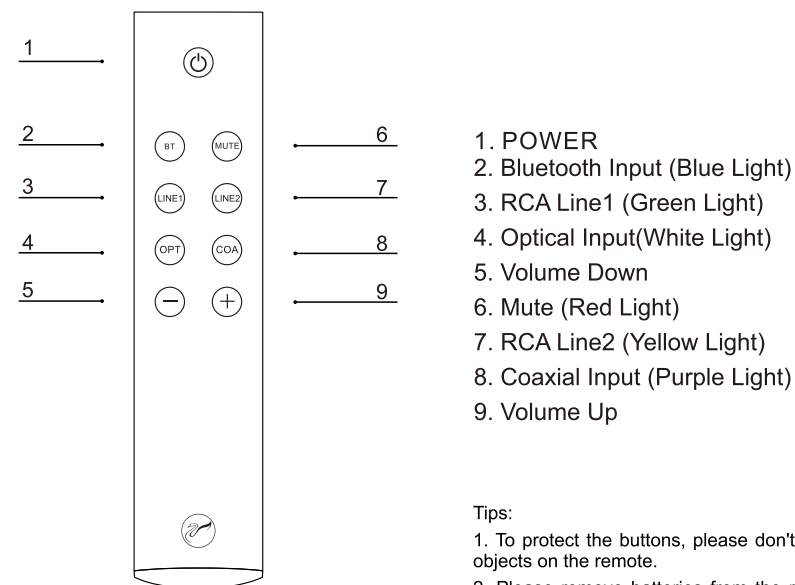
- Turn off the power supply when not in use for a long time.
- Do not open the cabinet, prevent the accident of electric shock.
- To protect your hearing and the device, please play music with suitable volume.

01. Tweeter	08. RCA Line 1	15. Input
02. Woofer	09. RCA Line 2	16. Power Cord
03. Indicator Light & Receiver	10. Coaxial	17. Connection Cable
04. Volume Control	11. Optical	18. RCA to 3.5mm Audio Cable
05. Tweeter Control	12. Output	19. Warranty Card
06. Woofer Control	13. Power Switch	20. User Manual
07. Phase Tube	14. Power Socket	21. Remote

Functions of Volume Control/Input

- Press and switch into audio input modes. Press in turn. Color of indicator light which stands for different modes will change accordingly. Please select the mode based on personal preferences.
- When the device is mute state, turn the volume control and unmute.

III. Remote:



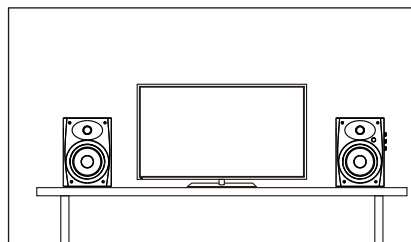
Tips:

- To protect the buttons, please don't place any heavy objects on the remote.
- Please remove batteries from the remote, if it is not used for a long time.
- Please place it in a cool, dry place.

IV. Placement

1. How to place the device

Place speakers on the left and right respectively, proper distance between two speakers is 50~100cm, which helps create a real, natural sound field. To adjust the distance of placement and angle, you will get a satisfactory stereo effect.



2. How to get an ideal condition for listening

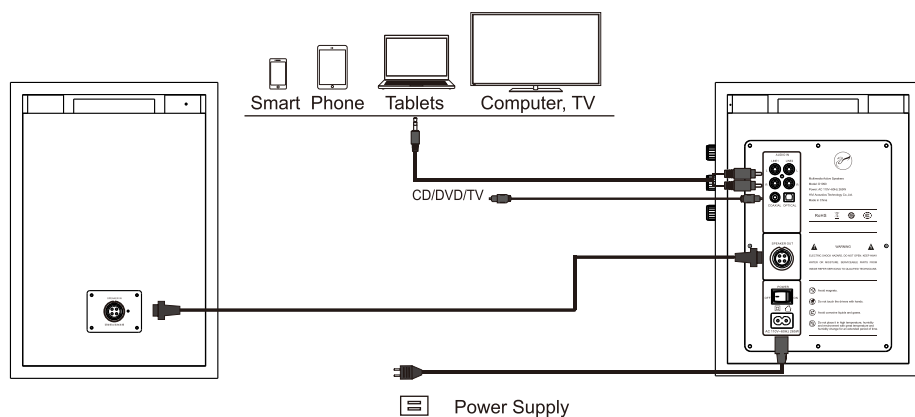
To get an ideal environment for listening, except good quality speakers, an appropriate environment management is indispensable.

Tips for improvement

- Carpet the room to absorb the reflected sound wave caused by polished floor.
- Wallpaper the smooth wall or hang sound absorbing material in the room, cotton and linen are good choice also.
- Use a thick curtain to eliminate the reflected sound wave and resonance caused by glass.

V. Connection

D1090, active speakers, has a built-in amplifier, there are power socket and audio input sockets on the back panel, please follow below connection diagram.



- Connect master speaker and slave speaker with audio cable firmly.
- Connect computers, TV, CD Player, DVD Player, etc.
- Connect power supply.
- Connect smart phone with Bluetooth. Switch to Bluetooth with remote, it's matching when Blue light gleaming, it will be constant blue light after matched.

PS: Device Name: D1090

VI. Use

- Connect a sound source equipment to enjoy music.
- Adjust the volume or the bass intensity according to personal preferences.

VII. Break-in

Break-in, the procedure of further aging, makes speakers have a stable and better performance.

It helps reach your machine optimal level with 48~100 hours on break-in at a moderate volume.

VIII. Maintenance

The device can operate smoothly without any special maintenance under normal circumstances.

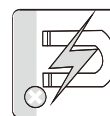
Keep away from corrosive liquids and gases, especially the surface and drivers.

Keep away from the sun or fire place.

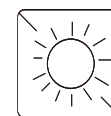
Don't place the device in a high temperature or humidity area.

Don't put a vase or the container with liquid on the product.

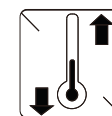
Please wipe the dust with soft cloth, neutral detergent can be used if any stains.



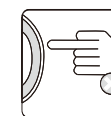
Avoid magnetic disturbances



Do not place the device under the sun



Avoid high temperature or moist environment



Do not touch drivers



Keep away from corrosive liquids and gases